



Experience  
Your  
America

# Yosemite Today

November 2 -  
November 29, 2004

## Yosemite National Park

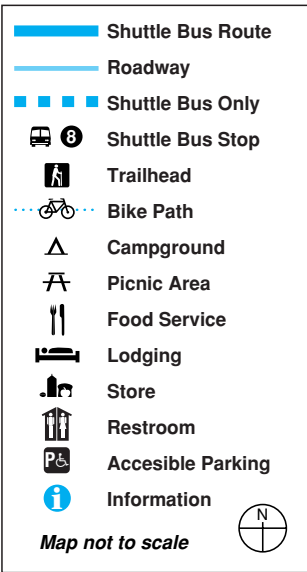
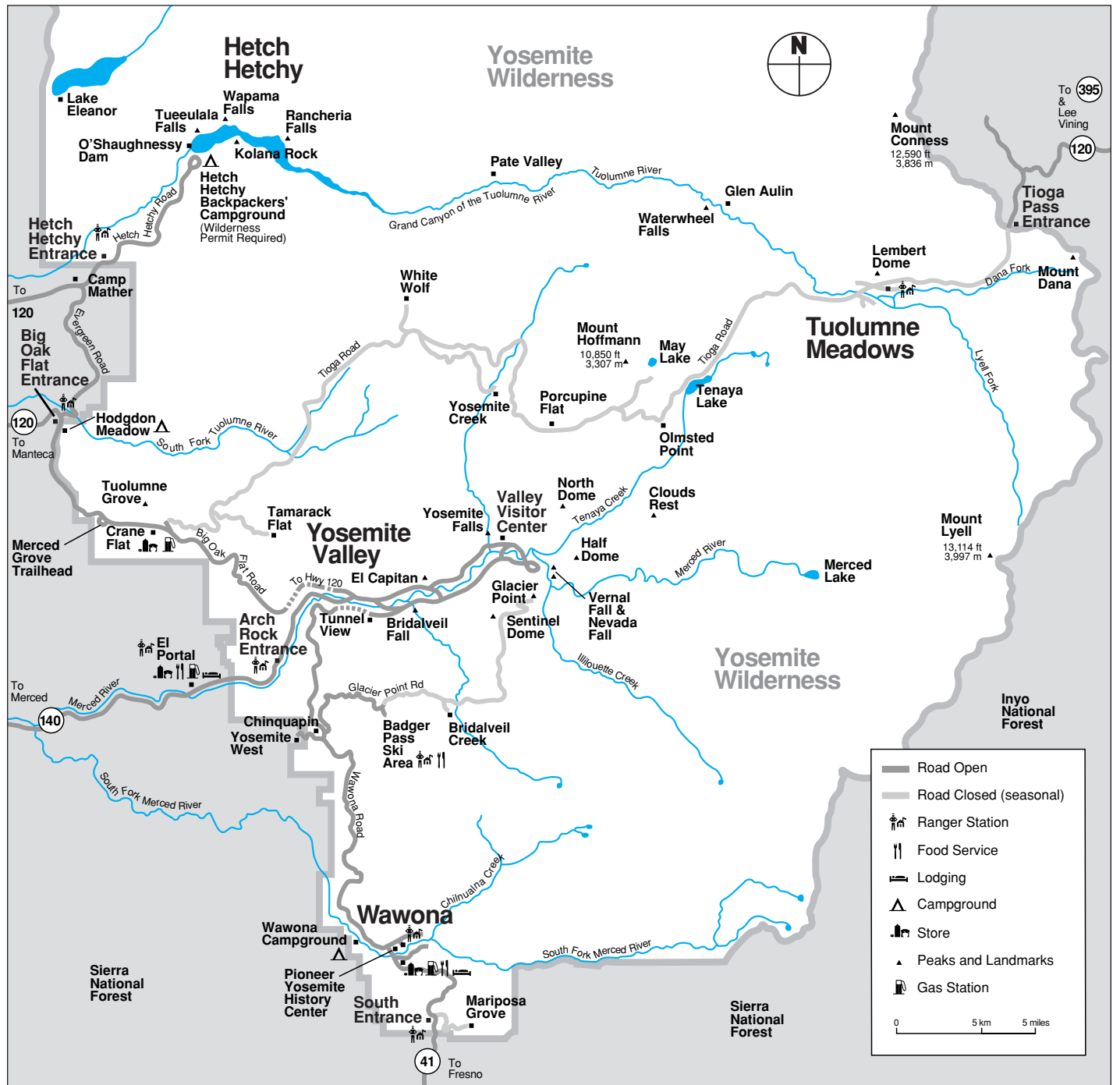
### ROAD INFO

Due to construction, you may experience short delays or temporary detours on some park roads. Call 209/372-0200 for recorded road information.

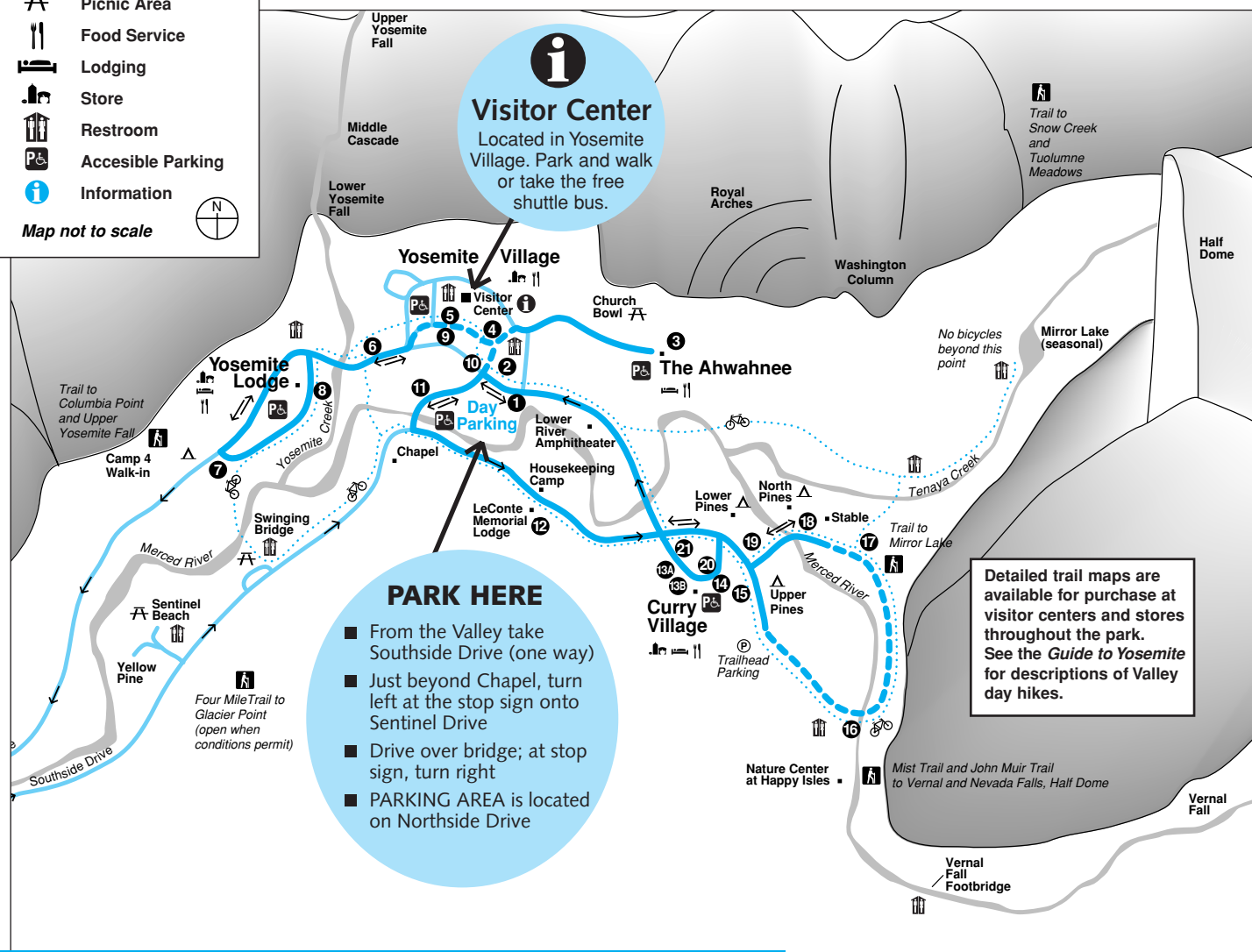
### Easy Access to Lower Yosemite Fall

During construction at Lower Yosemite Fall, you are encouraged to park in the designated day-visitor lot at Yosemite Village and take the free shuttle bus as you explore the Valley. Shuttle buses run every 10 minutes from 7:00 a.m. to 10:00 p.m., and all are wheelchair lift equipped. See route on map below.

For information on visitor services, park history, hiking trails, and more, refer to the *Guide to Yosemite*.



## Yosemite Valley Shuttle Bus Map



### Ride the Free Yosemite Valley Shuttle Bus

Shuttle buses operate daily at 10-minute intervals. All buses follow the same route, serving stops in numerical order. ♿

#### SCHEDULE

7:00 a.m. - 10:00 p.m.

- 1 Yosemite Village/Day Parking
- 2 Yosemite Village
- 3 The Ahwahnee
- 4 Yosemite Village/Degnan's Complex
- 5 Visitor Center
- 6 Lower Yosemite Fall
- 7 Camp 4/Upper Yosemite Fall Trailhead
- 8 Yosemite Lodge
- 9 Visitor Center
- 10 Yosemite Village
- 11 Sentinel Bridge/Yosemite Chapel
- 12 Housekeeping Camp/LeConte Memorial Lodge
- 13A Curry Village Rental Center
- 13B Curry Village Registration Desk
- 14 Curry Village Parking
- 15 Upper Pines Campground
- 16 Happy Isles/John Muir Trailhead\*  
*No service after dark*
- 17 Mirror Lake Junction\*
- 18 Stable
- 19 Lower Pines Campground
- 20 Curry Village Parking
- 21 Curry Village Rental Center

\*Service to these locations ceases after the first major snow

### YOSEMITE AREA REGIONAL TRANSPORTATION SYSTEM



For bus schedules to and from the Yosemite area, call 1-877-98-YARTS or visit YARTS online at [www.yarts.com](http://www.yarts.com)

# Scheduled Events

Programs printed in color are especially for children and their families.

NPS = National Park Service

DNC = Delaware North Corporation at Yosemite

AAG = The Ansel Adams Gallery

S = Programs offered for a fee



Indicates programs and facilities accessible for visitors in wheelchairs, with assistance.

	SUNDAY	MONDAY	TUESDAY	WEDNESDAY
Yosemite Valley	<p>2:00pm <b>Ranger Walk—Yosemite Through the Eyes of a Buffalo Soldier</b> 1½ hrs. Front of Visitor Center (NPS)</p> <p>7:30pm <b>Film—Ansel Adams</b> 1 hr. Yosemite Lodge Amphitheater Check local postings for indoor venue (AAG) &amp;</p>	<p>2:00pm <b>Ranger Walk—Ahwahneechee Stories &amp; Games</b> 1½ hrs. Behind Visitor Center (NPS)</p> <p>7:30pm <b>Evening Program</b> 1 hr. Yosemite Lodge Amphitheater Check local postings for topic and indoor venue (DNC/NPS) &amp;</p>	<p>9:00am <b>Photography Walk</b> 2+ hrs. Limited space, advance sign up required. Meet at The Ansel Adams Gallery, conditions permitting (AAG)</p> <p>2:00pm <b>Ranger Walk—Trees</b> 1½ hrs. The Ahwahnee, shuttle stop #3 (NPS)</p> <p>7:30pm <b>Evening Program</b> 1 hr. Yosemite Lodge Amphitheater Check local postings for topic and indoor venue (DNC) &amp;</p>	<p>9:00am <b>WEEKLY</b> (November 45 min under. Firepl)</p> <p>2:00pm <b>Ranger Walk</b> 1½ hrs</p> <p><b>NPS</b> (November 4 hrs. Visitor)</p> <p>7:30pm <b>FIRES</b> (except 1 hr. T (DNC)</p> <p><b>Evening</b> 1 hr. Y Check venue</p>
Wawona			<p>5:30pm <b>Vintage Music of Yosemite</b> (on most evenings, check at front desk) 4 hrs. Live music with pianist/singer, Tom Bopp. Wawona Hotel Lounge (DNC) &amp;</p>	<p>5:30pm <b>Vintage Music of Yosemite</b> (on most evenings, check at front desk) 4 hrs. Live music with pianist/singer, Tom Bopp. Wawona Hotel Lounge (DNC) &amp;</p>

## Yosemite Valley



Tunnel View After a Storm

Photo by Colleen Brown

### Experience Your America PHOTOGRAPHY EXHIBIT

Come to the Yosemite Museum Gallery and enjoy panoramic photography by Stan Jorstad. This collection includes one photograph from each of fifty-eight different national parks. The exhibit will be open daily, except for November 8 through November 19.

### Visitor Center Temporarily Relocated

While the Yosemite Valley Visitor Center is undergoing renovation this winter, park rangers and the Yosemite Association bookstore will be located just two doors down, between The Ansel Adams Gallery and Valley Post Office in Yosemite Village (shuttle stops #5 and #9).

### Valley Visitor Center

Open 9:00 a.m. to 5:00 p.m. Information, maps, books, and exhibits. Bear canister rental and self-registration for wilderness permits. & TTY

#### FILM

##### Spirit of Yosemite

This inspiring state-of-the-art visitor orientation film provides a stunning overview of Yosemite's splendor. It is shown every 30 minutes from Monday to Saturday 9:30 a.m. to 4:30 p.m., and Sunday noon to 4:30 p.m. in the Visitor Center Theater. Closed captioning available. & CC

### Yosemite Museum

Located in Yosemite Village next to the Valley Visitor Center. &

#### FEATURES

##### Museum Gallery

Open 9:00 a.m. to noon and 1:00 p.m. to 5:00 p.m. *Experience Your America* photography exhibit will be displayed, featuring panoramic images of national parks by photographer Stan Jorstad. Closed November 8 through November 19.

##### Indian Cultural Exhibit

Open 9:00 a.m. to noon and 1:00 p.m. to 5:00 p.m. Displays interpret the cultural history of Yosemite's native Miwok and Paiute people from 1850 to the present. Demonstrations of traditional skills are presented. No food or drink permitted.

##### Yosemite Museum Store

Open 9:30 a.m. to noon and 1:00 p.m. to 5:00 p.m. Offering traditional American Indian arts and crafts and books on related subjects.

### The Indian Village of Ahwahnee

Located behind the Yosemite Museum and open during daylight hours. Occasionally, Indian Cultural Program staff provide demonstrations or programs about Ahwahneechee skills and culture. &

### Yosemite Cemetery

This historic cemetery is located across the street and just west of the Yosemite Museum. People buried here include American Indians and others who played an important role in the development of what is now Yosemite National Park. A *Guide to the Yosemite Cemetery* is available at the Valley Visitor Center.

### The Ansel Adams Gallery

Open 9:00 a.m. to 5:00 p.m. Located in Yosemite Village next to the Valley Visitor Center. The Gallery offers work of Ansel Adams, contemporary photographers, and other fine artists. In addition, a wide selection of handcrafts, books, gifts, photography supplies, and camera/tripod rentals are available. For more information, call the Gallery at 209/372-4413 or visit their web site at [www.anseladams.com](http://www.anseladams.com). &

#### GALLERY EXHIBITS

The Gallery's fall exhibit will highlight *Paintings: Two Views of Yosemite* by Sally Owens and Penny Otwell. Both longtime residents of the Sierras create work inspired by nature. Otwell works in acrylic and oils, using vibrant colors to convey the peace and energy of Yosemite. Owens is a watercolorist who brings out the quiet beauty of nature within her subtle botanicals.

#### SPECIAL BOOK SIGNINGS

##### Friday, November 26

##### Noon to 2:00 p.m.

Join the Gallery for a book signing with local photographer, Michael Frye, whose photographs appear in *The Photographer's Guide to Yosemite* and *Yosemite Meditations*.

##### Saturday, November 27

##### Noon to 2:00 p.m.

Local author Michael Ross will be on hand to sign his works including *Snug as a Bug, Nature Art*, and many other well known children's books.



Joshua Tree National Park

Photograph by Stan Jorstad

## Yosemite Today

Published by the National Park Service, in cooperation with Delaware North Corporation Parks & Resorts at Yosemite

Editor: Victoria Mates  
Design / Production: Skip Gaynard Designs  
Printing: Casey Printing, Inc.

#### We're Interested . . .

We are always looking for ways to improve our visitor publications. You can help by sending your comments via e-mail to [Victoria\\_Mates@nps.gov](mailto:Victoria_Mates@nps.gov) or fax to 209/379-1149.



# November 2 - November 29, 2004

## WEDNESDAY

**WILD ONES**  
November 3 & 10 only)  
Stories and activities for kids 6 and under. Meet at The Ahwahnee Great Lounge Fireplace (DNC) ♿

**Ranger Walk—Yosemite's Legacy**  
1 hr. Front of Visitor Center (NPS)

**Open House**  
November 17 only)  
Learn about park improvement efforts. Meet at Visitor Center East Auditorium (NPS) ♿

**VIDEO STORYTELLING FOR ALL AGES**  
(November 17)  
The Ahwahnee Great Lounge Fireplace ♿

**Evening Program**  
Yosemite Lodge Amphitheater  
Check local postings for topic and indoor venue (DNC/NPS) ♿

**Live Music of Yosemite**  
Most evenings, check at front desk)  
Live music with pianist/singer, Tom Bopp. Wawona Hotel Lounge ♿

## THURSDAY

9:00am **Photography Walk**  
2+ hrs. Limited space, advance sign up required. Meet at The Ansel Adams Gallery, conditions permitting (AAG)

2:00pm **Ranger Walk—Geology**  
1½ hrs. Front of Visitor Center (NPS)

7:30pm **Evening Program**  
1 hr. Yosemite Lodge Amphitheater  
Check local postings for topic and indoor venue (DNC) ♿

5:30pm **Vintage Music of Yosemite**  
(on most evenings, check at front desk)  
4 hrs. Live music with pianist/singer, Tom Bopp. Wawona Hotel Lounge (DNC) ♿

## FRIDAY

2:00pm **Ranger Walk—Wild About Wildlife**  
1½ hrs. Front of Visitor Center (NPS)

4:30pm **FAMILY NATURE STROLL**  
(November 26 only)  
1 hr. The Ahwahnee Back Patio (DNC)

7:30pm **Evening Program**  
1 hr. Yosemite Lodge Amphitheater  
Check local postings for topic and indoor venue (DNC) ♿

5:30pm **Vintage Music of Yosemite**  
(on most evenings, check at front desk)  
4 hrs. Live music with pianist/singer, Tom Bopp. Wawona Hotel Lounge (DNC) ♿

## SATURDAY

9:00am **Photography Walk**  
2+ hrs. Limited space, advance sign up required. On November 27, guest photographer Michael Frye will join the walk. Meet at The Ansel Adams Gallery, conditions permitting (AAG)

**WEE WILD ONES**  
(November 27 only) 45 min.  
Stories and activities for kids 6 and under. Meet at The Ahwahnee Great Lounge Fireplace (DNC) ♿

2:00pm **Ranger Walk—Rivers and Waterfalls**  
1½ hrs. Front of Visitor Center (NPS)

3:00pm **Fine Print Viewing**  
1 hr. Very limited space. Sign up in advance. Meet in The Ansel Adams Gallery (AAG)

4:00pm **CHILDREN'S STORY TIME**  
½ hr. Meet at The Loft, above Degnan's Deli Children 7 and under must be accompanied by adult (AAG)

7:30pm **Evening Program**  
1 hr. Yosemite Lodge Amphitheater  
Check local postings for topic and indoor venue (DNC) ♿

5:30pm **Vintage Music of Yosemite**  
(on most evenings, check at front desk)  
4 hrs. Live music with pianist/singer, Tom Bopp. Wawona Hotel Lounge (DNC) ♿

## Wawona & Mariposa Grove

### Wilderness Permits

Self-registration for wilderness permits will be available on the front porch of Hill's Studio (near Wawona Hotel) for Chilnualna Falls and Alder Creek trails only. Permits for all other trails are available at the Yosemite Valley Visitor Center.

### Pioneer Yosemite History Center

Go back to a time of horse-drawn wagons, a covered bridge, and log cabins. A visit to the Pioneer Yosemite History Center explores Yosemite's history and explains how Yosemite was the inspiration for national parks across America and around the world. The Center is always open, and interpretive signs and brochures are available. ♿

### Evening Programs

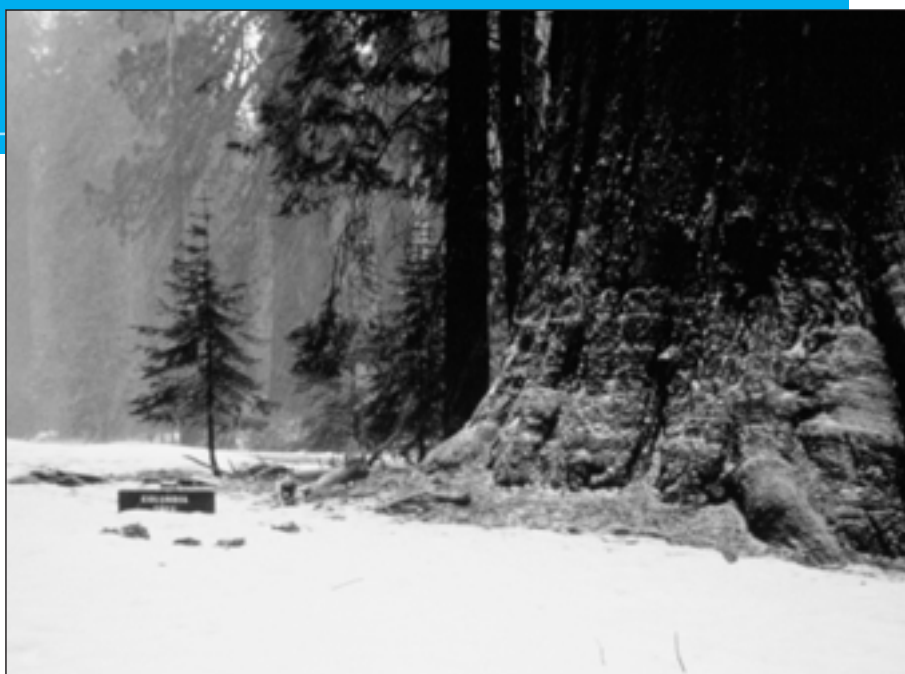
Join pianist/singer Tom Bopp in the Wawona Hotel lobby from 5:30 p.m. to 9:30 p.m., most Tuesday through Saturday evenings, as he performs songs and stories from Yosemite's past. Once or twice a week, he will present an hour-long interpretive program on the vintage songs of Yosemite or the history of Wawona with slide or music accompaniment. Check with Tom at the piano for dates and times. ♿

### To Get to Mariposa Grove

Allow 1¼ hours driving time to the Mariposa Grove from Yosemite Valley. Cars are prohibited beyond the parking area in the Grove, but several giant sequoias can be seen from there. Information about access for the disabled is available at the tram boarding area. The access road to the Grove may close due to snow. Trailers and motor homes are prohibited on the Mariposa Grove Road from the South Entrance to Mariposa Grove.

### Walking through the Grove

The trailhead for walking up through the Grove is located at the far end of the parking area. Interpretive signs between the trailhead and the California Tree provide a self-guiding tour. Written translations are available at the trailhead in Spanish, German, French, and Japanese.



Mariposa Grove of Giant Sequoias

NPS Photo

### DISTANCE & ELEVATION

DESTINATION	DISTANCE FROM TRAILHEAD	ELEVATION GAIN
Grizzly Giant	0.8 mile / 1.3km	400ft / 122m
Grove Museum	2.1 miles / 3.5km	800ft / 292m
Fallen Tunnel Tree	2.5 miles / 4.0km	1,000ft / 305m
Wawona Point	3.0 miles / 4.8km	1,200ft / 438m

## Yosemite's Other Sequoia Groves

### Yosemite's Other Sequoia Groves

#### Tuolumne Grove

The Tuolumne Grove of Giant Sequoias is near Crane Flat at the intersection of the Big Oak Flat Road (Highway 120 West) and the Tioga Road. The former route of the Big Oak Flat Road leads downhill from Crane Flat into the Tuolumne Grove of Big Trees, a cluster of about 25 sequoias. Now closed to cars, this 2-mile (3.2 km) round-trip has an elevation change of 500 feet (150 meters). The downhill walk is relatively easy, though it is moderately strenuous on the uphill return. Once in the Tuolumne Grove, there is an easy half-mile, self-guiding nature trail.

#### Merced Grove

Yosemite's quietest stand of sequoias is the Merced Grove, accessible only on foot. It's a 4-mile roundtrip hike into the grove from the Big Oak Flat Road (Highway 120 West). Located 3.5 miles north of Crane Flat or 4.5 miles south of the Big Oak Flat entrance, the trailhead is marked by a post labeled B-10 and a road sign. Allow 3 hours for the round-trip hike to this group of about 20 sequoias.

### Night Sky Information

**November 4:** Bright Jupiter and Venus can be found shining side by side just before dawn.

**November 9:** The waning crescent moon shines close to Jupiter before and during the dawn hours.

**November 17:** This is the best night to view the Leonid meteor shower. Observers may see dozens of meteors per hour, although the light of the half moon will compromise the view.

**November 26:** The full moon of November is called the Frost Moon.

**November 29:** Late this evening, look below the moon for Saturn.

*Taken from StarDate 32, no. 5 (2004)*



# Park Facilities and Services

## ATM

### Yosemite Village

South of Village Store (Bank of America)  
Inside Village Store

### Yosemite Lodge

Inside main registration area

### Curry Village

Inside gift/grocery store

### Wawona

Inside Wawona Store

### El Portal

On Highway 140 at the Yosemite View Lodge and the El Portal Market.

## Babysitting

Limited babysitting available for registered guests at Yosemite Lodge and The Ahwahnee. Call front desk or concierge for additional information.

## Food & Beverage Service

These hours of operation are approximate. Current hours of operation are posted at each front desk or facility.

### YOSEMITE VILLAGE

#### Degnan's Delicatessen

7:00 a.m. to 5:00 p.m.

### YOSEMITE LODGE

#### Food Court

Breakfast - 6:30 a.m. to 11:00 a.m.  
Lunch - 11:30 a.m. to 2:00 p.m.  
Dinner - 5:00 p.m. to 7:30 p.m.  
Light menu served between meal periods

#### Mountain Room Bar & Lounge

4:30 p.m. to 10:30 p.m. weekdays  
Noon to 10:30 p.m. weekends  
Noon to 10:30 p.m. November 25-27

#### Mountain Room Restaurant

5:00 p.m. to 9:00 p.m. Fri - Sat  
5:00 p.m. to 8:30 p.m. Sun - Thurs  
2:00 p.m. - 9:00 p.m. Thanksgiving Day

### THE AHWAHNEE

#### Dining Room

Breakfast - 7:00 a.m. to 10:30 a.m.  
*Thanksgiving - 7:00 a.m. to 9:30 a.m.*  
Lunch - 11:30 a.m. to 3:00 p.m.  
*No lunch service on Thanksgiving*  
Sunday Brunch - 7:00 a.m. to 3:00 p.m.  
Dinner - 5:30 p.m. to 9:00 p.m.  
*Thanksgiving - noon to 9:00 p.m.*  
Reservations and appropriate attire are respectfully requested. 209/372-1489

#### The Ahwahnee Bar

11:00 a.m. to 11:00 p.m.  
Food Service - 11:00 a.m. to 9:00 p.m.

### CURRY VILLAGE

#### Coffee Corner

7:00 a.m. to 11:00 a.m.

#### Pizza Patio

5:00 p.m. to 9:00 p.m. Mon - Fri  
Noon to 9:00 p.m. Sat - Sun

### WAWONA HOTEL

#### Dining Room

Breakfast - 7:30 a.m. to 10:00 a.m.  
Lunch - 11:30 a.m. to 1:30 p.m.  
Dinner - 5:30 p.m. to 9:00 p.m.  
Reservations taken for 8 or more. 209/375-1425  
*November 24 Thanksgiving dinner served  
Noon to 9:00 p.m.*  
*For reservations, call 559/252-4848*

## Gas Station

### Wawona

9:00 a.m. to 6:00 p.m. Diesel & propane available.  
Pay at the pump 24 hours with credit or debit card.

### Crane Flat

Pay at the pump 24 hours with credit or debit card.

### El Portal

8:00 a.m. to 5:00 p.m. Diesel available.  
Pay at the pump 24 hours with credit or debit card.

## Gifts, Books, & Apparel

### YOSEMITE VILLAGE

#### The Ansel Adams Gallery

9:00 a.m. to 5:00 p.m.

#### Yosemite Bookstore

9:00 a.m. to 5:00 p.m. Inside Visitor Center

#### Yosemite Museum Store

9:30 a.m. to 5:00 p.m. Closed for lunch

#### Village Store

8:00 a.m. to 9:00 p.m.

#### Habitat Yosemite

9:00 a.m. to 5:00 p.m. Fri - Sun

Open week of November 22 - November 28

#### Sport Shop

9:00 a.m. to 5:00 p.m.

### YOSEMITE LODGE

**Gift/Grocery** 8:00 a.m. to 9:00 p.m.

**Nature Shop** 10:00 a.m. to 8:00 p.m.

### THE AHWAHNEE

**Gift Shop** 8:00 a.m. to 10:00 p.m.

*Closes at 9:00 p.m. November 19*

**Sweet Shop** 7:00 a.m. to 10:00 p.m.

### CURRY VILLAGE

**Mountain Shop** 9:00 a.m. to 6:00 p.m.

**Gift/Grocery** 8:00 a.m. to 9:00 p.m.

### WAWONA

**Pioneer Gift Shop/Grocery**

8:00 a.m. to 6:00 p.m.

### MARIPOSA GROVE

**Big Trees Gift Shop** 9:00 a.m. to 4:00 p.m.

## Groceries

### Yosemite Lodge Gift/Grocery

8:00 a.m. to 9:00 p.m.

### Village Store

8:00 a.m. to 9:00 p.m.

### Degnan's Delicatessen

7:00 a.m. to 5:00 p.m.

### Curry Village Gift/Grocery

8:00 a.m. to 9:00 p.m.

### Wawona Grocery Store

8:00 a.m. to 6:00 p.m.

### Crane Flat

9:00 a.m. to 5:00 p.m.

### El Portal Market

*Closed Thanksgiving*  
9:00 a.m. to 7:00 p.m.

## Showers & Laundromat

### SHOWERS

**Curry Village** 24 hours

### LAUNDROMAT

**Housekeeping Camp**

8:00 a.m. to 10:00 p.m.

## Recycling

### Village Store Recycling Center

10:00 a.m. to 5:00 p.m.

## Post Offices

### Main Post Office - Yosemite Village

Monday - Friday 8:30 a.m. to 5:00 p.m.  
Saturday 10:00 a.m. to noon

### Yosemite Lodge Post Office

Monday - Thursday 11:30 a.m. to 2:45 p.m.  
Friday 11:30 a.m. to 4:30 p.m.

### Wawona Post Office

Monday - Friday 9:00 a.m. to 5:00 p.m.  
Saturday 9:00 a.m. to noon

### El Portal Post Office

Monday - Friday 8:30 a.m. to 12:30 p.m.,  
1:30 p.m. to 5:00 p.m.

## Auto Service, Towing, and Repair (AAA)

### Village Garage

8:00 a.m. to noon, 1:00 p.m. to 5:00 p.m.  
Towing 24 hours. Propane available until 4:00 p.m.  
209/372-8320

## Service Organizations

### Al-Anon

7:00 p.m. Wednesday  
*No meeting on November 24*  
DNC General Office Building  
(Executive Conference Room) Yosemite Village

### Alcoholics Anonymous

7:30 p.m. Sunday, Tuesday, and Thursday  
DNC General Office Building  
(Employee Training Center) Yosemite Village

### Narcotics Anonymous

7:30 p.m. Saturday  
DNC General Office Building  
(Employee Training Center) Yosemite Village

### Lions Club

Meets first and third Thursdays of each month at noon, The Ahwahnee.  
Call 209/372-4475 for information.

### Rotary International

Meets Thursdays for lunch at noon in The Ahwahnee Mural Room. Visiting Rotarian families and guests welcome. For meeting reservations or information, call 209/372-1401.

# General Park Information

## Emergency 911

Fire - Police - Medical Emergency:  
Dial 911, 24 hours a day (from hotel room 9-911)

## Information

### Road and Weather

**General Park Information**  
209/372-0200 [www.nps.gov/yose](http://www.nps.gov/yose)  
**Campground Reservations**  
800/436-7275 [reservations.nps.gov](http://reservations.nps.gov)

## Medical

### Yosemite Medical Clinic

Emergency care: 24 hours daily  
Drop-in and urgent care: 8:00 a.m. to 7:00 p.m.  
Appointments  
8:00 a.m. to 5:00 p.m. Monday - Friday  
9:00 a.m. to noon Saturday

Located on Ahwahnee Drive in Yosemite Valley, the clinic provides routine and emergency medical care, 24-hour paramedic/ambulance services, limited pharmacy, lab, x-ray, physical therapy, and Mountain Crisis Services for victims of domestic violence. 209/372-4637

### ⚡ PAD Program

Yosemite's Public Access Defibrillation (PAD) Program is designed to protect park visitors and staff from sudden cardiac arrest. All automated external defibrillator (AED) cabinets have been placed in high-risk locations and are open and accessible to anyone in the event of a medical emergency. For more information about the PAD Program, contact the Yosemite Medical Clinic.

AEDs can be found at the following locations: Valley Visitor Center, Village Store (Yosemite Village), Yosemite Lodge, Curry Village Registration Desk, The Ahwahnee, Crane Flat Store, Wawona Hotel, and Glacier Point Gift Shop (summer) or Badger Pass Lodge (winter).

### Dental Services

Adjacent to Medical Clinic. For hours, call 209/372-4200. If no answer, call 209/372-4637.

## ♿ Services For Disabled

The *Yosemite Accessibility Guide* is available at park entrance stations, visitor centers, and online at [www.nps.gov/yose/trip/access](http://www.nps.gov/yose/trip/access)  
TTYs are available inside The Ahwahnee, Yosemite Lodge, and outside the Curry Village front desk.

## Accommodations

For advanced reservations or information (rooms or activities), call 559/252-4848 ([www.yosemitenps.com](http://www.yosemitenps.com))  
For availability on day of arrival, check at any front desk.

## Bear Canister Rental

Available for \$5 per trip at the Yosemite Valley Visitor Center, Crane Flat Store, Curry Village Mountain Store, Wawona Store, and the Hetch Hetchy Entrance Station. Canisters may be rented or returned at any rental location in the park.

## Wilderness Permits

All wilderness centers are closed for the season. Anyone going overnight into Yosemite's backcountry must have a wilderness permit. You can self-register at one of the following locations: Yosemite Valley Visitor Center, Hill's Studio porch (near Wawona Hotel), or Hetch Hetchy Entrance Station.

Tioga Road is closed to all overnight parking. Bears can remain active throughout the winter. Visitors heading into Yosemite's wilderness areas are highly encouraged to use bear resistant food canisters.

## Recreation

Conditions permitting.

### YOSEMITE MOUNTAINEERING SCHOOL AND GUIDE SERVICE

Yosemite Mountaineering School and Guide Service offers lessons and guided climbing at all levels, overnight backpacking, and guided day

## Religious Services

### YOSEMITE COMMUNITY CHURCH

(Nondenominational Christian)  
Pastor Brent Moore 209/372-4831  
Counseling provided. Call pastor for appointment.

#### Yosemite Valley Chapel (year-round)

#### Worship Services

Sunday 9:15 a.m. (*Children's Church and Nursery*)  
Sunday 6:30 p.m.  
Thursday 7:00 p.m.  
Thanksgiving Service November 25 10:00 a.m.

### ROMAN CATHOLIC

Rev. Raymond J. Duffy 209/372-4729

#### Mass in Yosemite Valley

Visitor Center West Auditorium  
Sunday 10:00 a.m.

### CHURCH OF CHRIST

Ron Skelton 209/379-2307

El Portal Chapel

Worship Service  
Sunday 9:00 a.m.

### CHURCH OF JESUS CHRIST OF

#### LATTER DAY SAINTS

#### Yosemite Valley Sacrament Service

Sunday 1:00pm at Yosemite Chapel

### CROSSWAY CHURCH

(Christian Protestant)

Pastor Steve Hughes 209/379-2428

#### Worship Service

Thursday 7:00 p.m.  
County Library-Girls Club  
(across the street from NPS Administration Building)

### EL PORTAL COMMUNITY CHURCH

Pastor Russ Marsh 209/379-2255

El Portal Chapel

#### Worship Service

First and third Saturday 7:30 p.m.  
Second, fourth, and fifth Sunday 10:30 a.m.

hikes to spectacular areas of Yosemite Valley and the high country.

#### Curry Village

Located in the Mountain Shop  
8:30 a.m. to noon, 1:00 p.m. to 5:00 p.m.  
Classes meet at 8:30 a.m. 209/372-8344

### BICYCLE RENTAL

Daily, weather permitting, with hourly and daily rates. Baby-joggers, wheelchairs, and six-speed bikes with trailers.

#### Yosemite Lodge

10:00 a.m. to 4:00 p.m. 209/372-1208

### ICE SKATING

The Curry Village ice rink is scheduled to open November 19, weather permitting. Located at shuttle stop #21. 209/372-8341.

## Tours

Inquire at tour/transportation desks at the following locations.

### Yosemite Lodge Tour Desk

7:30 a.m. to 7:00 p.m.

### SIGHTSEEING TOURS\*

#### Valley Floor Tour

This 26-mile, 2-hour tour departs several times daily from Yosemite Lodge in Yosemite Valley. Check at tour desk for hours.

#### Glacier Point Tour

A 4-hour round trip from Yosemite Valley to Glacier Point. The Glacier Point Tour also offers a one-way ticket for adventurers to hike back down to Yosemite Valley. Departs at 8:30 a.m., 10:00 a.m., and 1:30 p.m. daily from Yosemite Lodge. Ends for season when Glacier Point Road closes.

#### Grand Tour

An 8-hour combination of Big Trees and Glacier Point Tours. Departs 8:45 a.m. daily from Yosemite Lodge. Ends for season when Glacier Point Road closes.

\*Weather permitting