



Experience
Your
America

Yosemite Today

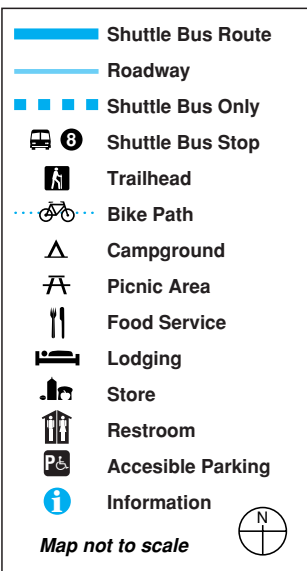
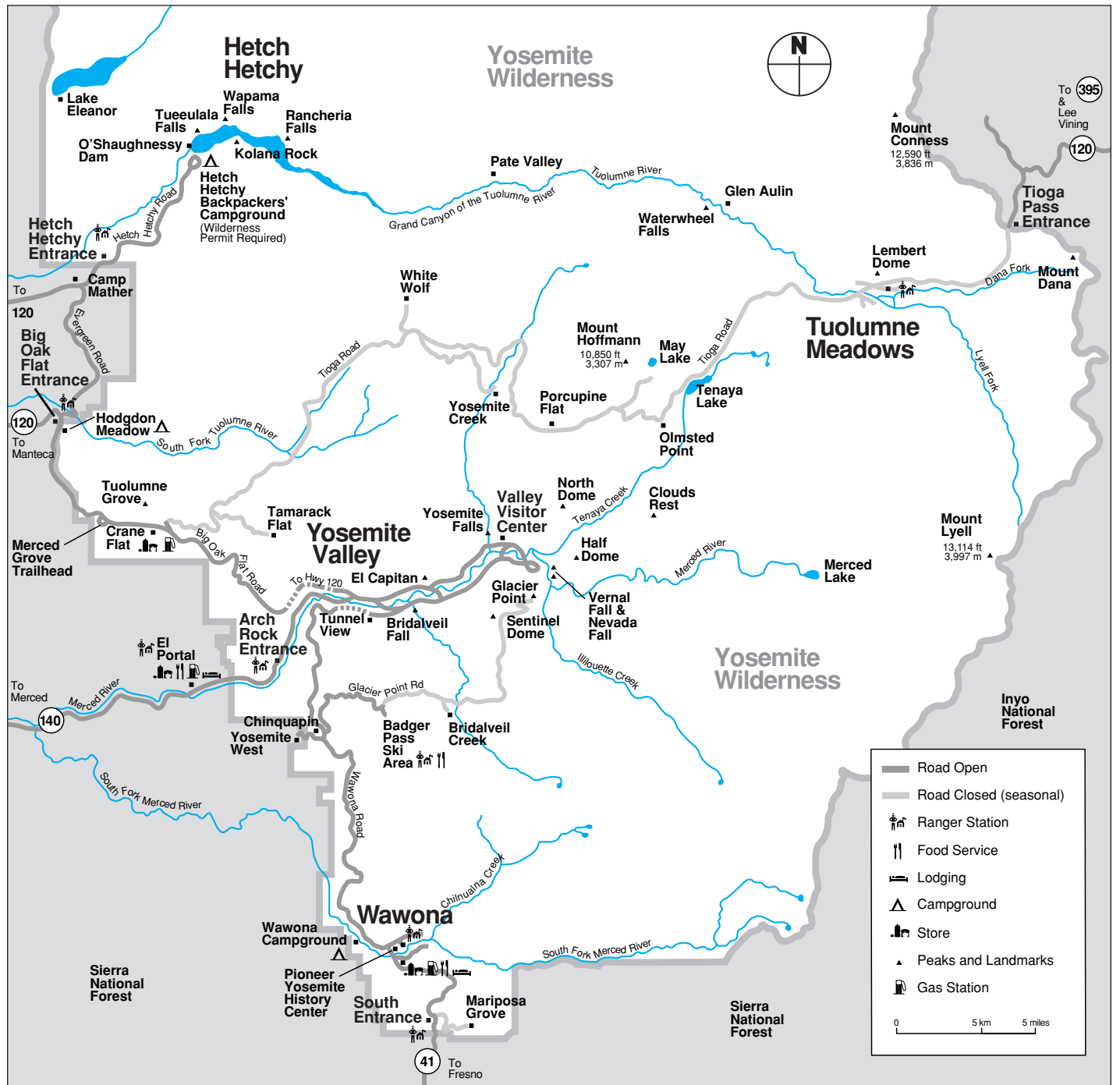
November 30, 2004 -
January 3, 2005

Yosemite National Park

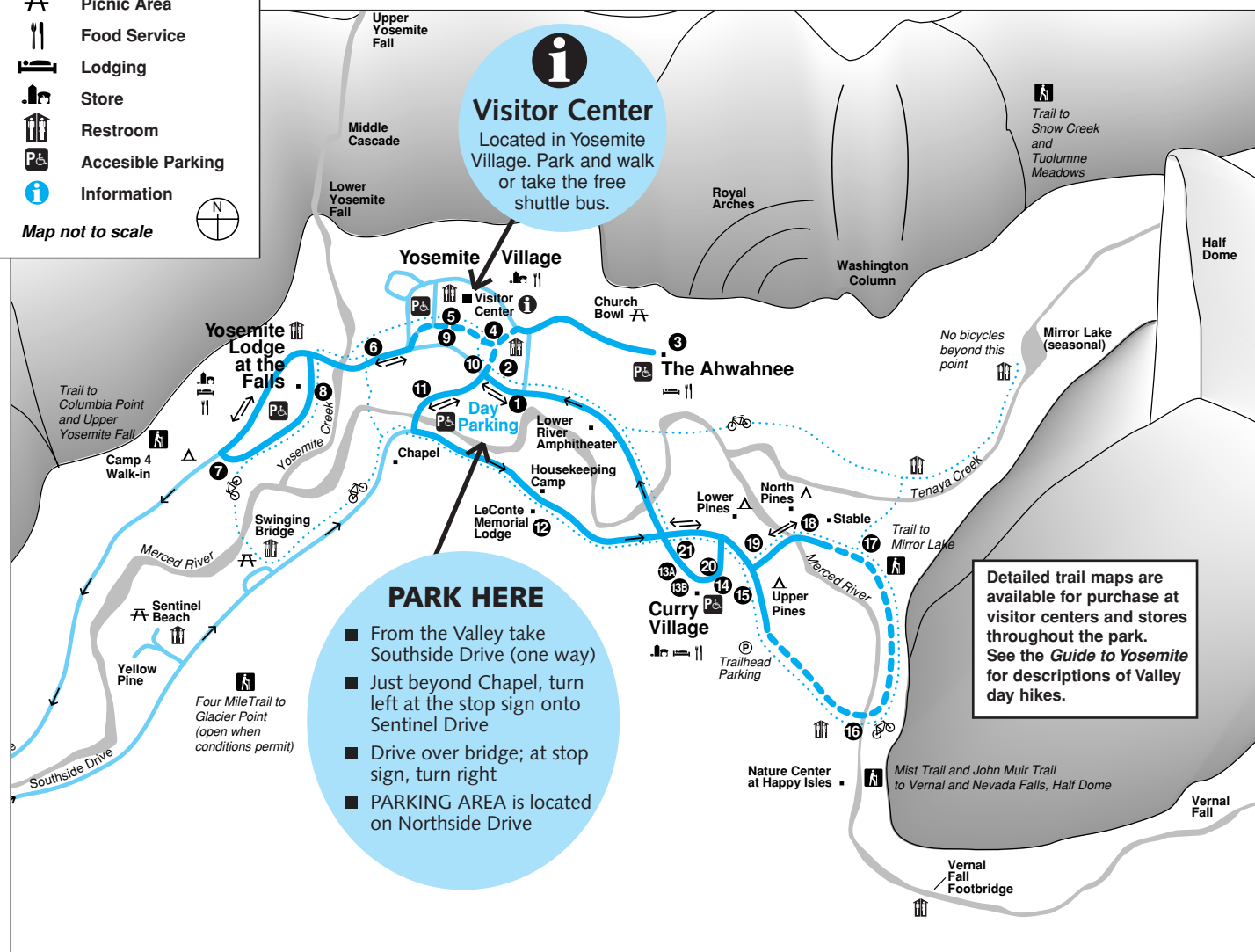
ROAD INFO

Due to construction, you may experience short delays or temporary detours on some park roads. Call 209/372-0200 for recorded road information.

For information on visitor services, park history, hiking trails, and more, refer to the *Guide to Yosemite*.



Yosemite Valley Shuttle Bus Map



Ride the Free Yosemite Valley Shuttle Bus

Shuttle buses operate daily at 30-minute intervals. All buses follow the same route, serving stops in numerical order. ♻️

SCHEDULE

7:00 a.m. - 10:00 p.m.

- 1 Yosemite Village/Day Parking
- 2 Yosemite Village
- 3 The Ahwahnee
- 4 Yosemite Village/Degnan's Complex
- 5 Visitor Center
- 6 Lower Yosemite Fall
- 7 Camp 4/Upper Yosemite Fall Trailhead
- 8 Yosemite Lodge at the Falls
- 9 Visitor Center
- 10 Yosemite Village
- 11 Sentinel Bridge/Yosemite Chapel
- 12 Housekeeping Camp/LeConte Memorial Lodge
- 13A Curry Village Rental Center
- 13B Curry Village Registration Desk
- 14 Curry Village Parking
- 15 Upper Pines Campground
- 16 Closed for season
- 17 Closed for season
- 18 Stable
- 19 Lower Pines Campground
- 20 Curry Village Parking
- 21 Curry Village Rental Center

YOSEMITE AREA REGIONAL TRANSPORTATION SYSTEM



For bus schedules to and from the Yosemite area, call 1-877-98-YARTS or visit YARTS online at www.yarts.com

Scheduled Events

Programs printed in color are especially for children and their families.

NPS = National Park Service
DNC = Delaware North Corporation at Yosemite
AAG = The Ansel Adams Gallery
\$ = Programs offered for a fee



Indicates programs and facilities accessible for visitors in wheelchairs, with assistance.

	SUNDAY	MONDAY	TUESDAY	WEDNESDAY
Yosemite Valley	<p>9:00am WEE WILD ONES (December 12 & 19 only) 45 min. Stories and activities for kids 6 and under The Ahwahnee Great Lounge Fireplace (DNC) &</p> <p>10:00am Ranger Talk—Experience Your America 10 min. talk on this special photo exhibit Museum Gallery (NPS)</p> <p>1:00pm FAMILY WINTER CELEBRATION (January 2 only) 3 hrs. See details below</p> <p>2:00pm Ranger Walk—A Changing Yosemite 1½ hrs. Front of Visitor Center (NPS)</p> <p>6:30pm Full Moon Snowshoe Walk (December 26 only) 2 hrs. No experience required See details below. Advance sign up at any tour desk. Badger Pass Lodge \$ (DNC)</p> <p>7:30pm Film—Ansel Adams 1 hr. Yosemite Lodge at the Falls Check local postings for indoor venue (AAG) &</p>	<p>9:00am WEE WILD ONES (December 27 only) 45 min. Stories and activities for kids 6 and under The Ahwahnee Great Lounge Fireplace (DNC) &</p> <p>11:00am CHILDREN'S STORY TIME (December 20 only) 45 min. The Ahwahnee Great Lounge Fireplace (DNC) &</p> <p>2:00pm Ranger Walk—Ahwahneechee Stories & Games 1½ hrs. Front of Museum (NPS)</p> <p>7:30pm Evening Program 1 hr. Yosemite Lodge at the Falls Check local postings for topic and indoor venue (DNC/NPS) &</p>	<p>9:00am Photography Walk 2+ hrs. Limited space, advance sign up required. Meet at The Ansel Adams Gallery Conditions permitting (AAG)</p> <p>11:00am CHILDREN'S STORY TIME (December 28 only) 45 min. The Ahwahnee Great Lounge Fireplace (DNC) &</p> <p>2:00pm Ranger Walk—Trees 1½ hrs. The Ahwahnee shuttle stop #3 (NPS)</p> <p>7:30pm Evening Program 1 hr. Yosemite Lodge at the Falls Check local postings for topic and indoor venue (DNC) &</p>	<p>9:00am WEE WILD ONES 45 min. Stories and activities for kids 6 and under The Ahwahnee Great Lounge Fireplace (DNC) &</p> <p>2:00pm Ranger Walk—A Changing Yosemite 1½ hrs. Front of Visitor Center (NPS)</p> <p>7:30pm Evening Program 1 hr. Yosemite Lodge at the Falls Check local postings for topic and indoor venue (DNC) &</p>



Glacier Point as seen from Yosemite Valley

Photo by RH Anderson

Yosemite Valley

Visitor Center Temporarily Relocated

While the Yosemite Valley Visitor Center is undergoing renovation this winter, park rangers and the Yosemite Association bookstore will be located just two doors down, between The Ansel Adams Gallery and Valley Post Office in Yosemite Village (shuttle stops #5 and #9).

Valley Visitor Center

Open 9:00 a.m. to 5:00 p.m. Information, maps, books, and exhibits. Bear canister rental and self-registration for wilderness permits. & TTY

FILM

Spirit of Yosemite

This inspiring state-of-the-art visitor orientation film provides a stunning overview of Yosemite's splendor. It is shown every 30 minutes from Monday to Saturday 9:30 a.m. to 4:30 p.m., and Sunday noon to 4:30 p.m. in the Visitor Center Theater. Closed captioning available. & CC

Yosemite Museum

Located in Yosemite Village next to the Valley Visitor Center. &

FEATURES

Museum Gallery

Open 9:00 a.m. to noon and 1:00 p.m. to 5:00 p.m. *Experience Your America* photography exhibit will be displayed, featuring panoramic images of national parks by photographer Stan Jorstad.

Indian Cultural Exhibit

Open 9:00 a.m. to noon and 1:00 p.m. to 5:00 p.m. Displays interpret the cultural history of Yosemite's native Miwok and Paiute people from 1850 to the present. Demonstrations of traditional skills are presented. No food or drink permitted.

Yosemite Museum Store

Open 9:30 a.m. to noon and 1:00 p.m. to 5:00 p.m. Offering traditional American Indian arts and crafts and books on related subjects.

The Indian Village of Ahwahnee

Located behind the Yosemite Museum and open during daylight hours. Occasionally, Indian Cultural Program staff provide demonstrations or programs about Ahwahneechee skills and culture. &

Yosemite Cemetery

This historic cemetery is located across the street and just west of the Yosemite Museum. People buried here include American Indians and others who played an important role in the development of what is now Yosemite National Park. A *Guide to the Yosemite Cemetery* is available at the Valley Visitor Center.

The Ansel Adams Gallery

Closes at 3:00 p.m. Christmas Eve. Closed Christmas Day.

Opens at 10:00 a.m. New Year's Day.

Open 9:00 a.m. to 5:00 p.m. Located in Yosemite Village next to the Valley Visitor Center. The Gallery offers work of Ansel Adams, contemporary photographers, and other fine artists. In addition, a wide selection of handcrafts, books, gifts, photography supplies, and camera/tripod rentals are available. For more information, call the Gallery at 209/372-4413 or visit www.anseladams.com. &

GALLERY EXHIBITS

Through December 18

Paintings: Two Views of Yosemite by Sally Owens and Penny Otwell. Both longtime residents of the Sierras create work inspired by nature. Otwell works in acrylic and oils, using vibrant colors to convey the peace and energy of Yosemite. Owens is a watercolorist who brings out the quiet beauty of nature within her subtle botanicals.

Beginning December 20

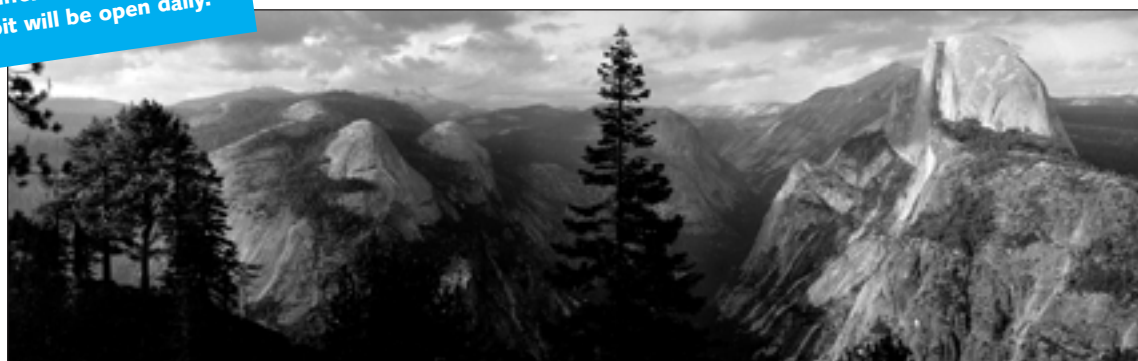
Yosemite in Winter is an exhibition of photographs by Ansel Adams and other contemporary photographers featuring the winter Sierra Nevada landscape. The changing fall and winter conditions create one of the best seasons to capture images on film.

Yosemite Winter Theatre

Actor Lee Stetson portrays John Muir in *The Spirit of John Muir: Stories of Ice and Snow* as he delights audiences with tales of Muir's daring winter adventures. This 1-hour show is held at the Yosemite Lodge at the Falls Cliff Room (see schedule above). Tickets are \$8.00/adults and \$4.00/children 12 and under and may be purchased in advance from the Yosemite Lodge at the Falls tour desk, or if seating is available, at the door. &

Experience Your America PHOTOGRAPHY EXHIBIT

Come to the Yosemite Museum Gallery and enjoy panoramic photography by Stan Jorstad. This collection includes one photograph from each of fifty-eight different national parks. The exhibit will be open daily.



Photograph by Stan Jorstad

A Yosemite Holiday to Remember

DECEMBER 14, 2004 to JANUARY 1, 2005

Caroling, concerts, & holiday cheer will ring throughout Yosemite Valley!

Check local listings for a schedule of special events.

Family Winter Celebration

JANUARY 2
1:00 - 4:00 p.m.
Curry Village Guest Lounge

Join park staff for an afternoon of crafts, walks, and winter fun!

November 30, 2004 - January 3, 2005

WEDNESDAY

WILD ONES

Stories and activities for children and under 12 years old. Meet at The Ahwahnee Great Lounge Fireplace &.

Ranger Walk—Yosemite's Legacy
1 hr. Front of Visitor Center (NPS) &

Open House
December 1 only)
Learn about park improvement efforts at the Ahwahnee Center East Auditorium (NPS) &

Evening Program
1 hr. Yosemite Lodge at the Falls
Check local postings for topic and indoor venue (DNC/NPS) &

Winter Theater Live—The Spirit of John Muir: Stories of Ice and Snow
December 22 & 29 only)
Yosemite Lodge at the Falls Cliff Room
Tickets at Lodge tour desk or at door, if available \$ (DNC) &

THURSDAY

9:00am **Photography Walk**
2+ hrs. Limited space, advance sign up required. Meet at The Ansel Adams Gallery conditions permitting (AAG)

2:00pm **Ranger Walk—Geology**
1½ hrs. Front of Visitor Center (NPS)

7:30pm **Evening Program**
1 hr. Yosemite Lodge at the Falls
Check local postings for topic and indoor venue (DNC) &

Winter Theater Live—The Spirit of John Muir: Stories of Ice and Snow
(December 23 only)
1 hr. Yosemite Lodge at the Falls Cliff Room
Tickets at Lodge tour desk or at door, if available \$ (DNC) &

FRIDAY

2:00pm **Ranger Walk—Wild About Wildlife**
1½ hrs. Front of Visitor Center (NPS)

7:30pm **Evening Program**
1 hr. Yosemite Lodge at the Falls
Check local postings for topic and indoor venue (DNC) &

SATURDAY

9:00am **Photography Walk**
2+ hrs. Limited space, advance sign up required. Meet at The Ansel Adams Gallery conditions permitting (AAG)

10:00am **Ranger Talk—Experience Your America**
10 min. talk on this special photo exhibit
Museum Gallery (NPS)

2:00pm **Ranger Walk—Rivers and Waterfalls**
1½ hrs. Sentinel Bridge. Shuttle stop #11 (NPS)

3:00pm **Fine Print Viewing**
1 hr. Very limited space. Sign up in advance
Meet in The Ansel Adams Gallery (AAG)

Winter Theater Live—The Spirit of John Muir: Stories of Ice and Snow
(December 25 only)
1 hr. Yosemite Lodge at the Falls Cliff Room
Tickets at Lodge tour desk or at door, if available \$ (DNC) &

4:00pm **CHILDREN'S STORY TIME**
½ hr. Meet at The Loft, above Degnan's Deli
Children 7 and under must be accompanied by adult (AAG)

7:30pm **Evening Program**
1 hr. Yosemite Lodge at the Falls
Check local postings for topic and indoor venue (DNC) &

Wawona

Pioneer Yosemite History Center

Go back to a time of horse-drawn wagons, a covered bridge, and log cabins. A visit to the Pioneer Yosemite History Center explores Yosemite's history and explains how Yosemite was the inspiration for national parks across America and around the world. The center is always open, and interpretive signs and brochures are available. &

Holidays at Wawona Hotel

December 10 – 12; December 17 – January 3

Tree lighting, Santa, caroling, and ringing in the new year! Musician and historian Tom Bopp will be playing the piano and presenting programs on select evenings. Check at front desk for a schedule of events.

Badger Pass

Opens for season December 17, weather permitting

Badger Pass, California's oldest operating ski area, is the center of Yosemite ski and snowboarding activity during the winter. It is located at 7,200 feet in elevation and is a 1-hour drive from Yosemite Valley on the Glacier Point Road. There are 10 runs, 3 ski lifts, downhill and cross-country ski schools, ski rentals, and a day lodge. Cross-country skiers will find groomed and ungroomed trails that originate at Badger Pass; tracks are groomed on the Glacier Point Road all the way to Glacier Point. Wilderness permits available at the Badger Pass A-frame. Call 209/372-1000 for ski conditions.

Badger Pass Bus

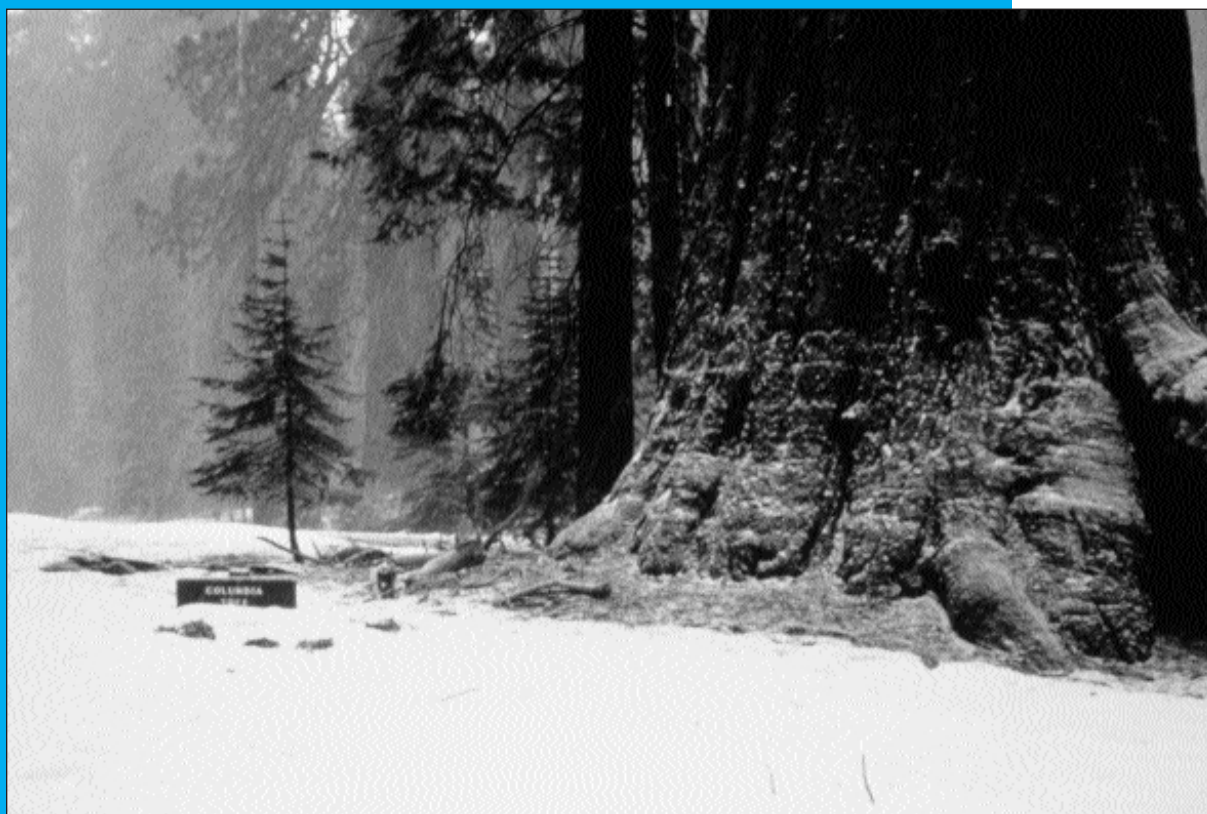
Ride the free bus to Badger Pass Ski Area (bus begins running when ski area opens for the season). Road and weather conditions permitting, the bus leaves daily from Curry Village at 8:00 a.m., and 10:30 a.m., Yosemite Village at 8:10 a.m. and 10:40 a.m., The Ahwahnee at 8:15 a.m. and 10:45 a.m., and Yosemite Lodge at the Falls at 8:30 a.m. and 11:00 a.m. Return buses leave Badger Pass at 2:00 pm and 4:00 p.m. Several buses operate on busy days. Allow at least one hour for a one-way trip. Additional information is available at hotel front desks.

Full Moon Snowshoe Walk

December 26, 6:30 p.m.

Join an interpreter for a 2-3 mile walk in a moonlit winter wonderland. Watch the moon rise over majestic firs at Badger Pass. No experience necessary; however, this program is not recommended for children under 10 yrs. Visit a tour desk, Badger Pass Lodge, or call 209/372-1240 for required advance reservations. Cost is \$14.75 with snowshoe rental, \$5 if you have our own.

NOTE: Program canceled if the Badger Pass Road closes, or if weather conditions are too severe.



Sequoia Groves in Winter

Mariposa Grove of
Giant Sequoias
NPS Photo

Mariposa Grove

The Mariposa Grove of Giant Sequoias, located at the southern-most end of Yosemite, is the largest stand of giant sequoias in the park (about 500 trees). Allow 1¼ hours driving time from Yosemite Valley. Cars are prohibited beyond the parking area; however, many giant sequoias can be seen from there. From the parking area, all trails in the Mariposa Grove of Giant Sequoias are uphill. The trailhead is located at the far end of the parking area. Interpretive signs between the trailhead and the Californiana Tree provide a self-guiding tour. Written translations are available at the trailhead (German, French, Spanish, Japanese).

In winter, the access road to the Grove is closed due to snow. Once the access road is closed, add one to two hours for the 2-mile walk from the south entrance of the park to the Grove.

Merced Grove

Yosemite's quietest stand of sequoias is the Merced Grove, accessible only on foot. It's a 4-mile roundtrip hike or ski into the grove from the Big Oak Flat Road (Highway 120 West). Located 3.5 miles north of Crane Flat or 4.5 miles south of the Big Oak Flat entrance, the trailhead is marked by a post labeled B-10 and a road sign. Allow 3 hours for the roundtrip hike or ski to this group of about 20 sequoias.

Tuolumne Grove

The Tuolumne Grove of Giant Sequoias is near Crane Flat at the intersection of the Big Oak Flat Road and the Tioga Road. The former route of the Big Oak Flat Road leads downhill from Crane Flat into the Tuolumne Grove of Big Trees, a cluster of about 25 sequoias. Now closed to cars, this 2-mile roundtrip walk or ski has an elevation change of 500 feet (150 meters). It is relatively easy, though it is moderately strenuous on the uphill return. Once in the Tuolumne Grove there is an easy half-mile, self-guiding nature trail.

Yosemite Today

Published by the National Park Service, in cooperation with Delaware North Corporation Parks & Resorts at Yosemite

Editor Victoria Mates
Design / Production Skip Gaynard Designs
Printing Casey Printing, Inc.

We're Interested . . .

We are always looking for ways to improve our visitor publications. You can help by sending your comments via e-mail to Victoria_Mates@nps.gov or fax to 209/379-1149.

Park Facilities and Services



ATM

Yosemite Village
South of Village Store (Bank of America)
Inside Village Store

Yosemite Lodge at the Falls
Inside main registration area

Curry Village
Inside gift/grocery store

Wawona
Inside Wawona Store

El Portal
On Highway 140 at the Yosemite View Lodge and the El Portal Market.

Babysitting

Limited babysitting available for registered guests at Yosemite Lodge at the Falls and The Ahwahnee. Call front desk or concierge for additional information.

Food & Beverage Service

These hours of operation are approximate. Current hours of operation are posted at each front desk or facility.

BADGER PASS

All facilities open December 17 weather permitting

Skiers Grill

8:30 a.m. to 4:00 p.m.

Snowflake Room

Friday – Sunday and holidays
10:00 a.m. to 4:30 p.m.

YOSEMITE VILLAGE

Degnan's Delicatessen
7:00 a.m. to 5:00 p.m.

YOSEMITE LODGE AT THE FALLS

Food Court

Breakfast – 6:30 a.m. to 11:00 a.m.
Lunch – 11:30 a.m. to 2:00 p.m.
Dinner – 4:30 p.m. to 7:30 p.m.
December 25 - January 2 - 4:30 p.m. to 8:00 p.m.
Light menu served between meal periods

Mountain Room Bar & Lounge

4:30 p.m. to 10:30 p.m. weekdays
Noon to 10:30 p.m. weekends
December 25 - January 2 - Noon to 10:30 p.m.
New Years Eve - Noon to 1:00 a.m.

Mountain Room Restaurant

5:00 p.m. to 8:30 p.m. Fri - Sat
5:00 p.m. to 9:00 p.m. Sun - Thurs
Christmas Day - 4:00 p.m. to 9:00 p.m.
New Years Eve - 5:00 p.m. to 10:00 p.m.

THE AHWAHNEE

Dining Room

Breakfast – 7:00 a.m. to 10:30 a.m.
Lunch – 11:30 a.m. to 3:00 p.m.
Sunday Brunch – 7:00 a.m. to 3:00 p.m.
Grand Brunch served New Years Day
Dinner – 5:30 p.m. to 9:00 p.m.
December 15-16, 18-19, 21-22, 24-25 - Shortened lunch hours and no regular dinner service
Reservations and appropriate attire are respectfully requested. 209/372-1489

The Ahwahnee Bar

11:00 a.m. to 11:00 p.m.
Food Service – 11:00 a.m. to 9:00 p.m.

CURRY VILLAGE

Coffee Corner

Open December 18 - January 2
7:00 a.m. to 11:00 a.m.

Pizza Patio

5:00 p.m. to 9:00 p.m. *December 17 - 19*
Noon to 9:00 p.m. *December 20 - January 1*

WAWONA HOTEL

December 10 - 12, 17 - January 3

Dining Room

Breakfast – 7:30 a.m. to 10:00 a.m.
Lunch – 11:30 a.m. to 1:30 p.m.
Dinner – 5:30 p.m. to 9:00 p.m.
Reservations taken for 8 or more. 209/375-1425
December 25, Christmas dinner - Noon to 9:00 p.m.
New Years Eve dinner / dance begins 7:00 p.m.

Gas Station

Wawona
9:00 a.m. to 6:00 p.m. Diesel & propane available. Pay at the pump 24 hours with credit or debit card.

Crane Flat
Pay at the pump 24 hours with credit or debit card.

El Portal
8:00 a.m. to 5:00 p.m. Diesel available. Pay at the pump 24 hours with credit or debit card.

Gifts, Books, & Apparel

YOSEMITE VILLAGE

The Ansel Adams Gallery
9:00 a.m. to 5:00 p.m.

Yosemite Bookstore
9:00 a.m. to 5:00 p.m. Inside Visitor Center

Yosemite Museum Store
9:30 a.m. to 5:00 p.m. Closed for lunch

Village Store 8:00 a.m. to 8:00 p.m.
Christmas Day - 10:00 a.m. to 6:00 p.m.

Habitat Yosemite
9:00 a.m. to 5:00 p.m. Fri - Sun
Christmas Day - 10:00 a.m. to 3:00 p.m.

Sport Shop 9:00 a.m. to 5:00 p.m.

YOSEMITE LODGE AT THE FALLS

Gift/Grocery 8:00 a.m. to 8:00 p.m.

Nature Shop 11:00 a.m. to 6:00 p.m.

THE AHWAHNEE

Gift Shop 8:00 a.m. to 10:00 p.m.

Sweet Shop 7:00 a.m. to 10:00 p.m.

CURRY VILLAGE

Mountain Shop 9:00 a.m. to 6:00 p.m.

Gift/Grocery 8:00 a.m. to 9:00 p.m.

WAWONA

Pioneer Gift Shop/Grocery

8:00 a.m. to 6:00 p.m.
Christmas Day - 10:00 a.m. to 5:00 p.m.

Groceries

Yosemite Lodge at the Falls Gift/Grocery
8:00 a.m. to 8:00 p.m.

Village Store 8:00 a.m. to 8:00 p.m.
Christmas Day - 10:00 a.m. to 6:00 p.m.

Degnan's Delicatessen 7:00 a.m. to 5:00 p.m.

Curry Village Gift/Grocery

8:00 a.m. to 9:00 p.m.

Wawona Grocery Store

8:00 a.m. to 6:00 p.m.
Christmas Day - 10:00 a.m. to 5:00 p.m.

Crane Flat 9:00 a.m. to 5:00 p.m.

El Portal Market 9:00 a.m. to 7:00 p.m.

Closes at 6:00 p.m. Christmas Eve
Closed Christmas and New Years Day

Showers & Laundromat

SHOWERS

Curry Village 24 hours

LAUNDROMAT

Housekeeping Camp 8:00 a.m. to 10:00 p.m.

Recycling

Village Store Recycling Center

10:00 a.m. to 5:00 p.m.

Post Offices

Main Post Office - Yosemite Village

Monday – Friday 8:30 a.m. to 5:00 p.m.
Saturday 10:00 a.m. to noon

Yosemite Lodge at the Falls Post Office

Monday – Thursday 11:30 a.m. to 2:45 p.m.
Friday 11:30 a.m. to 4:30 p.m.

Wawona Post Office

Monday – Friday 9:00 a.m. to 5:00 p.m.
Saturday 9:00 a.m. to noon

El Portal Post Office

Monday – Friday 8:30 a.m. to 12:30 p.m.,
1:30 p.m. to 5:00 p.m.

Auto Service, Towing, and Repair (AAA)

Village Garage

8:00 a.m. to noon, 1:00 p.m. to 5:00 p.m.
Towing 24 hours. No gas. Propane available until 4:00 p.m.
209/372-8320

Service Organizations

Al-Anon

7:00 p.m. Wednesday
No meeting on December 8 and 15
DNC General Office Building
(Executive Conference Room) Yosemite Village

Alcoholics Anonymous

7:30 p.m. Sunday, Tuesday, and Thursday
DNC General Office Building
(Employee Training Center) Yosemite Village

Narcotics Anonymous

7:30 p.m. Saturday
DNC General Office Building
(Employee Training Center) Yosemite Village

Lions Club

Meets first and third Thursdays of each month at noon, The Ahwahnee.
Call 209/372-4475 for information.

Rotary International

Meets Thursdays for lunch at noon in The Ahwahnee Mural Room. Visiting Rotarian families and guests welcome. For meeting reservations or information, call 209/372-1401.

General Park Information

Emergency 911

Fire – Police – Medical Emergency:
Dial 911, 24 hours a day (from hotel room 9-911)

Information

Road and Weather
General Park Information
209/372-0200 www.nps.gov/yose
Campground Reservations
800/436-7275 reservations.nps.gov

Medical

Yosemite Medical Clinic

Emergency care: 24 hours daily
Drop-in and urgent care: 8:00 a.m. to 7:00 p.m.

Appointments

8:00 a.m. to 5:00 p.m. Monday – Friday
9:00 a.m. to noon Saturday

Located on Ahwahnee Drive in Yosemite Valley, the clinic provides routine and emergency medical care, 24-hour paramedic/ambulance services, limited pharmacy, lab, x-ray, physical therapy, and Mountain Crisis Services for victims of domestic violence. 209/372-4637

⚡ PAD Program

Yosemite's Public Access Defibrillation (PAD) Program is designed to protect park visitors and staff from sudden cardiac arrest. All automated external defibrillator (AED) cabinets have been placed in high-risk locations and are open and accessible to anyone in the event of a medical emergency. For more information about the PAD Program, contact the Yosemite Medical Clinic.

AEDs can be found at the following locations: Valley Visitor Center, Village Store (Yosemite Village), Yosemite Lodge at the Falls, Curry Village Registration Desk, The Ahwahnee, Crane Flat Store, Wawona Hotel, and Glacier Point Gift Shop (summer) or Badger Pass Lodge (winter).

Dental Services

Adjacent to Medical Clinic. For hours, call 209/372-4200. If no answer, call 209/372-4637.

♿ Services For Disabled

The *Yosemite Accessibility Guide* is available at park entrance stations, visitor centers, and online at www.nps.gov/yose/trip/access
TTYs are available inside The Ahwahnee, Yosemite Lodge at the Falls, and outside the Curry Village front desk.

Accommodations

For advanced reservations or information (rooms or activities), call 559/252-4848 (www.yosemitepark.com)
For availability on day of arrival, check at any front desk.

Bear Canister Rental

Available for \$5 per trip at the Yosemite Valley Visitor Center, Crane Flat Store, Curry Village Mountain Store, Wawona Store, and the Hetch Hetchy Entrance Station. Canisters may be rented or returned at any rental location in the park.

Wilderness Permits

All wilderness centers are closed for the season. Anyone going overnight into Yosemite's back-country must have a wilderness permit. You can self-register at one of the following locations: Yosemite Valley Visitor Center, Hill's Studio porch (near Wawona Hotel), or Hetch Hetchy Entrance Station.

Tioga Road is closed to all overnight parking. Bears can remain active throughout the winter. Visitors heading into Yosemite's wilderness areas are highly encouraged to use bear resistant food canisters.

Religious Services

YOSEMITE COMMUNITY CHURCH

(Nondenominational Christian)
Pastor Brent Moore 209/372-4831
Counseling provided. Call pastor for appointment.

Yosemite Valley Chapel (year-round)

Worship Services
Sunday 9:15 a.m. (*Children's Church and Nursery*)
Sunday 6:30 p.m.
Thursday 7:00 p.m.
December 24 4:00 p.m.
New Years Eve 10:30 p.m.

ROMAN CATHOLIC

Rev. Raymond J. Duffy 209/372-4729

Valley Visitor Center West Auditorium

Sunday 10:00 a.m.
Christmas Day 10:00 a.m.

Yosemite Valley Chapel

December 8 (Wednesday) 5:30 p.m.

CHURCH OF CHRIST

Ron Skelton 209/379-2307

El Portal Chapel

Worship Service
Sunday 9:00 a.m.

CHURCH OF JESUS CHRIST OF

LATTER DAY SAINTS

Yosemite Valley Sacrament Service

Sunday 1:00 p.m. at Yosemite Chapel

CROSSWAY CHURCH

(Christian Protestant)

Pastor Steve Hughes 209/379-2428

Worship Service

Thursday 7:00 p.m.
County Library-Girls Club
(across the street from NPS Administration Building)

EL PORTAL COMMUNITY CHURCH

Pastor Russ Marsh 209/379-2255

El Portal Chapel

Worship Service

First and third Saturday 7:30 p.m.
Second, fourth, and fifth Sunday 10:30 a.m.

Recreation

Conditions permitting.

YOSEMITE MOUNTAINEERING SCHOOL AND GUIDE SERVICE

Yosemite Mountaineering School and Guide Service offers lessons and guided climbing at all levels, overnight backpacking, and guided day hikes to spectacular areas of Yosemite Valley and the high country.

Badger Pass

Located in the Cross Country Ski Area
8:30 a.m. - 4:30 p.m. 209/372-8344

BADGER PASS SKI AREA

Opens for season December 17, conditions permitting.
Downhill ski area, rental shop, cross-country center, ski school, snow tubing, snow lift operation: 9:00 a.m. to 4:00 p.m. Call 209/372-1000 for conditions and information.

ICE SKATING RINK

Located at Curry Village, shuttle stops #13 and #21
209/372-8341

Monday – Friday
3:30 p.m. – 6:00 p.m. 7:00 p.m. – 9:30 p.m.
December 18 - January 2
Noon - 2:30 (in addition to above hours)

Saturday, Sunday, and holidays
8:30 a.m. – 11:00 a.m. Noon – 2:30 p.m.
3:30 p.m. – 6:00 p.m. 7:00 p.m. – 9:30 p.m.

Tours

Inquire at tour/transportation desks at the following locations.

Yosemite Lodge at the Falls Tour Desk

7:30 a.m. to 7:30 p.m. Friday – Saturday
7:30 a.m. to 6:00 p.m. Sunday – Thursday

SIGHTSEEING TOURS

Valley Floor Tour

This 26-mile, 2-hour tour departs several times daily from Yosemite Lodge at the Falls in Yosemite Valley. Check at tour desk for hours.