



Experience Your America

Yosemite Today

May 3 - May 30, 2005

Yosemite National Park

ROAD INFO

Due to construction, you may experience short delays or temporary detours on some park roads. Call 209/372-0200 for recorded road information.

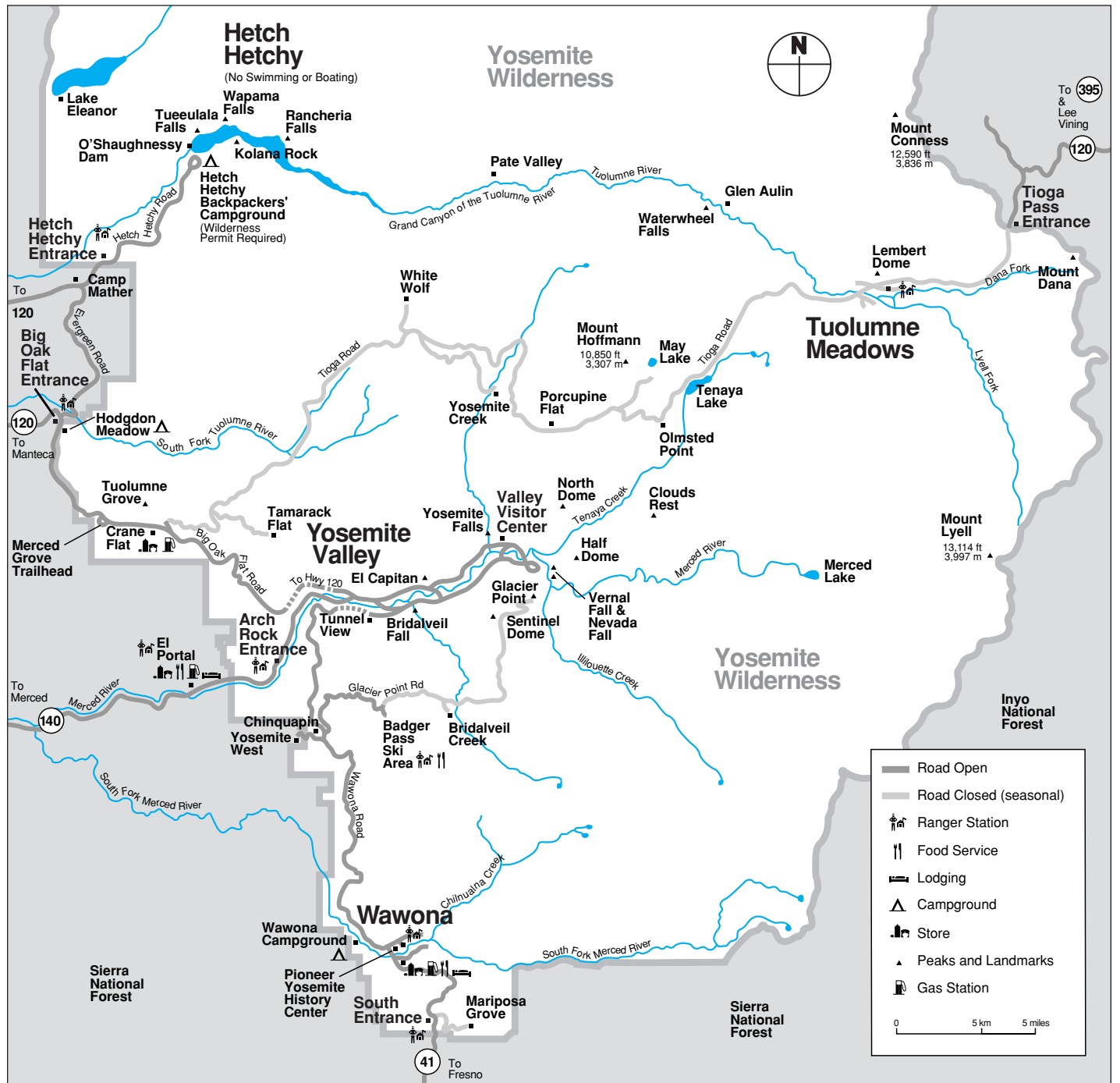
SPIRIT OF YOSEMITE



Don't miss this award-winning, state-of-the-art film! Shown every 30 minutes at the Valley Visitor Center, free of charge.

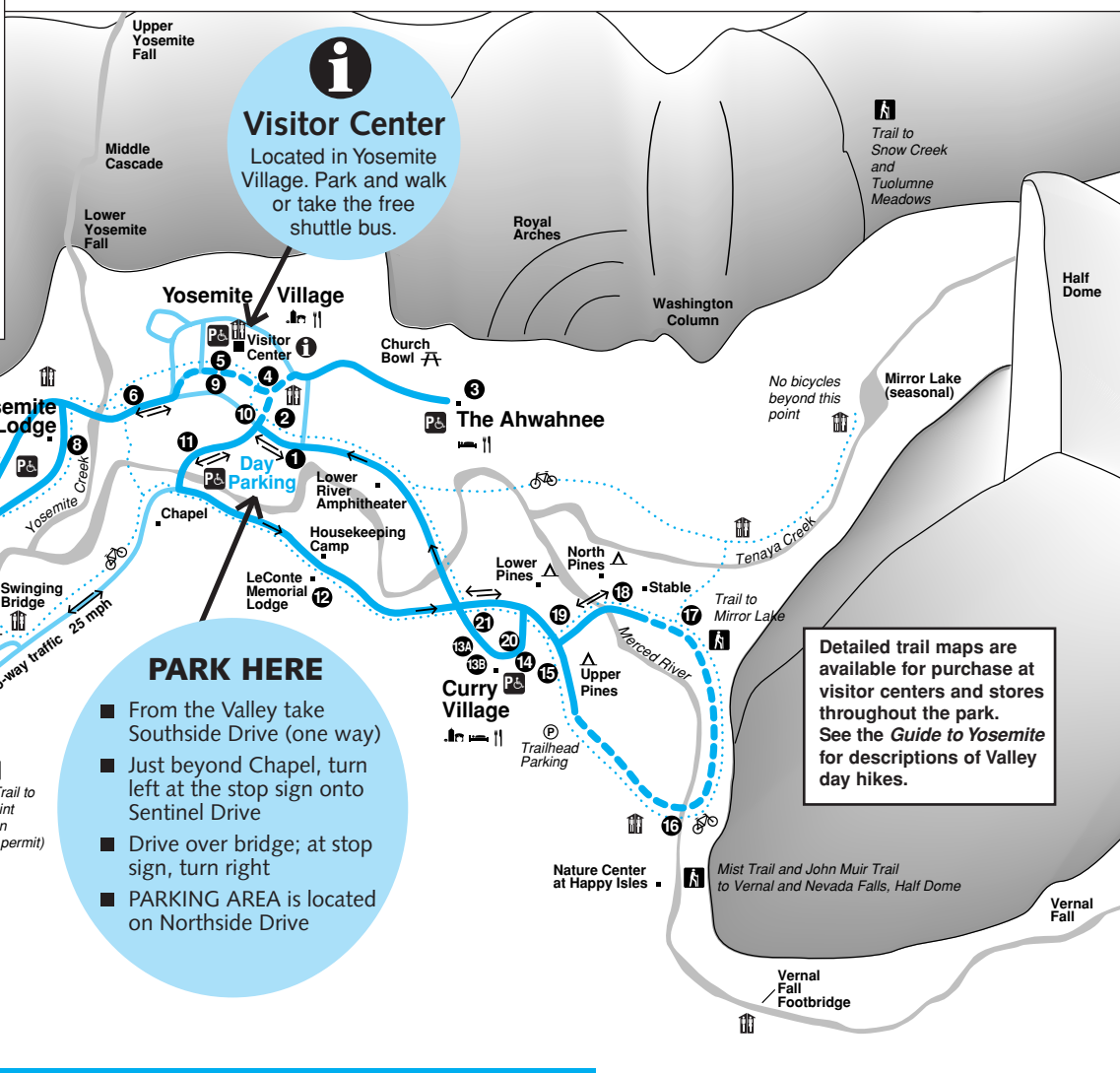
See map below for directions to Day Parking. Take shuttle to stop #5.

Pick up your free Yosemite Map and Guide at the Visitor Center.



Yosemite Valley Shuttle Bus Map

- Shuttle Bus Route
 - Roadway
 - Shuttle Bus Only
 - Shuttle Bus Stop
 - Trailhead
 - Bike Path
 - Campground
 - Picnic Area
 - Food Service
 - Lodging
 - Store
 - Restroom
 - Accessible Parking
 - Information
- Map not to scale



PARK HERE

- From the Valley take Southside Drive (one way)
- Just beyond Chapel, turn left at the stop sign onto Sentinel Drive
- Drive over bridge; at stop sign, turn right
- PARKING AREA is located on Northside Drive



Ride the Free Yosemite Valley Shuttle Bus

Shuttle buses operate daily at 30-minute intervals. All buses follow the same route, serving stops in numerical order.

SCHEDULE

7:00 a.m. - 10:00 p.m.

- Yosemite Village / Day Parking
- Yosemite Village
- The Ahwahnee
- Yosemite Village / Degnan's Complex
- Visitor Center
- Lower Yosemite Fall
- Camp 4/Upper Yosemite Fall Trailhead
- Yosemite Lodge
- Visitor Center
- Yosemite Village
- Sentinel Bridge / Yosemite Chapel
- Housekeeping Camp / LeConte Memorial Lodge
- Curry Village Rental Center
- Curry Village Registration Desk
- Curry Village Parking
- Upper Pines Campground
- Happy Isles / John Muir Trailhead
- Mirror Lake Junction
- Stable
- Lower Pines Campground
- Curry Village Parking
- Curry Village Rental Center

YOSEMITE AREA REGIONAL TRANSPORTATION SYSTEM



For bus schedules to and from the Yosemite area, call 1-877-98-YARTS or visit YARTS online at www.yarts.com

Scheduled Events

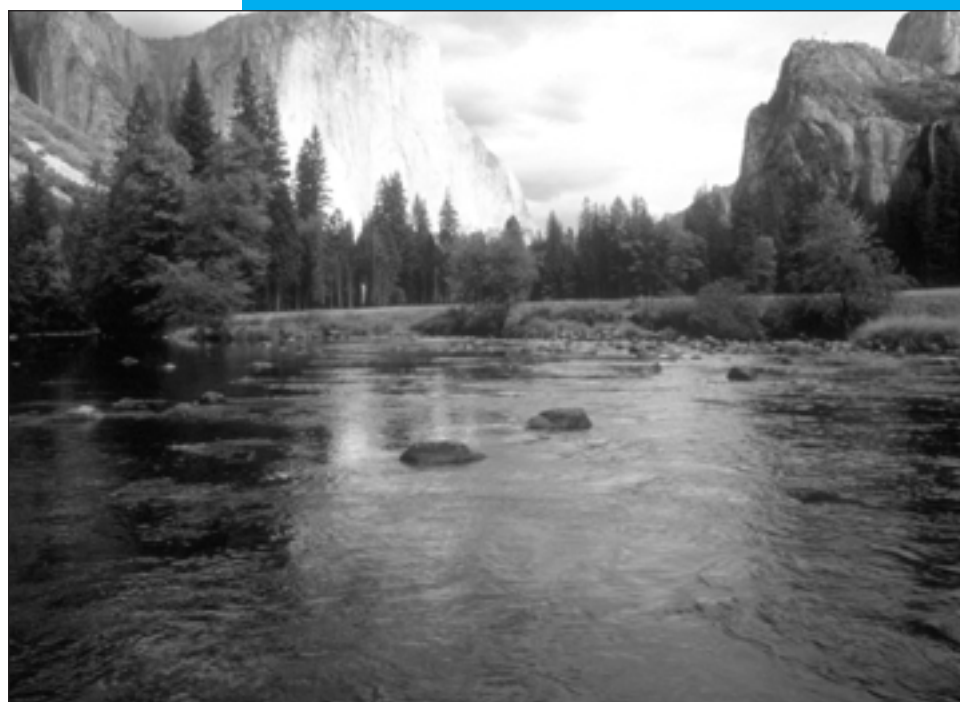
Programs printed in color are especially for children and their families.

NPS = National Park Service
DNC = Delaware North Corporation at Yosemite
AAG = The Ansel Adams Gallery
SC = Sierra Club
\$ = Programs offered for a fee/donation



Indicates programs and facilities accessible for visitors in wheelchairs, with assistance.

	SUNDAY	MONDAY	TUESDAY	WEDNESDAY
Yosemite Valley	<p>2:00pm Ranger Walk—Trees 1½ hrs. Ahwahnee shuttle stop #3 (NPS)</p> <p>6:30pm WEE WILD ONES (begins May 29) 45 min. Stories & activities for kids 6 & under. Curry Village Amphitheater (DNC)</p> <p>7:00pm Open House: Meet LeConte Memorial Lodge (May 1 and May 29) 2½ hrs. Shuttle Bus Stop #12 (SC)</p> <p>8:00pm Film—Ansel Adams 1 hr. Yosemite Lodge Amphitheater Check venue listings for any time changes &</p> <p>Yosemite Theater—LIVE (May 8 & 29 only) Sgt. Elizy Boman in <i>Yosemite Through the Eyes of a Buffalo Soldier, 1904</i> 1½ hrs. Visitor Center Theater Tickets at any Tour Desk or door \$ (DNC) &</p> <p>Evening Program May 8: Muir & Roosevelt in Yosemite: 1903 May 15: Behold! How Genius Sees A Tree May 22: Galen Clark: Guardian of Yosemite 1-1½ hrs. Shuttle Bus Stop #12 (SC)</p>	<p>8:30am Morning Photo Walk, 2 hrs. Sign up/meet at The Ahwahnee Front Desk (DNC)</p> <p>2:00pm Ranger Walk—Yosemite's Legacy 1½ hrs. Front of Visitor Center (NPS)</p> <p>8:00pm Evening Program 1 hr. Yosemite Lodge Amphitheater, check local postings for topic (DNC) &</p> <p>Yosemite Theater—LIVE (begins May 9) <i>Conversation With a Tramp</i> 1½ hrs. Visitor Center Theater Tickets at any Tour Desk or at door \$ (DNC) &</p>	<p>9:00am Photography Walk 2+ hrs. Limited space, advance sign-up required. Meet at The Ansel Adams Gallery, conditions permitting</p> <p>12:00pm Yosemite Forum—Soil Survey of Yosemite National Park (May 10 only) 1 hr. Visitor Center Theater (NPS) &</p> <p>2:00pm Ranger Walk—Bears 1½ hrs. Curry Village Amphitheater (NPS)</p> <p>8:00pm Evening Program 1 hr. Yosemite Lodge Amphitheater Check local postings for topic (DNC/NPS) &</p> <p>Yosemite Theater—LIVE (begins May 10) <i>Sarah Hawkins Contemplates a Fourth Marriage, Stories of a Pioneer Woman</i> 1½ hrs. Visitor Center Theater Tickets at any Tour Desk or at door \$ (DNC) &</p>	<p>2:00pm Ranger Walk—Trees 1½ hrs. Ahwahnee shuttle stop #3 (NPS)</p> <p>NPS Open House (May 25) 4 hrs. Learn about park history, efforts to protect the park, and more.</p> <p>5:30pm Twilight Sings 1 hr. The Ahwahnee Amphitheater (DNC)</p> <p>6:30pm WEE WILD ONES 45 min. Stories & activities for kids 6 & under. Yosemite Valley Amphitheater (DNC)</p> <p>8:00pm Evening Program 1 hr. Yosemite Lodge Amphitheater Check local postings for topic (DNC/NPS) &</p> <p>Yosemite Theater—LIVE (begins May 10) <i>Sarah Hawkins Contemplates a Fourth Marriage, Stories of a Pioneer Woman</i> 1½ hrs. Visitor Center Theater Tickets at any Tour Desk or at door \$ (DNC) &</p>



Yosemite Valley View

Photo by M. Floyd

Yosemite Valley

Visitor Center and Bookstore

Open 9:00 a.m. to 6:00 p.m. Stop at the visitor center for information, maps, books and exhibits. & TTY

FILM

Spirit of Yosemite

This inspiring state-of-the-art visitor orientation film provides a stunning overview of Yosemite's splendor. It is shown every 30 minutes from Monday to Saturday 9:30 a.m. to 5:30 p.m., and Sunday noon to 5:30 p.m. in the Visitor Center Theater. Closed captioning available. & CC

Yosemite Museum

Located in Yosemite Village next to the Valley Visitor Center. &

FEATURES

Museum Gallery

Through May 8 Friday - Monday

Yosemite Renaissance Art Exhibit

For nearly two decades, Yosemite Renaissance (a nonprofit organization supporting arts in Yosemite) has encouraged contemporary artistic interpretations of the landscape, environment, wildlife, and people of Yosemite or the Sierra Nevada. All fine art media, including photography, are eligible for its annual competition. This year's prizewinning artwork will be on view at the Yosemite Museum Gallery. Call (209) 966-4808 for more information.

Indian Cultural Exhibit

Open 9:00 a.m. to 5:00 p.m. (closed for lunch). Displays interpret the cultural history of Yosemite's native Miwok and Paiute people from 1850 to the present. Demonstrations of traditional skills are presented. No food or drink permitted.

The Indian Village of Ahwahnee

Located behind the Yosemite Museum and open during daylight hours. Occasionally, Indian Cultural Program staff provide demonstrations or programs about Ahwahneechee skills and culture. &

Yosemite Cemetery

This historic cemetery is located across the street and just west of the Yosemite Museum. People buried here include American Indians and others who played an important role in the development of what is now Yosemite National Park. A *Guide to the Yosemite Cemetery* is available at the Valley Visitor Center.

The Ansel Adams Gallery

Open 9:00 a.m. to 6:00 p.m. Located in Yosemite Village next to the Valley Visitor Center. The Gallery offers work of Ansel Adams, contemporary photog-

raphers, and other fine artists. In addition, a wide selection of handcrafts, books, gifts, photography supplies, and camera/tripod rentals are available. For more information, call the Gallery at 209/372-4413 or visit www.anseladams.com. &

GALLERY EXHIBIT

May 3

Art Auction to benefit Yosemite Valley School trip to Scotland, with light refreshments. **Reception: May 3, 2005 5:00 p.m. - 8:00 p.m.**
Silent auction bidding ends at 7:15 p.m.

May 4 - June 4

Resplendent Light by Christopher Burkett. These images are an expression of Burkett's reverence and awareness of extraordinary moments when the earth is transformed by grace and light. Burkett is a recognized master printer and his work is found in many museum and private collections.
Artist Reception: May 4th, 5:00 p.m. - 7:00 p.m.

LeConte Memorial Lodge

Open Wednesday through Sunday, 10:00 a.m. to 4:00 p.m. Located at shuttle stop #12. The LeConte Memorial Lodge, Yosemite's first public visitor center, is operated by the Sierra Club and features a children's corner, library, and a variety of environmental education and evening programs. For more information, call 209/372-4542.

Nature Center at Happy Isles

Opens May 9

Open 10:00 a.m. to noon, 1:00 p.m. to 4:00 p.m. This nature center includes natural history exhibits, interactive displays, and a bookstore geared to nature-exploring for families. Nearby are short trails focusing on the area's four different environments; forest, river, talus, and fen.

You can also see substantial evidence of the 1996 rockfall from the Glacier Point cliff far above the Nature Center. An outdoor exhibit details the geologic story of rockfalls in Yosemite. The Center is a short walk from shuttle bus stop #16. &

Yosemite Theater Live

Come help Yosemite Theater celebrate its 22nd season! Shows are presented live onstage in the Visitor Center Theater. Hear the adventuresome tales and antics of John Muir, share the journey by wagon across the plains to California with feisty pioneer Sarah Hawkins, or hear tales of early park history from Park Ranger Shelton Johnson as Cavalry Officer Elizy Boman. Tickets are \$8.00/ adult, \$4.00/ children 12 and under and are sold at the door (if available), or in advance from any tour desk. See above for dates and times. &

Free Art Classes

Free, informal outdoor classes in various art mediums are available for adults through the Yosemite Art Center, located at the east end of Yosemite Village next to the Village Store. Classes are Monday through Saturday 10:00 a.m. to 2:00 p.m.



May 2 - 7
Bob Chapla / Watercolor
 May 9 - 14
Fealing Lin / Watercolor
 May 16 - 21
Robert Dvorak / Watercolor
 May 23 - 28
Don Fay / Watercolor
 May 30 - June 4
Roger Folk / Watercolor

Yosemite Today

Published by the National Park Service, in cooperation with Delaware North Corporation Parks & Resorts at Yosemite

Editor Kevin Poe
Design / Production Skip Gaynard Designs
Printing Casey Printing, Inc.

We're Interested . . .

We are always looking for ways to improve our visitor publications. You can help by sending your comments via e-mail to Kevin_Poe@nps.gov or fax to 209/379-1149.

WEDNESDAY

Talk—Geology
 Visitor Center of Museum (NPS)

Open House
 Information about park improvements
 Visitor Center Auditorium (NPS) &

Stroll
 Ahwahnee Patio (DNC)

Wild Ones
 Stories & activities for kids 6 & under
 Yosemite Lodge Amphitheater

Program
 Yosemite Lodge Amphitheater
 Check local postings for topic (DNC) &

Theater—LIVE
 (May 11)
Other Mortals
 Visitor Center Theater
 Tickets at any Tour Desk or at door

THURSDAY

9:00am **Photography Walk**,
 2+ hrs. Limited space, advance sign-up
 required. Meet at The Ansel Adams Gallery
 conditions permitting

2:00pm **Ranger Walk—Ahwahneechee
 Stories & Games**
 1½ hrs. Front of Visitor Center (NPS)

Watercolor Workshop
 (May 5 only)
 1 hr. Shuttle bus stop #12 (SC)

8:00pm **Evening Program**
 1 hr. Yosemite Lodge Amphitheater
 Check local postings for topic (DNC) &

Yosemite Theater—LIVE
 (begins May 12)
*Sarah Hawkins Contemplates a Fourth
 Marriage, Stories of a Pioneer Woman*
 1½ hrs. Visitor Center Theater
 Tickets at any Tour Desk or at door
 \$ (DNC) &

Dragonflies of Yosemite
 (May 19 only)
 1 hr. Shuttle Bus Stop #12 (SC)

9:00pm **STARRY SKIES OVER YOSEMITE
 VALLEY**
 (May 2 only)
 1-1½ hr. Tickets/info at any lodge tour
 desk \$ (DNC)

FRIDAY

2:00pm **Ranger Walk—Bears**
 1½ hrs. Curry Village Amphitheater (NPS)

Watercolor Workshop
 (May 6 only) 1 hr. Shuttle bus stop #12 (SC)

5:30pm **Twilight Stroll**
 (except May 20 and 27)
 1 hr. The Ahwahnee Patio (DNC)

7:00pm **OLD FASHION CAMPFIRE &
 SING-A-LONG**
 (May 3 only) 1½ hrs. Near Curry Village
 Tickets/info at any lodge tour desk \$ (DNC)

**Open House: Meet LeConte
 Memorial Lodge**
 (May 13 only)
 2½ hrs. Shuttle bus stop #12 (SC)

8:00pm **Evening Program**
 1 hr. Yosemite Lodge Amphitheater
 Check local postings for topic (DNC) &

Evening Program
 (begins May 27)
 1 hr. Curry Village Amphitheater

Yosemite Theater—LIVE
 (begins May 13) *Spirit of John Muir*
 1½ hrs. Visitor Center Theater
 Tickets at any Tour Desk or at door \$ (DNC) &

Evening Program
 May 6: **Portrait of an Artist:
 Painting Yosemite**
 May 20: **American Indian Storytelling
 & Flute**
 May 27: **Joseph LeConte Visits Yosemite**
 1-1½ hr. Shuttle bus stop #12 (SC)

SATURDAY

9:00am **Photography Walk**
 2+ hrs. Limited space, advance sign-up
 required. Meet at The Ansel Adams Gallery,
 conditions permitting

2:00pm **Ranger Walk—Rivers and Waterfalls**
 1½ hrs. Sentinel Bridge shuttle stop #11 (NPS)

Watercolor Workshop
 (May 7 only) 1 hr. Shuttle bus stop #12 (SC)

**The Struggle of Hetch Hetchy:
 Puppet Show**
 (May 14 only) ½ hr. Shuttle bus stop #12 (SC)

3:00pm **Fine Print Viewing**
 1 hr. Very limited space. Sign up in advance
 Meet in The Ansel Adams Gallery

4:00pm **CHILDREN'S STORYTIME**
 ½ hr. Nature story reading on the Gallery
 front porch for children 7 and under. Children
 must be accompanied by an adult (AAG)

6:30pm **WEE WILD ONES**
 (except May 28) 45 min. Stories & activities
 for kids 6 & under. Yosemite Lodge Amphitheater

8:00pm **Evening Program**
 1 hr. Yosemite Lodge Amphitheater
 Check local postings for topic (DNC) &

Evening Program
 (begins May 28)
 1 hr. Curry Village Amphitheater check local
 postings for topic (DNC/NPS)

Evening Program
 May 7: **3-D Slides of National Parks &
 Mt. Diablo**
 May 14: **Scenes From The Big Oak Flat
 Road & Life in Yosemite**
 May 21: **Along the John Muir Trail**
 May 28: **Sequoia & Yosemite**
 1-1½ hr. Shuttle bus stop #12 (SC)

Wawona & Mariposa Grove

Wawona Information Station at Hill's Studio
 Opens May 7

Open 8:30 a.m. to 12:30 p.m., 1:00 p.m. to 4:30 p.m. Information about park activities, wilderness permits, trail information, books, bear canister rentals, and maps. Located on the grounds of the Wawona Hotel, Hill's Studio was the gallery and art studio of famous 19th century landscape painter, Thomas Hill. Walk from the hotel or park at the Wawona Store parking area and follow the path up the hill. For more information call 209/375-9531 &

Pioneer Yosemite History Center

Historic horse drawn wagon exhibit, covered bridge and historic cabins. A visit to the Pioneer Yosemite History Center will explain how Yosemite was the inspiration for national parks across America and around the world. The center is always open and interpretive signs and brochures are available. &

Free Mariposa Grove & Wawona Shuttle Bus

The shuttle bus stops at the Wawona Store, South Entrance, and Mariposa Grove. Shuttles operate daily beginning at 9:00 a.m. Last shuttle leaves the Grove at 6:00 p.m. Visitors may park at the Wawona Store to board the shuttle bus. Trailers and motor homes are prohibited on the Mariposa Grove Road from South Entrance to the Mariposa Grove. Due to narrow roads and very limited parking, visitors are strongly encouraged to use this free bus service to help alleviate congestion and lengthy parking delays.

To Get to Mariposa Grove

Allow 1¼ hours driving time to the Mariposa Grove from Yosemite Valley. Cars are prohibited beyond the parking area in the Grove, but several giant sequoias can be seen from there. Information about access for the disabled is available at the tram boarding area. The access road to the Grove may close intermittently due to limited parking. Trailers and motor homes are prohibited on the Mariposa Grove Road.

Mariposa Grove Museum

Opens May 21, conditions permitting. Giant Sequoia displays and store offering books, maps and information. Open daily 9:30 a.m. to 12:30 p.m. and 1:00 p.m. to 4:30 p.m. Located in the upper portion of the Mariposa Grove.

Walking through the Grove

The trailhead for walking up through the Grove is located at the far end of the parking area. Interpretive signs between the trailhead and the California Tree provide a self-guiding tour. Written translations are available at the trailhead (Spanish, German, French, Japanese).

Mariposa Grove Tram Tour

Trams run every day in the Mariposa Grove of Giant Sequoias for a 1-hour tour through the lower and upper groves. The first tram is at 9:00 a.m. and the last tram is at 5:00 p.m., running every 30 minutes from the boarding area. Conditions permitting.

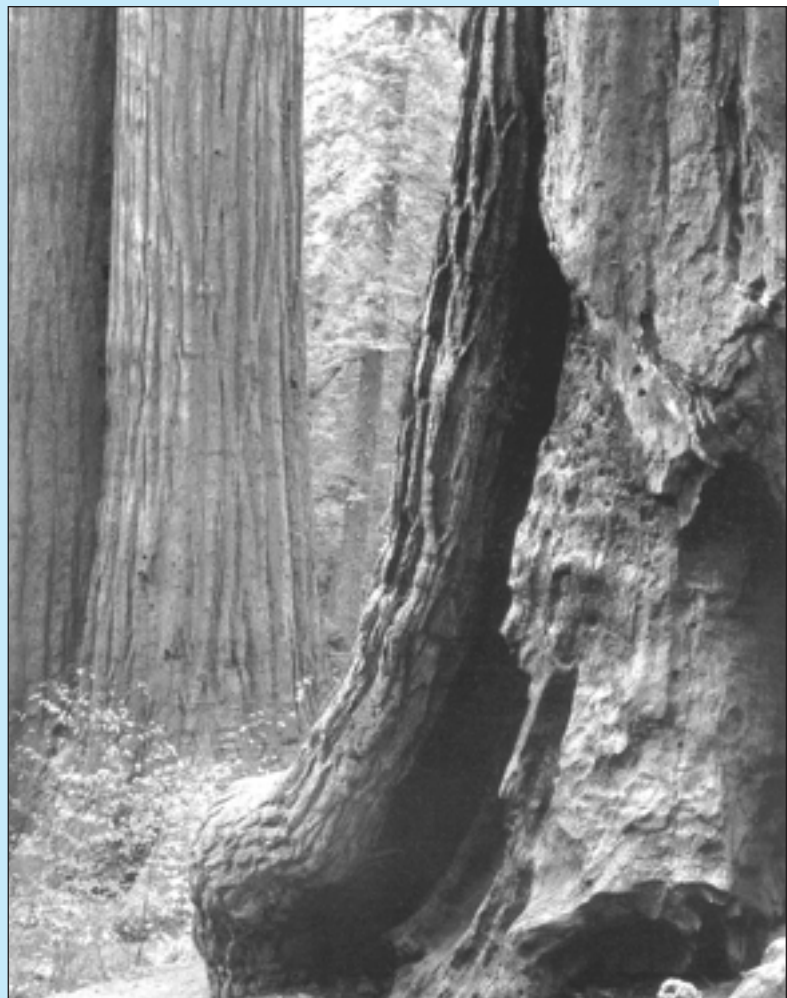
Big Oak Flat & Sequoia Groves

Merced Grove

Yosemite's quietest stand of sequoias is the Merced Grove, accessible only on foot. It's a 2-mile hike into the grove from the Big Oak Flat Road (Highway 120 West). Located 3.5 miles north of Crane Flat or 4.5 miles south of the Big Oak Flat Entrance Station, the trailhead is marked by a post labeled B-10 and a road sign. Allow about 3 hours for the 4-mile round-trip hike to this small group of sequoias (about 20 trees).

Tuolumne Grove

The Tuolumne Grove of Giant Sequoias is near Crane Flat at the intersection of the Big Oak Flat Road and the Tioga Road. The historic route of the old Big Oak Flat Road leads downhill from Crane Flat into the Tuolumne Grove, a cluster of about 25 sequoias. Now closed to cars, this 2-mile round-trip walk is relatively easy, depending on conditions; however, it is moderately strenuous on the uphill return.



Mariposa Grove of Giant Sequoias

Photo by Larry Ulrich

Yosemite Outdoor Adventures

These programs are offered for a fee

To the Top of Yosemite Falls	MAY 21	All Day
Yosemite Hidden History	MAY 22	8:00 a.m. - noon
Hetch Hetchy: Yosemite's Other Valley	MAY 28	8:00 a.m. - noon

For details, call the Yosemite Association at 209/379-2321 or visit www.yosemite.org, or check at the Valley Visitor Center

Park Facilities and Services

ATM

Yosemite Village

South of Village Store (Bank of America)
Inside Village Store

Yosemite Lodge at the Falls

Inside main registration area

Curry Village

Inside gift/grocery store

Wawona

Inside Wawona Store

El Portal

On Highway 140 at the Yosemite View Lodge and the El Portal Market.

Babysitting

Limited babysitting available for registered guests at Yosemite Lodge at the Falls and The Ahwahnee. Call front desk or concierge for additional information.

Food & Beverage Service

These hours of operation are approximate. Current hours of operation are posted at each front desk or facility.

YOSEMITE VILLAGE

Degnan's Delicatessen

7:00 a.m. to 5:00 p.m.

Degnan's Cafe 7:00 a.m. to 5:00 p.m.

Degnan's Loft

5:00 p.m. to 9:00 p.m. Friday
Noon to 9:00 p.m. Saturday & Sunday

Village Grill 11:00 a.m. to 5:00 p.m.

YOSEMITE LODGE AT THE FALLS

Food Court

Breakfast - 6:30 a.m. to 11:00 a.m.
Lunch - 11:30 a.m. to 2:00 p.m.
Dinner - 5:00 p.m. to 8:00 p.m.
Light menu served between meal periods

Mountain Room Bar & Lounge

4:30 p.m. to 10:30 p.m. weekdays
Noon to 10:30 p.m. weekends

Mountain Room Restaurant

5:30 p.m. to 9:00 p.m.
8:30 a.m. to noon - *Mother's Day Brunch, May 8*

Coffee Corner 6:00 a.m. to noon

THE AHWAHNEE

Dining Room

Breakfast - 7:00 a.m. to 10:30 a.m.
Lunch - 11:30 a.m. to 3:00 p.m.
Sunday Brunch - 7:00 a.m. to 3:00 p.m.
Dinner - 5:30 p.m. to 9:00 p.m.
Reservations and appropriate attire are respectfully requested. 209/372-1489

The Ahwahnee Bar

11:00 a.m. to 11:00 p.m.
Food Service - 11:00 a.m. to 9:00 p.m.

CURRY VILLAGE

Guest Lounge

8:00 a.m. to 10:00 p.m.

Curry Village Bar

5:00 p.m. to 10:00 p.m.
Noon to 10:00 p.m. *Beginning May 14*

Pavillion Buffet

Breakfast 7:00 - 10:00 a.m.
Dinner 5:30 p.m. to 8:00 p.m.

Coffee Corner

7:00 a.m. to 11:00 a.m.
7:00 a.m. to 10:00 p.m. *Beginning May 14*

Taqueria

11:00 a.m. to 5:00 p.m. Saturday & Sunday
11:00 a.m. to 5:00 p.m. Daily *Beginning May 14*

Pizza Patio

Noon to 10:00 p.m.

Happy Isles Snack Stand

11:00 a.m. to 5:00 p.m.

WAWONA HOTEL

Dining Room

Breakfast - 7:30 a.m. to 10:00 a.m.
Lunch - 11:30 a.m. to 1:30 p.m.
Dinner - 5:30 p.m. to 9:00 p.m.
Sunday Brunch - 10:30 a.m. to 1:30 p.m.
Saturday BBQ - 5:00 to 7:00 p.m.
Beginning May 21

Guest Lounge

5:00 p.m. to 9:00 p.m.

Gas Station

Wawona

9:00 a.m. to 6:00 p.m. Diesel & propane available.
Pay at the pump 24 hours with credit or debit card.

Crane Flat

Pay at the pump 24 hours with credit or debit card.

El Portal

8:00 a.m. to 5:00 p.m. Diesel available.
Pay at the pump 24 hours with credit or debit card.

Gifts, Books, & Apparel

YOSEMITE VILLAGE

The Ansel Adams Gallery

9:00 a.m. to 6:00 p.m.

Yosemite Bookstore

9:00 a.m. to 5:00 p.m. Inside Visitor Center

Village Store 8:00 a.m. to 9:00 p.m.

Habitat Yosemite

9:00 a.m. to 5:00 p.m. Thursday - Monday

Sport Shop 8:00 a.m. to 6:00 p.m.

YOSEMITE LODGE AT THE FALLS

Gift/Grocery 8:00 a.m. to 9:00 p.m.

Nature Shop 10:00 a.m. to 8:00 p.m.

THE AHWAHNEE

Gift Shop 8:00 a.m. to 10:00 p.m.

Sweet Shop 7:00 a.m. to 10:00 p.m.

CURRY VILLAGE

Mountain Shop 8:00 a.m. to 8:00 p.m.

Gift/Grocery 8:00 a.m. to 9:00 p.m.

Housekeeping Camp Grocery

8:00 a.m. to 6:00 p.m.

GLACIER POINT

Gift Shop 10:00 a.m. to 6:00 p.m.

Opens May 13, conditions permitting

WAWONA

Pioneer Gift Shop/Grocery

8:00 a.m. to 6:00 p.m.

Golf Shop 9:00 a.m. to 4:00 p.m.

MARIPOSA GROVE

Gift Shop 9:00 a.m. to 5:00 p.m.

Museum Shop

9:30 a.m. to 12:30 p.m., 1:00 pm. to 4:30 p.m.

Opens May 21, conditions permitting

Groceries

Yosemite Lodge at the Falls Gift/Grocery

8:00 a.m. to 9:00 p.m.

Village Store 8:00 a.m. to 9:00 p.m.

Degnan's Delicatessen 7:00 a.m. to 5:00 p.m.

Housekeeping Camp Store

8:00 a.m. to 6:00 p.m.

Curry Village Gift/Grocery

9:00 a.m. to 8:00 p.m.

General Park Information

Emergency 911

Fire - Police - Medical Emergency:
Dial 911, 24 hours a day (from hotel room 9-911)

Information

Road and Weather

General Park Information

209/372-0200 www.nps.gov/yose

Campground Reservations

800/436-7275 reservations.nps.gov

Medical

Yosemite Medical Clinic

Emergency care: 24 hours daily
Drop-in and urgent care: 8:00 a.m. to 7:00 p.m.

Appointments

8:00 a.m. to 5:00 p.m. Monday - Friday
9:00 a.m. to noon Saturday

Located on Ahwahnee Drive in Yosemite Valley, the clinic provides routine and emergency medical care, 24-hour paramedic/ambulance services, limited pharmacy, lab, x-ray, physical therapy, and Mountain Crisis Services for victims of domestic violence. 209/372-4637

PAD Program

Yosemite's Public Access Defibrillation (PAD) Program is designed to protect park visitors and staff from sudden cardiac arrest. All automated external defibrillator (AED) cabinets have been placed in high-risk locations and are open and accessible to anyone in the event of a medical emergency. For more information about the PAD Program, contact the Yosemite Medical Clinic.

AEDs can be found at the following locations: Valley Visitor Center, Village Store (Yosemite Village), Yosemite Lodge at the Falls, Curry Village Registration Desk, The Ahwahnee, Crane Flat Store, Wawona Hotel, and Glacier Point Gift Shop (summer) or Badger Pass Lodge (winter).

Dental Services

Adjacent to Medical Clinic. For hours, call 209/372-4200. If no answer, call 209/372-4637.

Services For Disabled

The *Yosemite Accessibility Guide* is available at park entrance stations, visitor centers, and online at www.nps.gov/yose/trip/access

TTYs are available inside The Ahwahnee, Yosemite Lodge at the Falls, and outside the Curry Village front desk.

Accommodations

For advanced reservations or information (rooms or activities), call 559/252-4848 (www.yosemitepark.com)

For availability on day of arrival, check at any front desk.

Bear Canister Rental

Available for \$5 per trip at the Yosemite Valley Visitor Center, Crane Flat Store, Curry Village Mountain Store, Wawona Store, and the Hetch Hetchy Entrance Station. Canisters may be rented or returned at any rental location in the park.

Wilderness Permits

All wilderness centers are closed for the season. Anyone going overnight into Yosemite's backcountry must have a wilderness permit. You can self-register at one of the following locations: Yosemite Valley Visitor Center, Hill's Studio porch (near Wawona Hotel), Hetch Hetchy Entrance Station, or Badger Pass A-frame building. All overnight trips leaving from Badger Pass must obtain a wilderness permit from the Badger Pass A-frame building.

Tioga Road is closed to all overnight parking.

Bears can remain active throughout the winter. Visitors heading into Yosemite's wilderness areas are highly encouraged to use bear resistant food canisters.

Kennel

Beginning May 28, conditions permitting. 8:00 a.m. to 5:00 p.m. Located at Yosemite Valley Stables.

Recreation

Conditions permitting.

YOSEMITE MOUNTAINEERING SCHOOL AND GUIDE SERVICE

Yosemite Mountaineering School and Guide Service offers lessons and guided climbing at all levels, overnight backpacking, and guided day hikes to spectacular areas of Yosemite Valley and the high country.

Curry Village 209/372-8444

8:30 a.m. - noon, 1:00 p.m. - 4:00 p.m.

BICYCLE RENTALS

Yosemite Lodge 10:00 a.m. to 5:30 p.m.

SWIMMING POOL

Curry Village

10:00 a.m. to 5:00 p.m. *Opens May 29*

Yosemite Lodge

Dawn to dusk *Opens May 25*

Wawona Hotel

9:00 a.m. to 6:00 p.m. *Opens May 30*

GOLF

Wawona Hotel 9:00 a.m. - 4:00 p.m.

TRAIL RIDES

Yosemite Valley Stable 7:00 a.m. - 5:00 p.m.

Opens for season May 5 (weather permitting)

TENNIS COURTS

Wawona Hotel 9:00 a.m. - 4:00 p.m.

Tours

Yosemite Lodge Tour Desk

7:30 a.m. to 7:00 p.m. Sunday - Thursday
7:30 a.m. to 8:00 p.m. Friday - Saturday

Curry Village Tour Kiosk 7:30 a.m. to 3:30 p.m.

Big Trees Tour Desk 9:00 a.m. to 5:00 p.m.

SIGHTSEEING TOURS

Valley Floor Tour

This 26-mile, 2-hour tour departs several times daily from Yosemite Lodge in Yosemite Valley. Check any tour desk for hours. Conditions permitting.

Big Trees Tram Tour

9:00 a.m. to 5:00 p.m. Check any tour desk for hours. Conditions permitting.

Wawona Grocery Store 8:00 a.m. to 6:00 p.m.

Crane Flat 8:00 a.m. to 5:00 p.m.

El Portal Market 9:00 a.m. to 7:00 p.m.

Tuolumne Meadows Store 9:00 a.m. to 5:00 p.m. *Opens May 26, conditions permitting*

Showers & Laundromat

SHOWERS

Curry Village 24 hours

Housekeeping Camp 8:00 a.m. to 10:00 p.m.

LAUNDROMAT

Housekeeping Camp 8:00 a.m. to 10:00 p.m.

Recycling

Village Store Recycling Center

Noon to 5:00 p.m.

Post Offices

Main Post Office - Yosemite Village

Monday - Friday 8:30 a.m. to 5:00 p.m.
Saturday 10:00 a.m. to noon

Yosemite Lodge at the Falls Post Office

Monday - Thursday 11:30 a.m. to 2:45 p.m.
Friday 11:30 a.m. to 4:30 p.m.

Wawona Post Office

Monday - Friday 9:00 a.m. to 5:00 p.m.
Saturday 9:00 a.m. to noon

El Portal Post Office

Monday - Friday 8:30 a.m. to 12:30 p.m.,
1:30 p.m. to 5:00 p.m.

Auto Service, Towing, and Repair (AAA)

Village Garage

8:00 a.m. to noon, 1:00 p.m. to 5:00 p.m.
Towing 24 hours. No gas. Propane available until 4:00 p.m. 209/372-8320

Service Organizations

AI-Anon

7:00 p.m. Wednesday DNC General Office Building (Executive Conference Room) Yosemite Village

Alcoholics Anonymous

7:30 p.m. Sunday, Tuesday, and Thursday
DNC General Office Building (Employee Training Center) Yosemite Village

Narcotics Anonymous

7:30 p.m. Saturday DNC General Office Building (Employee Training Center) Yosemite Village

Lions Club

Meets first and third Thursdays of each month at noon, The Ahwahnee.

Call 209/372-4475 for information.

Rotary International

Meets Thursdays for lunch at noon in The Ahwahnee Mural Room. Visiting Rotarian families and guests welcome. For meeting reservations or information, call 209/372-1401.

Religious Services

YOSEMITE COMMUNITY CHURCH

(Nondenominational Christian)

Pastor Brent Moore 209/372-4831

Counseling and various Bible studies provided.

Call pastor for appointment.

Yosemite Valley Chapel (year-round)

Worship Services

Sunday 9:15 a.m. (*Children's Church and Nursery*)

Sunday 6:30 p.m. (*no childcare provided*)

Thursday 7:00 p.m. (*no childcare provided*)

ROMAN CATHOLIC

Rev. Raymond J. Duffy 209/372-4729

Mass in Yosemite Valley

Visitor Center Theater

Saturday 4:30 p.m. *Beginning May 28*

Sunday 11:00 a