



Experience Your America

Yosemite Today

November 1 - November 28, 2005

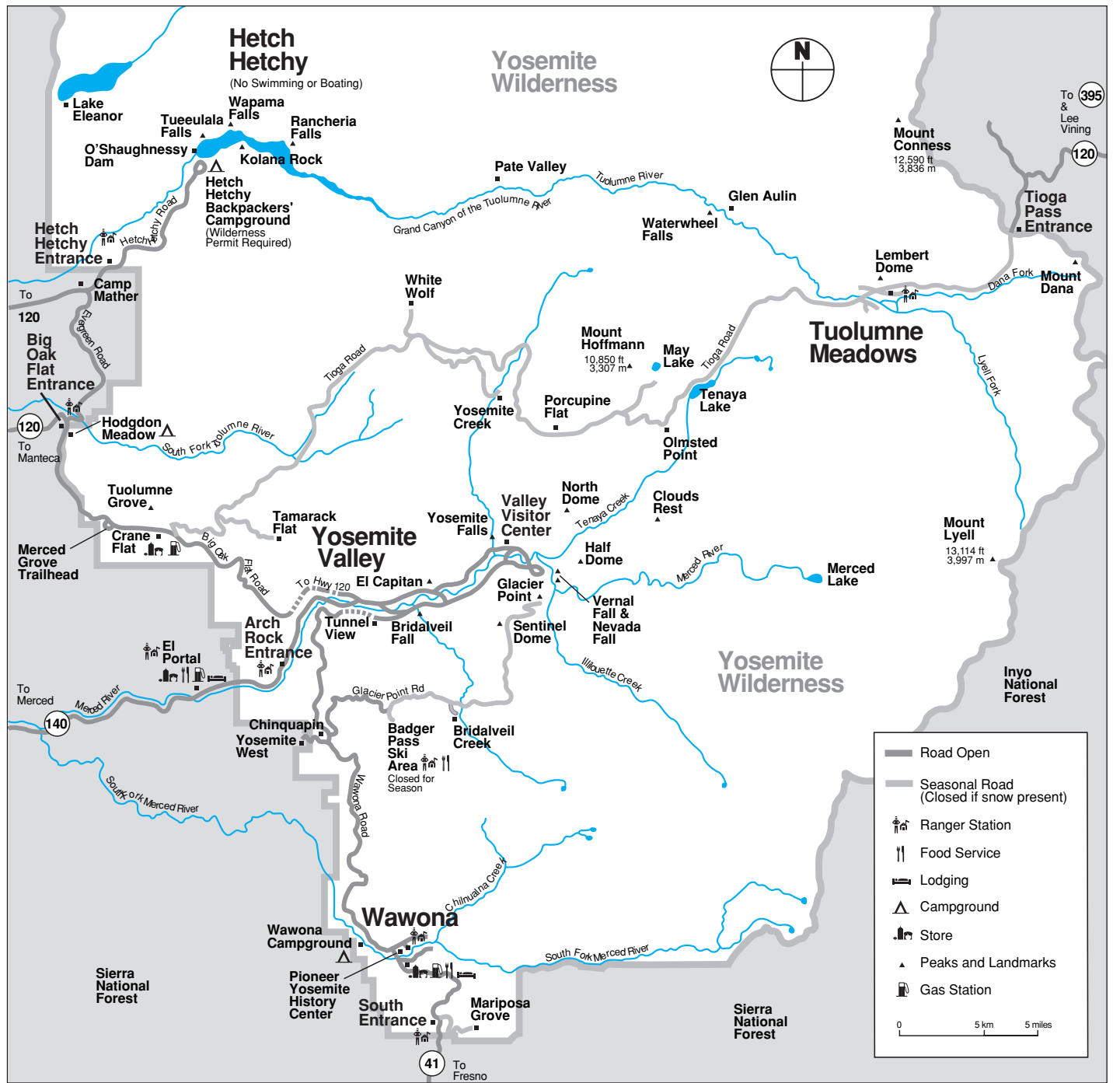
Yosemite National Park

ROAD INFO

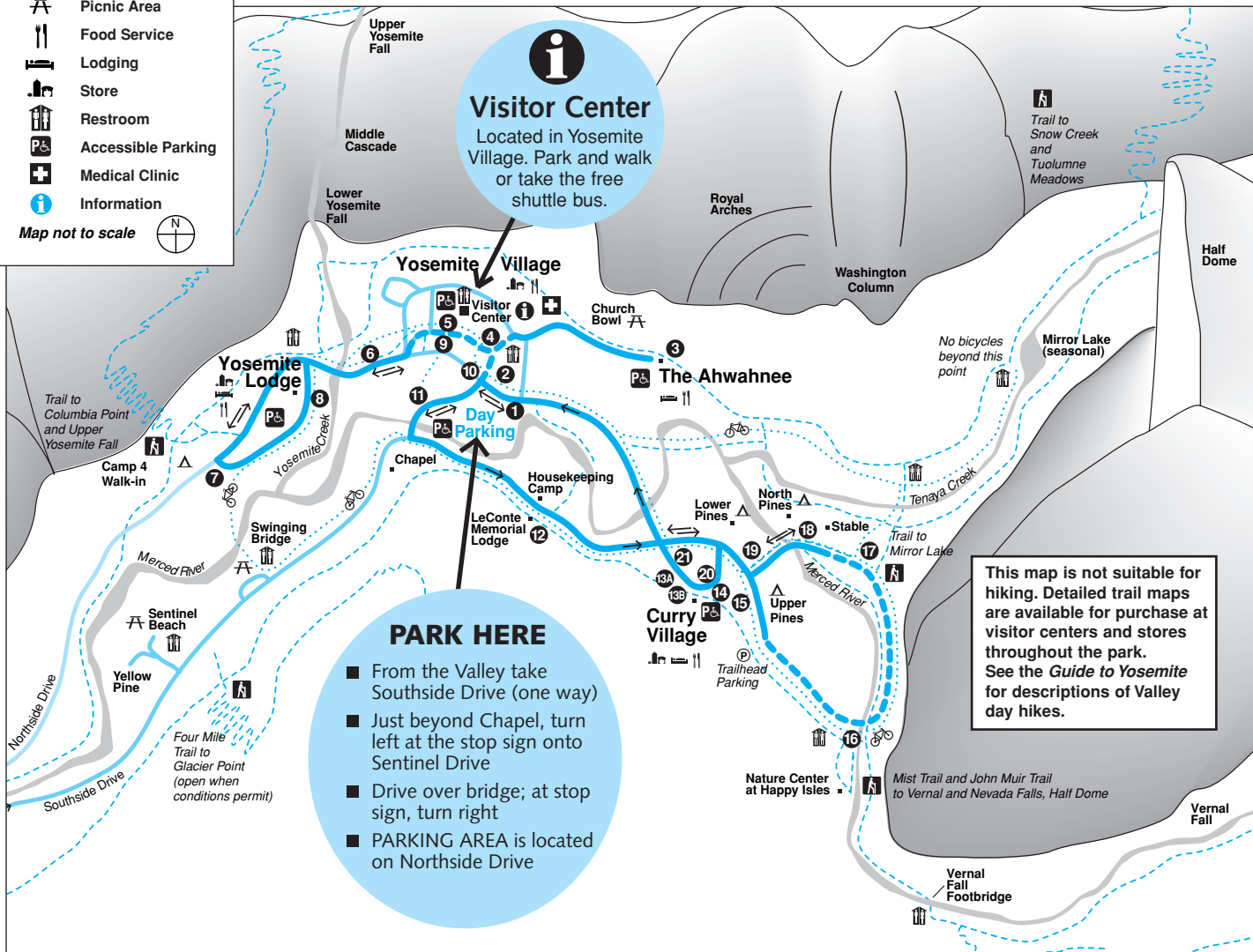
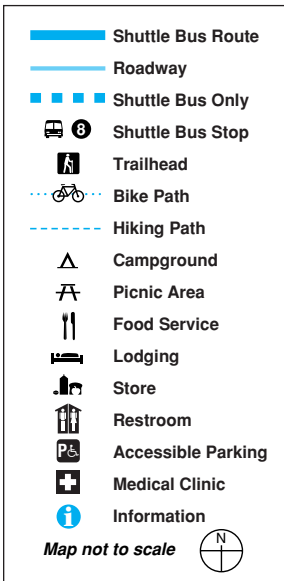
Due to construction, you may experience short delays or temporary detours on some park roads. Call 209/372-0200 for recorded road information.

OVERNIGHT PARKING

Parking along Tioga Road and Glacier Point Road (beyond Badger Pass Ski Area) will be limited to day use. No overnight parking will be permitted.



Yosemite Valley Shuttle Bus Map



PARK HERE
From the Valley take Southside Drive (one way)
Just beyond Chapel, turn left at the stop sign onto Sentinel Drive
Drive over bridge; at stop sign, turn right
PARKING AREA is located on Northside Drive



Ride the Free Yosemite Valley Shuttle Bus

Shuttle buses operate daily at 30-minute intervals. All buses follow the same route, serving stops in numerical order.

SCHEDULE
7:00 a.m. - 10:00 p.m.

- 1 Yosemite Village / Day Parking
- 2 Yosemite Village
- 3 The Ahwahnee
- 4 Yosemite Village / Degnan's Complex
- 5 Visitor Center
- 6 Lower Yosemite Fall
- 7 Camp 4/Upper Yosemite Fall Trailhead
- 8 Yosemite Lodge
- 9 Visitor Center
- 10 Yosemite Village
- 11 Sentinel Bridge / Yosemite Chapel
- 12 Housekeeping Camp / LeConte Memorial Lodge
- 13A Curry Village Rental Center
- 13B Curry Village Registration Desk
- 14 Curry Village Parking
- 15 Upper Pines Campground*
- 16 Happy Isles / John Muir Trailhead*
- 17 Mirror Lake Junction*
- 18 Stable*
- 19 Lower Pines Campground
- 20 Curry Village Parking
- 21 Curry Village Rental Center

* No service after dark. Service to these locations ceases after the first major snow.

YOSEMITE AREA REGIONAL TRANSPORTATION SYSTEM



For bus schedules to and from the Yosemite area, call 1-877-98-YARTS or visit YARTS online at www.yarts.com

Scheduled Events

Programs printed in color are especially for children and their families.

- NPS = National Park Service
- DNC = Delaware North Companies at Yosemite
- AAG = The Ansel Adams Gallery
- AAC = American Alpine Club
- SC = Sierra Club
- YA = Yosemite Association
- YF = Yosemite Fund
- S = Programs offered for a fee



Indicates facilities accessible for visitors in wheelchairs. Short steep inclines may be encountered.

	SUNDAY November 6, 13, 20 & 27	MONDAY November 7, 14, 21 & 28	TUESDAY November 1, 8, 15, & 22	WEDNESDAY November 2, 9, 16, & 23
Yosemite Valley	9:00am WEE WILD ONES (November 27 only) 45 min. Stories and activities for kids 6 and under. Ahwahnee Great Lounge Fireplace (DNC) 10:30am Ranger Talk—Yosemite's First People ½ hr. Inside Yosemite Museum (NPS) 2:00pm Ranger Walk—Rivers and Waterfalls 1 hr. Front of Yosemite Valley Visitor Center (NPS) 7:30pm Film - Ansel Adams 1 hr. Check local postings for venue & topic (AAG) &	10:30am Ranger Talk—Yosemite's First People ½ hr. Inside Yosemite Museum (NPS) 2:00pm Ranger Walk—A Changing Yosemite 1 hr. Front of Yosemite Valley Visitor Center (NPS) 7:30pm Evening Program 1 hr. Check local postings for venue and topic (DNC) &	9:00am Photography Walk 2+ hrs. Limited space advance sign-up required. Meet at The Ansel Adams Gallery conditions permitting (AAG) 10:30am Ranger Talk—Yosemite's First People ½ hr. Inside Yosemite Museum (NPS) Noon Yosemite Forum—Meadows, Wetlands and Floodplains (November 8 only) 1 hr. Yosemite Valley Visitor Center Auditorium (NPS) & 2:00pm Ranger Walk—Bears 1 hr. Front of Yosemite Valley Visitor Center (NPS) 7:30pm Evening Program (except November 1) 1 hr. Check local postings for venue and topic (DNC) &	9:00am WEE WILD ONES (November 27 only) 45 min. Stories and activities for kids 6 and under. Ahwahnee Great Lounge Fireplace (DNC) 10:30am Ranger Talk—Yosemite's First People ½ hr. Inside Yosemite Museum (NPS) 2:00pm Ranger Walk—Rivers and Waterfalls 1 hr. Front of Yosemite Valley Visitor Center (NPS) 7:30pm Evening Program 1 hr. Check local postings for venue & topic (AAG) &
Wawona			5:30pm Vintage Music of Yosemite 4 hrs. Live music with pianist/singer Tom Bopp. Wawona Hotel lounge (DNC)	5:30pm Vintage Music of Yosemite 4 hrs. Live music with pianist/singer Tom Bopp. Wawona Hotel lounge (DNC)

Yosemite Valley



Tunnel View After a Storm

Photo by Colleen Brown

SPIRIT OF YOSEMITE

Don't miss this award-winning, state-of-the-art film! Shown every 30 minutes at the Yosemite Valley Visitor Center Theater, free of charge. See map on front page for directions to Day Parking. Take shuttle to stop #5.

Pick up your free Yosemite Map and Guide at the Yosemite Valley Visitor Center.

Visitor Center and Bookstore

Open 9:00 a.m. to 5:00 p.m. Located in Yosemite Village just west of the main post office (shuttle stops #5 and #9). Information, maps, books, exhibits, bear canister rental and self-registration for wilderness permits. & TTY

FILM

Spirit of Yosemite

This inspiring state-of-the-art visitor orientation film provides a stunning overview of Yosemite's splendor. It is shown every 30 minutes from Monday to Saturday 9:30 a.m. to 4:30 p.m., and Sunday noon to 4:30 p.m. in the Yosemite Valley Visitor Center Theater. Closed captioning available. & CC

Yosemite Museum

Located in Yosemite Village next to the Yosemite Valley Visitor Center. &

FEATURES

Indian Cultural Exhibit

Open 9:00 a.m. to 4:00 p.m. (closed for lunch). Displays interpret the cultural history of Yosemite's native Miwuk and Paiute people from 1850 to the present. Demonstrations of traditional skills are presented. No food or drink permitted.

Yosemite Museum Store

Open Thursday through Monday 9:00 a.m. to 4:00 p.m. (closed for lunch). Offering traditional American Indian arts and crafts and books on related subjects.

The Indian Village of Ahwahnee

Located behind the Yosemite Museum and open during daylight hours. Occasionally, Indian Cultural Program staff provide demonstrations or programs about Ahwahneechee skills and culture. &

Yosemite Cemetery

This historic cemetery is located across the street and just west of the Yosemite Museum. People buried here include American Indians and others who played an important role in the development of what is now Yosemite National Park. A *Guide to the Yosemite Cemetery* is available at the Yosemite Valley Visitor Center.

The Ansel Adams Gallery

Located in Yosemite Village next to the Yosemite Valley Visitor Center. Open daily from 9:00 a.m. to 5:00 p.m. The Gallery offers the work of Ansel Adams, contemporary photographers and other fine artists. In addition, a wide selection of handcrafts, books, gifts, digital services and photography supplies are offered. Scheduled activities are listed on the front porch of the Gallery. For more information, call 209-372-4413 or visit www.anseladams.com.

GALLERY EXHIBIT

Water as Inspiration

October 24 - November 24

You are invited to this diverse group show celebrating water in all its forms—raging waterfalls, pure snow, rain clouds, mist and icy rivers stir the imagination and soul. Water and its very visible effects are so omnipresent that we often take it for granted. Yosemite Valley and other glacial formations were sculpted by water's unstoppable movement. A gentle rain can be soothing, and yet we are reminded of water's power by storms and floods. Color and black and white landscapes by our represented artists come together to express the power and beauty of this life-giving element.

Yosemite Today

Published by the National Park Service, in cooperation with Delaware North Companies at Yosemite.

Editor **Andy Fristensky**
Design / Production **Skip Gaynard Designs**
Printing **Casey Printing, Inc.**

We're Interested . . .

We are always looking for ways to improve our visitor publications. You can help by sending your comments via e-mail to Andy_Fristensky@nps.gov or fax to 209/372-0617.

November 1 - November 28, 2005

WEDNESDAY November 2, 9, 16, & 23	THURSDAY November 3, 10, 17, & 24	FRIDAY November 4, 11, 18, & 25	SATURDAY November 5, 12, 19, & 26
<p>WILD ONES (November 2 only) 45 min. Stories and activities for kids 6 and under. Ahwahnee Great Lounge Fireplace</p> <p>Ranger Talk—Yosemite's First People 1 hr. Inside Yosemite Museum (NPS)</p> <p>Ranger Walk—Geology 1 hr. Front of Yosemite Valley Visitor Center</p> <p>Evening Program 1 hr. Check local postings for venue and topic (DNC) &</p>	<p>9:00am Photography Walk 2+ hrs. Limited space advance sign-up required. Meet at The Ansel Adams Gallery conditions permitting (AAG)</p> <p>10:30am Ranger Talk—Yosemite's First People 1/2 hr. Inside Yosemite Museum (NPS)</p> <p>2:00pm Ranger Walk—Yosemite's Legacy 1 hr. Front of Yosemite Valley Visitor Center (NPS)</p> <p>3:00pm WEE WILD ONES (November 24 only) 45 min. Stories and activities for kids 6 and under. Yosemite Lodge at the Falls Amphitheater (DNC)</p> <p>7:30pm Evening Program 1 hr. Check local postings for venue and topic (DNC) &</p>	<p>10:30am Ranger Talk—Yosemite's First People 1/2 hr. Inside Yosemite Museum (NPS)</p> <p>2:00pm Ranger Walk—Wild about Wildlife 1 hr. Front of Yosemite Valley Visitor Center (NPS)</p> <p>4:00pm FAMILY STROLL (November 25 only) 1 hr. The Ahwahnee Patio (DNC)</p> <p>7:30pm Evening Program 1 hr. Check local postings for venue and topic (DNC) &</p>	<p>9:00am Photography Walk 2+ hrs. Limited space advance sign-up required. Meet at The Ansel Adams Gallery conditions permitting (AAG)</p> <p>WEE WILD ONES (November 5 and 19 only) 45 min. Stories and activities for kids 6 and under. Ahwahnee Great Lounge Fireplace (DNC)</p> <p>10:30am Ranger Talk—Yosemite's First People 1/2 hr. Inside Yosemite Museum (NPS)</p> <p>2:00pm Ranger Walk—Trees 1 hr. Front of Yosemite Valley Visitor Center (NPS)</p> <p>3:00pm Fine Print Viewing 1 hr. Very limited space. Sign-up in advance. Meet in The Ansel Adams Gallery (AAG)</p> <p>4:00pm CHILDREN'S STORYTIME 1/2 hr. For children 7 and under. Children must be accompanied by an adult. Ansel Adams Gallery front porch (AAG) &</p> <p>4:00pm Autumn Twilight Stroll (November 26 only) 1 hr. The Ahwahnee Patio (DNC)</p> <p>7:30pm Evening Program 1 hr. Check local postings for venue and topic (DNC) &</p>
<p>Vintage Music of Yosemite 4 hrs. Live music with pianist/singer Tom Bopp. Wawona Hotel lounge (DNC)</p>	<p>5:30pm Vintage Music of Yosemite 4 hrs. Live music with pianist/singer Tom Bopp. Wawona Hotel lounge (DNC)</p>	<p>5:30pm Vintage Music of Yosemite 4 hrs. Live music with pianist/singer Tom Bopp. Wawona Hotel lounge (DNC)</p>	<p>5:30pm Vintage Music of Yosemite 4 hrs. Live music with pianist/singer Tom Bopp. Wawona Hotel lounge (DNC)</p>

Wawona & Mariposa Grove

Evening Programs

Join pianist/singer Tom Bopp in the Wawona Hotel lobby from 5:30pm to 9:30pm., Tuesday through Saturday, as he performs songs and stories from Yosemite's past. Once or twice a week, he will present an hour-long interpretive programs on the vintage songs of Yosemite or the history of Wawona with slide or music accompaniment. Check with Tom at the piano for dates and times. ♿

Wilderness Permits

Self-registration for wilderness permits will be available on the front porch of Hill's Studio (near Wawona Hotel). Bear canister rental is available at the Wawona Store.

Pioneer Yosemite History Center

Go back to a time of horse-drawn wagons, a covered bridge, and log cabins. A visit to the Pioneer Yosemite History Center explores Yosemite's history and explains how Yosemite was the inspiration for national parks across America and around the world. The Center is always open, and interpretive signs and brochures are available. ♿

To Get to Mariposa Grove

Allow 1 1/4 hours driving time to the Mariposa Grove from Yosemite Valley. Cars are prohibited beyond the parking area in the Grove, but several giant sequoias can be seen from there. Information about access for the disabled is available at the tram boarding area. The access road to the Grove may close due to snow or intermittently to limited parking. Trailers and motor homes are prohibited on the Mariposa Grove Road from the South Entrance to Mariposa Grove.

Walking through the Grove

The trailhead for walking up through the Grove is located at the far end of the parking area. Interpretive signs between the trailhead and the California Tree provide a self-guiding tour. Written translations are available at the trailhead in Spanish, German, French, and Japanese.

Mariposa Grove Tram Tour

Audio tram tours run everyday in the Mariposa Grove of Giant Sequoias. Tours are 1 1/4 hours through the lower and upper groves. The audio tour is available in 5 languages, as well as in audio description. Tours depart daily from 10:00 a.m. to 4:00 p.m. Call 209/375-1621 for information and tour times. Closes for season after first snow.

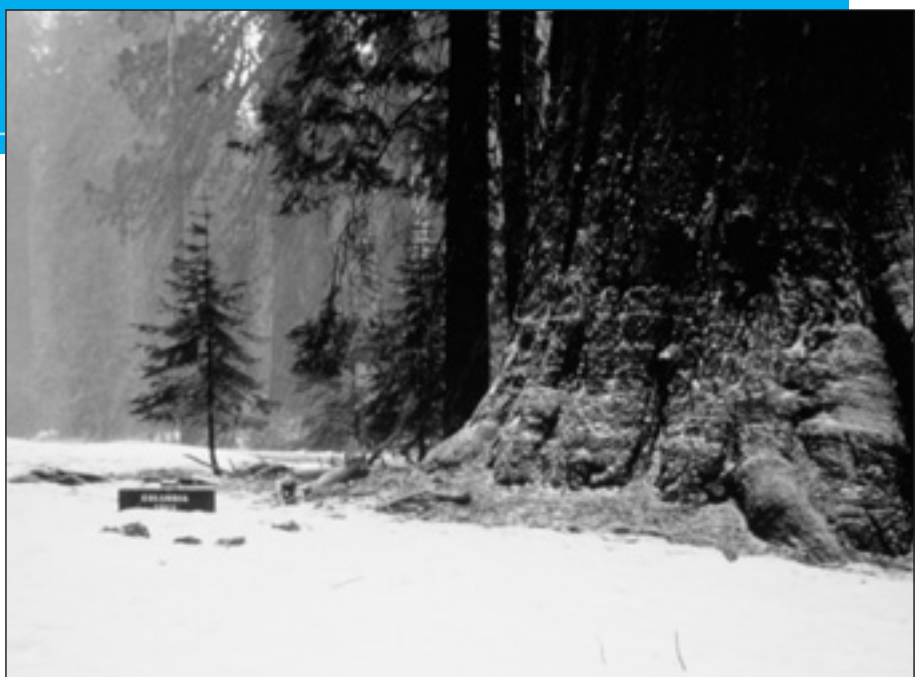
Yosemite's Other Sequoia Groves

Tuolumne Grove

The Tuolumne Grove of Giant Sequoias is near Crane Flat at the intersection of the Big Oak Flat Road (Highway 120 West) and the Tioga Road. The former route of the Big Oak Flat Road leads downhill from Crane Flat into the Tuolumne Grove of Big Trees, a cluster of about 25 sequoias. Now closed to cars, this 2-mile (3.2 km) round-trip has an elevation change of 500 feet (150 meters). The downhill walk is relatively easy, though it is moderately strenuous on the uphill return. Once in the Tuolumne Grove, there is an easy half-mile, self-guiding nature trail.

Merced Grove

Yosemite's quietest stand of sequoias is the Merced Grove, accessible only on foot. It's a 4-mile roundtrip hike into the grove from the Big Oak Flat Road (Highway 120 West). Located 3.5 miles north of Crane Flat or 4.5 miles south of the Big Oak Flat entrance, the trailhead is marked by a post labeled B-10 and a road sign. Allow 3 hours for the round-trip hike to this group of about 20 sequoias.



Mariposa Grove of Giant Sequoias

NPS Photo

DISTANCE & ELEVATION

DESTINATION	DISTANCE FROM TRAILHEAD	ELEVATION GAIN
Grizzly Giant	0.8 mile / 1.3km	400ft / 122m
Grove Museum	2.1 miles / 3.5km	800ft / 292m
Fallen Tunnel Tree	2.5 miles / 4.0km	1,000ft / 305m
Wawona Point	3.0 miles / 4.8km	1,200ft / 438m

Night Sky Information



Take advantage of the opportunities in Yosemite to view the wonders of the night sky. Here are some sights to look for while you are out during the night hours. During November, Mars will be in the spotlight. The brilliant yellow-orange planet can be seen in the eastern sky during the evening hours.

November 3 Using binoculars, Mercury can be seen 40 minutes after sunset low in the southwest, to the right of Venus. The crescent Moon will appear near Mercury.

November 5 At twilight, look to the southwest for Venus and the crescent Moon.

November 6 Tonight Venus will appear to Moon's lower right. Mars will rise at sunset, circle the night sky, and set around sunrise tomorrow.

November 14 Almost-full Moon and fiery Mars shine close together all night.

November 15 Full Moon tonight, called the Frost Moon, rising at 4:31 p.m. Brilliant Mars shines to the upper right of Moon during early evening.

November 17 The Lenoid meteor shower peaks tonight, but due to the almost full Moon, the shower will be hard to see.

