



Experience Your America

Yosemite Today

November 29, 2005 - January 2, 2006

Yosemite National Park

ROAD INFO

Due to construction, you may experience short delays or temporary detours on some park roads. Call 209/372-0200 for recorded road information.

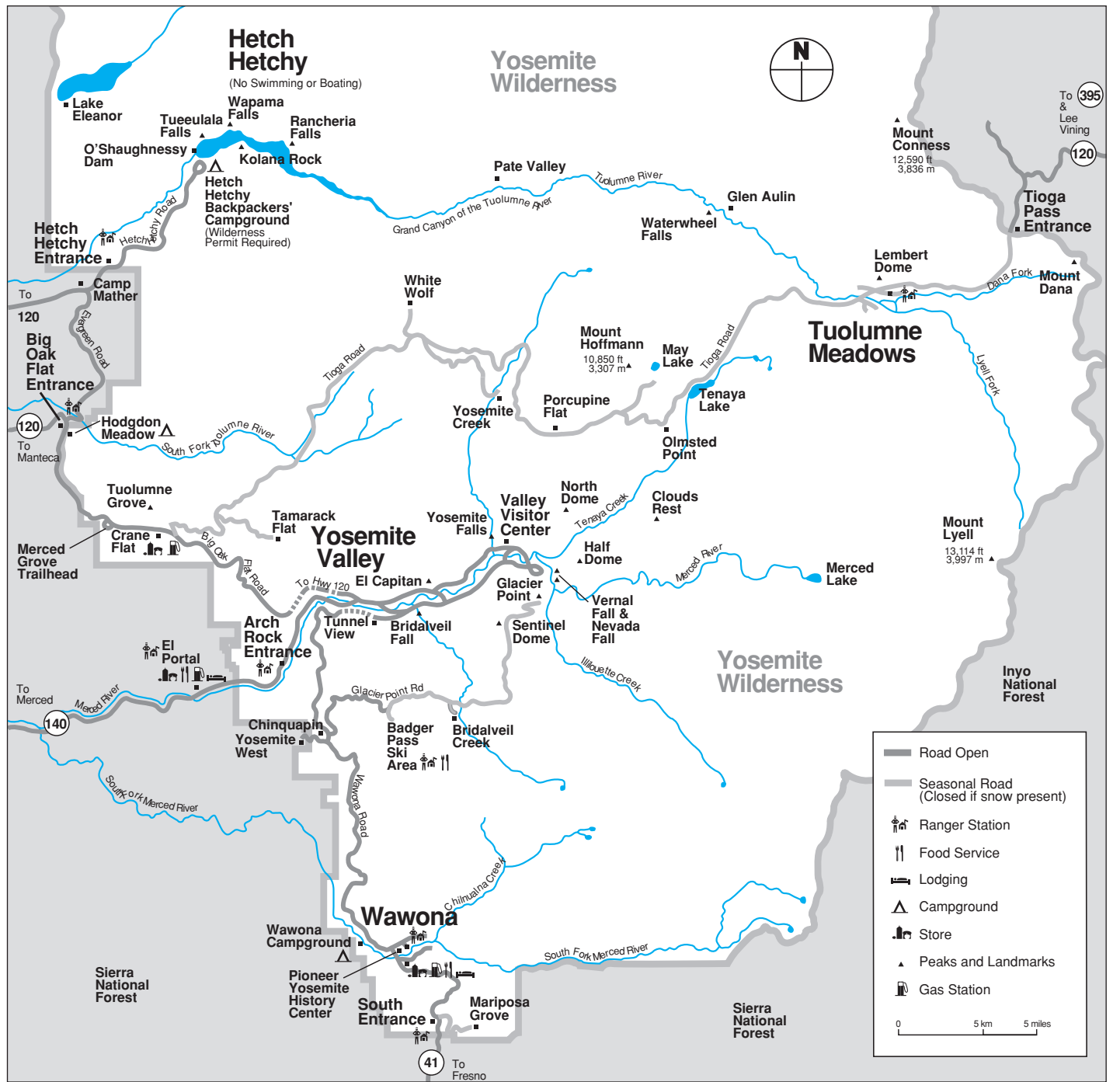
SPIRIT OF YOSEMITE



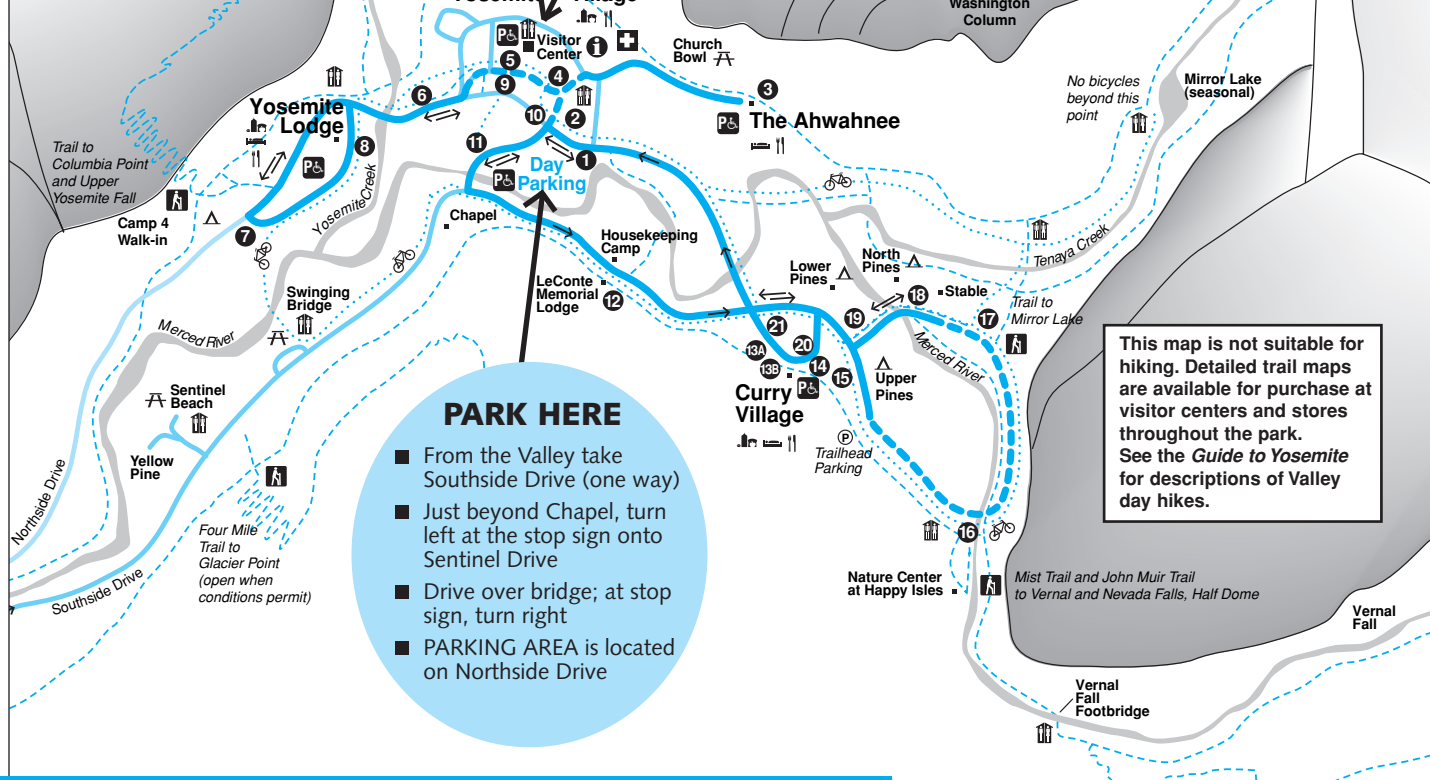
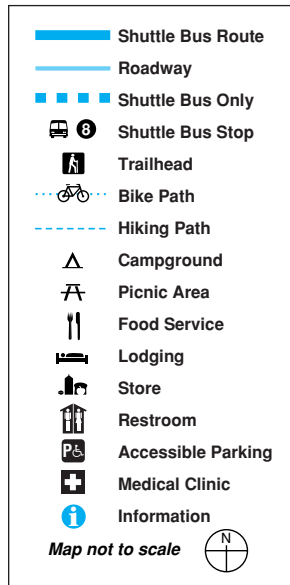
Don't miss this award-winning, state-of-the-art film! Shown every 30 minutes at the Yosemite Valley Visitor Center Theater, free of charge.

See map on front page for directions to Day Parking. Take shuttle to stop #5.

Pick up your free Yosemite Map and Guide at the Yosemite Valley Visitor Center.



Yosemite Valley Shuttle Bus Map



Ride the Free Yosemite Valley Shuttle Bus

Shuttle buses operate daily at 30-minute intervals. All buses follow the same route, serving stops in numerical order.

SCHEDULE

7:00 a.m. - 10:00 p.m.

- 1 Yosemite Village / Day Parking
- 2 Yosemite Village
- 3 The Ahwahnee
- 4 Yosemite Village / Degnan's Complex
- 5 Visitor Center
- 6 Lower Yosemite Fall
- 7 Camp 4/Upper Yosemite Fall Trailhead
- 8 Yosemite Lodge
- 9 Visitor Center
- 10 Yosemite Village
- 11 Sentinel Bridge / Yosemite Chapel
- 12 Housekeeping Camp / LeConte Memorial Lodge
- 13A Curry Village Rental Center
- 13B Curry Village Registration Desk
- 14 Curry Village Parking
- 15 Upper Pines Campground
Closed for season
- 16 Happy Isles / John Muir Trailhead
Closed for season
- 17 Mirror Lake Junction
Closed for season
- 18 Stable
Closed for season
- 19 Lower Pines Campground
- 20 Curry Village Parking
- 21 Curry Village Rental Center

YOSEMITE AREA REGIONAL TRANSPORTATION SYSTEM



For bus schedules to and from the Yosemite area, call 1-877-98-YARTS or visit YARTS online at www.yarts.com

Scheduled Events

Programs printed in color are especially for children and their families.

NPS = National Park Service
 DNC = Delaware North Companies at Yosemite
 AAG = The Ansel Adams Gallery
 AAC = American Alpine Club
 SC = Sierra Club
 YA = Yosemite Association
 YF = Yosemite Fund
 S = Programs offered for a fee



Indicates facilities accessible for visitors in wheelchairs. Short steep inclines may be encountered.

	SUNDAY December 4, 11, 18, 25 & January 1	MONDAY December 5, 12, 19, 26 & January 2	TUESDAY November 29, December 6, 13, 20 & 27	WE Nov
Yosemite Valley	<p>9:00am WEE WILD ONES (December 11 and 18 only) 45 min. Stories and activities for kids 6 and under Ahwahnee Great Lounge Fireplace (DNC)</p> <p>10:30am Ranger Talk—Yosemite's First People ½ hr. Inside Yosemite Museum (NPS)</p> <p>11:00am STORY TIME (December 25 and January 1 only) ½ hr. Come hear Yosemite-related stories read aloud for children 7 and under Yosemite Lodge Cliff Room (Dec. 25) Ahwahnee Great Lounge Fireplace (Jan. 1) (DNC)</p> <p>2:00pm Ranger Walk—Rivers and Waterfalls 1½ hrs. Front of Yosemite Valley Visitor Center (NPS)</p> <p>4:00pm Winter Theater Live! (December 25 only) <i>The Spirit of John Muir: Stories of Ice and Snow</i> 1 hr. See details below \$ (DNC)</p> <p>7:00pm Film—Ansel Adams (except December 25) 1 hr. Check local postings for venue and topic (AAG) &</p>	<p>10:30am Ranger Talk—Yosemite's First People ½ hr. Inside Yosemite Museum (NPS)</p> <p>11:00am STORY TIME (December 19 only) ½ hr. Come hear Yosemite-related stories read aloud for children 7 and under Ahwahnee Great Lounge Fireplace (DNC)</p> <p>2:00pm Ranger Walk—A Changing Yosemite 1½ hrs. Front of Yosemite Valley Visitor Center (NPS)</p> <p>7:00pm Evening Program 1 hr. Check local postings for venue and topic (DNC) &</p>	<p>9:00am Photography Walk 2+ hrs. Limited space advance sign-up required. Meet at The Ansel Adams Gallery, conditions permitting (AAG)</p> <p>10:30am Ranger Talk—Yosemite's First People ½ hr. Inside Yosemite Museum (NPS)</p> <p>11:00am Yosemite Forum—Yosemite's Spotted Owls (December 13 only) 1 hr. Yosemite Valley Visitor Center Theater (NPS) &</p> <p>1:00pm STORY TIME (December 20 only) ½ hr. Come hear Yosemite-related stories read aloud for children 7 and under Ahwahnee Great Lounge Fireplace (DNC)</p> <p>2:00pm Ranger Walk—Bears 1½ hrs. Front of Yosemite Valley Visitor Center (NPS)</p> <p>3:00pm STORY TIME (December 27 only) ½ hr. Come hear Yosemite-related stories read aloud for children 7 and under Ahwahnee Great Lounge Fireplace (DNC)</p> <p>7:00pm Evening Program 1 hr. Check local postings for venue and topic (DNC) &</p> <p>8:00pm Winter Theater Live! (December 20 only) <i>The Spirit of John Muir: Stories of Ice and Snow</i> 1 hr. See details below \$ (DNC)</p>	<p>9:00am WEE 45 min under)</p> <p>10:30am Ranger ½ hr. 1</p> <p>1:00pm STOR (Decer ½ hr. read a Ahwah</p> <p>2:00pm Ranger Front</p> <p>NPS 3 hrs. Yosemite (NPS)</p> <p>4:00pm Winte (Decer <i>The Sp and S</i></p> <p>5:00pm User 1½ hrs Visitor</p> <p>7:00 pm Eveni 1 hr. C topic (</p>
Badger Pass	<p>10:30am Ranger Snowshoe Walk (December 18, 25, & January 1 only) 2 hrs. See details below (NPS) \$</p>	<p>10:30am Ranger Snowshoe Walk (December 19, 26, & January 2 only) 2 hrs. See details below (NPS) \$</p>	<p>10:30am Ranger Snowshoe Walk (December 20 & 27 only) 2 hrs. See details below (NPS)</p>	<p>10:30am Ranger (Decer 2 hrs.</p>

Yosemite Valley



Experience Your America PHOTOGRAPHY EXHIBIT BY STAN JORSTAD

Come to the Yosemite Museum Gallery and enjoy panoramic photography by Stan Jorstad. This collection includes one photograph from each of fifty-eight different national parks. The exhibit will be open daily.

Visitor Center and Bookstore

Open 9:00 a.m. to 5:00 p.m. Located in Yosemite Village just west of the main post office (shuttle stops #5 and #9). Information, maps, books, exhibits, bear canister rental and self-registration for wilderness permits. & TTY

FILM

Spirit of Yosemite

This inspiring state-of-the-art visitor orientation film provides a stunning overview of Yosemite's splendor. It is shown every 30 minutes from Monday to Saturday 9:30 a.m. to 4:30 p.m., and Sunday noon to 4:30 p.m. in the Yosemite Valley Visitor Center Theater. Closed captioning available. & CC

Yosemite Museum

Located in Yosemite Village next to the Yosemite Valley Visitor Center. &

FEATURES

Museum Gallery

Open 9:00 a.m. to 4:00 p.m. (closed for lunch). *Experience Your America* photography exhibit will be displayed, featuring panoramic images of national parks by photographer Stan Jorstad.

Indian Cultural Exhibit

Open 9:00 a.m. to 4:00 p.m. (closed for lunch). Displays interpret the cultural history of Yosemite's native Miwuk and Paiute people from 1850 to the present. Demonstrations of traditional skills are presented. No food or drink permitted.

Yosemite Museum Store

Open Thursday through Monday 9:00 a.m. to 4:00 p.m. (closed for lunch). Offering traditional American Indian arts and crafts and books on related subjects.

The Indian Village of Ahwahnee

Located behind the Yosemite Museum and open during daylight hours. Occasionally, Indian Cultural Program staff provide demonstrations or programs about Ahwahneechee skills and culture. &

Yosemite Cemetery

This historic cemetery is located across the street and just west of the Yosemite Museum. People buried here include American Indians and others who played an important role in the development of what is now Yosemite National Park. A *Guide to the Yosemite Cemetery* is available at the Yosemite Valley Visitor Center.

The Ansel Adams Gallery

Located in Yosemite Village next to the Yosemite Valley Visitor Center. Open daily from 9:00 a.m. to 5:00 p.m. The Gallery offers the work of Ansel Adams, contemporary photographers and other fine artists. In addition, a wide selection of handcrafts, books, gifts, digital services and photography supplies are offered. Scheduled activities are listed on the front porch of the Gallery. For more information, call 209-372-4413 or visit www.anseladams.com.

GALLERY EXHIBIT

Michael Frye Photography

Enjoy beautiful new images and old favorites of Yosemite and the West. Michael is the author of *The Photographer's Guide to Yosemite* and his work is featured in *Yosemite Meditations*.

A Yosemite Holiday to Remember

DECEMBER 14, 2005 to JANUARY 1, 2006

Caroling, concerts, & holiday cheer will ring throughout Yosemite Valley!

Check local listings for a schedule of special events.

Yosemite Winter Theater

THE SPIRIT OF JOHN MUIR: STORIES OF ICE AND SNOW
 1hr. Yosemite Lodge at the Falls Cliff Room

Actor Lee Stetson portrays John Muir as he delights audiences with tales of Muir's daring winter adventures.

Tickets may be purchased in advance from the Yosemite Lodge at the Falls tour desk, or if seating is available, at the door. See schedule above for times and locations. &

Family Winter Celebration

DECEMBER 31
 1:00 - 4:00 p.m.

Curry Village Guest Lounge

Join park interpretive staff for an afternoon of crafts, learning stations, walks, and winter fun!

November 29, 2005 - January 2, 2006

WEDNESDAY November 30, December 7, 14, 21, & 28	THURSDAY December 1, 8, 15, 22 & 29	FRIDAY December 2, 9, 16, 23 & 30	SATURDAY December 3, 10, 17, 24 & 31
<p>WILD ONES (Dec. 7 and 14 only) 45 min. Stories and activities for kids 6 and under. Ahwahnee Great Lounge Fireplace (DNC)</p> <p>Ranger Talk-Yosemite's First People 1/2 hr. Inside Yosemite Museum (NPS)</p> <p>STORY TIME (December 21 only) 1/2 hr. Come hear Yosemite-related stories read aloud for children 7 and under. Ahwahnee Great Lounge Fireplace (DNC)</p> <p>Ranger Walk-Geology 1 1/2 hrs. Front of Yosemite Valley Visitor Center (NPS)</p> <p>Open House (November 30 only) Learn about park improvements. Yosemite Valley Visitor Center Auditorium (NPS)</p> <p>Evening Program 1 hr. Check local postings for venue and topic (DNC) &</p> <p>Winter Theater Live! (December 28 only) <i>The Spirit of John Muir: Stories of Ice and Snow</i> 1 hr. See details below \$ (DNC)</p> <p>Capacity Update (November 30 only) Public Meeting. Yosemite Valley Visitor Center Auditorium (NPS) &</p> <p>Evening Program Check local postings for venue and topic (DNC) &</p>	<p>9:00am Photography Walk 2+ hrs. Limited space advance sign-up required. Meet at The Ansel Adams Gallery, conditions permitting (AAG)</p> <p>10:30am Ranger Talk-Yosemite's First People 1/2 hr. Inside Yosemite Museum (NPS)</p> <p>1:00pm STORY TIME (December 29 only) 1/2 hr. Come hear Yosemite-related stories read aloud for children 7 and under. Ahwahnee Great Lounge Fireplace (DNC)</p> <p>2:00pm Ranger Walk-Yosemite's Legacy 1 1/2 hrs. Front of Yosemite Valley Visitor Center (NPS)</p> <p>7:00pm Evening Program 1 hr. Check local postings for venue and topic (DNC) &</p> <p>8:00pm Winter Theater Live! (December 29 only) <i>The Spirit of John Muir: Stories of Ice and Snow</i> 1 hr. See details below \$ (DNC)</p>	<p>10:30am Ranger Talk-Yosemite's First People 1/2 hr. Inside Yosemite Museum (NPS)</p> <p>11:00am STORY TIME (December 16 and 30 only) 1/2 hr. Come hear Yosemite-related stories read aloud for children 7 and under. Ahwahnee Great Lounge Fireplace (DNC)</p> <p>1:00pm STORY TIME (December 23 only) 1/2 hr. Come hear Yosemite-related stories read aloud for children 7 and under. Yosemite Lodge Cliff Room (DNC)</p> <p>2:00pm Ranger Walk-Wild about Wildlife 1 1/2 hrs. Front of Yosemite Valley Visitor Center (NPS)</p> <p>7:00 pm Evening Program 1 hr. Check local postings for venue and topic (DNC) &</p> <p>8:00pm Winter Theater Live! (December 23 only) <i>The Spirit of John Muir: Stories of Ice and Snow</i> 1 hr. See details below \$ (DNC)</p>	<p>9:00am Photography Walk 2+ hrs. Limited space advance sign-up required. Meet at The Ansel Adams Gallery, conditions permitting (AAG)</p> <p>WEE WILD ONES (December 3 only) 45 min. Stories and activities for kids 6 and under. Ahwahnee Great Lounge Fireplace (DNC)</p> <p>10:30am Ranger Talk-Yosemite's First People 1/2 hr. Inside Yosemite Museum (NPS)</p> <p>1:00pm FAMILY WINTER CELEBRATION (December 31 only) 3 hrs. See details below</p> <p>2:00pm Ranger Walk-Trees (except December 31) 1 1/2 hrs. Front of Yosemite Valley Visitor Center (NPS)</p> <p>3:00pm Fine Print Viewing 1 hr. Very limited space. Sign-up in advance. Meet in The Ansel Adams Gallery (AAG)</p> <p>4:00pm CHILDREN'S STORYTIME 1/2 hr. For children 7 and under. Gallery front porch. Children must be accompanied by an adult (AAG) &</p> <p>Winter Theater Live! (December 24 only) <i>The Spirit of John Muir: Stories of Ice and Snow</i> 1 hr. See details below \$ (DNC)</p> <p>7:00pm Evening Program (except December 24) 1 hr. Check local postings for venue and topic. (DNC) &</p> <p>8:00pm Winter Theater Live! (December 17 only) <i>The Spirit of John Muir: Stories of Ice and Snow</i> 1 hr. See details below \$ (DNC)</p>
<p>Ranger Snowshoe Walk (December 21 & 28 only) See details below (NPS) \$</p>	<p>10:30am Ranger Snowshoe Walk (December 22 & 29 only) 2 hrs. See details below (NPS) \$</p>	<p>10:30am Ranger Snowshoe Walk (December 23 & 30 only) 2 hrs. See details below (NPS) \$</p>	<p>10:30am Ranger Snowshoe Walk (December 24 & 31 only) 2 hrs. See details below (NPS) \$</p>

Wawona

Pioneer Yosemite History Center

Go back to a time of horse-drawn wagons, a covered bridge, and log cabins. A visit to the Pioneer Yosemite History Center explores Yosemite's history and explains how Yosemite was the inspiration for national parks across America and around the world. The center is always open, and interpretive signs and brochures are available. &

Holidays at Wawona Hotel

December 16 - January 2

Tree lighting, Santa, caroling, and ringing in the new year! Musician and historian Tom Bopp will be playing the piano and presenting programs on select evenings. Check at front desk for a schedule of events.

Badger Pass

Opens for season December 16, weather permitting

Badger Pass, California's oldest operating ski area, is the center of Yosemite ski and snowboarding activity during the winter. It is located at 7,200 feet in elevation and is a 1-hour drive from Yosemite Valley on the Glacier Point Road. There are 10 runs, 3 ski lifts, downhill and cross-country ski schools, ski rentals, and a day lodge. Cross-country skiers will find groomed and ungroomed trails that originate at Badger Pass; tracks are groomed on the Glacier Point Road all the way to Glacier Point. Wilderness permits available at the Badger Pass A-frame. Call 209/372-1000 for ski conditions.

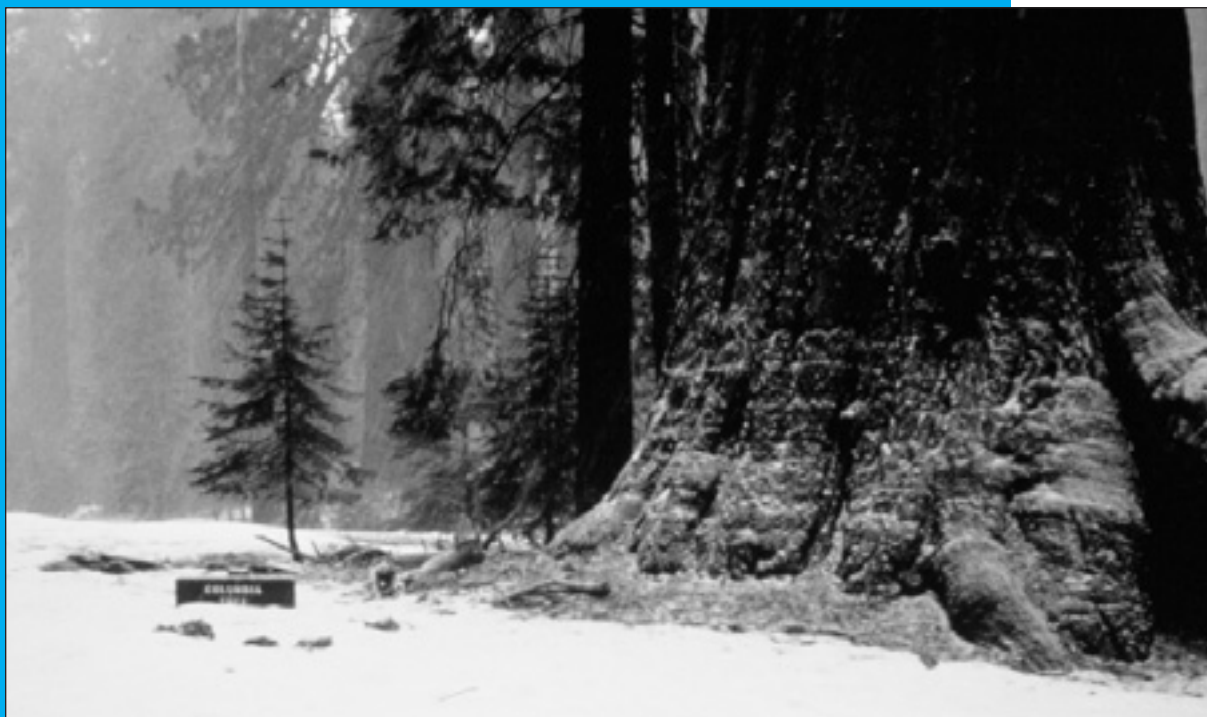
Badger Pass Bus

Ride the free bus to Badger Pass Ski Area (bus begins running when ski area opens for the season). Road and weather conditions permitting, the bus leaves daily from Curry Village at 8:00 a.m., and 10:30 a.m., Yosemite Village at 8:10 a.m. and 10:40 a.m., The Ahwahnee at 8:15 a.m. and 10:45 a.m., and Yosemite Lodge at the Falls at 8:30 a.m. and 11:00 a.m. Return buses leave Badger Pass at 2:00 pm and 4:00 p.m. Several buses operate on busy days. Allow at least one hour for a one-way trip. Additional information is available at hotel front desks.

Ranger Snowshoe Walk—Explore the Forest in Winter

Daily, 10:30 a.m.

2 hrs. Badger Pass A-frame. Wear warm clothing and boots for this moderate/strenuous walk. Snowshoes provided, although not recommended for children under 10 yrs. \$



Sequoia Groves in Winter

Mariposa Grove of
Giant Sequoias
NPS Photo

Mariposa Grove

The Mariposa Grove of Giant Sequoias, located at the southern-most end of Yosemite, is the largest stand of giant sequoias in the park (about 500 trees). Allow 1 1/4 hours driving time from Yosemite Valley. Cars are prohibited beyond the parking area; however, many giant sequoias can be seen from there. From the parking area, all trails in the Mariposa Grove of Giant Sequoias are uphill. The trailhead is located at the far end of the parking area. Interpretive signs between the trailhead and the California Tree provide a self-guiding tour. Written translations are available at the trailhead (German, French, Spanish, Japanese).

In winter, the access road to the Grove is closed due to snow. Once the access road is closed, add one to two hours for the 2-mile walk from the south entrance of the park to the Grove.

Merced Grove

Yosemite's quietest stand of sequoias is the Merced Grove, accessible only on foot. It's a 4-mile roundtrip hike or ski into the grove from the Big Oak Flat Road (Highway 120 West). Located 3.5 miles north of Crane Flat or 4.5 miles south of the Big Oak Flat entrance, the trailhead is marked by a post labeled B-10 and a road sign. Allow 3 hours for the roundtrip hike or ski to this group of about 20 sequoias.

Tuolumne Grove

The Tuolumne Grove of Giant Sequoias is near Crane Flat at the intersection of the Big Oak Flat Road and the Tioga Road. The former route of the Big Oak Flat Road leads downhill from Crane Flat into the Tuolumne Grove of Big Trees, a cluster of about 25 sequoias. Now closed to cars, this 2-mile roundtrip walk or ski has an elevation change of 500 feet (150 meters). It is relatively easy, though it is moderately strenuous on the uphill return. Once in the Tuolumne Grove there is an easy half-mile, self-guiding nature trail.

Yosemite Today

Published by the National Park Service, in cooperation with Delaware North Corporation Parks & Resorts at Yosemite.

Editor Victoria Mates
Design / Production Skip Gaynard Designs
Printing Casey Printing, Inc.

We're Interested . . .

We are always looking for ways to improve our visitor publications. You can help by sending your comments via e-mail to Victoria_Mates@nps.gov or fax to 209/372-0557.

Park Facilities and Services



ATM

Yosemite Village

South of Village Store (Bank of America)
Inside Village Store

Yosemite Lodge at the Falls

Inside main registration area

Curry Village

Inside gift/grocery store

Wawona

Inside Wawona Store

El Portal

On Highway 140 at the Yosemite View Lodge and
the El Portal Market.

Babysitting

Limited babysitting available for registered guests at
Yosemite Lodge and The Ahwahnee. Call front desk
or concierge for additional information.

Food & Beverage Service

These hours of operation are approximate.
Current hours of operation are posted at each front
desk or facility.

BADGER PASS

All facilities open December 16 weather permitting

Skiers Grill 8:30 a.m. to 4:00 p.m.

Snowflake Room

Friday - Sunday & holidays 10:00 a.m. to 4:30 p.m.

YOSEMITE VILLAGE

Degnan's Delicatessen
7:00 a.m. to 5:00 p.m.

YOSEMITE LODGE AT THE FALLS

Coffee Corner

6:30 a.m. to 1:00 p.m.

Food Court

Breakfast 6:30 a.m. to 11:00 a.m.

Lunch/Dinner 11:30 a.m. to 7:30 p.m.

Dec. 18 - Jan. 1 11:30 a.m. to 8:00 p.m.

Mountain Room Lounge

Monday - Friday 4:30 p.m. to 10:30 p.m.

Saturday - Sunday noon to 10:30 p.m.

Dec. 25 - Jan. 2 noon to 10:30 p.m.

New Year's Eve noon to 1:00 a.m.

Mountain Room Restaurant

Sunday - Thursday 5:00 p.m. to 8:30 p.m.

Friday - Saturday 5:00 p.m. to 9:00 p.m.

Christmas Day 4:00 p.m. to 9:00 p.m.

New Year's Eve 5:00 p.m. to 10:30 p.m.

THE AHWAHNEE

Dining Room

Breakfast 7:00 a.m. to 10:30 a.m.

Sunday Brunch 7:00 a.m. to 3:00 p.m.

Lunch 11:30 a.m. to 3:00 p.m.

Dinner 5:30 p.m. to 9:00 p.m.

December 15, 16, 18, 19, 21, 22, 24, & 26

Shortened lunch hours and no regular dinner service

Reservations and appropriate attire are

respectfully requested. 209/372-1489

The Ahwahnee Bar

11:00 a.m. to 11:00 p.m.

CURRY VILLAGE

Coffee Corner 7:00 a.m. to 11:00 a.m.

Open December 16 - January 2

Pizza Patio

December 16 - 18 5:00 p.m. to 9:00 p.m.

December 19 - January 1 noon to 9:00 p.m.

WAWONA HOTEL

Dining Room

Open December 16 - January 2

Breakfast 7:30 a.m. to 10:00 a.m.

Lunch 11:30 a.m. to 1:30 p.m.

Dinner 5:30 p.m. to 9:00 p.m.

Christmas Day noon to 9:00 p.m.

New Year's Eve Dinner Dance 9:00 p.m.

Reservations taken for 8 or more 209/375-1425

Gas Station

Wawona

9:00 a.m. to 6:00 p.m. Diesel & propane available.
Pay at the pump 24 hours with credit or debit card.

Crane Flat

Pay at the pump 24 hours with credit or debit card.

El Portal

8:00 a.m. to 5:00 p.m. Diesel available.

Pay at the pump 24 hours with credit or debit card.

Gifts, Books, & Apparel

YOSEMITE VILLAGE

The Ansel Adams Gallery

9:00 a.m. to 5:00 p.m.

Yosemite Bookstore

9:00 a.m. to 5:00 p.m. Inside Visitor Center

Yosemite Museum Store

9:00 a.m. to 4:00 p.m., closed for lunch

Closed Tuesday and Wednesday

Village Store 8:00 a.m. to 8:00 p.m.
Christmas Day 9:00 a.m. to 7:00 p.m.

Habitat Yosemite

Friday - Sunday 9:00 a.m. to 5:00 p.m.

Closed Christmas Day

Sport Shop 9:00 a.m. to 5:00 p.m.

Christmas Day 10:00 a.m. to 5:00 p.m.

BADGER PASS

Sport Shop 9:00 a.m. to 4:00 p.m.

YOSEMITE LODGE AT THE FALLS

Gift/Grocery 8:00 a.m. to 8:00 p.m.

Christmas Day 10:00 a.m. to 6:00 p.m.

Nature Shop 11:00 a.m. to 6:00 p.m.

THE AHWAHNEE

Gift Shop 8:00 a.m. to 10:00 p.m.

Sweet Shop 7:00 a.m. to 10:00 p.m.

CURRY VILLAGE

Mountain Shop 8:30 a.m. to 6:00 p.m.

Christmas Day 10:00 a.m. to 6:00 p.m.

Gift/Grocery 8:00 a.m. to 8:00 p.m.

Christmas Day 10:00 a.m. to 6:00 p.m.

WAWONA

Pioneer Gift Shop/Grocery

8:00 a.m. to 6:00 p.m.

Christmas Day 10:00 a.m. to 5:00 p.m.

Groceries

Yosemite Lodge at the Falls Gift/Grocery

8:00 a.m. to 8:00 p.m.

Christmas Day 10:00 a.m. to 6:00 p.m.

Village Store 8:00 a.m. to 8:00 p.m.

Christmas Day 9:00 a.m. to 7:00 p.m.

Degnan's Delicatessen 7:00 a.m. to 5:00 p.m.

Curry Village Gift/Grocery 8:00 a.m. to 8:00 p.m.

Christmas Day 10:00 a.m. to 6:00 p.m.

Wawona Grocery Store 8:00 a.m. to 6:00 p.m.

Christmas Day 10:00 a.m. to 5:00 p.m.

Crane Flat 9:00 a.m. to 5:00 p.m.

El Portal Market 9:00 a.m. to 7:00 p.m.

Closed on Christmas and New Year's Day

General Park Information

Emergency 911

Fire - Police - Medical Emergency:
Dial 911, 24 hours a day (from hotel room 9-911)

Information

Road and Weather

General Park Information

209/372-0200 www.nps.gov/yose

Campground Reservations

800/436-7275 reservations.nps.gov

Medical

Yosemite Medical Clinic

Emergency care: 24 hours daily
Drop-in and urgent care: 8:00 a.m. to 7:00 p.m.

Appointments

8:00 a.m. to 5:00 p.m. Monday - Friday

9:00 a.m. to noon Saturday

Located on Ahwahnee Drive in Yosemite Valley,
the clinic provides routine and emergency medical
care, 24-hour paramedic/ambulance services, lim-
ited pharmacy, lab, x-ray, physical therapy, and
Mountain Crisis Services for victims of domestic
violence. 209/372-4637

PAD Program

Yosemite's Public Access Defibrillation (PAD)
Program is designed to protect park visitors and
staff from sudden cardiac arrest. All automated
external defibrillator (AED) cabinets have been
placed in high-risk locations and are open and
accessible to anyone in the event of a medical
emergency. For more information about the PAD
Program, contact the Yosemite Medical Clinic.

AEDs can be found at the following locations:
Village Store (Yosemite Village), Yosemite Lodge
at the Falls, Curry Village Registration Desk, The
Ahwahnee, Crane Flat Store, Wawona Hotel, and
Badger Pass Lodge.

Dental Services

Adjacent to Medical Clinic. For hours, call
209/372-4200. If no answer, call 209/372-4637.

Showers & Laundromat

SHOWERS

Curry Village 24 hours

LAUNDROMAT

Housekeeping Camp 8:00 a.m. to 10:00 p.m.

Recycling

Village Store Recycling Center

Tuesday, Thursday and Saturday
noon to 4:00 p.m.

Post Offices

Main Post Office - Yosemite Village

Monday - Friday 8:30 a.m. to 5:00 p.m.

Saturday 10:00 a.m. to noon

Yosemite Lodge at the Falls Post Office

Monday - Friday 11:30 a.m. to 2:45 p.m.

Wawona Post Office

Monday - Friday 9:00 a.m. to 5:00 p.m.

Saturday 9:00 a.m. to 1:00 p.m.

El Portal Post Office

Monday - Friday 8:30 a.m. to 12:30 p.m.,

1:30 p.m. to 5:00 p.m.

Auto Service, Towing, and Repair (AAA)

Village Garage

8:00 a.m. to noon, 1:00 p.m. to 5:00 p.m.

Towing 24 hours. Propane available until 4:00 p.m.

209/372-8320

Service Organizations

Al-Anon

7:00 p.m. Wednesday

DNC General Office Building

(Executive Conference Room) Yosemite Village

Alcoholics Anonymous

7:30 p.m. Sunday, Tuesday, and Thursday

DNC General Office Building

(Employee Training Center) Yosemite Village

Lions Club

Meets first and third Thursdays of each month
at noon, The Ahwahnee.

Call 209/372-4475 for information.

Rotary International

Meets Thursdays for lunch at noon in
The Ahwahnee Mural Room. Visiting Rotarian
families and guests welcome. For meeting
reservations or information, call 209/372-1401.

Religious Services

YOSEMITE COMMUNITY CHURCH

(Nondenominational Christian)

Pastor Brent Moore 209/372-4831

Various Bible Studies during the week.

Counseling provided. Call pastor for appointment.

Worship Service

Yosemite Valley Chapel

Sunday 9:15 a.m. (Children's Church and
Nursery available)

Sunday 6:30 p.m. (no child care)

Thursday 7:00 p.m. (no child care)

Christmas Eve 7:00 p.m., Christmas Day 9:15 a.m.

New Year's Eve 10:30 p.m.

ROMAN CATHOLIC

Rev. Raymond J. Duffy 209/372-4729

Mass in Yosemite Valley

Yosemite Valley Visitor Center Theater

Sunday 10:00 a.m.

CHURCH OF CHRIST

Ron Skelton 209/379-2307

El Portal Chapel

Worship Service

Sunday 9:00 a.m.

CROSSWAY CHURCH (Christian Protestant)

Pastor Steve Hughes 209/379-2428

Wednesday 7:00 p.m. Girl's Club

EL PORTAL COMMUNITY CHURCH

Pastor Russ Marsh 209/379-2255

El Portal Chapel

Worship Service

Sunday 10:30 a.m.

Small Group Study Wednesday 6:30 p.m.

Recreation *Weather permitting

YOSEMITE MOUNTAINEERING SCHOOL AND GUIDE SERVICE

Yosemite Mountaineering School and Guide
Service offers lessons and guided climbing at all
levels, overnight backpacking, and guided day
hikes to spectacular areas of Yosemite Valley and
the high country.

Curry Village 209/372-8344

Closed for season.

Guides available, weather permitting.

Badger Pass 209/372-8344

8:30 a.m. to 4:30 p.m.

Located in cross-country ski area.

BADGER PASS SKI AREA

Opens for season December 16, conditions permitting.

Downhill ski area, rental shop, cross-country cen-
ter, ski school, snow tubing, snow lift operation:
9:00 a.m. to 4:00 p.m. Call 209/372-1000 for
conditions and information.

ICE SKATING RINK

Located at Curry Village, shuttle stops #13 and #21
209/372-8341

Monday - Friday

3:30 p.m. - 6:00 p.m. 7:00 p.m. - 9:30 p.m.

December 17 - January 2

Noon - 2:30 (in addition to above hours)

Saturday, Sunday, and holidays

8:30 a.m. - 11:00 a.m. Noon - 2:30 p.m.

3:30 p.m. - 6:00 p.m. 7:00 p.m. - 9:30 p.m.

Tours

Yosemite Lodge at the Falls Tour and Activity Desk

Sunday - Thursday 7:30 a.m. to 6:00 p.m.

Friday - Saturday 7:30 a.m. to 7:30 p.m.

SIGHTSEEING TOURS

Valley Floor Tour

This 26-mile, 2-hour tour departs
daily from Yosemite Lodge at the Falls in
Yosemite Valley. Contact the tour and
activity desk for times.