



Experience Your America

Yosemite Today

January 3 - January 30, 2006

Yosemite National Park

ROAD INFO

Due to construction, you may experience short delays or temporary detours on some park roads. Call 209/372-0200 for recorded road information.

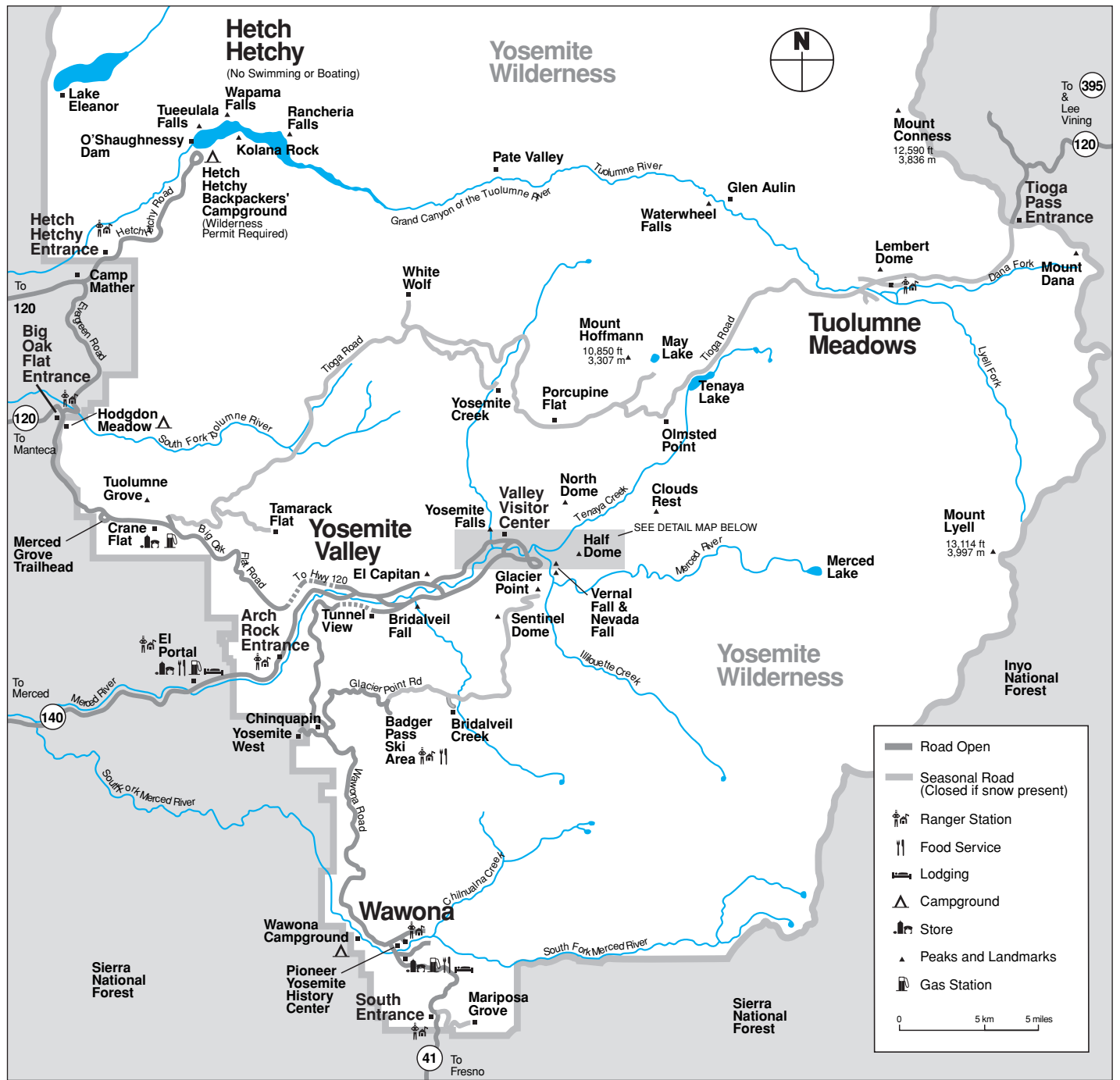
SPIRIT OF YOSEMITE



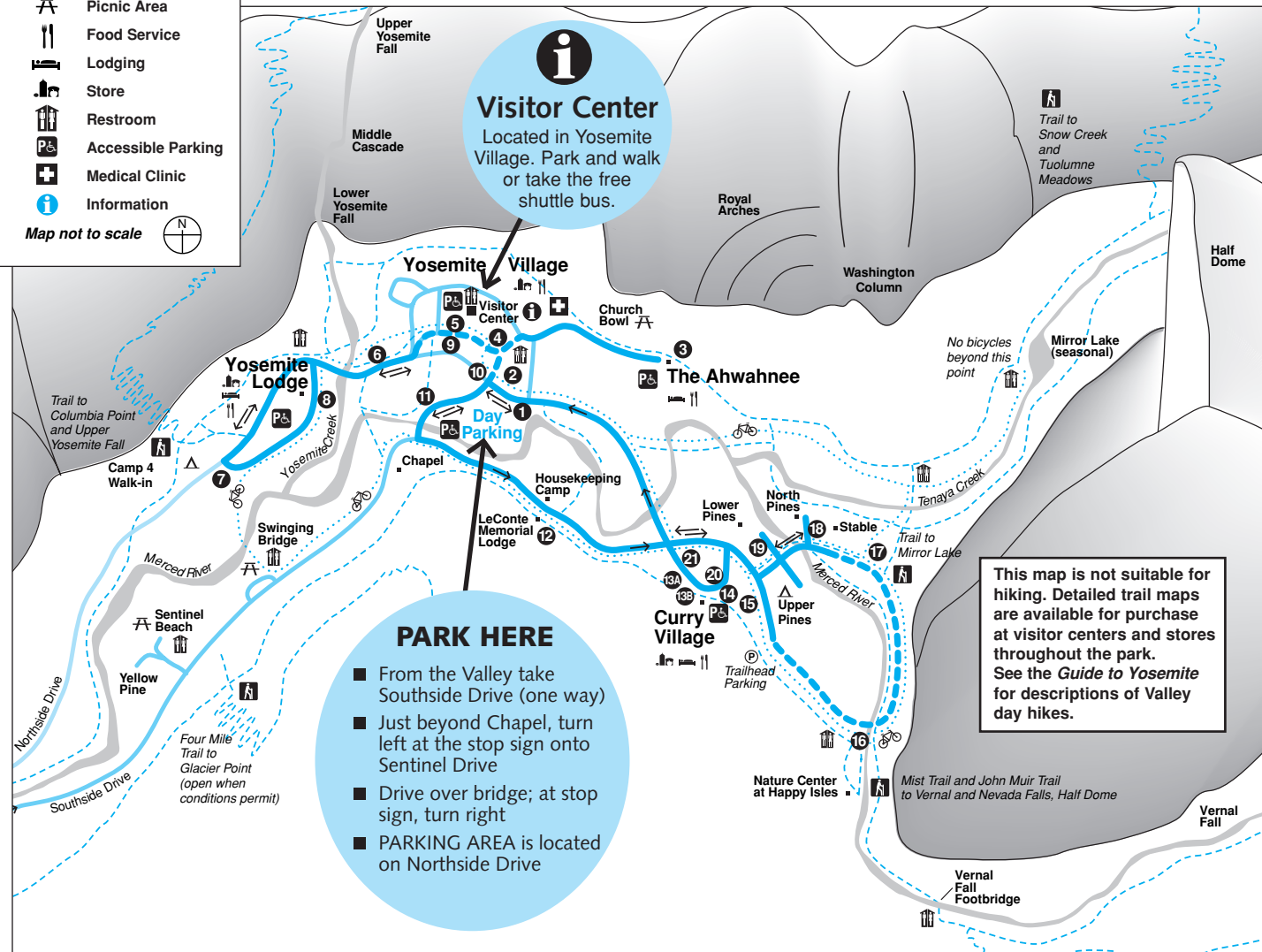
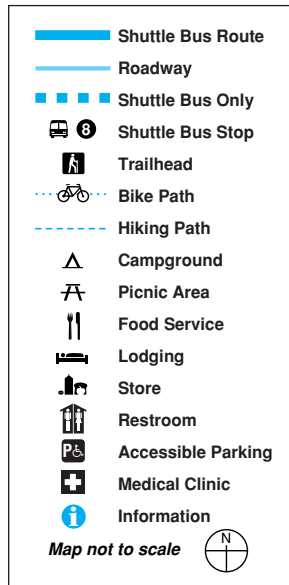
Don't miss this award-winning, state-of-the-art film! Shown every 30 minutes at the Yosemite Valley Visitor Center Theater, free of charge.

See map on front page for directions to Day Parking. Take shuttle to stop #5.

Pick up your free Yosemite Map and Guide at the Yosemite Valley Visitor Center.



Yosemite Valley Shuttle Bus Map



Ride the Free Yosemite Valley Shuttle Bus

Shuttle buses operate daily at 30-minute intervals. Times posted at each stop. All buses follow the same route, serving stops in numerical order.

SCHEDULE

7:00 a.m. - 10:00 p.m.

- 1 Yosemite Village / Day Parking
- 2 Yosemite Village
- 3 The Ahwahnee
- 4 Yosemite Village / Degnan's Complex
- 5 Visitor Center
- 6 Lower Yosemite Fall
- 7 Camp 4/Upper Yosemite Fall Trailhead
- 8 Yosemite Lodge
- 9 Visitor Center
- 10 Yosemite Village
- 11 Sentinel Bridge / Yosemite Chapel
- 12 Housekeeping Camp / LeConte Memorial Lodge
- 13A Curry Village Rental Center
- 13B Curry Village Registration Desk
- 14 Curry Village Parking
- 15 Upper Pines Campground
- 16 Happy Isles / John Muir Trailhead
Closed for season
- 17 Mirror Lake Junction
Closed for season
- 18 Stable
- 19 Lower Pines Campground
- 20 Curry Village Parking
- 21 Curry Village Rental Center

YOSEMITE AREA REGIONAL TRANSPORTATION SYSTEM



YARTS bus stops are located in Yosemite Valley at The Ahwahnee, Curry Village, Visitor Center and Yosemite Lodge at the Falls. For bus schedules to and from the Yosemite area, call 1-877-98-YARTS or visit YARTS online at www.yarts.com

Scheduled Events

Programs printed in color are especially for children and their families.

NPS = National Park Service
 DNC = Delaware North Companies at Yosemite
 AAG = The Ansel Adams Gallery
 \$ = Programs offered for a fee



Indicates facilities accessible for visitors in wheelchairs. Short steep inclines may be encountered.

	SUNDAY January 8, 15, 22 & 29	MONDAY January 9, 16, 23 & 30	TUESDAY January 3, 10, 17 & 24	WEDNESDAY January 4, 11, 18 & 25
Yosemite Valley	9:00am WEE WILD ONES 45 min. Stories and activities for kids 6 and under. Ahwahnee Great Lounge Fireplace (DNC) 10:30am Ranger Talk—Yosemite's First People ½ hr. Inside Yosemite Museum (NPS) ♿ 2:00pm Ranger Walk—Rivers and Waterfalls 1½ hrs. Front of Yosemite Valley Visitor Center (NPS) 7:00pm Film—Ansel Adams 1 hr. Check local postings for venue (AAG) ♿	10:30am Ranger Talk—Yosemite's First People ½ hr. Inside Yosemite Museum (NPS) ♿ 2:00pm Ranger Walk—A Changing Yosemite 1½ hrs. Front of Yosemite Valley Visitor Center (NPS) 7:00pm Evening Program 1 hr. Check local postings for venue and topic (DNC) ♿	9:00am Photography Walk 2 hrs. Limited space. Reservations required. Sign up/meet at The Ansel Adams Gallery conditions permitting (AAG) 10:30am Ranger Talk—Yosemite's First People ½ hr. Inside Yosemite Museum (NPS) ♿ Noon Yosemite Forum—The Search for Yosemite's Rare Plants (January 10 only) 1 hr. Yosemite Valley Visitor Center Auditorium (NPS) ♿ 2:00pm Ranger Walk—Bears 1½ hrs. Front of Yosemite Valley Visitor Center (NPS) 7:00pm Evening Program 1 hr. Check local postings for venue and topic (DNC) ♿	10:30am Ranger Talk—Yosemite's First People ½ hr. Inside Yosemite Museum (NPS) ♿ 2:00pm Ranger Walk—A Changing Yosemite 1½ hrs. Front of Yosemite Valley Visitor Center (NPS) 7:00pm Evening Program 1 hr. Check local postings for venue and topic (DNC) ♿
Badger Pass	10:30am Ranger Snowshoe Walk 2 hrs. Moderate/strenuous walk. See details below. Badger Pass A-frame (NPS) \$	10:30am Ranger Snowshoe Walk 2 hrs. Moderate/strenuous walk. See details below. Badger Pass A-frame (NPS) \$	10:30am Ranger Snowshoe Walk 2 hrs. Moderate/strenuous walk. See details below. Badger Pass A-frame (NPS) \$ 6:30pm Full Moon Snowshoe Walk (January 10 only) 2 hrs. No experience required. See details below. Advance sign-up at any tour desk. Badger Pass Lodge (DNC) \$	10:30am Ranger Snowshoe Walk 2 hrs. Moderate/strenuous walk. See details below. Badger Pass A-frame (NPS) \$ 6:30pm Full Moon Snowshoe Walk (January 10 only) 2 hrs. No experience required. See details below. Advance sign-up at any tour desk. Badger Pass Lodge (DNC) \$

Yosemite Valley



Experience Your America PHOTOGRAPHY EXHIBIT BY STAN JORSTAD

Come to the Yosemite Museum Gallery and enjoy panoramic photography by Stan Jorstad. This collection includes one photograph from each of fifty-eight different national parks. The exhibit will be open daily.

Visitor Center and Bookstore

Open 9:00 a.m. to 5:00 p.m. Located in Yosemite Village just west of the main post office (shuttle stops #5 and #9). Information, maps, books, exhibits, bear canister rental and self-registration for wilderness permits. ♿ TTY

FILM

Spirit of Yosemite

This inspiring state-of-the-art visitor orientation film provides a stunning overview of Yosemite's splendor. It is shown every 30 minutes from Monday to Saturday 9:30 a.m. to 4:30 p.m., and Sunday noon to 4:30 p.m. in the Yosemite Valley Visitor Center Theater. Closed captioning available. ♿ CC

Yosemite Museum

Located in Yosemite Village next to the Yosemite Valley Visitor Center. ♿

FEATURES

Museum Gallery

Open 9:00 a.m. to 4:00 p.m. (closed for lunch). *Experience Your America* photography exhibit will be displayed, featuring panoramic images of national parks by photographer Stan Jorstad.

Indian Cultural Exhibit

Open 9:00 a.m. to 4:00 p.m. (closed for lunch). Displays interpret the cultural history of Yosemite's native Miwuk and Paiute people from 1850 to the present. Demonstrations of traditional skills are presented. No food or drink permitted.

Yosemite Museum Store

Open Friday through Sunday 9:30 a.m. to 4:00 p.m. (closed for lunch). Offering traditional American Indian arts and crafts and books on related subjects.

The Indian Village of Ahwahnee

Located behind the Yosemite Museum and open during daylight hours. Occasionally, Indian Cultural Program staff provide demonstrations or programs about Ahwahneechee skills and culture. ♿

Yosemite Cemetery

This historic cemetery is located across the street and just west of the Yosemite Museum. People buried here include American Indians and others who played an important role in the development of what is now Yosemite National Park. A *Guide to the Yosemite Cemetery* is available at the Yosemite Valley Visitor Center.

The Ansel Adams Gallery

Located in Yosemite Village next to the Yosemite Valley Visitor Center. Open daily from 9:00 a.m. to 5:00 p.m. The Gallery offers the work of Ansel Adams, contemporary photographers and other fine artists. In addition, a wide selection of handcrafts, books, gifts, digital services and photography supplies are offered. Scheduled activities are listed on the front porch of the Gallery. For more information, call 209-372-4413 or visit www.anseladams.com.

GALLERY EXHIBIT

On display January 5 through February 27, black and white photography by Tom Mallonee and Kerik Kouklis.

YOSEMITE OUTDOOR ADVENTURES

Yosemite Association Special Programs

Winter Ecology with Roger McGeehee
 JANUARY 13 - 17

Introduction to Winter Camping
 with Eryn Bordes and Dave Jaffe
 JANUARY 21 - 22

Winter Landscape Photography
 with John Senser
 JANUARY 26 - 29

Call The Yosemite Association at 209/379-2321
 for details, or visit www.yosemite.org,
 or check at the Visitor Center

January 3 - January 30, 2006

WEDNESDAY January 4, 11, 18 & 25	THURSDAY January 5, 12, 19 & 26	FRIDAY January 6, 13, 20 & 27	SATURDAY January 7, 14, 21 & 28
<p>Ranger Talk–Yosemite's First People Inside Yosemite Museum (NPS) ♿</p> <p>Ranger Walk–Geology S. Front of Yosemite Valley Visitor Center (NPS)</p> <p>Open House (January 25 only) Learn about park improvements at Yosemite Valley Visitor Center Auditorium ♿</p> <p>Evening Program Check local postings for venue and topic (DNC) ♿</p>	<p>9:00am Photography Walk 2 hrs. Limited space. Reservations required. Sign up/meet at The Ansel Adams Gallery conditions permitting (AAG)</p> <p>10:30am Ranger Talk–Yosemite's First People ½ hr. Inside Yosemite Museum (NPS) ♿</p> <p>2:00pm Ranger Walk–Yosemite's Legacy 1½ hrs. Front of Yosemite Valley Visitor Center (NPS)</p> <p>7:00pm Evening Program 1 hr. Check local postings for venue and topic (DNC) ♿</p>	<p>9:00am WEE WILD ONES 45 min. Stories and activities for kids 6 and under. Ahwahnee Great Lounge Fireplace (DNC)</p> <p>10:30am Ranger Talk–Yosemite's First People ½ hr. Inside Yosemite Museum (NPS) ♿</p> <p>2:00pm Ranger Walk–Wild about Wildlife 1½ hrs. Front of Yosemite Valley Visitor Center (NPS)</p> <p>7:00pm Evening Program 1 hr. Check local postings for venue and topic (DNC) ♿</p>	<p>9:00am Photography Walk 2 hrs. Limited space. Reservations required. Sign up/meet at The Ansel Adams Gallery conditions permitting (AAG)</p> <p>10:30am Ranger Talk–Yosemite's First People ½ hr. Inside Yosemite Museum (NPS) ♿</p> <p>11:00am STORY TIME (January 14 only) 30 min. Yosemite-related stories read aloud for children 7 & under. Ahwahnee Great Lounge Fireplace (DNC)</p> <p>2:00pm Ranger Walk–Trees 1½ hrs. Front of Yosemite Valley Visitor Center (NPS)</p> <p>3:00pm Fine Print Viewing 1 hr. Very limited space. Sign-up in advance. Meet in The Ansel Adams Gallery (AAG) WINTER FAMILY WALK (January 14 only) 1 hr. Easy discover stroll for families. Meet near Ahwahnee Concierge desk (DNC)</p> <p>4:00pm CHILDREN'S STORYTIME ½ hr. For children 7 and under. Children must be accompanied by an adult. Meet above Degnan's at the Loft (AAG) ♿</p> <p>7:00pm Evening Program 1 hr. Check local postings for venue and topic (DNC) ♿</p>
<p>Ranger Snowshoe Walk Moderate/strenuous walk. See details below. Badger Pass A-frame (NPS) \$</p> <p>Full Moon Snowshoe Walk (January 11 only) 2 hrs. No experience required. See details below. Advance sign-up at any tour desk. Badger Pass Lodge (DNC) \$</p>	<p>10:30am Ranger Snowshoe Walk 2 hrs. Moderate/strenuous walk. See details below. Badger Pass A-frame (NPS) \$</p> <p>6:30pm Full Moon Snowshoe Walk (January 12 only) 2 hrs. No experience required. See details below. Advance sign-up at any tour desk. Badger Pass Lodge (DNC) \$</p>	<p>10:30am Ranger Snowshoe Walk 2 hrs. Moderate/strenuous walk. See details below. Badger Pass A-frame (NPS) \$</p> <p>6:30pm Full Moon Snowshoe Walk (January 13 only) 2 hrs. No experience required. See details below. Advance sign-up at any tour desk. Badger Pass Lodge (DNC) \$</p>	<p>10:30am Ranger Snowshoe Walk 2 hrs. Moderate/strenuous walk. See details below. Badger Pass A-frame (NPS) \$</p> <p>6:30pm Full Moon Snowshoe Walk (January 14 only) 2 hrs. No experience required. See details below. Advance sign-up at any tour desk. Badger Pass Lodge (DNC) \$</p>

Wawona

Pioneer Yosemite History Center

Go back to a time of horse-drawn wagons, a covered bridge, and log cabins. A visit to the Pioneer Yosemite History Center explores Yosemite's history and explains how Yosemite was the inspiration for national parks across America and around the world. The center is always open, and interpretive signs and brochures are available. ♿

Badger Pass

Badger Pass Ski Area

Badger Pass, California's oldest operating ski area, is the center of Yosemite ski and snowboarding activity during the winter. It is located at 7,200 feet in elevation and is a 1-hour drive from Yosemite Valley on the Glacier Point Road. There are 10 runs, 3 ski lifts, downhill and cross-country ski schools, ski rentals, and a day lodge. Cross-country skiers will find groomed and ungroomed trails that originate at Badger Pass; tracks are groomed on the Glacier Point Road all the way to Glacier Point. Wilderness permits available at the Badger Pass A-frame. Call 209/372-1000 for ski conditions.

Badger Pass Bus

Ride the free bus to Badger Pass Ski Area. Road and weather conditions permitting, the bus leaves daily from Curry Village at 8:00 a.m. and 10:30 a.m., Yosemite Village at 8:10 a.m. and 10:40 a.m., The Ahwahnee at 8:15 a.m. and 10:45 a.m., and Yosemite Lodge at the Falls at 8:30 a.m. and 11:00 a.m. Return buses leave Badger Pass at 2:00 pm and 4:00 p.m. Several buses operate on busy days. Allow at least one hour for a one-way trip. Additional information is available at hotel front desks.

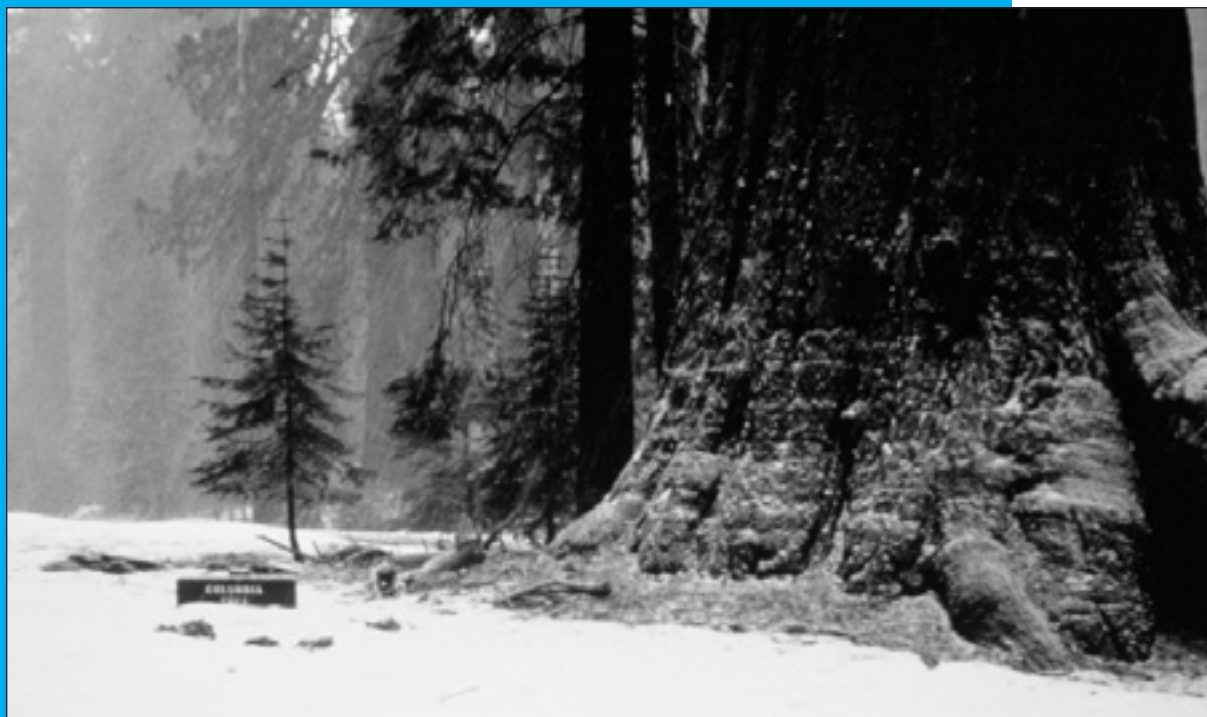
Ranger Snowshoe Walk— Explore the Forest in Winter Daily, 10:30 a.m.

2 hrs. Badger Pass A-frame. Wear warm clothing and boots for this moderate/strenuous walk. Snowshoes provided, although not recommended for children under 10 yrs. \$

Full Moon Snowshoe Walks January 10-14, 6:30 p.m.

Join an interpreter for a 2-3 mile walk in a moonlit winter wonderland. Watch the moon rise over majestic firs at Badger Pass. No experience necessary; however, this program is not recommended for children under 10 as it is moderately strenuous. Visit a tour desk, Badger Pass Lodge, or call 209/372-1240 or 559/252-4848 for required advance reservations. Tickets are \$14.75 (snowshoes included), or \$5 (bring your own snowshoes).

Note: Ranger and Full Moon Snowshoe walks will be canceled if the Badger Pass Road closes, or if weather conditions are too severe.



Sequoia Groves in Winter

*Mariposa Grove of
Giant Sequoias
NPS Photo*

Mariposa Grove

The Mariposa Grove of Giant Sequoias, located at the southern-most end of Yosemite, is the largest stand of giant sequoias in the park (about 500 trees). Allow 1¼ hours driving time from Yosemite Valley. Cars are prohibited beyond the parking area; however, many giant sequoias can be seen from there. From the parking area, all trails in the Mariposa Grove of Giant Sequoias are uphill. The trailhead is located at the far end of the parking area. Interpretive signs between the trailhead and the California Tree provide a self-guiding tour. Written translations are available at the trailhead (German, French, Spanish, Japanese).

In winter, the access road to the Grove is closed due to snow. Once the access road is closed, add one to two hours for the 2-mile walk from the south entrance of the park to the Grove.

Merced Grove

Yosemite's quietest stand of sequoias is the Merced Grove, accessible only on foot. It's a 4-mile roundtrip hike or ski into the grove from the Big Oak Flat Road (Highway 120 West). Located 3.5 miles north of Crane Flat or 4.5 miles south of the Big Oak Flat entrance, the trailhead is marked by a post labeled B-10 and a road sign. Allow 3 hours for the roundtrip hike or ski to this group of about 20 sequoias.

Tuolumne Grove

The Tuolumne Grove of Giant Sequoias is near Crane Flat at the intersection of the Big Oak Flat Road and the Tioga Road. The former route of the Big Oak Flat Road leads downhill from Crane Flat into the Tuolumne Grove of Big Trees, a cluster of about 25 sequoias. Now closed to cars, this 2-mile roundtrip walk or ski has an elevation change of 500 feet (150 meters). It is relatively easy, though it is moderately strenuous on the uphill return. Once in the Tuolumne Grove there is an easy half-mile, self-guiding nature trail.

Yosemite Today

Published by the National Park Service, in cooperation with Delaware North Corporation Parks & Resorts at Yosemite.

Editor Andy Fristensky
Design / Production Skip Gaynard Designs
Printing Casey Printing, Inc.

We're Interested . . .

We are always looking for ways to improve our visitor publications. You can help by sending your comments via e-mail to Andy_Fristensky@nps.gov or fax to 209/372-0617.

