



Experience Your America

Yosemite Today

March 29 - May 2, 2006

Yosemite National Park

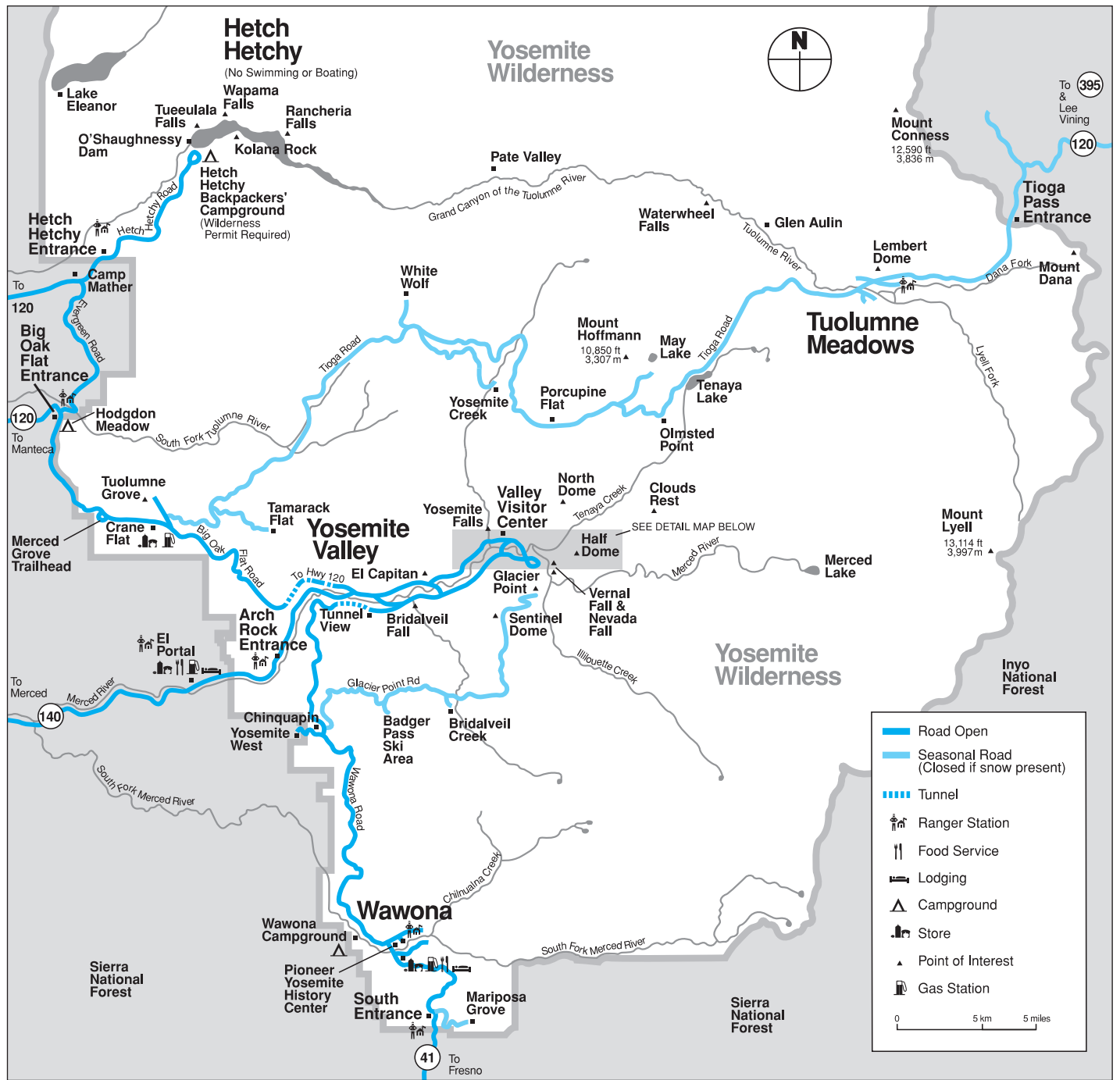
ROAD INFO

Construction may cause short delays or detours on some park roads. Call 209/372-0200 for recorded road information.

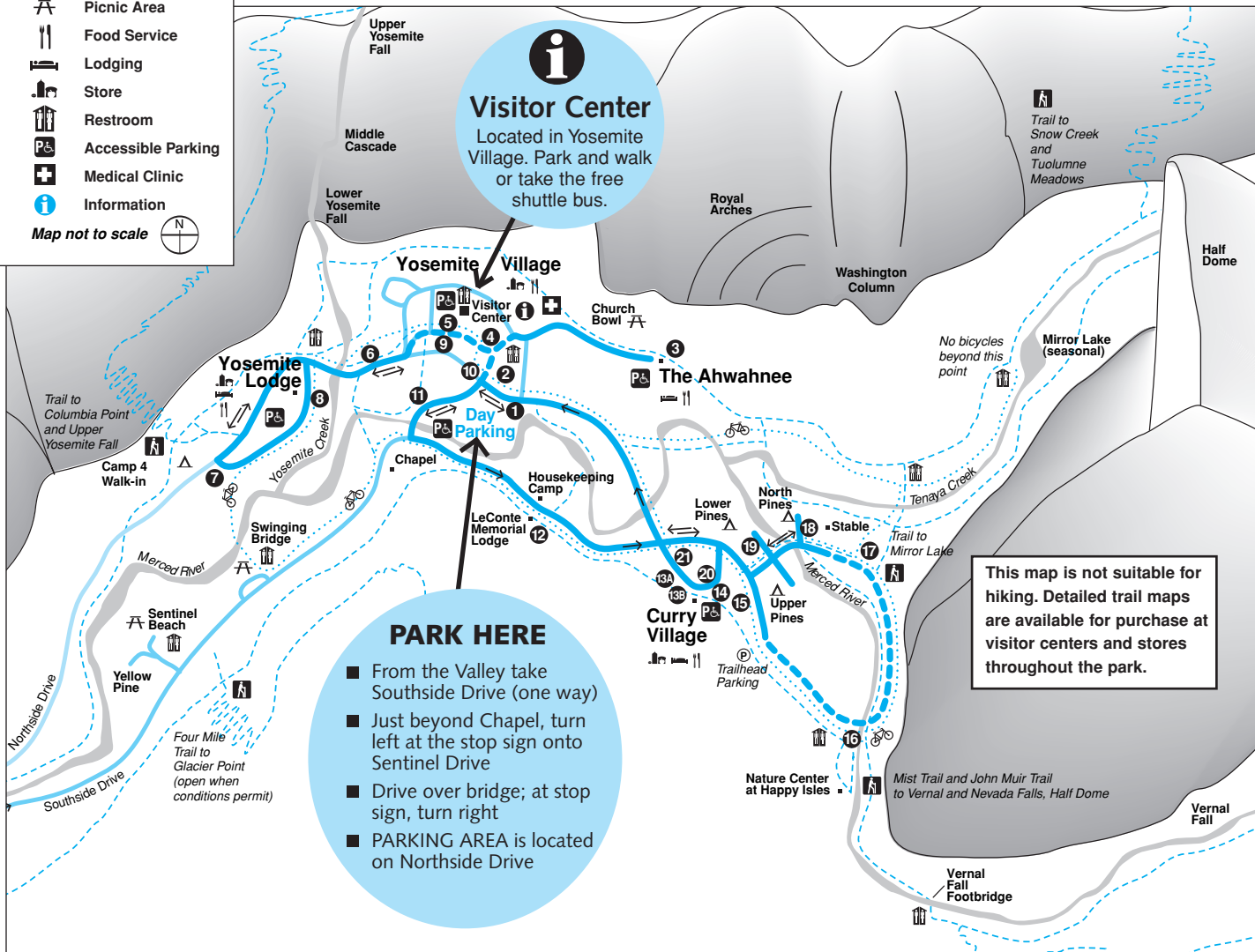
SPIRIT OF YOSEMITE



Don't miss this award-winning film! Shown free of charge every 30 minutes at the Yosemite Valley Visitor Center Theater. See map below.



Yosemite Valley Shuttle Bus Map



PARK HERE
From the Valley take Southside Drive (one way)
Just beyond Chapel, turn left at the stop sign onto Sentinel Drive
Drive over bridge; at stop sign, turn right
PARKING AREA is located on Northside Drive



Ride the Free Yosemite Valley Shuttle Bus

Shuttle buses operate daily at 10-minute intervals. Times are posted at each stop. All buses follow the same route, serving stops in numerical order.

SCHEDULE
7:00 a.m. - 10:00 p.m.

- 1 Yosemite Village / Day Parking
- 2 Yosemite Village
- 3 The Ahwahnee
- 4 Yosemite Village / Degnan's Complex
- 5 Valley Visitor Center
- 6 Lower Yosemite Fall
- 7 Camp 4/Upper Yosemite Fall Trailhead
- 8 Yosemite Lodge
- 9 Valley Visitor Center
- 10 Yosemite Village
- 11 Sentinel Bridge / Yosemite Chapel
- 12 Housekeeping Camp / LeConte Memorial Lodge
- 13A Curry Village Rental Center
- 13B Curry Village Registration Desk
- 14 Curry Village Parking
- 15 Upper Pines Campground*
- 16 Happy Isles / John Muir Trailhead*
- 17 Mirror Lake Junction*
- 18 Stable*
- 19 Lower Pines Campground
- 20 Curry Village Parking
- 21 Curry Village Rental Center

*Service begins March 31, conditions permitting. No service after dark.

YOSEMITE AREA REGIONAL TRANSPORTATION SYSTEM



YARTS bus stops are located in Yosemite Valley at The Ahwahnee, Curry Village, Valley Visitor Center, and Yosemite Lodge at the Falls. For bus schedules to and from the Yosemite area, call 1-877-98-YARTS, or visit YARTS online at www.yarts.com.

Scheduled Events

Programs printed in color are especially for children and their families.

NPS = National Park Service

DNC = DNC Parks & Resorts at Yosemite, Inc.

AAG = The Ansel Adams Gallery

AAC = American Alpine Club

S = Programs offered for a fee



Indicates facilities accessible to visitors in wheelchairs. Short, steep inclines may be encountered.

Yosemite Valley

SUNDAY

- 9:00am **WEE WILD ONES** (except April 9 and 16)
45 min.
Stories and activities for kids 6 and under Ahwahnee Great Lounge Fireplace (DNC) &
- 2:00pm **Ranger Walk—Writing on the Wind**
1 1/2 hrs.
Join in to experience collective poetic creation. Front of Valley Visitor Center (NPS)
- 8:00pm **Film - Ansel Adams**
1 hr.
Check local postings for venue (AAG) &

MONDAY

- 8:30am **Morning Photo Walk**
(begins April 17)
2 hrs.
Sign up/meet at The Ahwahnee front desk (DNC)
- 2:00pm **Ranger Walk—Rivers and Waterfalls**
1 1/2 hrs.
Front of Valley Visitor Center (NPS)
- 8:00pm **Evening Program**
1 hr.
Check local postings for venue and topic (DNC/NPS) &

TUESDAY

- 9:00am **Photography Walk**
2 hrs.
Limited space. Reservations required
Sign up/meet at The Ansel Adams Gallery
Conditions permitting (AAG)
- Noon **Yosemite Forum—Experiencing Their America: Findings from the 2005 Yosemite Visitor Use Study**
(April 11 only)
1 hr.
Valley Visitor Center Auditorium (NPS) &
- 2:00pm **Ranger Walk—Bears**
1 1/2 hrs.
Front of Valley Visitor Center (NPS)
- 8:00pm **Evening Program**
1 hr.
Check local postings for venue and topic (DNC/NPS) &

WEDNESDAY

- 9:00am **WEE WILD ONES**
45 min.
Stories and activities for kids 6 and under Ahwahnee Great Lounge Fireplace (DNC) &
- 2:00pm **Ranger Walk—Writing on the Wind**
1 1/2 hrs.
Join in to experience collective poetic creation. Front of Valley Visitor Center (NPS)
- 5:30pm **Spring**
1 hr.
The Ahwahnee
- 8:00pm **Evening Program**
1 hr.
Check local postings for venue and topic (DNC/NPS) &

Yosemite Valley



Yosemite Renaissance

ANNUAL ART COMPETITION PRIZEWINNERS

Contemporary fine-art interpretations of the human and natural landscape of Yosemite and the Sierra Nevada are featured in this competitive exhibition sponsored for 21 years by Yosemite Renaissance, a nonprofit organization supporting the arts of Yosemite.

Exhibit: Through May 7
Friday - Monday 10:00 a.m. to noon and 1:00 p.m. to 4:00 p.m.

Left: Oak, Pine, Rock 2005. Photo by Vaughn Hutchins

Valley Visitor Center and Bookstore

Open 9:00 a.m. to 5:00 p.m. and located in Yosemite Village just west of the main post office (shuttle stops #5 and #9), the visitor center offers information, maps, books, exhibits, bear canister rental and self-registration for wilderness permits. & TTY

FILM

Spirit of Yosemite

This inspiring visitor-orientation film provides a stunning overview of Yosemite's splendor. It is shown every 30 minutes from Monday through Saturday 9:30 a.m. to 4:30 p.m., and Sunday noon to 4:30 p.m. in the Valley Visitor Center Theater. & CC

Yosemite Museum

Located in Yosemite Village next to the Valley Visitor Center, the museum has a gallery, the Indian Cultural Exhibit, and a store. &

FEATURES

Museum Gallery

Open Friday through Monday 10:00 a.m. to noon and 1:00 p.m. to 4:00 p.m., the gallery offers a variety of exhibits (see left).

Indian Cultural Exhibit

Open 9:00 a.m. to 4:00 p.m. (closed for lunch), the exhibit displays interpret the cultural history of Yosemite's native Miwok and Paiute people from 1850 to the present. Demonstrations of traditional skills are presented. No food or drink permitted.

Yosemite Museum Store

Open Thursday through Monday 9:30 a.m. to 4:30 p.m. The store offers traditional American Indian arts and crafts and books on related subjects.

The Indian Village of Ahwahnee

Located behind the Yosemite Museum and open during daylight hours, the village offers exhibits on Ahwahneechee life. Occasionally, Indian Cultural Program staff provide demonstrations or programs about Ahwahneechee skills and culture. &

Yosemite Cemetery

This historic cemetery is located across the street and just west of the Yosemite Museum. People buried here include American Indians and others who played an important role in the development of what is now Yosemite National Park. *Guide to the Yosemite Cemetery* is available at the Valley Visitor Center.

The Ansel Adams Gallery

Located in Yosemite Village next to the Valley Visitor Center and open daily from 9:00 a.m. to 5:00 p.m., the gallery offers the work of Ansel Adams, contemporary photographers, and other fine artists. In addition, a wide selection of handcrafts, books, gifts, digital services, and photography supplies are offered. Scheduled activities are listed on the front porch of the gallery. For more information, call 209/372-4413, or visit www.anseladams.com.

GALLERY EXHIBIT

On display through Apr. 24: Carol Henry. Henry composes her arrangements of wildflowers, words, and other items on a glass plate within an enlarger, then exposes light through the arrangement directly onto Ilfochrome photographic paper. On display April 26 through June 11: Robert Turner. Turner devotes all of his artistic efforts to larger format, fine-art wildlands photography acclaimed for capturing a sense of place.

Free Art Classes

The Yosemite Art Center offers free classes in various art media to adults and highly interested teens Monday through Saturday from 10 a.m. to 2 p.m. Classes are held outside, weather permitting. Sign up in advance at the Yosemite Art Center, next to the Village Store.



April 10 - 15
Carolyn Fitz / Pen and Ink

April 17 - 22
Donna Naes
Travel Journaling
Sketching and Drawing

April 24 - 29
Patrick Duffy* / Watercolor

May 1 - 6
Bob Chapla / Watercolor

*new artist

NATIONAL PARK WEEK



Special Evening Programs
April 22 - 30

National Park Service areas protect amazing natural wonders and tell America's greatest stories. Join us in a celebration of this heritage during National Park Week.

For program information, check local postings.

Test your national park knowledge:

What is the largest national park in the United States?
Wrangell-St. Elias National Park & Preserve in Alaska, with 13.2 million acres

What is the oldest U.S. national park?
Established in 1872, Yellowstone is often called the world's oldest national park, but the area now named Hot Springs National Park was set aside 40 years earlier.

What features sparked the designation of Yosemite as a national park?
The U.S. government granted Yosemite Valley and the Mariposa Grove to the state of California in 1864 as a preserve "inalienable for all time." The surrounding spectacular lands become a national park in 1890.

Celebrate Earth Day

Special Programs & Clean-up Projects in Yosemite Valley

APRIL 21 Evening • APRIL 22 All Day

For more information see schedule above and local postings.

WEDNESDAY

WILD ONES
 and activities for kids 6 and under
 Ahwahnee Great Lounge Fireplace (DNC) &
Ranger Walk—Geology
 Front of Valley Visitor Center (NPS)
Open House
 (26 only)
 and learn about park improvement
 Valley Visitor Center Auditorium
Spring Twilight Stroll
 Ahwahnee back lawn (DNC)
Evening Program
 Check local postings for venue and topic
 (DNC/NPS) &

THURSDAY

9:00am **Photography Walk**
 2 hrs.
 Limited space. Reservations required
 Sign up/meet at The Ansel Adams Gallery
 Conditions permitting (AAG)
 2:00pm **Ranger Walk—Yosemite's Legacy**
 1 1/2 hrs.
 Front of Valley Visitor Center (NPS)
 8:00pm **Evening Program**
 1 hr.
 Check local postings for venue and topic
 (DNC/NPS) &

FRIDAY

2:00pm **Ranger Walk—Wild about Wildlife**
 1 1/2 hrs.
 Front of Valley Visitor Center (NPS)
 5:15pm **EARTH DAY EVE KIDS CRAFT**
 (April 21 only)
 1 1/4 hrs.
 Join park staff to make wearable Earth Day
 items. Yosemite Lodge Amphitheater (DNC)
 7:00pm **EARTH DAY EVE FAMILY PROGRAM**
 (April 21 only)
 1 1/4 hrs.
 Live music and activities
 Yosemite Lodge Amphitheater (DNC)
 8:00pm **Evening Program**
 (except April 21)
 1 hr.
 Check local postings for venue and topic
 (DNC/NPS) &

SATURDAY

9:00am **Photography Walk**
 2 hrs. Limited space. Reservations required
 Sign up/meet at The Ansel Adams Gallery
 Conditions permitting (AAG)
 2:00pm **Ranger Walk—Trees**
 1 1/2 hrs. Ahwahnee shuttle stop #3 (NPS)
 3:00pm **Fine Print Viewing**
 1 hr. Very limited space. Sign up in advance
 Inside The Ansel Adams Gallery (AAG)
 4:00pm **CHILDREN'S STORYTIME**
 1/2 hr. For children 7 and under (must be
 accompanied by an adult). Front of The
 Ansel Adams Gallery. Above Degnan's Loft
 in rainy weather (AAG) &
 5:30pm **Spring Twilight Stroll**
 (except April 8 and April 22)
 1 hr. The Ahwahnee back lawn (DNC)
Poetry and Parks: A Walk and Reading
 (April 22 only)
 1 1/2 hrs. The Ahwahnee back lawn (NPS)
 6:00pm **Film: Monumental**
 and (April 29 only) 80 min. Award-winning
 7:30pm documentary of David Brower's life
 Valley Visitor Center Theater (AAC) &
 8:00pm **Evening Program**
 (except April 22 and April 29)
 1 hr. Check local postings for venue and
 topic. (DNC/NPS) &
Earth Day Theater Presentation:
The Spirit of John Muir
 (April 22 only)
 1 hr. Valley Visitor Center Theater (DNC) &

Wawona

Pioneer Yosemite History Center

Go back to a time of horse-drawn wagons, a covered bridge, and log cabins. Visit the Pioneer Yosemite History Center, explore Yosemite's history, and learn how Yosemite was the inspiration for national parks across America and around the world. The center is always open, and interpretive signs and brochures are available. &

Badger Pass

Badger Pass Ski Area

Closes for the season April 2

Badger Pass, California's oldest operating ski area, is the center of Yosemite ski and snowboarding activity during the winter. It is located at 7,200 feet of elevation and is a 1-hour drive from Yosemite Valley on the Glacier Point Road. There are 10 runs, 3 ski lifts, downhill and cross-country ski schools, ski rentals, and a day lodge. Cross-country skiers will find groomed and ungroomed trails that originate at Badger Pass; tracks are groomed on the Glacier Point Road all the way to Glacier Point. Wilderness permits are available at the Badger Pass A-frame. Call 209/372-1000 for ski conditions.

Badger Pass Bus

Ends for the season April 2

Ride the free bus to Badger Pass Ski Area. Road and weather conditions permitting, the bus leaves daily from Curry Village at 8:00 a.m. and 10:30 a.m., Yosemite Village at 8:10 a.m. and 10:40 a.m., The Ahwahnee at 8:15 a.m. and 10:45 a.m., and Yosemite Lodge at the Falls at 8:30 a.m. and 11:00 a.m. Return buses leave Badger Pass at 2:00 p.m. and 4:00 p.m. Several buses operate on busy days. Allow at least one hour for a one-way trip. Additional information is available at hotel front desks.

Yosemite Outdoor Adventures

These programs are offered for a fee.

Spring Wildflowers of the Merced Canyon **APRIL 1**
 with Michael Ross

Hite's Cove Wildflower Photography **APRIL 8**
 with John Senser

'Leave No Trace' Trainer Certification **APRIL 7-8**
 with Pete Devine

To the Top of Yosemite Falls **APRIL 15**
 with Julie Miller

For details, call the Yosemite Association at 209/379-2321, or visit www.yosemite.org, or check at the Valley Visitor Center.

Yosemite's Giant Sequoias

Mariposa Grove

Located at Yosemite's southernmost end, the Mariposa Grove is the park's largest stand of giant sequoias, with about 500 trees. Allow 1 1/2 hours driving time from Yosemite Valley to reach the grove. A few giant sequoias are visible from the parking area. Trails into the grove extend uphill from the far end of the parking lot, and interpretive signs between the trailhead and the California Tree offer a self-guiding tour. Written translations in German, French, Spanish, and Japanese are available at the trailhead.

The access road to the grove closes during the winter. If the road is closed, the four-mile roundtrip walk from Yosemite's south entrance to the grove takes two to three hours (longer for hikes into the grove).

Trailers are prohibited on the Mariposa Grove Road. Private vehicles longer than 23 feet may not use this road during the hours of shuttle operation (see below).

FREE MARIPOSA GROVE & WAWONA SHUTTLE BUS

Weekends beginning April 22, conditions permitting

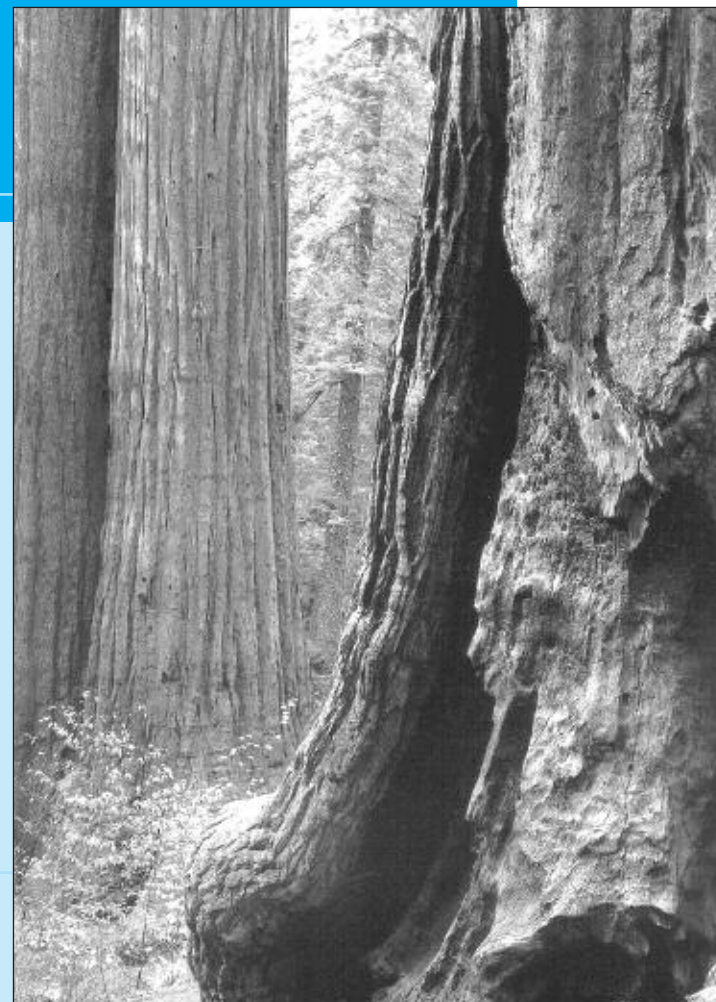
The shuttle bus stops at the Wawona Store, South Entrance, and Mariposa Grove. Visitors may park at the Wawona Store to board the bus. Shuttles operate beginning at 9:00 a.m., and the last shuttle leaves the grove at 6:00 p.m., or after the last tour. Visitors are strongly encouraged to use this free bus service to help alleviate congestion and lengthy parking delays.

Merced Grove

Yosemite's quietest stand of sequoias is the Merced Grove, accessible only on foot. It's a 4-mile roundtrip hike or ski into the grove from Big Oak Flat Road (Highway 120 West). Located 3.5 miles north of Crane Flat and 4.5 miles south of the Big Oak Flat Entrance, the trailhead is marked by a post labeled B-10 and a road sign. Allow 3 hours for the roundtrip hike or ski to this group of about 20 sequoias.

Tuolumne Grove

This cluster of about 25 sequoias is near Crane Flat at the intersection of Big Oak Flat and Tioga roads. The former route of the Big Oak Flat Road leads downhill from Crane Flat into the Tuolumne Grove. Now closed to cars, this 2-mile roundtrip walk or ski drops 500 feet (150 meters) into the grove. The trip is moderately strenuous on the uphill return. Within the Tuolumne Grove there is an easy half-mile, self-guiding nature trail.



Mariposa Grove of Giant Sequoias
 Photo by Larry Ulrich

Yosemite Today

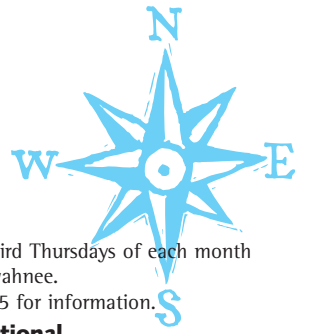
Published by the National Park Service, in cooperation with DNC Parks & Resorts at Yosemite, Inc.

Editor Carol Blaney
Design / Production Skip Gaynard Designs
Printing Casey Printing, Inc.

We're Interested . . .

We are always looking for ways to improve our visitor publications. You can help by sending your comments via e-mail to Carol_Blaney@nps.gov or fax to 209/372-0617.

Park Facilities and Services



ATM

Yosemite Village
South of Village Store (Bank of America)
Inside Village Store

Yosemite Lodge at the Falls
Inside main registration area

Curry Village Inside gift/grocery store

Wawona Inside Wawona Store

El Portal
On Highway 140 at the Yosemite View Lodge and the El Portal Market.

Babysitting

Limited babysitting is available for registered guests at Yosemite Lodge and The Ahwahnee. Call front desk or concierge in advance for more information.

Food & Beverage Service

These hours of operation are approximate. Current hours of operation are posted at each front desk or facility.

BADGER PASS *Closes for season April 2*
Skiers Grill 8:30 a.m. to 4:00 p.m.

Snowflake Room
Saturday, Sunday, and holidays
11:00 a.m. to 4:00 p.m.

YOSEMITE VILLAGE
Degnan's Loft *Opens for season April 14*
Friday 5:00 p.m. to 9:00 p.m.
Saturday - Sunday noon to 9:00 p.m.

Degnan's Delicatessen
7:00 a.m. to 5:00 p.m.

Village Grill *Opens for season April 14*
11:00 a.m. to 5:00 p.m.

YOSEMITE LODGE AT THE FALLS
Coffee Corner 6:30 a.m. to 2:00 p.m.

Food Court
Breakfast 6:30 a.m. to 11:00 a.m.
Lunch 11:00 a.m. to 2:00 p.m.
Dinner 5:00 p.m. to 8:00 p.m.

Mountain Room Lounge
Monday - Friday 4:30 p.m. to 11:00 p.m.
Saturday - Sunday noon to 11:00 p.m.

Mountain Room Restaurant
5:30 p.m. to 9:00 p.m.
April 16 Easter Brunch 8:30 a.m. to noon

THE AHWAHNEE
Dining Room
Breakfast 7:00 a.m. to 10:30 a.m.
Lunch 11:30 a.m. to 3:00 p.m.
Dinner 5:30 p.m. to 9:00 p.m.
Sunday Brunch 7:00 a.m. to 3:00 p.m.
Appropriate attire is respectfully requested for dinner. Reservations are recommended for dinner and Sunday Brunch. 209/372-1489

The Ahwahnee Bar 11:00 a.m. to 11:00 p.m.

CURRY VILLAGE
Guest Lounge 8:00 a.m. to 10:00 p.m.
Coffee Corner 7:00 a.m. to 11:00 a.m.

Curry Village Bar
Monday - Friday 5:00 p.m. to 10:00 p.m.
Saturday - Sunday noon to 10:00 p.m.

Pavillion Buffet
Breakfast 7:00 a.m. to 10:00 a.m.
Dinner 5:30 p.m. to 8:00 p.m.

Pizza Deck
Through April 7
Monday - Friday 5:00 p.m. to 9:00 p.m.
Saturday - Sunday noon to 9:00 p.m.
Beginning April 8
Monday to 9:00 p.m.

Happy Isles Snack Stand
Opens for the season April 7
11:00 a.m. to 5:00 p.m.

WAWONA HOTEL
Dining Room
Breakfast 7:30 a.m. to 10:00 a.m.
Lunch 11:30 a.m. to 1:30 p.m.
Dinner 5:30 p.m. to 9:00 p.m.
Beginning April 16
Sunday Brunch 10:30 a.m. to 1:30 p.m.
Reservations taken for 8 or more 209/375-1425

Guest Lounge 5:00 p.m. to 9:00 p.m.

Gas Stations

Wawona
9:00 a.m. to 6:00 p.m. Diesel & propane available.
Pay at the pump 24 hours with credit or debit card.

Crane Flat
9:00 a.m. to 5:00 p.m. Diesel available.
Pay at the pump 24 hours with credit or debit card.

El Portal
9:00 a.m. to noon; 2:00 p.m. to 5:00 p.m.
Diesel available.
Pay at the pump 24 hours with credit or debit card.

Gifts, Books, & Apparel

YOSEMITE VILLAGE
The Ansel Adams Gallery
9:00 a.m. to 5:00 p.m.

Yosemite Bookstore
9:00 a.m. to 5:00 p.m. Inside Valley Visitor Center

Yosemite Museum Store
Thursday - Monday 9:30 a.m. to 4:30 p.m.

Village Store
Sunday - Thursday 8:00 a.m. to 8:00 p.m.
Friday - Saturday 8:00 a.m. to 9:00 p.m.

Habitat Yosemite
Thursday - Monday 9:00 a.m. to 5:00 p.m.

Sport Shop 8:30 a.m. to 6:00 p.m.

BADGER PASS *Closes for season April 2*
Sport Shop 9:00 a.m. to 4:00 p.m.

YOSEMITE LODGE AT THE FALLS
Gift/Grocery
Sunday - Thursday 8:00 a.m. to 8:00 p.m.
Friday - Saturday 8:00 a.m. to 9:00 p.m.

Nature Shop 11:00 a.m. to 6:00 p.m.

THE AHWAHNEE
Gift Shop 8:00 a.m. to 9:00 p.m.

Sweet Shop 7:00 a.m. to 10:00 p.m.

CURRY VILLAGE
Mountain Shop 8:00 a.m. to 6:00 p.m.
Gift/Grocery 8:00 a.m. to 8:00 p.m.

WAWONA
Wawona Store & Pioneer Gift Shop
8:00 a.m. to 6:00 p.m.

Groceries

Yosemite Lodge at the Falls Gift/Grocery
Sunday - Thursday 8:00 a.m. to 8:00 p.m.
Friday - Saturday 8:00 a.m. to 9:00 p.m.

Village Store
Sunday - Thursday 8:00 a.m. to 8:00 p.m.
Friday - Saturday 8:00 a.m. to 9:00 p.m.

Degnan's Delicatessen 7:00 a.m. to 5:00 p.m.

Housekeeping Camp Grocery
Opens for season April 14 at noon
8:00 a.m. to 6:00 p.m.

Curry Village Gift/Grocery 8:00 a.m. to 8:00 p.m.

Wawona Store 8:00 a.m. to 6:00 p.m.

Crane Flat 9:00 a.m. to 5:00 p.m.

El Portal Market 9:00 a.m. to 7:00 p.m.

Internet Access

Internet access is available to all park visitors at Yosemite Lodge at the Falls in Yosemite Valley. Both wireless (wi-fi) access (\$5.95/half-day and \$9.95/day) and kiosks (\$0.25/minute) are available.

Showers & Laundromat

SHOWERS
Curry Village 24 hours
Housekeeping Camp 7:00 a.m. to 10:00 p.m.
Opens for season April 14 at noon

LAUNDROMAT
Housekeeping Camp 8:00 a.m. to 10:00 p.m.

Recycling

Village Store Recycling Center
Tuesday, Thursday, and Saturday
noon to 4:00 p.m.

Post Offices

Main Post Office - Yosemite Village
Monday - Friday 8:30 a.m. to 5:00 p.m.
Saturday 10:00 a.m. to noon

Yosemite Lodge at the Falls Post Office
Monday - Friday 11:30 a.m. to 2:45 p.m.

Wawona Post Office
Monday - Friday 9:00 a.m. to 5:00 p.m.
Saturday 9:00 a.m. to noon

El Portal Post Office
Monday - Friday 8:30 a.m. to 12:30 p.m.,
1:30 p.m. to 5:00 p.m.

Auto Service, Towing, and Repair (AAA)

Yosemite Village Garage
8:00 a.m. to noon, 1:00 p.m. to 5:00 p.m.
Towing 24 hours. Propane available until 4:00 p.m.
209/372-8320

Service Organizations

AI-Anon
7:00 p.m. Wednesday
DNC General Office Building
(Executive Conference Room) Yosemite Village

Alcoholics Anonymous
7:30 p.m. Sunday, Tuesday, and Thursday
DNC General Office Building
(Employee Training Center) Yosemite Village

General Park Information

Emergency 911

Fire - Police - Medical Emergency:
Dial 911, 24 hours a day (from hotel room 9-911)

Information

Road, Weather, and General Park Information
209/372-0200 www.nps.gov/yose
Campground Reservations
800/436-7275 reservations.nps.gov

Medical

Yosemite Medical Clinic
Emergency care: 24 hours daily
Drop-in and urgent care: 8:00 a.m. to 7:00 p.m.

Appointments
8:00 a.m. to 5:00 p.m. Monday - Friday
Located on Ahwahnee Drive in Yosemite Valley, the clinic provides routine and emergency medical care, 24-hour paramedic/ambulance services, limited pharmacy, lab, x-ray, physical therapy, and Mountain Crisis Services for victims of domestic violence. 209/372-4637

PAD Program

Yosemite's Public Access Defibrillation (PAD) Program is designed to protect park visitors and staff from sudden cardiac arrest. All automated external defibrillator (AED) cabinets have been placed in high visitor-use locations and are open and accessible to anyone in the event of a medical emergency. For more information about the PAD Program, contact the Yosemite Medical Clinic.

AEDs can be found at the following locations: Village Store (Yosemite Village); registration desks at Yosemite Lodge at the Falls, Curry Village, The Ahwahnee, and Wawona Hotel; Crane Flat Store; Badger Pass Lodge (winter); and Glacier Point (summer).

Dental Services
Adjacent to Medical Clinic. For hours, call 209/372-4200. If no answer, call 209/372-4637.

Accessible Services

The *Yosemite Accessibility Guide* is available at park entrance stations, visitor centers, and online at www.nps.gov/yose/access

TTYs are available inside The Ahwahnee and Yosemite Lodge at the Falls, and outside the Valley Visitor Center and Curry Village front desk.

Accommodations

For advance reservations or information (rooms or activities), call 559/252-4848, or visit www.YosemitePark.com. For availability on day of arrival, check at any front desk.

Bear Canister Rental

Available for \$5 per trip at the Yosemite Valley Visitor Center, Wawona Store, and the Hetch Hetchy Entrance Station. Canisters may be rented or returned at any rental location in the park.

Wilderness Permits

Anyone going overnight into Yosemite's backcountry must have a wilderness permit. All wilderness centers are closed for the season. Self-register at one of the following locations: Valley Visitor Center, Hill's Studio Porch (near Wawona Hotel), Hetch Hetchy Entrance Station, Big Oak Flat Information Station, Tuolumne Meadows Ski Hut, or Badger Pass A-frame building. All overnight visitors leaving from Badger Pass must obtain a wilderness permit from the Badger Pass A-frame building.

Weather Radio

The National Weather Service broadcasts weather information for Yosemite National Park 24 hours a day on NOAA Weather Radio station KAG-94, on a frequency of 162.450 MHz. Please note that reception may not be available in remote areas of the park.

Lions Club

Meets first and third Thursdays of each month at noon, The Ahwahnee.
Call 209/372-4475 for information.

Rotary International

Meets Thursdays for lunch at noon in The Ahwahnee Mural Room. Visiting Rotarian families and guests welcome. For meeting reservations or information, call 209/372-8459.

Religious Services

YOSEMITE COMMUNITY CHURCH
(Nondenominational Christian)
Pastor Brent Moore 209/372-4831
Various Bible Studies during the week.
Counseling provided. Call pastor for appointment.

Worship Service

Yosemite Valley Chapel
Sunday 9:15 a.m. (Children's Church and Nursery available)
Sunday 6:30 p.m. (no child care)
Thursday 7:00 p.m. (no child care)

Holy Week Services

April 13: Maundy Thursday 7:00 p.m.
April 14: Good Friday noon and 7:00 p.m.
April 16: Easter Sunday
Lower Pines Campground Amphitheater 7:00 a.m.
Chapel Service/Children's Church/Nursery 9:15 a.m.
Chapel Service 11:00 a.m.

ROMAN CATHOLIC

Rev. Raymond J. Duffy 209/372-4729

Mass in Yosemite Valley

Yosemite Valley Visitor Center Theater
Sunday 10:00 a.m.

Holy Week Services

April 13: Holy Thursday 7:30 p.m.
April 14: Good Friday 7:30 p.m.
April 15: Holy Saturday 7:30 p.m.

CHURCH OF CHRIST

Ron Skelton 209/379-2307
El Portal Chapel
Worship Service Sunday 9:00 a.m.

CROSSWAY CHURCH (Christian Protestant)

Pastor Steve Hughes 209/379-2428
Wednesday at the Girl's Club
7:00 p.m. *through April 12*
7:30 p.m. *after April 12*

EL PORTAL COMMUNITY CHURCH

Pastor Russ Marsh 209/379-2255
El Portal Chapel

Worship Service

Sunday 10:30 a.m.
Small Group Study Wednesday 6:30 p.m.

Recreation *Weather permitting*

YOSEMITE MOUNTAINEERING SCHOOL AND GUIDE SERVICE

Yosemite Mountaineering School and Guide Service offers lessons and guided climbing at all levels, overnight backpacking, and guided day hikes to spectacular areas of Yosemite Valley and the high country.

Badger Pass 209/372-8444

Closes for the season April 2
8:30 a.m. to 4:00 p.m.

Curry Village 209/372-8344

Opens for the season April 3
8:30 a.m. to noon, 1:00 p.m. to 5:00 p.m.

BADGER PASS SKI AREA

Closes for the season April 2
Ski lifts: 9:00 a.m. to 4:00 p.m.
Call 209/372-1000 for conditions and information.

BICYCLE RENTALS

Yosemite Lodge 10:00 a.m. to 4:00 p.m.
(closed for lunch 1:30 p.m. to 2:00 p.m.)

GOLF

Open April 1, conditions permitting
Wawona Hotel 9:00 a.m. to 4:00 p.m.

Tours

Yosemite Lodge at the Falls Tour and Activity Desk 7:30 a.m. to 7:00 p.m.

Yosemite Village Tour Desk
7:30 a.m. to 3:00 p.m.

Curry Village Tour Kiosk
7:30 a.m. to 3:00 p.m.

Big Trees Tour Desk 9:30 a.m. to 6:00 p.m.

SIGHTSEEING TOURS

Valley Floor Tour
This 26-mile, 2-hour tour departs daily at 10:00 a.m. and 2:00 p.m. from Yosemite Lodge at the Falls in Yosemite Valley.

Big Trees Tram Tour

Weekends beginning April 22, conditions permitting
Tours from 10:00 a.m. to 5:00 p.m.