



Experience Your America

# Yosemite Today

December 13, 2006 - January 23, 2007

## Yosemite National Park

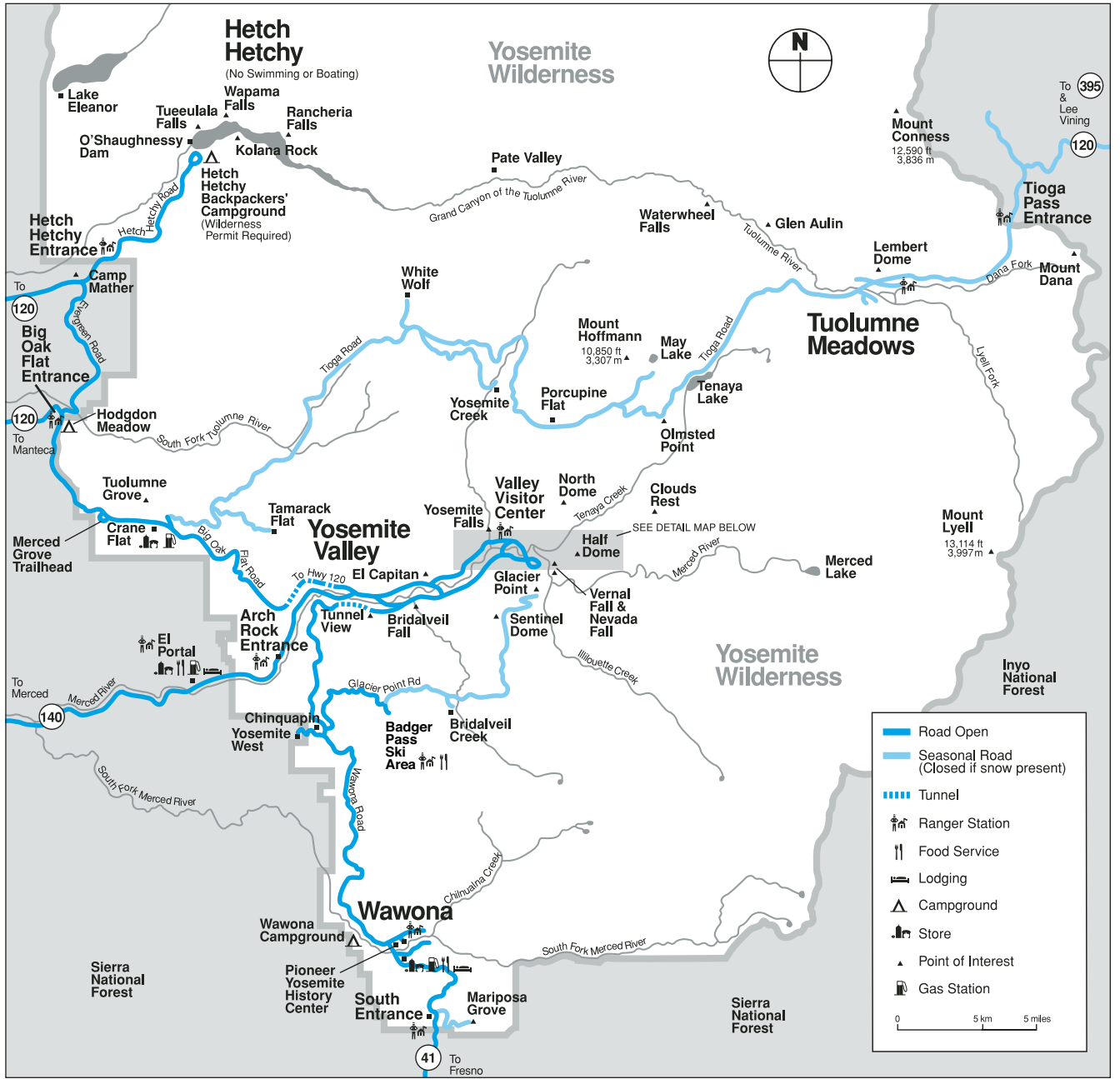
### ROAD INFO

Construction may cause short delays or detours on some park roads. Call 209/372-0200 for recorded road information.

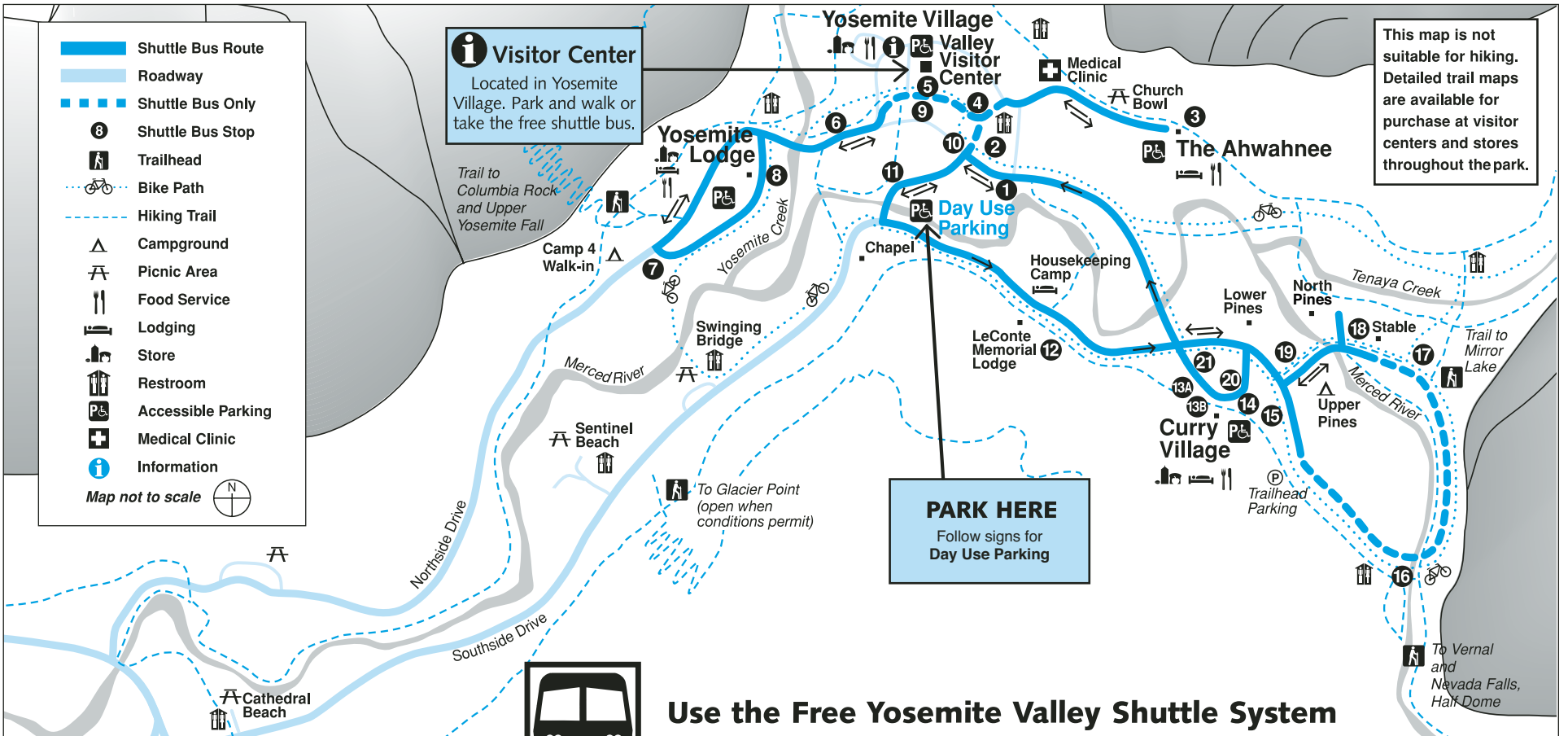
### SPIRIT OF YOSEMITE



Don't miss this award-winning film! Shown free of charge every 30 minutes at the Yosemite Valley Visitor Center Theater



## Yosemite Valley Shuttle Bus Map



### Use the Free Yosemite Valley Shuttle System

**VALLEY VISITOR SHUTTLE BUS**  
7:00 a.m. - 10:00 p.m.

Shuttle buses operate daily at 30-minute intervals. Times are posted at each stop. All buses follow the same route, serving stops in numerical order. Shuttle bus service may be affected by construction projects. Check bus stops for more information.

- 1 Yosemite Village / Day Parking
- 2 Yosemite Village
- 3 The Ahwahnee
- 4 Yosemite Village / Degnan's Complex
- 5 Valley Visitor Center
- 6 Lower Yosemite Fall
- 7 Camp 4 / Upper Yosemite Fall Trailhead
- 8 Yosemite Lodge
- 9 Valley Visitor Center
- 10 Yosemite Village
- 11 Sentinel Bridge / Yosemite Chapel
- 12 Housekeeping Camp / LeConte Memorial Lodge
- 13A Curry Village Rental Center
- 13B Curry Village Registration Desk
- 14 Curry Village Parking
- 15 Upper Pines Campground *Closed for season*
- 16 Happy Isles / John Muir Trailhead *Closed for season*
- 17 Mirror Lake Junction *Closed for season*
- 18 Stable *Closed for season*
- 19 Lower Pines Campground
- 20 Curry Village Parking
- 21 Curry Village Rental Center

### YOSEMITE AREA REGIONAL TRANSPORTATION SYSTEM



YARTS bus stops are located in Yosemite Valley at The Ahwahnee, Curry Village, Valley Visitor Center, and Yosemite Lodge. For bus schedules to and from the Yosemite area, call 1-877-98-YARTS, or visit YARTS online at [www.yarts.com](http://www.yarts.com).

# Scheduled Events

Programs printed in color are especially for children and their families.

NPS = National Park Service

DNC = DNC Parks & Resorts at Yosemite, Inc.

AAG = The Ansel Adams Gallery

S = Programs offered for a fee



Indicates facilities accessible to visitors in wheelchairs. Short steep inclines may be encountered.

	SUNDAY	MONDAY	TUESDAY	WEDNESDAY
<b>Yosemite Valley</b>	<p>9:00am <b>WEE WILD ONES</b> (except December 24) 45 min. Stories and activities for kids 6 and under. Ahwahnee Great Lounge fireplace (DNC) ♿</p> <p>2:00pm <b>Ranger Stroll—Rivers and Waterfalls</b> 1½ hrs. Front of Valley Visitor Center (NPS)</p> <p>3:00pm <b>STORY TIME</b> (December 17 only) ½ hr. Come hear Yosemite-related stories read aloud (for children 7 and under) Yosemite Lodge Cliff Room (DNC) ♿</p> <p>4:00pm <b>Winter Theater Live!</b> The Spirit of John Muir: Stories of Ice and Snow (December 24 only) 1 hr. Yosemite Lodge Cliff Room Tickets at tour desk or at door, if available (DNC) ♿</p> <p>7:00pm <b>Film - Ansel Adams</b> 1 hr. Check local postings for venue (AAG)</p>	<p>2:00pm <b>Ranger Stroll—Yosemite's First People</b> 1½ hrs. Front of Yosemite Museum (NPS)</p> <p>7:00pm <b>Evening Program</b> (except December 25) 1 hr. Check local postings for venue and topic (DNC/NPS) ♿</p>	<p>9:00am <b>Photography Walk</b> 2 hrs. Limited space. Reservations required Sign up/meet at The Ansel Adams Gallery Conditions permitting (AAG)</p> <p>2:00pm <b>Ranger Stroll—A Changing Yosemite</b> 1½ hrs. Front of Valley Visitor Center (NPS)</p> <p>7:00pm <b>Evening Program</b> 1 hr. Check local postings for venue and topic (DNC/NPS) ♿</p>	<p>9:00am <b>WEE WILD ONES</b> (December 24 only) 45 min. Stories and activities for kids 6 and under. Ahwahnee Great Lounge fireplace (DNC) ♿</p> <p>2:00pm <b>Ranger Stroll—Rivers and Waterfalls</b> 1½ hrs. Front of Valley Visitor Center (NPS)</p> <p>3:00pm <b>STORY TIME</b> (December 17 only) ½ hr. Come hear Yosemite-related stories read aloud (for children 7 and under) Yosemite Lodge Cliff Room (DNC) ♿</p> <p>7:00pm <b>Evening Program</b> 1 hr. Check local postings for venue and topic (DNC/NPS) ♿</p>
<b>Badger Pass</b>	<p>10:30am <b>Ranger Snowshoe Walk</b> 2 hrs. See details below (NPS) \$</p>	<p>10:30am <b>Ranger Snowshoe Walk</b> 2 hrs. See details below (NPS) \$</p> <p>6:30pm <b>Full Moon Snowshoe Walk</b> (January 1 only) 2 hrs. No experience required. See details below. Advance sign-up at tour desk. Badger Pass Lodge (DNC) \$</p>	<p>10:30am <b>Ranger Snowshoe Walk</b> 2 hrs. See details below (NPS) \$</p> <p>6:30pm <b>Full Moon Snowshoe Walk</b> (January 2 only) 2 hrs. No experience required. See details below. Advance sign-up at tour desk. Badger Pass Lodge (DNC) \$</p>	<p>10:30am <b>Ranger Snowshoe Walk</b> 2 hrs. See details below (NPS) \$</p> <p>6:30pm <b>Full Moon Snowshoe Walk</b> (January 3 only) 2 hrs. No experience required. See details below. Advance sign-up at tour desk. Badger Pass Lodge (DNC) \$</p>



## AMERICA'S BEST IDEA

### UNIQUE IMAGES FROM ALL 58 NATIONAL PARKS

Yosemite Museum  
Through January 28, 2007

Landscape photographer Stan Jorstad has traveled to all 58 national parks in the United States to capture memorable images of our most scenic and historic places. These photographs were recently published in a striking book, *America's Best Idea—A Photographic Journey Through Our National Parks*, available in Yosemite bookstores. All proceeds from the book benefit ranger and education programs in Yosemite. Come and enjoy Jorstad's images — and your heritage — at the Yosemite Museum exhibit.

## Yosemite Winter Theater

THE SPIRIT OF JOHN MUIR: STORIES OF ICE AND SNOW

4:00 p.m. and 7:00 p.m.

See above for dates

1hr. Yosemite Lodge Cliff Room

Actor Lee Stetson portrays John Muir as he delights audiences with tales of Muir's daring winter adventures.

Tickets may be purchased in advance from the Yosemite Lodge tour desk, or if seating is available, at the door. ♿

## Winter Family Celebration

DECEMBER 30

1:00 p.m. - 4:00 p.m.

Curry Village Guest Lounge

Join park interpretive staff for an afternoon of crafts, learning stations, walks, and winter fun!

## A Yosemite Holiday to Remember

DECEMBER 15, 2006 to JANUARY 1, 2007

Caroling, concerts, & holiday cheer will ring throughout Yosemite Valley!

Check local listings for a schedule of special events.

## Yosemite Valley

### Valley Visitor Center and Bookstore

Open 9:00 a.m. to 5:00 p.m. and located in Yosemite Village just west of the main post office (shuttle stops #5 and #9), the visitor center offers information, maps and books. ♿ TTY

The exhibit hall of the visitor center is being renovated and will be closed until May 2007.

#### FILM

##### Spirit of Yosemite

This inspiring visitor-orientation film provides a stunning overview of Yosemite's splendor. It is shown every 30 minutes Monday through Saturday 9:30 a.m. to 4:30 p.m., and Sunday (and December 25) noon to 4:30 p.m. in the Valley Visitor Center Theater. ♿

### Yosemite Cemetery

This historic cemetery is located across the street just west of the Yosemite Museum. People buried here include American Indians and others who played an important role in the development of what is now Yosemite National Park. A *Guide to the Yosemite Cemetery* is available at the Valley Visitor Center.

### The Indian Village of Ahwahnee

Located behind the Yosemite Museum and open during daylight hours, the village offers exhibits on Ahwahneechee life. ♿

### Yosemite Museum

Located in Yosemite Village next to the Valley Visitor Center. ♿

#### FEATURES

**Museum Gallery** Open 9:00 a.m. to 4:30 p.m. (closed for lunch), the gallery offers a variety of exhibits.

**America's Best Idea**  
Through January 28, 2007

Come enjoy this beautiful photographic display of all 58 national parks from the recently published book, *America's Best Idea—A Photographic Journey Through Our National Parks*. See details at left.

#### Indian Cultural Exhibit

Open 9:00 a.m. to 4:30 p.m. (closed for lunch), the exhibit interprets the cultural history of Yosemite's native Miwok and Paiute people from 1850 to the present. Demonstrations of traditional skills are presented. No food or drink permitted.

#### Yosemite Museum Store

Open 9:00 a.m. to 4:30 p.m., the store offers traditional American Indian arts and crafts and books on related subjects.

### The Ansel Adams Gallery

Located in Yosemite Village next to the Valley Visitor Center and open daily from 9:00 a.m. to 5:00 p.m., the gallery offers the work of Ansel Adams, contemporary photographers, and other fine artists. In addition, handcrafts, books, gifts, digital services, and photography supplies are available. Scheduled activities are listed on the front porch. For more information, call 209/372-4413, or visit [www.anseladams.com](http://www.anseladams.com).

## Outdoor Adventures with the Yosemite Association

These programs are offered for a fee, part of which supports other interpretation and education programs in Yosemite.

**Dewey Point Snowshoe Trek with Karen Amstutz** JANUARY 13

**Snowshoe Explorations with Naturalist Emily Jacobs** JANUARY 20

For details, call the Yosemite Association at 209/379-2321, visit [www.yosemite.org](http://www.yosemite.org), or check at the Valley Visitor Center.



## December 13, 2006 - January 23, 2007

WEDNESDAY	THURSDAY	FRIDAY	SATURDAY
<p><b>WILD ONES</b> 10:00am only Stories and activities for kids 6 and under. Ahwahnee Great Lounge fireplace</p> <p><b>Geology</b> 11:00am Front of Valley Visitor Center (NPS)</p> <p><b>Evening Program</b> 7:00pm Near Yosemite-related stories for children 7 and under Location: Yosemite Lodge Cliff Room Topic: Ahwahnee Great Lounge</p> <p><b>Evening Program</b> 7:00pm Check local postings for venue and topic (DNC/NPS) &amp;</p>	<p>9:00am <b>Photography Walk</b> 2 hrs. Limited space. Reservations required Sign up/meet at The Ansel Adams Gallery Conditions permitting (AAG)</p> <p>2:00pm <b>Ranger Stroll—Yosemite's Legacy</b> 1½ hrs. Front of Valley Visitor Center (NPS)</p> <p>7:00pm <b>Evening Program</b> 1 hr. Check local postings for venue and topic (DNC/NPS) &amp;</p>	<p>9:00am <b>WEE WILD ONES</b> (January 5, 12 and 19 only) 45 min. Stories and activities for kids 6 and under. Ahwahnee Great Lounge fireplace (DNC) &amp;</p> <p>2:00pm <b>Ranger Stroll—Wild About Wildlife</b> 1½ hrs. Front of Valley Visitor Center (NPS)</p> <p>3:00pm <b>STORY TIME</b> (December 29 only) ½ hr. Come hear Yosemite-related stories read aloud (for children 7 and under). Yosemite Lodge Cliff Room (DNC) &amp;</p> <p>7:00pm <b>Winter Theater Live!</b> The Spirit of John Muir: Stories of Ice and Snow (December 15 and 29 only) 1 hr. Yosemite Lodge Cliff Room Tickets at tour desk or at door, if available (DNC) \$ &amp;</p> <p><b>Evening Program</b> 1 hr. Check local postings for venue and topic (DNC/NPS) &amp;</p>	<p>9:00am <b>Photography Walk</b> 2 hrs. Limited space. Reservations required Sign up/meet at The Ansel Adams Gallery Conditions permitting (AAG)</p> <p>1:00pm <b>WINTER FAMILY CELEBRATION</b> (December 30 only) 3 hrs. Curry Village Guest Lounge. See details below (DNC/NPS) &amp;</p> <p>2:00pm <b>Ranger Stroll—Trees</b> (except December 30) 1½ hrs. Ahwahnee shuttle stop #3 (NPS)</p> <p>3:00pm <b>Fine Print Viewing</b> 1 hr. Very limited space Sign up in advance inside The Ansel Adams Gallery (AAG)</p> <p>4:00pm <b>CHILDREN'S STORYTIME</b> ½ hr. For children 7 and under (must be accompanied by an adult). Front of The Ansel Adams Gallery (at Degnan's Loft in inclement weather) (AAG)</p> <p><b>Winter Theater Live!</b> The Spirit of John Muir: Stories of Ice and Snow (December 23 only)</p> <p>4:00pm (December 23 only) 7:00pm (December 16 and 30 only) 1 hr. Yosemite Lodge Cliff Room Tickets at tour desk or at door, if available (DNC) \$ &amp;</p> <p>7:00pm <b>Evening Program</b> 1 hr. Check local postings for venue and topic (DNC/NPS) &amp;</p>
<p><b>Snowshoe Walk</b> December 13) 2 hrs. See details below (NPS) \$</p> <p><b>Snowshoe Walk</b> January 1) 2 hrs. No experience necessary. See details below. Advance sign-up at Badger Pass Lodge (DNC) \$</p>	<p>10:30am <b>Ranger Snowshoe Walk</b> (except December 14) 2 hrs. See details below (NPS) \$</p>	<p>10:30am <b>Ranger Snowshoe Walk</b> (except December 15) 2 hrs. See details below (NPS) \$</p>	<p>10:30am <b>Ranger Snowshoe Walk</b> (except December 16) 2 hrs. See details below (NPS) \$</p>

## Wawona

### Pioneer Yosemite History Center

Go back to a time of horse-drawn wagons, a covered bridge, and log cabins. Visit the Pioneer Yosemite History Center, explore Yosemite's history, and learn how Yosemite was the inspiration for national parks across America and around the world. The center is always open, and interpretive signs and brochures are available. ♿

## Badger Pass

Opens for season December 15, weather permitting

### Badger Pass Ski Area

Badger Pass, California's oldest operating ski area, is the center of Yosemite ski and snowboarding activity during the winter. It is located at 7,200 feet in elevation and is a one-hour drive from Yosemite Valley on the Glacier Point Road. There are 10 runs, three ski lifts, downhill and cross-country ski schools, ski rentals, and a day lodge. Cross-country skiers will find groomed and ungroomed trails that originate at Badger Pass; tracks are groomed on the Glacier Point Road all the way to Glacier Point. Wilderness permits are available at the Badger Pass A-frame. Call 209/372-1000 for ski conditions.

### Badger Pass Bus

Ride the free bus to Badger Pass Ski Area. Road and weather conditions permitting, the bus leaves daily from Curry Village at 8:00 a.m. and 10:30 a.m., the Yosemite Transportation System office (next to the Yosemite Village Garage) at 8:10 a.m. and 10:40 a.m., The Ahwahnee at 8:15 a.m. and 10:45 a.m., and Yosemite Lodge at 8:30 a.m. and 11:00 a.m. Return buses leave Badger Pass at 2:00 pm and 4:00 p.m. Several buses operate on busy days. Allow at least one hour for a one-way trip. Additional information is available at hotel front desks.

### Ranger Snowshoe Walk— Explore the Forest in Winter

Daily beginning December 17, 10:30 a.m., conditions permitting

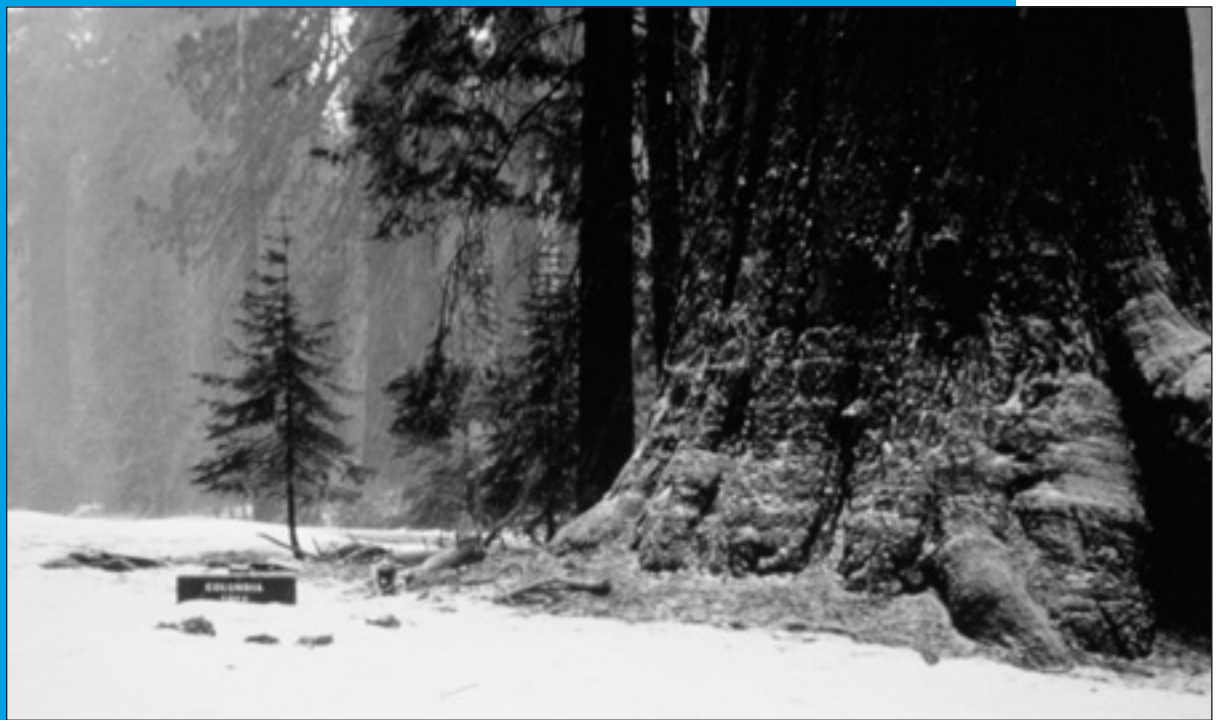
Enter the dazzling world of Yosemite winter with an expert naturalist. Join an NPS ranger at the Badger Pass A-frame for a moderate/strenuous two-hour walk (not recommended for children under 10 yrs.). Wear warm clothing and boots. Showshoes provided for a suggested donation of \$5.

### Full Moon Snowshoe Walks

January 1-3, 2007, 6:30 p.m., conditions permitting

Join an interpreter for a two- to three-mile walk in a moonlit winter wonderland. Watch the moon rise over majestic firs at Badger Pass. No experience necessary; however, this program is not recommended for children under 10, as it is moderately strenuous. Visit a tour desk, Badger Pass Lodge, or call 209/372-1240 for required advance reservations. Tickets are \$14.75 (snowshoes included), or \$5 (bring your own snowshoes).

*Note: Ranger and Full Moon Snowshoe walks will be canceled if the Badger Pass Road closes, or if weather conditions are too severe.*



## Sequoia Groves in Winter

Mariposa Grove of  
Giant Sequoias  
NPS Photo

### Mariposa Grove

Located at Yosemite's southernmost end, the Mariposa Grove is the park's largest stand of giant sequoias, with about 500 trees. Allow 1½ hours driving time from Yosemite Valley to reach the grove. A few giant sequoias are visible from the parking area. Trails into the grove extend uphill from the far end of the parking lot, and interpretive signs between the trailhead and the California Tree offer a self-guiding tour. Written translations in German, French, Spanish, and Japanese are available at the trailhead.

The access road to the grove closes during the winter. If the road is closed, the four-mile roundtrip walk from Yosemite's south entrance to the grove takes two to three hours (longer for hikes into the grove).

*Trailers are prohibited on the Mariposa Grove Road.*

### Tuolumne Grove

This cluster of about 25 sequoias is near Crane Flat at the intersection of Big Oak Flat and Tioga roads. Walk one mile (with a 500-ft. drop in elevation) into the grove along the former route of the Big Oak Flat Road, now closed to cars. The trip is moderately strenuous on the uphill return. Within the Tuolumne Grove there is an easy, half-mile, self-guiding nature trail.

### Merced Grove

Yosemite's quietest stand of sequoias is the Merced Grove, a group of about 20 trees accessible only on foot. It's a four-mile roundtrip hike or ski (about three hours) into the grove from Big Oak Flat Road (Highway 120 West). Located 3½ miles north of Crane Flat and 4½ miles south of the Big Oak Flat Entrance, the trailhead is marked by a post labeled B-10 and a road sign.

## Yosemite Today

Published by the National Park Service, in cooperation with DNC Parks & Resorts at Yosemite, Inc.

Editor **Carol Blaney**  
Design / Production **Skip Gaynard Designs**  
Printing **Casey Printing, Inc.**

### We're Interested . . .

We are always looking for ways to improve our visitor publications. You can help by sending your comments via e-mail to Carol\_Blaney@nps.gov or fax to 209/372-0617.



# Park Facilities and Services



## ATM

### Yosemite Village

South of Village Store (Bank of America)  
Inside Village Store

**Yosemite Lodge** Inside main registration area

**Curry Village** Inside gift/grocery store

**Wawona** Inside Wawona Store

### El Portal

On Highway 140 at the Yosemite View Lodge and the El Portal Market.

## Babysitting

Limited babysitting is available for registered guests at Yosemite Lodge and The Ahwahnee. Call front desk or concierge for additional information.

## Food & Beverage Services

These hours of operation are approximate. Current hours of operation are posted at each front desk or facility.

### BADGER PASS

Facilities open December 15, weather permitting

**Skiers Grill** 8:30 a.m. to 4:00 p.m.

**Snowflake Room**

Friday – Sunday & holidays 10:00 a.m. to 4:30 p.m.

### YOSEMITE VILLAGE

**Degnan's Delicatessen** 7:00 a.m. to 5:00 p.m.

### YOSEMITE LODGE

**Coffee Corner** 6:30 a.m. to noon

**Food Court**

Breakfast 6:30 a.m. to 11:00 a.m.

Lunch-Dinner 11:30 a.m. to 7:30 p.m.

December 15 - January 1, & January 5-6, 12-14 & 19-20

Lunch-Dinner 11:30 a.m. to 8:00 p.m.

**Mountain Room Lounge**

Monday – Friday 4:30 p.m. to 10:30 p.m.

Saturday – Sunday noon to 10:30 p.m.

December 25 - January 2 Noon to 10:30 p.m.

December 31 Noon to 1:00 a.m.

**Mountain Room Restaurant**

Sunday - Thursday 5:00 p.m. to 8:30 p.m.

Friday - Saturday 5:00 p.m. to 9:00 p.m.

December 25 4:00 p.m. to 9:00 p.m.

December 31 5:00 p.m. to 10:30 p.m.

Reservations are recommended. 209/372-1281

### THE AHWAHNEE

**Dining Room**

Breakfast 7:00 a.m. to 10:30 a.m.

Lunch 11:30 a.m. to 3:00 p.m.

Dinner 5:30 p.m. to 9:00 p.m.

Sunday Brunch 7:00 a.m. to 3:00 p.m.

Shortened lunch and brunch hours and no regular dinner service on these dates:

December 15, 16, 18, 19, 21, 22, 24 & 26

December 31 A la carte dinner

5:00 p.m. to 5:30 p.m.

Appropriate attire is respectfully requested for dinner. Reservations are recommended for all meals and required for dinner. 209/372-1489

**The Ahwahnee Bar**

11:00 a.m. to 11:00 p.m. Food service available

### CURRY VILLAGE

**Coffee Corner** 7:00 a.m. to 11:00 a.m.

December 16 - January 7 & January 13-14 & 20-21

**Pizza Deck**

December 15 - 21, January 2-6, 12 & 19

5:00 p.m. to 9:00 p.m.

December 22 - January 1 & January 20

Noon to 9:00 p.m.

January 13 Noon to 4:00 p.m.

**Pavillion Buffet**

Ski Buffet January 13 only

Dinner 5:30 p.m. to 8:00 p.m.

Dancing 8:00 p.m. to 10:00 p.m.

### WAWONA HOTEL

**Dining Room**

Open December 14 (dinner) - January 7 (breakfast)

& January 12 (dinner) - January 15 (breakfast)

Breakfast - 7:30 a.m. to 10:00 a.m.

Lunch - 11:30 a.m. to 1:30 p.m.

Dinner - 5:30 p.m. to 9:00 p.m.

December 24, 31 & January 1 Sunday Brunch

10:30 a.m. to 1:30 p.m.

December 25 Christmas Dinner Noon to 9:00 p.m.

December 31 New Year's Eve Dinner

5:30 p.m. to 7:00 p.m.

Reservations taken for 8 or more, and recommended for Christmas Dinner. 209/375-1425

**Guest Lounge** 5:00 p.m. to 9:30 p.m.

## Gifts, Books, & Apparel

### YOSEMITE VILLAGE

**The Ansel Adams Gallery**

9:00 a.m. to 5:00 p.m.

**Yosemite Bookstore**

9:00 a.m. to 5:00 p.m. Inside Valley Visitor Center

### Yosemite Museum Store

9:00 a.m. to 4:30 p.m.

**Village Store** 8:00 a.m. to 8:00 p.m.

December 25 9:00 a.m. to 8:00 p.m.

**Habitat Yosemite**

Friday - Sunday 9:00 a.m. to 5:00 p.m.

**Sport Shop** 9:00 a.m. to 5:00 p.m.

December 25 10:00 a.m. to 5:00 p.m.

### YOSEMITE LODGE

**Gift/Grocery** 8:00 a.m. to 8:00 p.m.

December 25 9:00 a.m. to 8:00 p.m.

**Nature Shop** 11:00 a.m. to 6:00 p.m.

### THE AHWAHNEE

**Gift Shop** 8:00 a.m. to 10:00 p.m.

Beginning January 2 8:00 a.m. to 9:00 p.m.

**Sweet Shop** 7:00 a.m. to 10:00 p.m.

### CURRY VILLAGE

**Mountain Shop** 8:30 a.m. to 6:00 p.m.

December 25 10:00 a.m. to 6:00 p.m.

**Gift/Grocery** 8:00 a.m. to 7:00 p.m.

December 25 9:00 a.m. to 6:00 p.m.

### WAWONA

**Wawona Store & Pioneer Gift Shop**

8:00 a.m. to 6:00 p.m.

December 25 10:00 a.m. to 5:00 p.m.

### BADGER PASS

Opens for season December 15, weather permitting

**Sport Shop**

9:00 a.m. to 4:00 p.m.

## Groceries

**Yosemite Lodge Gift/Grocery**

8:00 a.m. to 8:00 p.m.

December 25 9:00 a.m. to 8:00 p.m.

**Village Store** 8:00 a.m. to 8:00 p.m.

December 25 9:00 a.m. to 8:00 p.m.

**Degnan's Delicatessen** 7:00 a.m. to 5:00 p.m.

**Crane Flat Grocery**

9:00 a.m. to 5:00 p.m.

**Curry Village Gift/Grocery**

8:00 a.m. to 7:00 p.m.

December 25 9:00 a.m. to 6:00 p.m.

**Wawona Store & Pioneer Gift Shop**

8:00 a.m. to 6:00 p.m.

December 25 10:00 a.m. to 5:00 p.m.

**El Portal Market**

9:00 a.m. to 7:00 p.m. Closed Dec. 25 & January 1

## Showers & Laundromat

### SHOWERS

**Curry Village** 24 hours

### LAUNDROMAT

**Housekeeping Camp** 8:00 a.m. to 10:00 p.m.

## Recycling

**Yosemite Village Store Recycling Center**

Noon to 4:00 p.m. Tuesday, Thursday & Saturday

## Post Offices

**Main Post Office - Yosemite Village**

Monday – Friday 8:30 a.m. to 5:00 p.m.

Saturday 10:00 a.m. to noon

**Yosemite Lodge Post Office**

Monday – Friday 11:30 a.m. to 2:45 p.m.

**Wawona Post Office**

Monday – Friday 9:00 a.m. to 5:00 p.m.

Saturday 9:00 a.m. to noon

**El Portal Post Office**

Monday – Friday 8:30 a.m. to 12:30 p.m.,

1:30 p.m. to 5:00 p.m.

## Gas Stations

**Wawona**

9:00 a.m. to 6:00 p.m. Diesel & propane available.

Pay at the pump 24 hours with credit or debit card.

**Crane Flat**

Pay at the pump 24 hours with credit or debit card.

**El Portal**

8:00 a.m. to 5:00 p.m. Diesel available.

Pay at the pump 24 hours with credit or debit card.

## Auto Service, Towing, and Repair (AAA)

**Village Garage**

8:00 a.m. to noon, 1:00 p.m. to 5:00 p.m.

Towing 24 hours. Propane available until 4:00 p.m.

209/372-8320

## Internet Access

Internet access is available to all park visitors at three locations: Yosemite Lodge, Degnan's Deli, and the Mariposa County Library (Girls Club), south of the Yosemite Cemetery. Access at the library is free, requires a sign-up and is available during limited hours Monday through Thursday (check at library for details). At Yosemite Lodge, kiosks and wireless access

are available 24 hours for a fee. At Degnan's Deli, kiosks are available 7:00 a.m. to 5:00 p.m. for a fee.

## Service Organizations

**AI-Anon** 7:00 p.m. Wednesday

except December 27 & January 3

DNC General Office Building

(Executive Conference Room) Yosemite Village

**Alcoholics Anonymous**

7:30 p.m. Sunday, Tuesday, and Thursday

DNC General Office Building

(Employee Training Center) Yosemite Village

**Lions Club**

Meets the first and third Thursdays of each month

at noon, The Ahwahnee. Call 209/372-4475 for

information.

**Rotary International**

Meets Thursdays for lunch at noon in

The Ahwahnee Mural Room. Visiting Rotarian

families and guests welcome. For meeting

reservations or information, call 209/372-8459.

## Religious Services

**YOSEMITE COMMUNITY CHURCH**

(Nondenominational Christian)

Pastor Brent Moore 209/372-4831

Various Bible Studies during the week.

Counseling provided. Call pastor for appointment.

**Worship Service/Yosemite Valley Chapel**

Sunday 9:15 a.m. (Children's Church and

Nursery available)

Tuesday Evening Study 7:00 p.m. *Call for location*

Sunday 6:30 p.m. (no child care)

Thursday 7:00 p.m. (no child care)

**ROMAN CATHOLIC**

Rev. Raymond J. Duffy 209/372-4729

**Mass in Yosemite Valley**

Yosemite Valley Visitor Center Theater

Sunday 10:00 a.m.

December 25 Christmas Mass 10:00 a.m.

**CHURCH OF CHRIST**

Ron Skelton 209/379-2307

El Portal Chapel/Worship Service Sunday 9:00 a.m.

**CROSSWAY TRIBE OF JESUS**

(Christian Protestant)

Pastor Steve Hughes 209/379-2428

**Worship Gathering**

Wednesday 7:00 p.m.

Mariposa County Library/Girls Club

# General Park Information

## Emergency 911

Fire – Police – Medical Emergency:  
Dial 911, 24 hours a day (from hotel room 9-911)

## Information

**Road, Weather, and**

**General Park Information**

209/372-0200 [www.nps.gov/yose](http://www.nps.gov/yose)

**Campground Reservations**

800/436-7275 [reservations.nps.gov](http://reservations.nps.gov)

## Medical

**Yosemite Medical Clinic**

Emergency care: 24 hours daily

Drop-in and urgent care: 8:00 a.m. to 7:00 p.m.

Appointments

8:00 a.m. to 5:00 p.m. Monday – Friday

Located on Ahwahnee Drive in Yosemite Valley, the clinic provides routine and emergency medical care, 24-hour paramedic/ambulance services, limited pharmacy, lab, x-ray, physical therapy, and Mountain Crisis Services for victims of domestic violence. 209/372-4637

## PAD Program

Yosemite's Public Access Defibrillation (PAD) Program is designed to protect park visitors and staff from sudden cardiac arrest. All automated external defibrillator (AED) cabinets have been placed in high visitor-use locations and are open and accessible to anyone in the event of a medical emergency. For more information about the PAD Program, contact the Yosemite Medical Clinic.

AEDs can be found at the following locations: Village Store (Yosemite Village); registration desks at Yosemite Lodge, Curry Village, The Ahwahnee, and the Wawona Hotel; Crane Flat Store; Badger Pass Lodge (winter); and Glacier Point (summer).

## Dental Services

Adjacent to Yosemite Medical Clinic. For hours, call 209/372-4200. If no answer, call 209/372-4637.

## Accessible Services

The Yosemite *Accessibility Guide* is available at park entrance stations, visitor centers, and online at [www.nps.gov/yose/access](http://www.nps.gov/yose/access).

TTYs are available inside The Ahwahnee and Yosemite Lodge, and outside the Valley Visitor Center and Curry Village front desk.

A few accessible parking spaces are available just west of the Valley Visitor Center. To reach these, enter the Valley on Southside Drive, and go west (left) on Sentinel Drive. Turn left on Northside Drive, and follow the blue-and-white accessibility signs. Turn right on Village Drive. Stay on Village Drive until reaching the DO NOT ENTER sign marking the shuttle-bus route, and then turn left. Accessible parking spaces are on the right side of the road.

## Accommodations

For advance reservations or information (rooms or activities), call 559/252-4848, or visit [www.YosemitePark.com](http://www.YosemitePark.com). For availability on day of arrival, check at any front desk.

## Bear Canister Rental

Canisters are available for \$5 per trip at the Valley Visitor Center Bookstore, the Wawona Store, and the Hetch Hetchy Entrance Station.

## Wilderness Permits

Anyone going into Yosemite's backcountry must have a Wilderness permit. Self-register for permits at the Valley Visitor Center, Hill's Studio porch (near Wawona Hotel), Big Oak Flat Information Station, Hetch Hetchy Entrance Station, or Tuolumne Meadows Ski Hut. Self-register at Badger Pass A-frame after December 15 (weather permitting).

## Weather Radio

The National Weather Service broadcasts weather information for Yosemite National Park 24 hours a day on NOAA Weather Radio station KAD-94, on a frequency of 162.450 MHz. Please note that reception may not be available in remote areas of the park.

## Recreation *Weather permitting*

**YOSEMITE MOUNTAINEERING SCHOOL AND GUIDE SERVICE**

Yosemite Mountaineering School and Guide Service offers lessons and guided climbing at all levels, overnight backpacking, and guided day hikes to spectacular areas of Yosemite Valley and the high country.

**Curry Village** 209/372-8344

*Closed for season*

Guides available, weather permitting

**Badger Pass** 209/372-8444

*Opens for season December 15, weather permitting*

8:30