



Experience Your America

Yosemite Today

January 24 - February 27, 2007

Yosemite National Park

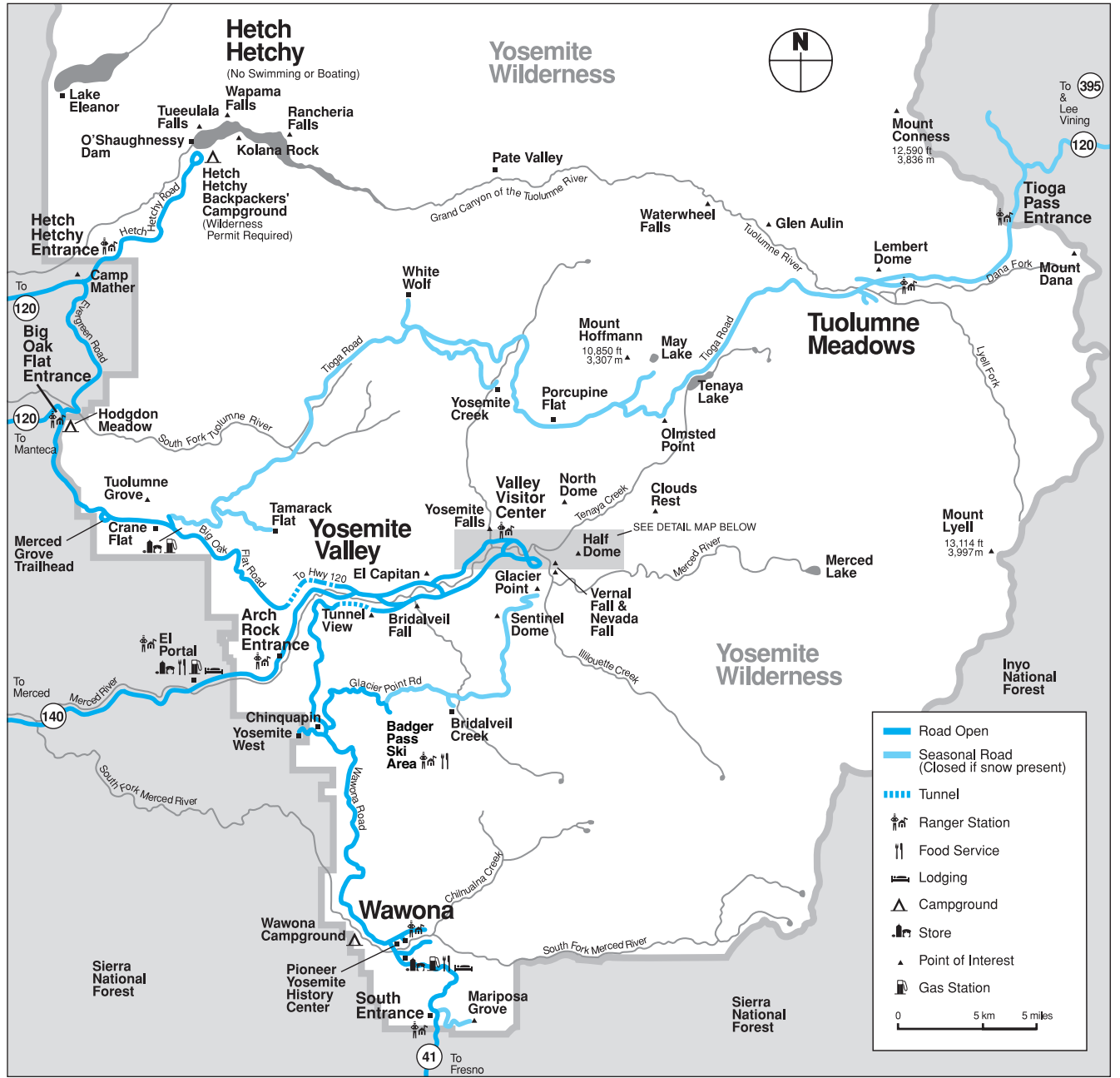
ROAD INFO

Construction may cause short delays or detours on some park roads. Call 209/372-0200 for recorded road information.

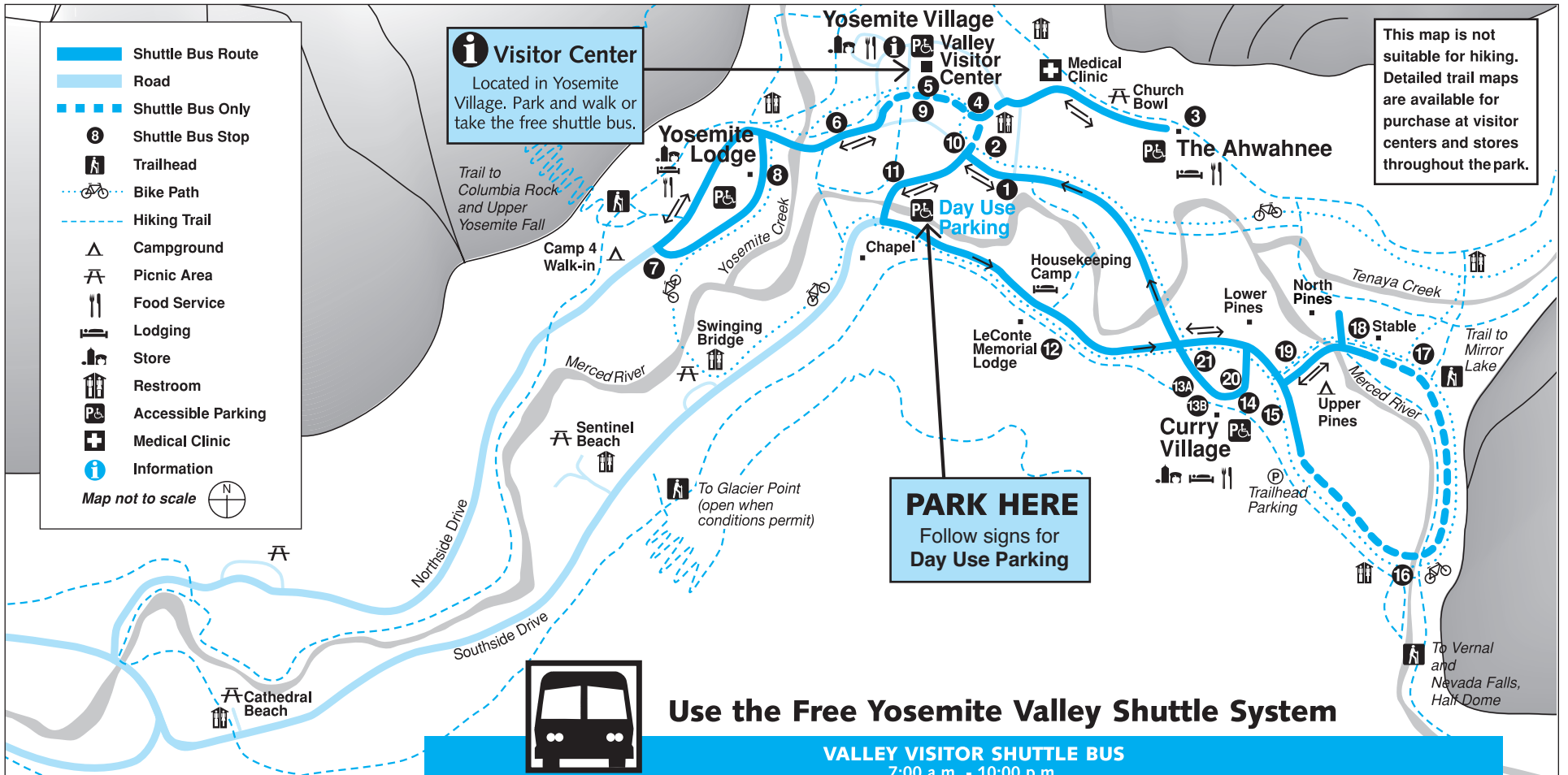
SPIRIT OF YOSEMITE



Don't miss this award-winning film! Shown free of charge every 30 minutes at the Yosemite Valley Visitor Center Theater



Yosemite Valley Shuttle Bus Map



Use the Free Yosemite Valley Shuttle System

VALLEY VISITOR SHUTTLE BUS
7:00 a.m. - 10:00 p.m.

Shuttle buses operate daily at 30-minute intervals. Times are posted at each stop. All buses follow the same route, serving stops in numerical order. Shuttle bus service may be affected by construction projects. Check bus stops for more information.

YOSEMITE AREA REGIONAL TRANSPORTATION SYSTEM

YARTS YARTS bus stops are located in Yosemite Valley at The Ahwahnee, Curry Village, Valley Visitor Center, and Yosemite Lodge. For bus schedules to and from the Yosemite area, call 1-877-98-YARTS, or visit YARTS online at www.yarts.com.

- | | | |
|--|---|--|
| 1 Yosemite Village / Day Parking | 8 Yosemite Lodge | 14 Curry Village Parking |
| 2 Yosemite Village | 9 Valley Visitor Center | 15 Upper Pines Campground
<i>Closed for season</i> |
| 3 The Ahwahnee | 10 Yosemite Village | 16 Happy Isles / John Muir Trailhead
<i>Closed for season</i> |
| 4 Yosemite Village / Degnan's Complex | 11 Sentinel Bridge / Yosemite Chapel | 17 Mirror Lake Junction
<i>Closed for season</i> |
| 5 Valley Visitor Center | 12 Housekeeping Camp / LeConte Memorial Lodge | 18 Stable
<i>Closed for season</i> |
| 6 Lower Yosemite Fall | 13A Curry Village Rental Center | 19 Lower Pines Campground |
| 7 Camp 4 / Upper Yosemite Fall Trailhead | 13B Curry Village Registration Desk | 20 Curry Village Parking |
| | | 21 Curry Village Rental Center |

Scheduled Events

Programs printed in color are especially for children and their families.

NPS = National Park Service

DNC = DNC Parks & Resorts at Yosemite, Inc.

AAG = The Ansel Adams Gallery

S = Programs offered for a fee



Indicates facilities accessible to visitors in wheelchairs. Short steep inclines may be encountered.

	SUNDAY	MONDAY	TUESDAY	WEDNESDAY
Yosemite Valley	<p>9:00am WEE WILD ONES (February 11 and 25 only) 45 min. Stories and activities for kids 6 and under. Ahwahnee Great Lounge fireplace (DNC) ♿</p> <p>2:00pm Ranger Stroll—Rivers and Waterfalls 1½ hrs. Front of Valley Visitor Center (NPS)</p> <p>7:00pm Winter Theater Live! The Spirit of John Muir: Stories of Ice and Snow (February 18 only) 1 hr. Yosemite Lodge Cliff Room Tickets at tour desk or at door, if available (DNC) \$ ♿</p> <p>Film - Ansel Adams 1 hr. Check local postings for venue (AAG) ♿</p>	<p>2:00pm Ranger Stroll—Yosemite's First People 1½ hrs. Front of Yosemite Museum (NPS)</p> <p>7:00pm Winter Theater Live! The Spirit of John Muir: Stories of Ice and Snow (February 19 only) 1 hr. Yosemite Lodge Cliff Room Tickets at tour desk or at door, if available (DNC) \$ ♿</p> <p>Evening Program 1 hr. Check local postings for venue and topic (DNC/NPS) ♿</p>	<p>9:00am Photography Walk 2 hrs. Limited space. Reservations required Sign up/meet at The Ansel Adams Gallery Conditions permitting (AAG)</p> <p>Noon Yosemite Forum - Research and Planning in Tuolumne (February 6 only) 2 hrs. Valley Visitor Center Auditorium (NPS) ♿</p> <p>2:00pm Ranger Stroll—A Changing Yosemite 1½ hrs. Front of Valley Visitor Center (NPS)</p> <p>7:00pm FIRESIDE STORYTELLING FOR ALL AGES (except January 30 and February 27) 1 hr. Ahwahnee Great Lounge fireplace (DNC) ♿</p> <p>Evening Program 1 hr. Check local postings for venue and topic (DNC/NPS) ♿</p>	<p>9:00am WEE WILD ONES (except January 11 and 25 only) 45 min. Stories and activities for kids 6 and under. Ahwahnee Great Lounge fireplace (DNC) ♿</p> <p>1:00pm NPS Open House (January 31 only) 4 hrs. Come improve Yosemite! Valley Visitor Center Auditorium (NPS)</p> <p>2:00pm Ranger Stroll—A Changing Yosemite 1½ hrs. Front of Valley Visitor Center (NPS)</p> <p>7:00pm Evening Program 1 hr. Check local postings for venue and topic (DNC/NPS) ♿</p>
Badger Pass	<p>10:30am Ranger Snowshoe Walk 2 hrs. See details below (NPS) \$</p>	<p>10:30am Ranger Snowshoe Walk 2 hrs. See details below (NPS) \$</p> <p>6:30pm Full Moon Snowshoe Walk (January 29 only) 2 hrs. No experience required. See details below. Advance sign-up at tour desk. Badger Pass Lodge (DNC) \$</p>	<p>10:30am Ranger Snowshoe Walk 2 hrs. See details below (NPS) \$</p> <p>6:30pm Full Moon Snowshoe Walk (January 30 and February 27 only) 2 hrs. No experience required. See details below. Advance sign-up at tour desk. Badger Pass Lodge (DNC) \$</p>	<p>10:30am Ranger Snowshoe Walk 2 hrs. See details below (NPS) \$</p> <p>6:30pm Full Moon Snowshoe Walk (January 31 only) 2 hrs. No experience required. See details below. Advance sign-up at tour desk. Badger Pass Lodge (DNC) \$</p>



On Top

Oil painting by Joan Hoffmann

Winter Family Celebration

FEBRUARY 17

1:00 p.m. - 4:00 p.m.

Curry Village Guest Lounge

Join park interpretive staff for an afternoon of crafts, learning stations, walks, and winter fun!

Yosemite Winter Theater

THE SPIRIT OF JOHN MUIR:
STORIES OF ICE AND SNOW

7:00 p.m. FEBRUARY 18 & 19

1hr. Yosemite Lodge Cliff Room

Actor Lee Stetson portrays John Muir as he delights audiences with tales of Muir's daring winter adventures.

Tickets may be purchased in advance from the Yosemite Lodge tour desk, or if seating is available, at the door. ♿

Outdoor Adventures with the Yosemite Association

These programs are offered for a fee, part of which supports other interpretation and education programs in Yosemite.

Winter Landscape Photography with John Senser JANUARY 25-28

Full Moon Snowshoe with Karen Amstutz FEBRUARY 2

Full Moon Snowshoe with Emily Jacobs FEBRUARY 3

Winter Ecology Weekend with Roger McGeehee FEBRUARY 10-11

A Writers' Winter Walk with Beth Pratt FEBRUARY 17

Discovering the Valley in Winter with Dick Ewart FEBRUARY 24

Discovering Winter at Badger Pass with Dick Ewart FEBRUARY 25

For details, call the Yosemite Association at 209/379-2321, visit www.yosemite.org, or check at the Valley Visitor Center.

Yosemite Valley

AMERICA'S BEST IDEA

UNIQUE IMAGES FROM ALL 58 NATIONAL PARKS

Yosemite Museum Through January 28

Enjoy this beautiful photographic display of all 58 national parks from the recently published book, *America's Best Idea — A Photographic Journey Through Our National Parks*.

YOSEMITE RENAISSANCE XXII ANNUAL ART COMPETITION PRIZEWINNERS

Opening reception: February 23, 5:30 p.m. to 7:30 p.m.

Yosemite Museum February 24 through May 6

Contemporary fine-art interpretations of the human and natural landscape of Yosemite and the Sierra Nevada are featured in this competitive exhibition sponsored for 22 years by Yosemite Renaissance, a nonprofit organization supporting the arts of Yosemite.

Valley Visitor Center and Bookstore

Open 9:00 a.m. to 5:00 p.m. and located in Yosemite Village just west of the main post office (shuttle stops #5 and #9), the visitor center offers information, maps and books. ♿ TTY

The exhibit hall of the visitor center is being renovated and will be closed until May.

FILM

Spirit of Yosemite

This inspiring visitor-orientation film provides a stunning overview of Yosemite's splendor. It is shown every 30 minutes Monday through Saturday 9:30 a.m. to 4:30 p.m., and Sunday noon to 4:30 p.m. in the Valley Visitor Center Theater. ♿

Yosemite Cemetery

This historic cemetery is located across the street just west of the Yosemite Museum. People buried here include American Indians and others who played an important role in the development of what is now Yosemite National Park. *Guide to the Yosemite Cemetery* is available at the Valley Visitor Center.

The Indian Village of Ahwahnee

Located behind the Yosemite Museum and open during daylight hours, the village offers exhibits on Ahwahneechee life. ♿

Yosemite Museum

Located in Yosemite Village next to the Valley Visitor Center. ♿

FEATURES

Museum Gallery The gallery offers a variety of exhibits. See details at left.

America's Best Idea Through January 28

Open 9:00 a.m. to 4:30 p.m. (closed for lunch).

Yosemite Renaissance XXII February 24 through May 6

Open Friday - Monday 10:00 a.m. to noon and 1:00 p.m. to 4:00 p.m.

Indian Cultural Exhibit

Open 9:00 a.m. to 4:30 p.m. (closed for lunch), the exhibit interprets the cultural history of Yosemite's native Miwok and Paiute people from 1850 to the present. Demonstrations of traditional skills are presented. No food or drink permitted.

Yosemite Museum Store

Open 9:00 a.m. to 4:30 p.m., the store offers traditional American Indian arts and crafts and books on related subjects.

The Ansel Adams Gallery

Located in Yosemite Village next to the Valley Visitor Center and open daily from 9:00 a.m. to 5:00 p.m., the gallery offers the work of Ansel Adams, contemporary photographers, and other fine artists. In addition, handcrafts, books, gifts, digital services, and photography supplies are available. Scheduled activities are listed on the front porch. For more information, call 209/372-4413, or visit www.anseladams.com.

February 1 - 27: Ansel Adams

On display are original photographs by Adams, in honor and celebration of his birthday, February 20. Special events and camera walks are scheduled for February 17 and 18. Please contact the gallery for more details.

January 24 - February 27, 2007

WEDNESDAY	THURSDAY	FRIDAY	SATURDAY
<p>PROGRAMS January 24 and 31) Activities and programs for kids 6 and under. Ahwahnee Great Lounge fireplace.</p> <p>House Only) and learn about park efforts. Valley Visitor Center (NPS) &</p> <p>Roll—Geology t of Valley Visitor Center (NPS)</p> <p>rogram ocal postings for venue and (NPS) &</p>	<p>9:00am Photography Walk 2 hrs. Limited space. Reservations required Sign up/meet at The Ansel Adams Gallery Conditions permitting (AAG)</p> <p>2:00pm Ranger Stroll—Yosemite's Legacy 1½ hrs. Front of Valley Visitor Center (NPS)</p> <p>3:00pm STORY TIME (February 22 only) 30 min. Come hear Yosemite-related stories read aloud (for children 7 and under) Ahwahnee Great Lounge fireplace (DNC) &</p> <p>7:00pm Evening Program 1 hr. Check local postings for venue and topic (DNC/NPS) &</p>	<p>2:00pm Ranger Stroll—Wild About Wildlife 1½ hrs. Front of Valley Visitor Center (NPS)</p> <p>7:00pm Evening Program 1 hr. Check local postings for venue and topic (DNC/NPS) &</p>	<p>9:00am Photography Walk 2 hrs. Limited space. Reservations required Sign up/meet at The Ansel Adams Gallery Conditions permitting (AAG)</p> <p>1:00pm WINTER FAMILY CELEBRATION (February 17 only) 3 hrs. Curry Village Guest Lounge See details below (DNC/NPS) &</p> <p>2:00pm Ranger Stroll—Trees (except February 17) 1½ hrs. Ahwahnee Shuttle Stop #3 (NPS)</p> <p>3:00pm WINTER FAMILY WALK (February 24 only) 1 hr. Ahwahnee back lawn (DNC)</p> <p>Fine Print Viewing 1 hr. Very limited space Sign up in advance inside The Ansel Adams Gallery (AAG)</p> <p>4:00pm CHILDREN'S STORYTIME ½ hr. For children 7 and under (must be accompanied by an adult). Front of The Ansel Adams Gallery (at Degnan's Loft in inclement weather) (AAG)</p> <p>7:00pm Evening Program 1 hr. Check local postings for venue and topic (DNC/NPS) &</p>
<p>Snowshoe Walk etails below (NPS) \$</p> <p>Snowshoe Walk only) 2 hrs. No experience e details below. Advance sign-up Badger Pass Lodge (DNC) \$</p>	<p>10:30am Ranger Snowshoe Walk 2 hrs. See details below (NPS) \$</p> <p>6:30pm Full Moon Snowshoe Walk (February 1 only) 2 hrs. No experience required. See details below. Advance sign-up at tour desk. Badger Pass Lodge (DNC) \$</p>	<p>10:30am Ranger Snowshoe Walk 2 hrs. See details below (NPS) \$</p>	<p>10:30am Ranger Snowshoe Walk 2 hrs. See details below (NPS) \$</p>

Wawona

Pioneer Yosemite History Center

Go back to a time of horse-drawn wagons, a covered bridge, and log cabins. Visit the Pioneer Yosemite History Center, explore Yosemite's history, and learn how Yosemite was the inspiration for national parks across America and around the world. The center is always open, and interpretive signs and brochures are available. &

Badger Pass

Badger Pass Ski Area

Badger Pass, California's oldest operating ski area, is the center of Yosemite ski and snowboarding activity during the winter. It is located at 7,200 feet in elevation and is a one-hour drive from Yosemite Valley on the Glacier Point Road. There are 10 runs, three ski lifts, downhill and cross-country ski schools, ski rentals, and a day lodge. Cross-country skiers will find groomed and ungroomed trails that originate at Badger Pass; tracks are groomed on the Glacier Point Road all the way to Glacier Point. Wilderness permits are available at the Badger Pass A-frame. Call 209/372-1000 for ski conditions.

Badger Pass Bus

Ride the free bus to Badger Pass Ski Area. Road and weather conditions permitting, the bus leaves daily from Curry Village at 8:00 a.m. and 10:30 a.m., the Yosemite Transportation System office (next to the Yosemite Village Garage) at 8:10 a.m. and 10:40 a.m., The Ahwahnee at 8:15 a.m. and 10:45 a.m., and Yosemite Lodge at 8:30 a.m. and 11:00 a.m. Return buses leave Badger Pass at 2:00 p.m. and 4:00 p.m. Several buses operate on busy days. Allow at least one hour for a one-way trip. Additional information is available at hotel front desks.

Ranger Snowshoe Walk— Explore the Forest in Winter

Daily 10:30 a.m., conditions permitting

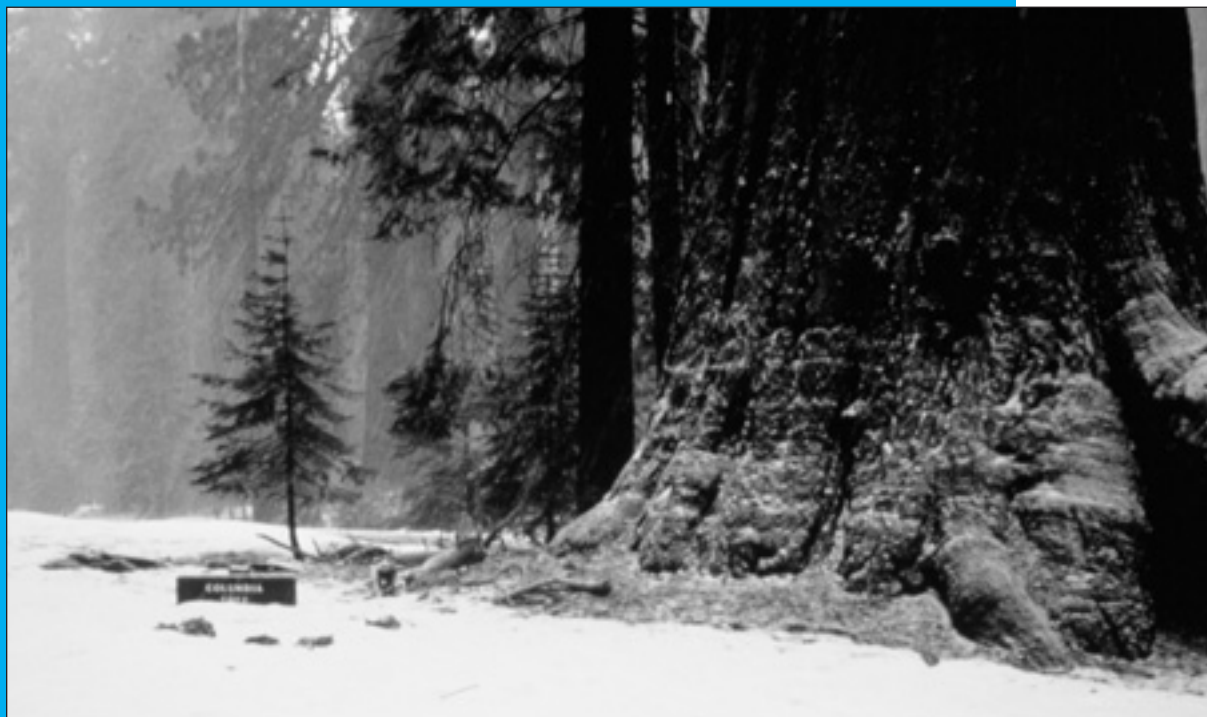
Enter the dazzling world of Yosemite winter with an expert naturalist. Join an NPS ranger at the Badger Pass A-frame for a moderate/strenuous two-hour walk (not recommended for children under 10 yrs.). Wear warm clothing and boots. Showshoes provided for a suggested donation of \$5.

Full Moon Snowshoe Walk

January 29 - February 1 and February 27
6:30 p.m., conditions permitting

Join an interpreter for a two- to three-mile walk in a moonlit winter wonderland. Watch the moon rise over majestic firs at Badger Pass. No experience necessary; however, this program is not recommended for children under 10, as it is moderately strenuous. Visit a tour desk, Badger Pass Lodge, or call 209/372-1240 for required advance reservations. Tickets are \$14.75 (snowshoes included), or \$5 (bring your own snowshoes).

Note: Ranger and Full Moon Snowshoe walks will be canceled if the Badger Pass Road closes, or if weather conditions are too severe.



Sequoia Groves in Winter

*Mariposa Grove of
Giant Sequoias
NPS Photo*

Mariposa Grove

Located at Yosemite's southernmost end, the Mariposa Grove is the park's largest stand of giant sequoias, with about 500 trees. Allow 1½ hours driving time from Yosemite Valley to reach the grove. A few giant sequoias are visible from the parking area. Trails into the grove extend uphill from the far end of the parking lot, and interpretive signs between the trailhead and the California Tree offer a self-guiding tour. Written translations in German, French, Spanish, and Japanese are available at the trailhead.

The access road to the grove closes during the winter. If the road is closed, the four-mile roundtrip walk from Yosemite's south entrance to the grove takes two to three hours (longer for hikes into the grove).

Trailers are prohibited on the Mariposa Grove Road.

Tuolumne Grove

This cluster of about 25 sequoias is near Crane Flat at the intersection of Big Oak Flat and Tioga roads. Walk one mile (with a 500-ft. drop in elevation) into the grove along the former route of the Big Oak Flat Road, now closed to cars. The trip is moderately strenuous on the uphill return. Within the Tuolumne Grove there is an easy, half-mile, self-guiding nature trail.

Merced Grove

Yosemite's quietest stand of sequoias is the Merced Grove, a group of about 20 trees accessible only on foot. It's a four-mile roundtrip hike or ski (about three hours) into the grove from Big Oak Flat Road (Highway 120 West). Located 3½ miles north of Crane Flat and 4½ miles south of the Big Oak Flat Entrance, the trailhead is marked by a road sign and a post labeled B-10.

Yosemite Today

Published by the National Park Service, in cooperation with DNC Parks & Resorts at Yosemite, Inc.

Editor Carol Blaney
Design / Production Skip Gaynard Designs
Printing Casey Printing, Inc.

We're Interested . . .

We are always looking for ways to improve our visitor publications. You can help by sending your comments via e-mail to Carol_Blaney@nps.gov or fax to 209/372-0617.

