



Experience Your America

Yosemite Today

February 28 - April 3, 2007

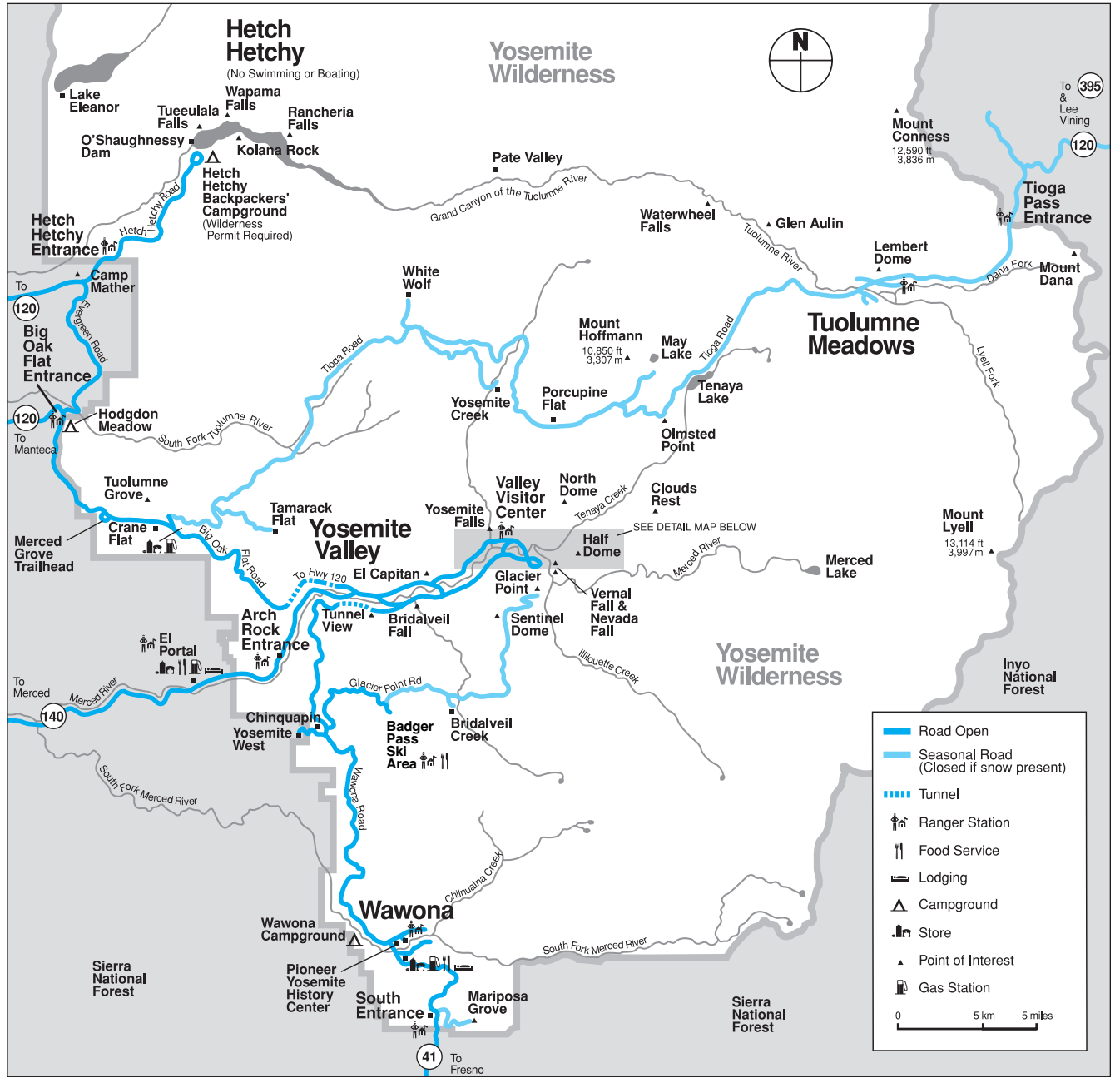
Yosemite National Park

ROAD INFO

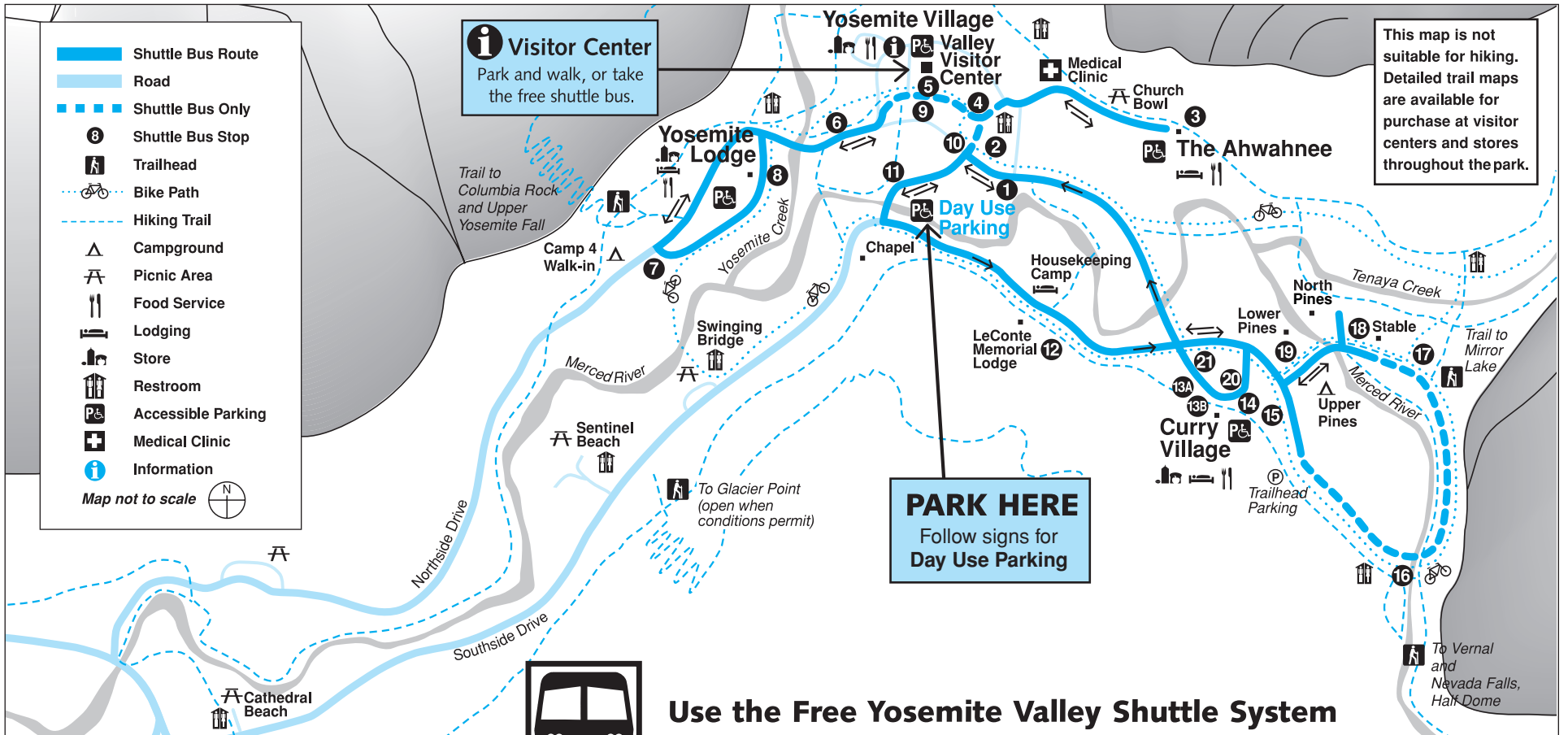
Construction may cause short delays or detours on some park roads. Call 209/372-0200 for recorded road information.

SPIRIT OF YOSEMITE

Don't miss this award-winning film! Shown free of charge every 30 minutes at the Yosemite Valley Visitor Center Theater



Yosemite Valley Shuttle Bus Map



YOSEMITE AREA REGIONAL TRANSPORTATION SYSTEM
YARTS bus stops are located in Yosemite Valley at The Ahwahnee, Curry Village, Valley Visitor Center, and Yosemite Lodge. For bus schedules to and from the Yosemite area, call 1-877-98-YARTS, or visit YARTS online at www.yarts.com.

- Use the Free Yosemite Valley Shuttle System**
VALLEY VISITOR SHUTTLE BUS
7:00 a.m. - 10:00 p.m.
- Shuttle buses operate daily at 30-minute intervals. Times are posted at each stop. All buses follow the same route, serving stops in numerical order. Shuttle bus service may be affected by construction projects. Check bus stops for more information.
- | | | |
|--|---|---------------------------------------|
| 1 Yosemite Village / Day Parking | 9 Valley Visitor Center | 15 Upper Pines Campground* |
| 2 Yosemite Village | 10 Yosemite Village | 16 Happy Isles / John Muir Trailhead* |
| 3 The Ahwahnee | 11 Sentinel Bridge / Yosemite Chapel | 17 Mirror Lake Junction* |
| 4 Yosemite Village / Degnan's Complex | 12 Housekeeping Camp / LeConte Memorial Lodge | 18 Stable* |
| 5 Valley Visitor Center | 13A Curry Village Rental Center | 19 Lower Pines Campground |
| 6 Lower Yosemite Fall | 13B Curry Village Registration Desk | 20 Curry Village Parking |
| 7 Camp 4 / Upper Yosemite Fall Trailhead | 14 Curry Village Parking | 21 Curry Village Rental Center |
| 8 Yosemite Lodge | | |
- *No service to these stops after the season's first major snowstorm

February 28 - April 3, 2007

WEDNESDAY

YOUNG ONES
(February 28)
Games and activities for kids 6 and under. Ahwahnee Great Lounge fireplace.

House
(March 29 only)
Learn about park preservation efforts. Valley Visitor Center (NPS) &

Geology
(March 29 only)
Valley Visitor Center (NPS)

Program
(March 29 only)
Local postings for venue and topic (DNC/NPS) &

THURSDAY

9:00am **Photography Walk**
2 hrs. Limited space. Reservations required. Sign up/meet at The Ansel Adams Gallery. Conditions permitting (AAG)

2:00pm **Ranger Stroll—Yosemite's Legacy**
1½ hrs. Front of Valley Visitor Center (NPS)

5:30pm **Twilight Stroll**
(March 29 only)
1 hr. Ahwahnee back lawn (DNC)

7:30pm **FIRESIDE STORYTELLING FOR ALL AGES**
(except March 29)
1 hr. Ahwahnee Great Lounge fireplace (DNC) &

Evening Program
1 hr. Check local postings for venue and topic (DNC/NPS) &

FRIDAY

10:00am **Art Class**
(March 30 only)
4 hrs. Yosemite Art and Education Center. See details below (YA)

1:00pm **NPS Open House**
(March 30 only)
4 hrs. Come and learn about park improvement efforts. Valley Visitor Center Auditorium (NPS) &

2:00pm **Ranger Stroll—Wild About Wildlife**
1½ hrs. Front of Valley Visitor Center (NPS)

7:00pm **Evening Program**
1 hr. Check local postings for venue and topic (DNC/NPS) &

SATURDAY

9:00am **Photography Walk**
2 hrs. Limited space. Reservations required. Sign up/meet at The Ansel Adams Gallery. Conditions permitting (AAG)

10:00am **Art Class**
(March 31 only)
4 hrs. Yosemite Art and Education Center. See details below (YA)

2:00pm **Ranger Stroll—Trees**
1½ hrs. Ahwahnee Shuttle Stop #3 (NPS)

3:00pm **Fine Print Viewing**
1 hr. Very limited space. Sign up in advance inside The Ansel Adams Gallery (AAG)

4:00pm **CHILDREN'S STORYTIME**
½ hr. For children 7 and under (must be accompanied by an adult). Front of The Ansel Adams Gallery (at Degnan's Loft in inclement weather) (AAG)

7:30pm **Evening Program**
1 hr. Check local postings for venue and topic (DNC/NPS) &

Snowshoe Walk
(March 28 only)
Details below (NPS) \$

Snowshoe Walk
(March 29 only)
Experience required. See details below. Advance sign-up at tour desk. Badger Pass Lodge (DNC) \$

10:30am **Ranger Snowshoe Walk**
2 hrs. See details below (NPS) \$

6:30pm **Full Moon Snowshoe Walk**
(March 1 only)
2 hrs. No experience required. See details below. Advance sign-up at tour desk. Badger Pass Lodge (DNC) \$

10:30am **Ranger Snowshoe Walk**
2 hrs. See details below (NPS) \$

6:30pm **Full Moon Snowshoe Walk**
(March 2 and 30 only)
2 hrs. No experience required. See details below. Advance sign up at tour desk. Badger Pass Lodge (DNC) \$

10:30am **Ranger Snowshoe Walk**
2 hrs. See details below (NPS) \$

6:30pm **Full Moon Snowshoe Walk**
(March 3 and 31 only)
2 hrs. No experience required. See details below. Advance sign up at tour desk. Badger Pass Lodge (DNC) \$

Wawona

Pioneer Yosemite History Center

Go back to a time of horse-drawn wagons, a covered bridge, and log cabins. Visit the Pioneer Yosemite History Center, explore Yosemite's history, and learn how Yosemite was the inspiration for national parks across America and around the world. The center is always open, and interpretive signs and brochures are available. &

Badger Pass

Badger Pass Ski Area

Closes for season April 1

Badger Pass, California's oldest operating ski area, is the center of Yosemite ski and snowboarding activity during the winter. It is located at 7,200 feet in elevation and is a one-hour drive from Yosemite Valley on the Glacier Point Road. There are 10 runs, three ski lifts, downhill and cross-country ski schools, ski rentals, and a day lodge. Cross-country skiers will find groomed and ungroomed trails that originate at Badger Pass; tracks are groomed on the Glacier Point Road all the way to Glacier Point. Wilderness permits are available at the Badger Pass A-frame. Call 209/372-1000 for ski conditions.

Badger Pass Bus

Ends for the season April 1

Ride the free bus to Badger Pass Ski Area. Road and weather conditions permitting, the bus leaves daily from Curry Village at 8:00 a.m. and 10:30 a.m., the Yosemite Transportation System office (next to the Yosemite Village Garage) at 8:10 a.m. and 10:40 a.m., The Ahwahnee at 8:15 a.m. and 10:45 a.m., and Yosemite Lodge at 8:30 a.m. and 11:00 a.m. Return buses leave Badger Pass at 2:00 p.m. and 4:00 p.m. Several buses operate on busy days. Allow at least one hour for a one-way trip. Additional information is available at hotel front desks.

Ranger Snowshoe Walk— Explore the Forest in Winter

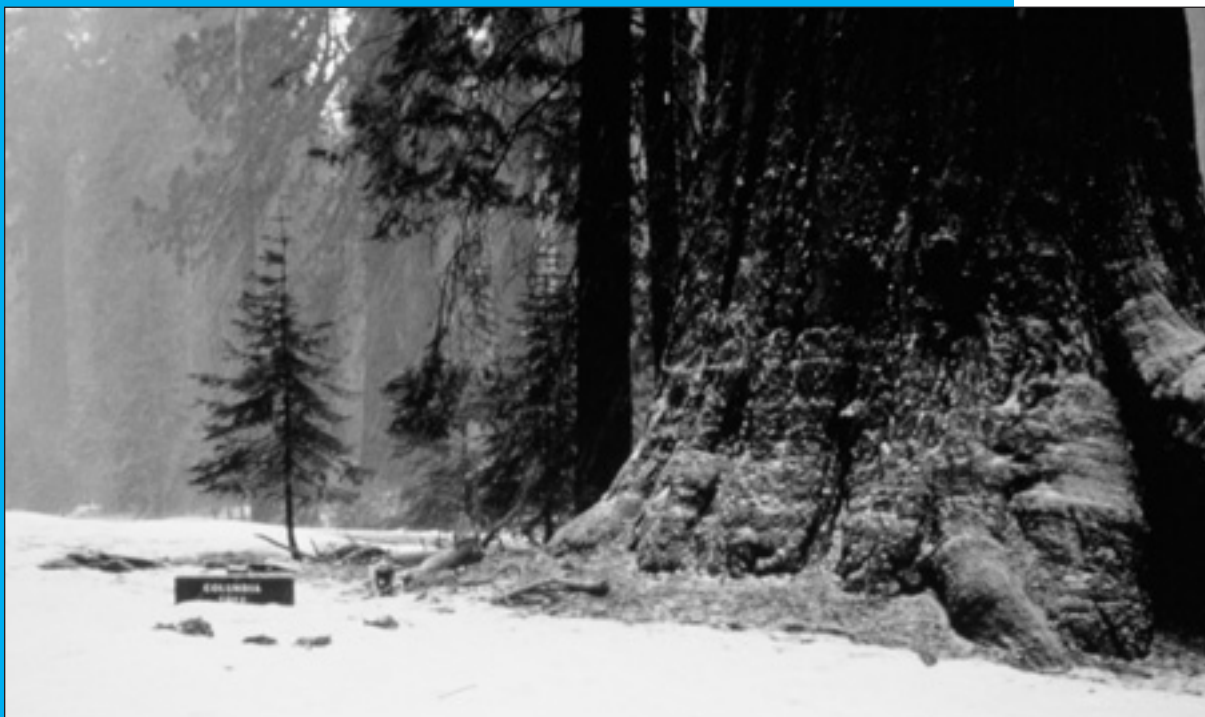
Daily 10:30 a.m., conditions permitting

Ends for the season April 1
Enter the dazzling world of Yosemite winter with an expert naturalist. Join an NPS ranger at the Badger Pass A-frame for a moderate/strenuous two-hour walk (not recommended for children under 10 yrs.). Wear warm clothing and boots. Showshoes provided for a suggested donation of \$5.

Full Moon Snowshoe Walk

**February 28 - March 3 and March 30 - 31
6:30 p.m., conditions permitting**
Join an interpreter for a two- to three-mile walk in a moonlit winter wonderland. Watch the moon rise over majestic firs at Badger Pass. No experience necessary; however, this program is not recommended for children under 10, as it is moderately strenuous. Visit a tour desk, Badger Pass Lodge, or call 209/372-1240 for required advance reservations. Tickets are \$14.75 (snowshoes included), or \$5 (bring your own snowshoes).

Note: Ranger and Full Moon Snowshoe walks will be canceled if the Badger Pass Road closes, or if weather conditions are too severe.



Sequoia Groves in Winter

*Mariposa Grove of
Giant Sequoias
NPS Photo*

Mariposa Grove

Located at Yosemite's southernmost end, the Mariposa Grove is the park's largest stand of giant sequoias, with about 500 trees. Allow 1½ hours driving time from Yosemite Valley to reach the grove. A few giant sequoias are visible from the parking area. Trails into the grove extend uphill from the far end of the parking lot, and interpretive signs between the trailhead and the California Tree offer a self-guiding tour. Written translations in German, French, Spanish, and Japanese are available at the trailhead.

The access road to the grove closes during the winter. If the road is closed, the four-mile roundtrip walk from Yosemite's south entrance to the grove takes two to three hours (longer for hikes into the grove).

Trailers are prohibited on the Mariposa Grove Road.

Tuolumne Grove

This cluster of about 25 sequoias is near Crane Flat at the intersection of Big Oak Flat and Tioga roads. Walk one mile (with a 500-ft. drop in elevation) into the grove along the former route of the Big Oak Flat Road, now closed to cars. The trip is moderately strenuous on the uphill return. Within the Tuolumne Grove there is an easy, half-mile, self-guiding nature trail.

Merced Grove

Yosemite's quietest stand of sequoias is the Merced Grove, a group of about 20 trees accessible only on foot. It's a four-mile roundtrip hike or ski (about three hours) into the grove from Big Oak Flat Road (Highway 120 West). Located 3½ miles north of Crane Flat and 4½ miles south of the Big Oak Flat Entrance, the trailhead is marked by a road sign and a post labeled B-10.

Yosemite Today

Published by the National Park Service, in cooperation with DNC Parks & Resorts at Yosemite, Inc.

Editor Carol Blaney
Design / Production Skip Gaynard Designs
Printing Casey Printing, Inc.

We're Interested . . .

We are always looking for ways to improve our visitor publications. You can help by sending your comments via e-mail to Carol_Blaney@nps.gov or fax to 209/372-0617.

Park Facilities and Services



ATM

Yosemite Village

South of Village Store (Bank of America)
Inside Village Store

Yosemite Lodge Inside main registration area

Curry Village Inside gift/grocery store

Wawona Inside Wawona Store

El Portal

On Highway 140 at the Yosemite View Lodge and the El Portal Market.

Babysitting

Limited babysitting is available for registered guests at Yosemite Lodge and The Ahwahnee. Call front desk or concierge for additional information.

Food & Beverage Services

These hours of operation are approximate. Current hours of operation are posted at each front desk or facility.

BADGER PASS

Closes for season April 1

Skiers Grill 8:30 a.m. to 4:00 p.m.

Snowflake Room

Saturday, Sunday & holidays 11:00 a.m. to 4:00 p.m.

YOSEMITE VILLAGE

Degnan's Delicatessen 7:00 a.m. to 5:00 p.m.

Degnan's Loft

Opens for season April 2

Friday 5:00 p.m. to 9:00 p.m.

Saturday - Sunday noon to 9:00 p.m.

Village Grill

Opens for season April 2

11:00 a.m. to 5:00 p.m.

YOSEMITE LODGE

Coffee Corner 6:30 a.m. to noon

Food Court

Breakfast 6:30 a.m. to 11:00 a.m.

Lunch 11:30 a.m. to 2:00 p.m.

Dinner 5:00 p.m. to 7:30 p.m.

Mountain Room Lounge

Monday - Friday 4:30 p.m. to 11:00 p.m.

Saturday - Sunday noon to 11:00 p.m.

Mountain Room Restaurant

5:00 p.m. to 8:30 p.m.

April 8 Easter Brunch 10:00 a.m. to 1:00 p.m.

Reservations are recommended. 209/372-1281

THE AHWAHNEE

Dining Room

Breakfast 7:00 a.m. to 10:30 a.m.

Lunch 11:30 a.m. to 3:00 p.m.

Dinner 5:30 p.m. to 9:00 p.m.

Sunday Brunch 7:00 a.m. to 3:00 p.m.

Appropriate attire is respectfully requested for dinner. Reservations are recommended for all meals and required for dinner. 209/372-1489

The Ahwahnee Bar

11:00 a.m. to 11:00 p.m. Food service available

CURRY VILLAGE

Coffee Corner

Saturday - Sunday 7:00 a.m. to 11:00 a.m.

Open daily beginning March 31

Pizza Deck

Friday 5:00 p.m. to 9:00 p.m.

Saturday noon to 9:00 p.m.

Beginning March 30

Monday - Friday 5:00 p.m. to 9:00 p.m.

Saturday - Sunday noon to 9:00 p.m.

Pavillion Buffet

Opens for season with dinner March 30

Breakfast 7:00 a.m. to 10:00 a.m.

Dinner 5:30 p.m. to 8:00 p.m.

Curry Village Bar

Opens for season March 30

5:00 p.m. to 9:00 p.m.

WAWONA HOTEL

Dining Room

Open March 2 (dinner) - March 4 (breakfast)

& March 9 (dinner) - March 11 (breakfast)

& March 16 (dinner) - March 18 (breakfast)

& March 23 (dinner) - March 25 (breakfast)

Open daily beginning with dinner March 30

Breakfast 7:30 a.m. to 10:00 a.m.

Lunch 11:30 a.m. to 1:30 p.m.

Dinner 5:30 p.m. to 9:00 p.m.

Reservations taken for 8 or more. 209/375-1425

Guest Lounge 5:00 p.m. to 9:30 p.m.

Gifts, Books & Apparel

YOSEMITE VILLAGE

The Ansel Adams Gallery

9:00 a.m. to 5:00 p.m.

Yosemite Bookstore

9:00 a.m. to 5:00 p.m. Inside Valley Visitor Center

Yosemite Museum Store

9:00 a.m. to 4:30 p.m.

Village Store 8:00 a.m. to 8:00 p.m.

Habitat Yosemite

Thursday - Monday 9:00 a.m. to 5:00 p.m.

Sport Shop 9:00 a.m. to 5:00 p.m.

Yosemite Art and Education Center

Opens for season March 30

9:00 a.m. to noon, 1:00 p.m. to 4:30 p.m.

YOSEMITE LODGE

Gift/Grocery 8:00 a.m. to 8:00 p.m.

Nature Shop 10:00 a.m. to 6:00 p.m.

THE AHWAHNEE

Gift Shop 8:00 a.m. to 9:00 p.m.

Sweet Shop 7:00 a.m. to 10:00 p.m.

CURRY VILLAGE

Mountain Shop 9:00 a.m. to 5:30 p.m.

Gift/Grocery 9:00 a.m. to 7:00 p.m.

WAWONA

Wawona Store & Pioneer Gift Shop

8:00 a.m. to 6:00 p.m.

BADGER PASS

Closes for season April 1

Sport Shop

9:00 a.m. to 4:00 p.m.

Groceries

Yosemite Lodge Gift/Grocery

8:00 a.m. to 8:00 p.m.

Village Store 8:00 a.m. to 8:00 p.m.

Degnan's Delicatessen 7:00 a.m. to 5:00 p.m.

Crane Flat Grocery

9:00 a.m. to 5:00 p.m.

Curry Village Gift/Grocery

9:00 a.m. to 7:00 p.m.

Wawona Store & Pioneer Gift Shop

8:00 a.m. to 6:00 p.m.

El Portal Market

9:00 a.m. to 7:00 p.m.

Showers & Laundromat

SHOWERS

Curry Village 24 hours

LAUNDROMAT

Housekeeping Camp 8:00 a.m. to 8:00 p.m.

Recycling

Yosemite Village Store Recycling Center

Tuesday, Thursday & Saturday Noon to 4:00 p.m.

Post Offices

Main Post Office - Yosemite Village

Monday - Friday 8:30 a.m. to 5:00 p.m.

Saturday 10:00 a.m. to noon

Yosemite Lodge Post Office

Monday - Friday 11:30 a.m. to 2:45 p.m.

Wawona Post Office

Monday - Friday 9:00 a.m. to 5:00 p.m.

Saturday 9:00 a.m. to noon

El Portal Post Office

Monday - Friday 8:30 a.m. to 12:30 p.m.,

1:30 p.m. to 5:00 p.m.

Gas Stations

Wawona

9:00 a.m. to 6:00 p.m. Diesel & propane available.

Pay at the pump 24 hours with credit or debit card.

Crane Flat

Pay at the pump 24 hours with credit or debit card.

El Portal

8:00 a.m. to noon, 1:00 p.m. to 5:00 p.m. Diesel available.

Pay at the pump 24 hours with credit or debit card.

Auto Service, Towing, and Repair (AAA)

Village Garage

8:00 a.m. to noon, 1:00 p.m. to 5:00 p.m.

Towing 24 hours. Propane available until 4:00 p.m.

209/372-8320

Internet Access

Internet access is available to park visitors at three locations: Yosemite Lodge, Degnan's Deli, and the Mariposa County Library (Girls Club), south of the Yosemite Cemetery. Access at the library is free, requires a sign-up and is available during limited hours Monday through Thursday (check at library for details). At Yosemite Lodge, kiosks and wireless access are available 24 hours for a fee. At Degnan's Deli, kiosks are available 7:00 a.m. to 5:00 p.m. for a fee.

Service Organizations

Al-Anon 7:00 p.m. Wednesday

DNC General Office Building
(Executive Conference Room) Yosemite Village

Alcoholics Anonymous

7:30 p.m. Sunday, Tuesday, and Thursday

DNC General Office Building

(Employee Training Center) Yosemite Village

Lions Club

Meets the first and third Thursdays of each month at noon, The Ahwahnee. Call 209/372-4475 for information.

Rotary International

Meets Thursdays for lunch at noon in

The Ahwahnee Mural Room. Visiting Rotarian

families and guests welcome. For meeting

reservations or information, call 209/372-8459.

Religious Services

YOSEMITE COMMUNITY CHURCH

(Nondenominational Christian)

Pastor Brent Moore 209/372-4831

Various Bible Studies during the week.

Counseling provided. Call pastor for appointment.

Worship Services/Yosemite Valley Chapel

Sunday 9:15 a.m. (Sunday School and

Nursery available)

Sunday 6:30 p.m. (no child care)

Tuesday Women's Bible Study 6:30 p.m.

Call for location

Tuesday Men's Bible Study, 7:00 p.m.

Thursday 7:00 p.m. (no child care)

March 24, Free concert by Long Beach City

College Choir 7:00 p.m. to 8:00 p.m.

ROMAN CATHOLIC

Rev. Raymond J. Duffy 209/372-4729

Mass in Yosemite Valley

Yosemite Valley Visitor Center Theater

Sunday 10:00 a.m.

CHURCH OF CHRIST

Ron Skelton 209/379-2307

El Portal Chapel/Worship Service Sunday 9:00 a.m.

CROSSWAY TRIBE OF JESUS

(Christian Protestant)

Pastor Steve Hughes 209/379-2428

Worship Gathering

Wednesday 7:00 p.m.

Mariposa County Library/Girls Club

General Park Information

Emergency 911

Fire - Police - Medical Emergency:
Dial 911, 24 hours a day (from hotel room 9-911)

Park Information

Road, Weather, and

General Park Information

209/372-0200 www.nps.gov/yose

Park Partner Information

www.yosemitepartners.org

Medical

Yosemite Medical Clinic

Emergency care: 24 hours daily

Drop-in and urgent care: 8:00 a.m. to 7:00 p.m.

Appointments

8:00 a.m. to 5:00 p.m. Monday - Friday

Located on Ahwahnee Drive in Yosemite Valley, the clinic provides routine and emergency medical care, 24-hour paramedic/ambulance services, limited pharmacy, lab, x-ray, physical therapy, and Mountain Crisis Services for victims of domestic violence. 209/372-4637

PAD Program

Yosemite's Public Access Defibrillation (PAD)

Program is designed to protect park visitors and staff from sudden cardiac arrest. All automated external defibrillator (AED) cabinets have been placed in high visitor-use locations and are open and accessible to anyone in the event of a medical emergency. For more information about the PAD Program, contact the Yosemite Medical Clinic.

AEDs can be found at the following locations: Village Store (Yosemite Village); registration desks at Yosemite Lodge, Curry Village, The Ahwahnee, and the Wawona Hotel; Crane Flat Store; Badger Pass Lodge (winter); and Glacier Point (summer).

Dental Services

Adjacent to Yosemite Medical Clinic. For hours, call 209/372-4200. If no answer, call 209/372-4637.

Weather Radio

The National Weather Service broadcasts weather information for Yosemite National Park 24 hours a day on NOAA Weather Radio station KAD-94, on a frequency of 162.450 MHz. Please note that reception may not be available in remote areas of the park.

Accommodations

For advance reservations or information (rooms or activities), call 559/252-4848, or visit www.YosemitePark.com. For availability on day of arrival, check at any front desk.

Camping

To make reservations for campsites in Yosemite, call the National Recreation Reservation Service at 877/444-6777 between 7:00 a.m. and 7:00 p.m. (until 9:00 p.m. beginning March 1), or check www.recreation.gov. For same-day reservations, visit Yosemite's Campground Reservation Office at the northeast corner of the Curry Village parking lot. First-come, first-served campsites are also available. See the *Yosemite Guide* for more details.

Accessible Services

The *Yosemite Accessibility Guide* is available at park entrance stations, visitor centers, and online at www.nps.gov/yose/access.

TTYs are available inside The Ahwahnee and Yosemite Lodge, and outside the Valley Visitor Center and Curry Village front desk.

A few accessible parking spaces are available just west of the Valley Visitor Center. To reach these, enter Yosemite Valley and pass the Yosemite Falls area. Turn left on Village Drive and follow the blue-and-white accessibility signs. Accessible parking spaces are on the right side of the road, next to the Yosemite Museum.

Bear Canister Rental

Canisters are available for \$5 per trip at the Valley Visitor Center Bookstore, the Wawona Store, and the Hetch Hetchy Entrance Station.

Wilderness Permits

Anyone going into Yosemite's backcountry must have a Wilderness permit. Self-register for permits at the Valley Visitor Center, Hill's Studio porch (near Wawona Hotel), Big Oak Flat Information Station, Hetch Hetchy Entrance Station, Tuolumne Meadows Ski Hut, or (until April 1) Badger Pass A-frame.

Recreation *Weather permitting*

YOSEMITE MOUNTAINEERING SCHOOL AND GUIDE SERVICE

Yosemite Mountaineering School and Guide Service offers lessons and guided climbing at all levels, overnight backpacking, and guided day hikes to spectacular areas of Yosemite Valley and the high country.

Curry Village 209/372-8344

Opens for season March 31

8:30 a.m. to noon, 1:00 p.m. to 5:00 p.m.

Badger Pass 209/372-8444

Closes for season April 1

8:30 a.m. to 4:00 p.m.

Located in cross-country ski area

BADGER PASS SKI AREA

Closes for season April 1

Rental shop, cross-country center, ski school,

and lift tickets: 8:30 a.m. to 4:00 p.m.

Ski lifts: 9:00 a.m. to 4:00 p.m.

Snow tubing: 11:30 a.m. to 1:30 p.m.,

2:00 p.m. to 4:00 p.m. *Conditions permitting*