



Experience Your America

Yosemite Today

November 7 - December 11, 2007

Yosemite National Park

ROAD INFO

Construction may cause short delays or detours on some park roads. Call 209/372-0200 for recorded road information.

OVERNIGHT PARKING

No overnight parking is permitted along Tioga Road or Glacier Point Road.

CHECK YOUR GAS GAUGE!

Crane Flat Gas Station will be closed until November 17 for system upgrades. Gasoline will not be available at this time.



Following are the nearest locations to Yosemite Valley where you may purchase fuel:

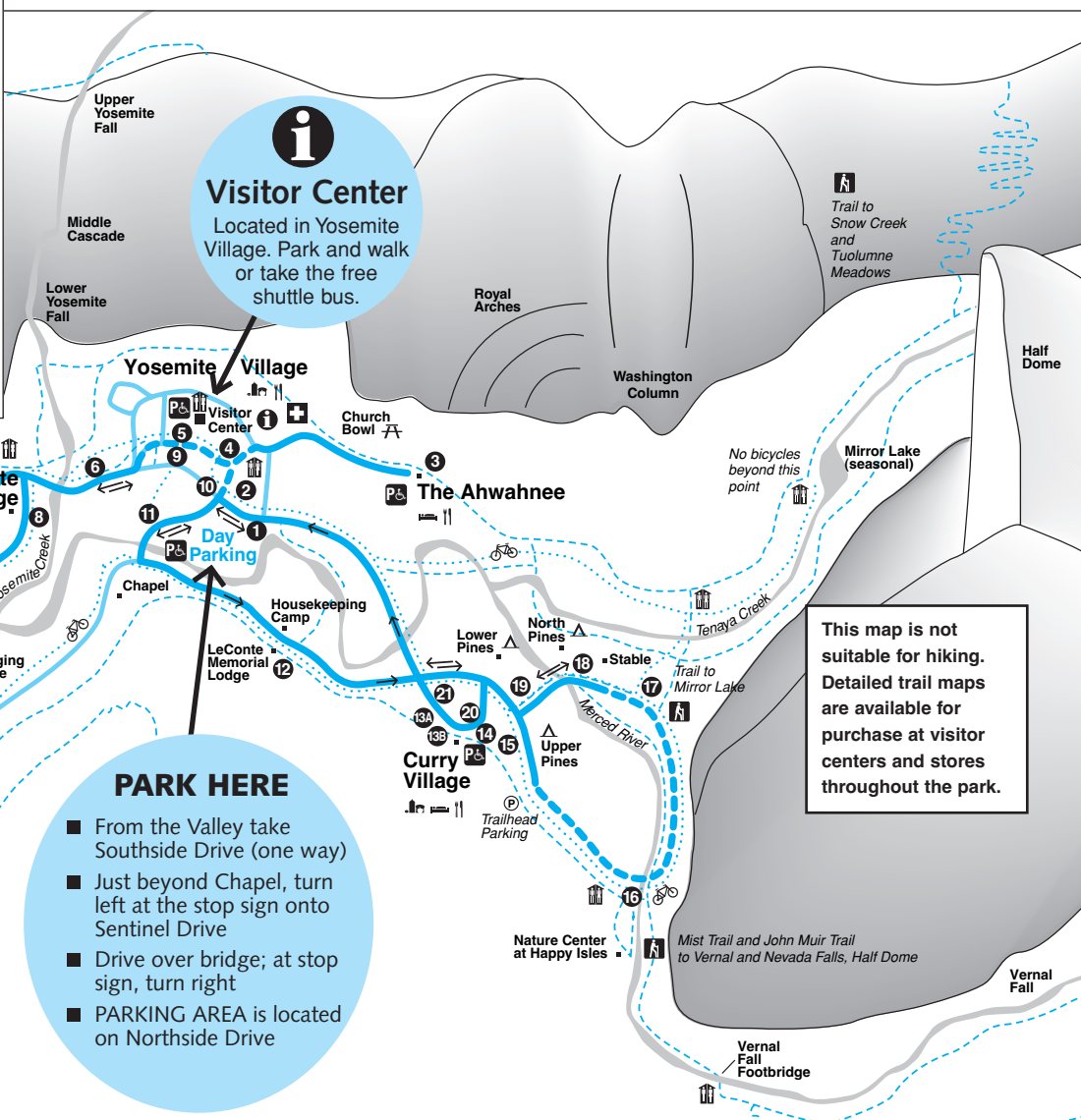
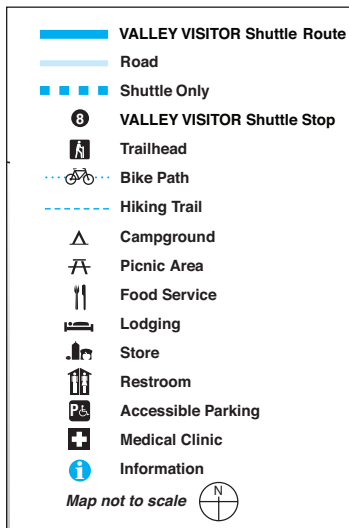
El Portal: Hwy 140 west toward Mariposa 14 miles

Wawona: Hwy 41 south toward Fresno 25 miles

ALL DISTANCES ARE CALCULATED FROM YOSEMITE VALLEY - PLAN AHEAD!



Yosemite Valley Shuttle Map



PARK HERE
From the Valley take Southside Drive (one way)
Just beyond Chapel, turn left at the stop sign onto Sentinel Drive
Drive over bridge; at stop sign, turn right
PARKING AREA is located on Northside Drive



Use the Free Yosemite Valley Shuttle System

Shuttles run daily every 10-20 minutes, depending on the time of day. Times are posted at each stop. All shuttles follow the same route, serving stops in numerical order. Shuttle service may be affected by construction projects. Check shuttle stops for more information.

VALLEY VISITOR SHUTTLE
7:00 a.m. - 10:00 p.m.

- 1 Yosemite Village / Day Parking
- 2 Yosemite Village
- 3 The Ahwahnee
- 4 Yosemite Village / Degnan's Complex
- 5 Valley Visitor Center
- 6 Lower Yosemite Fall
- 7 Camp 4/Upper Yosemite Fall Trailhead
- 8 Yosemite Lodge
- 9 Valley Visitor Center
- 10 Yosemite Village
- 11 Sentinel Bridge / Yosemite Chapel
- 12 Housekeeping Camp / LeConte Memorial Lodge
- 13A Curry Village Rental Center
- 13B Curry Village Registration Desk
- 14 Curry Village Parking
- 15 Upper Pines Campground*
- 16 Happy Isles / John Muir Trailhead*
- 17 Mirror Lake Junction*
- 18 Stable*
- 19 Lower Pines Campground
- 20 Curry Village Parking
- 21 Curry Village Rental Center

* Service to these locations stops after first major snowfall

YOSEMITE AREA REGIONAL TRANSPORTATION SYSTEM



YARTS bus stops are located in Yosemite Valley at The Ahwahnee, Curry Village, Valley Visitor Center, and Yosemite Lodge. For bus schedules to and from the Yosemite area, call 1-877-98-YARTS, or visit YARTS online at www.yarts.com.

Scheduled Events

Programs printed in color are especially for children and their families.

NPS = National Park Service
 DNC = Delaware North Companies at Yosemite
 AAG = The Ansel Adams Gallery
 YA = Yosemite Association
 \$ = Programs offered for a fee



Indicates facilities accessible for visitors in wheelchairs. Short steep inclines may be encountered.

	SUNDAY Nov. 11, 18, 25, Dec. 2 & 9	MONDAY Nov. 12, 19, 26, Dec. 3 & 10	TUESDAY Nov. 13, 20, 27, Dec. 4 & 11	WEDNESDAY Nov. 7, 14
Yosemite Valley	2:00pm Ranger Stroll – Merced Meanders 1½ hrs. Shuttle stop #11 (NPS) 7:30pm Evening Program 1 hr. Check local postings for venue and topic (DNC/NPS) &	2:00pm Ranger Stroll – Yosemite's First People (except December 3) 1½ hrs. Front of Yosemite Museum (NPS) & 7:30pm National Parks in the Sky – the Beauty of Our Universe 1 hr. Yosemite Lodge (NPS) &	9:00am Photography Walk 2 hrs. Limited space Reservations required. Sign up/meet at The Ansel Adams Gallery Conditions permitting (AAG) Noon Yosemite Forum – Rock Glaciers of the Sierra Nevada: Their Distribution, Hydrology, and Significance in a Climate-change Context (November 13 only) 1 hr. Valley Visitor Center Auditorium (NPS) & Yosemite Forum: Western US Forest Wildfire Activity: Increase Due to Warming and Earlier Spring (December 11 only) 1 hr. Valley Visitor Center Auditorium (NPS) & 2:00pm Ranger Stroll – Trees 1½ hrs. Ahwahnee shuttle stop #3 (NPS) 7:30pm Evening Program 1 hr. Check local postings for venue and topic (DNC/NPS) &	7:30am Meet Yosemite 3 hrs. Front of Yosemite Museum (YA) \$ 9:00am WEE WILD (November 20 only) 45 min. Storytime under The Ansel Adams Gallery (DNC) & 1:00pm NPS Open House (November 20 only) 4 hrs. Come meet with us for an improvement project in the Valley Visitor Center Auditorium (NPS) & 2:00pm Ranger Stroll – Merced Meanders 1½ hrs. Front of Yosemite Museum (NPS) & 7:30pm Evening Program 1 hr. Check local postings for venue and topic (DNC/NPS) &
Wawona			5:30pm Vintage Music of Yosemite (November 13 and 20 only) 4 hrs. Live music and historical interpretive programs with pianist/singer Tom Bopp. Programs are available by request, usually given at 8:30pm; stop by the piano early in the evening and ask Tom for details. Wawona Hotel lounge (DNC) &	5:30pm Vintage Music of Yosemite (except November 13 and 20 only) 4 hrs. Live music and historical interpretive programs with pianist/singer Tom Bopp. Programs are available by request, usually given at 8:30pm; stop by the piano early in the evening and ask Tom for details. Wawona Hotel lounge (DNC) &

Walking Video-Audio Tour

Explore on your own...
 Enjoy 90 minutes of history, floods, wildlife, and comedy as you experience the hidden stories in the oak woodland and forest around Yosemite Falls.
 Show this coupon and receive up to 4 FREE Headphone Rentals
Expires 1/1/2008
 Starts at the Valley Visitor Center

Available 9:00 a.m. - 3:30 p.m.
 Adult \$9.95 / Child \$7.95

Yosemite Valley

Valley Visitor Center and Bookstore

Open 9:00 a.m. to 5:00 p.m. and located in Yosemite Village just west of the main post office (shuttle stops #5 and #9), the visitor center offers information, maps, and books. Explore the new exhibit hall and learn how Yosemite's spectacular landscape was formed, how people have interacted with it through the centuries, how wildlife adapts and survives, and how your national park continues to evolve. & TTY

FILM Spirit of Yosemite

This inspiring visitor-orientation film provides a stunning overview of Yosemite's splendor. It is shown every 30 minutes Monday through Saturday 9:30 a.m. to 4:30 p.m., and Sunday noon to 4:30 p.m. in the Valley Visitor Center Theater. & TTY

Yosemite Museum

Located in Yosemite Village next to the Valley Visitor Center. &

FEATURES

Museum Gallery Open 9:00 a.m. to 5:00 p.m. (may close for lunch).

Yosemite in the Sixties: Climbing Life through the Lens of Glen Denny November 10, 2007 – January 27, 2008

This exhibit shows the photographic work of Glen Denny, a climber in Yosemite from 1961 to 1971, a time when he was photographing the climbs and the activities of climbers in the park. Glen's photographic skills were in part self-taught, but included coursework with Ansel Adams, which influenced his approach. Come see a unique insiders' perspective of the rockclimbing world in Yosemite.

Indian Cultural Exhibit

Open 9:00 a.m. to 5:00 p.m.; the museum may close for lunch. The exhibit interprets the cultural history of Yosemite's native Miwok and Paiute people from 1850 to the present. Demonstrations of traditional skills are presented. No food or drink permitted.

Yosemite Museum Store

Open 9:00 a.m. to 5:00 p.m. the store offers traditional American Indian arts and crafts, and books on related subjects.

The Indian Village of Ahwahnee

Located behind the Yosemite Museum and open during daylight hours, the village offers exhibits on Ahwahneechee life. &

Yosemite Cemetery

This historic cemetery is located across the street just west of the Yosemite Museum. People buried here include American Indians and others who played an important role in the development of what is now Yosemite National Park. *Guide to the Yosemite Cemetery* is available at the Valley Visitor Center.

The Ansel Adams Gallery

Located in Yosemite Village next to the Valley Visitor Center and open daily from 9:00 a.m. to 5:00 p.m., the gallery offers the work of Ansel Adams, contemporary photographers, and other fine artists. In addition, handcrafts, books, gifts, digital services, and photography supplies are available. Scheduled activities are listed on the front porch. For more information, call 209/372-4413, or visit www.anseladams.com.

SPECIAL EVENTS

Third Annual Art Auction November 9, 5:00 p.m.

A benefit for the Yosemite Climbing Association. Artwork will be displayed on November 8 and 9. Reception will be held on November 9 at 5:00 p.m., with final bidding occurring at 5:30 p.m., ending promptly at 6:30 p.m. Refreshments will be served.

Book signing with Michael Ross November 10, 12:00 p.m. – 2:00 p.m.

Michael Ross will sign his new title *Mama's Milk*. Other titles will also be available for signing.

Book signing with Glen Denny November 10, 2:00 p.m. – 4:00 p.m.

Glen Denny, photographer of *Yosemite in the Sixties*, will be on hand to sign his new book.

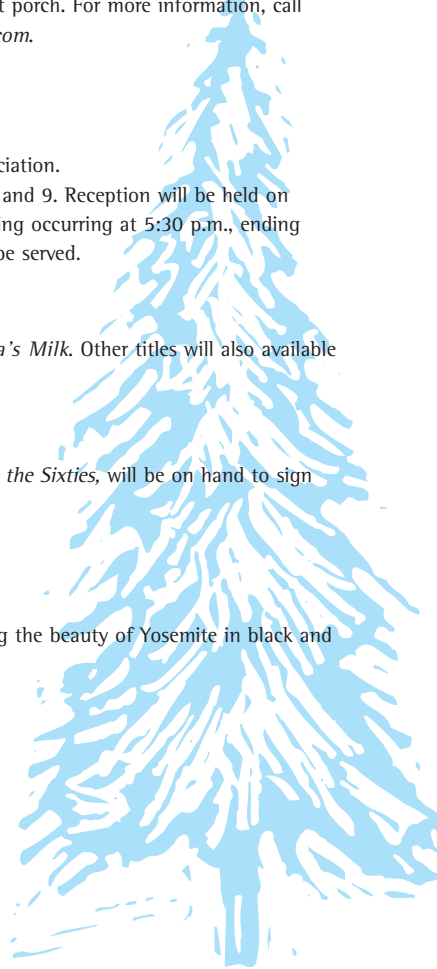
GALLERY EXHIBIT

Yosemite in Black and White November 11 through December 18

Group show of represented artists showing the beauty of Yosemite in black and white through the various seasons.



Yvon Chouinard sorting out, 1969, by Glenn Denny
 Yosemite Museum Gallery, see details at right.



November 7 - December 11, 2007

WEDNESDAY Nov. 21, 28 & Dec. 5	THURSDAY Nov. 8, 15, 22, 29 & Dec. 6	FRIDAY Nov. 9, 16, 23, 30 & Dec. 7	SATURDAY Nov. 10, 17, 24, Dec. 1 & 8
<p>Yosemite – Birding of Yosemite Valley Visitor Center</p> <p>WILD ONES 1 hr only) ies & activities for kids 6 and Ahwahnee Great Lounge fireplace</p> <p>House 8 only) and learn about park efforts Valley Visitor Center (NPS) &</p> <p>Roll – Wild About Wildlife t of Yosemite Valley Visitor &</p> <p>rogram ocal postings for venue and topic</p>	<p>9:00am Photography Walk 2 hrs. Limited space Reservations required. Sign up/meet at The Ansel Adams Gallery Conditions permitting (AAG)</p> <p>Meet Yosemite – Wildlife Safari 3 hrs. Front of Yosemite Valley Visitor Center (YA) \$</p> <p>2:00pm Ranger Stroll – Yosemite's Legacy 1½ hrs. Front of Yosemite Valley Visitor Center (NPS) &</p> <p>STORYTIME (November 22 only) ½ hr. The Ahwahnee Great Lounge fireplace (DNC) &</p> <p>4:00pm FAMILY STROLL (November 22 only) 1 hr. The Ahwahnee Patio (DNC)</p> <p>7:30pm Evening Program 1 hr. Check local postings for venue and topic (DNC/NPS) &</p>	<p>2:00pm Ranger Stroll – Geology 1½ hrs. Front of Yosemite Valley Visitor Center (NPS) &</p> <p>3:00pm WEE WILD ONES (November 23 only) 45 min. Stories & activities for kids 6 and under. The Ahwahnee Great Lounge fireplace (DNC) &</p> <p>7:30pm Film - Ansel Adams 1 hr. Check local postings for venue (AAG) &</p>	<p>9:00am Photography Walk 2 hrs. Limited space Reservations required. Sign up/meet at The Ansel Adams Gallery Conditions permitting (AAG)</p> <p>Meet Yosemite – Wildlife Safari 4 hrs. Yosemite Art & Education Center (YA) \$</p> <p>2:00pm Ranger Stroll – Bears 1½ hrs. Curry Village Amphitheater (NPS)</p> <p>3:00pm Fine Print Viewing 1 hr. Limited space Sign up at The Ansel Adams Gallery (AAG)</p> <p>4:00pm Autumn Twilight Stroll (November 24 only) 1 hr. The Ahwahnee Patio (DNC)</p> <p>7:30pm Evening Program 1 hr. Check local postings for venue and topic (DNC/NPS) &</p>
<p>Music of Yosemite ember 28 and December 5) usic and historical interpretive ch pianist/singer Tom Bopp. available by request, usually 0pm; stop by the piano early in and ask Tom for details. el lounge (DNC) &</p>	<p>5:30pm Vintage Music of Yosemite (except November 29 and December 6) 4 hrs. Live music and historical interpretive programs with pianist/singer Tom Bopp. Programs are available by request, usually given at 8:30pm; stop by the piano early in the evening and ask Tom for details. Wawona Hotel lounge (DNC) &</p>	<p>5:30pm Vintage Music of Yosemite (except November 30 and December 7) 4 hrs. Live music and historical interpretive programs with pianist/singer Tom Bopp. Programs are available by request, usually given at 8:30pm; stop by the piano early in the evening and ask Tom for details. Wawona Hotel lounge (DNC) &</p>	<p>5:30pm Vintage Music of Yosemite (except December 1 and 8) 4 hrs. Live music and historical interpretive programs with pianist/singer Tom Bopp. Programs are available by request, usually given at 8:30pm; stop by the piano early in the evening and ask Tom for details. Wawona Hotel lounge (DNC) &</p>

Wawona & Mariposa Grove

Wawona Hotel Evening Programs

Through November 24

Join pianist/singer Tom Bopp in the Wawona Hotel lobby from 5:30pm to 9:30pm., Tuesday through Saturday, as he performs songs and stories from Yosemite's past. Occasionally, he will present an hour-long interpretive program on the vintage songs of Yosemite or the history of Wawona with slide or music accompaniment. Check with Tom at the piano for dates and times. ♿

Pioneer Yosemite History Center

Go back to a time of horse-drawn wagons, a covered bridge, and log cabins. A visit to the Pioneer Yosemite History Center explores Yosemite's history and explains how Yosemite was the inspiration for national parks across America and around the world. The center is always open, and interpretive signs and brochures are available. ♿

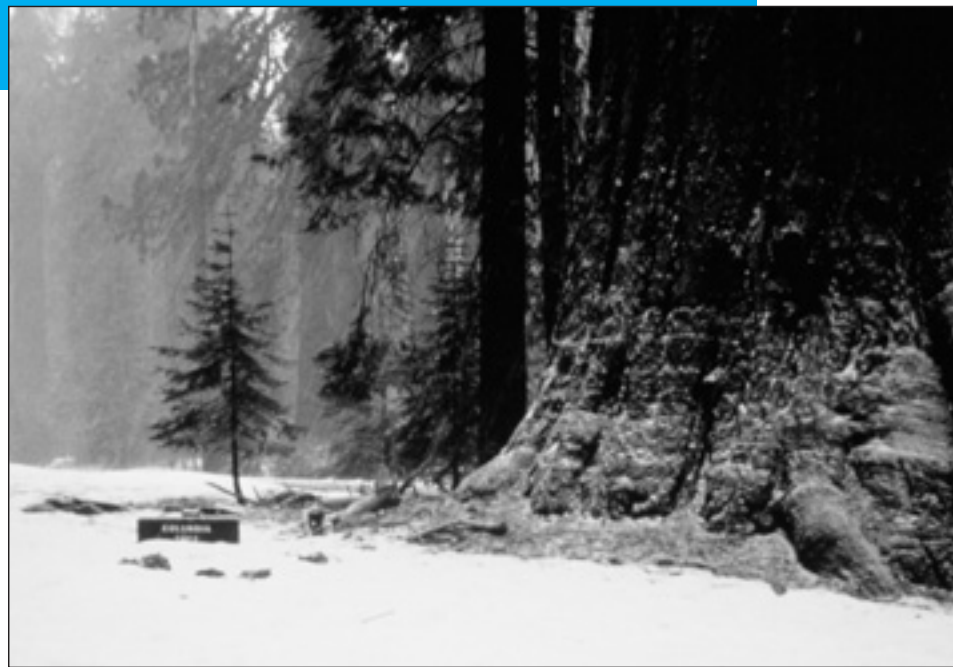
Mariposa Grove *Road closes in inclement weather*

Located at Yosemite's southern end, the Mariposa Grove is the park's largest stand of giant sequoias, with about 500 trees. Allow 1½ hours driving time to reach the grove from Yosemite Valley. Cars are prohibited beyond the grove parking lot. A few of these giants are visible in the parking area, and the remainder can be reached by hiking (see below). *Trailers are prohibited on the Mariposa Grove Road.*

DISTANCE & ELEVATION		
DESTINATION	DISTANCE FROM TRAILHEAD	ELEVATION GAIN
Grizzly Giant	0.8 mile / 1.3km	400ft / 122m
Grove Museum	2.1 miles / 3.5km	800ft / 292m
Fallen Tunnel Tree	2.5 miles / 4.0km	1,000ft / 305m
Wawona Point	3.0 miles / 4.8km	1,200ft / 438m

Walking through the Grove

Trails into the grove extend uphill from the trailhead at the far end of the parking area. Interpretive signs between the trailhead and the California Tunnel Tree provide a self-guiding tour. Written translations are available at the trailhead in Spanish, German, French, and Japanese. *Dogs are not permitted anywhere in the Grove.*



Mariposa Grove of Giant Sequoias

NPS Photo

Night Sky Information

One of the great advantages of visiting Yosemite is seeing the park's very dark night sky. Celestial features not visible in many urban areas can be seen.

November 7 Look far below Venus during dawn for the thin Moon.

November 24 Full Moon, called the Frost Moon this month.

December 4 Venus and the Moon shine in the southeast before and during dawn.



Yosemite's Other Sequoia Groves

Merced Grove

Yosemite's quietest stand of sequoias is the Merced Grove, a group of about 20 trees accessible only on foot. It's a four-mile round-trip hike (about three hours) into the grove from Big Oak Flat Road (Highway 120 West). Located 3½ miles west of Crane Flat and 4½ miles south of the Big Oak Flat Entrance, the trailhead is marked by a road sign and post labeled B-10.

Tuolumne Grove

This cluster of about 25 sequoias is near Crane Flat at the intersection of Big Oak Flat and Tioga roads. The former route of the Big Oak Flat Road leads downhill from Crane Flat into the grove. Now closed to cars, this path drops 500 feet (150 meters) in one mile. The trip is moderately strenuous on the uphill return. Within the Tuolumne Grove there is an easy, half-mile, self-guiding nature trail.

Yosemite Outdoor Adventures

These programs are offered for a fee

Woodpeckers: The Quest for Eleven with Yosemite Association Naturalist Pete Devine

SATURDAY, DECEMBER 8

Park entry and camping are included in this search for the greatest diversity of woodpeckers in North America; lodging is reserved at an extra cost.

For details, call the Yosemite Association at 209/379-2321 or visit www.yosemite.org, or check at the Valley Visitor Center

Yosemite Today

Published by the National Park Service, in cooperation with DNC Parks & Resorts at Yosemite, Inc.

Editor Marea Ortiz
Design / Production Skip Gaynard Designs
Printing Casey Printing, Inc.

We're Interested . . .

We are always looking for ways to improve our visitor publications. You can help by sending your comments via e-mail to Marea_Ortiz@nps.gov or fax to 209/372-0617.

Park Facilities and Services

ATM

Yosemite Village South of Village Store (Bank of America) Inside Village Store

Yosemite Lodge Inside main registration area

Curry Village Inside gift/grocery store

El Portal On Highway 140 at the Yosemite View Lodge and the El Portal Market.

Babysitting

Limited babysitting available for registered guests at Yosemite Lodge and The Ahwahnee. Call front desk or concierge for additional information.

Food & Beverage Service

These hours of operation are approximate. Current hours of operation are posted at each front desk or facility.

YOSEMITE VILLAGE

Degnan's Delicatessen 7:00 a.m. to 5:00 p.m.

YOSEMITE LODGE

Coffee Corner 6:30 a.m. to noon

Food Court

Breakfast 6:30 a.m. to 11:00 a.m.

Lunch 11:30 a.m. to 2:00 p.m.

Dinner 5:00 p.m. to 7:30 p.m.

Mountain Room Lounge

Monday - Friday 4:30 p.m. to 11:00 p.m.

Saturday - Sunday noon to 11:00 p.m.

Mountain Room Restaurant

Sunday - Thursday 5:00 p.m. to 8:30 p.m.

Friday - Saturday 5:00 p.m. to 9:00 p.m.

Reservations for parties of 8 or more

November 22 Thanksgiving Dinner

4:00 p.m. to 9:00 p.m.

209/372-1281

THE AHWAHNEE

Dining Room

Breakfast 7:00 a.m. to 10:30 a.m.

Lunch 11:30 a.m. to 3:00 p.m.

Dinner 5:30 p.m. to 9:00 p.m.

Sunday Brunch 7:00 a.m. to 3:00 p.m.

November 22 Thanksgiving Dinner

11:30 a.m. to 9:00 p.m.

Appropriate attire is respectfully requested for dinner. Reservations are recommended for dinner and Sunday Brunch. 209/372-1489

The Ahwahnee Bar 11:00 a.m. to 11:00 p.m.

CURRY VILLAGE

Guest Lounge 8:00 a.m. to 10:00 p.m.

Open through November 24

Coffee Corner 7:00 a.m. to 11:00 a.m.

Open through November 25

Pizza Deck 5:00 p.m. to 9:00 p.m.

Open through November 24

WAWONA HOTEL

Dining Room

Closes after breakfast November 25

Breakfast - 7:30 a.m. to 10:00 a.m.

Lunch - 11:30 a.m. to 1:30 p.m.

Dinner - 5:30 p.m. to 9:00 p.m.

Reservations taken for 8 or more. 209/375-1425

Guest Lounge 5:00 p.m. to 9:30 p.m.

Open through November 24

Gifts, Books, & Apparel

YOSEMITE VILLAGE

The Ansel Adams Gallery 9:00 a.m. to 5:00 p.m.

Yosemite Art & Education Center

9:00 a.m. to noon, 1:00 p.m. to 4:30 p.m.

Art supplies available for sale on weekends only.

Yosemite Bookstore 9:00 a.m. to 5:00 p.m.

Inside Valley Visitor Center

Yosemite Museum Store 9:00 a.m. to 5:00 p.m.

Village Store 8:00 a.m. to 9:00 p.m.

Habitat Yosemite 9:00 a.m. to 5:00 p.m.

Closed Tuesday and Wednesday

Sport Shop 10:00 a.m. to 4:00 p.m.

YOSEMITE LODGE

Gift/Grocery

Sunday - Thursday 8:00 a.m. to 8:00 p.m.

Friday - Saturday 8:00 a.m. to 9:00 p.m.

Nature Shop 11:00 a.m. to 6:00 p.m.

THE AHWAHNEE

Gift Shop 8:00 a.m. to 8:00 p.m.

Sweet Shop 7:00 a.m. to 10:00 p.m.

CURRY VILLAGE

Mountain Shop 8:00 a.m. to 6:00 p.m.

Gift/Grocery 8:00 a.m. to 8:00 p.m.

Beginning November 26 8:00 a.m. to 7:00 p.m.

WAWONA

Wawona Store & Pioneer Gift Shop

8:00 a.m. to 6:00 p.m.

MARIPOSA GROVE

Big Trees Gift Shop 9:00 a.m. to 5:00 p.m.

Closes after first major snow storm.

Groceries

Yosemite Lodge Gift/Grocery

Sunday - Thursday 8:00 a.m. to 8:00 p.m.

Friday - Saturday 8:00 a.m. to 9:00 p.m.

Village Store 8:00 a.m. to 9:00 p.m.

Degnan's Delicatessen 7:00 a.m. to 5:00 p.m.

Curry Village Gift/Grocery 8:00 a.m. to 8:00 p.m.

Beginning November 26 8:00 a.m. to 7:00 p.m.

Wawona Store & Pioneer Gift Shop

8:00 a.m. to 6:00 p.m.

El Portal Market 9:00 a.m. to 7:00 p.m.

Crane Flat

8:00 a.m. to 5:00 p.m. *Reopens November 17*

Internet Access

Internet access is available to park visitors at three locations: Yosemite Lodge, Degnan's Deli, and the Mariposa County Library (Girls Club), south of the Yosemite Cemetery. Access at the library is free, requires a sign-up and is available during limited hours Monday through Thursday (check at library for details). At Yosemite Lodge, kiosks and wireless access are available 24 hours a day, for a fee. At Degnan's Deli, kiosks are available 7:00 a.m. to 5:00 p.m. for a fee.

Showers & Laundromat

SHOWERS

Curry Village 24 hours

Open through November 24

LAUNDROMAT

Housekeeping Camp 8:00 a.m. to 10:00 p.m.

Recycling

Yosemite Village Store Recycling Center

Noon to 4:00 p.m.

Tuesday, Thursday & Saturday

Post Offices

Main Post Office - Yosemite Village

Monday - Friday 8:30 a.m. to 5:00 p.m.

Saturday 10:00 a.m. to noon

Yosemite Lodge Post Office

Monday - Friday 12:30 p.m. to 2:45 p.m.

Wawona Post Office

Monday - Friday 9:00 a.m. to 5:00 p.m.

Saturday 9:00 a.m. to noon

El Portal Post Office

Monday - Friday

8:30 a.m. to 12:30 p.m., 1:30 p.m. to 5:00 p.m.

Gas Station

Wawona

9:00 a.m. to 6:00 p.m. Diesel & propane available.

Pay at the pump 24 hours with credit or debit card.

Crane Flat *Reopens November 17*

8:00 a.m. to 5:00 p.m. Diesel available. Pay at the pump 24 hours with credit or debit card.

8:00 a.m. to 5:00 p.m. Diesel available. Pay at the pump 24 hours with credit or debit card.

El Portal

9:00 a.m. to noon, 1:00 p.m. to 5:00 p.m.

Diesel available.

Pay at the pump 24 hours with credit or debit card.

Auto Service, Towing, and Repair (AAA)

Village Garage

8:00 a.m. to 5:00 p.m.

Towing 24 hours. Propane available until 4:00 p.m.

209/372-8320

Service Organizations

Al-Anon Effective October 3, there will be no more Al-Anon meetings until further notice. If you need to speak with someone, or ask questions, please call Shari B. at 209/372-4812.

Alcoholics Anonymous

7:30 p.m. Sunday, Tuesday, and Thursday

DNC General Office Building

(Employee Training Center) Yosemite Village

Lions Club

Meets the first and third Thursdays of each month at noon, The Ahwahnee. Call 209/372-4475 for information.

Rotary International

Meets Thursdays for lunch at noon in The Ahwahnee Mural Room. Visiting Rotarian families and guests welcome. For meeting reservations or information, call 209/372-8459.

Religious Services

YOSEMITE COMMUNITY CHURCH

(Nondenominational Christian)

Pastor Brent Moore 209/372-4831

Wedding information on our website:

www.yosemitevalleychapel.org

Various Bible Studies during the week.

Counseling provided. Call pastor for appointment.

Worship Service/Yosemite Valley Chapel

Sunday 9:15 a.m. (Sunday School and Nursery available)

Sunday 6:30 p.m.

Tuesday Women's Bible Study 6:30 p.m.

Held at Pastor Brent's home, call for location

Tuesday Men's Bible Study 7:00 p.m.

Thursday 7:00 p.m.

ROMAN CATHOLIC

Rev. Raymond J. Duffy 209/372-4729

Mass in Yosemite Valley

Valley Visitor Center Theater

Sunday 10:00 a.m.

CHURCH OF CHRIST (Nondenominational)

Ron Skelton 209/379-2307 or 209/379-2100

El Portal Chapel/Worship Service Sunday 11:00 a.m.

Foresta Road, at top of Chapel Lane

CROSSWAY TRIBE OF JESUS

(Christian Protestant) 209/379-2428

Pastor Steve Hughes,

Worship Gathering

Wednesday 7:00 p.m.

Mariposa County Library (Girls Club)

South of the Yosemite Cemetery

General Park Information

Emergency 9-1-1

Fire - Police - Medical Emergency: Dial 9-1-1, 24 hours a day (from hotel room 9, 9-1-1)

Park Information

Road, Weather, and General Park Information

209/372-0200 www.nps.gov/yose

Park Partner Information

www.yosemitepartners.org

Medical

Yosemite Medical Clinic

Emergency care: 24 hours daily

Drop-in and urgent care: 8:00 a.m. to 7:00 p.m.

Appointments

8:00 a.m. to 6:00 p.m. Monday - Friday

Located on Ahwahnee Drive in Yosemite Valley, the clinic provides routine and emergency medical care, 24-hour paramedic/ambulance services, limited pharmacy, lab, x-ray, physical therapy, and Mountain Crisis Services for victims of domestic violence. 209/372-4637

PAD Program

Yosemite's Public Access Defibrillation (PAD) Program is designed to protect park visitors and staff from sudden cardiac arrest. All automated external defibrillator (AED) cabinets have been placed in high visitor-use locations and are open and accessible to anyone in the event of a medical emergency. For more information about the PAD Program, contact the Yosemite Medical Clinic.

AEDs can be found at the following locations: Village Store (Yosemite Village); registration desks at Yosemite Lodge, Curry Village, The Ahwahnee, and the Wawona Hotel; Crane Flat Store; Badger Pass Lodge (winter); and Glacier Point (summer).

Dental Services

Adjacent to Yosemite Medical Clinic. For hours, call 209/372-4200. If no answer, call 209/372-4637.

Weather Radio

The National Weather Service broadcasts weather information for Yosemite National Park 24 hours a day on NOAA Weather Radio station KAD-94, on a frequency of 162.450 MHz. Please note that reception may not be available in remote areas.

Accommodations

For advance reservations or information (rooms or activities), call 559/252-4848, or visit www.YosemitePark.com. For availability on day of arrival, check at any front desk.

Camping

To reserve campsites, call the National Recreation Reservation Service at 877/444-6777 between 7:00 a.m. and 9:00 p.m., or check www.recreation.gov. For same-day reservations, visit Yosemite's Campground Reservation Office at the northeast corner of the Curry Village parking lot. First-come, first-served campsites are also available. See the *Yosemite Guide* for details.

Accessible Services

The Yosemite *Accessibility Guide* is available at park entrance stations, visitor centers, and online at www.nps.gov/yose/access.

TTYs are available inside The Ahwahnee and Yosemite Lodge, and outside the Valley Visitor Center and Curry Village front desk.

Accessible parking spaces are available just west of the Yosemite Valley Visitor Center. To reach these, enter the Valley on Southside Drive, and go west (left) on Sentinel Drive. Turn left on Northside Drive, and follow the blue-and-white accessibility signs.

Bear Canister Rental

Canisters are available for \$5 per trip at the Valley Visitor Center Bookstore and Hetch Hetchy Entrance Station.

Wilderness Permits

Anyone going into Yosemite's backcountry must have a Wilderness permit. Self-register for permits at the Valley Visitor Center, Hill's Studio porch (near Wawona Hotel), Big Oak Flat Information Station, Hetch Hetchy Entrance Station, or Tuolumne Meadows Ranger Station.

Recreation *Conditions permitting*

YOSEMITE MOUNTAINEERING SCHOOL AND GUIDE SERVICE

Yosemite Mountaineering School and Guide Service offers lessons and guided climbing at all levels, overnight backpacking, and guided day hikes to spectacular areas of Yosemite.

Curry Village 209/372-8344

8:30 a.m. to noon, 1:00 p.m. to 5:00 p.m.

BICYCLE RENTALS

Daily, weather permitting, with hourly and daily rates. Baby-joggers, wheelchairs, and six-speed bikes with trailers. *Last rentals are at 2:45 p.m.* Call 209/372-4FUN for information.

Yosemite Lodge 10:00 a.m. to 4:00 p.m.

Closed 1:30 p.m. to 2:00 p.m. for lunch

ICE SKATING RINK

Opens for season November 16, weather permitting. Located at Curry Village, shuttle stop #13A and #21 209/372-8341

Monday - Friday

3:30 p.m. - 6:00 p.m., 7:00 p.m. - 9:30 p.m.

Saturday, Sunday, and holidays

8:30 a.m. - 11:00 a.m., noon - 2:30 p.m.

3:30 p.m. - 6:00 p.m., 7:00 p.m. - 9:30 p.m.

Tours *Conditions permitting*

Information & Reservations 209/372-4386

Monday - Friday 7:00 a.m. - 9:00 p.m.

Saturday - Sunday 7:00 a.m. - 7:00 p.m.

Yosemite Lodge Tour Desk

7:30 a.m. to 7:00 p.m. 209/372-1240

Big Trees Tour Kiosk

Closes after first major snow

10:00 a.m. to 4:00 p.m. 209/375-1621

SIGHTSEEING TOURS

Valley Floor Tour *weather permitting*

This 26-mile, 2-hour tour departs several times daily from Yosemite Lodge at the Falls in Yosemite Valley. Contact any tour desk for times.

Glacier Point Tour* *weather permitting*

This 4-hour round trip from Yosemite Valley to Glacier Point departs at 8:30 and 1:30 p.m., daily from Yosemite Lodge. The Glacier Point Tour also offers a one-way ticket for adventurers to hike back down to Yosemite Valley.

Big Trees Tram Tour* *weather permitting*

Trams run every day in the Mariposa Grove of giant sequoias for a 1-hour tour through the lower and upper groves. Call 209/375-1621 for information.