

Zion

NATIONAL PARK • UTAH

Nothing can exceed the wonderful beauty of Zion....In the nobility and beauty of the sculptures there is no comparison.... There is an eloquence to their forms which stirs the imagination with a singular power, and kindles in the mind a glowing response.

—Clarence E. Dutton, geologist, 1882

The park is open all year. From December to March, snow may fall intermittently but usually lasts only a day or two on the canyon floor. Winter maximum temperatures average 60°; the minimum average is 15°.

May to October daytime temperatures may range from 85° to 105°; nighttime, from 65° to 70°.

WHAT TO SEE AND DO

The visitor center, your headquarters while in the park, is open from 8 a.m. to 5 p.m. from October through April; from May through September, the hours of operation are extended. Here, you can obtain information that will help you plan your visit, see exhibits on the natural history of the park, study a relief map of Zion Canyon, and learn about the park through orientation programs.

Interpretive program schedules are posted throughout the park.

Illustrated talks about the park are presented by park rangers each evening in summer at Zion Lodge and at the campground amphitheaters.

Guided trips are conducted daily in summer over well-maintained trails; in spring and autumn, several times a week.

Drives. On a 12-mile round-trip drive through Zion Canyon, you can see the shapes of Zion: The Sentinel, Three Patriarchs, Mountain of the Sun, and Great White Throne.

Kolob Canyons Road, in the Kolob Canyons section, is a paved 5.2-mile spur leading into the northwest corner of the park from Int. 15 near Kanarrville. This road is closed from late autumn to spring.

A secondary road from Utah 15 at the town of Virgin leads northward through private ranch country to the Lava Point Fire Lookout on the Kolob Terrace highlands and beyond. Steep, winding, and unimproved, it crosses the terrace and descends Right Hand Canyon to Utah 14 near Cedar City. This road should only be traveled in good weather.

Park roads are designed for your enjoyment of the scenery—not for speed. Maximum speed is 35 miles an hour. Keep to the right of the center stripe. Do not park on curves. Watch for deer.

Your car's lights must be in good working order; they are essential in traveling through the mile-long tunnel.

Walks and hikes. The trails of Zion complement the park's striking views and are almost as famous.

All experienced hikers take such commonsense precautions as the following: Obtain detailed information from a park ranger on back-country trails before attempting to hike them. Seek the advice

of a park ranger before attempting the more difficult trails; tell him where you plan to go and when you plan to return. Do not hike alone. Stay on established trails; taking shortcuts may endanger yourself and others. Children under 16 years of age should be accompanied by a responsible adult on all trails within the park.

The most popular trail, a mile-long footpath from the road's end at the Temple of Sinawava, winds near the east wall of the canyon, past cliffs trickling with streams, to the Gateway to The Narrows. On this walk you can see the Hanging Gardens of Zion, luxuriant verdure, and wildlife.

Self-guiding trips may be made throughout most of the year on the trails to Weeping Rock and to Canyon Overlook.

Other trails reach such places as the Emerald Pools and Hidden Canyon. West Rim Trail, leading to views of the Great West Canyon, and East Rim Trail, with its unequalled view of Zion Canyon, are more strenuous but well worth the effort.

In the Kolob Canyons section, you may hike along the streambed of Middle Fork to the great double-arch amphitheater. Here you see the finger canyons, whose sheer walls form box canyons 1,500 feet deep. The round-trip distance is 4 miles. Another trail leads down Timber Creek from Lee Pass. After turning east into La Verkin Creek, this trail divides: one segment passes through Hop Valley (12 miles one way), and the other continues into upper La Verkin Creek. Round-trip distance from Lee Pass to the Kolob Arch is 13 miles.

All persons who plan to make technical rock climbs are required to register at park headquarters. Climbing alone is not recommended.

Please leave the animals, trees, wildflowers, rocks, and geological formations undisturbed so that other people, too, may enjoy them.

Wheeled devices are not allowed on park trails.

Horseback trips. Arrangements for guided horseback trips within the park may be made at Zion Lodge or Zion Inn. Schedules are posted throughout the park.

Fishing is allowed all year in the Virgin River below Zion Narrows, but it is marginal because of frequent flooding and seasonal fluctuations in water levels. A Utah fishing license is required.

The park is a sanctuary for wildlife; hunting or the use (or display) of firearms is not allowed.

Pets are prohibited on trails or in public buildings, and they must be kept under physical control at all times.



HOW TO REACH THE PARK

Int. 15 (U.S. 91) passes west of Zion and connects with Utah 15 and 17 to the park. U.S. 89 passes east of the park and connects with Utah 15 to the park.

In summer, the Utah Parks Company furnishes bus service from Cedar City, but there is no common carrier service to the park the rest of the year. The nearest scheduled air service is through Cedar City, Utah.

ACCOMMODATIONS AND SERVICES

Campgrounds. Either South or Watchman Campground is open all year; both are open in summer. Camping limit is 14 days; campsites are not reserved. Fees are charged. Camping is permitted only in designated campsites.

Both campgrounds are equipped with individual campsites, fire grates, tables, tap water, an ice machine, restrooms, and a sanitary disposal station for travel trailers and campers. Utility hook-ups are not available.

Collect *only* dead and down firewood. Be careful with fire at all times. Keep your campfire small and under control. Build fires only in fireplaces. Break your match and hold it until it is cold before throwing it away; crush your cigarette, and be sure that no embers remain.

Picnic sites are available at the Grotto Picnic Area (near Zion Lodge) and at the end of Kolob Canyons Road.

Lodging. The Utah Parks Company (Cedar City, UT 84720) operates Zion Inn and Zion Lodge, the service station in the park, and the scheduled bus tours to Zion (and to Cedar Breaks National Monument, Bryce Canyon National Park, the North Rim of Grand Canyon National Park, and Kaibab National Forest).

Zion Inn, open from mid-May through September, and Zion Lodge, open from early June through

Labor Day, have cabin accommodations. Reservations are advisable in summer.

Communities in the vicinity offer year-round accommodations.

Food. Zion Lodge has a dining room and soda fountain; Zion Inn, a cafeteria and groceries.

Medical attention: A registered nurse is on duty at Zion Lodge in summer. A physician is available in Hurricane, 24 miles west of the park. Hospitals are in St. George, 45 miles west of the park, Cedar City, 60 miles north, and Kanab, 42 miles east.

Religious services. Protestant (interdenominational), Latter-day Saints, and Roman Catholic services are held in summer. See posted schedules.

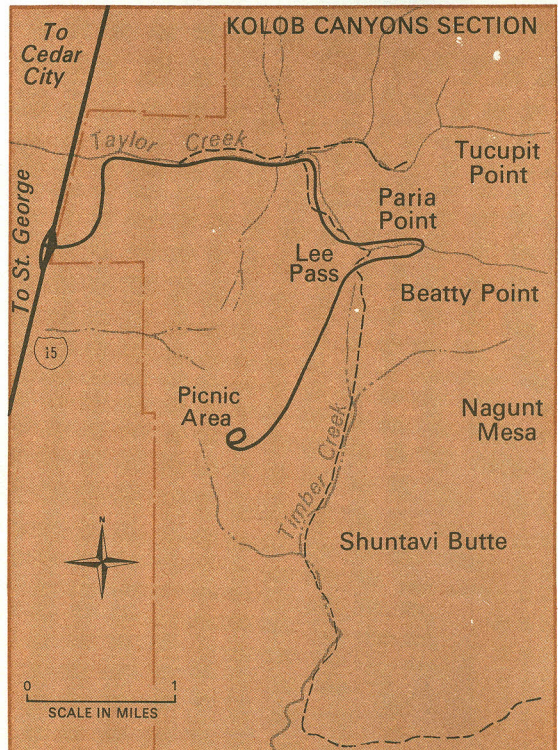
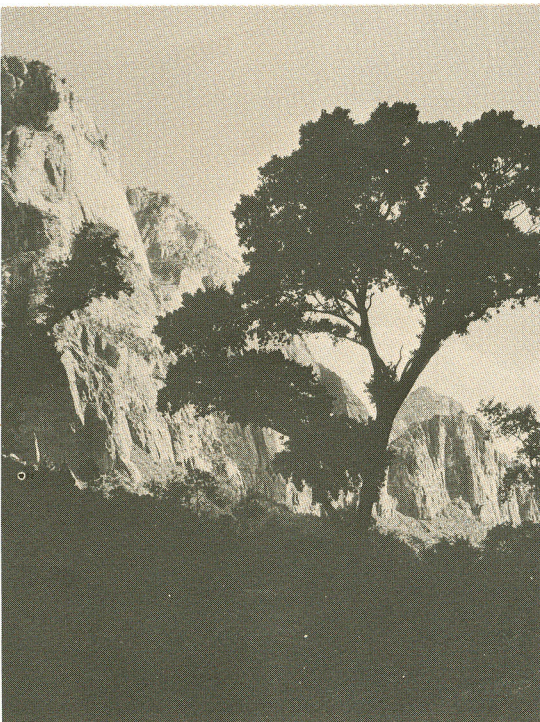
Emergency messages may be received at the visitor center and entrance stations. If you anticipate a message, leave your name and instructions for locating you at one of these places.

Public telephones are at the visitor center, Zion Lodge, Zion Inn, and the service station.







Automobile service. The service station at Zion Inn is operated only in summer. Springdale has service stations and a garage (with towing service) that are operated all year; Mt. Carmel Junction has all-year service stations.

NEARBY PLACES OF INTEREST

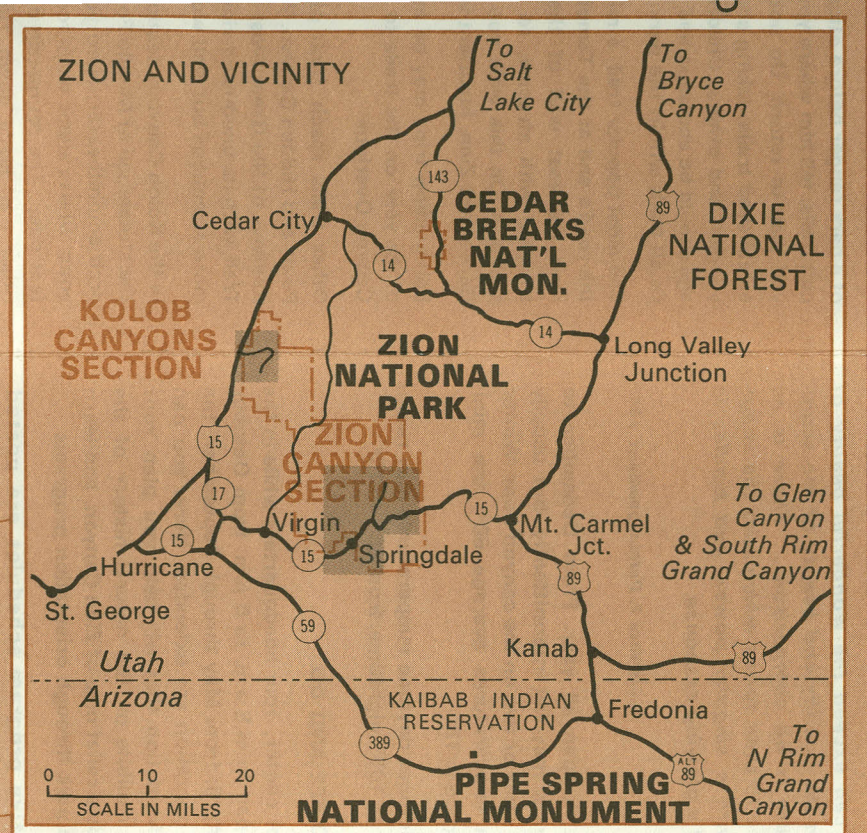
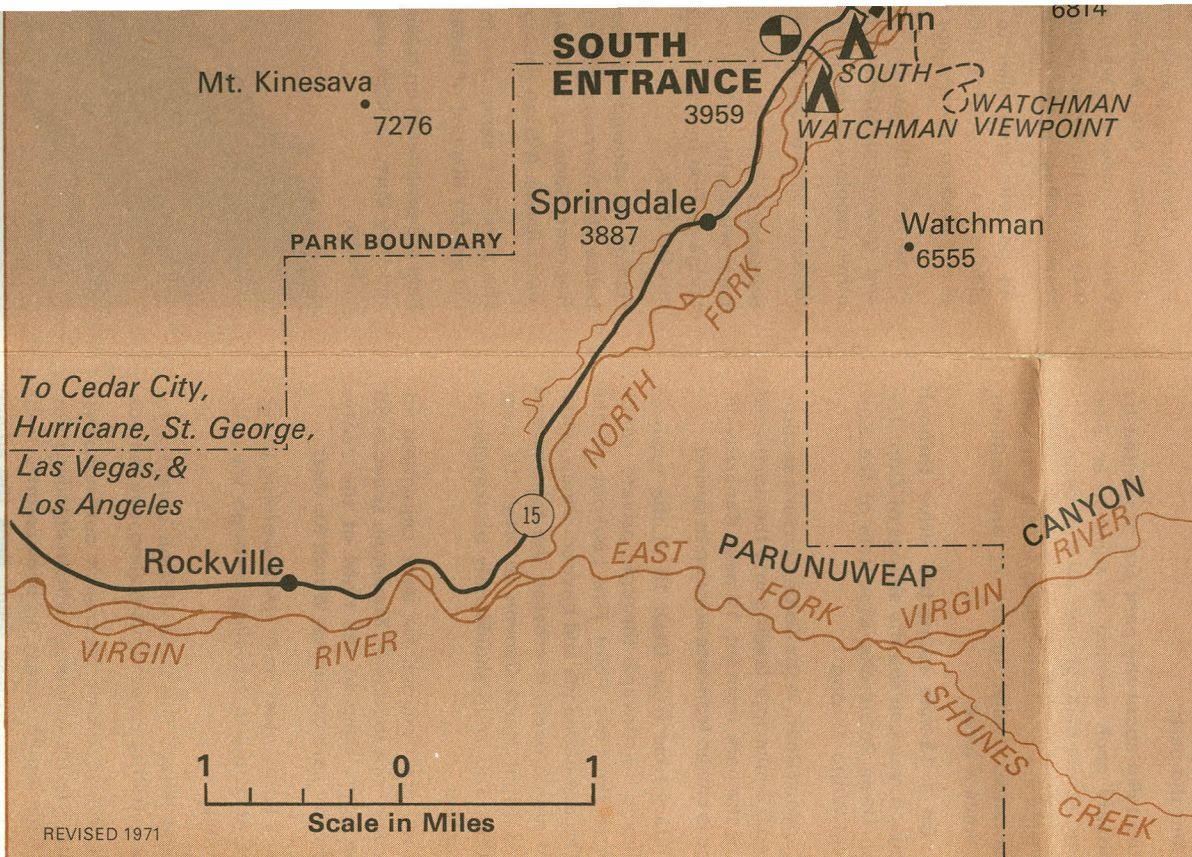
Within a 1-day drive of Zion are many places of outstanding scenic, historic, and recreational interest, including Bryce Canyon National Park, Capitol Reef and Cedar Breaks National Monuments, Lake Mead National Recreation Area, Grand Canyon National Park (North and South Rims), Grand Canyon National Monument, Glen Canyon Recreation Area, Pipe Spring National Monument, Valley of Fire State Park (Nevada), Dixie State Park (near St. George, Utah), Coral Pink Sand Dunes State Park (near Kanab), and Dixie, Fishlake, and Kaibab National Forests.



ZION NATIONAL PARK (ZION CANYON SECTION)

-  Campground
-  Shelter
-  Ranger Station
-  Parking
-  Road
-  Trail





PARK TRAILS

Trail	Starting point	Distance (round trip)	Climb	Average Time (round trip)	Remarks
Gateway to The Narrows	Temple of Sinawava	2 miles	57 feet	2 hours	Easy, no steep grades. All-weather trail. Fine view of river flood plain. Trailside exhibit near Temple of Sinawava.
Weeping Rock	Weeping Rock parking area	½ mile	98 feet	½ hour	An easy, surfaced, self-guiding trail. Water drips from overhanging cliff; springs issue from it. Hanging gardens; travertine deposits.
Emerald Pool	Zion Lodge or Grotto picnic area	2 miles	69 feet	2 hours	Cross river on footbridges. Small pool formed by two falls. Loop or one-way trail.
Canyon Overlook	Parking area, upper end of large tunnel	1 mile	163 feet	1 hour	A self-guiding trail. Mostly easy walking to top of Great Arch. Excellent view of Pine Creek Canyon and west side of Zion Canyon.
East Rim	Weeping Rock parking area	7 miles	2,148 feet	5 hours	Fairly strenuous foot and horse trail. Carry water, lunch. Cross footbridge and climb to East Rim Trail sign.
Hidden Canyon	Weeping Rock parking area	2 miles	850 feet	2 hours	Fairly strenuous. Hidden Canyon represents Zion's "Shangri-la," an almost inaccessible canyon of quietness and solitude.
West Rim	Grotto picnic area	12½ miles	3,070 feet	8 hours	Strenuous foot and horse trail. Carry water, lunch. Cross river on footbridge.
Angels Landing	Grotto picnic area	5 miles	1,488 feet	4 hours	Strenuous foot trail; experienced hikers only; steep climb. Half of trail hard-surfaced. Cross footbridge over river. Excellent view of Zion Canyon.
Watchman Viewpoint	River bridge above South Campground	2 miles	368 feet	2 hours	View of The Watchman, Springdale, and Zion and Oak Creek Canyons. Changing vegetation.

ADMINISTRATION

Zion National Park is administered by the National Park Service, U.S. Department of the Interior. A superintendent, whose address is Springdale, UT 84767, is in immediate charge.

As the Nation's principal conservation agency, the Department of the Interior has basic responsibilities for water, fish, wildlife, mineral, land, park, and recreational resources. Indian and Territorial affairs are other major concerns of America's "Department of Natural Resources." The Department works to assure the wisest choice in managing all our resources so each will make its full contribution to a better United States—now and in the future.

U. S. Department of the Interior

National Park Service