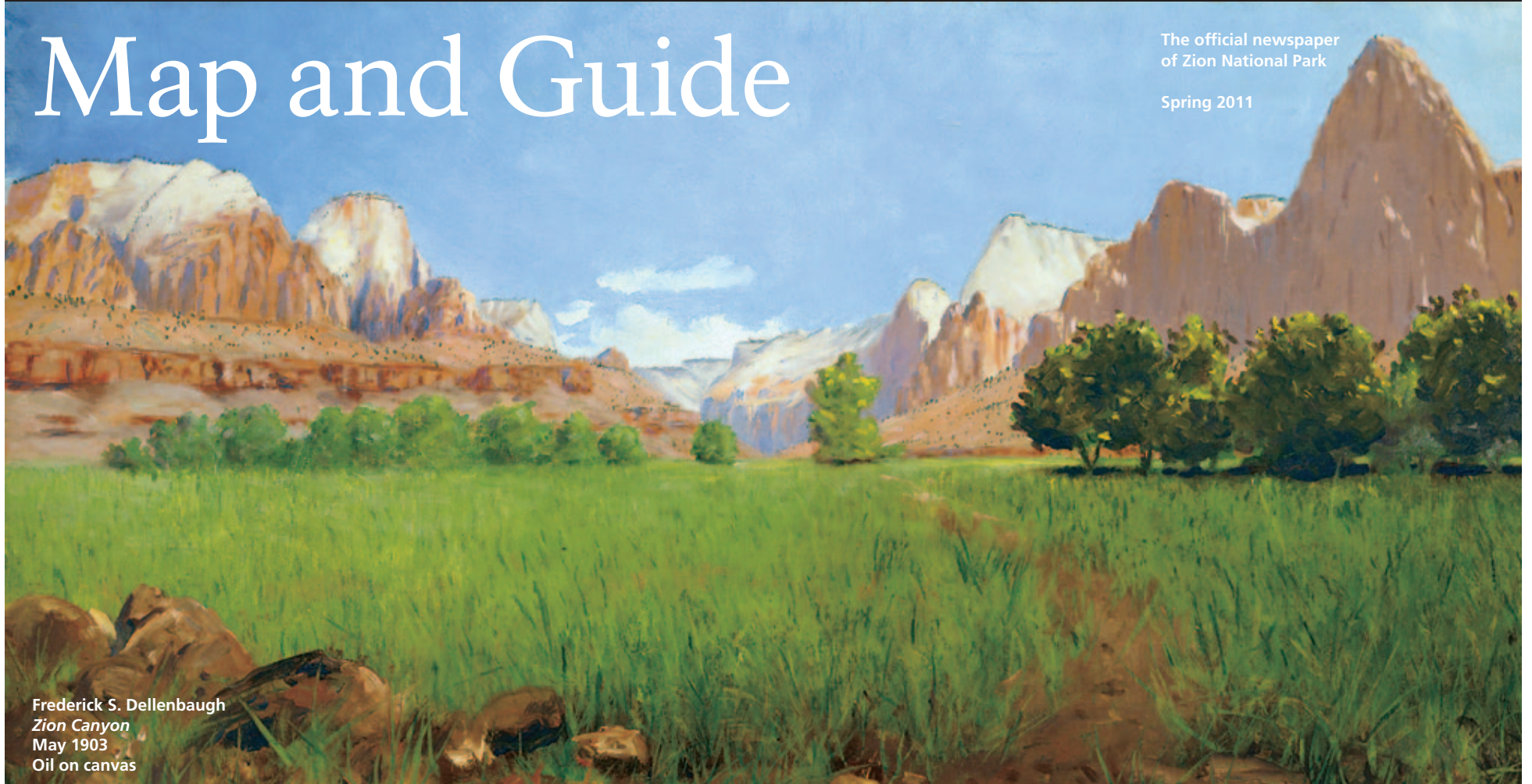




Map and Guide

The official newspaper
of Zion National Park

Spring 2011



Frederick S. Dellenbaugh
Zion Canyon
May 1903
Oil on canvas

NPS COLLECTION / ZION 38105

Plan Your Visit



Welcome to Zion National Park. Steep cliffs, narrow canyons, and unpredictable weather add to the challenge and adventure of a visit, so it is important to plan carefully for your stay. Park rangers at the visitor centers can provide planning information and weather forecasts, but your safety depends on your own good judgment, adequate preparation, and constant awareness.



SOCIAL MEDIA
Zion National Park is constantly searching for new ways to connect with our visitors. Social media websites, like Twitter and Flickr provide the park with an opportunity to share information and create a place for visitors to learn more about Zion National Park. These sites encourage interaction and enable our visitors to experience the park in an entirely new way.

TWITTER
twitter.com/zionnps
Twitter is a real-time information network that connects you to the latest information about the park. Sign up to follow @zionnps on Twitter to receive breaking news, severe weather warnings, closure updates, special event announcements, and other information.

FLICKR
www.flickr.com/photos/zionnps
Flickr is a photo sharing website that provides a place for the park and our visitors to post images and videos. Visit ZionNPS on Flickr to view recent photos and learn more about the plants, animals, and areas that make Zion so special.

www.flickr.com/groups/zionnps
Are you interested in sharing your photos of Zion National Park? Visit the ZionNPS Group on Flickr to view photos from other visitors and share your own.

Hours of Operation

	April 1 to April 23	April 24 to May 26	May 27 to September 5
Zion Canyon Visitor Center	8:00 a.m. to 5:00 p.m.	8:00 a.m. to 6:00 p.m.	8:00 a.m. to 7:30 p.m.
Zion Canyon Backcountry Desk	8:00 a.m. to 5:00 p.m.	7:00 a.m. to 6:00 p.m.	7:00 a.m. to 7:30 p.m.
Zion Human History Museum	10:00 a.m. to 5:00 p.m.	10:00 a.m. to 6:00 p.m.	9:00 a.m. to 7:00 p.m.
Kolob Canyons Visitor Center	8:00 a.m. to 4:30 p.m.	8:00 a.m. to 5:00 p.m.	8:00 a.m. to 6:00 p.m.

The Zion Nature Center opens for the season on Saturday, May 28 from noon to 5:00 p.m.

Entrance Fees

Private Vehicle	\$25 per vehicle
Pedestrian	\$12 per person
Bicycle	\$12 per person
Motorcycle	\$12 per person
Organized Group	\$12 per person
Commercial Tours	Ask about rates

All entrance fees are valid for seven days.

ZION ANNUAL PASS \$50
Admission to Zion National Park for one year from date of purchase.



SENIOR PASS \$10
Admission to all federal fee areas for life, U.S. citizens 62 years or older.



ANNUAL PASS \$80
Admission to all federal fee areas for one year from date of purchase.



ACCESS PASS Free
Admission to all federal fee areas for life, permanently disabled U.S. citizens.



All passes are available at park entrance stations. Information about interagency passes and participating agencies (NPS, BLM, FWS, FS, and BOR) is available online at store.usgs.gov/pass.



National Park Service
U.S. Department of the Interior

Zion National Park

Superintendent
Jock Whitworth

Mailing Address
Zion National Park
Springdale, UT 84767

Park Information
435 772-3256

Backcountry Information
435 772-0170

Website
www.nps.gov/zion

E-mail
ZION_park_information@nps.gov

Lost and Found
Report at any visitor center

Emergencies
911 or 435 772-3322

Services



ACCESSIBILITY

The park visitor centers, museum, restrooms, shuttle buses, picnic areas, and Zion Lodge are accessible. Several campsites are reserved for people with disabilities, and the Pa'rus Trail and Riverside Walk offer accessible hikes. Service dogs are permitted on a leash throughout the park.

The orientation film offers captioning and the frontcountry trails video has an audio description. Accessible programs are indicated in the Ranger-led Program Schedule. Assistive listening devices are available by reservation for all ranger-led programs. Please visit the Zion Human History Museum for more information.



LODGING

In the park, the Zion Lodge has rooms, suites, cabins, and a gift shop. For reservations, please call 888 297-2757 or 435 772-7700, or visit www.zionlodge.com. There are other lodging options in Springdale, Rockville, Hurricane, near the East Entrance, Mt. Carmel Junction, Kanab,

St. George, Cedar City, and other surrounding communities.



RESTAURANTS

In the park, the Zion Lodge dining room and café serve breakfast, lunch, and dinner. Dinner reservations are required; please call 435 772-7760. There are also restaurants in Springdale, Virgin, La Verkin, Hurricane, near the East Entrance, Mt. Carmel Junction, Kanab, St. George, Cedar City, and other surrounding communities.



GROCERIES

There are grocery stores in Springdale, La Verkin, Hurricane, Kanab, St. George, and Cedar City. There are convenience stores in most surrounding communities.



MONEY

An ATM is located in the park at the Zion Lodge. Banks and ATMs are located in most surrounding communities.



SHOWERS

There are no showers available within Zion National Park. Pay showers are available in Springdale and east of the park. The availability of these services varies throughout the year.



LAUNDRY

There are laundry facilities located in Springdale, Hurricane, and Kanab. There are no laundry facilities within the park.



PETS

Leashed pets may be walked on the Pa'rus Trail. However, pets are not permitted on any other trails, on shuttles, in public buildings, or in the backcountry. Pets must be under physical control on a leash less than six feet at all times. The interior temperature of a vehicle can quickly warm to dangerous levels. Avoid leaving animals in vehicles. Boarding kennels are available in Rockville, Kanab, Hurricane, St. George, and Cedar City.

Wildlife



Zion National Park is home to 68 species of mammals, 207 birds, 29 reptiles, six amphibians, and nine fish. Commonly seen animals include mule deer, lizards, and many species of birds. Rare or endangered species include the peregrine falcon, Mexican spotted owl, California condor, desert tortoise, and the Zion snail, found only in Zion.

MOUNTAIN LIONS

Mountain lions have been seen in the park. Attacks are unlikely, and have never been reported in the park. Please watch children closely and never let them run ahead or lag behind. More information is posted at trailheads. Please report any sightings or encounters to a park ranger as soon as possible.

DESERT BIGHORN SHEEP

Desert bighorn sheep are often seen on the east side of the park. Although they naturally shy away from people, some of these animals have grown accustomed to visitors in the park. Please do not approach or feed bighorn sheep.

RESPECT WILDLIFE

Please keep all animals wild and healthy by viewing them from a safe distance. Do not feed or touch wildlife. Store food and trash responsibly.

SICK OR INJURED ANIMALS

Be aware that wild animals can be unpredictable. Do not approach animals or attempt to move sick or injured wildlife. Please report any sick or injured animals to a park ranger.

Emergencies



For 24-hour emergency response, call 911 or 435 772-3322. The Zion Canyon Medical Clinic is located in Springdale near the south entrance to the park. For hours, please call 435 772-3226. The nearest hospitals are in St. George, Cedar City, and Kanab.

Flash Floods



All narrow canyons are potentially hazardous. Flash floods, often caused by storms miles away, are a real danger and can be life threatening. You are assuming a risk when entering a narrow canyon. Your safety is your responsibility.

Watch for indications of a possible flash flood. If you observe any of these signs, seek higher ground immediately:

- Any deterioration in weather conditions
- Build up of clouds or sounds of thunder
- Sudden changes in water clarity from clear to muddy
- Floating debris
- Rising water levels or stronger currents
- Increasing roar of water up canyon



During a flash flood, the water level rises within minutes or even seconds. A flash flood can rush down a canyon in a wall of water twelve feet high or more.



"The squirrel bit me in less than a second." Wild animals can hurt you. Do not feed them.

Safety

Whether hiking, climbing, or driving, your safety depends on your good judgment, adequate preparation, and constant awareness. Your safety is your responsibility.



STEEP CLIFFS

Falls from cliffs on trails have resulted in death. Loose sand or pebbles on stone are very slippery.

Be careful of edges when using cameras or binoculars. Never throw or roll rocks because there may be hikers below.

- Stay on the trail.
- Stay back from cliff edges.
- Observe posted warnings.
- Please watch children.



WATER

The desert is an extreme environment. Carry enough water, one gallon per person per day, and drink it. Water is available at visitor centers, campgrounds, Zion Lodge, and some shuttle stops. Do not drink untreated water.



DRIVING

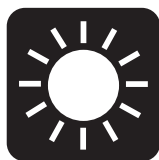
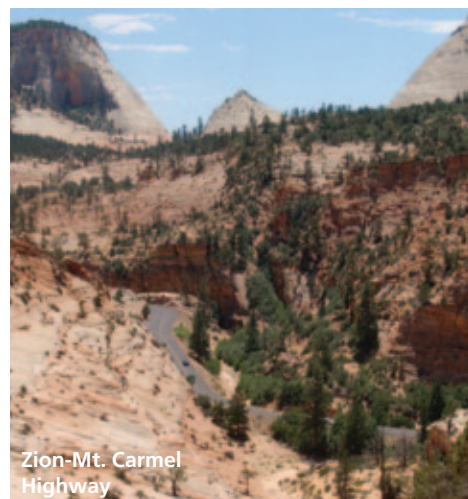
Zion's roads are used by vehicles, bicycles, walkers, and even wildlife. Obey posted speed limits.

Unless otherwise posted, the maximum speed limit is 35 mph (radar enforced).

Seat belts and child safety seats are required for all occupants in a vehicle and failure to use them is a primary offense in the park.

Don't drink and drive. For your safety, rangers enforce laws against alcohol and drug-related driving offenses, including open container violations.

To protect the park's vegetation, please park in designated or posted areas only.



HEAT EXHAUSTION

Heat exhaustion occurs when the body loses more fluid than is taken in. Signs of heat exhaustion include

nausea, vomiting, fatigue, headaches, pale appearance, stomach cramps, and cool clammy skin. If a member of your party begins to experience any of these symptoms, stop your hike immediately. Find a cool, shady area and rest with your feet up to distribute fluids throughout your body. It is important to drink fluids, but it is also important to eat. While suffering from heat exhaustion, drinking fluids without eating can lead to a potentially dangerous condition of low blood salt. If heat exhaustion symptoms persist for more than two hours, seek medical help.

HEAT STROKE

Heat stroke is an advanced stage of heat exhaustion. It is the body's inability to cool itself. Symptoms include confusion, disorientation, behavioral changes, and seizures. If you believe that a member of your party is suffering from heat stroke, it is imperative to cool them using any available means and obtain immediate medical assistance.



HYPOTHERMIA

Hypothermia occurs when the body is cooled to dangerous levels. It is responsible for the

greatest number of deaths among people engaging in outdoor activities. Possible even in warm weather, it often occurs without the victim's awareness. It is a hazard in narrow canyons because immersion in water is the quickest way to lose body heat.

To prevent hypothermia, avoid cotton clothing, it provides no insulation when wet, and eat high energy food before you are chilled. The signs of hypothermia include:

- Uncontrollable shivering
- Stumbling and poor coordination
- Fatigue and weakness
- Confusion or slurred speech

If you recognize any of these signs, stop hiking and immediately replace wet clothing with dry clothing. Warm the victim with your own body and a warm drink, and shelter the individual from breezes. A pre-warmed sleeping bag will also help prevent additional heat loss.



FIREARMS

Firearms are permitted in Zion National Park. As of February 22, 2010, a federal law allows

people who can legally possess firearms under federal, Utah, and local laws, to possess firearms in the park. It is the visitor's responsibility to understand and comply with all applicable Utah, local, and federal firearms laws. Federal law prohibits firearms in certain facilities in Zion National Park; those places are posted with signs. If you have questions, please contact the park at 435 772-3256. The discharge of firearms and hunting within the park are prohibited. Utah State Law prohibits the open carry of loaded firearms on park shuttle buses.

Points of Interest



SHUTTLE STOPS

Travel on the Zion Canyon Scenic Drive from April 1 to October 30 is limited to shuttle buses only. The shuttles provide access to some of Zion National Park's most beautiful views and trails. A round-trip ride on the shuttle takes about 80 minutes.

TEMPLE OF SINAWAVA

The gateway to The Narrows

Restrooms and water. Ranger-led programs. Access to the Riverside Walk and the Virgin River.

BIG BEND

Sweeping bend in the Virgin River with towering cliffs above

Ranger-led programs. Views of the Virgin River, Angels Landing, and Great White Throne.

WEeping ROCK

Dripping springs create hanging gardens

Restrooms. Ranger-led programs. Views of Angels Landing and Big Bend. Access to the Weeping Rock Trail, East Rim Trail, Hidden Canyon Trail, and Observation Point Trail.

THE GROTTTO

Shaded picnic area among cottonwood trees

Restrooms, picnic area, and water. Ranger-led programs. Views of the Virgin River and Angels Landing. Access to The Grotto Trail, Kayenta Trail, and West Rim Trail.

ZION LODGE

Historic lodge nestled in Zion Canyon

Lodging, restaurants, bookstore, restrooms, and water bottle filling station. Trail rides. Ranger-led programs. Views of Lady Mountain, Heaps Canyon, and the Virgin River. Access to the Emerald Pools Trails, The Grotto Trail, and Sand Bench Trail.

COURT OF THE PATRIARCHS

Short and steep trail to viewpoint

Views of Abraham, Isaac, and Jacob Peaks, Mount Moroni, and The Sentinel.

CANYON JUNCTION

The junction of the Zion-Mt. Carmel Highway and the Zion Canyon Scenic Drive

Views of the Virgin River and Zion Canyon. Access to the Pa'rus Trail.

ZION HUMAN HISTORY MUSEUM

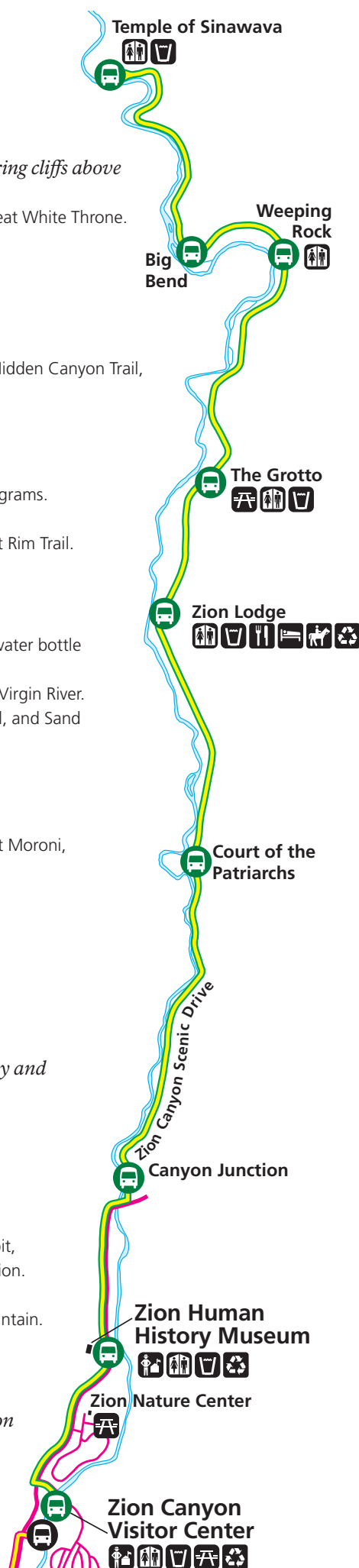
Explore the human history of Zion Canyon

Indoor exhibits, orientation film, rotating art exhibit, restrooms, bookstore, and water bottle filling station. Ranger-led programs. Views of the Towers of the Virgin and Bridge Mountain. Access to the Pa'rus Trail.

ZION CANYON VISITOR CENTER

The starting point for any visit to Zion Canyon

Outdoor exhibits, information desk, backcountry permits, bookstore, restrooms, picnic area, and water bottle filling station. Ranger-led programs. Access to the Pa'rus Trail and Watchman Trail.



ZION-MT. CARMEL HIGHWAY

This 10-mile scenic drive connects the South and East Entrances. From Zion Canyon, the road travels up steep switchbacks, through the historic Zion-Mt. Carmel Tunnel, and emerges on the east side of the park. For large vehicle restrictions, please read page 12.

KOLOB CANYONS ROAD

This five-mile scenic drive starts at the Kolob Canyons Visitor Center, climbs past the spectacular canyons and red rocks of the Kolob Canyons area of the park, and ends at the Timber Creek Overlook.

KOLOB TERRACE ROAD

This steep 20-mile scenic drive starts in the town of Virgin and climbs north from the desert washes into the aspen-covered plateaus of the higher elevations of the park and provides access to Lava Point. Not recommended for vehicles pulling trailers.



ZION HUMAN HISTORY MUSEUM

Indoor exhibits focus on the human history of Zion National Park. A 22-minute orientation film highlights the dramatic landscapes of the park and examines the history of the canyon. Rotating art exhibits feature regional artists. Visit the bookstore for maps, books, and gifts. There are dramatic views of the Towers of the Virgin and Bridge Mountain outside.



ZION CANYON VISITOR CENTER

Located near the South Entrance of the park, this is the place to begin your exploration of Zion Canyon. Park rangers and outdoor exhibits will help you plan your visit and make the most of your time. Inquire at the Zion Canyon Backcountry Desk about permits for backpacking, canyoneering, and other trips into the backcountry. Visit the bookstore for maps, books, and gifts. Outside the visitor center, you can walk along the Virgin River in the shadow of The Watchman to the south.

KOLOB CANYONS VISITOR CENTER

This is the entry point to the Kolob Canyons area of the park. It is located at Exit 40 on Interstate 15, 45 miles north of Springdale and 17 miles south of Cedar City. Park rangers are available to answer questions and issue backcountry permits. Exhibits explore the geology, vegetation, and wildlife of this unique landscape.



The Kolob Arch in the backcountry of the Kolob Canyons area of Zion National Park.

Recreation



CAMPING

Campgrounds in Zion Canyon have restrooms, drinking water, picnic tables, fire grates, and dump stations. All sites are half price for holders of Interagency Senior and Access Passes. There are no showers available within Zion National Park. Pay showers are available in Springdale and east of the park. The availability of these services varies throughout the year.



FIRES

When fire danger is high, all campfires may be prohibited. When permitted, fires are only allowed in fire grates in the campgrounds. Bring or buy firewood. Collecting any type of wood in the park is prohibited.



BICYCLING

Bicycles may travel on roadways and on the Pa'rus Trail. Bicycles are not allowed off roadways or in construction areas. When riding from the South Entrance, use the Pa'rus Trail instead of the main road. Shuttles cannot pass moving bicycles, please pull over and allow them to pass. Do not pass a moving bus. The rules of the road apply to bicycles. Please ride on the right side of the road in single file and wear your helmet. Each shuttle has a rack for at least two bicycles.



CLIMBING

The sandstone cliffs of Zion National Park are famous for big wall climbs. Zion is not a place for inexperienced climbers. Climbing in Zion requires appropriate hardware and advanced technical skills. There are few top roping areas and no sport climbs. Permits are not required for day climbs, but they are required for all overnight bivouacs. Climbing information and route descriptions are available at the Zion Canyon Backcountry Desk in the Zion Canyon Visitor Center.

Some areas and routes are closed each year to climbing from early March through August to protect nesting peregrine falcons. Some areas that are routinely closed to climbing include the Great White Throne, Cable Mountain, Court of the Patriarchs, and Angels Landing. Check at visitor centers or visit www.nps.gov/zion for current closure information.

Campgrounds

	Sites	Fees	Reservations
Watchman Campground	185	\$16 per night \$18 per night for electric hookups \$20 per night for river sites	www.recreation.gov 877 444-6777 Up to six months in advance
South Campground	126	\$16 per night	First-come, first-served
Lava Point Campground no water; pit toilets	6	No fee	First-come, first-served
Group Campsites organized groups of 9 to 40 people	7	\$3 per person per night	www.recreation.gov 877 444-6777

Private campgrounds with showers and hookups are available outside the park. From late November to early March, South Campground is closed and Watchman Campground is first-come, first-served. The number of available campsites may vary throughout the year.



HORSEBACK RIDING

Horses traditionally have been used to explore the terrain of Zion National Park. Guided trips are available starting at the corral at the Emerald Pools Trailhead. For private stock use, see the Backcountry Guide or inquire at visitor centers.



WATERCRAFT

All watercraft use in Zion National Park requires a backcountry permit. Permits are issued only when the river is flowing in excess of 140 cubic feet per second. Inner tubes are not permitted at any time on any watercourse in the park.



HIKING AND CANYONEERING

Hiking in canyons, even short hikes, requires advance planning. Some hikes involve walking in water. Rivers and washes are subject to flash flooding. Know the weather and flash flood potential forecasts before starting your trip. Daily forecasts are posted in park visitor centers. Many canyons require ropes, hardware, and advanced technical skills for rappelling and ascending.



BACKPACKING

Permits are required for all backcountry camping. There is a fee. Permits and hiking information are available at visitor centers. The maximum group size is 12 people. Please read the Backcountry Guide for more information.



BACKCOUNTRY PERMITS

Permits are required for overnight trips, through-hikes of The Narrows and its tributaries, the Subway and Left Fork, Kolob Creek, and all canyons requiring the use of technical equipment. Reservations are available online for many permits at www.nps.gov/zion. Permits must be obtained at the visitor centers before your trip.

Backcountry fees are based on the size of your group:

- \$10 for 1-2 people
- \$15 for 3-7 people
- \$20 for 8-12 people

The maximum group size is 12 people of the same affiliation on the same trail or in the same drainage on the same day. The limit for some canyons is six people.



THE NARROWS

The Virgin River has carved a spectacular gorge in the upper reaches of Zion Canyon—16 miles long, up to 2000-feet deep, and at times only 20 to 30-feet wide. The Narrows, with its soaring walls, sandstone grottos, natural springs, and hanging gardens can be an unforgettable experience. It is not, however, a trip to be underestimated. Hiking The Narrows means hiking in the Virgin River. At least 60 percent of the hike is spent wading, walking, and sometimes swimming in the river. There is no maintained trail because the route is the river. The current is swift, the water may be cold and deep, and the

rocks underfoot are slippery. Flash flooding and hypothermia are constant dangers. Good planning, proper equipment, and sound judgment are essential for a safe and successful trip. Your safety is your responsibility.

There are three ways to hike The Narrows, weather and water conditions permitting.

DAY HIKE FROM THE BOTTOM AND BACK

This round-trip hike can last up to eight hours and is the simplest way to experience The Narrows. Ride the shuttle to the Temple of Sinawava, walk one mile to the end of the paved Riverside Walk, and begin wading up the river. There is no formal destination and you must return the same way you entered. Many hikers try to reach the junction with Orderville Canyon, a tributary creek approximately two hours upstream from the paved trail. A permit is not required and group size limits do not apply. Travel upstream into Orderville Canyon or beyond Big Spring is prohibited.

DAY HIKE FROM TOP TO BOTTOM

This strenuous 16-mile all-day hike requires a permit and a private shuttle to the trailhead. Please see the Backcountry Guide or inquire at the Zion Canyon Backcountry Desk for more information.

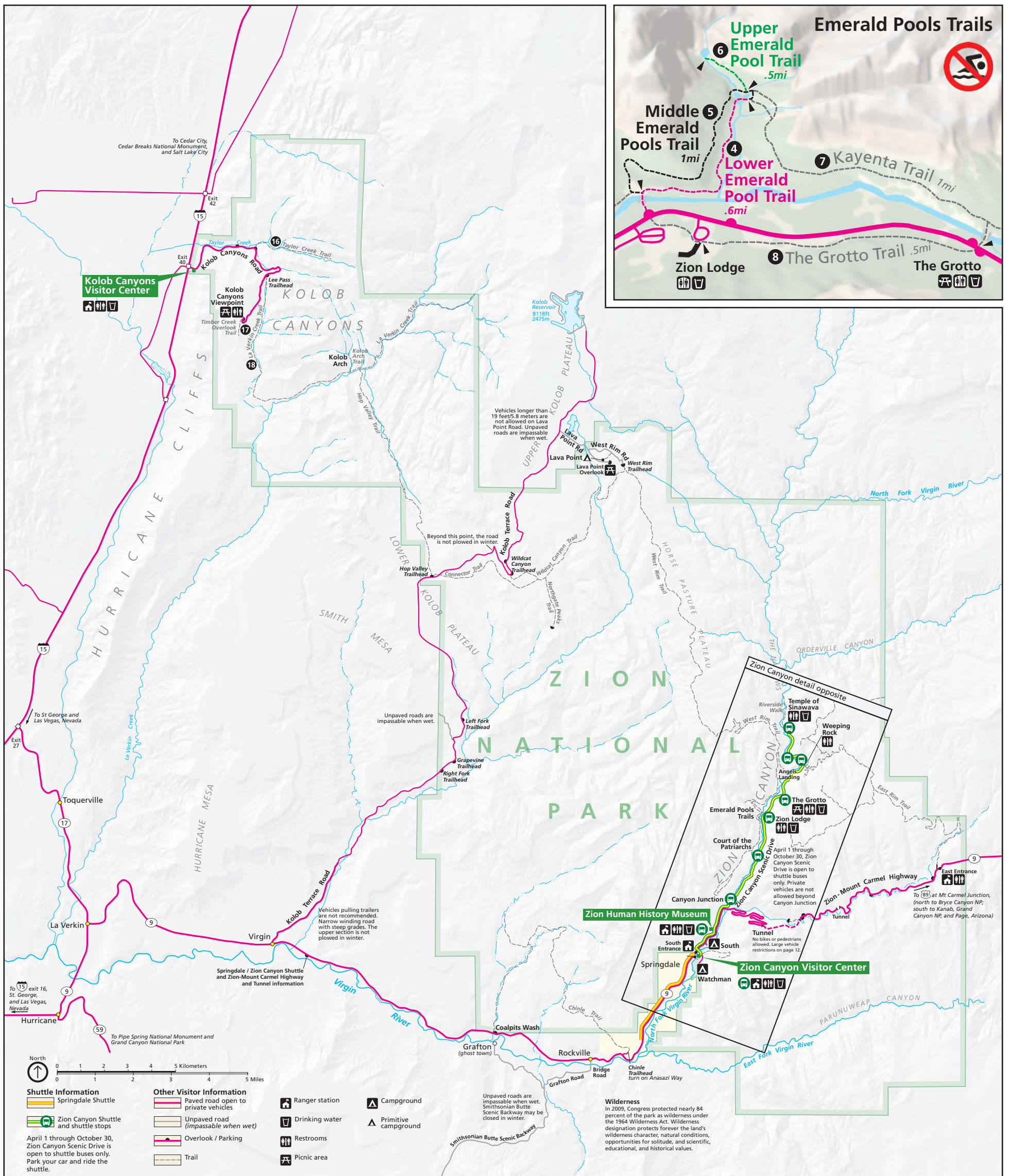
OVERNIGHT HIKE FROM TOP TO BOTTOM

This two-day hike requires a permit and a private shuttle to the trailhead. Maximum stay is one night. Please see the Backcountry Guide or inquire at the Zion Canyon Backcountry Desk for more information.

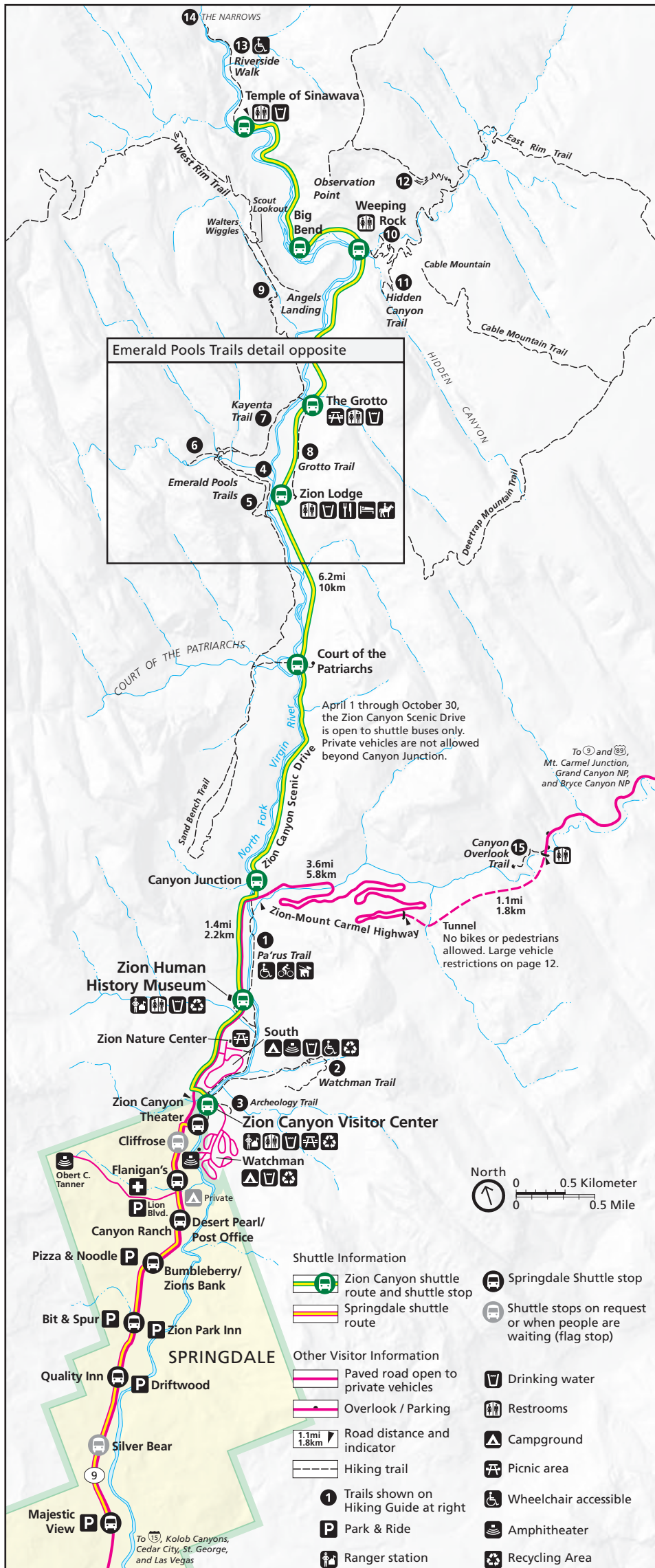
THE NARROWS CHECKLIST

- Obtain weather and flash flood potential forecasts before your trip.
- Wear closed-toe shoes or sturdy boots with ankle support, not sandals or water shoes.
- Take a walking stick. Do not cut tree branches for sticks.
- Children should not hike in the river due to strong currents and deep pools.
- Carry out all trash, including food wrappers, apple cores, fruit peels, and toilet paper.
- Carry one gallon of drinking water per person per day, food, sunglasses, sunscreen, and first aid kit.
- Take a fleece or windbreaker. The Narrows is much cooler than other areas in Zion Canyon.
- Pack your gear in waterproof bags.
- Use the restroom at the Riverside Walk trailhead before hiking. There are no toilets in The Narrows.

Zion National Park



Zion Canyon



Hiking Guide

Hike Location	Round Trip Average time mi / km	Elevation Change ft / m	Description
---------------	---------------------------------	-------------------------	-------------

Easy

1 Pa'rus Trail Zion Canyon Visitor Center	2 hours 3.5 / 5.6	50 / 15	Paved trail follows the Virgin River from the South Campground to Canyon Junction.
3 Archeology Trail Zion Canyon Visitor Center	0.5 hour 0.4 / 0.6	80 / 24	Short, but steep. Starts across from the entrance to the visitor center parking lot. Climbs to the outlines of several prehistoric buildings. Trailside exhibits.
4 Lower Emerald Pool Trail Zion Lodge	1 hour 1.2 / 1.9	69 / 21	Minor drop-offs. Paved trail leads to the Lower Emerald Pool and waterfalls. Connects to the Middle Emerald Pools Trail.
8 The Grotto Trail Zion Lodge The Grotto	0.5 hour 1.0 / 1.6	35 / 11	The trail connects the Zion Lodge to The Grotto. Can be combined with the Middle Emerald Pools and Kayenta Trails to create a 2.5-mile loop.
10 Weeping Rock Trail Weeping Rock	0.5 hour 0.4 / 0.6	98 / 30	Short, but steep. Minor drop-offs. Paved trail ends at a rock alcove with dripping springs. Trailside exhibits.
13 Riverside Walk Temple of Sinawava	1.5 hours 2.2 / 3.5	57 / 17	Minor drop-offs. Paved trail follows the Virgin River along the bottom of a narrow canyon. Trailside exhibits.

Moderate

2 Watchman Trail Zion Canyon Visitor Center	2 hours 2.7 / 4.3	368 / 112	Minor drop-offs. Ends at viewpoint of the Towers of the Virgin, lower Zion Canyon, and Springdale.
5 Middle Emerald Pools Trail Zion Lodge	2 hours 2.0 / 3.2	150 / 46	Long drop-offs. An unpaved climb to the Middle Emerald Pools. Loose sand and rocks on stone are slippery.
6 Upper Emerald Pool Trail Zion Lodge	1 hour 1.0 / 1.6	200 / 61	Minor drop-offs. A sandy and rocky trail that climbs to the Upper Emerald Pool at the base of a cliff.
7 Kayenta Trail The Grotto	2 hours 2.0 / 3.2	150 / 46	Long drop-offs. An unpaved climb to the Emerald Pools. Connects The Grotto to the Emerald Pools Trails.
15 Canyon Overlook Trail Zion-Mt. Carmel Hwy	1 hour 1.0 / 1.6	163 / 50	Long drop-offs, mostly fenced. Rocky and uneven trail ends at viewpoint of Pine Creek Canyon and lower Zion Canyon.
16 Taylor Creek Trail Kolob Canyons Road	4 hours 5.0 / 8.0	450 / 137	Limited to 12 people per group. Follows the Middle Fork of Taylor Creek past two homestead cabins to Double Arch Alcove.
17 Timber Creek Overlook Trail Kolob Canyons Road	0.5 hour 1.0 / 1.6	100 / 30	Follows a ridge to a small peak with views of Timber Creek, Kolob Terrace, and Pine Valley Mountains.

Strenuous

9 Angels Landing via West Rim Trail The Grotto	4 hours 5.4 / 8.7	1488 / 453	Long drop-offs. Not for young children or anyone fearful of heights. Last section is a route along a steep, narrow ridge to the summit.
11 Hidden Canyon Trail Weeping Rock	3 hours 2.4 / 3.9	850 / 259	Long drop-offs. Not for anyone fearful of heights. Follows along a cliff face to the mouth of a narrow canyon.
12 Observation Point via East Rim Trail Weeping Rock	5 hours 8.0 / 12.9	2148 / 655	Long drop-offs. Climbs through Echo Canyon to viewpoint of Zion Canyon. Access to Cable Mountain, Deertrap Mountain, and East Mesa Trails.
14 The Narrows via Riverside Walk Temple of Sinawava	8 hours 9.4 / 15.1	334 / 102	Read page 5 and check conditions at the visitor center before attempting. High water levels can prevent access to The Narrows.
18 Kolob Arch via La Verkin Creek Trail Kolob Canyons Road	8 hours 14.0 / 22.5	699 / 213	Follows Timber and La Verkin Creeks. Connects to the trail to Kolob Arch, one of the world's largest freestanding arches.

Stay on established trails and watch your footing, especially at overlooks and near drop-offs. Avoid cliff edges. Watch children closely. People uncertain about heights should stop if they become uncomfortable. Never throw or roll rocks because there may be hikers below.

Ranger-led Programs

Walks

EAST SIDE EXPERIENCE

1.5 hours, moderate 1-mile hike
Canyon Overlook Parking Area
 Enjoy the views from Canyon Overlook and gain a new perspective on the beauty of Zion.

EMERALD ESCAPE

2 hours, moderate 2-mile hike
Emerald Pools Trailhead
 Experience the splendors found along an ever-changing trail.

FACES AND PLACES IN TIME

1.5 hours, easy 1-mile walk
Zion Lodge Flagpole
 Immerse yourself in the rich history of Zion Canyon on a stunning trail along the Virgin River.

FROM CACTI TO COTTONWOODS

2 hours, moderate 2-mile hike
Visitor Center Shuttle Stop
 Explore the fascinating world of wildflowers, trees, and other plant life.

HIKING THE KAYENTA

2 hours, moderate 1.5-mile hike
The Grotto Shuttle Stop
 Hike amidst the spectacular scenery and discover Zion's unique natural and cultural history.

RIVERSIDE RAMBLE

1.75 hours, easy 2-mile walk
Temple of Sinawava Shuttle Stop
 Discover the striking power and role of water in canyon country.

ROCK AND STROLL

1.25 hours, easy 1-mile walk
Weeping Rock Shuttle Stop
 Follow the Virgin River and unearth the geologic processes that sculpt the scenery.

WALKING THE WATCHMAN

2.5 hours, moderate 2.5-mile hike
Visitor Center Shuttle Stop
 Explore a diverse and beautiful landscape teeming with life.

WHAT'S FLYIN' IN ZION

2 hours, easy 1-mile bird walk
 Locate, identify, and discuss Zion's winged wonders. Make free reservations, in person, no more than three days in advance at the Zion Canyon Visitor Center. Bring binoculars. Ask about accessibility options.

Talks

All talks are on the patio of the Zion Human History Museum and 20 to 30 minutes in length.

ANIMAL ICON

Discover the habits and adaptations of one of Zion's most famous residents.

DESERT STRUGGLES

Uncover the secrets of survival in the harsh desert environment.

FOOTSTEPS IN TIME

Explore the history and culture of Utah's native people.

PIONEER GLIMPSES

Unravel the lifestyles and history of the early residents of Zion Canyon.

STORIES IN STONE

Unearth the past by exploring the fossil record left behind.

WATER, ROCKS, AND TIME

Uncover the geologic story behind the striking scenery.

WINDOWS INTO THE PAST

Discover past events or projects that shaped Zion National Park.

ZION ZOOLOGY

Explore the natural history of several of Zion's most interesting inhabitants.

Evening Programs

Watchman Campground Amphitheater and Zion Lodge Auditorium

Discover what makes Zion such a special place. 45-minute evening programs addressing a myriad of topics. Limited parking is available at Watchman Campground for non-campers. Check the bulletin boards at the visitor center, museum, and campgrounds for program topics.

Drop-In Programs

Stop by anytime between the times listed. Stay for a minute or stay for an hour.

CANVAS OF CLIFFS

Big Bend Shuttle Stop
 Search for peregrines, condors, climbers, and other life on the cliffs and discover the stories of the surrounding peaks. Weather permitting.

RIVER RENDEZVOUS

Temple of Sinawava Shuttle Stop
 Immerse yourself in the grandeur of Zion and discover its unique diversity. The program site is located one-third mile up the Riverside Walk.

Ride with a Ranger Shuttle Tours

Enjoy a unique 2-hour experience on a morning or evening ranger-led shuttle bus tour as you travel the Zion Canyon Scenic Drive. Several stops will provide an intimate look at Zion Canyon. Seating is limited—make free reservations, in person, up to one day in advance at the Zion Canyon Visitor Center. Please arrive 15 minutes prior to departure.

Junior Ranger Program

Junior Ranger Handbooks are available for \$1.00 at visitor center bookstores. Children ages 6 to 12 can earn a badge or patch by completing the handbook, attending at least one ranger-led program, and reviewing their answers with a park ranger. Children under 6 can earn a pin by completing the Lil' Junior Ranger Activity Sheet, available for free at visitor centers and the Zion Human History Museum.



Program Schedule

FRIDAY, APRIL 1

3:30 p.m. Walking the Watchman
 8:30 p.m. Lodge Evening Program

SATURDAY, APRIL 2

11:25 a.m. Animal Icon
 2:25 p.m. Water, Rocks, and Time
 4:00 p.m. Hiking the Kayenta
 8:30 p.m. Lodge Evening Program

SUNDAY, APRIL 3

10:30 a.m.-noon Canvas of Cliffs
 11:25 a.m. Zion Zoology
 2:25 p.m. Stories in Stone
 3:30 p.m. Riverside Ramble

MONDAY, APRIL 4

11:25 a.m. Water, Rocks, and Time
 2:25 p.m. Animal Icon
 3:30 p.m. Walking the Watchman

TUESDAY, APRIL 5

10:00 a.m. Hiking the Kayenta
 11:25 a.m. Footsteps in Time
 2:25 p.m. Pioneer Glimpses

WEDNESDAY, APRIL 6

11:25 a.m. Water, Rocks, and Time
 2:25 p.m. Desert Struggles
 4:00 p.m. Faces and Places in Time

THURSDAY, APRIL 7

11:25 a.m. Windows into the Past
 12:30-2:00 p.m. River Rendezvous
 2:25 p.m. Zion Zoology
 3:00 p.m. Emerald Escape

FRIDAY, APRIL 8

11:25 a.m. Animal Icon

2:25 p.m. Water, Rocks, and Time
 4:00 p.m. From Cacti to Cottonwoods
 8:30 p.m. Lodge Evening Program
 9:00 p.m. Watchman Evening Program

SATURDAY, APRIL 9

2:25 p.m. Zion Zoology
 4:00 p.m. Rock and Stroll
 8:30 p.m. Lodge Evening Program
 9:00 p.m. Watchman Evening Program

SUNDAY, APRIL 10

11:25 a.m. Pioneer Glimpses
 2:25 p.m. Animal Icon
 4:00 p.m. Hiking the Kayenta

MONDAY, APRIL 11

10:00 a.m. Faces and Places in Time
 12:55 p.m. Water, Rocks, and Time
 2:55 p.m. Stories in Stone

TUESDAY, APRIL 12

11:25 a.m. Water, Rocks, and Time
 2:25 p.m. Footsteps in Time
 3:30 p.m. Rock and Stroll

WEDNESDAY, APRIL 13

12:25 p.m. Water, Rocks, and Time
 2:25 p.m. Desert Struggles
 4:00 p.m. From Cacti to Cottonwoods

THURSDAY, APRIL 14

10:00 a.m. Hiking the Kayenta
 12:25 p.m. Water, Rocks, and Time

FRIDAY, APRIL 15

11:25 a.m. Zion Zoology
 2:25 p.m. Water, Rocks, and Time
 4:00 p.m. Emerald Escape

9:00 p.m. Watchman Evening Program

SATURDAY, APRIL 16

10:00-11:30 a.m. Canvas of Cliffs
 11:25 a.m. Zion Zoology
 2:55 p.m. Water, Rocks, and Time
 4:00 p.m. Rock and Stroll
 9:00 p.m. Watchman Evening Program

SUNDAY, APRIL 17

11:25 a.m. Water, Rocks, and Time
 12:30-2:00 p.m. River Rendezvous
 2:25 p.m. Footsteps in Time
 4:00 p.m. Hiking the Kayenta
 9:00 p.m. Watchman Evening Program

MONDAY, APRIL 18

1:55 p.m. Pioneer Glimpses
 3:25 p.m. Zion Zoology
 9:00 p.m. Watchman Evening Program

TUESDAY, APRIL 19

9:00 a.m. Ride with a Ranger
 11:25 a.m. Animal Icon
 12:30-2:00 p.m. River Rendezvous
 2:25 p.m. Water, Rocks, and Time
 4:00 p.m. Emerald Escape
 9:00 p.m. Watchman Evening Program

WEDNESDAY, APRIL 20

9:00 a.m. Ride with a Ranger
 10:00 a.m. Riverside Ramble
 11:25 a.m. Desert Struggles
 2:25 p.m. Windows into the Past
 9:00 p.m. Watchman Evening Program

THURSDAY, APRIL 21

9:00 a.m. Ride with a Ranger
 11:25 a.m. Stories in Stone

2:25 p.m. Footsteps in Time
 4:00 p.m. From Cacti to Cottonwoods
 9:00 p.m. Watchman Evening Program

FRIDAY, APRIL 22

9:00 a.m. East Side Experience
 9:00 a.m. Ride with a Ranger
 11:25 a.m. Zion Zoology
 2:25 p.m. Windows into the Past
 9:00 p.m. Watchman Evening Program

SATURDAY, APRIL 23

9:00 a.m. Ride with a Ranger
 11:25 a.m. Animal Icon
 2:25 p.m. Water, Rocks, and Time
 9:00 p.m. Watchman Evening Program

SUNDAY, APRIL 24

9:00 a.m. Ride with a Ranger
 10:00-11:30 a.m. Canvas of Cliffs
 12:55 p.m. Stories in Stone
 2:25 p.m. Footsteps in Time
 4:00 p.m. Riverside Ramble
 9:00 p.m. Watchman Evening Program

MONDAY, APRIL 25

9:00 a.m. Ride with a Ranger
 9:30 a.m. From Cacti to Cottonwoods
 11 a.m.-12:30 p.m. River Rendezvous
 2:25 p.m. Pioneer Glimpses
 4:00 p.m. Emerald Escape
 9:00 p.m. Watchman Evening Program

TUESDAY, APRIL 26

9:00 a.m. Ride with a Ranger
 9:30 a.m. Hiking the Kayenta
 10:30 a.m.-noon River Rendezvous
 11:25 a.m. Windows into the Past
 1:55 p.m. Zion Zoology

3:25 p.m. Desert Struggles
9:00 p.m. Watchman Evening Program

WEDNESDAY, APRIL 27

9:00 a.m. Ride with a Ranger
10:00 a.m. Faces and Places in Time
11:25 a.m. Stories in Stone
2:25 p.m. Water, Rocks, and Time
5:30 p.m. East Side Experience
9:00 p.m. Watchman Evening Program

THURSDAY, APRIL 28

9:00 a.m. Ride with a Ranger
9:00 a.m. What's Flyin' in Zion
11:25 a.m. Pioneer Glimpses
2:25 p.m. Stories in Stone
4:00 p.m. Rock and Stroll
9:00 p.m. Watchman Evening Program

FRIDAY, APRIL 29

9:00 a.m. Ride with a Ranger
10:00 a.m. Faces and Places in Time
11 a.m.-12:30 p.m. River Rendezvous
11:25 a.m. Pioneer Glimpses
12:55 p.m. Desert Struggles
2:25 p.m. Water, Rocks, and Time
4:00 p.m. Emerald Escape
9:00 p.m. Watchman Evening Program

SATURDAY, APRIL 30

9:00 a.m. Ride with a Ranger
10:00-11:30 a.m. Canvas of Cliffs
10:00 a.m. Riverside Ramble
11:25 a.m. Desert Struggles
2:25 p.m. Water, Rocks, and Time
4:00 p.m. Faces and Places in Time
9:00 p.m. Watchman Evening Program

SUNDAY, MAY 1

9:00 a.m. Ride with a Ranger
11 a.m.-12:30 p.m. River Rendezvous
12:55 p.m. Footsteps in Time
2:25 p.m. Water, Rocks, and Time
3:30 p.m. Riverside Ramble
9:00 p.m. Watchman Evening Program

MONDAY, MAY 2

9:00 a.m. Ride with a Ranger
9:30 a.m. Walking the Watchman
11 a.m.-12:30 p.m. River Rendezvous
11:25 a.m. Windows into the Past
2:25 p.m. Water, Rocks, and Time
4:00 p.m. Faces and Places in Time
9:00 p.m. Watchman Evening Program

TUESDAY, MAY 3

9:00 a.m. Ride with a Ranger
10:00-11:30 a.m. Canvas of Cliffs
10:30 a.m. Riverside Ramble
11:25 a.m. Desert Struggles
2:25 p.m. Windows into the Past
4:00 p.m. Hiking the Kayenta
9:00 p.m. Watchman Evening Program

WEDNESDAY, MAY 4

9:00 a.m. Ride with a Ranger
9:30 a.m. From Cacti to Cottonwoods
10:00-11:30 a.m. Canvas of Cliffs
11:25 a.m. Desert Struggles
2:25 p.m. Footsteps in Time
4:00 p.m. Hiking the Kayenta
9:00 p.m. Watchman Evening Program

THURSDAY, MAY 5

8:30 a.m. What's Flyin' in Zion
9:00 a.m. Ride with a Ranger
10:00-11:30 a.m. Canvas of Cliffs
11:25 a.m. Zion Zoology
12:55 p.m. Stories in Stone
2:25 p.m. Water, Rocks, and Time
4:00 p.m. Rock and Stroll
9:00 p.m. Watchman Evening Program

FRIDAY, MAY 6

9:00 a.m. Ride with a Ranger
10:00 a.m. Riverside Ramble
11:25 a.m. Pioneer Glimpses
2:25 p.m. Zion Zoology

4:00 p.m. Rock and Stroll
9:00 p.m. Watchman Evening Program

SATURDAY, MAY 7

9:00 a.m. Ride with a Ranger
9:30 a.m. Hiking the Kayenta
10:00-11:30 a.m. Canvas of Cliffs
11:25 a.m. Desert Struggles
12:55 p.m. Water, Rocks, and Time
2:25 p.m. Stories in Stone
5:00 p.m. From Cacti to Cottonwoods
9:00 p.m. Watchman Evening Program

SUNDAY, MAY 8

9:00 a.m. Ride with a Ranger
10:30 a.m.-noon River Rendezvous
11:25 a.m. Animal Icon
12:55 p.m. Windows into the Past
2:25 p.m. Water, Rocks, and Time
4:30 p.m. Emerald Escape
9:00 p.m. Lodge Evening Program
9:00 p.m. Watchman Evening Program

MONDAY, MAY 9

9:00 a.m. Ride with a Ranger
9:30-11:00 a.m. Canvas of Cliffs
10:00 a.m. Riverside Ramble
11:25 a.m. Pioneer Glimpses
2:25 p.m. Water, Rocks, and Time
5:00 p.m. Emerald Escape
9:00 p.m. Lodge Evening Program
9:00 p.m. Watchman Evening Program

TUESDAY, MAY 10

9:00 a.m. Ride with a Ranger
9:30 a.m. Walking the Watchman
9:30-11:00 a.m. Canvas of Cliffs
11:25 a.m. Water, Rocks, and Time
12:55 p.m. Zion Zoology
2:25 p.m. Stories in Stone
5:00 p.m. Hiking the Kayenta
9:00 p.m. Lodge Evening Program
9:00 p.m. Watchman Evening Program

WEDNESDAY, MAY 11

9:00 a.m. Ride with a Ranger
10:00 a.m. Riverside Ramble
11:25 a.m. Water, Rocks, and Time
12:55 p.m. Desert Struggles
2:25 p.m. Windows into the Past
5:00 p.m. Faces and Places in Time
9:00 p.m. Lodge Evening Program
9:00 p.m. Watchman Evening Program

THURSDAY, MAY 12

9:00 a.m. From Cacti to Cottonwoods
9:00 a.m. Ride with a Ranger
9:30-11:00 a.m. Canvas of Cliffs
11:25 a.m. Water, Rocks, and Time
12:55 p.m. Footsteps in Time
2:25 p.m. Desert Struggles
5:00 p.m. Hiking the Kayenta
9:00 p.m. Lodge Evening Program
9:00 p.m. Watchman Evening Program

FRIDAY, MAY 13

8:30 a.m. What's Flyin' in Zion
9:00 a.m. Ride with a Ranger
11 a.m.-12:30 p.m. River Rendezvous
11:25 a.m. Animal Icon
12:55 p.m. Water, Rocks, and Time
2:25 p.m. Zion Zoology
5:00 p.m. Rock and Stroll
9:00 p.m. Lodge Evening Program
9:00 p.m. Watchman Evening Program

SATURDAY, MAY 14

9:00 a.m. Ride with a Ranger
10:00 a.m. Riverside Ramble
11:25 a.m. Water, Rocks, and Time
12:55 p.m. Pioneer Glimpses
2:25 p.m. Stories in Stone
5:00 p.m. Hiking the Kayenta
9:00 p.m. Lodge Evening Program
9:00 p.m. Watchman Evening Program

SUNDAY, MAY 15

9:00 a.m. Ride with a Ranger

10:30 a.m.-noon River Rendezvous
12:55 p.m. Zion Zoology
2:25 p.m. Water, Rocks, and Time
5:00 p.m. Emerald Escape
9:00 p.m. Lodge Evening Program
9:30 p.m. Watchman Evening Program

MONDAY, MAY 16

9:00 a.m. Ride with a Ranger
9:00-10:30 a.m. Canvas of Cliffs
9:30 a.m. Riverside Ramble
12:55 p.m. Windows into the Past
2:25 p.m. Water, Rocks, and Time
5:00 p.m. Emerald Escape
9:00 p.m. Lodge Evening Program
9:30 p.m. Watchman Evening Program

TUESDAY, MAY 17

9:00 a.m. Ride with a Ranger
9:00 a.m. Walking the Watchman
11:25 a.m. Stories in Stone
12:55 p.m. Desert Struggles
2:25 p.m. Water, Rocks, and Time
9:00 p.m. Lodge Evening Program
9:30 p.m. Watchman Evening Program

WEDNESDAY, MAY 18

9:00 a.m. Ride with a Ranger
10:00 a.m. Riverside Ramble
11:25 a.m. Windows into the Past
12:55 p.m. Zion Zoology
2:25 p.m. Footsteps in Time
5:30 p.m. Rock and Stroll
9:00 p.m. Lodge Evening Program
9:30 p.m. Watchman Evening Program

THURSDAY, MAY 19

8:30 a.m. What's Flyin' in Zion
9:00 a.m. Ride with a Ranger
11:25 a.m. Water, Rocks, and Time
12:55 p.m. Desert Struggles
5:00 p.m. Hiking the Kayenta
9:00 p.m. Lodge Evening Program
9:30 p.m. Watchman Evening Program

FRIDAY, MAY 20

9:00 a.m. Faces and Places in Time
9:00 a.m. Ride with a Ranger
10:30 a.m.-noon River Rendezvous
11:25 a.m. Zion Zoology
12:55 p.m. Stories in Stone
2:25 p.m. Footsteps in Time
5:30 p.m. Emerald Escape
6:30 p.m. Ride with a Ranger
9:00 p.m. Lodge Evening Program
9:30 p.m. Watchman Evening Program

SATURDAY, MAY 21

9:00-10:30 a.m. Canvas of Cliffs
9:00 a.m. Ride with a Ranger
10:00 a.m. Riverside Ramble
12:55 p.m. Water, Rocks, and Time
2:55 p.m. Pioneer Glimpses
6:00 p.m. Rock and Stroll
6:30 p.m. Ride with a Ranger
9:00 p.m. Lodge Evening Program
9:30 p.m. Watchman Evening Program

SUNDAY, MAY 22

9:00 a.m. From Cacti to Cottonwoods
9:00 a.m. Ride with a Ranger
9:00 a.m. Zion Zoology
2:25 p.m. Water, Rocks, and Time
5:30 p.m. Emerald Escape
6:30 p.m. Ride with a Ranger
9:00 p.m. Lodge Evening Program
9:30 p.m. Watchman Evening Program

MONDAY, MAY 23

9:00-10:30 a.m. Canvas of Cliffs
9:00 a.m. Ride with a Ranger
10:30 a.m.-noon River Rendezvous
12:55 p.m. Windows into the Past
2:25 p.m. Water, Rocks, and Time
5:30 p.m. Hiking the Kayenta
6:30 p.m. Ride with a Ranger
9:00 p.m. Lodge Evening Program
9:30 p.m. Watchman Evening Program

TUESDAY, MAY 24

9:00-10:30 a.m. Canvas of Cliffs
9:00 a.m. Ride with a Ranger
10:00 a.m. Riverside Ramble
11:25 a.m. Stories in Stone
12:55 p.m. Desert Struggles
2:25 p.m. Water, Rocks, and Time
6:30 p.m. Ride with a Ranger
9:00 p.m. Lodge Evening Program
9:30 p.m. Watchman Evening Program

WEDNESDAY, MAY 25

9:00 a.m. Ride with a Ranger
9:00 a.m. Walking the Watchman
11:25 a.m. Windows into the Past
12:55 p.m. Zion Zoology
2:25 p.m. Water, Rocks, and Time
6:00 p.m. Emerald Escape
6:30 p.m. Ride with a Ranger
9:00 p.m. Lodge Evening Program
9:30 p.m. Watchman Evening Program

THURSDAY, MAY 26

8:00 a.m. What's Flyin' in Zion
9:00-10:30 a.m. Canvas of Cliffs
9:00 a.m. Ride with a Ranger
11:25 a.m. Water, Rocks, and Time
12:55 p.m. Desert Struggles
2:25 p.m. Pioneer Glimpses
6:00 p.m. Hiking the Kayenta
6:30 p.m. Ride with a Ranger
9:00 p.m. Lodge Evening Program
9:30 p.m. Watchman Evening Program

FRIDAY, MAY 27

9:00 a.m. Faces and Places in Time
9:00 a.m. Ride with a Ranger
10:30 a.m.-noon River Rendezvous
11:25 a.m. Zion Zoology
12:55 p.m. Stories in Stone
2:25 p.m. Footsteps in Time
6:00 p.m. Emerald Escape
6:30 p.m. Ride with a Ranger
9:00 p.m. Lodge Evening Program
9:30 p.m. Watchman Evening Program

SATURDAY, MAY 28

9:00-10:30 a.m. Canvas of Cliffs
9:00 a.m. Ride with a Ranger
9:30 a.m. Riverside Ramble
12:55 p.m. Water, Rocks, and Time
2:25 p.m. Pioneer Glimpses
6:30 p.m. Ride with a Ranger
6:30 p.m. Rock and Stroll
9:00 p.m. Lodge Evening Program
9:30 p.m. Watchman Evening Program

SUNDAY, MAY 29

9:00 a.m. Ride with a Ranger
10:30 a.m.-noon River Rendezvous
12:55 p.m. Zion Zoology
2:25 p.m. Water, Rocks, and Time
6:00 p.m. Hiking the Kayenta
6:30 p.m. Ride with a Ranger
9:00 p.m. Lodge Evening Program
9:30 p.m. Watchman Evening Program

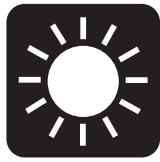
MONDAY, MAY 30

9:00-10:30 a.m. Canvas of Cliffs
9:00 a.m. Ride with a Ranger
9:30 a.m. Riverside Ramble
12:55 p.m. Windows into the Past
2:25 p.m. Water, Rocks, and Time
6:00 p.m. Emerald Escape
6:30 p.m. Ride with a Ranger
9:00 p.m. Lodge Evening Program
9:30 p.m. Watchman Evening Program

TUESDAY, MAY 31

9:00 a.m. Ride with a Ranger
10:30 a.m.-noon River Rendezvous
11:25 a.m. Stories in Stone
12:55 p.m. Desert Struggles
2:25 p.m. Water, Rocks, and Time
6:00 p.m. Faces and Places in Time
6:30 p.m. Ride with a Ranger
9:00 p.m. Lodge Evening Program
9:30 p.m. Watchman Evening Program

Weather



Be prepared for a wide range of weather conditions. In spring, wet weather is not unusual, but warm, sunny weather is typical. Maximum temperatures rarely exceed 90°F/32°C, however temperatures in the park can vary dramatically with changes in elevation and the time of day. Day and night temperatures can differ by over 30°F/17°C. Mornings and evenings can be cool. Consider dressing in layers to prepare for changes in temperature.

Precipitation peaks in March. High water levels due to snowmelt often continue into late May. Abundant wildflowers bloom from April through June and peak in May.

Month	J	F	M	A	M	J	J	A	S	O	N	D
Temperature (°F)												
Normal daily max	52	57	63	73	83	93	100	97	91	78	63	53
Normal daily min	29	31	36	43	52	60	68	66	60	49	37	30
Extreme high	71	78	86	94	102	114	115	111	110	97	83	71
Extreme low	-2	4	12	23	22	40	51	50	33	23	13	6
Days above 90°F	0	0	0	1	8	21	30	28	18	3	0	0
Days below 32°F	19	14	10	3	0	0	0	0	0	1	9	18
Precipitation (inches)												
Normal	1.6	1.6	1.7	1.3	0.7	0.6	0.8	1.6	0.8	1.0	1.2	1.5
Maximum	7.5	6.7	7.1	4.4	3.0	4.0	3.6	4.8	6.7	3.3	3.2	4.3
Max 24 hour	1.6	1.3	0.9	1.2	1.8	2.2	1.1	1.6	1.4	1.3	1.3	2.0
Maximum snowfall	26	18	14	3	T	0	0	0	T	1	5	21
Days w/ precipitation	7	7	8	6	5	3	5	6	4	4	5	6
# of thunderstorms	0	0	0	1	4	5	14	15	5	2	0	0

Temperatures in the Kolob Canyons area may be five to ten degrees cooler than Zion Canyon.

Sun and Moon

Date	Sunrise	Sunset
April 1	7:18 a.m.	7:54 p.m.
April 15	6:58 a.m.	8:07 p.m.
May 1	6:38 a.m.	8:21 p.m.
May 15	6:24 a.m.	8:34 p.m.
June 1	6:13 a.m.	8:47 p.m.

Full Moon

April 17
May 17

Environmental Impact



Zion National Park is much more than just a recreational destination. It is a sanctuary of natural and cultural resources.

Conserving this heritage is a task that the National Park Service cannot accomplish alone. All of us serve a critical role in maintaining Zion's sanctuary for the future. Please respect your national park and the experiences of others.

Carry all of your trash out of the park, including toilet paper.

Please stay on marked trails. Hiking off trails can lead to loss of vegetation, soil compaction, erosion, and unsightly scars on the landscape.

Please park in designated parking spaces only. Fines can be as high as \$250.

It is illegal to remove anything from Zion National Park. Leave the flowers, rocks, and anything else that you might find for others to enjoy.

Feeding, harming, or capturing wild animals is illegal and can cause injury or death to the animal. Animals can become aggressive beggars when fed.

Soundscapes, or sound environments, are an important natural feature of the park. Be aware of the noise that you make, so that others may enjoy the peace and solitude of the park. Please travel quietly and limit the size of your group.

towers, Trombe wall heating, and a roof-mounted photovoltaic system reduce energy use by more than 70 percent and prevent the release of 181 tons of CO².

SOLAR POWER

Solar power provides clean energy for Zion National Park. In 2010, large photovoltaic systems were installed at the Kolob Canyons Visitor Center, the Emergency Operations Center, and Zion Headquarters. Zion now generates 25 percent of its power in the park through renewable means. Other solar systems power two remote ranger cabins and three park entrance stations.

RECYCLING AND TRASH

Zion National Park works closely with the community to provide recycling for visitors. With help from visitors, Zion kept over 90,000 lbs of waste from the landfills in 2010. The recycling program provides disposal for glass, plastic, aluminum, paper, and most other excess material. Participate in recycling efforts by using the available recycle bins inside the park and in local communities.

WATER BOTTLE FILLING STATIONS

There are several water bottle filling stations located throughout the park. To reduce waste, the sale of disposable plastic water bottles is prohibited in Zion Canyon. Help with this initiative by bringing a reusable water bottle with you and using it after you leave. Water bottle filling stations are located at the Zion Canyon Visitor Center, Zion Human History Museum, Zion Lodge, and Temple of Sinawava.



ZION CANYON SHUTTLE SYSTEM

The shuttle system was created to reduce traffic congestion, parking conflicts, pollution, noise, and resource damage. Each full shuttle replaces 28 cars. The shuttles reduce the number of visitor vehicle miles traveled per day by over 50,000 and reduce CO² emissions by over 12 tons per day.

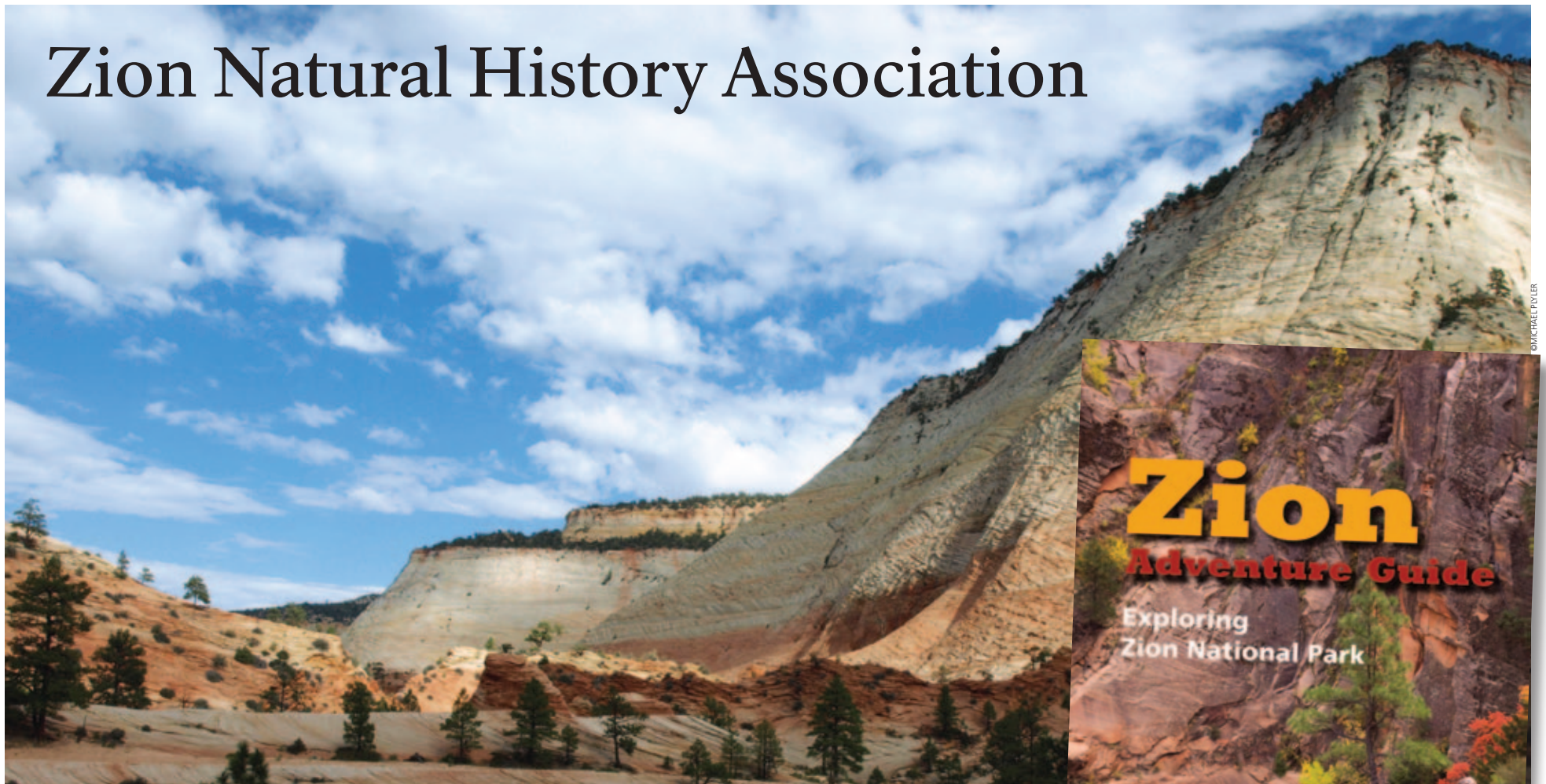
ZION CANYON VISITOR CENTER

The Zion Canyon Visitor Center is a sustainable building that incorporates the area's natural features and energy-efficient building concepts into an attractive design, saving energy and operating expenses while protecting the environment. Natural lighting and ventilation, passive downdraft cool



The Zion Canyon Visitor Center is an excellent example of sustainable design.

Zion Natural History Association



The Zion Natural History Association is a non-profit organization that began in 1929 to support education, research, publications, and other programs for the benefit of Zion National Park, Cedar Breaks National Monument, and Pipe Spring National Monument. Financial support by ZNHA members, combined with sales from our bookstores, provides parks with approximately \$600,000 in annual aid.

ZION CANYON FIELD INSTITUTE

The Zion Canyon Field Institute educates and inspires visitors about the greater Zion National Park ecosystem and environment. ZCFI is the educational division of the non-profit cooperating association Zion Natural History Association. These workshops take

April 1-2	Lytle Preserve
April 8	Mojave Wildflowers
April 9	Zion Geology
April 14	Thursday Trek
April 15-17	Zion through the Lens
April 23	Zion's Low Desert Wildflowers
April 27	Wednesday Naturalist Walk
April 30	Plein Air Painting
May 4	Wednesday Naturalist Walk
May 5	Thursday Trek
May 7	Native Plants & Xeriscaping
May 13	Kolob Wildflowers
May 18	Kolob Geology
May 20	Rim to Floor
May 21	Hanging Gardens of Zion
May 28	Rim to Floor

All classes include moderate to strenuous hiking. Most classes include an indoor component such as a lecture, slide presentation, demonstration, or time to examine animal or plant specimens.

place in and around Zion National Park, Cedar Breaks National Monument, and Pipe Spring National Monument.

OUTDOOR LEARNING ADVENTURES

Hike to a hanging garden where vibrant columbine grow next to scarlet monkey flowers. Relax while a geologist explains the wonders of Zion in a small group setting. Enjoy a discussion by the Virgin River about water issues in the West. Wade into The Narrows and plunge into a service project to keep it pristine. These are just a few of the experiences that you can enjoy during our workshops.

SERVICE PROJECTS

Participants have the opportunity to get a backstage view of Zion, learn intensively about a single subject, and contribute to a project that benefits the park.

PRIVATE WORKSHOPS

Our Custom Explore Zion program provides private workshops for small groups scheduled at your convenience.

REGISTRATION

Pick up the course schedule at any of the park's bookstores. To register for a course, please visit www.zionpark.org, call 435 772-3264 or 800 635-3959, or

stop by the Zion Canyon Visitor Center Bookstore. Fees for one-day workshops are \$45 to \$60 per day.

MEMBERSHIP

Become a member of ZNHA and enjoy benefits for yourself today, while you help Zion tomorrow. ZNHA supports the educational outreach and the Junior Ranger programs for youth, publishes books on Zion, contributes to park ranger-led programs, and provides free visitor information about the park.

Join us as a member and receive a twenty-percent discount on all purchases at ZNHA bookstores and many ZCFI workshops. Members also receive discounts at participating associations, our quarterly e-newsletter, and the bi-annual *Sojourns* publication. Most importantly, your membership helps ensure future educational and research activities in Zion National Park.

MEMBERSHIP LEVEL OPTIONS

- Individual *Sojourns* \$45
- Family *Sojourns* \$60
- Contributor \$100
- Advocate \$250
- Lifetime \$500

ZION TRIP PLANNING PACKAGE

Plan your vacation to Zion National Park with our hand-selected publications. Includes the books: *Zion: Sanctuary in the Desert*, *Zion Shuttle Guide*, *Zion Adventure Guide*, *Introduction to the Geology of Zion National Park*, and a *Trails Illustrated Map*. A \$46.33 value for only \$34.95. All books are also available for individual purchase.

ZION NATIONAL PARK ORIENTATION FILM

Enjoy the official Zion National Park orientation film in your own living room. Learn about plants, animals, geology, park history, and what to see and do in Zion National Park. DVD, 22 minutes, for \$14.95.

MAPS OF ZION

The bookstore sells a wide variety of topographic maps, geologic maps, and maps on CD.

To find out more about the programs and publications available through the Zion Natural History Association, visit www.zionpark.org or call 800 635-3959.

Transportation

Shuttle Schedule

	Spring 4/01 to 5/21	Summer 5/22 to 9/10	Fall 9/11 to 10/30
Zion Canyon Shuttle			
Express Bus from Zion Canyon Visitor Center	6:45 a.m.	5:45 a.m.	6:45 a.m.
First Bus from Zion Canyon Visitor Center	7:00 a.m.	6:30 a.m.	7:00 a.m.
Last Bus to Springdale Shuttle from Temple of Sinawava from Zion Lodge	9:14 p.m. 9:30 p.m.	10:14 p.m. 10:30 p.m.	9:14 p.m. 9:30 p.m.
Last Bus from Zion Canyon Visitor Center from Temple of Sinawava	9:30 p.m. 10:00 p.m.	10:30 p.m. 11:00 p.m.	9:30 p.m. 10:00 p.m.
Springdale Shuttle			
Express Bus from Majestic View Lodge <i>All stops except Zion Canyon Theatre</i>	6:35 a.m.	5:35 a.m.	6:35 a.m.
First Bus from Majestic View Lodge from Zion Canyon Theatre	7:00 a.m. 7:15 a.m.	6:45 a.m. 7:00 a.m.	7:00 a.m. 7:15 a.m.
Last Bus to Zion Canyon Shuttle from Majestic View Lodge	9:00 p.m.	10:00 p.m.	9:00 p.m.
Last Bus from Zion Canyon Theatre from Majestic View Lodge	10:00 p.m. 10:15 p.m.	11:00 p.m. 11:15 p.m.	10:00 p.m. 10:15 p.m.

The average wait for a shuttle bus is fifteen minutes or less. The wait is usually shorter during peak hours. The summer shuttles run at thirty-minute intervals from 9:00 p.m. to 10:30 p.m.

Large Vehicles



The Zion-Mt. Carmel Tunnel connects Zion Canyon to the east side of the park. It was built in the 1920s when large vehicles were less common. Vehicles sized 11'4" in height or 7'10" in width, or larger, require one-lane traffic control through the tunnel. Because of the dimensions, large vehicles cannot travel in a single lane through the tunnel. Nearly all RVs, buses, trailers, fifth-wheels, dual-wheel trucks, campers, and boats require traffic control.



TUNNEL TRAFFIC CONTROL

Visitors requiring traffic control through the tunnel must pay a \$15 fee per vehicle in addition to the entrance fee. Pay this fee at the park entrance station before driving to the tunnel. The fee is good for two trips

The printing of this newspaper was made possible by the Zion Natural History Association.



Printed with
SOY INK

Printed on recycled paper. Please recycle again.

12 Map and Guide

through the tunnel for the same vehicle during a seven-day period. An escort vehicle will not guide your vehicle through the tunnel. Rangers will stop oncoming traffic and you will drive down the center of the road. We apologize for any delays associated with this safety precaution.

Large vehicles may only travel through the tunnel from:

- March 13 to April 23
from 8:00 a.m. to 7:00 p.m.
- April 24 to September 10
from 8:00 a.m. to 8:00 p.m.



PROHIBITED VEHICLES

Bicycles and pedestrians are not permitted in the tunnel. Vehicles not permitted in the tunnel include the following:

- Vehicles over 13'1" tall
- Semi-trucks and commercial vehicles
- Vehicles carrying hazardous materials
- Vehicles weighing more than 50,000 lbs
- Combined vehicles over 50' long



ZION CANYON SHUTTLE

The Zion Canyon Scenic Drive is accessible by shuttle bus only from April 1 to October 30. The buses are accessible and also have room for backpacks, climbing gear, at least two bicycles, and other equipment. Buses run throughout the day. The shuttles are free and you may get on and off as often as you like. Pets are not allowed.

SPRINGDALE SHUTTLE

In coordination with the Zion Canyon Shuttle, the Springdale Shuttle will pick up and drop off passengers in the town of Springdale. The closest stop to the Zion Canyon Visitor Center is located near the pedestrian entrance to the park.



PARKING

Parking areas in the park are usually full from 10:00 a.m. to 3:00 p.m. To avoid delays at the entrance station and limited available parking, park in Springdale and ride the free shuttle to the pedestrian entrance of the park. Shuttles pick up and drop off at nine shuttle stops in town. If you are staying overnight in Springdale, leave your vehicle and take the shuttle. In addition, groups of one or two people can save on their entrance fee at the pedestrian entrance. One person gets in at the individual rate of \$12 and two

people for \$24. A group or family of three or more will not be charged more than the \$25 per vehicle fee.

Improper parking is unsafe, can damage park resources, and is discourteous to other visitors. Please park in designated parking spaces only. Parking regulations will be strictly enforced with citations based on violations of signed no parking areas, traffic obstruction, and damage to resources or government property. Please park responsibly.



AUTOMOBILES

Travel in Zion Canyon from April 1 to October 30 is by shuttle bus only. Only the Zion Canyon Scenic Drive is closed to private vehicles. The Zion-Mt. Carmel Highway through the park is open to private vehicles.



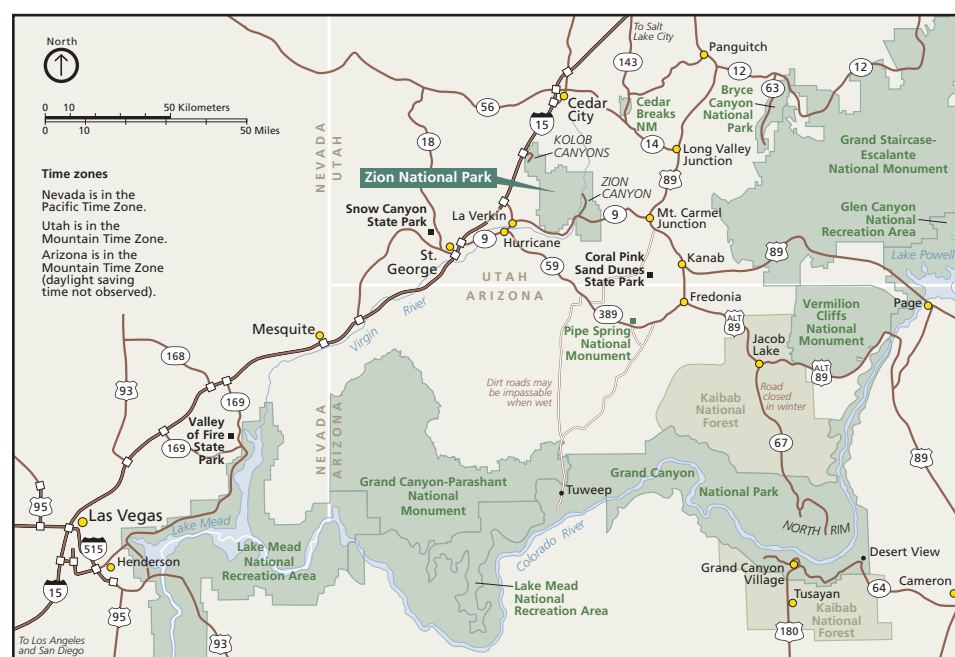
PRIVATE TAXIS

You may choose to start your hiking trip in a different location than your destination. Private shuttle and taxi services are available.



OTHER VEHICLES

Other vehicles such as ATVs and OHVs are not permitted in Zion National Park.



If your vehicle is 11'4" (3.4 meters) tall or taller or 7'10" (2.4 meters) wide or wider, including mirrors, awnings, and jacks, you will need one-lane traffic control through the tunnel.

