



## Zion Map & Guide

The official guide  
to Zion National Park  
June – August 2009



## How to Use the Shuttle

The Zion Canyon Scenic Drive is accessible by shuttle bus only. *Private vehicles are not allowed.* It's easy to visit this part of the park—just hop on a free bus and let us do the driving.

### Two Routes

The Springdale route will take you from town to the park entrance and visitor center. The Zion Canyon route starts at the visitor center and goes up the six-mile-long Zion Canyon Scenic Drive. A round trip lasts 90 minutes. Buses run from dawn to after dark as often as every seven minutes. See page 12 for shuttle schedule. Buses are fully accessible. Pets are not allowed.

### Plan Your Time

Use the exhibits at the Zion Canyon Visitor Center to plan your visit based on your time (less than 3 hours or more than 3 hours) and your interests (sightseeing, hiking, and more). Check the schedule of ranger-led activities on page four and the park bookstore for maps and books to enhance your visit.

### Climate Friendly

The Zion Canyon Shuttle System started in 2000 to reduce traffic congestion, parking conflicts, pollution, noise, and resource damage. It worked. Each full shuttle replaces 28 cars. In 2008, the shuttles reduced the number of visitor vehicle miles traveled per day by 50,385 and reduced CO<sub>2</sub> emissions by 24,201 pounds (12 tons) per day.

## Where to Park

### Park In Springdale

Parking inside the park is limited, congested, and full between 10 am and 3 pm. To avoid wasting time searching for a parking space, simply park in Springdale and ride the free shuttle to the park. Shuttles run from sunup to late in the evening from nine shuttle stops throughout town. If staying overnight in Springdale, leave your car at your lodging and take the shuttle.

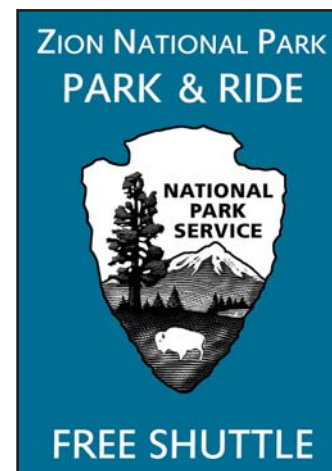
### Save Time and Money

There is always a line at the vehicle entrance and waits can be long. Ride the shuttle to the pedestrian entrance where the line is short and you can enter the park faster. In addition, groups of one or two people can

save on their entrance fee at the pedestrian entrance. One person gets in at the individual rate of \$12 or two for \$24. A group or family of three or more will not be charged more than the \$25 per vehicle fee.

### Park Responsibly

Improper parking is not safe, can damage park resources, and is discourteous to others. Please park in designated parking places. Because illegal parking is on the rise, parking regulations will be strictly enforced with citations based on violations of signed no parking areas, traffic obstruction, or damage to resources or government property. Park responsibly and avoid a ticket.



Park in Springdale where you see these signs. A shuttle stop is not far away.

## Trail Maps, Hiking Guide, and Shuttle Schedule Inside

### Visitor Center Hours

#### June 1 – September 7

Zion Canyon	8 am – 8 pm
• Permits	7 am – 8 pm
History Museum	9 am – 7 pm
Kolob Canyons	8 am – 6 pm

#### September 8 – October 12

Zion Canyon	8 am – 6 pm
• Permits	7 am – 6 pm
History Museum	9 am – 6 pm
Kolob Canyons	8 am – 5 pm

#### October 13 – November 29

Zion Canyon	8 am – 5 pm
• Permits	8 am – 4:30 pm
History Museum	10 am – 5 pm
Kolob Canyons	8 am – 4:30 pm

### Nature Center

#### May 23 – September 6

Jr. Ranger Program 9 am & 1:30 pm

### Emergencies

Call 911 or 435 772-3322 twenty-four hours a day or contact a park ranger.

### Lost and Found

Report at any park visitor center or museum.



National Park Service  
U.S. Department of the Interior

#### Zion National Park

Superintendent Jock Whitworth

#### Mailing Address

Zion National Park  
Springdale, Utah 84767

#### Web Site

[www.nps.gov/zion](http://www.nps.gov/zion)

#### Phone

435 772-3256  
Fax 435 772-3426  
Backcountry Information 435 772-0170

#### E-mail

[ZION\\_park\\_information@nps.gov](mailto:ZION_park_information@nps.gov)

#### Employment Information

[www.usajobs.opm.gov](http://www.usajobs.opm.gov). Seasonal jobs are listed at [www.sep.nps.gov](http://www.sep.nps.gov).

#### Zion National Park Compendium

Regulations specific to Zion can be found at [www.nps.gov/zion/parkmgmt](http://www.nps.gov/zion/parkmgmt).

# This Is Canyon Country

## Steep Cliffs

Loose sand or pebbles on stone are very slippery. Be careful of cliff edges when using cameras or binoculars. Never throw or roll rocks; there may be hikers below.

- Stay on the trail.
- Stay back from cliff edges.
- Observe posted warnings.
- Parents-watch your children!



This symbol is a warning. Falls from cliffs on these trails have resulted in death.

## Flash Floods

All narrow canyons are potentially hazardous. Flash floods, often from storms miles away, present a real danger and can be life-threatening. By entering a narrow canyon, you are assuming a risk.

## Judgment

Whether hiking, climbing, or driving, your safety depends on your good judgment,



Flash floods occur without warning.

adequate preparation, and constant attention. Don't ruin your vacation by having an accident. *Your safety is your responsibility.*

## Water

The desert is dry. Carry enough water for everyone in your group. Water is available at visitor centers, campgrounds, and Zion Lodge. Do not drink untreated water.



This one took place in seconds. A hiker would not survive.

# Information and Services

## Emergencies

For 24-hour emergency response, call 772-3322 or 911. Zion Canyon Medical Clinic is in Springdale, 435 772-3226. The nearest hospitals are in St. George, Cedar City, and Kanab.

## Accessibility



Restrooms, visitor centers, museum, and Zion Lodge are fully accessible. Several campsites are reserved for people with disabilities, and two trails are accessible.

## Pets

Pets are not allowed on shuttles, in the backcountry, on trails, or in public buildings. They must be under physical control on a leash no longer than six feet at all times. Pets may be walked on the Pa'rus Trail. Boarding kennels are available in Rockville, Hurricane, Kanab, St. George, and Cedar City.

## Entrance Fees

**Private Vehicle** \$25 per vehicle, good for 7 days in Zion National Park.

**Individual** \$12 per person (pedestrian, bicycle, motorcycle, and organized group), good for 7 days in Zion National Park.

**Zion Annual Pass** \$50, good for one year from date of purchase at Zion only.

**Commercial Tours** Ask for rates.

**Interagency Senior Pass** \$10 lifetime pass for U.S. residents 62 or older.

**Interagency Annual Pass** \$80, good for one year from date of purchase at all federal fee areas.

2 Zion Map & Guide

## Interagency Access Pass

Free lifetime pass for U.S. residents who are permanently disabled.

## Camping

**Watchman Campground** Open all year. Fees: \$16 a night, \$18 per night with electric hookups, \$20 per night for river sites (half price for holders of Golden Age/Access Passports and Interagency Senior/Access Passes). Reservations may be made for Watchman Campground six months in advance for April 1–October 24; on-line at [www.recreation.gov](http://www.recreation.gov), or call 877 444-6777. Sites are first-come, first-served October 25–early April.

**South Campground** Open March 6 through late October, sites are first-come, first-served. Fee: \$16 per night.

**Group Campsites** Available April 1 through October 24 by reservation to organized groups of 9-50 people for \$3.00 per person per night; on-line at [www.recreation.gov](http://www.recreation.gov), or call 877 444-6777.

**Facilities** Restrooms, drinking water, picnic tables, fire grates, dump stations.

**Other Campgrounds** Private campgrounds with showers and hookups are available outside the park.

## Fires

When fire danger is high, all campfires may be banned. When permitted, fires are allowed in fire grates at campgrounds and picnic areas. Bring or buy firewood; collecting is not permitted. No fires are allowed in the backcountry at any time.

## Bicycling

- Avoid cars by riding the Pa'rus Trail. Watch for pedestrians and leashed pets.
- Park shuttles will not pass bicyclists—stop in turnouts to allow them to pass.
- Don't pass a moving bus—the driver cannot see you.
- Use caution passing a stopped bus.
- Ride single file.
- Children must stay with parents.
- Please wear your helmet.
- Automobile rules of the road apply to bicycles.
- Bicycles are not allowed off roadways.
- Shuttles have racks for two bicycles.

## Backpacking

Permits are required for all backcountry camping—there is a fee. Maximum group size is 12 people. Permits and hiking information are available at visitor centers. See the *Zion Backcountry Planner* for more information.

## Climbing

Climbing on Zion's sandstone requires appropriate hardware and technical skills. Climbing information is available at visitor centers. Some routes may be closed to climbing when peregrine falcons are nesting. A permit (fee) is required for overnight climbs.

## Horseback Riding

Guided trips are available March 8 through October, 435 772-3810. For private stock use, see the *Zion Backcountry Planner*.

## Watercraft

All watercraft use in the park requires a backcountry permit. Permits are issued when the river is flowing in excess of 140 cubic feet per second. Inner tubes are not permitted at any time on any watercourse in the park.

## Food Service

**Zion Lodge** Dining room serves breakfast, lunch, and dinner. Cafe offers grab-and-go lunches. Dinner reservations are advised: 435 772-7760.

**Other Food Service** Restaurants available in Springdale, near east entrance, Mt. Carmel Junction, and Kanab.

**Groceries** Grocery stores available in Springdale and Kanab. Convenience stores available in Mt. Carmel Junction.

## Lodging

**Zion Lodge** Three miles north on Zion Canyon Scenic Drive. Open year-round. Rooms, cabins, suites, and gift shop. Reservations recommended: 888 297-2757, 435 772-7700, or [www.zionlodge.com](http://www.zionlodge.com).

**Other Lodging** Available in Springdale, Rockville, near east entrance, Mt. Carmel Junction, Kanab, and Cedar City.

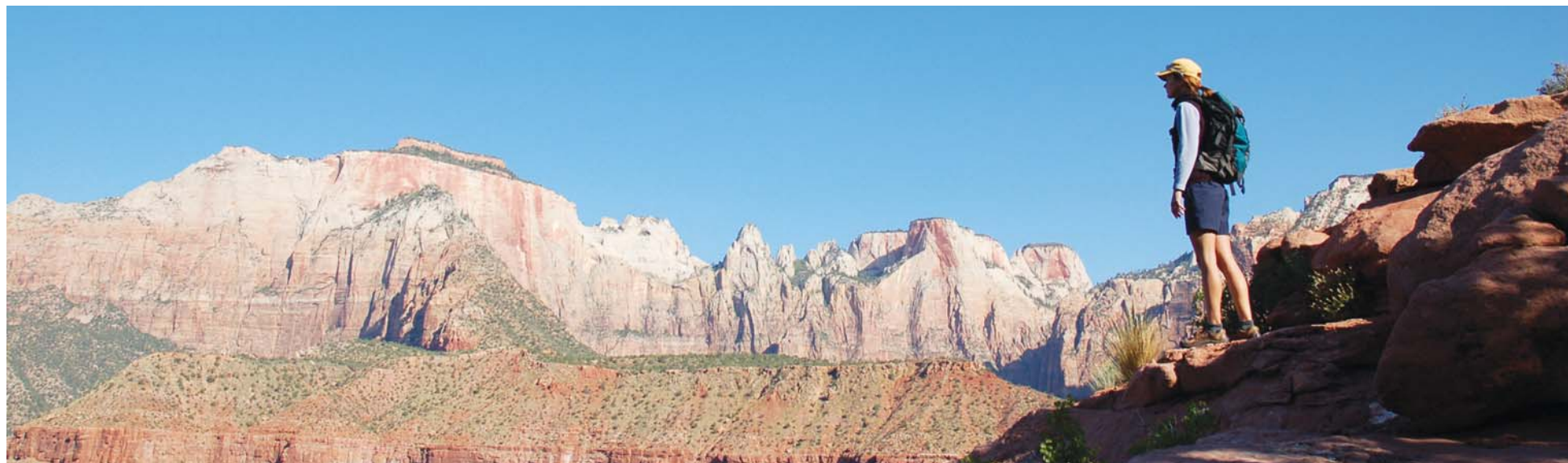
## Worship Services

Offered during summer; check bulletin boards for times.

**Interdenominational Christian** Zion Lodge and South Campground  
**LDS** Springdale

**Roman Catholic** Zion Lodge

# Making the Most of Your Time



The Watchman Trail.

## Less Than 3 Hours

### Zion Canyon Scenic Drive

The easiest way to see some of the park's most beautiful sights in a limited time is to ride the Zion Canyon Shuttle. Round trip will take a minimum of 90 minutes.

### Weeping Rock Trail

Short but steep walk on a paved path where springs continually drip from overhead. .5 miles/.5 hours round trip, climbs 98 feet. Shuttle stop: Weeping Rock

### Court of the Patriarchs

Short but steep trail leads to views of the Sentinel and the Three Patriarchs. 100 yards/.25 hours round trip, climbs 40 feet. Shuttle stop: Court of the Patriarchs

### Zion-Mt. Carmel Highway

The 10-mile road that connects the east and south entrances is a steep drive up switch-backs and through the mile-long tunnel. This is the main access to Bryce Canyon and the North Rim of Grand Canyon. Large vehicle restrictions see page 12.

## More Than 3 Hours

### Lower Emerald Pool Trail

One place where you'll often find at least a small waterfall. Easy, 1.2 miles/1 hour out and back, climbs 200 feet. Minor drop-offs. Shuttle stop: Zion Lodge

### Riverside Walk

Beautiful, shaded walk meanders through forested glens, following the path of the Virgin River into a high-walled canyon. Easy, 2 miles/1.5 hours round trip, climbs 57 feet. Shuttle stop: Temple of Sinawava

### Watchman Trail

Views of the West Temple and lower Zion Canyon. Best hiked early or late in the day, often hot in summer. Moderate, 2.7 miles/2 hours round trip, climbs 368 feet. Shuttle stop: Zion Canyon Visitor Center

### Hidden Canyon Trail

Steep climb to the mouth of Hidden Canyon. Hikers may continue but there is no

maintained trail. Strenuous, 2 miles/3 hours round trip, climbs 850 feet. Warning! Steep cliffs. Not for anyone fearful of heights. Shuttle stop: Weeping Rock

### Angels Landing Trail

Steep trail climbs Walter's Wiggles past Scout Lookout, with spectacular views of Zion Canyon. Strenuous, 5 miles/4 hours round trip, climbs 1,488 feet. Warning! Steep cliffs. Not for anyone fearful of heights or young children. Shuttle stop: The Grotto

### Observation Point

High on the east rim, the trail ends on a slender peninsula overhanging the valley floor offering spectacular views on three sides. Strenuous, 8 miles/5 hours round trip, climbs 2,148 feet. Warning! Steep cliffs. Not for anyone fearful of heights. Shuttle stop: Weeping Rock

## Visitor Centers

### Zion Canyon Visitor Center

At the south entrance, near Springdale. It is the main access for the Zion Canyon Shuttle. Exhibits help you plan your visit and make the most of your time. Rangers are available to answer questions and issue backcountry permits. Books and maps.

### Zion Human History Museum

First shuttle stop. Exhibits explain how humans have interacted with Zion. Orientation movie, information, and books.

### Orientation Movie

Twenty-two minute film highlights the park. Shown daily 9 am to closing on the hour and half hour in the Zion Human History Museum.

### Kolob Canyons Visitor Center

Interstate 15 at Exit 40, 45 miles north of Springdale and 17 miles south of Cedar City. Rangers are available to answer questions and issue backcountry permits. Exhibits, books, and maps.



Weeping Rock



Biking the Pa'rus Trail



Angels Landing Trail with the Virgin River 1,200 feet below.



Use the exhibits at the visitor centers and the orientation movie to plan how to best use your time.

# Ranger-led Programs

Ranger-led activities are a great way to learn about Zion. All programs are free. Allow time for shuttle transportation. •Visitor Center to Zion Lodge: 20 minutes. •Visitor Center to The Grotto: 30 minutes. •Visitor Center to Temple of Sinawava: 40 minutes

## Talks (20–30 minutes)

### Animal Icons

Rattlesnake? Condor? Discover the lifestyle and habits of one of Zion’s famous residents. Museum Patio. Accessible.

**Canvas of Cliffs** (1.5 hrs, drop-in anytime) Weather permitting, look at life on the cliffs and the story of the surrounding peaks. Stop by anytime during the times listed. Big Bend Shuttle Stop. Accessible.

**Desert Struggles** Discover the secrets of survival in the desert environment. Museum Patio. Accessible.

### Footsteps in Time

Explore the history and culture of Utah’s native people. Museum Patio. Accessible.

### Pioneer Glimpses

Unravel the history and lifestyle of Zion’s early residents. Museum Patio. Accessible.

### Ranger’s Choice

Join a ranger and explore a topic of their choice. Zion Lodge Lawn. Accessible.

### Stories in Stone

Unearth the past by exploring the fossil record left behind. Museum Patio. Accessible.

### Water, Rocks, and Time

Uncover the geologic story behind the striking scenery. Museum Patio. Accessible.

### Windows into the Past

Discover the events or projects that helped shape Zion National Park. Museum Patio. Accessible.

### Zion Zoology

Explore the natural history of some of Zion’s most interesting inhabitants. Museum Patio. Accessible.

**Walks and Hikes**

**Canyon Country** (3 hrs, strenuous 2.5-mi) Uncover the beauty and hidden surprises in Zion’s narrow canyons. Not suitable for young children. Weeping Rock Shuttle Stop.

**Discover Kolob** (2 hrs, moderate, 2-mi) Uncover stories of history and nature as you take an intimate look at the beauty of Kolob Canyons. Make reservations no more than three days in advance at the Kolob Canyons Visitor Center or call 435 586-9548.

**Emerald Escape** (2 hrs, moderate 2-mi) Experience the splendors found along an ever-changing trail. Emerald Pools Trailhead.

**Faces and Places in Time** (1.5 hrs, easy 1-mi) Follow a tree-lined route along the river as you explore the rich history of Zion Canyon. Zion Lodge Lawn.

**From Cacti to Cottonwoods** (2.5 hrs, moderate 2.5-mi) Explore the fascinating world of wildflowers, trees, and other plant life. Watchman Trailhead.

**Hiking the Kayenta** (2 hrs, moderate 1.5-mi) Hike along a trail with spectacular views and discover Zion’s unique natural and cultural history. The Grotto.

**Riverside Ramble** (1.75 hrs, easy 2-mi) Discover the power of water in canyon country. Riverside Walk Trailhead.

**Rock and Stroll** (1.5 hrs, easy 1-mi) Follow the Virgin River and unearth the geologic processes that sculpt the scenery. Big Bend Shuttle Stop.

**The Narrows** (4.5 hrs, strenuous 6-mi) Surround yourself with towering cliffs, slot canyons, and hanging gardens on this epic journey through the Virgin River. Make reservations no more than three days in advance at the Zion Canyon Visitor Center.

**Walking the Watchman** (2.5 hrs, moderate 2.5-mi) Explore a diverse and beautiful landscape teeming with life. Watchman Trailhead.

**Where Are They Now?** (2 hrs, moderate 2-mi) Discover the influences of people on Zion—past, present, and future. Court of the Patriarchs.

## Shuttle Tours

**Ride with a Ranger** (2 hrs) Enjoy a unique experience as you travel along Zion Canyon Scenic Drive on a ranger-led shuttle bus tour. Stops will provide an intimate look at Zion Canyon. Seating is limited—make reservations up to one day in advance at the Zion Canyon Visitor Center. Reservations are not required for the regular shuttle system. Arrive 15 minutes prior to departure. Accessible.

## Evening Programs

Discover what makes Zion such a special place. 45–minute programs address a wide variety of topics at Watchman Campground Amphitheater and Zion Lodge Auditorium. Parking at Watchman Campground for non-campers. Check bulletin boards at the visitor center, museum, and campgrounds for topics. Accessible.

	Sunday	Monday	Tuesday	Wednesday	Thursday	Friday	Saturday
<b>Morning</b>							
8:30	Walking the Watchman	Emerald Escape			From Cacti to Cottonwoods	The Narrows	
9:00	Ride with a Ranger	Ride with a Ranger	Ride with a Ranger	Ride with a Ranger	Ride with a Ranger	Ride with a Ranger	Ride with a Ranger
9:00	Junior Ranger Explorer	Junior Ranger Explorer	Junior Ranger Explorer	Junior Ranger Explorer	Junior Ranger Explorer	Junior Ranger Explorer	Junior Ranger Explorer
9:00		Canvas of Cliffs	Canyon Country	Faces and Places in Time	Canvas of Cliffs	Where Are They Now?	Canvas of Cliffs
9:00							Discover Kolob
9:30							Riverside Ramble
10:25	Windows into the Past		Zion Zoology	Desert Struggles	Zion Zoology		Water, Rocks, and Time
11:25		Water, Rocks, and Time				Animal Icons	
11:55	Water, Rocks, and Time		Water, Rocks, and Time	Windows into the Past	Stories in Stone		Desert Struggles
<b>Afternoon</b>							
1:30	Junior Ranger Discovery	Junior Ranger Discovery	Junior Ranger Discovery	Junior Ranger Discovery	Junior Ranger Discovery	Junior Ranger Discovery	Junior Ranger Discovery
2:25	Zion Zoology	Animal Icons	Footsteps in Time	Water, Rocks, and Time	Pioneer Glimpses	Water, Rocks, and Time	Zion Zoology
3:00	Ranger’s Choice	Ranger’s Choice	Ranger’s Choice	Ranger’s Choice	Ranger’s Choice	Ranger’s Choice	Ranger’s Choice
<b>Evening</b>							
6:00	Hiking the Kayenta	Riverside Ramble	Hiking the Kayenta		Hiking the Kayenta	Emerald Escape	
6:30				Rock and Stroll			Rock and Stroll
6:30	Ride with a Ranger	Ride with a Ranger	Ride with a Ranger	Ride with a Ranger	Ride with a Ranger	Ride with a Ranger	Ride with a Ranger
9:00	Zion Lodge Evening Program	Zion Lodge Evening Program	Zion Lodge Evening Program	Zion Lodge Evening Program	Zion Lodge Evening Program	Zion Lodge Evening Program	Zion Lodge Evening Program
9:30 June & July	Watchman	Watchman	Watchman	Watchman	Watchman	Watchman	Watchman
9:00 August	Evening Program	Evening Program	Evening Program	Evening Program	Evening Program	Evening Program	Evening Program

# Junior Ranger Programs

## Ranger-guided Programs

### Who

These programs are developed especially for children 6 to 12 years old. For children under 6, see “Self-Guided Programs.”

### What

Kids learn about Zion National Park and their world through hands-on activities, games, hikes, and lessons. Topics vary and range from plants and animals to geology and archeology.

### When

Twice daily at 9:00 am and 1:30 pm, May 23 to September 6, 2009.

### Junior Ranger Explorer

Daily at 9 am, 2 ½ hours long. Registration begins at 8:45 am. Kids earn a patch. Drop-off program.

### Junior Ranger Discovery

Daily at 1:30 pm, 1 ½ hours long. Registration begins at 1:15 pm. Kids earn a badge. Designed for parental/guardian attendance.

### Where

The programs are held at the Zion Nature Center, ½ mile north of the south park entrance, near the entrance to South Campground. The shuttle does not stop at the Nature Center. You may drive to the Nature

Center or walk from the campgrounds, visitor center, or museum.

### What to Wear

Many activities are outdoors, so dress comfortably and wear closed-toe shoes; *no sandals*. Bring water. Hats and sunscreen are good on hot, sunny days. Bring rain gear if the weather looks stormy.

### Parents

Food is not available, so ensure children have eaten before coming. Bring water. Children must be with their parents or guardian between sessions if attending both morning and afternoon programs. Please be prompt dropping off and picking up.

## Self-guided Programs

### Ages 6 to 12

Children 6 to 12 years old can earn a badge by completing an activity booklet during their visit. Colorful Jr Ranger Handbooks are available for \$1 at the visitor centers and museum year-round.

### Ages Under 6

Children under 6 years old can earn a decal by completing an activity sheet available at the Zion Canyon Visitor Center and Zion Human History Museum.



The Pa'rus Trail connects the Visitor Center and Human History Museum to the Nature Center.

# Park Profile



Common Raven

### Established

1909 as Mukuntuweap National Monument; expanded in 1919 as Zion National Park. Kolob Canyons added in 1956.

### Significance

Established to preserve and protect aesthetic and scientific values:

- Stunning scenery found nowhere else on earth.
- A geologic showpiece with sandstone cliffs among the highest in the world.
- One of the last mostly free-flowing river systems on the Colorado Plateau.
- A large, diverse plant and animal community.
- Evidence of human occupation both historic and prehistoric, including excellent examples of Civilian Conservation Corps work.



Collared lizard

### Size

232 square miles (148,199 acres).

### Elevation

Lowest: 3,666 ft (1,117 m), Coalpits Wash in the southwest corner. Highest 8,726 ft (2,660 m), Horse Ranch Mountain.

### Precipitation

Average: 15 inches in Zion Canyon.

### Name

Zion, interpreted by Mormons as a place of safety or refuge, given to this canyon by Mormon pioneers in the 1860s. Kolob, in Mormon theology, is a heavenly place close to God.

### Humans

Evidence of Ancestral Puebloans, known



Desert bighorn sheep

as the Anasazi, date from 2,000 years ago; Southern Paiutes from about 800 years ago to present. Mormon settlers arrived in the 1860s. Park visitation in 1920 was 3,692; in 2008 it reached 2.7 million.

### Plant Life

Richest diversity of plants in Utah—almost 800 native species. Differences in elevation, sunlight, water, and temperature create “microenvironments,” like hanging gardens, side canyons, and isolated mesas that lend to this diversity.

### Animal Life

67 species of mammals, 207 birds, 35 reptiles and amphibians, six native fish. Commonly seen animals include mule deer, lizards, and many species of birds. Rare or endangered species include the peregrine



Canyon treefrog

falcon, Mexican spotted owl, California condor, desert tortoise, and the Zion snail, found nowhere else on earth.

### Zion Canyon Shuttle

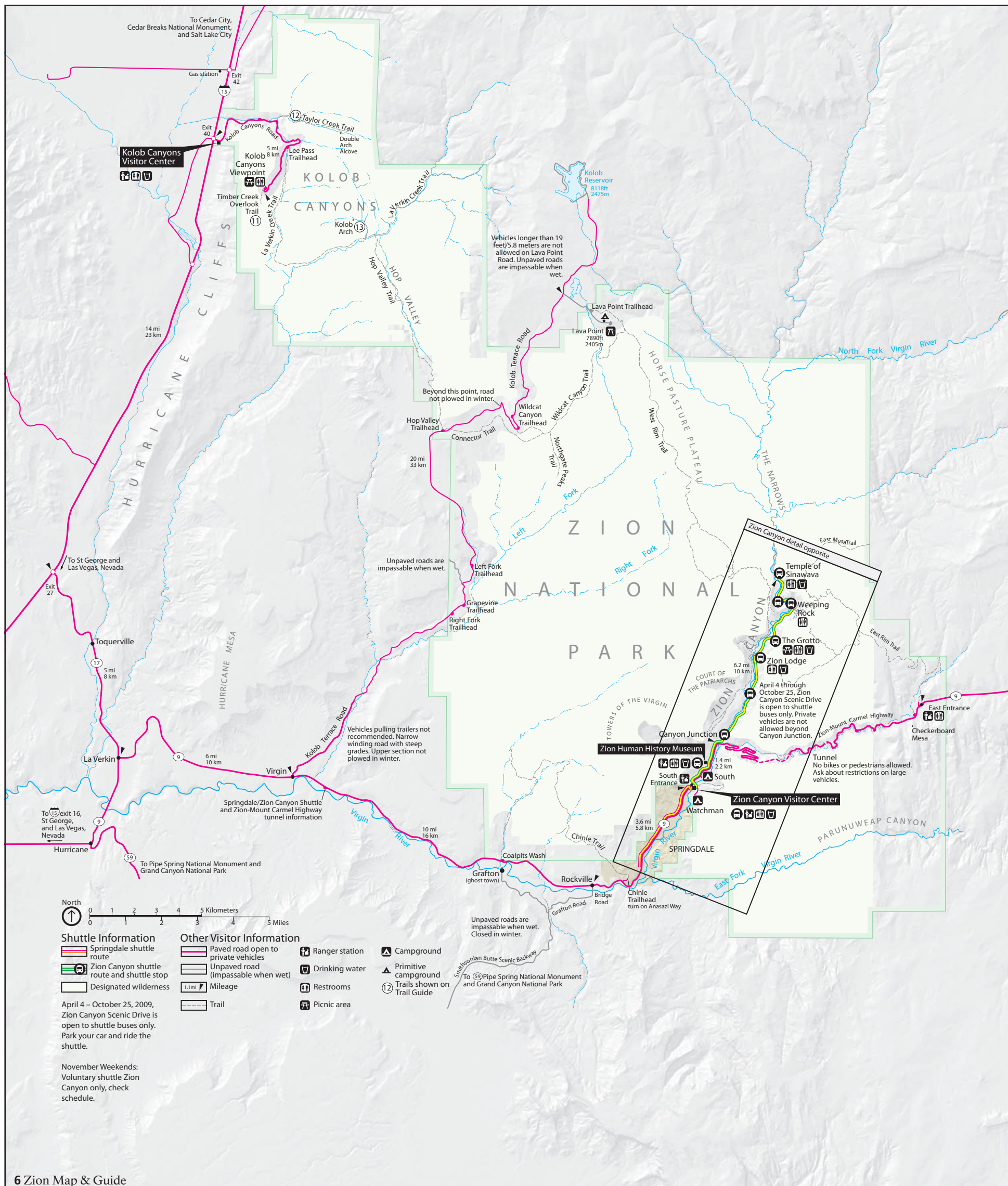
Includes 30 propane buses. In 2008, ridership was 3.5 million. Each bus/trailer combination replaces 28 cars.

### Wilderness

On March 30, 2009, President Barack Obama signed a bill into law designating 124,406 acres of Zion National Park as wilderness. The bill also added 648 acres of Bureau of Land Management land into the park on the east edge of Springdale. Ninety percent of Zion is managed under the 1964 Wilderness Act. The wilderness is shown on the map on page 6.

Zion Map & Guide 5

# Zion National Park



To Cedar City, Cedar Breaks National Monument, and Salt Lake City

Kolob Canyons Visitor Center

To St George and Las Vegas, Nevada

To (15) exit 16, St George, and Las Vegas, Nevada

To Pipe Spring National Monument and Grand Canyon National Park

Vehicles longer than 19 feet/5.8 meters are not allowed on Lava Point Road. Unpaved roads are impassable when wet.

Unpaved roads are impassable when wet.

Vehicles pulling trailers not recommended. Narrow winding road with steep grades. Upper section not plowed in winter.

Unpaved roads are impassable when wet. Closed in winter.

To (59) Pipe Spring National Monument and Grand Canyon National Park

**Zion Canyon detail opposite**

- Temple of Sinawava
- Weeping Rock
- The Grotto
- Zion Lodge
- April 4 through October 25, Zion Canyon Scenic Drive is open to shuttle buses only. Private vehicles are not allowed beyond Canyon Junction.
- Canyon Junction
- Zion Human History Museum
- South Entrance
- Watchman
- Zion Canyon Visitor Center
- East Entrance
- Checkerboard Mesa
- Tunnel: No bikes or pedestrians allowed. Ask about restrictions on large vehicles.



0 1 2 3 4 5 Kilometers  
0 1 2 3 4 5 Miles

**Shuttle Information**

- Springdale shuttle route
- Zion Canyon shuttle route and shuttle stop
- Designated wilderness

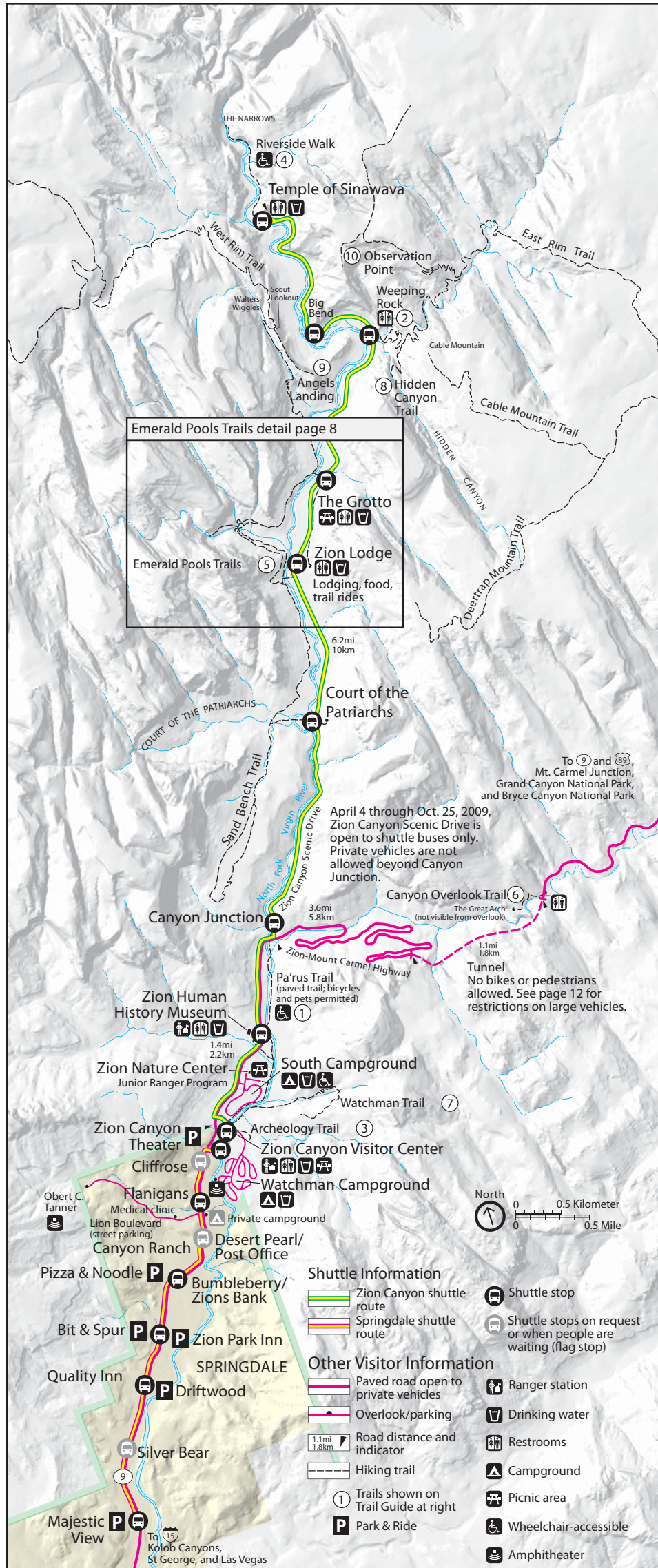
April 4 – October 25, 2009, Zion Canyon Scenic Drive is open to shuttle buses only. Park your car and ride the shuttle.

November Weekends: Voluntary shuttle Zion Canyon only, check schedule.

**Other Visitor Information**

- Paved road open to private vehicles
- Unpaved road (impassable when wet)
- 1.1mi Mileage
- Trail
- Ranger station
- Drinking water
- Restrooms
- Picnic area
- Campground
- Primitive campground
- Trails shown on Trail Guide

# Zion Canyon



# Trail Guide

## Use the Shuttle to Access Trailheads

Access to trailheads along the Zion Canyon Scenic Drive is by shuttle only. *Private vehicles are not allowed.* Shuttles depart early morning from Springdale and the Zion Canyon Visitor Center and run late into the evening. Check page 12 for schedule. Plan your hike so you do not miss the shuttle.

## For Your Safety

Stay on established trails and watch your footing, especially at overlooks and near drop-offs. Always stay back from edges. Watch children closely. People uncertain about heights should turn around if they become uncomfortable. Never throw or roll rocks; there may be hikers below.

Trail & Shuttle Stop	Round Trip (mi/km)	(avg. time)	Ascent (ft/m)	Description	Map Location
<b>Zion Canyon Pa'rus Trail</b> Zion Canyon Visitor Center	3.5/5.6	1-1/2 hrs.	50/15	<b>Easy</b> Paved trail follows Virgin River from South Campground to Canyon Junction.	1
<b>Weeping Rock</b> Weeping Rock	0.5/0.8	1/2 hour	98/30	<b>Short but steep</b> Minor drop-offs. Paved trail ends at a rock alcove with dripping springs. Trailside exhibits.	2
<b>Archeology Trail</b> Zion Canyon Visitor Center	0.4/0.6	1/2 hour	80/24	<b>Short but steep</b> Trail climbs a small hill to the outlines of small prehistoric storage buildings. Trailside exhibits.	3
<b>Riverside Walk</b> Temple of Sinawava	2.0/3.2	1-1/2 hrs.	57/17	<b>Easy</b> Minor drop-offs. Paved trail follows Virgin River along bottom of narrow canyon. Trailside exhibits.	4
<b>Lower Emerald Pool</b> Zion Lodge	1.2/1.9	1 hour	69/21	<b>Easy</b> Minor drop-offs. Paved trail to lower pool and waterfalls.	5
<b>Middle Emerald Pools</b> Zion Lodge	2.0/3.2	2 hours	150/46	<b>Moderate</b> Long drop-offs. This is the access to the Upper Pools.	5
<b>Canyon Overlook</b> Zion-Mt. Carmel Highway-east of long tunnel	1.0/1.6	1 hour	163/50	<b>Moderate</b> Long drop-offs, mostly fenced. Rocky, uneven trail ends at spectacular viewpoint of lower Zion Canyon and Pine Creek Canyon.	6
<b>Watchman</b> Zion Canyon Visitor Center	2.7/4.3	2 hours	368/112	<b>Moderate</b> Minor drop-offs. Ends at viewpoint of lower Zion Canyon, Oak Creek Canyon, and Springdale.	7
<b>Hidden Canyon</b> Weeping Rock	2.0/3.2	3 hours	850/259	<b>Strenuous</b> Long drop-offs. Not for anyone fearful of heights. Ends at mouth of narrow canyon.	8
<b>Angels Landing</b> The Grotto	5.0/8.0	4 hours	1488/453	<b>Strenuous</b> Long drop-offs and narrow trail. Not for anyone fearful of heights. Ends at summit high above Zion Canyon. Last 0.5 mi (0.8 km) follows steep, narrow ridge; chains have been added.	9
<b>Observation Point</b> Weeping Rock	8.0/12.9	5 hours	2148/655	<b>Strenuous</b> Climbs through Echo Canyon to Observation Point. Excellent views of Zion Canyon. Trail gives access to other East Rim plateau trails: Cable Mountain and Deertrap Mountain.	10
<b>Kolob Canyons Timber Creek Overlook</b> Kolob Canyons picnic area	1.0/1.6	1/2 hour	100/30	<b>Moderate</b> Follows ridge top to small peak with views of Timber Creek, Kolob Terrace and Pine Valley Mountains.	11
<b>Taylor Creek</b> 2 mi. east of Kolob Canyons Visitor Center	5.0/8.0	4 hours	450/137	<b>Moderate</b> No drop-offs. Follows Middle Fork of Taylor Creek past two homestead cabins to Double Arch Alcove.	12
<b>Kolob Arch</b> Lee Pass	14/22.5	8 hours	699/213	<b>Strenuous</b> No drop-offs. Follows Timber and La Verkin Creeks and ends at Kolob Arch, possibly the world's largest free-standing arch.	13

# Hiking & Canyoneering

HIKING IN CANYONS, EVEN SHORT HIKES, REQUIRES ADVANCE PLANNING. MANY HIKES INVOLVE walking in water, and the rivers and washes are subject to flash flooding. River flow varies greatly depending on time of year and weather conditions. Check the National Weather Service weather forecast and flash flood potential before entering any canyon; posted daily in visitor centers. See the *Zion Backcountry Planner* for additional information.

## Permits

Permits are required for all overnights, through-hikes of The Narrows and tributaries, Left Fork of North Creek (the Subway), Kolob Creek, and all canyons requiring the use of technical equipment. Permits are issued at visitor centers the day before your hike. Cost:

- \$10 for 1-2 people
- \$15 for 3-7 people
- \$20 for 8-12 people.

Reservations are available on-line for many permits: [www.nps.gov/zion](http://www.nps.gov/zion).

## Group Size

The maximum group size is 12 people of the same affiliation on the same trail or in the same drainage on the same day.

## Be Prepared

All narrow canyons are potentially hazardous. Flash floods, cold water, and strong currents present real dangers that can be life-threatening. Your safety depends on your own good judgment, adequate preparation, and constant attention. *By entering a narrow canyon, you are assuming a risk. Your safety is your responsibility.*

## Zion Narrows

Weather and water conditions permitting, there are three ways to hike The Narrows:

**Short Day Hike** Continue upstream beyond the end of the Riverside Walk up to Big Spring. 1 to 5 hours, round trip. No permit required.

**Through Day Hike** Hike downstream from Chamberlain's Ranch. This strenuous 16-mile all-day hike requires a private shuttle to the trailhead and a permit.

**Overnight Hike** Hike downstream from Chamberlain's Ranch. This two-day hike requires a shuttle to the trailhead and a permit. Maximum stay is one night. Fires are not allowed.

## Zion Narrows Checklist

- Obtain *weather and flash flood potential forecasts* before starting your trip.
- Wear *sturdy boots* or shoes with ankle support.
- Take a *walking stick*. Do not cut tree branches for sticks.
- Small children *should not hike in the river* due to strong currents and deep pools.
- Carry out all trash: food wrappers, apple cores, fruit peels, tissue paper—everything you carried in.
- Carry one gallon of *drinking water* per person for a full-day hike, food, sunglasses, sunscreen, and first aid kit.
- Take a *sweater or windbreaker*. The Narrows is much cooler than Zion Canyon.
- Pack gear in *waterproof bags*.
- Use the *restroom* at the Riverside Walk Trailhead before hiking. There are no toilets in The Narrows.

# Emerald Pools Trails

THIS SERIES OF POOLS AND WATERFALLS MAY BE ACCESSED BY THREE DIFFERENT ROUTES. THESE trails, as well as a short trail to the upper pool, connect and can be combined as a loop. There is always a small waterfall at the lower pool. If it rains, there may be larger waterfalls at both the upper and lower pools.

## Lower Emerald Pool Trail

Easy, 1.2-mile out and back, 69-foot ascent. Paved trail to the pool, then continues behind the waterfalls that cascade from the middle pools into the lower pool.

## Middle Emerald Pools Trail

Moderate, 1-mile one-way, 150-foot ascent. Unpaved climb to a sandstone ledge that parallels the lower trail but at a higher level. Do not go near the edge. Deaths have occurred from falling from the middle pools. Loose sand and pebbles on stone are very slippery.

## Upper Emerald Pool Trail

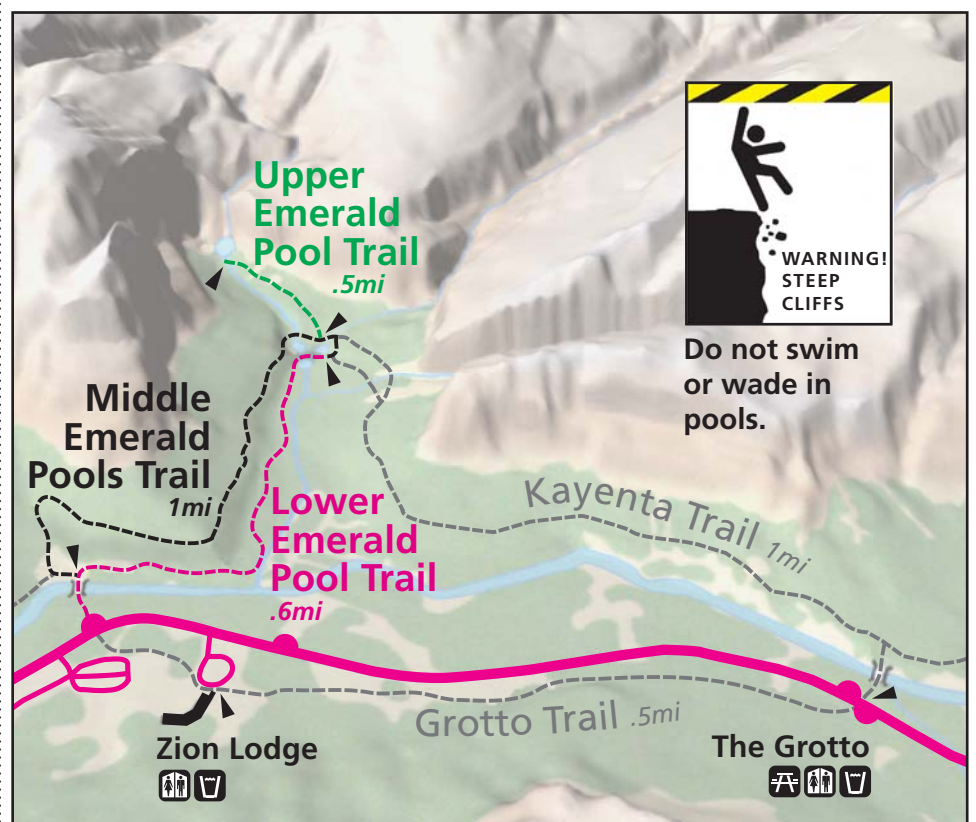
Moderate, .5-mile from Middle Pool Trail one-way, 200-foot ascent. A sandy, rocky trail climbs to the base of the cliff.

## Kayenta Trail

Moderate, 1-mile one-way, 150-foot ascent. Unpaved climb to a sandstone ledge, connects The Grotto to the Middle Emerald Pools.

## Grotto Trail

Easy, .5-mile one-way, level. Trail connects Zion Lodge to The Grotto Picnic Area. Can be linked with Middle Emerald Pools and Kayenta Trails allowing a 3-mile loop hike.



# Mountain Lions

MOUNTAIN LIONS ARE WILD ANIMALS AND CAN BE DANGEROUS. THEY HAVE BEEN OBSERVED frequently in the park. An attack by one is unlikely—there is a far greater risk of being struck by lightning. Zion National Park has never had a reported attack on people or pets. However, mountain lions have attacked in other areas.

Several mountain lions are currently radio-collared in the Zion area as part of a multi-year study to learn more about the habits of these elusive creatures.

## Recommendations for Your Safety

- Watch children closely, and never let them run ahead or lag behind.
- Solo hiking, jogging or biking is not recommended.
- Never approach a mountain lion. Most will try to avoid a confrontation. Always give them a way to escape.

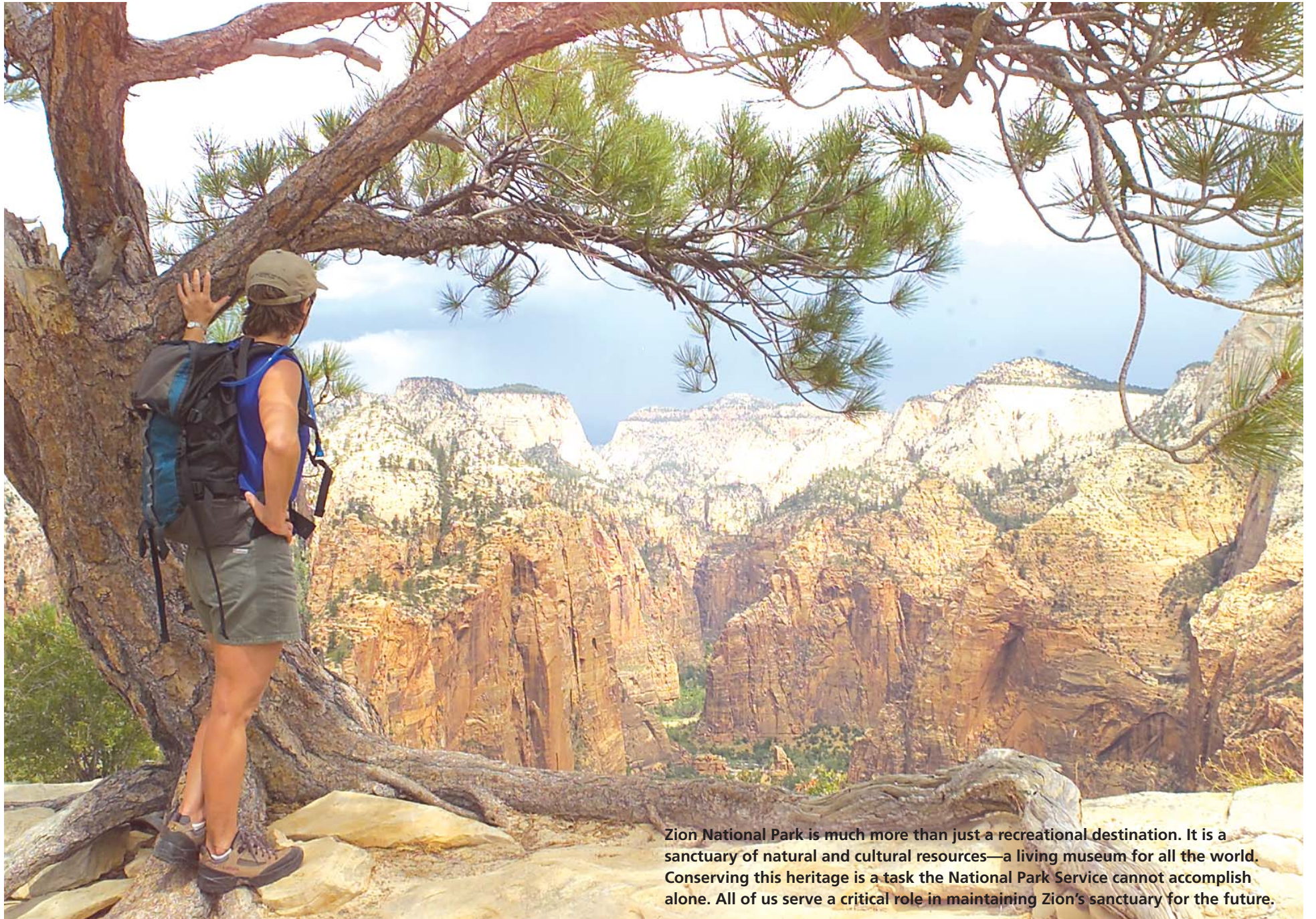
- Do not run! Try to look large. Put your arms up.
- If a mountain lion approaches, wave your arms, shout, and throw rocks or sticks at it.
- If attacked, fight back.
- Report any mountain lion sightings or encounters to a park ranger as soon as possible.



This young male mountain lion was photographed with an infrared-triggered remote camera.



# Maintaining Sanctuary



Zion National Park is much more than just a recreational destination. It is a sanctuary of natural and cultural resources—a living museum for all the world. Conserving this heritage is a task the National Park Service cannot accomplish alone. All of us serve a critical role in maintaining Zion's sanctuary for the future.



Please stay on marked trails. Hiking off trails can lead to loss of vegetation, soil compaction, erosion, and unsightly scars on the landscape.



"The squirrel bit me in less than a second. It took 13 stitches."—B.W. Wild animals can hurt you. Don't feed them. Human foods are not healthy for wildlife. Feeding, harming, or capturing wild animals is illegal and can cause injury or death to the animal.



Please respect the peace and quiet of the park and protect the subtle sounds of nature by traveling quietly.



Vegetation lives longer when cars remain on the pavement. Please park in designated spaces only. Fines can be as high as \$250.

# Traveling in the Area

## Travel Information

You can get more information on traveling in the area at the information desks in the park visitor centers. The nearby towns of Kanab, St. George, and Cedar City have offices for some or all of these other land management agencies. They also have travel councils and chambers of commerce.

Utah Travel Council 800 200-1160,  
www.utah.com

Utah State Parks and Recreation 801 538-7220, Reservations 800 322-3770  
www.stateparks.utah.gov

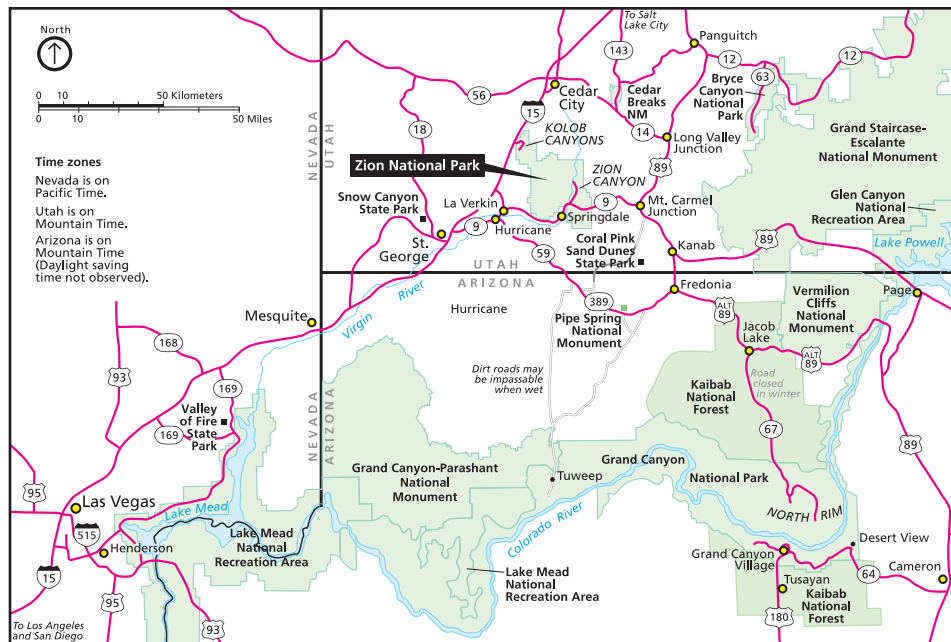
National Park Service  
www.nps.gov

Bureau of Land Management  
801 539-4001 www.blm.gov

U.S. Forest Service  
www.fs.usda.gov

National Weather Service  
www.weather.gov

Utah Department of Transportation  
Recorded road conditions and construction, dial 511



## Area Mileages

One-way from Zion Canyon Visitor Center.

### West Bound

St. George, UT 50  
Las Vegas, NV 167  
Death Valley, CA 286

### South Bound

Grand Canyon North Rim 128  
Grand Canyon South Rim 248  
Flagstaff, AZ 243

### East Bound

Kanab, UT 44  
Page, AZ 117  
Albuquerque, NM 559

### North Bound

Bryce Canyon 86  
Salt Lake City, UT 308  
Moab, UT 345

## Climate Friendly Zion: By the Numbers

74

percent less energy used by Zion Canyon Visitor Center compared to a conventional building

181

reduction in tons of CO2 emissions per year at Zion Canyon Visitor Center

12.1 million

shuttle passenger miles per year

64

tons of material recycled by employees in 2007

60

percent electricity purchased from renewable sources

12,000

pounds of food scraps composted by Zion Lodge in 2007

# Weather and Climate

Be prepared for a wide range of weather conditions. Temperatures vary with changes in elevation and day/night temperatures may differ by over 30°F/1°C.

## Spring

Stormy, wet days are common, but warm, sunny weather may occur too. Precipitation peaks in March. Spring wildflowers bloom from April through June, peaking in May.

## Summer

Days are hot (95–110°F/35–43°C), but overnight lows are comfortable (65–70°F/18–21°C). Afternoon thunderstorms are common mid-July through mid-September. Storms may produce waterfalls and flash floods.

## Fall

Days are usually clear and mild; nights are often cool. Autumn color displays begin in September in the high country. Colors in Zion Canyon usually peak in late October.

## Winter

Winters in Zion Canyon are fairly mild. Winter storms bring rain or light snow to Zion Canyon, but heavier snow to the higher elevations. Clear days can reach 60°F; nights are often in the 20s and 30s. Winter storms can last several days and cause roads to be icy. Zion roads are plowed, except the Kolob Terrace Road, which is closed in winter. Be prepared for winter driving conditions from November through March.

Month	J	F	M	A	M	J	J	A	S	O	N	D
<b>Temperature (°F)</b>												
normal daily max	52	57	63	73	83	93	100	97	91	78	63	53
normal daily min	29	31	36	43	52	60	68	66	60	49	37	30
extreme high	71	78	86	94	102	114	115	111	110	97	83	71
extreme low	-2	4	12	23	22	40	51	50	33	23	13	6
days above 90°F	0	0	0	1	8	21	30	28	18	3	0	0
days below 32°F	19	14	10	3	0	0	0	0	0	1	9	18
<b>Precipitation (inches)</b>												
normal	1.6	1.6	1.7	1.3	0.7	0.6	0.8	1.6	0.8	1.0	1.2	1.5
maximum	7.5	6.7	7.1	4.4	3.0	4.0	3.6	4.8	6.7	3.3	3.2	4.3
max 24 hour	1.6	1.3	0.9	1.2	1.8	2.2	1.1	1.6	1.4	1.3	1.3	2.0
max snowfall	26	18	14	3	T	0	0	0	T	1	5	21
days w/precip	7	7	8	6	5	3	5	6	4	4	5	6
thunderstorms	0	0	0	1	4	5	14	15	5	2	0	0

# Sky Watch



Date	Sunrise	Sunset
April 1	7:17 am	7:55 pm
April 15	6:57 am	8:07 pm
May 1	6:37 am	8:22 pm
May 15	6:23 am	8:34 pm
June 1	6:13 am	8:47 pm
June 15	6:11 am	8:54 pm
July 1	6:16 am	8:56 pm
July 15	6:24 am	8:52 pm
August 1	6:37 am	8:39 pm
August 15	6:49 am	8:23 pm
September 1	7:03 am	8:00 pm
September 15	7:14 am	7:39 pm
October 1	7:28 am	7:15 pm
October 15	7:40 am	6:55 pm

## Full Moon

•April 9 •May 9 •June 7  
•July 7 •August 6  
•September 4 •October 4

# ZION CANYON FIELD INSTITUTE

## OUTDOOR LEARNING ADVENTURES



### EDUCATIONAL ADVENTURES IN ZION

Imagine hiking with a wildlife biologist to watch bighorn sheep. Capture the photograph of a lifetime when a rainbow appears against the West Temple. Find the tracks of ringtails in the sands of a dry wash. View a bat up close during a mist-net study. Discover and map an unrecorded archaeological site.

These are experiences that Zion Canyon Field Institute (ZCFI) participants enjoy during their workshops. The Field Institute educates and inspires visitors about the greater Zion National Park ecosystem and environment. ZCFI is the educational division of the non-profit Zion Natural History Association, publisher and seller of books on Zion National Park and related subjects for over 70 years. The Field Institute sponsors outdoor workshops with expert and engaging instructors and challenging itineraries that immerse participants in the park and stimulate investigation of its many natural and cultural resources. These workshops take place at and around Zion National Park, Cedar Breaks National Monument and Pipe Spring National Monument.

All classes include hiking from moderate to strenuous. Most classes also include an indoor component such as a lecture, slide presentation, demonstration, or time to examine animal or plant specimens.

### JUNE

- 4 Thursday Trek
- 6 Saturday Bird Watching
- 6 North Gate Peaks Exploratory
- 13 Hanging Gardens of Zion
- 13 Zion Narrows
- 27 Zion Narrows

### JULY

- 4 Saturday Bird Watching
- 5 Zion by Moonlight
- 8 Cedar Breaks Wildflower Festival Tour
- 9 Wildflower Photography at Cedar Breaks
- 11 Cedar Mountain Wildflowers
- 13 Wildflower Journaling at Cedar Breaks
- 15 Cedar Breaks Wildflower Festival Tour
- 22 Cedar Breaks Wildflower Festival Tour

### AUGUST

- 1 Saturday Bird Watching
- 8 Geology of Cedar Breaks
- 14 Insects of Zion
- 20 Bat Biology and Conservation
- 21 Reptiles and Amphibians
- 28 Slickrock Ecology

### SEPTEMBER

- 5 Zion Narrows
- 5 Saturday Bird Watching
- 16 Wednesday Wildlife Walk
- 17 Thursday Trek
- 19 Zion Narrows
- 19 ZNP Foundation Annual Fall Fundraiser
- 24-25 Autumn Photography

### SEPTEMBER

- 3 The Illustrated Journal
- 3 Saturday Bird Watching
- 8 Thursday Trek
- 16 Rim to Floor
- 17-18 Zion 101
- 19-20 Archaeology Service Project
- 21 Wednesday Wildlife Walk
- 22 Watercolor Journaling at Kolob Canyons
- 25-27 Fall Foliage Photography
- 28 Archaeology Road Trip: Zion to Pipe Spring

### SEPTEMBER

- 5 Thursday Trek
- 7-8 Geology of the Grand Staircase
- 11 Wednesday Wildlife Walk
- 13 Zion Geology
- 14 Virgin River Wilderness and Beaver Dam Mountains: A Geologic Journey



Studying a bat caught in a mist net. **Bat Biology and Conservation.**

### SERVICE PROJECTS

Participants have the opportunity to get a "backstage" view of Zion, to learn intensively about a single subject, and to be part of a project that benefits Zion National Park.

### TO ENROLL

Visit our web site at [www.zionpark.org](http://www.zionpark.org) or

stop by the Zion Canyon Visitor Center. Call us for a free catalog of workshops at 435 772-3264 or 800 635-3959. Fees range from \$25-\$80 per day.

### PRIVATE WORKSHOPS

Our "Explore Zion" program provides private workshops for your small group or family scheduled at your convenience.

## ZION NATURAL HISTORY ASSOCIATION

435 772-3264 FAX 435 772-3908 WWW.ZIONPARK.ORG

The Zion Natural History Association is a non-profit organization established in 1931 to support education, research, publications, and other programs for the benefit of Zion National Park, Cedar Breaks National Monument, and Pipe Spring National Monument. Financial support by ZNHA members combine with sales from our bookstores to provide parks with approximately \$400,000 in aid annually. Join us as a member of ZNHA today and receive a 20% discount on Field Institute workshops and on purchases at ZNHA bookstores. Order books by phone at 800 635-3959 or our website: [www.zionpark.org](http://www.zionpark.org). Find hundreds of books, posters, t-shirts, and other Zion items at our web site.

### ZION TRIP PLANNING PACKAGE

Plan your vacation to Zion National Park with our hand-selected publications. Includes the books: *Zion, Sanctuary in the Desert*; *Zion Shuttle Guide*; *Falcon Guide*; *Hiking Zion and Bryce Canyon*; *Introduction to the Geology of Zion National Park*; and a Zion topographic map (\$35.29 value). Only \$25.95 (All books are also available for individual purchase.)

### ZION NATIONAL PARK ORIENTATION VIDEO/DVD

Enjoy the official National Park Service orientation movie to Zion in your own living-room. Learn about plants, animals, geology, park history, and what to see and do in Zion. 23 minutes, color. VHS \$4.95, DVD (plays worldwide, English subtitles) \$14.95

### MAPS OF ZION

From topo maps, to geologic maps, to maps on CD-Rom; call us for details on which map will fit your needs.

### CREATE A LASTING RELATIONSHIP WITH ZION NATIONAL PARK

Become a member of ZNHA and enjoy benefits for yourself today while you help Zion tomorrow. ZNHA supports the Junior Ranger program, publishes books on Zion, contributes to park interpretive programs, and provides free visitor information about the park. Every year we provide thousands of dollars of aid to the National Park Service.

- Sojourns Individual \$45
- Sojourns Family \$60
- Contributor \$100
- Advocate \$250
- Lifetime \$500

As a member you receive 20% discount on books and workshops, reciprocal discounts at participating associations, quarterly newsletter, and special premiums. Most importantly, your membership helps ensure future educational and research activities in Zion.

Name \_\_\_\_\_

Address \_\_\_\_\_

City \_\_\_\_\_ State \_\_\_\_\_ Zip \_\_\_\_\_

Make checks payable to ZNHA. Mail to: Zion Natural History Association, Zion National Park, Springdale, Utah 84767. We also accept credit cards. Call 800 635-3959 for details.

# Large Vehicles



The tunnel was built for cars like this 1930s model.

THE ZION-MT. CARMEL TUNNEL IS BETWEEN THE EAST ENTRANCE AND ZION CANYON. IT WAS built in the 1920s when cars were small and few in number. Some large modern vehicles will not fit without assistance.

## Vehicle Size

Vehicles sized 7'10" in width or 11'4" in height, or larger, are required to have an "escort" (traffic control) through the Zion-Mt. Carmel Tunnel. Vehicles this size are too large to stay in their lane while traveling through the tunnel. Nearly all RVs, buses, trailers, 5th wheels, dual-wheel trucks, campers, and boats will require an escort.

## Arranging an Escort

Visitors requiring an escort *must pay a \$15 fee per vehicle in addition to the entrance fee*. Pay this fee at a park entrance before driving to the tunnel. The fee is good for two trips through the tunnel for the same vehicle during a 7-day period.

You will not be following an escort vehicle through the tunnel. Rangers will stop oncoming traffic and when the tunnel is clear, you will drive down the middle of the road. We apologize for the delays that many visitors will encounter as a result of this safety precaution. Rangers are stationed at the tunnel:

- March–mid-April, 8 am–inquire at entrance station for closing time.
- Mid-April–mid-September, 8 am to 8 pm daily.
- Mid-September–winter, 8 am–inquire at entrance station for closing time.

## Prohibited Vehicles

- Vehicles over 13'1" tall.
- Semi-trucks.
- Commercial vehicles.
- Vehicles carrying hazardous materials.
- Vehicles weighing more than 50,000 lbs.
- Single vehicles over 40' long.
- Combined vehicles over 50' long.
- Bicycles and pedestrians.



If your vehicle is 11'4" (3.4m) tall or taller or 7'10" (2.4m) wide or wider, including mirrors, awnings, and jacks, you will need a tunnel escort.

# Shuttle Schedule



Shuttle at Weeping Rock with the Great White Throne in the background.

THE ZION CANYON SCENIC DRIVE IS BY SHUTTLE ONLY FROM APRIL 4 TO OCTOBER 25, 2009. *Private vehicles are not allowed*. Plan your trip to include using the shuttle. There is room for backpacks and climbing equipment. Buses are fully accessible. *Pets are not allowed*.

## Spring & Fall

April 4–May 16 & Sept. 13–Oct. 25

### Zion Canyon Loop

Visitor Center departures  
 first bus 6:45 am  
 15 minute service 7–8:30 am  
 7-10 minute service 8:30 am–8 pm  
 15 minute service 8–9 pm  
 last bus up canyon 9:30 pm  
 last departure from Temple of Sinawava 10 pm

### Springdale Loop

Express bus up-canyon leaves Majestic View 6:30 am  
 Zion Canyon Theater departures  
 first bus 7:15 am  
 10-15 minute service 7:45 am–10 pm  
 last bus into town 10 pm  
 last departure from Majestic View 10:15 pm

## November

Voluntary shuttle on weekends; Zion Canyon Loop only. Check for schedule.

## Summer

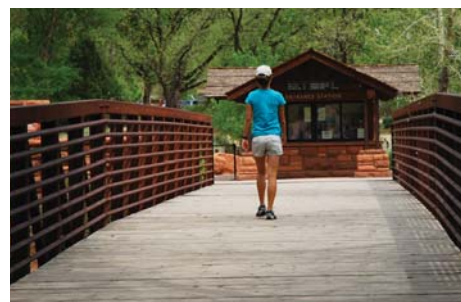
May 17–Sept. 12

### Zion Canyon Loop

Visitor Center departures  
 first bus 5:45 am  
 10-15 minute service 6:30–9 am  
 6-10 minute service 9 am–8 pm  
 15 minute service 8–9 pm  
 30 minute service 9–10:30 pm  
 last bus up canyon 10:30 pm  
 last departure from Temple of Sinawava 11 pm

### Springdale Loop

Express bus up-canyon leaves Majestic View 5:30 am  
 Zion Canyon Theater departures  
 first bus 7 am  
 10-15 minute service 7 am–10 pm  
 30 minute service 10–11 pm  
 last bus into town 11 pm  
 last departure from Majestic View 11:15 pm



Avoid parking hassles—park in town, ride the free shuttle, and walk into the park.



Shuttles take you to all trailheads and points of interest in Zion Canyon.



Zion National Park  
 A Century of Sanctuary  
 1909-2009



Printing made possible by your purchases at Zion Natural History Association bookstores. Printed on recycled paper with soy ink. Please recycle again. 5-9-09