

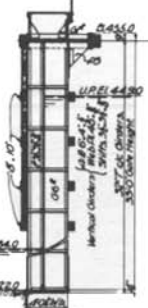


TOP VIEW

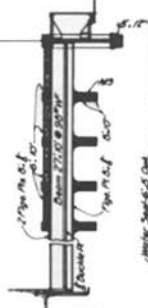
MILITARY DRAWING AND GENERAL REVISED
 Top Order: Web 75# & Eastspan Flange 20' 0" S.F. Cover Pls.
 Downstream Flange 20' 0" S.F.



PLAN OF TOP GIRDER



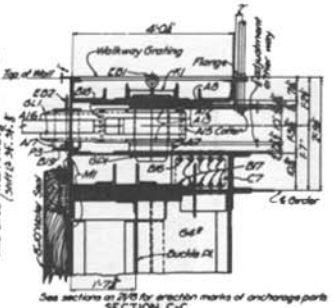
SECTION A-A



VERTICAL I-BEAM

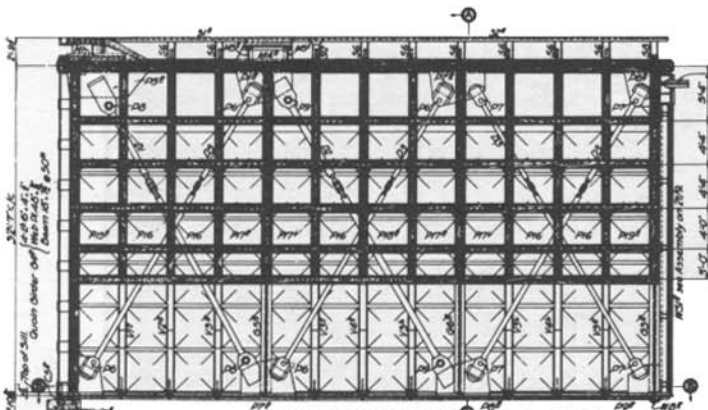


VIEW OF MITER END



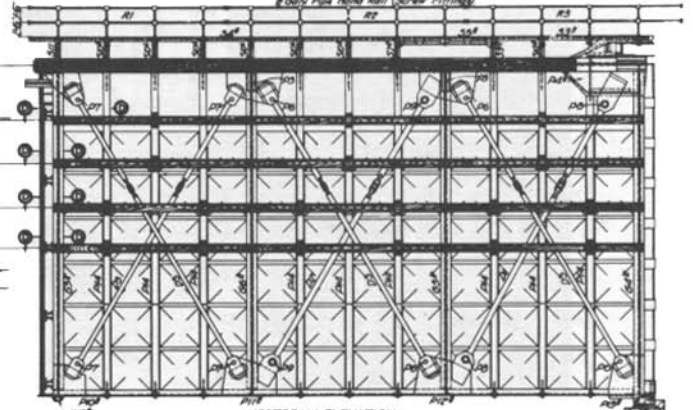
SECTION C-C

See sections on 21/8 for anchor marks of anchorage parts
 SCALE 1/2" = 1'-0"



DOWNSTREAM ELEVATION

Note location of bolts for securing tendons and anchor rivets in gusset plates near top girders to provide holes for bolts where shown. All boltheads and washers to be counterdrill side tendons.



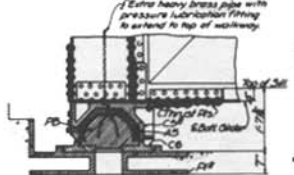
UPSTREAM ELEVATION

Note: 33'-0" gate to be installed at lower bay of main lock. Sheets 21/8, 21/9, 21/10 and 21/11 to 21/14 cover details for one pair of leaves for 33'-0" gate.

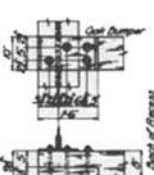


SECTION B-B

Handwritten notes: 4/20/11, 21/11, 21/12, 21/13, 21/14



SECTION THRU PINTLE



SECTION D-D

MISSISSIPPI RIVER
 LOCK & DAM NO. 24
 33 FT. LOCK GATE
 GENERAL DRAWING