

# Lewis and Clark Bicentennial Events at Cape Disappointment State Park for November 2005

**November 13th, 9:00 AM**

**Maritime Fur Trade Re-enactment**  
featuring the long boat from the Lady Washington and Chinook Canoes at the Cape Disappointment State Park boat launch on Baker Bay at the park's entrance.

**November 15th, 10:00 AM to 4:00 PM**

**Hiking Through History**  
Meet members of the Lewis and Clark Expedition at McKenzie Head between the campground and Waikiki Beach to talk about their explorations of the Lower Columbia River in 1805.

**November 18th, 10:00 AM**

**Confluence Project Dedication**  
at the boat launch at Baker Bay, enjoy speeches from artist Maya Lin and others, ceremony includes Chinook Tribal drumming.  
All day on the 18th: meet re-enactors portraying Captain Clark's party around the park, with a special campfire on Waikiki Beach at 7:00 PM.

Don't forget to visit the Lewis and Clark Interpretive Center, open 10-5 daily. Now showing a special exhibit called: "Chinookan People: Ancient Traditions-Living Today."

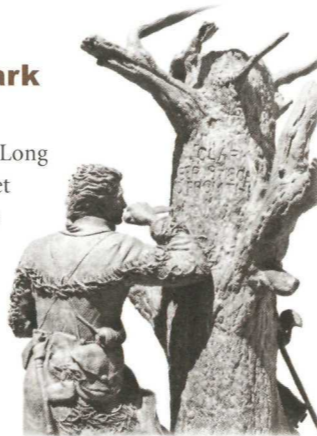


**8c**  
**Clark's Tree**

This 20-foot-tall bronze tree is an interpretation of the tree upon which Clark records that he carved his initials during the walk on shore. The original tree is long gone, no doubt swept away by tidal action many years ago.

**9**  
**Lewis and Clark Pocket Park**

Located at 300 Pacific, Long Beach, this small pocket park contains a bronze sculpture, The Mark of Triumph, which also commemorates the Captains carving their initials into local trees.



**For more information:**

[lewisandclarkwa.com](http://lewisandclarkwa.com)  
1.800.451.2542

Lewis and Clark National and State Historical Units  
[www.nps.gov/focl](http://www.nps.gov/focl)

Lewis and Clark in Washington  
[www.washingtonhistory.org/wshml/lewisandclark/index.htm](http://www.washingtonhistory.org/wshml/lewisandclark/index.htm)

Washington State Parks  
[www.parks.wa.gov/lewisandclark](http://www.parks.wa.gov/lewisandclark)

Washington State Attractions  
[www.experiencewashington.com](http://www.experiencewashington.com)

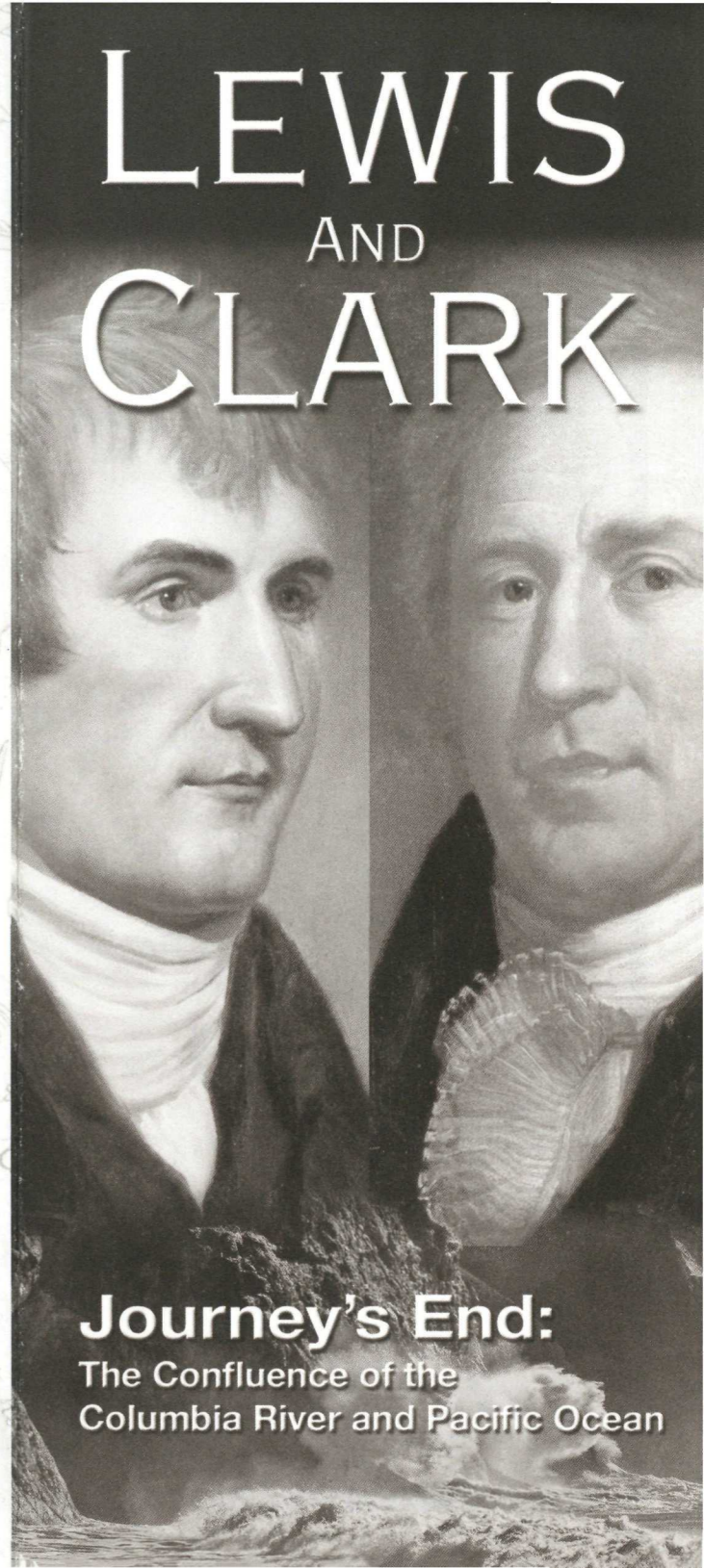
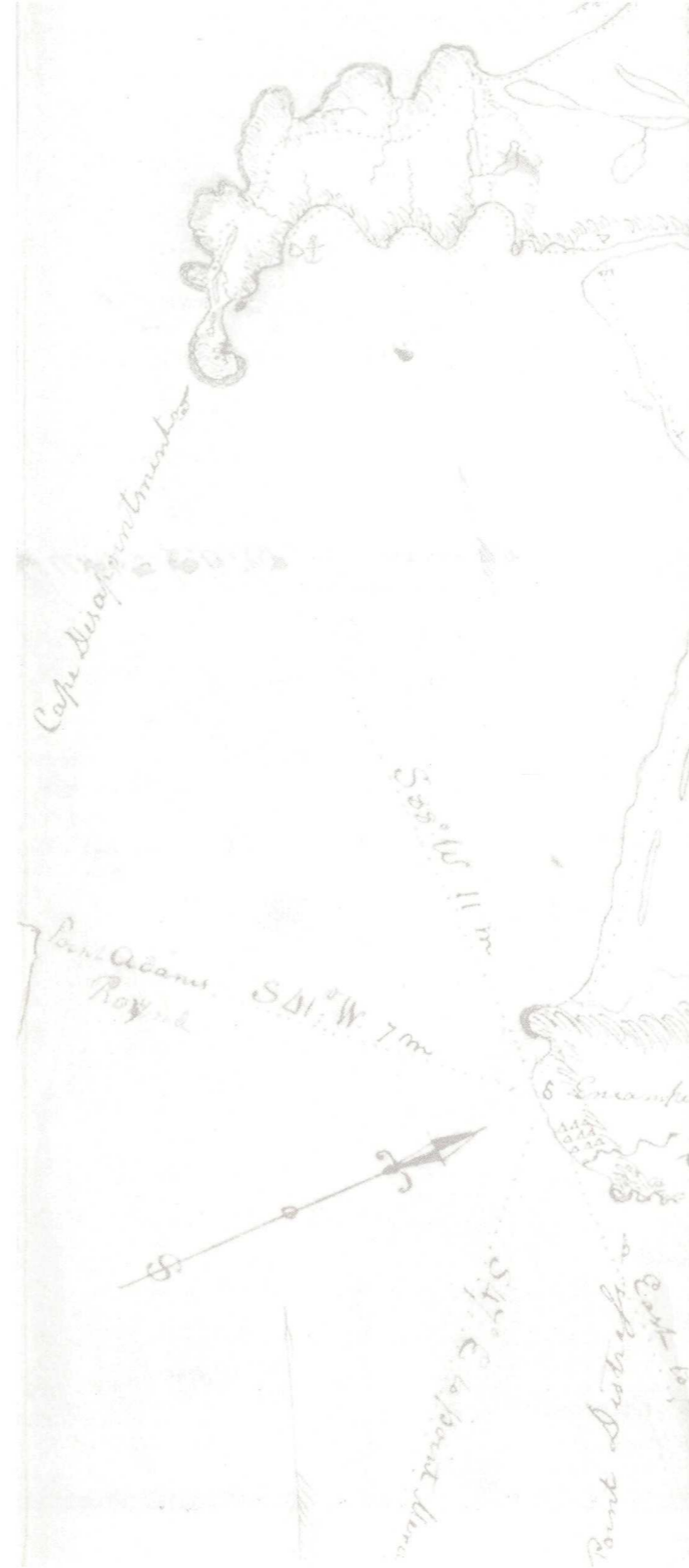
**Front Panel:** Left—Meriwether Lewis by Charles Willson Peale, from life, 1807  
Right—William Clark by Charles Willson Peale, from life, 1807-1808  
Courtesy of Independence National Historical Park

**Photos:** Lewis and Clark Interpretive Center—©Wayne O'Neil  
All other photos—Steve Riddle

**Back Panel:** Clark's map of Station Camp and Cape Disappointment  
Courtesy of American Philosophical Society



This pamphlet was produced in cooperation with the Washington State Department of Transportation and the Long Beach Peninsula Visitors Bureau.



★ **Clark's Dismal Nitch**

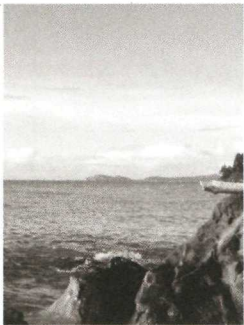
**Lewis and Clark National and State Historical Park -**

Located one mile east of the Astoria-Megler Bridge on Highway 401.



Looking upriver, one can view the area of Pillar Rock where Clark noted "Great joy in camp, Ocean in view." From the west end of the Information Center, one can look northwest to Clark's Dismal Nitch, where the Corps spent 5 days hunkered down in bad weather.

★



**Station Camp**

**Lewis and Clark National and State Historical Park -**

Near the site of a Chinook summer village, this became the location of the Corps' camp for 10 days. Taking boards from houses they thought were deserted, the men made a camp here. Later, on November 24, the famous vote as to where to

form a winter camp took place. Station Camp was also the location of the westernmost camp of the entire Expedition. St. Mary's Church is located just to the east of the site.

★ **Fort Columbia State Park**



**Lewis and Clark National and State Historical Park -**

The Fort sits on Chinook Point promontory, once the area of an important Chinook community.

The Fort features an exhibit of Chinook Tribal history as well as historic military fortifications.

4 **Proposed Condor Statue**

This life-sized statue will commemorate the sighting of a California Condor by the Corps of Discovery.

5 **Ilwaco Heritage Museum**



An official site on the Lewis and Clark National Historic Trail, the museum features artifacts of the Corps of Discovery as well as material on Chinook Tribal history and early settlers to the area. The museum also features rotating exhibits and a gift shop/bookstore. The site will feature the proposed Lewis and Clark Memorial Park.

6 **Future Confluence Artwork**

Interpretive artwork by Maya Lin will mark key confluences of the Columbia River and its tributaries with ecosystems as well as Native American and Euro-American cultures.

★

**Cape Disappointment State Park -**

7a **Lewis and Clark Interpretive Center**



**Lewis and Clark National and State Historical Park -** Sitting on a cliff above the Columbia River, the Center includes exhibits and a theatre that focus on Lewis and Clark's time in Pacific County. There is also a gift shop and bookstore.

7b **McKenzie Head Bas-Relief and Exhibits**

A commemorative bronze marker notes the location of the Clark party's overnight campsite near the Pacific Ocean. The site also includes eight interpretive panels discussing the Corps' experience in the area. These panels are located along trails to the campsite and the top of McKenzie Head.



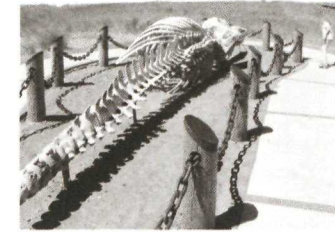
This Daughters of the American Revolution (DAR) plaque is dedicated to the members of the Corps of Discovery and is located in the campsite area.



8 **Discovery Trail**

When completed, Discovery Trail will stretch 8.2 miles between Ilwaco and Long Beach. The Trail is designed to mirror part of Clark's trek up the coastline along the Peninsula. Several monuments along the Trail record aspects of that trek.

8a **Gray Whale Skeleton**

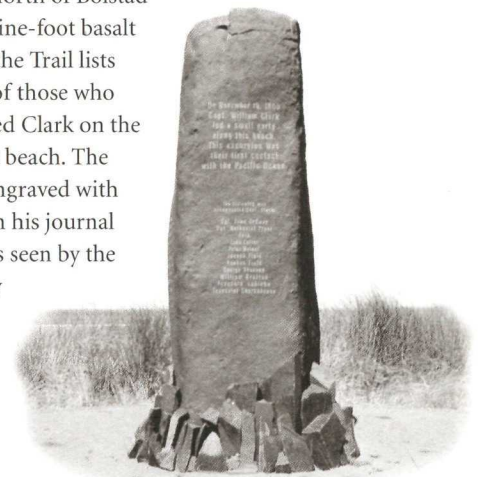


A rearticulated skeleton of an immature 38-foot Gray Whale, which had washed ashore in the area, is on display on the primary dune to the west of Discovery Trail in Long Beach. The skeleton

is reminiscent of one seen by Clark and his men on March 19, 1805, during their time on the Peninsula.

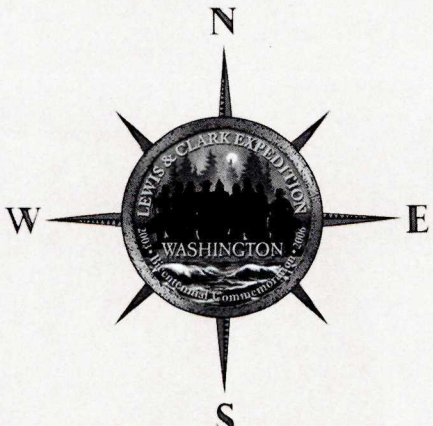
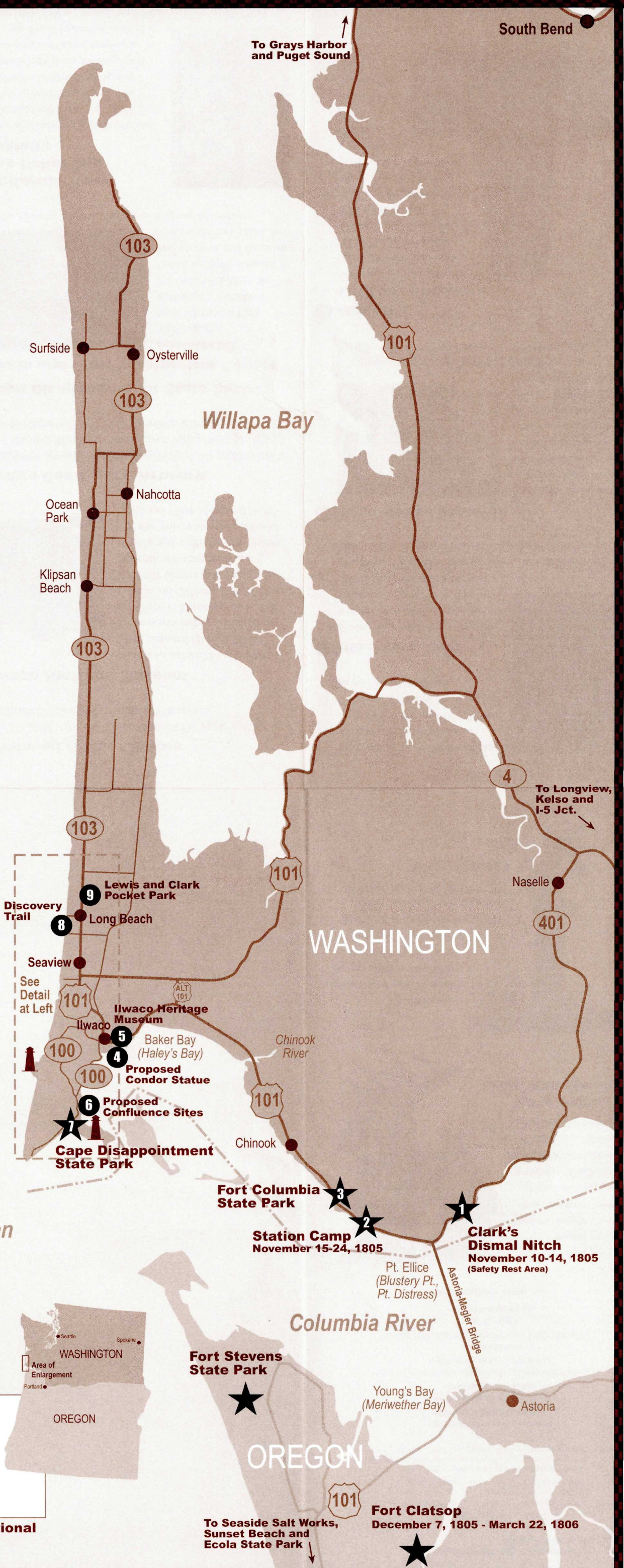
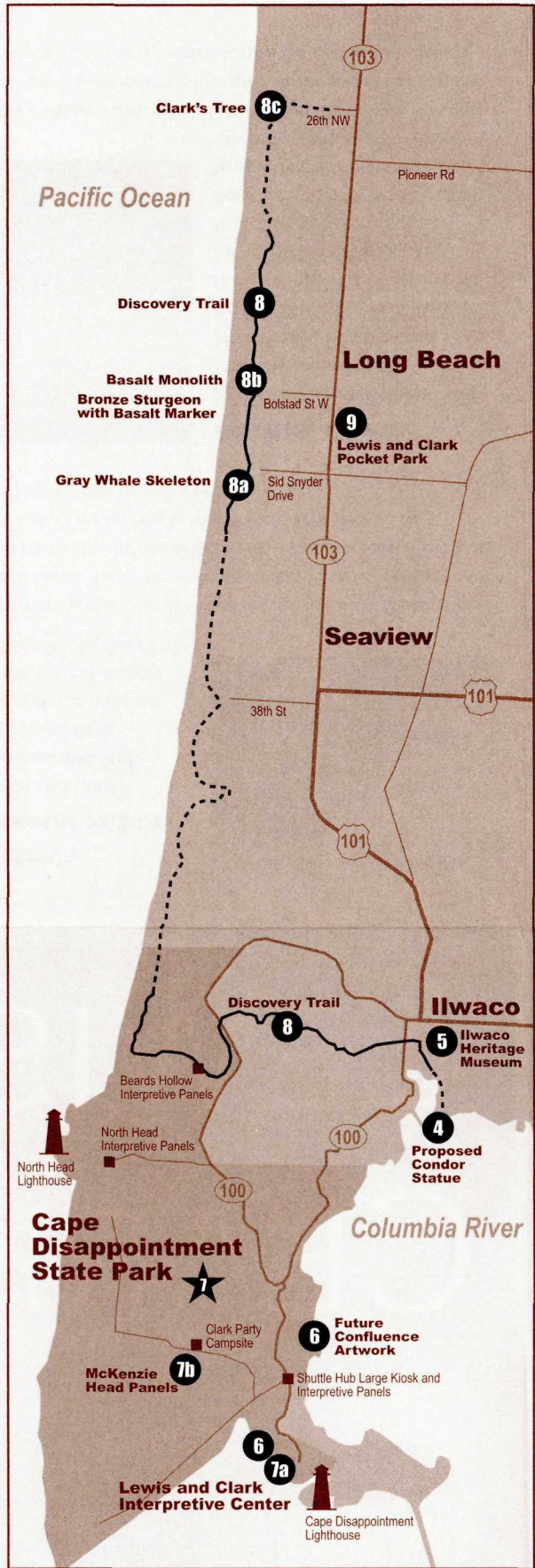
8b **Monolith**

Just to the north of Bolstad Avenue, a nine-foot basalt marker on the Trail lists the names of those who accompanied Clark on the walk up the beach. The marker is engraved with entries from his journal of the sights seen by the men as they explored this portion of the Pacific Coast.



# LEWIS AND CLARK

**Journey's End:  
The Confluence of the Columbia River  
and Pacific Ocean**



## Legend

			Lewis & Clark National and State Historical Park
			Lewis & Clark Point of Interest

For more information on the Lewis and Clark National and State Historical Park visit [www.nps.gov/focl](http://www.nps.gov/focl)

Printed Spring 2005