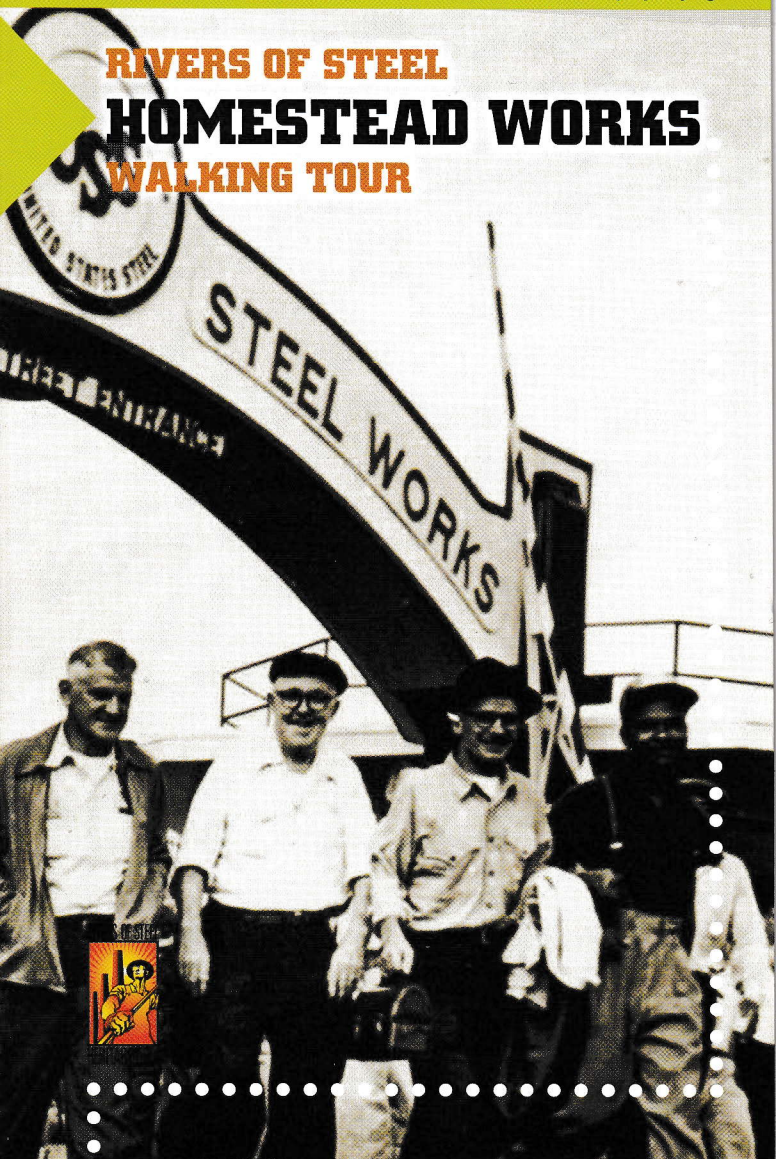


Tour Anytime  
stop. play. go.

**RIVERS OF STEEL**  
**HOMESTEAD WORKS**  
**WALKING TOUR**



412-254-2154

..... stop. play. go. ....

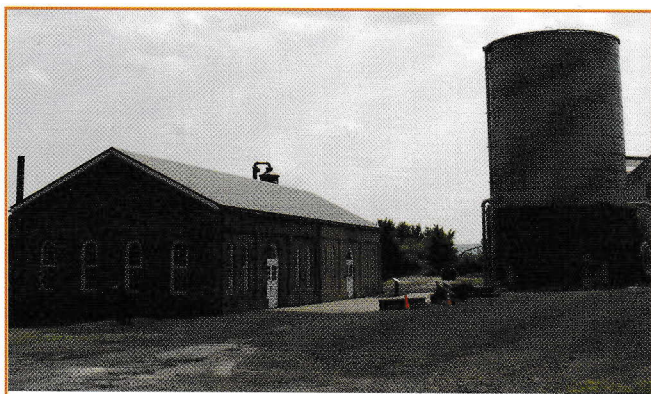
[www.touranytime.org](http://www.touranytime.org)

## **RIVERS OF STEEL HOMESTEAD WORKS WALKING TOUR**

Enjoy a peaceful walk along the Monongahela River and through the Waterfront's retail district to learn about the remaining artifacts from one of the world's largest steel mills: the Homestead Works.

Adjacent to the Monongahela River, this site was the primary battleground between the Pinkertons and the locked-out steelworkers. For more information about the Battle of Homestead, try our Battle of Homestead Walking Tour.

Directly across the river from the start of this tour are the Carrie Furnaces, a National Historic Landmark.



### **TOUR LOCATION**

This three-mile walking tour takes place at the Waterfront development in Homestead, West Homestead, and Munhall, PA, the former site of the Homestead Works. The tour loop conveniently begins and ends at the Pump House & Water Tower, the site of the "Battle of Homestead" (located at 880 East Waterfront Drive). This site is located across the street from the US Steel Research and Technology Center.



Welcome to the Tour Anytime network—your 24/7 source for self-guided cell phone and MP3 tours of the historic and cultural heritage of southwestern Pennsylvania.

Hosted by the Rivers of Steel National Heritage Area in partnership with many of the region's premier tourism sites, the Tour Anytime network is your source for walking, museum, and individual site tours based on your schedule.

For an up-to-date listing of the tours available, go to [www.touranytime.org](http://www.touranytime.org).

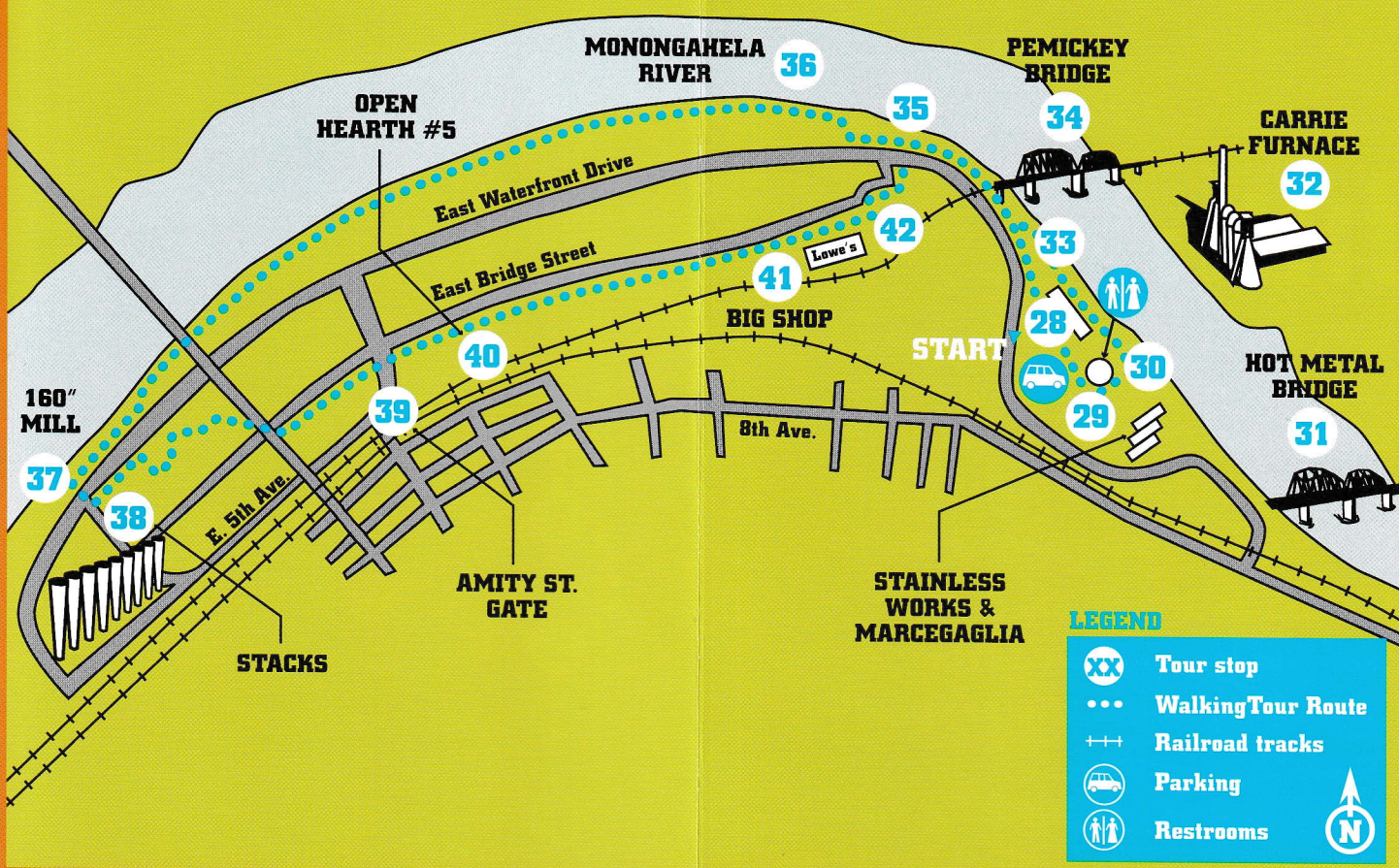
### **TOUR PROVIDER**

The mission of the Rivers of Steel National Heritage Area is to conserve, interpret, promote, and manage the historic, cultural, natural, and recreational resources of steel and related industries in Southwestern Pennsylvania, and to develop the use of these resources so that they may contribute to the revitalization of the region.

#### **Rivers of Steel National Heritage Area**

The Bost Building  
623 East 8th Avenue  
Homestead, PA 15120  
Phone: 412-464-4020

Email: [touranytime@riversofsteel.com](mailto:touranytime@riversofsteel.com)



**28** Site & Mill History

**29** Stainless Works & Marcegaglia

**30** 48" Mill

**31** Hot Metal Bridge

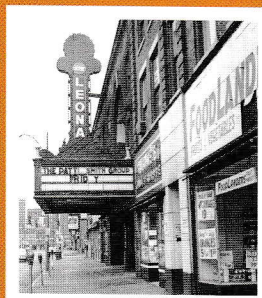
**32** Carrie Furnace

**33** Pump House & Bells

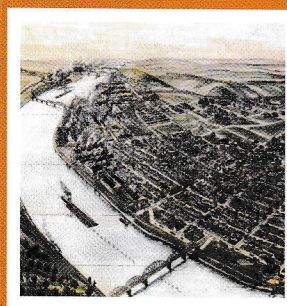
**34** Pemickey Bridge

**35** Structural Steel

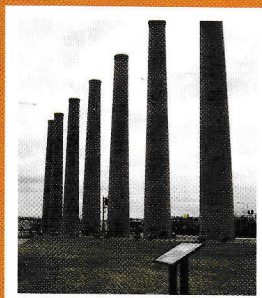
**36** Monongahela River



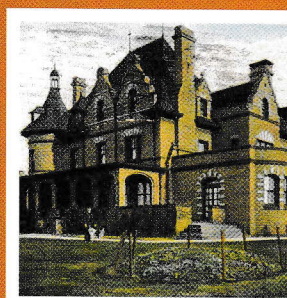
Leona



Homestead 1902



The Stacks



Superintendent  
Col. A. R. Hunt's home

**37** 160" Mill, Oral History  
Water Purification Plant,  
Gantry Crane

**38** Stacks

**39** Amity St. Gate  
& Progress

**40** Open Hearth #5

**41** Big Shop

**42** 12,000-ton Press

# HOW TO USE Tour Anytime

stop. play. go.

A few simple instructions are all you need to start your audio tour:

- 1** Go to the location on the map (or listen anywhere you desire!).
- 2** Dial the number listed on the front of this brochure or that you received on your Access Pass.
- 3** Enter the audio stop number on your cell phone keypad. Audio stop numbers are displayed in your brochure (and sometimes on Tour Anytime signs).
- 4** To stop an audio tour clip, press any number on the keypad (press any key to start again).
- 5** Disconnect the call while walking between stops and you can rejoin the tour as many times as you like by hitting your redial button (hit send button twice on most phones).
- 6** Enjoy!

## FUNDING PROVIDED BY:



## TOUR DISCLAIMER

- 1) In addition to using your cell phone minutes, you may be charged for roaming if you are outside your home area. (If it is a roaming call, you may not want to participate in this audio tour.)
- 2) When taking a Tour Anytime tour, please be aware of your surroundings. Please obey all traffic signals and be careful crossing streets.