

# Silos & Smokestacks

National Heritage Area

2016-2017 Visitors Guide



*Experience the Heart of America™*



*Where the Story  
of American Agriculture  
Comes to Life.™*

# Silos & Smokestacks

*Where the Story of American*



There is a special corner of the universe where tall fields of corn dance to a windblown melody ...where summer days are measured in funnel cake and barbecued ribs...and children squeal with laughter at the sight of a newborn calf kicking up its heels for the first time.

This is Silos & Smokestacks National Heritage Area in Northeast Iowa, a 37-county, 20,000-square-mile storybook that tells a vivid and enthralling tale, capturing the imagination of visitors of all ages.

We hope you will join us for an agricultural experience you won't find anywhere else on earth. Why not come and create your own memories?

Northeast Iowa is a patchwork quilt of stories... the personality of the landscape, the richness of the soil, the history of farming, the dreams of the folks who live here.

# National Heritage Area

*Agriculture Comes to Life.*



Silos & Smokestacks is the connecting thread in this colorful fabric of agricultural experiences. Designated as America's Agricultural Heritage Partnership, Silos & Smokestacks is affiliated with the National Park Service.

No other region in the United States shares our rich agricultural legacy. From dairy farms and museums to vineyards and tractor assembly tours, there are practically endless agricultural adventures awaiting individual travelers and families.

Whether you want to spectate or participate... stay for the day or for the week...we have an agricultural experience to fit your timeframe and personal preference.

Silos & Smokestacks National Heritage Area... *"Where the Story of American Agriculture Comes to Life."*™ This is the place to visit when you want an adventure you will remember and relive for a lifetime.

# National Heritage Area

Silos & Smokestacks National Heritage Area is proud to be an Affiliated Area of the:

National Park Service  
U.S. Department of the Interior

[nps.gov/history/heritageareas](http://nps.gov/history/heritageareas)



A National Heritage Area is a region that has been recognized by the United States Congress for its unique qualities and resources. It's a place where a combination of natural, cultural, historic and recreational resources have shaped a cohesive, nationally distinctive landscape arising from patterns of human activity influenced by geography. These patterns make National Heritage Areas representative of the national experience through the physical features that remain and the traditions that have evolved in the areas. To find out more about National Heritage Areas or the 49 designated regions, visit [NationalHeritageAreas.com](http://NationalHeritageAreas.com)

# 2016

National Park Service  
CENTENNIAL

The National Park Service turns 100 in 2016! In celebration of the Centennial, the National Park Service kicked off the Find Your Park movement to inspire all people to connect with, enjoy, and support America's national parks. Find Your Park is about more than just national parks. It's about the National Park Service working in your community through education programs, community assistance projects, and more. It's about state parks, local parks, trails, museums, historic sites, National Heritage Areas and the many ways that the American public can connect with history and culture, enjoy nature, and make new discoveries. Join the movement at [FindYourPark.com](http://FindYourPark.com) and by using [#FindYourPark](https://twitter.com/FindYourPark) on social media when you visit one of Silos & Smokestacks' partner sites!

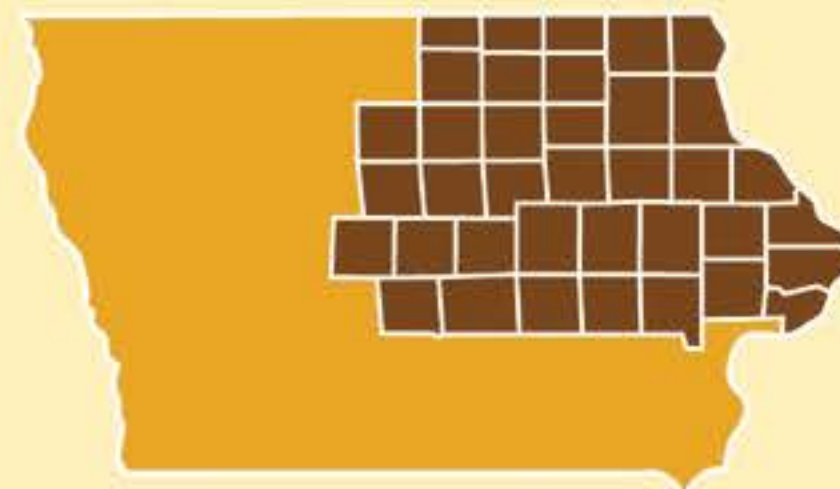


## National Park Service Passport Program

Silos & Smokestacks National Heritage Area participates in the National Park Service's (NPS) Passport Cancellation Stamp Program. Your passport can be stamped at any of the 16 participating Partner Sites in the Silos & Smokestacks area listed below.



- 4 Amana Heritage Society Museums ..... Amana
- 24 Cedar Rapids Museum of Art ..... Cedar Rapids
- 13 Family Museum..... Bettendorf
- 95 Fossil & Prairie Park Preserve & Center Rockford
- 59 Gilbertson Conservation Education Area ... Elgin
- 105 Grout Museum District..... Waterloo
- 19 Hartman Reserve Nature Center ..... Cedar Falls
- 25 Indian Creek Nature Center ..... Cedar Rapids
- 16 Iowa's Dairy Center ..... Calmar
- 101 Living History Farms ..... Urbandale
- 54 Mines of Spain Recreation Area ..... Dubuque
- 27 National Czech & Slovak Museum & Library  
..... Cedar Rapids
- 55 National Mississippi River Museum & Aquarium  
..... Dubuque
- 41 Putnam Museum & Giant Screen Theater  
..... Davenport
- 46 State Historical Building ..... Des Moines
- 43 Vesterheim Norwegian-American Museum  
..... Decorah



Silos & Smokestacks National Heritage Area  
Located in 37 Iowa Counties

# Contents

<b>Welcome .....</b>	<b>2 &amp; 3</b>
Why Northeast Iowa is considered the Heart of America	
<b>National Heritage Areas .....</b>	<b>4</b>
National Park Service and Alliance of National Heritage Areas	
<b>NPS Passport Program .....</b>	<b>4</b>
<b>The Story of American Agriculture .....</b>	<b>6 &amp; 7</b>
<b>Heritage Area Experiences .....</b>	<b>8 &amp; 9</b>
Explanation of Icons and what you will experience as part of this region's rich agricultural history	
<b>Site Key .....</b>	<b>10</b>
Explanation of site listings	
<b>Sites &amp; Attractions .....</b>	<b>10 - 49</b>
From dairy farms and museums to vineyards and tractor tours, there's an experience for you	
<b>Plan Your Visit .....</b>	<b>49</b>
Visit our website for current information regarding sites and attractions	
<b>Day Trip Planner .....</b>	<b>50</b>
Shows which sites are clustered in which cities to simplify trip planning	
<b>Heritage Area Map .....</b>	<b>51 &amp; 52</b>
Shows site locations as they relate to the Day Trip Planner	
<b>Featured Festivals &amp; Events .....</b>	<b>53</b>
Glimpse of annual site events taking place within our 37-county region	
<b>Silos &amp; Smokestacks Photo Contest .....</b>	<b>54</b>

---

Guide cover photograph courtesy of Sarah Strandburg at Winneshiek County Historical Society - Locust School Museum, Title: Sack Race

# The Story of

## The Fertile Land

Iowa has some of the most fertile soils in the world. This “black gold” is found in Northeast Iowa’s gently rolling terrain, molded by climate, water and prairie plant life. The region boasts a colorful heritage that is still evolving today. Tilling the soil is a legacy born many years ago by American Indians, who combined farming along river valleys with seasonal hunting, fishing and gathering. When pioneers arrived in Iowa and began tilling the prairie soil, they soon learned that farming – with its long hours and extreme physical demands – is a worthy, noble profession. And it certainly is not a job for the feeble-hearted. It takes a special spirit to withstand the whims of the weather, to rise above each hail storm or rainy season, and not only survive, but thrive...to come back to the field again and again, to replant, harvest and rejoice.

## Farmers & Families

Many of the work ethics and life philosophies found in today’s American farmers can be traced to their ancestors, the pioneers. Tilling virgin land, surviving the harsh extremes of weather and living far from people and towns were the building blocks of the early farmer’s character: frugality, ingenuity and stamina. In Northeast Iowa, these character attributes are also colored by the influences of family heritage rooted in Germany, Norway, Czech Republic and Slovakia.

## The Changing Farm

Farming in the United States has changed through the years as improvements were made in the machines used for planting and harvesting, and new strains of seed grains were developed that offered greater yields. But perhaps an even more significant influence in the American farming evolution is the relationship between farmer and consumer. Over the years, farmers have focused their fields on providing the products that consumers are demanding at an affordable price. The popularity of the ‘buy local’ movement encourages consumers to learn where their food comes from and form relationships with farmers. Farmers’ responsiveness doesn’t end at the American grocery store; they are also influenced by the world’s demand for food supplies.

Domestic and international market pressures continue to spur transformation. Many large American farms have become specialized while many small family farms have diversified. It takes all sizes and kinds of producers - small, large, organic and specialized - to meet extensive consumer demands.

Changes in farming have resulted in changes to the farm landscape. As a way to protect our natural resources and their livelihood, farmers have implemented many different kinds of soil and water conservation practices such as buffer strips, terraces, and planting cover crops.



# American Agriculture

## Organizing for Agriculture

Iowa farmers are true survivors, utilizing self-reliance and determination to sustain their way of life. This has often been extremely difficult due to dramatic fluctuations in the market value of the grains and livestock that are their livelihood. Farmers have a history of organizing their strength collectively through groups like the Grange and the Farm Bureau. These organizations have enabled farmers to lobby for policies that favor agriculture at the state and federal level, empowering them to influence the price of crops and livestock products.



## Higher Yields

The determination of Iowa farmers to get the best return for their efforts has led to a momentous transformation in the quantity and quality of grains and livestock produced on Iowa farms. The first agricultural transformation arrived with the steel plow, which led to increased national grain production. Next came the tractor, retiring horses from the chore of plowing while increasing the size of the fields that could be farmed with less labor. In the current transformation, farmers use new technology like GPS to prevent over-application of fertilizers and pesticides, and solar panels and wind turbines to generate electricity for their farms.

## Farm to Factory

In the early days of farming, livestock and grain products were processed locally to serve local and regional markets. These facilities had limited capacity, which in turn restricted the amount of livestock and grain farmers could produce. But advances in refrigeration, transportation and processing changed all that, greatly expanding the markets for Iowa's products. Today, delivering farm products from fields to tables has become a multi-billion dollar, multi-national industry. Cargill and Amana have become successful, internationally-recognized companies for producing retail goods with Iowa products and labor.



# Silos & Smokestacks National Heritage Area

## 2016-2017 Visitors Guide



### SCENIC ROUTES

Leave traffic and your cares behind as you meander through picturesque landscapes, taken straight from a Grant Wood painting. Tucked away within the rolling hills and gentle valleys, discover historic communities and farmsteads, seemingly untouched by time.



### HISTORIC SITES

Relive the story of an era, rich in history, within the sites and communities of the region. Many have been restored to their original splendor and are listed on the National Register of Historic Places.



### FARMS & WINERIES

You won't find food fresher than down on the farm. Whether you're feeding a baby calf or picking fresh produce, a day on the farm allows you to reconnect with your roots. Down the road a bit, find a local vineyard and sample an array of fine Iowa wines while you learn the art of winemaking.



### MUSEUMS & GALLERIES

Step back in time and discover the distinctive regional heritage through the diverse collections of artwork and artifacts, displayed in engaging exhibits. Visit an open-air museum and watch while interpreters bring the region's unique story to life.



# Heritage Area Experiences



## PARKS & NATURE CENTERS

Explore the connections between the land and the people as you stroll down a nature trail, through tall grass prairies and over historic country bridges. The preserved prairies, wetlands and forests are reminiscent of scenes captured in the writings of Laura Ingalls Wilder.



## FAIRS

Delight in the sights, sounds and smells of a traditional Iowa summer, featuring family entertainment and a wide array of mouth-watering food. The Heritage Area hosts an endless number of fairs and cultural events, including the legendary Iowa State Fair.



## BED & BREAKFASTS

Wind down as you enjoy traditional Midwestern hospitality in one of the region's charming country inns, each with its own unique nuances. Wake up to the smell of old-fashioned home cooking.



## FARM MACHINERY

The changes in agriculture can readily be seen in farm equipment. Relive the days of old by seeing a horse drawn plow up close, gaze upon the massive size of a steam powered tractor, find a tractor used by your ancestors or observe today's machinery come to life at a modern manufacturing plant.

# Site Key

**S**ilos & Smokestacks' Visitors' Guide features 115 Partner Sites, formally designated with sharing their own piece of America's agriculture story. Each one includes a photo and description of the site, along with a variety of other information to help make planning your day-trip or weekend getaway easier.

**National Park Service Passport Program** – Stamp icon indicates site is one of 16 sites participating in this program. (See page 4 for more details.)

**Site Overview** – Brief description of each location highlighting key events, programs and points of interest.

**Address & Phone** – Plug it into your GPS for directions to the doorstep.

**Hours** – Every site is different and many have seasonal changes to their hours. Start here but confirm on the site's website.

**Admission** – The great thing about most of the Silos & Smokestacks sites is they are very affordable and in many cases free.

## Vesterheim Norwegian - American Museum



43

**W**ith over 24,000 artifacts and an Open Air Division of 12 historic buildings, this national treasure showcases the best in historic and contemporary Norwegian folk and fine arts, and the agricultural history of Norwegian immigrants. By telling the story of Norwegian immigrants, Vesterheim explores the experience of all immigrants in America. Come for festivals, special group tours or any time.

[vesterheim.org](http://vesterheim.org)

502 W Water St  
Decorah  
563-382-9681

**Hours:** May-Oct, daily 9-5.  
Nov-Apr, daily 10-4.  
**Admission:** \$10 adults, \$8 seniors 65+ and \$5 children 7-18 yrs. Free on first Thursday of every month.

**Site Names** – Listed in alphabetical order.

**Site Photo** – Quick glance at what you can expect to see on your visit.

**Map Location No.** – A City-by-City guide on page 50 helps you plan day trips to several sites in a localized area. The map on pages 51 & 52 shows the orientation of these clusters of attractions.

**Experience Icons** – Eight different icons have been developed to give you a quick glance at what type of experience you can expect at each site. (See pages 8 & 9.)

**Website Address** – We encourage you to visit each individual website to check and confirm hours, fees and any special events prior to your visit.

**Site Amenity Icons** – Know at a glance which amenities can be found at any particular site.

- = Restrooms Available
- = Handicap Accessible
- = Gift Shop on Site

## 1876 Coralville Schoolhouse



37

**B**uilt in 1876, this two-room red brick schoolhouse served the children of the Coralville area until 1951. Visitors experience a typical classroom that would have been familiar to rural and small-town students in the late 19th century. Relive life at an ungraded schoolhouse through a variety of interactive exhibits.

[johnsoncountyhistory.org](http://johnsoncountyhistory.org)

310 5th St  
Coralville  
319-351-5738

**Hours:** Open by appointment.

**Admission:** Free.



### Fun Facts:

One acre is about the size of a football field without its end zones.

[campsilos.org](http://campsilos.org)

## 4-H Schoolhouse Museum



**A** 1907 one-room school where the 4-H emblem was first introduced. In the early 1900s, 4-H clubs began throughout the U.S. to engage youth in “learning by doing” for a better agricultural education.

[clarioniowa.com/  
pages/Museums/](http://clarioniowa.com/pages/Museums/)

210 1st St SW  
Clarion  
515-532-3453

**Hours:** June-Aug by appointment, call for additional times.

**Admission:** Free.

## Ackley Heritage Center



**T**he Ackley Heritage Center’s purpose is to preserve, interpret and exhibit the history of Ackley, its people and agricultural heritage through exhibits, photographs and local and family research, including Friesen ancestry.

[ackleyheritagecenter.com](http://ackleyheritagecenter.com)

Heritage Center Museum  
120 State St;  
Settlement of the Prairie Site  
108 Butler St;  
Soda Fountain  
701 Park Ave  
Ackley  
641-847-2201

**Hours:** Heritage Center Museum: Tues, Thurs & Fri 1:30-4:30. Settlement of the Prairie Site: Open by reservation or appointment. Soda Fountain: June-Sept, Tues-Fri 3-7 or by reservation.

**Admission:** Free.

## African American Museum of Iowa



**T**he African American Museum of Iowa features the rich history, heritage and culture of Iowa’s African Americans. The permanent exhibit, “Endless Possibilities” covers African American history from pre-slavery times in Africa to present day struggles and accomplishments in Iowa.

[blackiowa.org](http://blackiowa.org)

55 12th Ave SE  
Cedar Rapids  
319-862-2101

**Hours:** Year-round, Mon-Sat 10-4.

**Admission:** \$5 adults, \$4 seniors, \$2.50 children & students.



African American  
Museum of Iowa

### Amana Heritage Society Museums



The seven villages of the Amana Colonies were settled by a German religious group in the 1850s. They established a communal village-based agricultural system that is a marked contrast to the Midwest family farm tradition. The story of Amana's past and present is told by its landscape and historic buildings that include barns, stores, churches, and communal kitchen houses.

[amanaheritage.org](http://amanaheritage.org)

Amana Heritage Museum,  
705 44th Ave, Amana.  
Amana Community Church,  
4210 V St, Amana.  
Homestead Blacksmith Shop,  
4430 V St, Homestead  
Communal Kitchen & Cooper  
Shop Museum,  
1003 26th Ave, Middle Amana  
Communal Agriculture Museum,  
505 P St, South Amana.  
319-622-3567

**Hours:** Contact  
[amanaheritage@southslope.net](mailto:amanaheritage@southslope.net)  
or check website for open dates  
& hours.

**Admission:** Fees at some  
locations. ♿ ♿ ♿

### Barn Quilts of Grundy County



The Barn Quilts of Grundy County, Iowa's Original Barn Quilt Project, includes a 64-mile loop tour through the towns and fields of Grundy County to showcase over 65 colorful quilt blocks painted on the sides of barns and other farm buildings. It highlights the many ag-related businesses and small specialty shops along the way.

[grundycountyia.com](http://grundycountyia.com)

705 F Ave  
Grundy Center  
319-825-3606 or  
319-824-6979

**Hours:** Self-guided tours  
year-round.

**Admission:** Free. ♿ ♿ ♿

### Belmond Historical Society Museum



Step into Belmond's past at the Belmond Historical Museum. Learn the impact the sugar beet industry had on the community a century ago. Commemorate the sacrifices its veterans have made to our country during peace and war. Revisit the devastating 1966 tornado, or just experience the simpler times in everyday life exhibits.

[belmondmuseum.com](http://belmondmuseum.com)

223 E Main St  
Belmond  
515-571-3264

**Hours:** Year-round, Mon-Fri  
10-2; May-Aug, Sat 10-2.

**Admission:** Free. Donations  
accepted. ♿ ♿

### Bennington No. 4 School



Bennington No. 4 is a one-room school built in 1911. Listed on the National Register of Historic Places, it is located on its original site amid active farms in rural Bennington Township. Experience 20th century life from 1945-1955 at the school and three outbuildings.

Corner of E Bennington  
and Sage Roads,  
Bennington Township  
Waterloo  
319-233-4974

**Hours:** By appointment only.

**Admission:** Free. ♿ ♿ ♿





# IT TAKES AN IOWAN

*It Takes An Iowan*, a new traveling exhibit created by Silos & Smokestacks National Heritage Area, brings to light Iowans as leaders in the ongoing endeavor to provide food for the nation and the world. Iowans are not only leaders in the advancement of agriculture, but also in education, technology and research. Visitors are encouraged to explore how they can make a difference.



Visit [ItTakesAnIowan.com](http://ItTakesAnIowan.com) to find out where the exhibit is on display.

# Silos & Smokestacks National Heritage Area

## 2016-2017 Visitors Guide

### Brucemore



**I**owa's only National Trust Historic Site, Brucemore is a 26-acre park-like estate in the heart of Cedar Rapids. The Delightful Queen Anne style mansion was built between 1884 and 1886 by Caroline Sinclair, widow of pioneer industrialist T.M. Sinclair. The home to three prominent Cedar Rapids Families, the estate continues to be a hub for cultural, philanthropic and educational activities

[brucemore.org](http://brucemore.org)

2160 Linden St  
Cedar Rapids  
319-362-7375

**Hours:** Visitor Center: Mon-Sat 9-5, Sun 12-4; Interpretive Tours of Mansion: Mar-Dec, Tues-Sat 10-3, Sun 12-3. Gift Shop: Mon-Sat 9-5; Mar-Dec, Sun 12-4. Special Events year-round. Inquire for more information.

**Admission:** Interpretive Tours: \$7 adults, \$3 students 6-18 yrs, free for members of Brucemore or National Trust for Historical Preservation. ♿ ♻️

### Calkins Nature Area



**N**ature Area includes timber, prairie, stream, pond, Iowa River, American Indian/Natural History Museum and live native animal displays.

[hardincountyconservation.com](http://hardincountyconservation.com)

18335 135th St  
Iowa Falls  
641-648-9878

**Hours:** Year-round, Mon-Fri 8-4.

**Admission:** Free. ♿ ♻️

### Carl & Mary Koehler History Center



**P**rovides a gateway orientation to Linn County, from prehistoric occupation and rural farming communities to urban immigration culture, manufacturing, food production and communications industries.

[historycenter.org](http://historycenter.org)

615 1st Ave SE  
Cedar Rapids  
319-362-1501

**Hours:** Year-round Tues-Sat 10-4.

**Admission:** Free. Recommended donations of \$5 adults, \$3 children. ♿ ♻️

### Carnegie Cultural Center



**F**eatures permanent exhibits of models and miniatures focusing on rural culture and small town life including Uncle Joe's Farm & Bob's Mini-machines, Paths and Power, the Railroad Room & Ben's Old Time Autos, Natvig Brother's Circus, Toy Town, Billy J's Clown Circus, Carts & Carriages, and Jerry's World. New temporary exhibits every 6-8 weeks. Housed in 100-year-old Carnegie building.

[carnegieculturalcenter.org](http://carnegieculturalcenter.org)

7 N Water Ave  
New Hampton  
641-394-2354

**Hours:** June-Aug, Wed-Fri 12-6, Sat 10-4, Sun 1-4; Sept-May, Thurs 12-6, Sat 10-4, Sun 1-4 or by appointment. Closed in January.

**Admission:** Free. ♿ ♻️



# Sites & Attractions

Sites B - C

## Carrie Lane Chapman Catt Girlhood Home



**G**irlhood home of Carrie Lane Chapman Catt; suffragist, founder of the League of Women Voters and activist in the cause for world peace. The site, located on ten acres, includes a museum, interpretive/education center, two acre prairie and heritage apple orchard.

[catt.org](http://catt.org)

2379 Timber Ave  
Charles City  
641-228-3336

**Hours:** Memorial Day thru Labor Day, Mon-Sat 10-4, Sun 12-4 or by appointment.

**Admission:** Free. Donations gratefully appreciated. ♿

## Carson Art Gallery



**I**owa's farming and railroad heritage is captured in many scenes on the walls of the formal parlor in this beautiful restored Victorian farm home. Mammoth locomotives, antique tractors, Century farms, delicate florals and botanicals all bring forth precious memories of days gone by. While here, ask to see a tractor restoration in progress.

33635 140th St  
Ackley  
641-847-3429

**Hours:** By appointment or by chance.

**Admission:** Free. ♿

## Cascade Historic Limestone Silo



**T**he cornerstone of our site is the interpretation of the early Midwestern farmers and farmsteads displayed in the historic limestone silo built in the early 1930s. Antique agricultural equipment, in addition to interpretive signage, provide visitors knowledge of how early farmers worked the lands, used the local natural resources and helped support the economy of America.

[cityofcascade.org](http://cityofcascade.org)

215 Pierce St SW  
Cascade  
563-852-7595

**Hours:** Year-round, Sunrise-Sunset.

**Admission:** Free. ♿

## Cedar Falls Historical Society



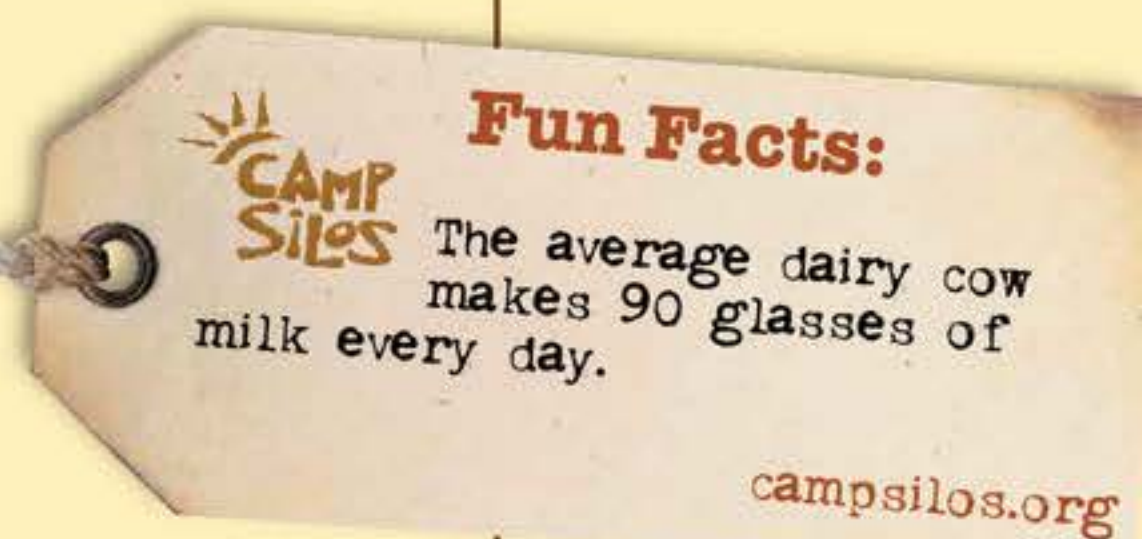
**V**isit the only museum in the U.S. that tells the story of ice harvesting in an original ice house, The Ice House Museum of the Cedar Falls Historical Society. Try hands on activities, watch videos, and experience an international industry that brought fresh food to the world. Learn how this once-common business transformed our culture and daily lives.

[cfhistory.org](http://cfhistory.org)

Ice House Museum,  
121 Center St.  
Victorian Home & Carriage  
Museum, 308 W 3rd St.  
Little Red Schoolhouse Museum,  
205 W 1st St  
Behrens-Rapp Visitor Center,  
221 W 1st St  
Cedar Falls  
319-266-5149

**Hours:** Ice House Museum: May-mid-Oct, Wed 1-4, Sat 10-4, Sun 1-4. Victorian Home & Carriage House Museum: Feb-Dec, Tues-Sat 10-4, Sun 1-4. Little Red Schoolhouse Museum: May-Sept, Wed, Sat & Sun 1-4; Jun-Aug, Wed 1-4. Behrens-Rapp Visitor Information Center: May-Oct, daily 8-8.

**Admission:** Ice House Museum: \$5, 12 & under free. All other sites free. Donations accepted. ♿



# Silos & Smokestacks National Heritage Area

## 2016-2017 Visitors Guide

### Cedar Rapids Museum of Art



24

**V**isit the extraordinary world of the Cedar Rapids Museum of Art! Come see the largest collection of works by regionalist artist Grant Wood and visit his studio. View more than 2000 years of art, from Roman busts to Marvin Cone, to master printmaker Mauricio Lasansky, we've got something for everyone.

[crma.org](http://crma.org)

Cedar Rapids Museum of Art,  
410 3rd Ave SE  
Grant Wood Studio,  
810 2nd Ave SE  
Cedar Rapids  
319-366-7503

**Hours:** Art Museum: Tues, Wed, Fri, Sun 12-4, Thurs 12-8, Sat 10-4. Closed on major holidays. Grant Wood Studio: Apr-Dec, Sat & Sun 12-4.

**Admission:** Art Museum \$5 adults, \$4 college students (with ID) & seniors (62+). Members and children 18 yrs & under are free. Grant Wood Studio: Free.

### Cedar Rock the Walter House



74

**O**ne of Iowa's early large-scale farm operators contracted Frank Lloyd Wright in 1946 to design a home for them. What resulted is Cedar Rock. Starting at the park's visitor center, enjoy a leisurely wagon ride to the estate and a guided tour of this modern house.

[friendsofcedarrock.org](http://friendsofcedarrock.org)

2611 Quasqueton Diagonal Blvd  
Independence  
319-934-3572

**Hours:** Memorial Day weekend thru Oct, Wed-Sun 10-3. Please call ahead to schedule your visit.

**Admission:** \$5 donation requested 12 yrs & over.

### Cedar Valley Arboretum & Botanic Gardens



104

**T**he Cedar Valley Arboretum and Botanic Gardens is a 35 acre oasis of natural beauty that can be found directly east of Hawkeye Community College in Waterloo, IA. We have over 15 different formal gardens, including a national-award winning Children's Garden, our Master Gardeners Orchard featuring four types of fruit and a four acre Butterfly Meadow!

[cedarvalleyarboretum.org](http://cedarvalleyarboretum.org)

1927 E Orange Rd  
Waterloo  
319-266-4966

**Hours:** May-Oct, Mon-Sat 9-7, Sun 11-7. Nov-Apr, Mon-Fri 9-5.

**Admission:** Adults \$3, children 5-17 yrs \$1. Children under 5 yrs are free.

### Clinton County Historical Society Museum



36

**L**ocated near Clinton's beautiful Riverfront Park, the Clinton County Historical Society Museum intertwines the past and the present as it tells the story of this historic river town. With Clinton's proximity to major railways and the largest river in the United States, Clinton was a gateway for both agriculture and the lumber industry. In addition, the museum also hosts an immense collection of local genealogy.

[clintoncountymuseum.org](http://clintoncountymuseum.org)

601 S 1st St  
Clinton  
563-242-1201

**Hours:** Mon-Fri 9-11, Sun 1-4.

**Admission:** Free.



# Sites & Attractions

Sites C - D

## Delaware County Historical Museum



**T**his nine-building complex, formerly Lenox College, is listed on the National Register of Historic Places. It includes numerous exhibits, Civil War monument, farm-machinery halls, one-room school, restored train depot/caboose, restored Reformed Presbyterian Church and microfilm roster of Iowa Civil War soldiers.

[delcoiowahistory.org](http://delcoiowahistory.org)

College Square on Hwy 38  
Hopkinton  
563-926-2639

**Hours:** June-Sept, Tues-Sun 1-4.

**Admission:** \$5.

## Dows Historic District



**V**isitors can experience the early years of Dows, Iowa through historic buildings, constructed between 1885 and 1899. The district includes: Depot Museum and Welcome Center, Quasdorf Blacksmith Museum, Dows Mercantile, Vernon Township No. 5 School and Evans Little Prairie House.

Railroad & Ellsworth Streets  
Dows  
515-852-3595

**Hours:** Welcome Center: Daily 1-3. For additional hours, please call ahead or inquire at the Mercantile.

**Admission:** Donations accepted.

## Dubuque Museum of Art



**L**ocated in the heart of downtown, the Dubuque Museum of Art is Iowa's oldest cultural institution and is home to one of the world's great collections of artwork by Iowa artist Grant Wood. DUMA also features significant collections by Edward S. Curtis and Arthur Geisert and regularly hosts premier exhibits, programs, and classes that reflect the art, character and culture of Iowa.

[dbqart.com](http://dbqart.com)

701 Locust St  
Dubuque  
563-577-1851

**Hours:** Tues-Fri, 10-5. Sat & Sun, 1-4.

**Admission:** Adults \$6. \$5 for seniors (65+), \$3 for college students (with ID). Free to members & to children 18 & under.

## Dysart Historical Center



**T**he Dysart Historical Center features a complex of four buildings: A historical museum, a one-room rural schoolhouse, an agricultural museum-interpretive center and a new machine shed museum, along with a memorial rose garden. Experience the displays, narratives, and programs designed to share the inspiring stories of Iowa's rich heritage and culture, A "Growing" Experience.

[dysartiowa.com/arts-culture/museum/](http://dysartiowa.com/arts-culture/museum/)

612 Crisman St  
Dysart  
319-476-4747

**Hours:** May-Sept, Sun 2-4. Anytime by appointment.

**Admission:** Free. Donations accepted.



Eagle City Winery

Eagles Landing  
B&B, Winery  
and Vineyard

F. W. Kent Park

Family Museum



**L**ocated in the heart of the Iowa River Greenbelt, Eagle City Winery produces an assortment of award winning wines. Visitors can tour the vineyard to see the different varieties of grapes, sample free wine daily in the tasting room or buy a bottle to take home at the winery's gift shop.

[eaglecitywinery.com](http://eaglecitywinery.com)

28536 160th St  
Iowa Falls  
641-648-3669

**Hours:** Tues-Sat 10-5, Sun 1-5.  
**Admission:** Free. ♿ ♿ ♿

**L**ocated along the banks of the Mississippi River, Eagles Landing treats guests to a true taste of Iowa. Visitors can purchase products made from grapes grown in the vineyard including jams, jellies, table syrups and the winery's award winning wine.

[EaglesLandingWinery.com](http://EaglesLandingWinery.com)

127 North St & 82 N St  
Marquette  
563-873-2509

**Hours:** Daily 10-5, closed New Years Day, Easter, Thanksgiving and Christmas.  
**Admission:** Free. ♿ ♿ ♿

**T**his 1,052-acre park features a Conservation Education Center with hands-on exhibits that connect visitors with nature. Panels in the open-air Knight Prairie Pavilion interpret the connection of prairies to agriculture. An 86-site campground, shower house, playgrounds, picnic shelters, trails, eight historic bridges, fishing pier, native and re-created prairies, forests, wetlands, 27-acre lake, beach and fishing ponds, make this an outstanding park.

[johnson-county.com/  
conservation](http://johnson-county.com/conservation)

2048 Hwy 6 NW  
Oxford  
319-645-2315 (Park Office)  
or 319-645-1011  
(Conservation Education Center)

**Hours:** Park: Sunrise-10 pm.  
Conservation Education Center:  
Memorial Day-Labor Day Sat &  
Sun 12-4 and by appointment.  
**Admission:** Park: Free.  
Camping: \$20, includes 50 amp  
electrical service, Wi-Fi, shower  
house & dump station. ♿ ♿

**T**he Family Museum is an interactive children's museum with an emphasis on art and science for children eight and younger. In addition to a Town Square, Mississippi River waterplay table, and a host of other hands-on exhibits, this museum offers a farm exhibit which teaches young learners the importance of agriculture, food production, and the connection between farm and table.

[familymuseum.org](http://familymuseum.org)

2900 Learning Campus Dr  
Bettendorf  
563-344-4106

**Hours:** Labor Day thru  
Memorial Day, Mon-Thurs 9-8,  
Fri-Sat 9-5, Sun 12-5; Memorial  
Day thru Labor Day, Sun 12-5,  
Mon 9-8, Tues-Sat 9-5.  
**Admission:** \$7 ages 2-59,  
\$4 1 yr olds & seniors 60+,  
under 1 yr free. \$4 evenings  
after 5 when open. ♿ ♿ ♿



Photo courtesy of Mackenzie Wearda Serbus - Hampton, IA

## Like a Stubborn Calf...

...good branding tugs at you until you notice.

And remember. And develop brand loyalty.

We know because we've been doing it for 32 years.

Twelve of them with Silos & Smokestacks. Moo!

[jwmorton.com](http://jwmorton.com)



**J.W. Morton**  
AND ASSOCIATES

Branding • Advertising • Internet • Media • PR • Social

# Silos & Smokestacks National Heritage Area

## 2016-2017 Visitors Guide

### Farm House B&B/ Engelbrecht Family Winery



**A**t the Farm House B&B, guests can enjoy a stay on a real working farm with animals, an 11-acre vineyard and a winery/shop. Children are welcome! Adults can enjoy free wine tasting daily of estate/fruit wines. Winery/vineyard tours are available with advanced notice. Guests love watching baby calves and their mamas, gathering the eggs, fishing in the farm pond, walking, running, biking or picnicking on the six mile nature trail adjacent to the B&B. Guests are served a real Farmer's Breakfast made with local products.

[thefarmhousebb.com](http://thefarmhousebb.com)

2866 270th St, Hwy 18 E  
Fredericksburg  
563-237-5969

**Hours:** Winery/Shop: Apr-Dec, daily 10-5, Sun 1-5.

B&B: check-in 2 pm & after, check-out at noon.

**Admission:** Farm & Vineyard: Free self-guided tours, please check in at the winery shop. Bed & Breakfast: \$70-\$150/night. ♿️

### Fayette County Historical Center



**F**ayette County Historical Museum is housed in a 1903 three-level brick building with an elevator, and serves as an interpretive center staffed by volunteers. Agricultural exhibits are located on the lower level with general museum upstairs. Research and public meeting rooms are at ground level.

[fayettecountyiowa.org/  
HistoricalCenter](http://fayettecountyiowa.org/HistoricalCenter)

100 N Walnut St  
West Union  
563-422-5797

**Hours:** Mon-Fri 10-3.

**Admission:** Free. ♿️

### Floyd County Historical Society Museum



**T**he tractor industry started in Charles City when, in the winter of 1901, Charles Hart and Charles Parr built the first factory for tractor production. The museum tells that story, along with all facets of early pioneer life in their home, school, church and businesses.

[floydcountymuseum.org](http://floydcountymuseum.org)

500 Gilbert St  
Charles City  
641-228-1099

**Hours:** Year-round, Mon-Fri 9-4:30. June-Aug, Sat & Sun 1-4.

**Admission:** \$5 adults, \$3 children (6-12 yrs), under 5 yrs free. ♿️

### Fontana Interpretive Nature Center



**D**iscover the links between agriculture and environment. A full service visitor center with displays that demonstrate how people "make their home in a living environment." Programs are available upon request.

[buchanancountyparks.com](http://buchanancountyparks.com)

1883 125th St  
Hazleton  
319-636-2617

**Hours:** Mon-Tues 8-12, Wed-Fri 8-4:30, Sat & Sun 1-5. Winter hours: Mon-Tues 8-12, Wed-Fri 8-4:30, Sat-Sun 1-4.

**Admission:** Free. ♿️



# Sites & Attractions

Sites F

## Fort Atkinson State Preserve



**A**n 1840s federal military post, built to maintain order among various Indian tribes displaced by European-American settlers and to prevent settlers from trespassing on Indian land.

[exploreiowaparks.com](http://exploreiowaparks.com)

Fort Atkinson State Preserve  
Fort Atkinson  
563-425-4161

**Hours:** Open daily, 24 hours.

**Admission:** Free. ♿

## Fossil & Prairie Park Preserve & Center



**W**hile searching to collect a Devonian fossil, wander through native prairie which made Iowa an agricultural leader. View the beehive kilns of the Rockford Brick & Tile Company and learn how they helped expand agriculture.

[fossilcenter.com](http://fossilcenter.com)

1227 215th St  
Rockford  
641-756-3490

**Hours:** Memorial Day thru Labor Day daily, 1-4. May, Sept, Oct, Sat-Sun 1-4. Also by appointment.

**Admission:** Free. Fees for group tours. ♿ ♿

## Four Mounds Inn & Conference Center



**T**he Four Mounds Estate, a National Register Historic District and a City of Dubuque Landmark Site, is a remarkably intact 1908 gentleman's farm along the Mississippi River bluff line. The site features the farm and grounds, river view hiking trails, three options for bed and breakfast, a small conference center, challenge ropes course and more. Includes whole house rentals and is the perfect site for an intimate wedding.

[fourmounds.org](http://fourmounds.org)

4900 Peru Rd  
Dubuque  
563-556-1908

**Hours:** Sunrise-Sunset. Tours of the Historic Buildings as available.

**Admission:** Grounds: Free. Bed & Breakfast: \$95-\$155/night. Cabin: \$175/night. ♿ ♿

## Franklin County Fair & Grandpa's Farm



**A** country fair featuring a large museum, Pleasant Hill (1900s town), and Grandpa's Farm, which has old-time farming demonstrations, including threshing and plowing with draft horses and steam engines.

[franklincountyfair.com](http://franklincountyfair.com)

1008 Central Ave W  
Hampton  
641-456-2049

**Hours:** July 13-17, 2016. Check website above for 2017 dates.

**Admission:** Free gate, free parking, free shuttles. ♿ ♿



### Fun Facts:

One bushel of corn will sweeten more than 400 cans of pop.

[campsilos.org](http://campsilos.org)

# Silos & Smokestacks National Heritage Area

## 2016-2017 Visitors Guide

### Franklin County Historical Society Museum



**T**he Franklin County Historical Society Museum has exhibits featuring local author and cartoonist, Bob Artley's experience growing up on a farm; the story of Hampton native, Fleet Admiral William Leahy, Joint Chief of Staff to President Franklin Roosevelt, including an 11 foot replica ship, the USS Leahy. Across the highway is a typical 1900 home and dairy farm museum, which celebrates Fall Festival the first Sunday in October.

[fchsmuseum.org](http://fchsmuseum.org)

1008 Central Ave W  
Hampton  
641-456-5777

**Hours:** Jan 15-Nov 15, Mon-Fri 1-4, or by appointment

**Admission:** Free. ♣♣♣

### Franklin County REA Power Plant Museum



**T**he Franklin County REA Power Plant Museum depicts "before and after" eras of electricity in rural areas. The Plant was the first to receive a generation and transmission loan from the Rural Electrification Administration and the first plant west of the Mississippi River to generate electricity for rural areas. The Plant became operational in 1938, providing electricity until 1950 and stand-by service into the 1970s.

[fchsmuseum.org](http://fchsmuseum.org)

1450 110th St  
Hampton  
641-456-5777

**Hours:** By appointment only.

**Admission:** Free. ♣♣♣

### Froelich 1890 Village Museum & First Tractor Invented



**F**roelich's 1890 Village: home to John Froelich's 1892 invention of the first gasoline tractor to propel itself forward and backward. Far reaching in its effect on modern agriculture throughout the world. This invention is forerunner of John Deere. Tour highlights: Froelich Tractor Replica, 1891 General Store, Post Office, 1866 One-Room School, Blacksmith Shop, Railroad Depot, Warehouse, Vintage Barn and Semi Building.

[froelichtractor.com](http://froelichtractor.com)

24397 Froelich Rd  
McGregor  
563-536-2841

**Hours:** May 10-Sep 28 & first 2 weekends in Oct, Mon-Tues and Thurs-Sat 10-5, Sun 11-5.

**Admission:** \$5 adults, \$1 children ages 6-12. Large groups please call to schedule.

♣♣♣

### George Maier Rural Heritage Center of Clayton County



**A** historic treasure appropriately situated in a 1919 restored sales barn, the George Maier Rural Heritage Center's vast collection of artifacts takes you on a journey showing how rural life evolved in the Midwest since the mid-1800s.

[elkader-iowa.com](http://elkader-iowa.com)

Elkader City Park  
1000 Mascara Rd  
Elkader  
563-245-2377

**Hours:** Mid Apr-Mid Oct, Sat-Sun 8-5 or by appointment.

**Admission:** \$3 adults, children under 12 yrs free. ♣



## Gilbertson Conservation Education Area



**A** 565-acre Recreation and Education Area includes: Gilbertson Nature Center; Mavis Conner Dummermuth Historical Building; Hart Dummermuth Historical House; petting zoo; maize maze. This area has: canoe access to the Turkey River; fishing in a pond or Turkey River; a paved quarter mile wheelchair accessible trail; playground; shelter houses; modern, primitive, and equestrian camping areas; and over five miles of trails.

[elginiowa.org/  
GILBERTSON.html](http://elginiowa.org/GILBERTSON.html)

22580 A Ave  
Elgin  
563-426-5740

**Hours:** Nature Center, Historical Buildings and Petting Zoo: Memorial Day weekend thru Labor Day, Wed-Sun 11-7 including Memorial Day, Fourth of July, Labor Day or by appointment. Petting Zoo also during May by appointment.

**Admission:** Free. ♿

## Grout Museum District



**T**he Grout Museum District offers four distinct museums to discover our past, present and future. Reach for the stars in the only public planetarium in Northeast Iowa. Experience Victorian elegance in Iowa's finest example of Italianate architecture. Step inside the stories of Iowa Veterans. Pet a 12-foot python or watch a science demonstration to satisfy your curiosity about science.

[groutmuseumdistrict.org](http://groutmuseumdistrict.org)

Grout Museum of History and Science/Sullivan Brothers Iowa Veterans Museum, 503 South St;  
Bluedorn Science Imaginarium, 322 Washington St;  
Rensselaer Russell House Museum, 520 W 3rd St  
Waterloo  
319-234-6357

**Hours:** Tues-Sat 9-5. Please call for current Rensselaer Russell House Museum Hours.

**Admission:** Grout Museum/Iowa Veterans Museum: \$10 adults, \$5 children 14 yrs & under; Rensselaer Russell House Museum: \$5; Bluedorn Science Museum: \$5; Explorer Passes: Two sites: \$13 adults, \$8 children. Veterans half-off at all sites. ♿

**SEE IT.**

[www.GroutMuseumDistrict.org](http://www.GroutMuseumDistrict.org)

Paid for, in part, by the Waterloo Hotel/Motel Tax & Black Hawk County Gaming Association

**MATCHSTICK MARVELS**

319 2nd Street • Gladbrook, IA 50635  
Open 7 days a week from 1 - 5 pm  
April 1 thru November 30  
[www.matchstickmarvels.com](http://www.matchstickmarvels.com)

**THE IOWA WINE TRAIL**

UPPER MISSISSIPPI VALLEY WINE REGION

*A Tasteful Destination*

Join us for our two BIG events!  
April 23-24 November 5-6  
[www.IowaWineTrail.com](http://www.IowaWineTrail.com)

Grundy County  
Heritage Museum



**E**xplore the changes in agriculture through the life of American Indians and pioneers on the prairie. Also discover the 1931 National Corn Husking Contest held in Grundy County.

[grundycounty.org](http://grundycounty.org)

204 4th St  
Morrison  
319-345-2688

**Hours:** Tues-Thurs 8:30-4 or by appointment.

**Admission:** Free. ♿ ♿

Hansen's Farm  
Fresh Dairy



**E**xperience a working dairy farm. Walk-through tours show how milk gets from the cow to your table. Take a trolley ride around the farm, then see the cows, calves, milking parlor, creamery, kangaroos and goats, plus enjoy our dairy products. Hands-on tours include above features plus feeding a calf, making butter, milking a cow and petting the kangaroos and goats.

[hansendairy.com](http://hansendairy.com)

8461 Lincoln Rd  
Hudson  
319-939-2187

**Hours:** Mar-Nov, by appointment only.

**Admission:** Hands-on tour: \$12, 3 yrs & under free. Walk-thru tour: \$8, 3 yrs & under free. School groups: \$5 per child, teachers/chaperones free. Bus tours: \$7 per person, guides/drivers free. ♿ ♿

Hardin County  
Farm Museum



**A** farm site depicting the diversified family farm from the time of the settlement (late 1800s) through 1950.

[eldoraiowa.com](http://eldoraiowa.com)

203 Washington St  
Eldora  
641-939-7107

**Hours:** During scheduled events or by appointment.

**Admission:** Free. Donations welcome. ♿ ♿

Hartman Reserve  
Nature Center



**T**his over 300-acre wooded isle boasts the Hartman Interpretive Center and six miles of trails leading to lakes, prairies, forest, the Cedar River and the American Discovery Trail.

[hartmanreserve.org](http://hartmanreserve.org)

657 Reserve Dr  
Cedar Falls  
319-277-2187

**Hours:** Trails: Daily, Sunrise-Sunset. Interpretive Center: Mon-Fri 8-4:30, Sun 1-5.

**Admission:** Free. ♿ ♿

**Fun Facts:**  
Iowa leads the nation in the percentage of land used for agriculture.  
[campsilos.org](http://campsilos.org)

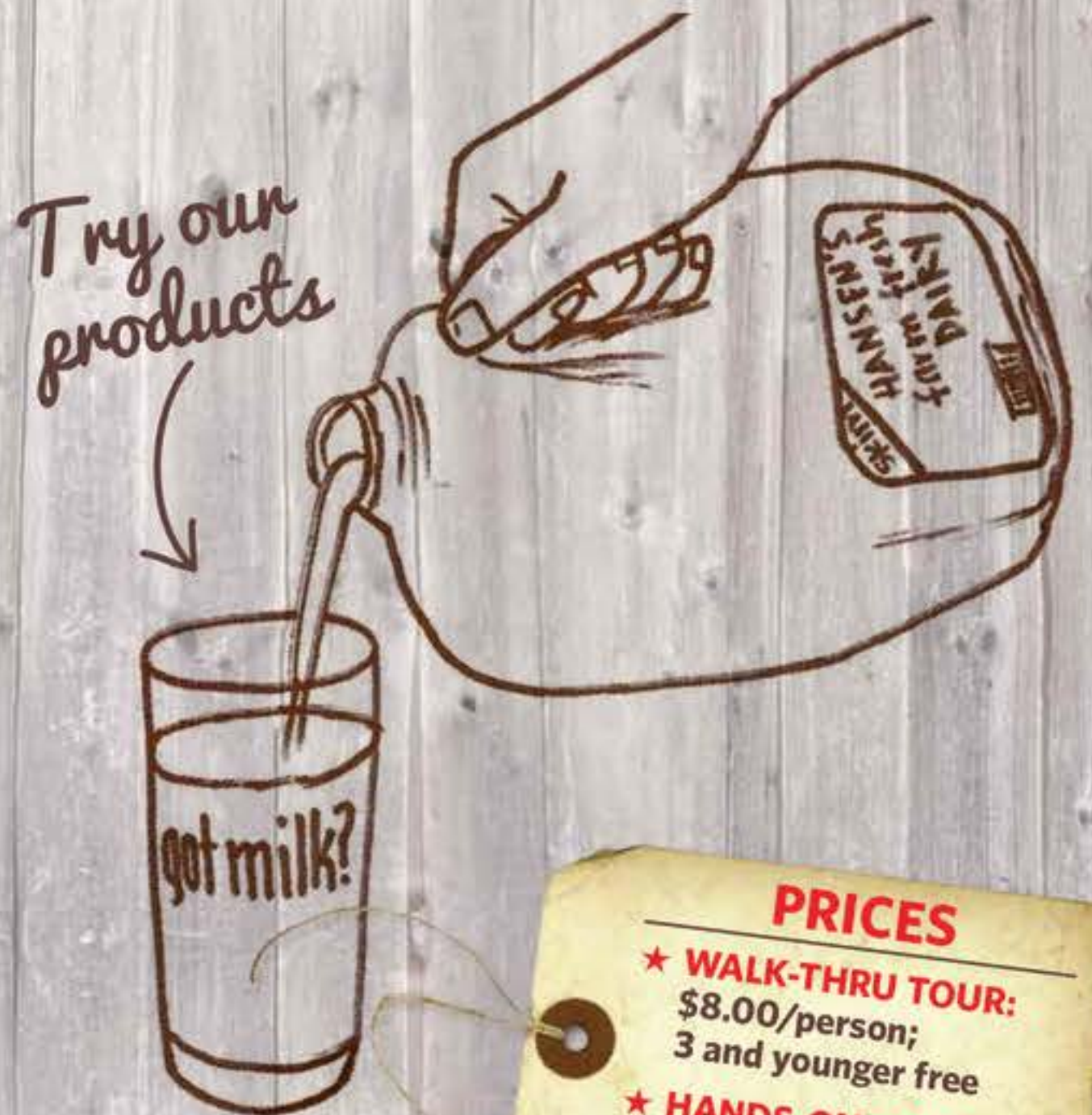




# Tour a working dairy farm!



Milk a cow by hand



**PRICES**

- ★ **WALK-THRU TOUR:**  
\$8.00/person;  
3 and younger free
- ★ **HANDS-ON TOUR:**  
\$12.00/person;  
3 and younger free



Ride the trolley



Feed a calf



Pet a kangaroo



Make butter

**MARCH-NOVEMBER, MONDAY-SATURDAY BY APPOINTMENT ★ CASH OR CHECK ONLY**

8461 Lincoln Road, Hudson, IA ★ (319) 939-2187 ★ [jeannehansen@hansendairy.com](mailto:jeannehansen@hansendairy.com) ★ [www.hansendairy.com](http://www.hansendairy.com)

# Silos & Smokestacks National Heritage Area

## 2016-2017 Visitors Guide

### Hawkeye Buffalo Ranch



**J**oin our family on a wagon tour into the woods to hand feed the buffalo. Our tours include history and facts about bison, as well as the history of our farm which has been in operation for over 150 years. Reservations strongly recommended, we are a working ranch.

[hawkeyebuffalo.com](http://hawkeyebuffalo.com)

3034 Pembroke Ave  
Fredericksburg  
563-237-5318

**Hours:** Sunrise-Sunset.  
**Admission:** \$10 adults, \$8 seniors, \$5 children. ♣♣♣

### Hawkeye Community College Farm Laboratory



**P**rovides student laboratory activities and cooperative work experiences in farm production and management techniques. Includes 250 acres for crop and livestock production and modern facilities for cattle, sheep, swine. Along with the Fennemann Center which houses the office, a classroom and a livestock pavilion.

[hawkeyecollege.edu](http://hawkeyecollege.edu)

5503 Hammond Ave  
Waterloo  
319-296-4251

**Hours:** By appointment only.  
**Admission:** Free. ♣♣♣

### Heartland Acres Agribition Center



**H**earthland Acres Agribition Center is located off Highway 20, Exit 252, in Independence, Iowa. Dedicated to exhibiting the past, present and future of agriculture in the National Heritage Area, Heartland Acres has something fun and educational for people of all ages. Heartland Acres has seasonal livestock, new and antique farm equipment, classic car museum, events center and a one-room schoolhouse.

[heartlandacresusa.com](http://heartlandacresusa.com)

2600 Swan Lake Blvd  
Independence  
319-332-0123

**Hours:** Apr 1-Oct 31, Mon-Sat 9-4:30, Sun 12-4:30. Nov 1-Mar 31, Mon-Fri 9-4:30.

**Admission:** \$10 adults (\$2 discount for groups of 10 or more), \$4 children age 5-17, children 4 yrs & under free, \$3 school tours. ♣♣♣

### Heartland Museum



**H**earthland Museum presents Iowa's agriculture and rural life through farm machinery, toys, and displays in downtown streetscapes representing the Victorian, 1930s and 1950s eras. Large meeting room available.

[heartlandmuseum.org](http://heartlandmuseum.org)

119 9th St SW  
Clarion  
515-602-6000  
or 515-532-2901

**Hours:** Memorial Day thru Labor Day, Mon-Sat 1-4. Year-round by appointment.  
**Admission:** \$12 adults, \$6 children 11 yrs & under. Season Passes available.  
Group Rates. ♣♣♣



## Herbert Hoover Presidential Museum



**L**earn about Iowa's only President at the Herbert Hoover Museum. Hoover campaigned on the platform to restore prosperity to American farmers. His first action as president was to call a special session of Congress to pass the Agricultural Marketing Act of 1929. The Museum is one of the 13 such institutions operated by the National Archives and Records Administration.

[hoover.archives.gov](http://hoover.archives.gov)

210 Parkside Dr  
West Branch  
319-643-5301

**Hours:** Daily 9-5, closed Thanksgiving, Christmas, & New Year's Day.

**Admission:** \$10 Adults, \$5 for 62 & over, retired/active military, & college students, \$3 for 6-15 yrs, free for 5 & under.

## Historic Limestone Insane Asylum



**T**he Jackson County Insane Asylum, once known as the County Poor Farm, is listed on the National Register of Historic Places and also has an Iowa Great Places Designation. The Insane Asylum is located north of Andrew on 250th Ave. Adjacent to the Insane Asylum are five acres of crop ground farmed by the Horse and Harness Association.

[jacksoncountyiowa.com](http://jacksoncountyiowa.com)

250th Ave (County Hwy 61)  
Andrew  
563-652-3181

**Hours:** Daily 9-5. Guided tours available by appointment.

**Admission:** Free.



**YOU'RE PROUD OF IOWA'S HERITAGE.**

**WE'RE PROUD TO BRING IT TO LIFE.**



**What's your point of pride?**

Get in touch for an exhibit that inspires it in others.



DESIGN | DIGITAL | EXHIBITS

563.556.2392 | Dubuque, Iowa  
[MCDisplays.com](http://MCDisplays.com)

Hurstville  
Interpretive  
Center



**E**xplore the links between Iowa's prairies, wetlands, the rocks beneath your feet and agriculture. A pollinator garden and a working beehive allow visitors to see pollinators at work. Exhibits help visitors understand how Iowa's early communities, such as Hurtsville, developed around the resources that were available and were a focal point for farm families.

[jacksonccb.com](http://jacksonccb.com)

18679 63rd St  
Maquoketa  
563-652-3783

**Hours:** Year-round, Mon- Fri 9-4. Weekends Apr- Oct, 12-5. Weekends Nov-Dec, 12-4.  
**Admission:** Free. ♿ ♻️

Hurstville  
Lime Kilns



**B**uilt in the 1870s, the four kilns heated limestone rock mined from nearby quarries. The process formed lime mortar used in the construction of homes, farm buildings and public buildings throughout the Midwest.

[jacksonccb.com](http://jacksonccb.com)

Intersection of Hwy 61 and  
Hurstville Rd  
Maquoketa  
563-652-3783

**Hours:** Year-round, tours available upon request.  
**Admission:** Free. ♿

Indian Creek  
Nature Center



**A** renovated 1932 dairy barn houses the visitor center, where maple syruping, beekeeping, prairie restoration, and other programs are used to interpret the natural environment and our cultural and agricultural heritage. The Nature Center has several miles of trails that wind through prairies, oak/hickory savannas and a wetland.

[indiancreeknaturecenter.org](http://indiancreeknaturecenter.org)

6665 Otis Rd SE  
Cedar Rapids  
319-362-0664

**Hours:** Center: Mon-Fri 9-4, Sat 11-4. Trails: Sunrise-Sunset.  
**Admission:** Free. ♿ ♻️

Ion Exchange, Inc.

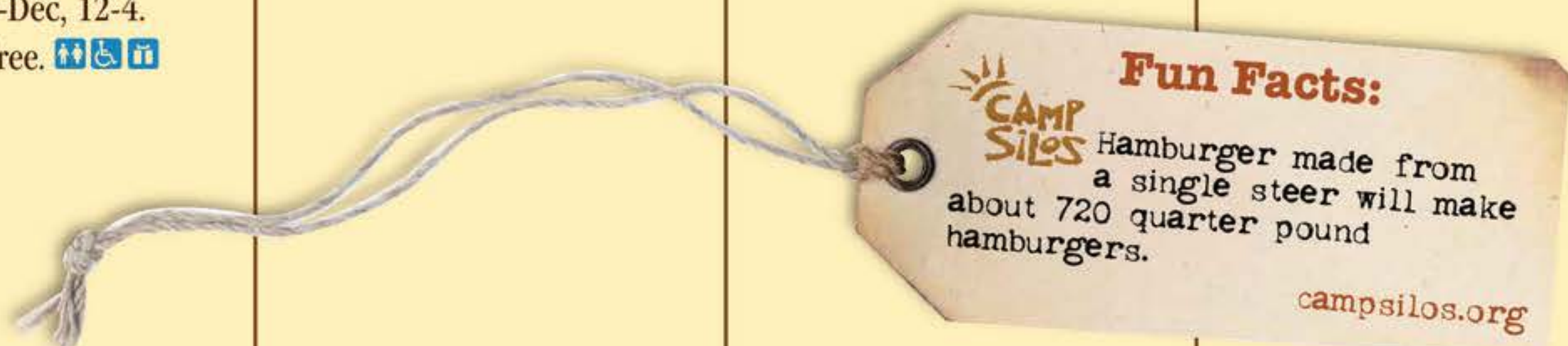


**I**on Exchange nursery specializes in the production, harvesting, cleaning and marketing of wildflowers, grass seeds and plants native to Iowa and the Midwest.

[ionxchange.com](http://ionxchange.com)

1878 Old Mission Dr  
Harpers Ferry  
563-535-7231

**Hours:** Tours by appointment.  
**Admission:** \$10 adults, children under 10 yrs free.



**Fun Facts:**  
Hamburger made from a single steer will make about 720 quarter pound hamburgers.

[campsilos.org](http://campsilos.org)



## SHOW THEM *we* CARE.

Consumers rely on us to produce quality pork in a responsible manner, so it's important they know the principles that guide pork producers – like our commitment to public health. Everyone involved in pork production – from farm owners to animal caretakers – has an obligation to use management practices that are consistent with producing safe food.

Let's show the world how much we care. Visit [www.pork.org](http://www.pork.org) to learn more about best practices to ensure the pork you produce is safe for everyone.



[www.iowapork.org](http://www.iowapork.org)

# Silos & Smokestacks National Heritage Area

## 2016-2017 Visitors Guide

### Iowa Gold Star Military Museum



**I**owa's premier military museum, honoring Iowa Veterans of all services, plus the Iowa State Patrol. Indoor and outdoor exhibits include equipment, uniforms, 150+ weapons, flags, trench art, vintage military vehicles and aircraft. The library includes soldier records and over 5,000 military reference books for genealogical research.

[iowanationalguard.com/  
History/Museum/Pages/  
home.aspx](http://iowanationalguard.com/History/Museum/Pages/home.aspx)

7105 NW 70th Ave, Camp Dodge  
Johnston  
515-252-4531

**Hours:** Mon-Fri 8:30-4:30,  
Sat 10-4.

**Admission:** Free. ♿ ♿ ♿

### Iowa Masonic Library & Museum



**T**he Iowa Masonic Library is recognized as the oldest special library in Iowa. Included in its collection are reports, transactions and papers of the Iowa Department of Agriculture, Horticultural Society and year-books of agriculture. The Library also maintains early records of the State Agricultural College, now Iowa State University.

[gl-iowa.org](http://gl-iowa.org)

813 1st Ave SE  
Cedar Rapids  
319-365-1438

**Hours:** Mon-Fri 8-12 & 1-5.

**Admission:** Free. ♿ ♿ ♿

### Iowa River Gazebo



**P**ast, present and future meet at the Iowa River Gazebo located on the Iowa River in Coralville. The 14 interpretive panels and eight plaques celebrate the people, early history and events that have influenced the area and development of Coralville. The gazebo exhibit is a trail system focal point and an entrance and exit to the pedestrian bridge spanning the Iowa River Dam.

[johnsoncountyhistory.org](http://johnsoncountyhistory.org)

1st Ave & 5th St  
at Iowa River Dam  
Coralville  
319-351-5738

**Hours:** Outdoor exhibit.  
Open year-round.

**Admission:** Free. ♿

### Iowa River Greenbelt Scenic Drive



**T**he Iowa River Greenbelt Scenic Drive winds through a picturesque landscape of valleys, woods and streams tucked in the midst of flat, fertile farmland. Extending from Alden to Eldora, this designated scenic drive takes visitors along the Hardin County segment of the Iowa River and through a number of small farming communities. Call for detailed map.

[hardincountyconservation.com](http://hardincountyconservation.com)

See map at the back  
of this guidebook.  
Ackley  
641-648-4361

**Hours:** Open 24 hours.

**Admission:** Free.



# Sites & Attractions

Sites I - J

## Iowa State Fair



**N**othing compares to the annual August extravaganza that inspired the novel *State Fair* and is featured in the New York Times best-seller *1000 Places to See Before You Die*. The Iowa State Fair features mouth-watering food, fabulous free entertainment, one of the world's largest livestock shows and countless zany contests. Join us August 11-21, 2016 and August 10-20, 2017.

[iowastatefair.org](http://iowastatefair.org)

E 30th and E University Ave  
Des Moines  
800-545-FAIR

**Hours:** Iowa State Fair:  
Aug 11-21, 2016 and  
Aug 10-20, 2017.  
Fairgrounds: Open year-round.  
**Admission:** \$10 adults, \$4  
children 6-11 yrs, children 5 yrs  
& under free. Advance tickets:  
\$7 adults, \$3 children 6-11 yrs  
when purchased before Aug 7.



## Iowa's Dairy Center



**I**owa's Dairy Center is not only a working farm, but a tourism facility where you can learn about modern dairy farming. On your tour you will see the milking parlor, NEW robotic milking facility, freestall barn for housing the milk cows, special needs barn for calving, calf barn and Iowa's Dairy Museum. Visit today!

[iowadairycenter.com](http://iowadairycenter.com)

1527 Hwy 150 S  
Calmar  
563-534-9957

**Hours:** Mon-Fri 8-4, or by  
appointment for a guided tour.  
Viewing platform for the milking  
parlor and robotic milking  
facility is open 24 hours a day.  
**Admission:** Guided tours: \$5  
adults, \$3 children. Groups  
seeking guided tours should  
call ahead.

## Jackson County Historical Museum



**T**he county museum includes 22,000 sq. ft. of local exhibits including period rooms, a country school, boot maker shop, general store, an authentic replica of a McCormick Reaper and a wildlife display. There is a large machine shed with a fine collection of vintage agricultural equipment, as well as a 1850s log cabin.

[jciahs.com](http://jciahs.com)

1212 E Quarry St  
Maquoketa  
563-652-5020

**Hours:** Tues-Fri 10-4,  
Sat & Sun 12-4; closed major  
holidays.  
**Admission:** \$3 for one  
museum, \$5 for both. Members  
and children 10 yrs & under are  
free.

## Jasper County Historical Museum



**F**eatured areas include our 1875 Barn, Engine House, and Ag Building that houses a variety of early equipment, much of it made locally. The Ag Building also includes our "Wonderful Tales" exhibit that tells the story of wind power in the county. Other features include Maytag exhibit, new Washing Machine Center of the World exhibit and Victorian and 1930s rooms.

[jaspercounnymuseum.com](http://jaspercounnymuseum.com)

1700 S 15th Ave W  
Newton  
641-792-9118

**Hours:** May-Sept 30, daily 1:00,  
last tour at 4:00, Oct-May 1,  
Groups of 6 or more by  
appointment.  
**Admission:** \$5 adults, \$2  
children, admission also  
includes free re-entry pass to  
allow an additional day to  
complete the full tour.

# Silos & Smokestacks National Heritage Area

## 2016-2017 Visitors Guide

### Jenison Meacham Memorial Art Museum & Farm



**T**his site is comprised of an art center/museum, prairie farmstead, rural schoolhouse, working farm and machinery museum featuring educational programs and demonstrations. Prairie Homestead Show: Third full weekend in August, Fri-Sun.

[belmondartscenter.org](http://belmondartscenter.org)

1179 Taylor Ave  
Belmond  
641-444-4635

**Hours:** May-Oct, Sun 1:30-4:30 or by appointment. Prairie Homestead Show: Third full weekend in August, Fri-Sun.

**Admission:** Free. Donations welcome. ♿

### John Deere Tractor Cab & Assembly Operations



**S**ee John Deere tractors being made from start to finish on this one-of-a-kind tour. John Deere has long been known as the world's leading manufacturer of agricultural tractors. John Deere is the sole tractor manufacturing plant left in the world that retains its founder's name.

[johndeere.com](http://johndeere.com)

3500 E Donald St  
Waterloo  
319-292-7668

**Hours:** Year-round, Mon-Fri, subject to availability pending manufacturing. Tour reservations required. Must be 13 yrs or older to tour. Wear comfortable walking shoes; no open-toe shoes are allowed. No cameras or cell phone videos allowed.

**Admission:** Free. ♿

### Johnson County Historical Society Museum



**T**he JCHS Museum's permanent and temporary exhibits and interactive displays show how the land, people, transportation and businesses, including agriculture, evolved to create today's Johnson County community. The museum's newest permanent exhibit "A Home on the Farm" explores the changes in the lives of Johnson County farm families from 1930-1990.

[johnsoncountyhistory.org](http://johnsoncountyhistory.org)

860 Quarry Rd  
Coralville  
319-351-5738

**Hours:** Tues-Sat 10-5, Sun 12-5.

**Admission:** \$5 adults. Members & children 12 & under free. ♿

### Kinney Pioneer Museum



**K**inney Pioneer Museum is a historical museum that preserves and displays the pioneer way of life in rural North Central Iowa. The museum includes exhibits and displays on early agricultural artifacts, amenities and social practices of the past, as well as their relationship to the growth of industry, education and the cities and towns of the area.

9184 265th St  
(Hwy 122 W at entrance to  
Mason City Airport)  
Clear Lake  
641-423-1258

**Hours:** May-Sept, Tues-Sun 1-5.

**Admission:** \$3 adults, \$1 children (school tours \$.75 per child). ♿

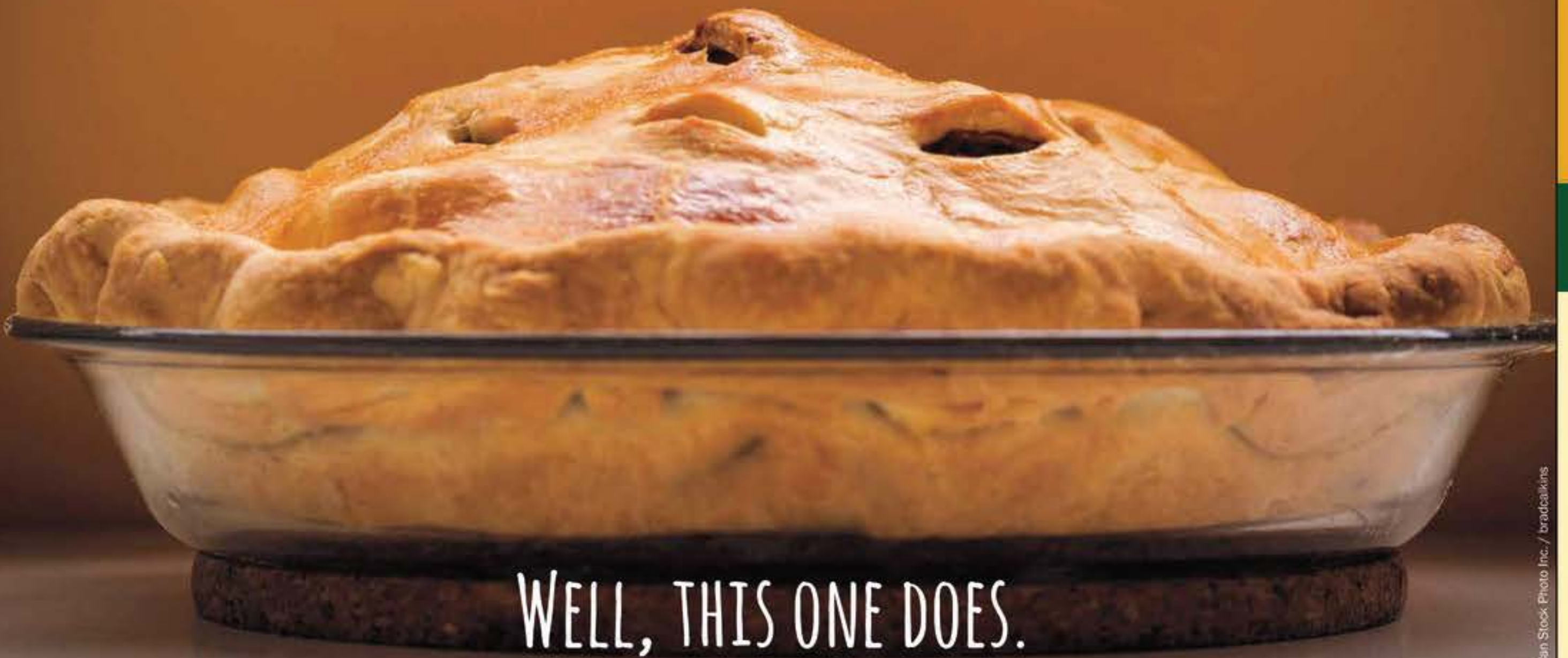


**CAMP SILOS** **Fun Facts:**  
Did you know that farmers and ranchers only receive 15.8 cents of every dollar spent on food?

[campsilos.org](http://campsilos.org)



WHEN WAS THE LAST TIME YOU VISITED A WELCOME CENTER  
THAT SMELLED LIKE YOUR GRANDMA'S KITCHEN?



WELL, THIS ONE DOES.

© Can Stock Photo Inc. / bradcalkins

**S**top here for rest, relaxation, fresh-baked pie, muffins or  
cookies and coffee made from freshly-ground beans!!!

Shop for Iowa-made products and folk art in the Barn Boutique  
Gift Shop. Let our trained travel counselors help you find many  
fun and interesting things to do during your visit to Iowa!

Open 9-5 daily year-round • Accessible to Persons with Disabilities  
• Internet Access • Motorcoach Parking



*Top of Iowa Welcome Center  
& Barn Boutique*

topofiowa.com • 641.324.3184 • I-35, Exit 214—Northwood,  
4705 Wheelerwood Road, Northwood, IA



# Silos & Smokestacks National Heritage Area

## 2016-2017 Visitors Guide

### Kinze Innovation Center



### La Porte City FFA Historical & Ag Museum



### Laura Ingalls Wilder Park & Museum



### Living History Farms



**E**xperience over 50 years of inspiration, imagination and hard work by one man and generations of dedicated hard-working people (Kinze employees, partners, family and friends). Through hands-on, interactive displays, The Kinze Innovation Center showcases the many agricultural innovations from Kinze's rich heritage and highlights the technology that is shaping farming today and into the future.

[www.kinze.com/kic](http://www.kinze.com/kic)

2172 M Ave  
I-80 – Exit 216  
Williamsburg  
319-668-1300

**Hours:** Mon-Fri 9-5  
**Admission:** Free

**O**ur museum has over 8,000 square feet of innovative and educational exhibits that celebrate the history, art and culture of our community, state and nation. New in 2016 is our Rural Iowa Heritage Center (featuring a restored 1861 log cabin) that is dedicated to our pioneer heritage. It documents the role of agriculture and rural America in building our nation.

[lpcmuseum.com](http://lpcmuseum.com)

408 Main St  
La Porte City  
319-342-3619

**Hours:** Apr 12-Aug; Tues, Wed, Thurs, 10-4, or by appointment; Sept-Nov 17; Tues, Thurs 10-4 or by appointment.  
**Admission:** \$3 per person, family membership/season pass \$25.

**T**our the only childhood home of "Little House" author Laura Ingalls Wilder that still remains on it's original site. Learn the fascinating story of America's agricultural frontier through the Ingalls family stories of hardship and joy. See where this family lived when they left the farm and came to the town of Burr Oak in 1976 with nine-year-old, Laura.

[lauraingallswilder.us](http://lauraingallswilder.us)

3603 236th Ave  
Burr Oak  
563-735-5916

**Hours:** May, Mon-Sat 10-4, Sun 12-4. Memorial Day thru Labor Day, Mon-Sat 9-5, Sun 12-4. Post Labor Day thru mid-Oct, Thurs-Sat 10-4.  
**Admission:** \$8 adults, \$6 children 6-17 yrs, 5 yrs & under free. Family tour \$30.

**A** 500-acre open-air museum. Travel at your own pace through 300 years of agricultural history, including a 1700 Ioway Farm, 1850 Pioneer Farm, 1900 Farm and 1875 Town. On-site interpreters, activities and demonstrations.

[livinghistoryfarms.org](http://livinghistoryfarms.org)

11121 Hickman Rd  
Urbandale  
515-278-5286

**Hours:** May 1-Aug 28, Mon-Sat 9-4, Sun 12-4. Aug 31-Oct 21, Mon-Sat 9-4, Sun 12-4.  
**Admission:** \$15 Adults, \$9 Children (2-12 yrs), seniors or military \$1 off.

## Mamie Doud Eisenhower Birthplace



**T**our the restored birthplace of First Lady Mamie Doud Eisenhower. Restored Victorian home with summer kitchen, barn and exhibits. Mamie's family was active in Boone's flour milling and meat packing business.

[boonecountyhistory.org](http://boonecountyhistory.org)

709 Carroll St  
Boone  
515-432-1907

**Hours:** June-Oct, Mon-Sat 10-5.  
Also by appointment.  
**Admission:** \$5 adults, children 17 yrs & under free. ♿

## Mathias Ham House Historic Site



**T**his stately villa is a living reflection of its owner, Mathias Ham, one of Dubuque's earliest lead mining entrepreneurs. Living history demonstrators and interpreters share the rich history of Mathias Ham and lead mining in Dubuque. Venture the grounds to explore a one-room schoolhouse, original 1833 log cabin, windlass, miner's "badger hole" and a new lead mine structure.

[rivermuseum.com/  
exhibits-experiences/  
mathias-ham-house/](http://rivermuseum.com/exhibits-experiences/mathias-ham-house/)

2241 Lincoln Ave  
Dubuque  
563-557-9545

**Hours:** Memorial Day weekend thru Labor Day, Wed-Sun 11-4.  
**Admission:** \$5 adults, \$3.50 youth 7-17 yrs, 6 yrs & under free. ♿

## Matthew Edel Blacksmith Shop



**O**nce an establishment in every community, the Matthew Edel Blacksmith Shop preserves the story of the ingenuity and the role the local blacksmith played in rural Iowa. The shop preserves the inventions patented by Edel, including dehorning clippers, wedge cutter, nut pliers and garden hoes.

[iowahistory.org](http://iowahistory.org)

214 1st St  
Haverhill  
641-475-3239  
or 641-752-6664

**Hours:** Memorial Day thru Labor Day, daily 12-4.  
**Admission:** Free. ♿

## Mines of Spain Recreation Area



**T**he Mines of Spain consists of 1,439 acres of forest and prairie along the Mississippi River. The park is a National Historic Landmark and a state preserve. The E. B. Lyons Interpretive Center, a Scenic Byway Center, has displays on the park's historical sites of farming, prairies, lead mining, Native Americans and wildlife. Trails connect visitors to a farm site, forests, prairies, archeological sites and wetlands.

[minesofspain.org](http://minesofspain.org)

8991 Bellevue Hts  
Dubuque  
563-556-0620

**Hours:** Park: 4 am-10:30 pm.  
Interpretive Center: Apr-Oct, Mon-Fri 9-4, Sat & Sun 12-4:30; Nov-Mar, Mon-Fri 9-4, Sat & Sun closed except for programming, call for program schedules.  
**Admission:** Free. ♿



### Fun Facts:

The average American farmer feeds about 155 people worldwide.

[campsilos.org](http://campsilos.org)

# Silos & Smokestacks National Heritage Area

## 2016-2017 Visitors Guide

### Miss Effie's Country Flowers & Garden Stuff



**A**U-pick flower farm in Northwest Scott County, Miss Effie's invites you to relax and enjoy the beautiful Grant Wood countryside. Our gardens are perfect for strolling and picking the newest blossoms. Fresh eggs, homemade jams, hand-sewn aprons will remind you of days gone by. Your grandmother's lifestyle is alive and well at Miss Effie's.

[misseffiesflowers.com](http://misseffiesflowers.com)

27387 130th Ave  
Donahue  
563-282-4338

**Hours:** June 1-Oct 1, Thurs-Fri 9-5, Sat 9-3, Sun 12-3; June 15-Aug 15 open Thurs evenings until 8. Oct-Apr, Fri 10-5.  
**Admission:** Free. 1 gallon bucket of flowers is \$20. ♿ ♿

### Montauk Historic Site



**J**ourney into the past at the home of Iowa's 12th governor, William Larrabee. Enjoy a guided tour where you will see and hear how the Larrabee family furnished and maintained this 1874 mansion and estate for more than 100 years, adapting with the changing agricultural life.

[iowahistory.org](http://iowahistory.org)

26223 Harding Rd, Hwy 18 E  
Clermont  
563-423-7173

**Hours:** Memorial Day thru Labor Day, Daily 12-4; Labor Day thru Oct 31, Fri-Sun 12-4 and by appointment.

**Admission:** Free. ♿ ♿

### Motor Mill Historic Site



**M**otor Mill, built in 1869, preserves the story of flour milling and wheat production in Northeast Iowa. The mill also demonstrates the struggles farmers, businessmen and laborers faced in a remote rural river setting, as well as the challenges faced in the development of a large agri-business.

[motormill.org](http://motormill.org)

23002 Grain Rd  
Elkader  
563-245-1516

**Hours:** Buildings may be viewed year-round. Tours: May-Sept, two weekends a month. Call for tour schedule.

**Admission:** Free. ♿ ♿

### Museums of Story City



**T**he four museum sites in Story City share the unique and rich heritage of an agrarian community settled largely by Scandinavian immigrants. Experience the past by visiting a pioneer schoolhouse used as a polling location for the Lincoln presidential election of 1860. Explore a restored Victorian home and tour exhibits that tell the story of historic rural life.

[storycityhistory.org](http://storycityhistory.org)

619 Grand Ave  
Story City  
515-460-1749

**Hours:** Year-round; Carriage House Museum: Wed-Fri 12-5, Memorial Day-Labor Day, all 4 museums open Sun 1-3.  
**Admission:** By donation. Fee for guided tours. ♿ ♿



## National Cattle Congress



108

**T**he National Cattle Congress (NCC) is committed to benefit the youth of Iowa, to support educational programs and institutions, to expand agricultural horizons and to preserve and honor Iowa agricultural heritages. We provide quality, affordable and entertaining learning experiences to spectators and the general public by conducting our annual fair and events throughout the year.

[nationalcattlecongress.com](http://nationalcattlecongress.com)

257 Ansborough Ave  
Waterloo  
319-234-7515

**Hours:** Mon-Fri 9-4; occasional weekends. Fair: Sept 15-18, 2016. See website above for listing of 2017 Fair dates.

**Admission:** Varies by event.



# Sites & Attractions

Sites N

## National Mississippi River Museum & Aquarium



The highly interactive museum and aquarium includes the Mississippi River Center and the National River Center. Experience dynamic state-of-the-art exhibits, a 3D/4D theatre, animal programs, a National Landmark vessel, and more! The National Mississippi River Museum & Aquarium is a Smithsonian Institution Affiliate and is accredited by the American Association of Museums and the Association of Zoos and Aquariums.

[rivermuseum.com](http://rivermuseum.com)

350 E 3rd St  
Dubuque  
563-557-9545  
or 800-226-3369

**Hours:** Memorial Day thru Labor Day, daily 9-6. Labor Day thru Oct 31, daily 9-5. Nov 1 thru Feb 29, Tues-Sun 10-5. Mar 1 thru Thursday before Memorial Day, daily 10-5. Closed Thanksgiving & Christmas.  
**Admission:** \$10 to \$15, please visit website for more information. ♿ ♿ ♿

## Neal Smith National Wildlife Refuge



Neal Smith National Wildlife Refuge is a tallgrass prairie and oak savanna reconstruction project located about twenty miles east of Des Moines. The Refuge offers scenic views of over 5,000 acres of tallgrass prairie year-round. It is also home to herds of bison and elk, grassland birds, and numerous other wildlife species. The Prairie Learning and Visitor Center offers interactive exhibits, the Prairie Point Bookstore, and showings of our award-winning film, "Return to Wildness". Several paved trails are available to visitors in addition to the auto tour route through the bison and elk enclosure. Free public programs and volunteer opportunities are also available for all ages throughout the year.

[fws.gov/refuge/neal\\_smith/](http://fws.gov/refuge/neal_smith/)

9981 Pacific St  
Prairie City  
515-994-3400

**Hours:** Mon-Sat, 9-4. Sun 12-5. Closed Sundays from Dec 1-Feb 28. Open Memorial Day, Fourth of July, & Labor Day & closed on all other Federal holidays.  
**Admission:** Free. ♿ ♿ ♿

## Norman Borlaug Boyhood Home and Birthplace Farms



Visit the farm sites of the "Father of the Green Revolution," Dr. Norman E. Borlaug. Walk in the footsteps of a young boy learning lessons that would lead to the revolutionary changes he engineered around the world through his innovative approaches in agriculture. Experience Dr. Borlaug's humble beginnings, including his bedroom in an era of time gone by. Learn his inspirational story by guided or self-guided tours of his one-room schoolhouse, farm buildings and fields; and about his scientific and humanitarian work that resulted in saving a billion lives.

[normanborlaug.org](http://normanborlaug.org)

19518 200th St.  
Cresco  
563-547-3434

**Hours:** Apr-Oct, By Appointment.  
**Admission:** Free will donation.



## Northern Iowa River Greenbelt Scenic Drive



Enjoy a scenic drive of 50+ miles following the course of the Iowa River as it winds through Franklin and Wright counties. Oak savannas, rolling hills, glacial moraines and much more await you! Maps available at the Dows Welcome Center.

See map at the back of this guidebook.  
Belmond  
515-571-3264

**Hours:** Open 24 hours.  
**Admission:** Free.

# Silos & Smokestacks National Heritage Area

## 2016-2017 Visitors Guide

### Park Farm Winery



**T**his family farm uses their Iowa grown grapes to produce Iowa wines, both red, white and limited fruit. Park Farm Winery educates the public on varieties of wines and grapes, the establishment of a vineyard in a cold climate, harvesting grapes and much more.

[parkfarmwinery.com](http://parkfarmwinery.com)

15159 Thielen Rd  
Bankston  
563-557-3727

**Hours:** Dec-May, Sun, Mon, Thurs 12-5, Fri-Sat 12-6; June-Nov, Mon-Thurs 12-7, Fri-Sat 11-8, Sun 11-5.

**Admission:** \$3 for wine tasting, includes 5 samples for adults over 21. ♿ ♿ ♿

### Plum Grove Historic Home



**P**lum Grove is the home of Iowa's first territorial governor, Robert Lucas, and his wife Friendly. Once a 360-acre farm, the home is now surrounded by Coralville. The home is furnished to the period of the Lucas occupation from 1844-53. Site includes three period gardens and archaeology exhibits.

[johnsoncountyhistory.org](http://johnsoncountyhistory.org)

1030 Carrol St  
Iowa City  
319-351-5738

**Hours:** Memorial Day thru Labor Day, Wed-Sun 1-5; Labor Day thru Oct 31, Sat & Sun 1-5.

**Admission:** Free. ♿ ♿ ♿

### Prairie Bridges Park



**W**ith 101 acres of wildlife, woodlands and prairie, the park offers opportunities for visitors to enjoy nature at its best. Camping with electrical hookups, fishing in six ponds, three miles of trails for walking, biking or driving, disc golf course, restrooms, showers and shelter house provide a fun family experience. The park offers 24-hour services within city limits, just 1/4 mile from downtown.

[ackleyiowa.net](http://ackleyiowa.net)

310 N Franklin  
Ackley  
641-485-1623

**Hours:** Park: Year-round. Call ahead to reserve campsite.  
**Admission:** Park: Free. RV Camping \$15, Primitive \$8. Monthly/seasonal camping rates available. ♿ ♿ ♿

### Putnam Museum & Giant Screen Theater



**T**he 115,000 sq. ft. museum includes changing and permanent exhibits: Black Earth/Big River; Hall of Mammals; River, Prairie and People; Asian Gallery; Unearthing Ancient Egypt; Ocean Experience; ViewSpace; and Giant Screen Theater.

[putnam.org](http://putnam.org)

1717 W 12th St  
Davenport  
800-435-3701 or  
563-324-1933

**Hours:** Mon-Sat 10-5, Sun 12-5. Show times vary.  
**Admission:** Exhibit halls: \$7 adults, \$6 seniors, \$5 youth 3-12 yrs, 2 yrs & under & museum members free. Giant Screen Theater: Call museum or visit website for ticket prices.

♿ ♿ ♿

# Sites & Attractions

Sites P - S

## Reiman Gardens – Iowa State University



**S**ince 1914, a “garden laboratory” has been an essential teaching tool at Iowa State University. Today, the 17-acre Reiman Gardens incorporates academic and practical concepts with lessons from crop rotation to floriculture, entomology to water resource management. Inspiring future generations as environmental stewards is accomplished with tours, classes, lectures, articles and videos enjoyed by youth, students and 100,000 visitors annually.

[reimangardens.com](http://reimangardens.com)

1407 University Blvd  
Ames  
515-294-2710

**Hours:** Daily 9-4:30; extended hours Memorial Day thru Labor Day.

**Admission:** \$8 adults, \$7 seniors age 65+, \$4 youth 4-17 yrs, children age 3 yrs & under free. Group rates available.



## Richardson- Jakway Historic Site



**T**he Richardson-Jakway Historic Site provides a look back at a 19th century home, farmstead and community. The site features the 1851 Richardson-Jakway House and the now defunct pioneer community of Mudville.

[buchanancountyparks.com](http://buchanancountyparks.com)

2791 136th St  
Aurora  
319-636-2617

**Hours:** House: By request. Outside displays open daily.

**Admission:** Free. ♿

## Riegel Blacksmith Shop



**B**urkard Riegel, “The Faithful Village Blacksmith,” had a solid background for his efficiency in work. A native of Germany, he came to Clermont in 1931 to set up a business that was exclusive in many fields. The shop was recently restored, to preserve this unique building for future generations.

[clermontia.org](http://clermontia.org)

210 Mill St  
Clermont  
563-423-7295

**Hours:** May-Oct 31, Daily 8-8.

**Admission:** Free. ♿

## Scenic City Empress Boat Club



**T**he Empress Boat Club, a 1937 log cabin, is situated on the Iowa River and is home to the Empress Riverboat. Come enjoy our public cruises or book a private event. Soak in the beautiful scenery of the limestone bluffs, while listening to our captain’s monologue. From agriculture to industry you will be entertained by our Iowa River interpretation!

1113 Union St  
Iowa Falls  
800-873-1936 or  
641-648-9517

**Hours:** Jan-Dec, Mon-Fri 9-12; May-Oct, Mon-Fri 9-12, Sat-Sun 1-4.

**Admission:** Public cruise: \$7 adults, \$5 children, 2 yrs & under free. Group cruises & tour prices vary, call for more information. ♿ ♿ ♿





# Silos & Smokestacks National Heritage Area

## 2016-2017 Visitors Guide

### Seed Savers Exchange



**H**eritage Farm, the headquarters of Seed Savers Exchange, is an 890-acre living museum of our garden heritage. Display gardens surrounding the Visitors Center grow hundreds of heirloom fruits and vegetables, while eight miles of hiking trails connect sparkling trout streams, wooded bluffs, heritage poultry, Ancient White Park cattle, and two historic apple orchards.

[seedsavers.org](http://seedsavers.org)

3094 N Winn Rd  
Decorah  
563-382-5990

**Hours:** Mar-Dec, daily 10-5  
**Admission:** Free. Group tours available by appointment only, \$5/person. ♿ ♻️

### Special Collections Department, Iowa State University



**T**he Department helps to identify, select, preserve, create access to, provide reference assistance for, and promote the use of rare and unique research materials that support major research areas of Iowa State University. The Department contains nearly 15,000 linear feet of archival materials documenting agriculture, natural history, statistics, veterinary medicine, and women in science and engineering.

[add.lib.iastate.edu/spcl/index.html](http://add.lib.iastate.edu/spcl/index.html)

403 Parks Library  
Ames  
515-294-6672

**Hours:** Mon-Fri 10-4.  
**Admission:** Free. ♿ ♻️

### State Historical Building



**T**he museum features a variety of permanent and temporary exhibits on Iowa's rich history, including our use of the land. The historical library and state archives provide many sources including newspapers, manuscripts, county records, photographs and government documents useful in researching many aspects of Iowa's agricultural history.

[iowahistory.org](http://iowahistory.org)

600 E Locust St  
Des Moines  
515-281-8741

**Hours:** Museum: Tues-Sat 9-4:30, Sun 12-4:30 (closed on state holidays). Library Reading Room: Tues-Fri 12:30-4:30, Sat 9-4:30 (closed on state holidays).  
**Admission:** Free. ♿ ♻️

### Strawberry Hill Farm & Garden



**B**e a farmer for a day: Learn the history of the farm, play in the Story Time Pine's playground, visit the working dairy goat farm, meet all the animals by helping feed the rabbits, gather eggs, milk the 500+ goats, and give hay to the horse, donkey, or llama. There is always something to do, join us for some fun on the farm!

[strawberryhillstrawberry.com](http://strawberryhillstrawberry.com)

12173 Amission Rd  
Strawberry Point  
563-920-4531

**Hours:** Year-round by appointment.  
**Admission:** Guided Walk-thru Tours: 2 years & older \$8/1 Hour, School/Daycare Guided Tours: \$6/45 min, Working Farm Tour: 2 years & older \$10/2 Hour Tour, Pumpkin Patch Fall Frenzy Tour: 2 years & older \$8. ♿ ♻️



# Sites & Attractions

Sites S - T

## Sugar Grove Vineyards & Gathering Place



In this 1870s rejuvenated Grange Hall, framed by rolling hills, vineyard, pond and elk, visitors may learn the history of the Grange Movement and social significance of the local club. Iowa wine and beer are featured along with public summer concert series, fall dinner show and private events.

6602 Ginger Ave  
Newton  
641-831-3843

**Hours:** Apr-Dec by appointment and during public events.

**Admission:** Free ♿

## Tabor Home Vineyards and Winery



Tabor Home Winery, Iowa's oldest estate winery is located on our family's 1860s Jackson County farmstead. Tabor Home is renowned for distinguished wines that are defining the federally-established Upper Mississippi River Valley viticulture area. Wine festivals, Sunday music in the vineyards with Iowa singer-songwriters, demonstration vineyards and winemaker tours offer unique experiences and inform visitors about Iowa's exciting wine industry.

[TaborHomeWinery.com](http://TaborHomeWinery.com)

3570 67th St  
Baldwin  
563-673-3131

**Hours:** Jan-Apr, Tues-Sun 11-5; May-Dec, daily 11-6.

**Admission:** Free ♿

## Traer Historical Museum



Featuring artifacts of Northern Tama County and Traer, this museum highlights the life of "Tama Jim" Wilson, U.S. Secretary of Agriculture from 1897 to 1913, record holder for the longest-serving U.S. Cabinet member, and one of only three Cabinet members to serve in the same post under three consecutive Presidents. Antique agricultural implements also exhibited.

[traer.com/Default.aspx?ID=13774&PageSite=16135](http://traer.com/Default.aspx?ID=13774&PageSite=16135)

514 2nd St  
Traer  
319-478-2346 or  
319-478-8660

**Hours:** Please call ahead.

**Admission:** Free ♿

## Tyden Farm No. 6 Tours



Listed on the National Register of Historic Places, this farmstead was originally owned by Emil Tyden, a Swedish immigrant and mechanical genius holding 200 patents during his lifetime. The sixth of eight farms, Tyden No. 6 was built between 1936 and 1941 and is still in use today by the Pfitzenberger family. No. 6 features a massive 40' x 140' barn and a 26,000-bushel concrete-block corncrib, both an unheard of size at that time.

[tydenfarm.com](http://tydenfarm.com)

1145 300th St  
Dougherty  
641-426-5277

**Hours:** Tours: July-Sept, typically last 3 hours.

**Admission:** Dependent on group size. Please call ahead.

♿



### Fun Facts:

Iowa consumers save \$1.69 at the pump every time they fill up because of ethanol.

[campsilos.org](http://campsilos.org)

# Silos & Smokestacks National Heritage Area

## 2016-2017 Visitors Guide

### University of Iowa Museum of Natural History



**E**xplore your world at the University of Iowa Museum of Natural History – Iowa’s gateway to the global environment. Take a trip back in time through 500 million years of our natural and cultural heritage, culminating in the landscape we live on today and the story of agriculture from the first Native American farmers through to modern day Iowa.

[mnh.uiowa.edu](http://mnh.uiowa.edu)

17 N Clinton St  
Iowa City  
319-335-0606

**Hours:** Tues, Wed, Fri & Sat 10-5, Thurs 10-8, Sun 1-5, closed National Holidays.

**Admission:** Free. ♿ ♿ ♿

### University of Northern Iowa Marshall Center School



**T**he Marshall Center School is a one-room school museum located on the campus of the University of Northern Iowa that has been restored as it was in the early 1920s, including original furnishings and period artifacts. An active reminder of Iowa’s historically prominent role in quality education, the school shares the story rural schools played in shaping 19th century America.

[Museum.library.uni.edu](http://Museum.library.uni.edu)

23rd St & Indiana St  
Cedar Falls  
319-273-2188

**Hours:** Tours by appointment.

**Admission:** Free. ♿

### Ushers Ferry Historic Village



**U**shers Ferry Historic Village interprets life in a small Iowa town at the turn of the 20th century. The 10-acre site features 20 historic homes and businesses that range in age from 1855-1919. Ushers Ferry offers many special events and programs throughout the year that explore the lives of farmers and townspeople in the community 100 years ago.

[ufhv.com](http://ufhv.com)

5925 Seminole Valley Trl NE  
Cedar Rapids  
319-286-5763

**Hours:** June-Aug, Mon-Fri 9-3:30.

**Admission:** \$2 adults, \$1 children 3-14 yrs, 2 yrs & under free. ♿ ♿ ♿

### Vesterheim Norwegian - American Museum



**W**ith over 24,000 artifacts and an Open Air Division of 12 historic buildings, this national treasure showcases the best in historic and contemporary Norwegian folk and fine arts, and the agricultural history of Norwegian immigrants. By telling the story of Norwegian immigrants, Vesterheim explores the experience of all immigrants in America. Come for festivals, special group tours or any time.

[vesterheim.org](http://vesterheim.org)

502 W Water St  
Decorah  
563-382-9681

**Hours:** May-Oct, daily 9-5. Nov-Apr, daily 10-4.

**Admission:** \$10 adults, \$8 seniors 65+ & \$5 children 7-18 yrs. Free on first Thursday of every month. ♿ ♿ ♿



# Sites & Attractions


Sites U - V

Relax. Play. Stay.

winneshiek county iowa

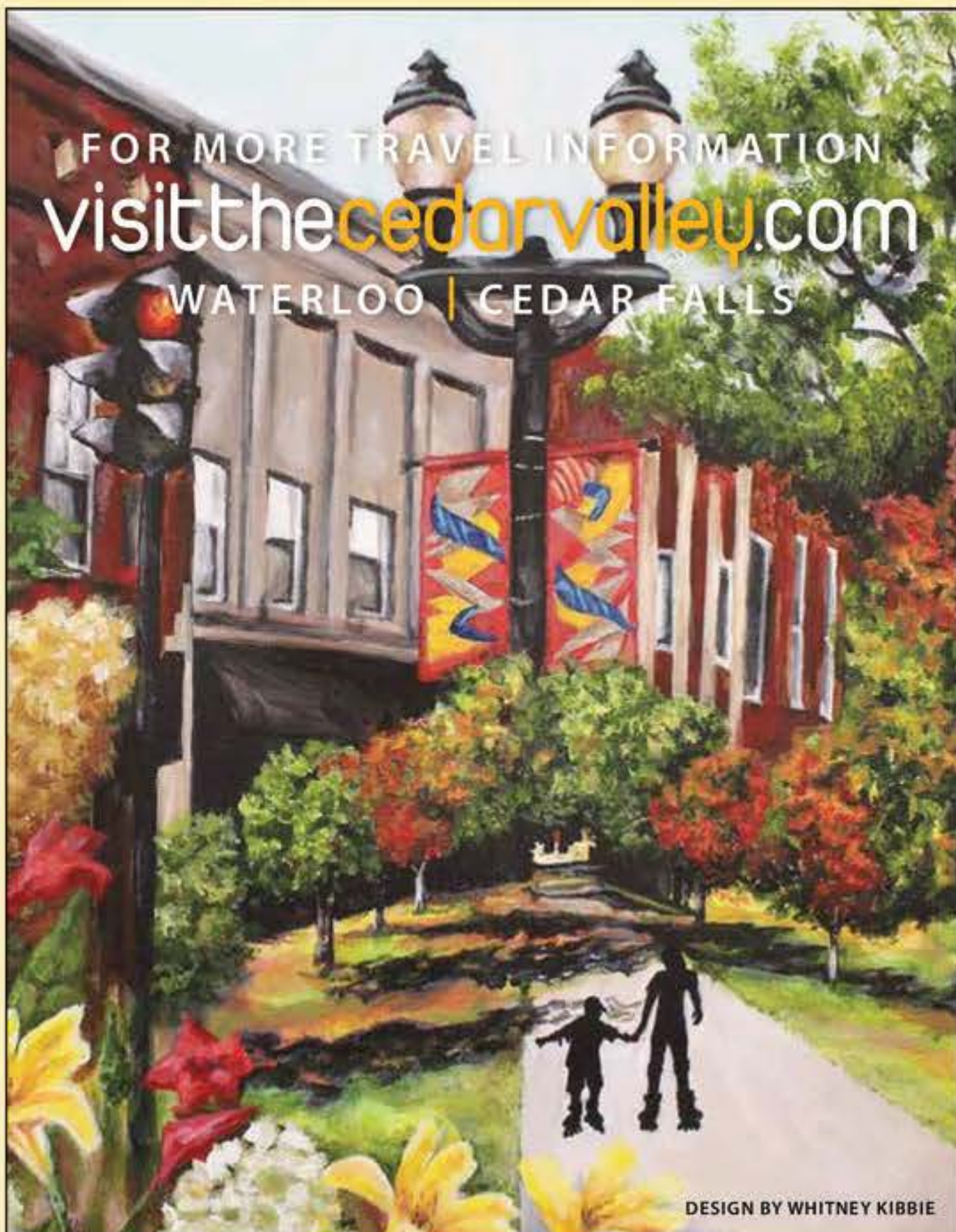


**Plan your visit**  
[www.visitdecorah.com](http://www.visitdecorah.com)





- Decorah Eagles • Limestone Bluffs • Nordic Fest • Organic Farms • Water Falls • Cabins • Trout Streams •
- World's Smallest Church • Meteor Crater • World's Best Beer • White Park Cattle • Billy Clocks • Driftless Region •



FOR MORE TRAVEL INFORMATION  
[visitthecedarvalley.com](http://visitthecedarvalley.com)  
 WATERLOO | CEDAR FALLS

DESIGN BY WHITNEY KIBBIE

## THE UNIVERSITY OF IOWA PENTACREST MUSEUMS

OLD CAPITOL MUSEUM  
MUSEUM OF NATURAL HISTORY




**Hours**

Tuesday, Wednesday,  
Friday, & Saturday  
10 a.m.–5 p.m.

Thursday  
10 a.m.–8 p.m.

Sunday  
1 p.m.–5 p.m.

Closed Mondays & holidays

**ADMISSION IS  
ALWAYS FREE!**

Located in  
Downtown Iowa City



THE UNIVERSITY OF IOWA  
**PENTACREST  
MUSEUMS**  
DOORWAYS TO DISCOVERY

Show us this ad for a discount in our gift shop.

# Silos & Smokestacks National Heritage Area

## 2016-2017 Visitors Guide

### Vinton Railroad Depot



**L**ocated in Vinton, Iowa, this 1900 railroad depot tells the industrial stories of how the railroad provided the infrastructure to allow industry to grow in Benton County. The railroad provided essential accessibility for businesses like the Iowa Canning Company, Vinton Produce Company, Vinton Steel Works and Vinton Pearl Button Company. The Depot, once the sales office for Hawk Bilt farm implements, now tells the story of that company and highlights the railroad's rich local history with artifacts and memorabilia. Visitors can step back in time in the authentic depot agent's office, which includes the original telegraph complete with sound.

[iagenweb.org/benton/bchs/bchs.htm](http://iagenweb.org/benton/bchs/bchs.htm)

612 2nd Ave  
Vinton  
319-472-3918

**Hours:** June-Sept, Thurs 5-7. Any time by appointment.  
**Admission:** Free, donations welcomed. ♿

### Wagaman Mill & Museum



**W**agaman Mill was built in 1846 by John R. Sparks as a paddle wheel sawmill on the North Skunk River. In 1848, the mill was converted into a grist mill with the construction of a wooden dam across the river. The 1868 addition of a hydraulic turbine allowed for year-long operation and the mill has since been utilized to produce flour, animal feed, meal and electric power.

[mycountyparks.com/County/Jasper/Park/Wagaman-Mill.aspx](http://mycountyparks.com/County/Jasper/Park/Wagaman-Mill.aspx)

200 East St  
Newton  
641-527-2766

**Hours:** Memorial Day thru the end of Sept, Sun 1-4. June 2 - August 8 Mondays: 9-12, Tuesday: 1-4, Thurs: 1-4 Fri: 9-12. Also available for tours, special events & groups by appointment.

**Admission:** Free-will donation. ♿

### Wallace Centers of Iowa



**T**he restored home of Uncle Henry Wallace, founding editor of *Wallace's Farmer*, highlights the most influential family of American agriculture. Group reservations available for programs including Hearts & Homes Historic Teas.

[wallace.org](http://wallace.org)

756 16th St  
Des Moines  
515-243-7063

**Hours:** Mon-Fri 9-2 or by appointment. Please call ahead.  
**Admission:** Self-guided or group tours by donation. After hours or guided group tours \$2 per person. ♿

### Wapsipinicon Mill Museum



**T**he Wapsipinicon Mill is one of Iowa's largest grist mills, towering six stories above the Wapsipinicon River. This museum interprets the grist milling process from 1870 to the 1940s and features original buhrstone stones, milling equipment, early agricultural artifacts and hands-on exhibits. Within walking distance to beautiful river side parks, specialty shops and eating establishments in historic downtown Independence.

[Buchanancountyhistory.com](http://Buchanancountyhistory.com)

100 1st St W  
Independence  
319-334-4616

**Hours:** Mid May-Sept, Tues-Sun 12-4 or by appointment.  
**Admission:** Free self-guided tours, donations welcome. Group/bus tours \$3 per person, call 319-334-6914 for reservations. ♿

# Sites & Attractions

Sites V - W

## Waterloo Center for the Arts

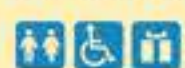


Something creative for the entire family: gallery exhibits, classes, ceramics and digital art studios, special events, gift store, ArtHouse Café, and the Phelps Youth Pavilion (interactive children's museum focused on cultural and agricultural exploration). The Center also holds the largest public collection of Haitian artwork in the U.S., Midwestern works by Grant Wood and Thomas Hart Benton, American Decorative Art, and International Folk Art.

[waterloocenterforthearts.org](http://waterloocenterforthearts.org)

225 Commercial St  
Waterloo  
319-291-4490

**Hours:** Tues-Sat 10-5, Sun 1-5, 3rd Thurs of each month 10-8.  
**Admission:** Galleries: Free, donations welcome. Phelps Youth Pavilion: \$5/person; Dollar Days: \$1/person; School Groups: \$1/person; Groups of 12 or more: \$3/person. Children 12 yrs & under must be accompanied by adult.



## Watson's Grocery Store Museum



Watson's Grocery Store was built in 1895 and continued, virtually unchanged, until 1989. Soon after, the State Center Historical Society was formed to save Watson's Grocery as a landmark and museum. Step inside to see stocked oak shelves, roll-top bins and ice box. Sturdy benches and chairs still await customers who trade farm fresh produce for grocery items.

106 W Main St  
State Center  
641-483-3002 or  
641-483-3546

**Hours:** Memorial Day thru Labor Day, Sat & Sun 1-4. Also by appointment.

**Admission:** Free.

## Wickiup Hill Learning Center & Area



The 683-acre complex includes the interpretive center and surrounding wetlands, reconstructed prairie, savanna, timber and five miles of trails. Numerous outdoor recreation opportunities such as hiking, snowshoeing, cross-country skiing, bird-watching and wildlife observation are available. Educational displays in the center highlight Wickiup Hill's natural resources and its archaeological past. Center includes Native American exhibits that depict the beginning of gardening and farming in Iowa.

[LinnCountyParks.com](http://LinnCountyParks.com)

10260 Morris Hill Rd  
Toddville  
319-892-6485

**Hours:** Interpretive Center: Mon-Fri 8-4:30, Sat 10-4, Sun 1-4.

**Admission:** Free.

## Winneshiek County Historical Society-Locust School Museum



Locust School was built in 1854 and operated continuously for 108 years. It is listed on the National Register of Historic Places. The Locust School Committee of the Historical Society was founded in 1965 to preserve the one-room school so generations of students would be able to see a reminder and symbol of all former rural school days.

1640 Big Canoe Rd  
Decorah  
563-382-4166

**Hours:** June thru Labor Day, Sat-Sun 1-4 or by appointment.

**Admission:** Free, donations accepted.





For additional information on travel, dining and accommodations visit the sites listed below.



Serving Waterloo for nearly 40 years with music, news & information

Your Station, Your Issues



Give online at [kbbgfm.org](http://kbbgfm.org)

## Before You Go, Visit Our Website at [silosandsmokestacks.org](http://silosandsmokestacks.org)



With so much to do, and so many things to see and experience, we can't fit it all into this one guide. For a complete listing of the many unforgettable experiences we have to offer, visit our website at [silosandsmokestacks.org](http://silosandsmokestacks.org).

Follow us on any of these social media sites:



The site is a great planning guide and includes:

- Expanded Partner Site listings
- Maps to show you the way
- Calendar of local festivals, fairs, exhibits and events
- Sample travel itineraries
- Trip planning tool
- Educational resources
- E-Newsletter sign-up



# 50 Day Trip Planner



Includes Site Number and Map Coordinates, Listed Alphabetically by Community

1	B-3	Ackley Heritage Center	Ackley	40	C-4	Norman Borlaug Boyhood & Birthplace Farms	Cresco	77	D-1	Plum Grove Historic Home	Iowa City
2	B-3	Carson Art Gallery	Ackley	41	F-1	Putnam Museum & Giant Screen Theater	Davenport	78	D-1	University of Iowa Museum of Natural History	Iowa City
3	B-3	Prairie Bridges Park	Ackley	42	D-4	Seed Savers Exchange	Decorah	79	B-2	Calkins Nature Area	Iowa Falls
4	D-1	Amana Heritage Society Museums	Amana Colonies	43	D-4	Vesterheim Norwegian - American Museum	Decorah	80	B-2	Eagle City Winery	Iowa Falls
5	A-2	Reiman Gardens - Iowa State University	Ames	44	D-4	Winneshiek County Historical Society-Locust School Museum	Decorah	81	B-2	Scenic City Empress Boat Club	Iowa Falls
6	A-2	Special Collections Department, Iowa State University	Ames	45	A-1	Iowa State Fair	Des Moines	82	A-1	Iowa Gold Star Military Museum	Johnston
7	F-2	Historic Limestone Insane Asylum	Andrew	46	A-1	State Historical Building	Des Moines	83	C-2	La Porte City FFA Historical & Ag Museum	La Porte City
8	D-3	Richardson-Jakway Historic Site	Aurora	47	A-1	The Wallace Centers of Iowa	Des Moines	84	C-1	Wagaman Mill & Museum	Lynnville
9	E-2	Tabor Home Vineyards & Winery	Baldwin	48	E-1	Miss Effie's Country Flowers & Garden Stuff	Donahue	85	E-2	Hurstville Interpretive Center	Maquoketa
10	E-3	Park Farm Winery	Bankston	49	B-3	Tyden Farm No. 6 Tours	Dougherty	86	E-2	Hurstville Lime Kilns	Maquoketa
11	A-3	Belmond Historical Society Museum	Belmond	50	B-3	Dows Historic District	Dows	87	F-2	Jackson County Historical Society Museum	Maquoketa
12	A-3	Jenison Meacham Memorial Art Museum & Farm	Belmond	51	E-2	Dubuque Museum of Art	Dubuque	88	E-3	Eagles Landing Vineyard & Winery	Marquette
13	F-1	Family Museum	Bettendorf	52	E-2	Four Mounds Inn & Conference Center	Dubuque	89	C-2	Grundy County Heritage Museum	Morrison
14	A-2	Mamie Doud Eisenhower Birthplace	Boone	53	E-2	Mathias Ham House Historic Site	Dubuque	90	C-4	Carnegie Cultural Center	New Hampton
15	D-4	Laura Ingalls Wilder Park & Museum	Burr Oak	54	E-2	Mines of Spain Recreation Area	Dubuque	91	B-1	Jasper County Historical Museum	Newton
16	D-4	Iowa's Dairy Center	Calmar	55	E-2	National Mississippi River Museum & Aquarium	Dubuque	92	B-1	Sugar Grove Vineyards & Gathering Place	Newton
17	E-2	Cascade Historic Limestone Silo	Cascade	56	E-3	National Farm Toy Museum	Dyersville	93	D-1	E. W. Kent Park	Oxford
18	C-3	Cedar Falls Historical Society	Cedar Falls	57	C-2	Dysart Historical Center	Dysart	94	B-1	Neal Smith National Wildlife Refuge	Prairie City
19	C-3	Hartman Reserve Nature Center	Cedar Falls	58	B-2	Hardin County Farm Museum	Eldora	95	B-3	Fossil & Prairie Park Preserve & Center	Rockford
20	C-3	University of Northern Iowa Marshall Center School	Cedar Falls	59	D-3	Gilbertson Conservation Education Area	Elgin	96	B-2	Watson's Grocery Store Museum	State Center
21	D-2	African American Museum of Iowa	Cedar Rapids	60	D-3	George Maier Rural Heritage Center of Clayton County	Elkader	97	A-2	Museums of Story City	Story City
22	D-2	Brucemore	Cedar Rapids	61	D-3	Motor Mill Historic Site	Elkader	98	D-3	Strawberry Hill Farm & Garden	Strawberry Point
23	D-2	Carl & Mary Koehler History Center	Cedar Rapids	62	D-4	Fort Atkinson State Preserve	Fort Atkinson	99	D-2	Wickiup Hill Learning Center & Area	Toddville
24	D-2	Cedar Rapids Museum of Art	Cedar Rapids	63	C-3	Farm House B&B/Engelbrecht Family Winery	Fredericksburg	100	C-2	Traer Historical Museum	Traer
25	D-2	Indian Creek Nature Center	Cedar Rapids	64	C-3	Hawkeye Buffalo Ranch	Fredericksburg	101	A-1	Living History Farms	Urbandale
26	D-2	Iowa Masonic Library & Museum	Cedar Rapids	65	D-3	Froelich General Store & Tractor Museum	Froelich	102	D-2	Vinton Railroad Depot	Vinton
27	D-2	National Czech & Slovak Museum & Library	Cedar Rapids	66	C-2	Barn Quilts of Grundy County	Grundy Center	103	C-3	Bennington No. 4 School	Waterloo
28	D-2	Ushers Ferry Historic Village	Cedar Rapids	67	B-3	Franklin County Fair & Grandpa's Farm	Hampton	104	C-3	Cedar Valley Arboretum & Botanic Gardens	Waterloo
29	C-4	Carrie Lane Chapman Catt Girlhood Home	Charles City	68A	B-3	Franklin Co. Historical Society Museum	Hampton	105	C-3	Grout Museum District	Waterloo
30	C-4	Floyd County Historical Society Museum	Charles City	68B	B-3	Franklin Co. REA Power Plant Museum	Hampton	106	C-3	Hawkeye Community College Farm Laboratory	Waterloo
31	A-3	4-H Schoolhouse Museum	Clarion	69	E-4	Ion Exchange, Inc.	Harpers Ferry	107	C-3	John Deere Waterloo - Tractor Cab & Assembly Operations (TCAO)	Waterloo
32	A-3	Heartland Museum	Clarion	70	B-2	Matthew Edel Blacksmith Shop	Haverhill	108	C-3	National Cattle Congress	Waterloo
33	B-4	Kinney Pioneer Museum	Clear Lake	71	D-3	Fontana Interpretive Nature Center	Hazleton	109	C-3	Waterloo Center for the Arts	Waterloo
34	D-3	Montauk Historic Site	Clermont	72	E-2	Delaware County Historical Museum	Hopkinton	110	E-1	Herbert Hoover Presidential Museum	West Branch
35	D-3	Riegel Blacksmith Shop	Clermont	73	C-2	Hansen's Farm Fresh Dairy/J&J Dairy	Hudson	111	D-3	Fayette County Historical Center	West Union
36	F-1	Clinton County Historical Society Museum	Clinton	74	D-2	Cedar Rock the Walter House	Independence	112	D-1	Kinze Innovation Center	Williamsburg
37	D-1	1876 Coralville Schoolhouse	Coralville	75	D-2	Heartland Acres Agribition Center	Independence	113	B-2	Iowa River Greenbelt Scenic Drive	See Map
38	D-1	Iowa River Gazebo	Coralville	76	D-2	Wapsipinicon Mill Museum	Independence	114	A-3	Northern Iowa River Greenbelt Scenic Drive	See Map
39	D-1	Johnson County Historical Society Museum	Coralville								

# Featured Festivals & Events



## Maple Syrup Festival

1st weekend in March  
Hartman Reserve Nature Center, Cedar Falls

## Hoover's Hometown Days

1st weekend in August  
Herbert Hoover Presidential Museum, West Branch

## Oktoberfest

1st weekend in October  
Amana Heritage Society Museums, Amana

**Festivals**



## Franklin County Fair

3rd weekend in July  
Franklin County Fair & Grandpa's Farm, Hampton

## Iowa State Fair

Eleven days in August, ending the Sunday two weeks prior to Labor Day - Iowa State Fair, Des Moines

## National Cattle Congress Fair

2nd or 3rd weekend in September  
National Cattle Congress, Waterloo

**Fairs**



## Heartland Acres Tractor Ride

2nd weekend in June  
Heartland Acres Agribition Center, Independence

## Prairie Homestead Antique Power & Country Craft Show

3rd weekend in August  
Jenison-Meacham Memorial Art Museum & Farm, Belmond

## National Farm Toy Show

1st weekend in November  
National Farm Toy Museum, Dyersville

**Shows**



## Breakfast on the Farm

3rd weekend in June  
Iowa's Dairy Center, Calmar

## Living History Farms Off Road Race

Saturday before Thanksgiving  
Living History Farms, Urbandale

## Norwegian Christmas

1st weekend in December  
Vesterheim Norwegian-American Museum, Decorah

**& More**

Discover other events at [silosandsmokestacks.org/events](http://silosandsmokestacks.org/events)

From a summer filled with fairs to the harvest festivals of fall, the agricultural heritage of the region is celebrated year-round. Whether it be tasting farm fresh foods or finding product made by local artisans, nearly every weekend holds a different adventure. Above is just a sampling of the annual events in the Heritage Area. Please visit our website for an up-to-date listing of all the festivals and events in our 37-county area.

Fold-  
Out  
Map  
Next Page



This map is for representational purposes only. Sites are keyed to nearest town and may not represent the actual location of the site. Please reference a local/IDOT map for navigation or place the desired site address into your GPS device.

### Other National Park Service Sites



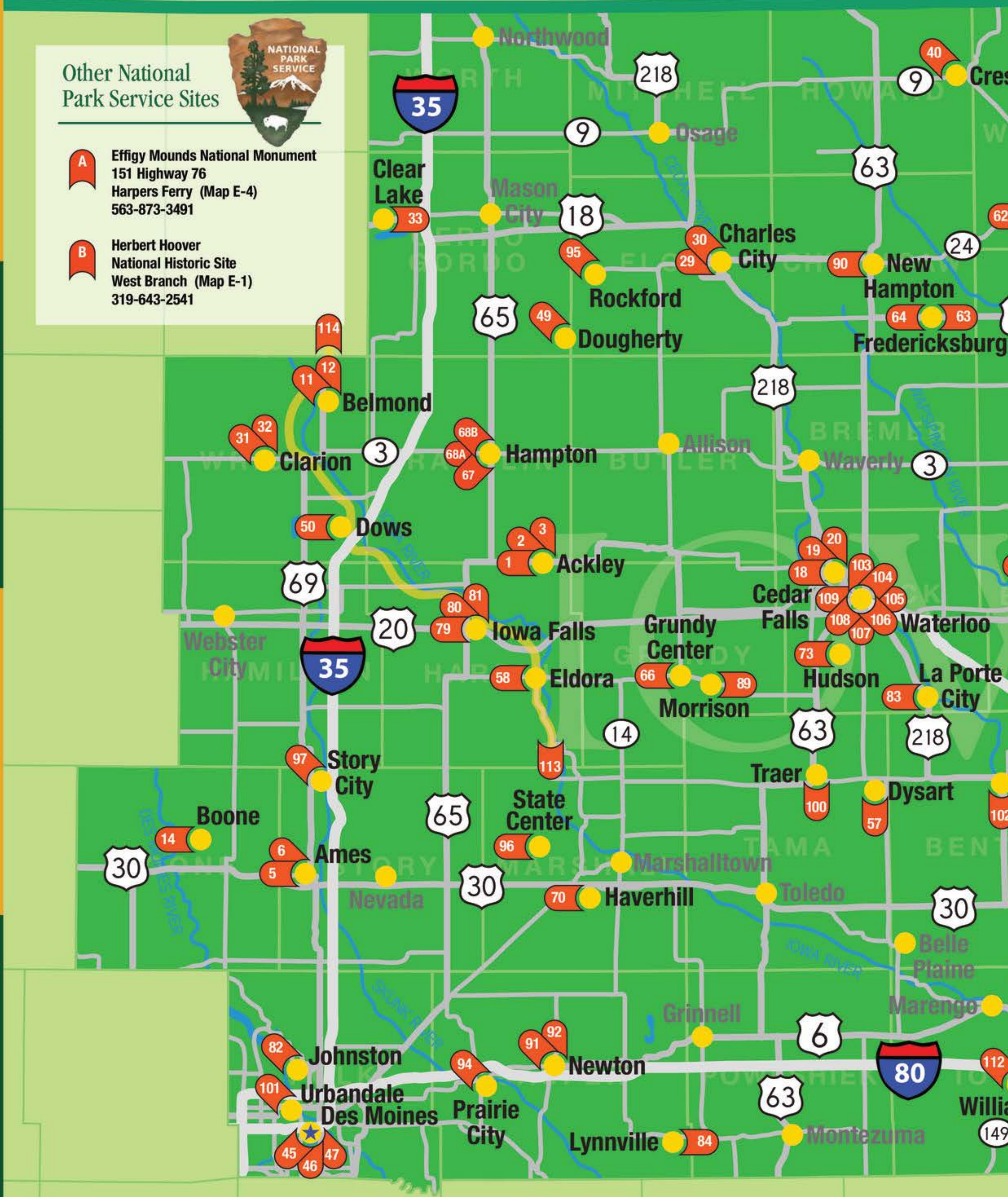
- A** Effigy Mounds National Monument  
151 Highway 76  
Harpers Ferry (Map E-4)  
563-873-3491
- B** Herbert Hoover National Historic Site  
West Branch (Map E-1)  
319-643-2541

4

3

2

1



# Distance From Major Midwest Cities



Chicago to Dubuque	171 miles
Milwaukee to Dubuque	173 miles
Minneapolis to Decorah	157 miles
St. Louis to Cedar Rapids	297 miles
Kansas City to Des Moines	210 miles
Omaha to Des Moines	135 miles



Fowler Building  
604 Lafayette Street  
Suite 202  
Post Office Box 2845  
Waterloo, IA 50704-2845



© 2016 Silos & Smokestacks  
National Heritage Area

# Capture the Heart of AMERICA

## PHOTO CONTEST

Preserving & Sharing America's  
Agricultural Story in a 37-county  
Region of Northeast Iowa.



Photo by Diane Michaud Lowry

ENTRIES ACCEPTED  
*July - September*



Photo by Kelly Youngblut

BEST OF SHOW



Photo by Bethany Crawford

FIRST PLACE



Photo by Greg Purnell

SECOND PLACE

THIRD PLACE

### { CONTEST CATEGORIES }

AMERICAN FARMSCAPES | LIFE ON THE FARM | CELEBRATIONS OF AGRICULTURE  
SILOS & SMOKESTACKS PARTNER SITES | AMERICA'S AGRICULTURAL INDUSTRY

*Photos can be taken anywhere in the country.*

SUPPORTED IN PART BY: Solon *Andreas* Foundation

For questions call 319.234.4567

Enter online at [silosandsmokestacks.org](http://silosandsmokestacks.org)