

NATIONAL MARINE SANCTUARY OF AMERICAN SAMOA



Photo: Jada Asher, NOAA



The National Marine Sanctuary of American Samoa is comprised of six protected areas, covering 13,581 square miles of near-shore coral reef and offshore open ocean waters across the archipelago. Of these, three areas located on and near Tutuila are relatively accessible: Fagatele Bay and Fagaluva/Fogama'a are along the southwest coast of the island, and Aunu'u is just southeast of Pago Pago Harbor. The other areas are remote and accessible only by boat. The sanctuary includes deep water reefs, hydrothermal vents, some of the world's oldest and largest Porites coral heads, rare archaeological resources, and also encompasses important fishing grounds. It is also the only true tropical reef within the National Marine Sanctuary System.

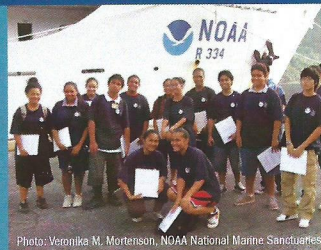


Photo: Veronika M. Mortenson, NOAA National Marine Sanctuaries

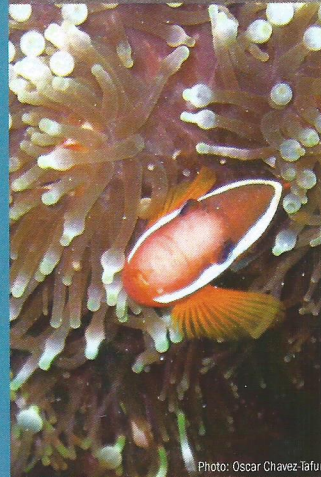


Photo: Oscar Chavez-Iafur

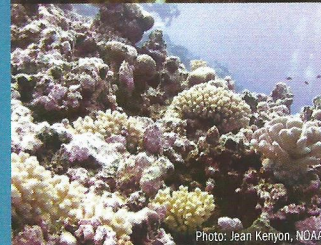
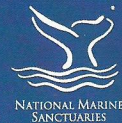
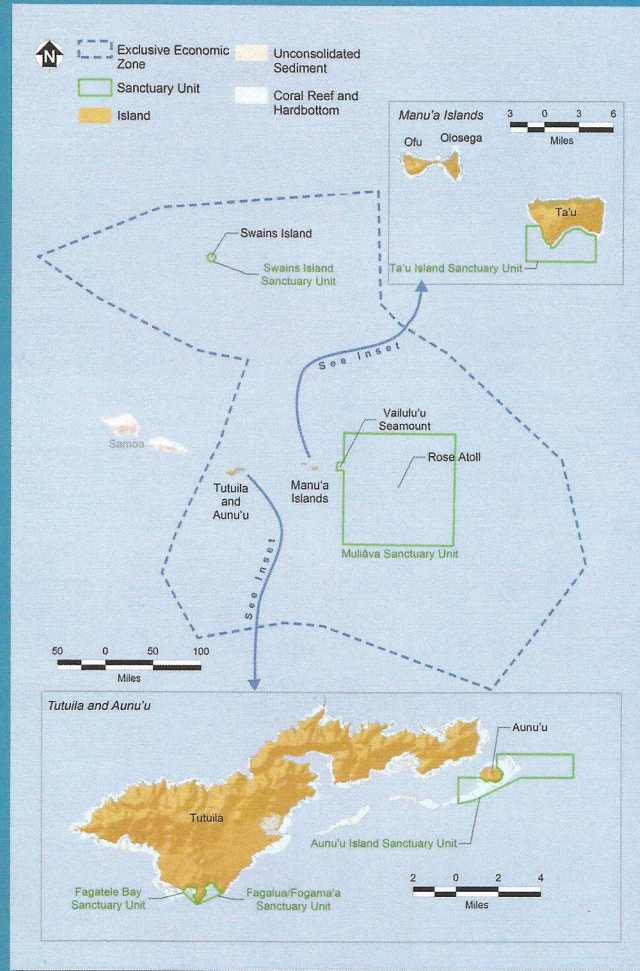


Photo: Jean Kenyon, NOAA

National Marine Sanctuaries
National Oceanic and Atmospheric Administration



NATIONAL MARINE SANCTUARY OF AMERICAN SAMOA



Visitors are encouraged to visit the areas on Tutuila—hiking, swimming, and exploring the magnificent reefs within the sanctuary. While the other areas are open to the public, they require a reliable vessel and experienced captain for safe access. These areas are important for scientific research and to protect unique natural and cultural resources.

National Marine Sanctuary of American Samoa
 Tauese P.F. Sunia Ocean Center
 P.O. Box 4318, Pago Pago, AS 96799
 Phone: (684) 633-6500, Fax: (684) 633-6511



[HTTP://AMERICANSAMOA.NOAA.GOV](http://AMERICANSAMOA.NOAA.GOV)