

# HOW TO GET TO SEQUOIA AND KINGS CANYON

## RAILROAD SERVICE

No rail service directly to the two Parks. Southern Pacific Railway to Tulare, from there Sequoia Motor Coach Service to Sequoia (Giant Forest Lodge). Schedule of Sequoia buses, see below.

## BUS SERVICE

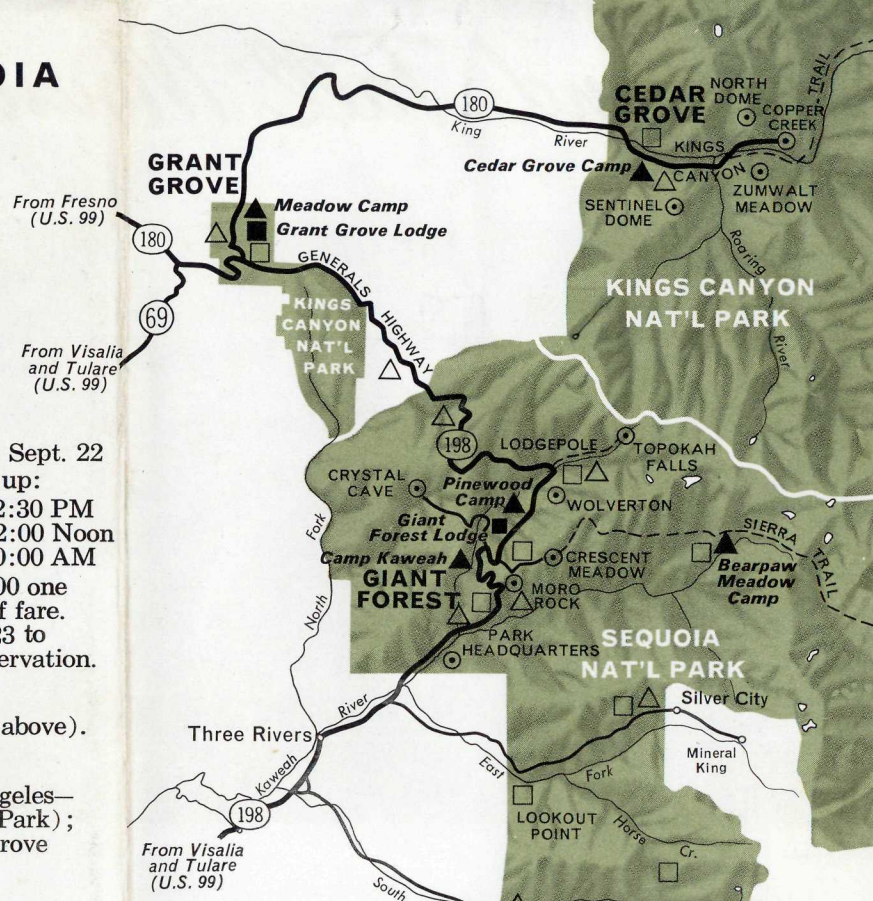
Continental Trailways to Tulare or Western Greyhound to Tulare or Visalia; then Sequoia Motor Coach to Sequoia (Giant Forest Lodge). Sequoia coaches stop at railroad and bus stations. Sequoia Motor Coach Schedule—daily, May 24 to Sept. 22  
 Read up:  
 Lv. 2:05 PM Tulare (Southern Pacific Sta.) Ar. 12:30 PM  
 Lv. 2:45 PM Visalia . . . . . Lv. 12:00 Noon  
 Ar. 5:05 PM Giant Forest Lodge, Sequoia. . . Lv. 10:00 AM  
 Fare: Tulare or Visalia to Giant Forest Lodge \$6.00 one way, \$8.75 round trip. Children 6 to 11 years, half fare. 50 lbs. of hand baggage carried free. From Sept. 23 to May 23, "on-call" service available on advance reservation.

## AIR SERVICE

United Air Lines to Visalia; from there bus (see above).

## HIGHWAYS

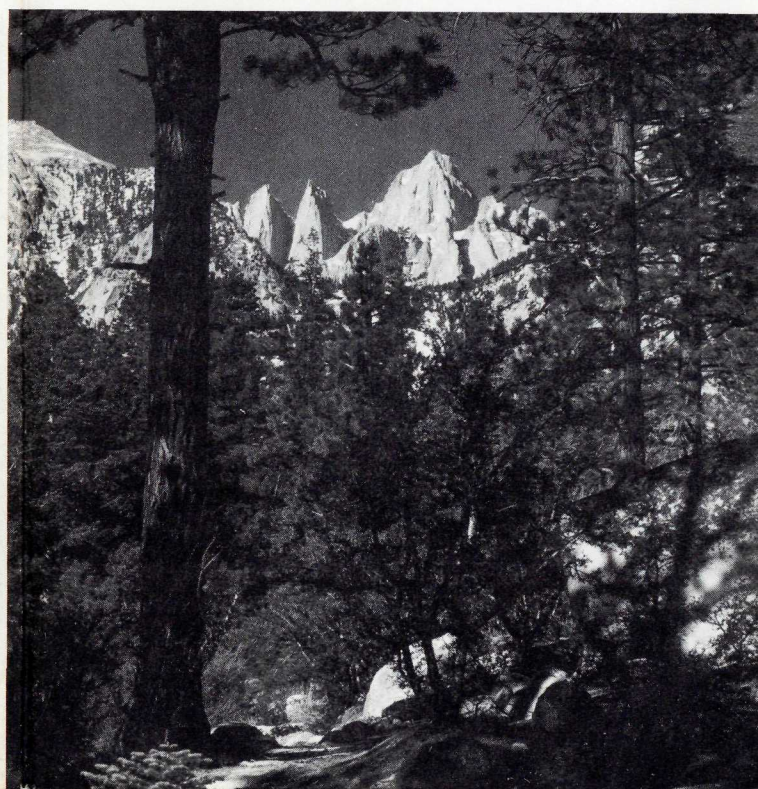
State Highway 198 off U.S. Highway 99 (Los Angeles—Sacramento) to Giant Forest (Sequoia National Park); State Highway 63 and 180 off U.S. 99 to Grant Grove (Kings Canyon National Park).



MILEAGE	To Giant Forest, Sequoia	To Grant Grove, Kings Canyon
From Los Angeles	232	239
Tulare	61	66
Visalia	50	55
Fresno	81	55
Giant Forest, Sequoia	—	30
Grant Grove, Kings Canyon	30	—
Cedar Grove, Kings Canyon	60	30
Copper Creek, Kings Canyon	66	36
Yosemite	176	148
San Francisco	265	239
Furnace Creek, Death Valley	362	367
Grand Canyon South Rim	657	662



Kings Canyon: General Grant Tree in Grant Grove  
 Sequoia: Mount Whitney at the Eastern Park Boundary



**SEQUOIA AND KINGS CANYON**  
 National Parks are two large contiguous areas of mountains, canyons, rivers and lakes, which, from the visitor's point of view, can be considered an entity. The region encompasses 1300 square miles of some of the High Sierras' most spectacular scenery, including Mount Whitney (14,495 ft.), highest peak in the United States outside of Alaska.

Sequoia National Park, the southern area, is the second-oldest National Park. It was established in 1890, primarily to preserve the giant sequoias, known to be some of the world's largest and oldest living things. The numerous groves of these enormous trees concentrated in the so-called **Giant Forest** (Congress Group, Senate Group, etc.) still are the main attraction of the Park. They are climaxed by the General Sherman Tree, which measures 272 ft. in height and 36½ ft. in diameter; its age is estimated at 3-4,000 years. However, there are also many other attractions: Moro Rock, a granite rock accessible over a stone stairway and offering a magnificent view of the Great Western Divide; Crystal Cave with beautiful limestone formations; Wolverton Meadow, the Tokopah Falls of the Kaweah River and Heather Lake; and the High Sierra Trail leading over Crescent Meadow—known for its wildflowers—and spectacular Bearpaw Meadow to glaciated Kern Canyon and majestic Mount Whitney at the eastern park boundary.

Kings Canyon National Park is a region of giant canyons with towering rock walls, countless lakes, waterfalls and mountain meadows. In its western sector, connected with Sequoia's Giant Forest by the scenic 30-mile Generals Highway, **Grant Grove** is the main center of interest. Here, too, are beautiful stands of giant sequoias; among them, the General Grant Tree, second in size only to the General Sherman Tree. From Grant Grove, a 30-mile highway follows the winding Kings River into the eastern park sector, to **Cedar Grove** and 6 miles beyond to Copper Creek, the culmination of the canyon's superb scenery. There are many scenic highlights: Roaring River Falls, Zumwalt Meadow and the sheer granite cliffs of the North Dome and Grand Sentinel. Hiking and riding trails penetrate the magnificent mountain and lake region east of the road terminus.

# SEQUOIA AND KINGS CANYON

NATIONAL PARKS, CALIFORNIA



PRESENTED BY:

# SEQUOIA AND KINGS CANYON

NATIONAL PARKS, CALIFORNIA



HOW TO GET THERE • LODGES AND CAMPS  
 WHAT TO SEE AND DO • CONDUCTED TOURS

*Fred Harvey*  
 Parks open all year, but not all facilities





Kings Canyon: Fishing in Roaring River Falls

## Where to Stay AT SEQUOIA NATIONAL PARK

### Giant Forest Lodge

*in the Giant Forest*

The main Lodge and accommodations consisting of cabins and cottages are located in the heart of Giant Forest under the big trees near Giant Forest Village, all at an altitude of 6,500 feet. Registrations for all accommodations are at Giant Forest Lodge. Also available for guests convenience is a large attractive Dining Room, Cocktail Lounge, and Gift Shop. In nearby Giant Forest Village a modern Buffetaria, Gift Shop, Market, and Service Station, are conveniently located. Various types of accommodations are offered for vacation pleasure. These are rustic one or two-room cottages with tub bath and Safe-Aire heaters, modern motel-type rooms with combination tub and shower bath, sleeping cabins without bath and with wood-burning stoves, and furnished housekeeping cabins (some canvas-topped) without bath. Many sleeping cabins have outdoor patio kitchens. All facilities open from May 24 as long as good weather prevails, and many accommodations are available year round. Checkout time: 12 Noon.

**Rates** (European Plan) per Day:

**Open May 24 until winter weather prevails**

Sleeping Cabins without Bath

Single	\$ 5.75
Double	8.00
Each Additional Person	1.25

(Free shower facilities in Central Bathhouse)

Housekeeping Cabins, Furnished and Serviced, without Bath

Single	\$ 9.00
Double	10.50
Each Additional Person	1.25

(Free shower facilities in Central Bathhouse)

Two-Room Cottages with Connecting Bath

Double	\$20.00
Triple	22.50
Each Additional Person	2.50

**Open all year**

One-Room Cottages with Bath

Single	\$12.00
Double	16.00
Each Additional Person	2.50

Motel-Type Rooms with Bath

Single	\$13.00
Double	17.00
Each Additional Person	2.50

Each Bed or Baby Crib added, per Day . . . . . 2.00

Children under three occupying room with adult; no charge. Children three to seven inclusive; half rate. Children eight years or older; full rate.

Various cabins and cottages are also available on the American Plan (three meals included) at the additional charge of \$7.45 per person per day. Children under three; 75¢ per meal. Children three to seven inclusive; \$4.00. Children eight and over; full rate.

**Meal Service:**

Buffet Service in the Dining Room (open May 24 to September 30); breakfast \$1.60, luncheon \$2.00 and dinner \$3.85 (special dinners \$4.25 to \$5.00). The nearby Buffetaria (open all year) offers breakfast, luncheon and dinner a la carte. Reduced portions and prices for children. Box lunches available. Guests on the American Plan can also eat at the Buffetaria (necessary after closing of Dining Room) or obtain meal exchange cards for the Coffee Shop located in Kings Canyon National Park.

### Bearpaw Meadow Camp

*on Bearpaw Meadow*

This is a trail camp for hikers and saddle horse parties. Located on the High Sierra Trail at an altitude of 7,800 ft., 11 mi. from Crescent Meadow in Giant Forest, Bearpaw Meadow Camp serves as base for trips to Kern Canyon and Mount Whitney; it is surrounded by spectacular scenery. Accommodations are plain but comfortable, in tents. Open from approximately June 23 to September 4.

**Rate:** For single bed, one or two persons in a tent: \$5.00 per person per day. Checkout Time: 12 Noon.

**Meal Service:** Wholesome meals available: Breakfast \$2.00, Box Luncheon \$1.50 and Dinner \$3.00.

## Where to Stay AT KINGS CANYON NAT'L PARK

### Grant Grove Lodge

*at Grant Grove*

Located near the big trees and Grant Grove Village at an altitude of 6,600 ft. There are rustic cottages with tub bath and sleeping cabins without bath, heated by wood-burning stoves. Central building contains Coffee Shop, Lounge, Cocktail Lounge, Souvenir Shop. In the Village, there is a Market, Service Station and a Park Service Visitor's Center. The lodge is open from May 24 until November 1.

**Rates** (European Plan) per Day:

Sleeping Cabins without Bath

Single	\$ 5.75
Double	8.00
Each Additional Person	1.25

(Free shower facilities in Central Bathhouse)

Housekeeping Cabins, Furnished and Serviced, without Bath

Single	\$ 9.00
Double	10.50
Each Additional Person	1.25

(Free shower facilities in Central Bathhouse)

One-Room Cottages with private Bath

Single	\$12.00
Double	16.00
Each Additional Person	2.50

Extra Cot or Baby Crib added, per Day . . . . . 2.00

Children under three occupying room with adult; no charge. Children three to seven inclusive; half rate. Children eight years and older; full rate.

Checkout time: 12 Noon

**Meal Service:**

Central Building Coffee Shop open from May 24 to November 1 with limited winter service.

### Cedar Grove Camp

*at Cedar Grove*

Located near the terminus of the scenic highway into the spectacular Kings River Canyon, at an altitude of 4,600 ft. It offers a limited number of accommodations in sleeping cabins without bath, heated by wood-burning stoves. There are also a Snack Bar, a well-stocked Market, a Camper's Supply Store, a Service Station and a Park Service Information Center. The lodging accommodations are open June 10 to Sept. 8, Market and Service Station, June 9 to Sept. 8.

**Rates** (European Plan) per Day:

Sleeping Cabins without Bath

Single	\$ 5.75
Double	8.00
Each Additional Person	1.25

Extra Cot or Baby Crib added, per Day . . . 2.00

(Free shower and tub facilities in Central Bathhouse)

Children under three occupying room with adult; no charge. Children three to seven inclusive; half rate. Children eight years and older; full rate.

Checkout time: 12 Noon

*No advance reservations accepted for these cabins.*

**Meal Service:**

Snack Bar (open June 10 to Sept. 8)

**All Rates** quoted in this folder are subject to change without notice.

No seasonal price increases, however.

**5% County Occupancy Tax** on rooms and **5% State Sales Tax** on meals not included in the prices quoted.



Sequoia: Typical Motel-Type Room



Kings Canyon: Grant Grove Lodge

ALL LODGES AND CAMPS OPERATED BY THE SEQUOIA AND KINGS CANYON NATIONAL PARKS COMPANY, A SUBSIDIARY OF



### RESERVATIONS AND INFORMATION

Reservations for lodging should name the desired lodge or camp and specify the wanted type of accommodations, length of stay and means of transportation. Reservations for conducted motor coach sight-seeing tours should specify the desired tour, starting day, point of arrival (Visalia or Tulare), means of transportation to this point and type of accommodations (with or without bath, number of people in room) as well as extra days of stay if any. If possible, give alternative dates and type of accommodations. Mail to the Parks is sometimes slow—allow several days for delivery.

A deposit equivalent to a day's lodging or \$15.00 for the All-Expense Sight-seeing Tours is required to protect a reservation. It will be refunded if cancellation is received 24 hours before scheduled arrival.

For information on and reservations for Sequoia National Park, bus transportation and conducted motor coach sight-seeing trips, write or call:

#### Fred Harvey Reservations Office

Sequoia National Park, California 93262 Telephone: (209) 565-3421, Teletype: (209) 764-4424 (April 19 to Sept. 22 only)

For information on and reservations for Kings Canyon National Park, write or call:

#### Fred Harvey Reservations Office

Kings Canyon National Park, California 93633 Telephone: (209) Grant Grove #2, via Reedley, California

#### Other Fred Harvey Reservation Offices

Los Angeles, California 90013, 527 S. Olive St. Telephone: (213) 627-8048, Teletype: (213) 683-0411

San Francisco, California 94108, 210 Post St. Telephone: (415) 392-3760

Chicago, Illinois 60604, 80 E. Jackson Blvd. Telephone: (312) 427-3489, Teletype: (312) 431-1437





Sequoia: Giant Forest, Senate Group

## GENERAL INFORMATION

**Park Entrance Fee:** 50¢ per person per day or \$7 for a "Golden Passport" (valid for one year, April 1 to March 31); collected by National Park Service at Park entrance.

**Information Centers:** Information centers of the National Park Service at Ash Mountain, Lodgepole, Giant Forest, Grant Grove and Cedar Grove Villages.

**Service Stations:** At Giant Forest, Grant Grove and Cedar Grove Villages.

**Trailer Camping:** At Potwisha, Lodgepole, Dorst, Grant Grove and Cedar Grove.

**Public Camp Sites:** Over 1700 camp sites available at various locations. 14-day limit.

**Markets:** At Lodgepole, Giant Forest, Grant Grove and Cedar Grove Villages. Food supplies, drug sundries, camping equipment, fishing tackle and licenses, ice.

**Mail Service:** Post offices in Giant Forest and Grant Grove Villages. Daily service, except Sunday.

**Barber Shop:** In Giant Forest Village.

**Religious Services:** Catholic, Protestant and Latter-day Saints on Sundays during the summer months.

**Evening Campfire Programs** present the natural attractions and history of the Parks.

**Hiking:** Individually or in groups conducted by the National Park Service on schedule.

**Horseback Riding:** Available in both Parks. Rates on request.

**Pack Trips:** Information available from the National Park Service, Sequoia and Kings Canyon National Parks.

**Fishing:** Trout season approximately May 1 to Oct. 30. California State license required (available at Markets).

**Firearms and Hunting:** Strictly prohibited.

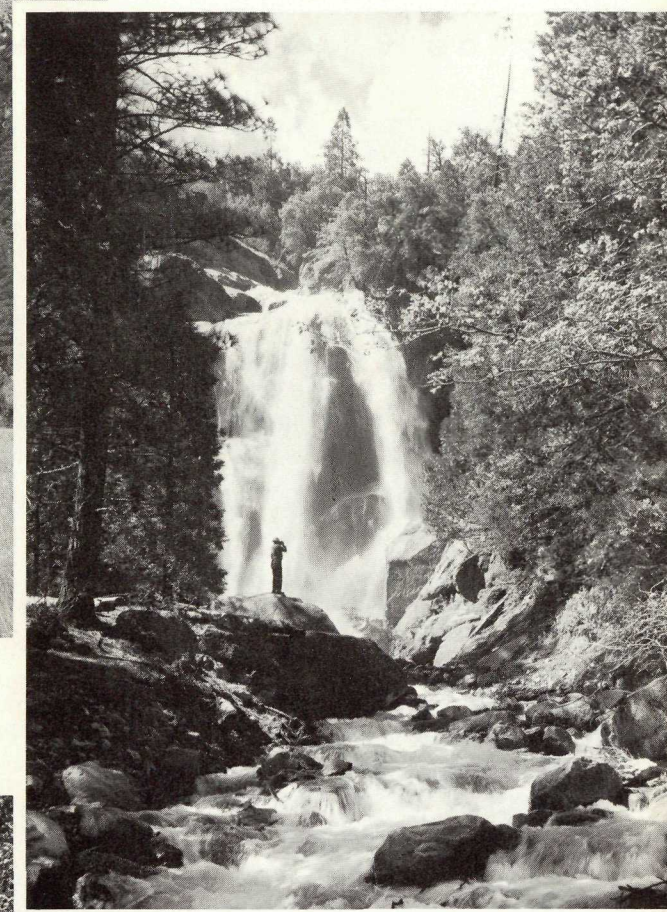
**Pets:** Permitted if kept on leash; not allowed on Park trails.

**Clothing:** During summer months, days are warm, but nights are always cool, requiring warm wraps for mornings and evenings. Casual sport dress is appropriate, and hiking shoes are recommended.

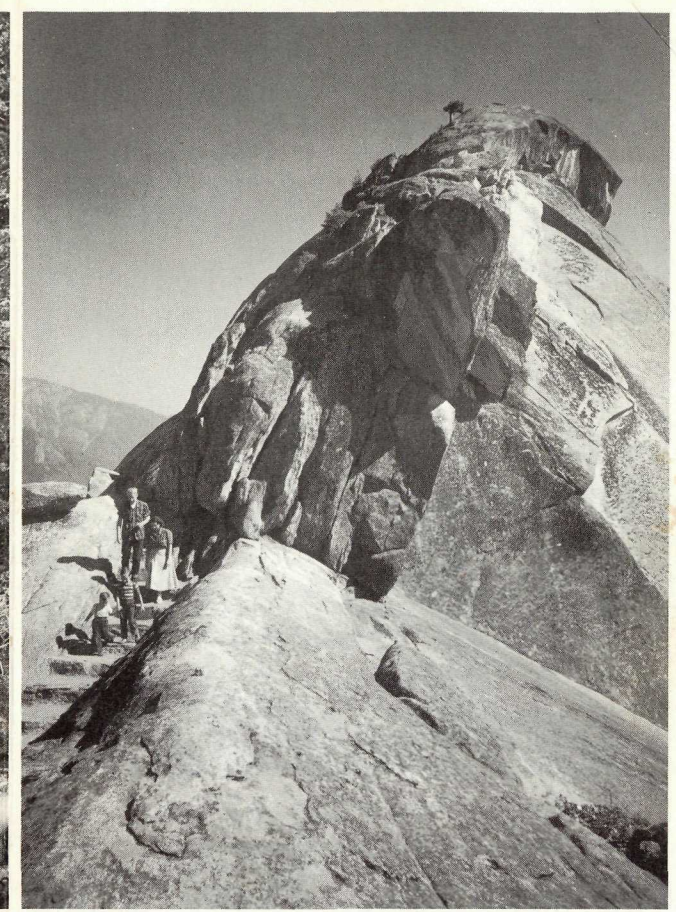
**Sight-Seeing:** The best way to see the major attractions of both Parks is by Conducted Motor Coach Tour (see left columns). You will see and learn more in a shorter time than you could on your own, even if you have your car along.



Kings Canyon: Zumwalt Meadow near Copper Creek



Kings Canyon: Grizzly Creek Falls



Sequoia: Moro Rock in Giant Forest

Sequoia: Giant Forest in Winter



**Autumn at Sequoia-Kings Canyon National Parks** is delightful. Clear days and cool nights are refreshing and invigorating; the forests are beautiful as the dogwood, quaking aspen and oak turn to flaming colors and the animals change to their winter coats.

**Winter at Sequoia-Kings Canyon National Parks** is a never-to-be-forgotten experience. Snow blankets the Big Trees and the vistas of the wintry High Sierras are of indescribable grandeur. Amid this splendor is a flurry of activity as sport enthusiasts take advantage of the many facilities offered during this delightful season. At Wolverton Ski Bowl, there is the Beginner's Hill, 600' long with a tow rope vertical rise of 80'; the Intermediate Hill is 800' long with a tow rope vertical rise of 150' and the Novice Hill is 1000' long with a tow rope vertical rise of 175'. Group or private lessons are available as well as skis, poles, boots, and rope tow grippers for rent. Over at Lodgepole, skating is a popular sport at the beautiful Ice Rink, with the surrounding snowy hills dotted with sledders. Snack service is available at both locations as well as rental equipment. Lodging, a Buffetaria and Cocktail Lounge are open year round in the nearby Giant Forest. The Generals Highway, connecting Giant Forest and Grant Grove, is open all year.

## Sight-Seeing



## CONDUCTED MOTOR COACH TOURS

*in glass-top motor coaches*

50 lbs. of hand baggage carried free

For information, write or call the Fred Harvey Reservations Office at Sequoia National Park—see other side of folder

### Two-Hour Giant Forest Tour

Daily, May 25 to September 22

Leaving Giant Forest Lodge 7:45 A.M. . . . . \$2.00  
Children, 6 to 11 years inclusive, half rate.

### All-Day Kings Canyon Tour

Daily, May 25 to September 21

Leaving Giant Forest Lodge 10:05 A.M., returning 5:30 P.M. . . . . \$7.50  
Luncheon at Grant Grove not included.  
Children, 6 to 11 years inclusive, half rate.

### All-Expense Sequoia Tour

Daily, May 25 to September 21

A trip for train or bus travelers who can allot only a minimum of time and expense.

**1st Day:** From Tulare (2:05 P.M.) or Visalia (2:45 P.M.) through the orange groves and vineyards of the San Joaquin Valley to the cool, clear mountain air of the Giant Forest in Sequoia. Dinner and lodging at Giant Forest Lodge; after dinner, campfire entertainment.

**2nd Day:** After breakfast, a two-hour 15-mile lectured sightseeing trip through the Giant Forest; then return to Visalia (12:00 Noon) and Tulare (12:30 P.M.).

Rates incl. transportation, meals and lodging, per person: Without Bath, Single \$21.95, Double \$20.20, Triple \$19.28 With Bath . . . Single \$28.20, Double \$24.70, Triple \$23.03 Children's Rates: Special rates available—write for information, giving age of children.

### All-Expense Sequoia-Kings Canyon Tour

Daily, May 25 to September 21

An all-inclusive tour, enabling the train or bus traveler to see all major attractions in both Parks.

**1st Day:** From Tulare (2:05 P.M.) or Visalia (2:45 P.M.) through the orange groves and vineyards of the San Joaquin Valley to the cool, clear mountain air of the Giant Forest in Sequoia. Dinner and lodging at Giant Forest Lodge; after dinner, campfire entertainment.

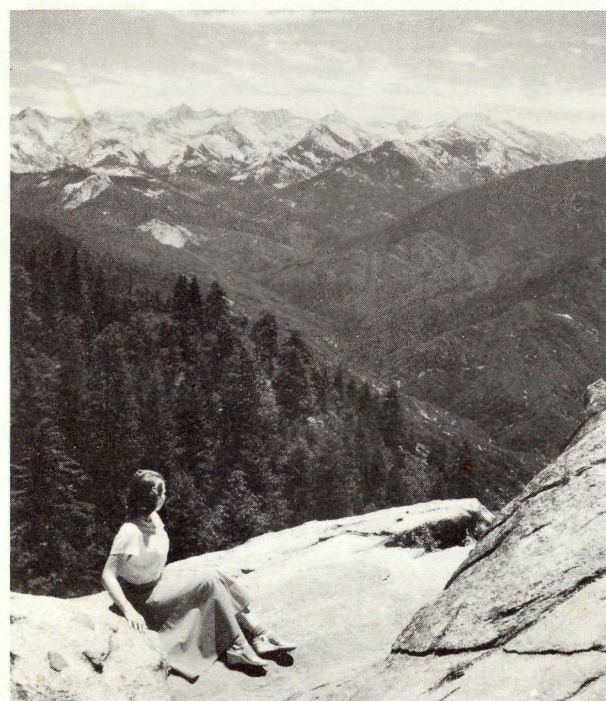
**2nd Day:** After breakfast, a two-hour 15-mile lectured sightseeing trip through the Giant Forest. At 10:05 A.M. starts a 132-mile lectured trip over the Generals Highway to Grant Grove (luncheon stop) and on through spectacular Kings Canyon to Cedar Grove and Copper Creek. Return to Giant Forest (5:30 P.M.), dinner and lodging at Giant Forest Lodge; after dinner, campfire entertainment.

**3rd Day:** After breakfast, leisure until 10:00 A.M.; return to Visalia (12:00 Noon) and Tulare (12:30 P.M.).

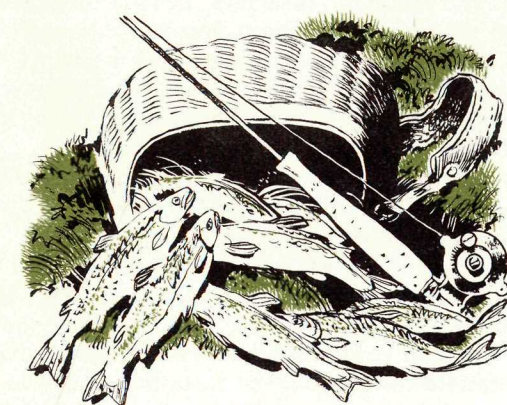
Rates incl. transportation, meals and lodging, per person: Without Bath, Single \$42.65, Double \$39.15, Triple \$37.31 With Bath . . . Single \$55.15, Double \$48.15, Triple \$44.81 Children's Rates: Special rates available—write for information, giving age of children.

#### Rates for additional days:

Lodging and three meals, per day per person: Without Bath, Single \$13.20, Double \$11.45, Triple \$10.53 With Bath . . . Single \$19.45, Double \$15.95, Triple \$14.28 Children's Rates: Children under 3 occupying room with adult, no charge for room, 75¢ per meal. Children 3 to 7 inclusive, half of adult room rate plus \$4.00 for meals. Children 8 years and over, full rate for room and meals.

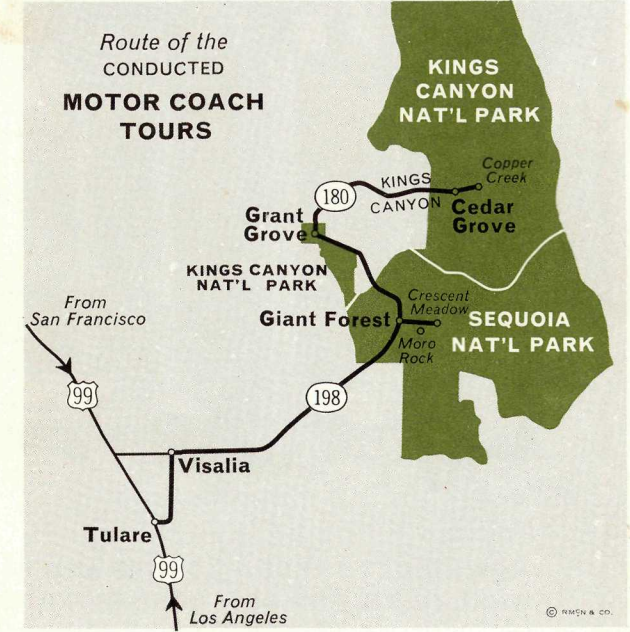


Sequoia: Great Western Divide from Moro Rock



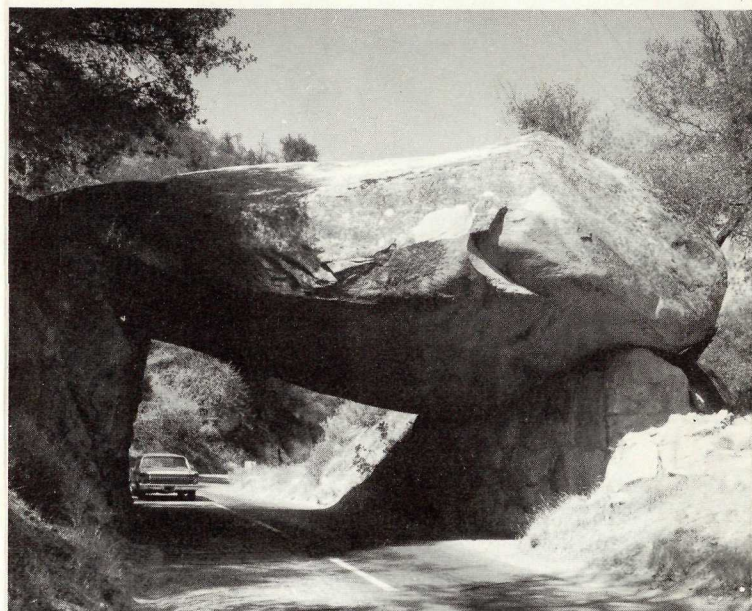
### Other Fred Harvey Hotels in the Southwest

In late fall and throughout the winter, your trip to Sequoia and Kings Canyon can easily be combined with a resorting visit to fabulous Death Valley National Monument, California, where Furnace Creek Inn and Ranch—both under Fred Harvey management—offer a variety of accommodations at this renowned winter resort. All year, but especially during off-season (late fall through early spring), Arizona's famous Grand Canyon National Park (South Rim) offers fascinating activities and the Fred Harvey accommodations, such as El Tovar Hotel, Bright Angel Lodge, the Grand Canyon Motor Lodge and Yavapai Lodge. Ask for illustrated folders.

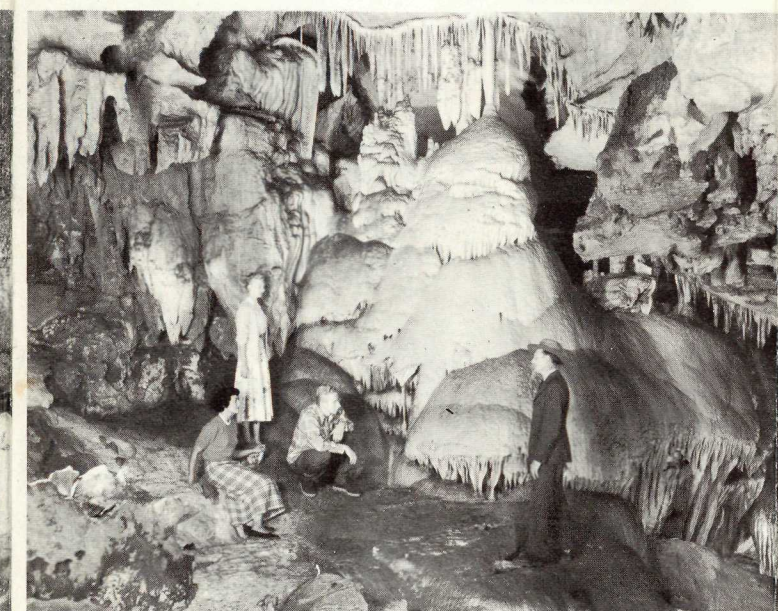


Travel and Ticket Agents: For more copies of this folder, write Fred Harvey, Inc., 80 E. Jackson Blvd., Chicago, Ill. 60604.

## Land of the Big Trees and Tall Mountains



Sequoia: Arch Rock on the Generals Highway



Sequoia: Crystal Cave



Kings Canyon: The Canyon from Bubbs Creek Trail



Sequoia: Sledding at Lodgepole



Sequoia: Campfire Entertainment at Giant Forest Lodge



Sequoia: Beginner's Rope Tow at Wolverton