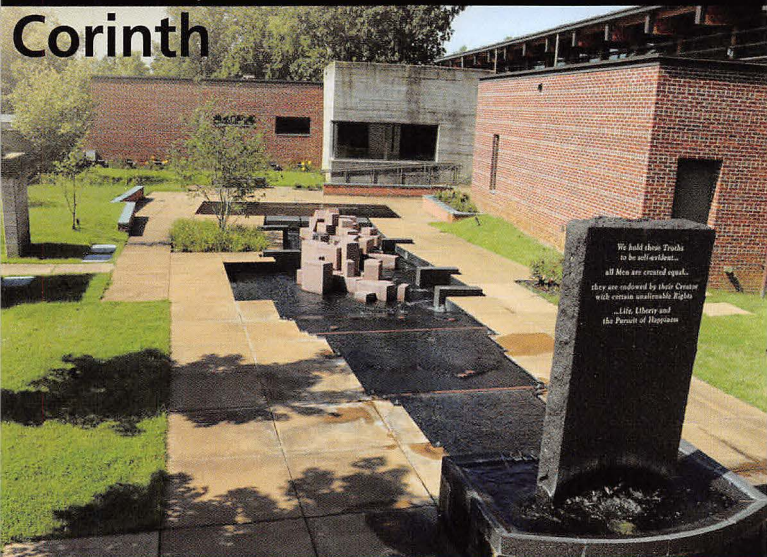


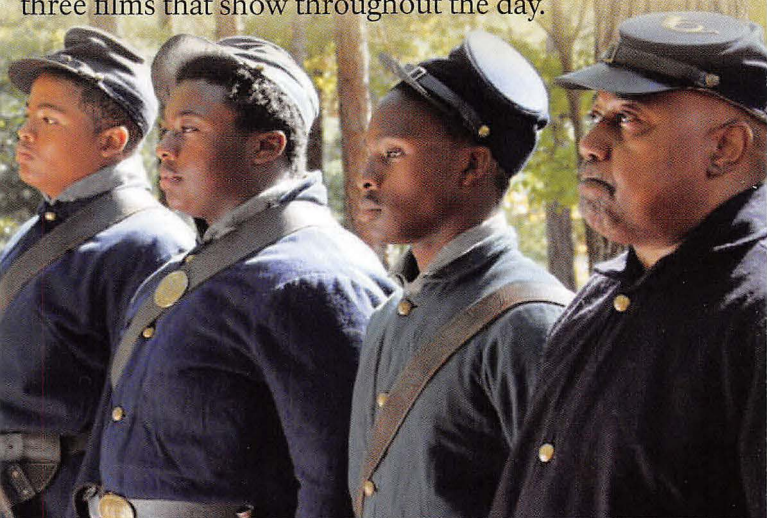


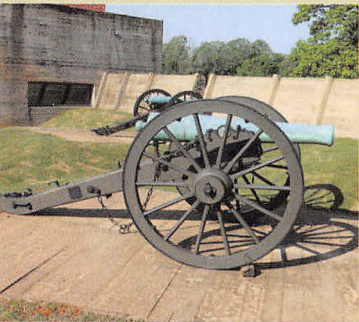
Corinth



For six months in 1862, Corinth, a critical railroad junction, captured the full attention of a divided nation. The Corinth Civil War Interpretive Center is near the site of Battery Robinett, scene of some of the heaviest fighting in the October 1862 battle.

Exhibits include interactive displays and multimedia presentations on the Battle of Shiloh and the Siege and Battle of Corinth, the Corinth Contraband Camp, and three films that show throughout the day.





Visitors reach the center by ascending a walkway strewn with “battlefield debris,” bronze replicas that reflect the aftermath of battle. At the building entrance, visitors pass six Civil War soldiers also cast in bronze, marching into the center at the double-quick.



Full-scale reproductions of earthworks explain the importance of field fortifications through the course of the Civil War.

The culminating interpretive feature is a commemorative courtyard where stone and flowing water chronicle the birth and growth of the United States, the accompanying rise of sectionalism, key events leading to the Civil War, and symbolic representation of four years of war. At the base of the courtyard, a reflecting pool offers a chance to contemplate the war’s meaning and significance. The Center also contains a research library and bookstore.

501 West Linden Street
Corinth, MS 38834

Open: 8:00-5:00 Daily
No Admission
(662)287-9273