

National Park Service  
US Department of the Interior



National Capital Parks–East  
Washington, DC

---

# **National Capital Parks–East**

## **Reimagine Anacostia Park A Concept Plan for Sections D and E**

### ***Public Comment Analysis Report***

September 2021

## PROJECT INTRODUCTION

The National Park Service (NPS) has begun the planning process for *Reimagine Anacostia Park, A Concept Plan for Sections D and E*. The overall purpose of this project is to provide a framework for future development and use of these sections of the park. The NPS is creating a plan to study the existing conditions and develop a set of recommendations for park improvements that will provide an enhanced visitor experience, while continuing to protect natural and cultural resources. The goal of the plan is to provide recommendations to revitalize recreational opportunities at the park in a way that builds off of the 2017 Management Plan for Anacostia Park. The NPS invited the public to participate in the planning process through an open public comment period and virtual public meeting. Below is a summary of the public participation outreach as well as a summary of public comments received during the open comment period.

## PUBLIC OUTREACH SUMMARY

On June 16, 2021, the NPS issued a press release and posted project information to the Planning, Environment, and Public Comment (PEPC) website. The press release and PEPC website provided a project overview and invited the public to participate in the planning process. Members of the public were invited to join a virtual public meeting (discussed below) and submit comments on the project electronically via PEPC or email, via voicemail through a toll-free phone number, or via mail. The press release and PEPC website included notification of the public comment period and provided notice of the public meeting. The public meeting presentation slides and video recording were posted on the PEPC website. See attachment A for a copy of the presentation slides. The public comment period was initially open from June 29, 2021, through July 29, 2021; the comment period was later extended through August 15, 2021.

A virtual public meeting was held on Tuesday, June 29, 2021, from 6:00 pm to 7:30 pm via Zoom. Attachment A includes the presentation given at this meeting. After the presentation, a Q&A session was held for members of the public to ask questions. A recording of the meeting was subsequently posted on the NPS website at: <https://www.nps.gov/media/video/view.htm?id=E4B61BF4-8725-4A77-B79A-EF21F8F47139>. A total of 139 individuals attended the virtual public meeting.

A total of 110 pieces of correspondence were received from the public, organizations, and other interested parties. The breakdown for how they were received is as follows:

- 90 of these were entered directly into PEPC
- 12 were received via email
- 6 were received via letter
- 2 were received via voicemail message

A piece of *correspondence* is considered the entire document received from a commenter. This includes letters, e-mails, comments entered directly into PEPC, voicemails, and any other written comments provided by postal mail. Those pieces of correspondence were reviewed and individual *comments* were distilled, which are individual ideas, issues, and suggestions that address a single subject within the correspondence. A summary of comments received is presented below.

## SUMMARY OF PUBLIC COMMENTS RECEIVED

Within the 110 pieces of correspondence, a total of 371 individual comments were identified. The comments received were considered and grouped by topic or category centered on a common subject. Developed from these categories are individual *concern statements* that summarize the issues, suggestions, and ideas identified within the categories. The following provides a brief summary of the comments received from the public during the open comment period, followed by the more detailed concern statements.

Overall, the public supported the vision and goals for the project as well as the revitalization of Anacostia Park and improvements to the facilities. Commenters expressed what they value in the park, such as the ability to experience nature while engaging in recreation opportunities. Additionally, responders expressed issues they have with the current conditions of the park, such as poor drainage and the lack of adequate restrooms. The public provided suggestions for ways to improve the park and specific facilities they would like to see created within the park. These included facilities for organized sports, for improved pedestrian and bicycle accommodations, and for general park facilities such as lighting and restrooms. Other ideas from responders included the creation of facilities and accommodations for community events and gathering spaces, as well as improved access to the Anacostia River. Commenters also provided recommendations for new access points into the park from the adjacent neighborhoods. Some comments were outside the scope of this project, but the NPS may take them into consideration as part of future planning. The concern statements developed from these comments are detailed below.

## CONCERN STATEMENTS

### Values

Commenters expressed how much they value the park as an asset to the local community and the greater DC Metro area. These values include the following:

- Many commenters expressed how much they value the skating pavilion and that there is a large skate community for whom the pavilion is an important social and recreational space. In particular, commenters value the uniqueness and accessibility for all people to enjoy as well as the opportunities for outdoor, shaded recreation that it provides for individuals and families.
- Commenters value the recreational aspects of the park such as the skating pavilion, the pool, the facilities for running and cycling, the open fields for team sports, and the playgrounds. Commenters value the open fields for organized sports as important facilities for the health of the local residents.
- Commenters value the park's history, particularly the African American history that has resulted in the park being a welcoming cultural place for African Americans in the adjacent neighborhoods.
- Commenters value the park's natural resources and the ability to connect to nature while engaging in recreational activities. Some commenters noted that they enjoy seeing wildlife such as foxes and turkeys while walking along the path, while others enjoy having views of the Anacostia River. Some commenters appreciate having nature-based educational offerings

- in the park. Commenters value the undeveloped, open greenspace of the park as an opportunity for fresh air and a natural environment within the city.
- Commenters value the local vendors and entrepreneurs who provide services and food within the park.
  - Commenters value the park as a neighborhood anchor with generations of people from neighborhoods east of the river using its amenities.
  - Some commenters value how the park is currently car-friendly and welcoming for commuters. These commenters valued the ability to hop off of I-295 after a busy work day and stop at the park to watch the sunset, listen to music, and enjoy time with their friends.

## Issues

Commenters expressed issues they have experienced or currently experience at the park in its existing condition. These issues fell into general topics related to park facilities, safety, access, the natural environment, and other issues. These are described below.

Issues related to park facilities:

- There are not enough public restrooms in the park, and the ones that are available are often closed or undermaintained.
- There is a lack of maintenance on park facilities. For example, the picnic pavilions are in poor shape, the walking path along the river has substantial grass encroaching along the edges, and the skating pavilion has drainage issues that lead to standing water.
- Existing facilities are not open frequently enough, have limited hours, and do not offer enough programming or classes. Examples of these facilities include the pool and the rec center. Additionally, the pool does not have lap lanes, and there are not enough picnic pavilions or grilling areas.
- There are not enough trash receptacles. After busy weekends, there is often trash left on benches and on the ground because trash cans are overflowing.

Issues related to safety within the park:

- The River Walk Trail is often crowded, leading to conflicts between pedestrians and cyclists. Additionally, there is a lack of enforcement to prevent people from using motorized vehicles on the trail and sidewalks.
- There is a lack of safe pedestrian access from downtown Anacostia into the park because the sidewalk on the northeast side of Good Hope Road ends abruptly, requiring pedestrians to walk along the street or cross without a crosswalk.
- Cars speed along Anacostia Drive, creating a safety issue for pedestrians and cyclists. Many cars use the road as a cut-through to other destinations.
- People experiencing homelessness camp on the park grounds, which is perceived as a safety concern.

Issues related to access into and throughout the park:

- There is a lack of quality access to the Anacostia River. There are undermaintained docks near the 11th Street Bridge, which are difficult to access, and the other boat ramp is farther to the north/northeast of the park. This leaves limited ways for park users to access the river for paddle sports (e.g., kayaking or stand up paddle boarding).

- Portions of the park are visually and physically cut off from the river due to Anacostia Drive and associated parking running right through the park.
- Parking is limited, particularly around the pool, pavilions, and restrooms where cars often park on the grass.
- The lack of bike share facilities in the park leads to car-dependent access.

Issues related to the natural environment of the park:

- There is sound pollution within the park from the adjacent highways.
- Rising sea level is of a concern for park users and the adjacent minority and low-income communities due to the proximity of the river.
- There are a substantial number of invasive plants along the river banks, wetlands, and within the wooded area bordering I-295.

Other issues expressed by commenters regarding the park:

- The condition of the park overall shows a lack of resources from the NPS dedicated to the park.
- Noise from activities in the park spills over into adjacent neighborhoods, as do parked vehicles when parking within the park is full.
- Because Anacostia is part of the national park system, it should not include facilities for use by single groups or exclusive activities; the park must be available for all people. Facilities such as formal sports fields should not be within a unit of the national park system.
- The new development at Poplar Point could spur additional development throughout Anacostia Park and could result in gentrification of the area. This plan should ensure that racial and environmental justice issues are addressed.

## **Vision Statement and Goals**

Commenters provided suggestions for revisions to the proposed vision statement for the project, including the following:

- Amend the vision statement to make a more explicit reference to the reality of climate change and the need for resiliency.
- Revise the vision statement so that the park's restoration efforts for a healthy riverine environment are a central part of the project.

Some commenters offered suggestions for ways to revise the draft goals for the project. These suggestions included the following:

- For the goal related to Access and Connectivity, the NPS should add more specific language to ensure that equitable access to the park to and from predominantly Black and minority neighborhoods east of the I-295 freeway, including Wards 7 and 8, be prioritized, based on the important social history of these neighborhoods' relationship to Anacostia Park.
- Add sustainability and resilience as additional goals of the project; though they are built into other goals, they should be primary drivers of the project.

## Concept Suggestions: Access and Connectivity

Commenters offered suggestions for ways to improve existing pedestrian access points into the park from adjacent communities. These suggestions included the following:

- Improve the safety of the pedestrian/bicycle bridge near the Anacostia High School into the park by widening it, adding lighting, and maintaining vegetation to limit overgrowth.
- Widen and make universally accessible the sidewalks and crosswalks along Good Hope Road SE and Nicholson Street into the park to improve access from local neighborhoods. Restrict vehicle access into the park in this area.
- Work with DDOT and CSX to renovate the 11th Street tunnel underpass by creating a continuous, accessible sidewalk and adding better lighting.
- Improve wayfinding signage into the park from adjacent neighborhoods for pedestrians.

Commenters offered suggestions for additional access points into the park from adjacent communities. These suggestions included the following:

- Add a new pedestrian/bicycle trail crossing under I-295 at the following locations: at the north side of Section E, at G Street SE, at S Street SE / Ridge Place S, and near Anacostia Drive south of the rail yard.
- Add trails connecting the park to Minnesota Avenue SE and to Massachusetts Avenue SE.
- Work with DDOT and CSX to develop the proposed Shepard Branch Trail along the abandoned CSX tracks, and create a connection to trails in the park.
- Provide public transportation to the park to provide access to people without the use of cars. For example, the NPS could work with DDOT to provide a shuttle into the park from adjacent neighborhoods, or the NPS could provide a ferry/water taxi connection from the park to the Navy Yard or Alexandria. An existing bus line could be routed into the park with stops at major destinations; bus stops should have benches.
- Add a pedestrian and bicycle connection between Anacostia Park and other recreation sites nearby such as the 11th Street Bridge Park, the Therapeutic Recreation Center, the Pope Branch Park, Fort Dupont Park, and the future Kenilworth park development.

Commenters offered suggestions for improving pedestrian and bicycle connections within the park. These suggestions included the following:

- Widen the River Walk Trail to improve safety for pedestrians and cyclists sharing the trail.
- Create a protected bicycle lane throughout the park separated from the River Walk Trail, and leave the River Walk Trail for pedestrians only.
- Add better bicycle safety markings and signage throughout the park, including along the River Walk Trail and Anacostia Drive.
- Paths within the park should only be for pedestrians and should be of a natural surface only with native plantings.
- Add sidewalks and curb cuts to all roads in the park, particularly in the loop around the skating pavilion that allows visitors to skate to the pavilion.
- Maintain the River Walk Trail to remove the encroaching, overgrown vegetation and prevent subsequent chokepoints.
- Add lighting for evening commuters cycling through the park.
- Add bicycle stands and bike repair areas at key locations such as access points.

Commenters provided suggestions for ways to improve safety of cyclists and pedestrians using and crossing Anacostia Drive, including the following:

- Restrict vehicle access on Anacostia Drive during certain hours to allow safer bike use on the road.
- Add speed bumps or rumble strips to the road to encourage slower driving speeds through the park to improve safety for pedestrians and cyclists. Increase enforcement of speed limits and parking areas. Add speed cameras along Anacostia Drive.
- Change Anacostia Drive to one way through the park, reduce the road to one lane, and create a separated bicycle lane or multiuse trail protected from the roadway.
- Add raised crosswalks across Anacostia Drive.

Commenters provided suggestions for improving access to park facilities for all visitors, including the following suggestions:

- Add more free parking areas near major destinations.
- Create walkable, well-lit spaces that are comfortable for intergenerational families, including children and seniors.
- Ensure park facilities are universally accessible, including access to the river. Add sensory play opportunities at playgrounds.
- At the River Walk trail ramps, remove the 2-inch lip to ensure the ramps meet ADA standards for accessible design.
- Add bicycle racks and dockless corrals for electric scooters within the park at major destinations such as the Anacostia Field House, the pool, the skating pavilion, and the education center. Provide wayfinding to these racks and corrals to encourage use.

One commenter noted that if more local residents use the park trails and are familiar with the available connections, the trails may be used as potential evacuation routes during an emergency, particularly if more connections are created.

### **Concept Suggestions: Active Recreation**

Commenters suggested adding new sports facilities within the park, such as:

- Add pickleball courts, or a complete racquet sports center
- Add a sand volleyball court.
- Add a disc golf course.
- Add bocce courts.
- Add a second, smaller skating pavilion for novice skaters to learn how to skate.
- Create fields with turf, lighting, and clear markings for football, soccer, kickball, softball, and flag football. Some fields could be convertible to accommodate multiple sports.
- Provide storage areas for youth sports organizations to store equipment within the park when the equipment is otherwise not provided by the NPS.

Commenters suggested adding new facilities within the park for other means of active recreation. These suggestions included the following:

- Add swimming/water play facilities for young children such as splash pads or zero entry pools. Add an indoor swimming pool for year-round swimming.
- Create an indoor walking track and exercise facility for working out in inclement weather.

- Add a calisthenic fitness area with parallel bars, pull-up bars, ropes, and gymnastics rings. Workout areas could be created along the River Walk Trail. Some areas should be designed and sited for people with disabilities and seniors.
- Create an area for adventure outdoor fitness such as a climbing wall, bouldering area, parkour area, ropes course, or zipline.
- Build a new playground, or add more equipment to the existing playground
- Add a skatepark, which would discourage skateboarding at the skate pavilion.
- Add a bike skills track/course or a bike pump track.
- Provide storage areas for adaptive cycling equipment and promote adaptive cycling with easy access from the parking lot to the trail.

Commenters offered suggestions for improvements to existing sports and active recreation facilities. These suggestions included the following:

- Regrading sports fields so they are generally flat but slightly crowned in the center for proper drainage as well as regular, predictable mowing of the grass to a length suitable for youth sports.
- At the existing tennis courts resurface the courts, add better lighting, add seating for spectators, add a shade pavilion, and add a pro shop.
- Resurface the basketball courts.
- Add lighting to all sports fields for evening play, which is particularly desired for local sports leagues.
- Maintain the playgrounds by fixing or replacing broken equipment; remove the pirate ship design. Improve hydrology of the playgrounds to address flooding.
- Work with local recreational organizations to bring more programming into the park, such as swimming, tennis, skating, and pickleball.
- Enlarge the swimming pool to a 50m pool with lap lanes.
- Install benches along the River Walk Trail.

### **Concept Suggestions: Community Fellowship**

Commenters suggested that the local history of the park be recognized in some way within the park, particularly as it relates to the Nacotchtank people, Bonus Army March, the Anacostia pool riot, the history of the Anacostia neighborhood, and other African-American stories. Commenters expressed how important this history is to their community and that these are important stories to tell through interpretive signage. Programming at the park should center on the current population of the adjacent neighborhoods and facilitate year-round activities. Educational programming regarding the area's historical and natural importance should be implemented. One commenter suggested hosting an "Anacostia Day" at the park to encourage more use of the park.

Specific suggestions related to community fellowship included the following:

- Add an amphitheater or other venue for performing arts. NPS should partner with local arts organizations and the Wolf Trap Foundation for support of this community space.
- Move the Bluegrass Festival from Kingman Island to this section of Anacostia Park.
- Add an area for community gardens and greenhouses with soilless systems to grow food and use as an educational tool. Small-business farms could be started at the park and the food could feed the residents of Wards 7 and 8.



- Add an open and maintained green space for community gatherings, group exercise classes, and collaborative art.
- Create space for public art displays in a variety of media for both local and national artists. Consider ways to use the Anacostia River for art and performance such as a light show. Commission local artists to create visual art on the walls of the skating pavilion.
- Create a space for local markets such as produce and fresh foods, arts, and other wares.
- Add more picnic pavilions, picnic tables, and grilling areas for community gatherings
- Group activities should be welcomed and promoted within the park such as group exercise classes, and skating groups.
- Operation of the skating pavilion could be turned over to a community organization, such as Our Family Skate Association, through a partnership with the NPS to ensure proper and culturally appropriate facilitation of programs and events.
- Construct a traffic garden for local children to learn how to safely navigate roadways.
- The NPS should coordinate plans for Anacostia Park with nearby parks and park management organizations, such as the 11th Street Bridge Park, Kingman Island, and Heritage Island.

### **Concept Suggestions: Waterfront Activation**

Commenters provided suggestions related to the natural environment along the river banks, including ways to integrate educational opportunities related to the river, such as:

- Daylight streams and sewer outfalls throughout the area that discharge into the Anacostia River. Suggestions included Pope Branch, Stickfoot Branch, St. Stanton Tributary, Ft. Davis Tributary, and Texas Avenue Tributary. Plant shade trees on both sides of the streams for hiking and picnicking.
- Remove invasive species along the seawall
- Remove all or parts of the seawall and replace it with a living shoreline or floating wetlands with native riparian plantings for habitat creation. Integrate educational signage related to the biological diversity and consequences of human activity.
- Create a natural riparian buffer and increase the tree canopy in the area between the river and the River Walk Trail and/or Anacostia Drive.
- Create new or revitalize the existing viewing platforms along the river and add educational signage. Educational signage could include information about local biodiversity as well as highlighting the fragility of the natural environment and consequences of human activity.
- Coordinate with the District in the ongoing remediation of the Anacostia River to improve the water quality, natural habitat, and educational opportunities.
- Create a native pollinator meadow near the Aquatic Resources Education Center, which could provide new educational opportunities there.

Commenters provided suggestions for ways the NPS could increase recreational use of the Anacostia River and integrate educational opportunities into the facilities. These suggestions include:

- Add new boating, kayak, and canoe access points along the river. Add canoe/kayak rentals but keep the price affordable. Educational signage related to wetlands and the river could be integrated into these points. The NPS could partner with local recreation organizations to implement recreational water programs like paddling and environmental education programs.
- Consider future swimming facilities, such as a beach, in the Anacostia River in the next 5-10 years, given progress made to bring the river up to health standards.

- Create dedicated fishing docks or other fishing areas along the river and coordinate with local fishing groups to host programming for kids and local residents.
- Construct a boardwalk or floating deck along the river for a semi-immersive outdoor recreational experience.
- Repair the seawall along the river that are crumbling or in otherwise poor condition.

### **Concept Suggestions: General**

Commenters offered suggestions for additional or improved park facilities, including the following:

- Add more benches and rest areas, particularly along the trail and at major destinations such as the pool and skating pavilion.
- Add more shaded areas through planting many canopy trees, particularly around the pool area, along the River Walk Trail, around the picnic areas, and around the sports fields. Add shade shelters such as pergolas. Add misters to cool down park users on hot days.
- Add more picnic pavilions and more grills that could be reserved or rented. Add accessible picnic areas close to the parking area.
- Add more restrooms, including accessible ones, with more frequent cleaning throughout the park.
- Add more trash receptacles, more frequent emptying, and more litter enforcement.
- Add water refill stations and water fountains; repair the existing broken water fountains.
- Add a carousel.
- Add a floating restaurant in the Anacostia River.
- Add a dog park.
- Add sound-absorbing panels or vegetation along I-295 where it borders the park to reduce noise pollution.
- Open the existing concession stand or construct a coffee shop in the park. Allow food trucks to operate in the park at peak hours, particularly by the pool and by the skating pavilion.
- Fertilize and reseed the grass to improve the greenery and remove the weeds. Add a chain-link fence around these greenery areas to keep people off the grass.
- Relocate the NACE headquarters to the north end of the park.

Commenters offered suggestions for ways the NPS could improve the sustainability and resiliency of the park and its facilities. Suggestions included the following:

- Improve stormwater management throughout the park, particularly using nature-based solutions such as floodable parks and restored wetlands that can absorb and store floodwater.
- Reduce amount of impervious surfaces in the park and expand the amount of greenspace to counter urban heat island effects.
- Reduce the amount of mowed grass and create more natural areas such as meadows and forested areas; add walking trails through these areas. Use more environmentally-friendly practices for landscaping. Collaborate with the National Arboretum to maintain this natural area. A specific suggestion included removing the fields west of the pool and restoring some wetlands in that area, as presented by DOEE as a blue sky idea.
- Add solar panels on the roof of the skating pavilion and other buildings in the park to meet some of the park's electricity needs. Manage water runoff from the roof in an environmentally-appropriate manner such as through a living roof; collect the rain water for use in flushing toilets.

- Locate new facilities on higher ground to mitigate potential future effects of flooding.

### **Public Engagement Process**

Some commenters expressed issues with the public engagement process and suggested ways to improve it. These suggestions included the following:

- Advertise the project and public comment periods in a more physical way throughout the park so more park users will know about it. The NPS could coordinate future outreach efforts with similar efforts for nearby parks such as the 11th Street Bridge Park and Kenilworth Park.
- Future comment periods should be 60 to 90 days long and avoid busy summer months and holidays to ensure the public is able to fully participate.
- A commenter noted that the planning process the NPS is undertaking for this project is unclear, and the PEPC website dedicated to that planning process is blank.

### **Out-of-Scope Comments**

Some concept suggestions were out of scope of this project, though the NPS may take them into consideration as part of future planning. These suggestions included the following:

- Renovate and update the skating pavilion, including resurfacing the interior, improving drainage issues, updating the sound system, and reliably opening the skate rental booth. Some commenters suggested renovating it for use as an ice-skating rink in the winter. One commenter suggested reducing the size of the skating facility to accommodate other recreational activities. Commenters suggested that the pavilion should be reserved only for roller skating and that other private group events, bikes, or motor scooters should not be allowed.
- Renovate and update the pool facilities, including improving maintenance of the showers and locker rooms. Commenters suggested adding lap lanes and expanding it to have an additional shallow section for children and families.
- Develop park facilities outside of the project area such as at Buzzard Point behind the Peninsula 88 condominiums.
- Improve vehicular and pedestrian connections and wayfinding outside of the NPS property, such as better signage along Pennsylvania Avenue SE on the west side of the Anacostia River and repairs to the pedestrian bridge over I-295.
- Work with CSX to remove or improve the railroad crossing.
- Improve water quality of the Anacostia River by capturing and treating stormwater runoff from the Pennsylvania Avenue and 11th Street Bridges before it enters the river.
- Create summer jobs for local youth.

**ATTACHMENT A  
PUBLIC MEETING PRESENTATION**

Anacostia Park



# REIMAGINE! ANACOSTIA PARK!

*A concept plan for Sections D and E*



**Public Informational Meeting**  
**June 29, 2021 6-7pm**



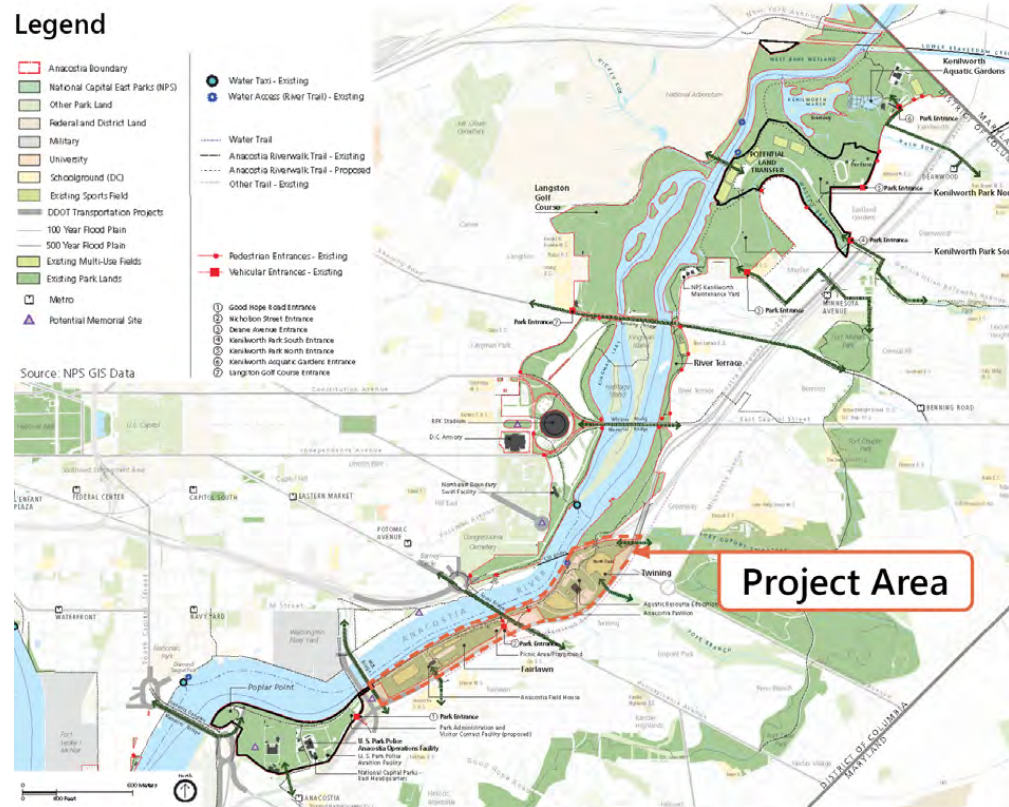
## Agenda

- Welcome + Introductions
- Project Background + Site History
- Vision + Goals for the Plan
- Planning Process + How to Comment

# Anacostia Park



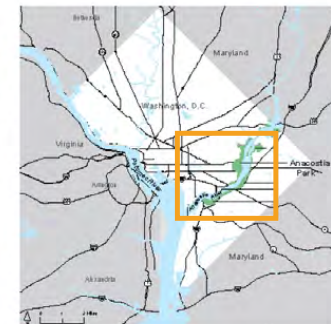
## Project Vicinity



National Park Service  
US Department of the Interior



Anacostia Park  
Washington, DC

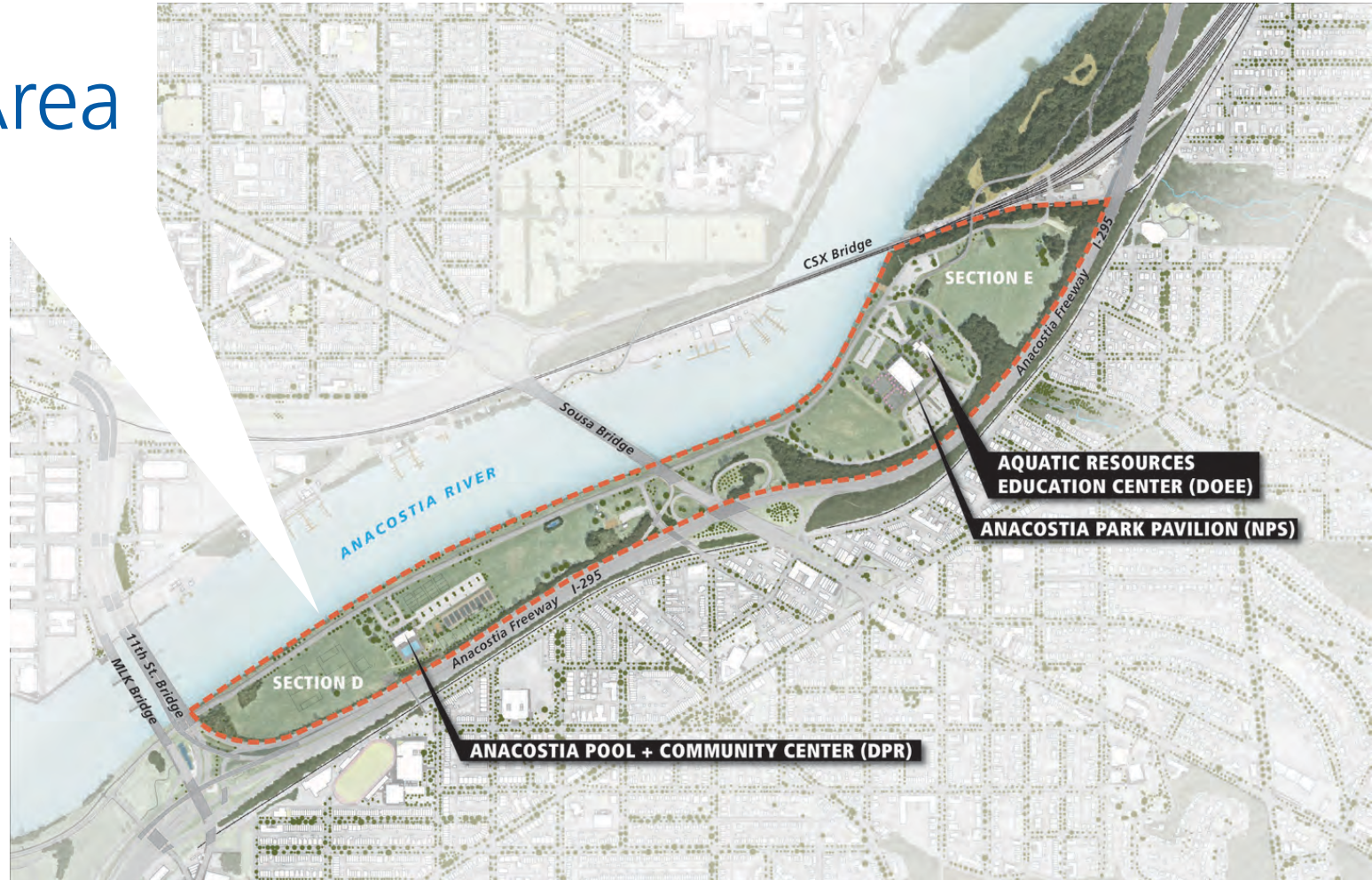




# Anacostia Park



## Project Area





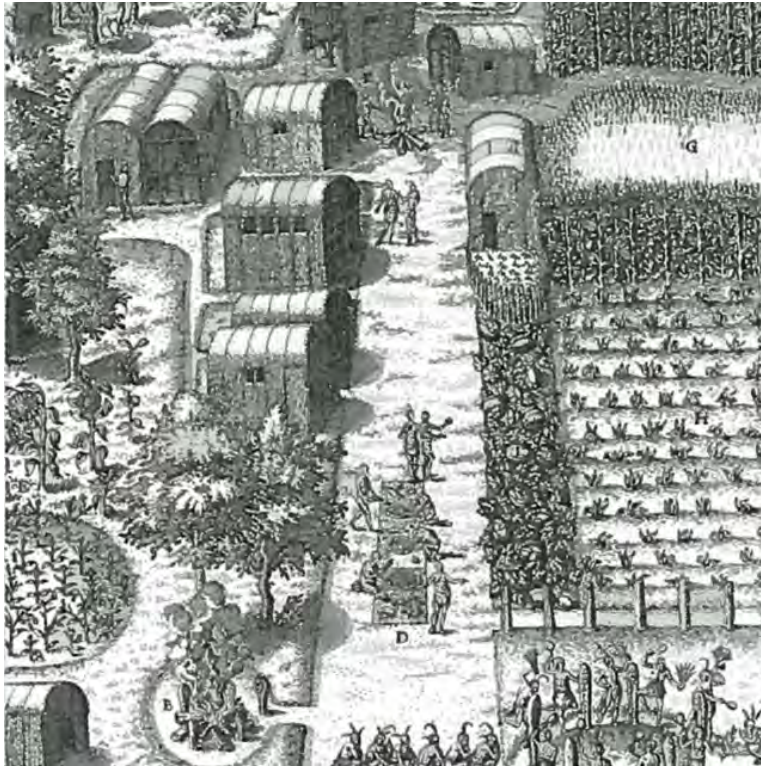
## Purpose of the Plan

- Provide a framework for future development and use of this section of the park
- Plan will consider existing issues and opportunities

Example of concept drawings from the Buzzard Point Concept Plan



## Site History :: Pre-Colonization



## Anacostia Park



## Site History :: 1880's Tidal Flats







## Site History :: Shoreline Migration

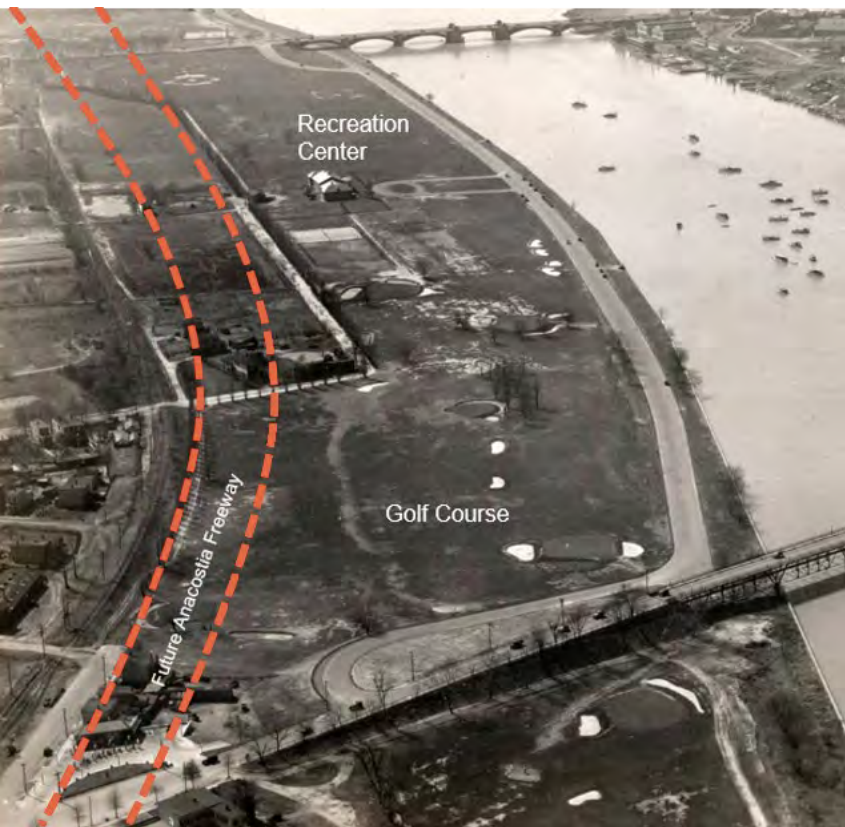




# Anacostia Park



## Site History :: 1933 Aerial view of Section D







# Anacostia Park



## Site History :: 1975 Bicentennial Era





# Anacostia Park



## Site History :: 1986 Aquatic Resources Education Center

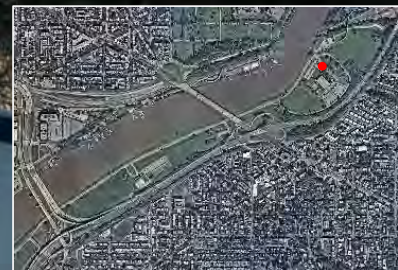




# Anacostia Park



## Site History :: 1990 Urban Tree House





# Anacostia Park



## Site History :: 2007 Anacostia River Trail

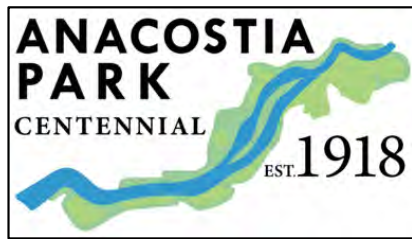




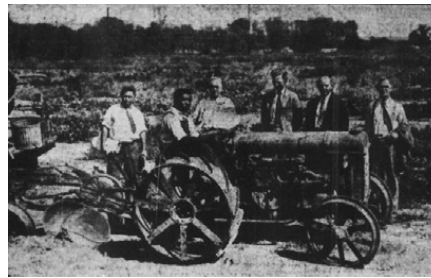
# Anacostia Park



## Social Influences



Named and established under an act of Congress in 1918.



Public Gardening 1920-30's



Segregated Playgrounds 1948



Anacostia Pool Riot 1949



SITP - 1968



SITP - Power of Music



# DRAFT Vision Statement

This reimagined portion of Anacostia Park welcomes and inspires a wide range of users while providing opportunities to connect with others and engage with the Anacostia River. The site's nationally significant natural, cultural, and recreational resources are part of daily life in Washington, DC and promote community wellbeing. The park is resilient, safe, and well-maintained, with strong connections to communities, partners, and the river ecosystem. Park users feel a sense of belonging and therefore value the park, engage in its programming and serve as active stewards of its future.



## DRAFT Project Goals



Access + Connectivity



Waterfront Activation



Community Fellowship

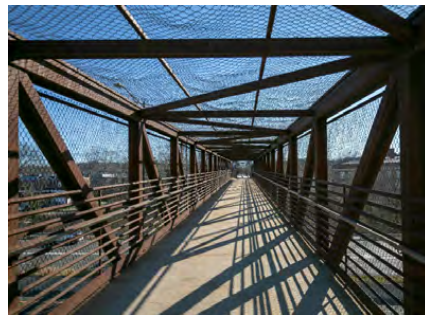


Active Recreation



## Access + Connectivity

Improve the safety, accessibility, and directness to the project area from neighboring communities, and within the park between activity nodes and park areas.







## Waterfront Activation

Enhance the visitor experience and connectivity to and from the Anacostia River by celebrating the site's history, ecology, and restoration efforts through educational and recreational opportunities.





## Community Fellowship

Improve opportunities for passive recreation focus on social, cultural, and community gathering spaces and hosting of events.







## Active Recreation

Restore and improve the active recreation fields and other organized sport amenities within the project area.





## Planning Process

Planning Phase	Timeline	Opportunity for Public Input
Publicize Vision and Goals for the Plan	Summer 2021	>>>We are here!<<< Provide your thoughts and ideas for the future of this portion of Anacostia Park.
Develop Concept Options	Fall 2021	
Publicize Concept Options	Early 2022	Provide your reactions to concepts developed for this portion of Anacostia Park
Review input and finalize the plan	Spring 2022	



## How to Comment

1. Submit comments electronically at:  
[https://parkplanning.nps.gov/Reimagine\\_AnacostiaPark](https://parkplanning.nps.gov/Reimagine_AnacostiaPark)  
via e-mail at: [ncr\\_planning@nps.gov](mailto:ncr_planning@nps.gov)
2. Call toll-free at:  
**1.888.345.2823**
3. Mail or hand-deliver written comments to the NPS at:  
National Capital Parks – East  
Superintendent  
Re: Reimagine Anacostia Park  
1900 Anacostia Drive SE  
Washington, DC 20020

Please provide  
comments by  
July 29, 2021.