



2020

National Park Service – National Trails

FY2020 SUPERINTENDENT'S ANNUAL REPORT

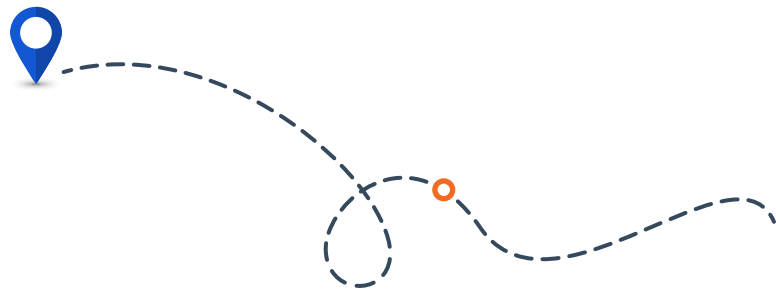




ROSI running through the Mojave Desert

Contents

Acronym List	4
Executive Summary of Fiscal Year 2020 Accomplishments	6
Administration and Staffing	9
Organization and Purpose	9
Budgets	10
Staffing Changes	11
Core Operations	12
Partnerships and Programs	12
Trail Studies and Planning	13
Trail Administration	14
California National Historic Trail (CALI)	14
El Camino Real de los Tejas National Historic Trail (ELTE)	16
El Camino Real de Tierra Adentro National Historic Trail (ELCA)	17
Mormon Pioneer National Historic Trail (MOPI)	19
Old Spanish National Historic Trail (OLSP)	20
Oregon National Historic Trail (OREG)	21
Pony Express National Historic Trail (POEX)	22
Santa Fe National Historic Trail (SAFE)	23
Trail of Tears National Historic Trail (TRTE)	24
Projects Affecting Multiple Trails	25
NHTs Project Summary	27
Trail Websites and Public Engagement	28
Volunteers-in-Parks (VIP) Program	30
Youth Projects	30
University-Based Partnerships	31
Geographic Information Systems	31
Resource Advocacy and Protection	32
Route 66 Corridor Preservation Program	34



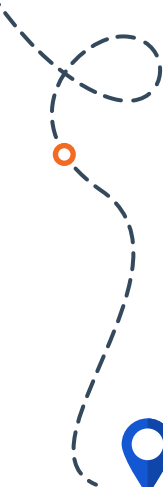


Acronym List

ACE	American Conservation Experience	HSR	Historic Structures Report
ASC	American Solar Challenge	IAA	Interagency Agreement
BLM	Bureau of Land Management	IMTA	Iowa Mormon Trails Association
CALI	California National Historic Trail	INAH	Instituto Nacional de Antropología e Historia (Mexico)
CALTRANS	California Department of Transportation	IRMA	Integrated Resource Management Applications
CBD	Conservation by Design	JUBA	Juan Bautista de Anza National Historic Trail
CESU	Cooperative Ecosystem Studies Unit	LDS	The Church of Jesus Christ of Latter-day Saints
CHAM	Chamizal National Memorial	MOA	Memorandum of Agreement
CLR	Cultural Landscape Report	MODOT	Missouri Department of Transportation
CTTP	Connect Trails to Parks	MOPI	Mormon Pioneer National Historic Trail
DCP	Developmental Concept Plan	MOU	Memorandum of Understanding
GES	Department of Geography and Environmental Studies (University of New Mexico)	MTSU CHP	Middle Tennessee State University Center for Historic Preservation
DIGIT	Digitally Integrated Geographic Information Technologies	MUTCD	Manual on Uniform Traffic Control Devices
DSC	Denver Service Center	NHD	National History Day
EIS	Environmental Impact Statement	NHT	National Historic Trail
ELCA	El Camino Real de Tierra Adentro National Historic Trail	NPEA	National Pony Express Association
ELCaT	El Camino Real de los Tejas National Historic Trail Association	NPS	National Park Service
ELTE	El Camino Real de los Tejas National Historic Trail	NTIR	National Park Service – National Trails (formerly National Trails Intermountain Region)
FERC	Federal Energy Regulatory Commission	NTSA	National Trails System Act
FHWA	Federal Highway Administration	NWR	National Wildlife Refuge
FOLS	Fort Larned National Historic Site	OCTA	Oregon-California Trails Association
FY	Fiscal Year	OLSP	Old Spanish National Historic Trail
GIS	Geographic Information Systems	ONPS	Operation of the National Park System
GTI	GTI Environmental, Inc.	OREG	Oregon National Historic Trail
HRA	Historical Research Associates, Inc.	OSTA	Old Spanish Trail Association
HPSS	High Potential Sites and Segments	PCS	Permanent Change of Station

PNTS	Partnership for the National Trails System	TRTE	Trail of Tears National Historic Trail
POEX	Pony Express National Historic Trail	UNM	University of New Mexico
RIM	Resource Information Management	UNM SA&P	University of New Mexico School of Architecture & Planning
ROSI	Route 66 Corridor Preservation Program	USACE	U.S. Army Corps of Engineers
SAAN	San Antonio Missions National Historical Park	USDA	United States Department of Agriculture
SAFE	Santa Fe National Historic Trail	USFS	United States Forest Service
SCA	Student Conservation Association	VIP	Volunteers-in-Parks (NPS program)
SFTA	Santa Fe Trail Association	WASO	Washington, D.C. office of the National Park Service
SOI	Secretary of the Interior	WCU	Western Carolina University
SWBRPP	Southwest Border Resource Protection Program		
TAMU	Texas A&M University, College Station		
TOTA	Trail of Tears Association		





Executive Summary of Fiscal Year 2020 Accomplishments

Sunset sagebrush along OREG

OCTOBER 1, 2019 – SEPTEMBER 30, 2020

2020 was challenging for many of us. The coronavirus pandemic forced a rapid shift to telework and paused travel plans indefinitely. In addition to adapting on the fly to a virtual office environment, we also welcomed many new staff members and interns who—in some cases—had to wait quite a while to meet their coworkers in person.



Yet despite these roadblocks, NTIR retained its same levels of productivity and partnership, and in many instances, even exceeded expectations. In FY20, staff completed in-house design for twenty-five wayside exhibits across TRTE, SAFE, ELTE, and CALI. Sixteen of those exhibits were fabricated and sent to partner sites within the same FY. The office also entered into seven new task agreements with seven different recipients for the purposes of trail development and interpretation for a total of sixteen active partner agreements.

Signing the NHTs remained an essential part of NTIR's work. Staff planned for and ordered road and pedestrian signs to mark the NHT historic route and crossing locations across twenty-one counties in twelve states in FY20. The office also came to an agreement with the FHWA on a new MUTCD-compliant standard template for NHT signs. NTIR shared these new sign standards with other NHT administrators and collaborated on how to standardize signing across the entire NHT system.

NTIR spent much of 2020 readying itself for special events to come. The ASC, a biannual event pitting solar-powered vehicles designed by various university teams against one another, remains a fixture of office operations. Planning efforts continued for the 2021 ASC along SAFE and the Trail's 2021 bicentennial. ACE Fellow Ashley Wheeler joined our staff to help coordinate and publicize the numerous bicentennial events taking place up and down the trail corridor.



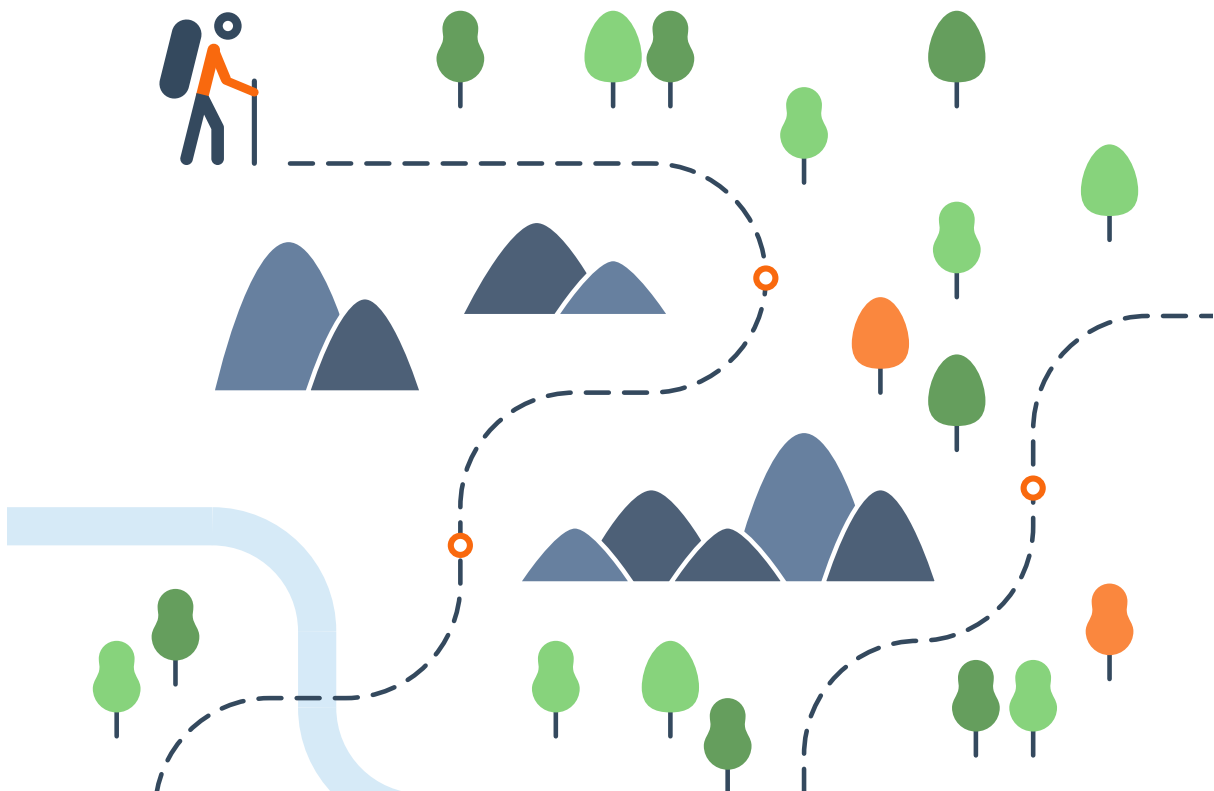
Working remotely was challenging, but it afforded time to improve some important workflows. Staff undertook a digitization project for all partnership certification files and added updated lists of certified partners to every NTIR website. Staff members continued their efforts to streamline the route refinement process and worked with several trail partners on refinement requests and potential partnership certifications along the various NHTs.

In FY20 the office improved its digital outreach, with many staff members contributing diverse and engaging content for social media pages and the NTIR website. NTIR's Digital Media Champion increased the office's visibility to the public. NTIR's Instagram account grew to 3,000 followers, an increase of over 100%. Facebook pages gained visibility, as well; for example, SAFE's followers increased by over 30%.

Staff participated in myriad activities to protect and preserve trails for future generations. NTIR hired a new Cultural Resources staff member to assist with external compliance actions. Consultation with BLM on the Gemini Solar Project in Nevada, along OLSP, entailed a field meeting with the SOI and BLM. The office collaborated with the DSC on the SAFE Foundation Document, which will guide management of the trail for many years. Staff members gave multiple presentations to SFTA on the new HPSS protocol, which will help the office identify a broader array of historic resources along the trail—a key responsibility entrusted to NTIR by the NTSA. The Pike NHT Feasibility Study, assigned to NTIR, was formally initiated in FY20. A study team formed within NTIR, and outreach, engagement, and historical research began.

Collaboration with UNM continued. The NTIR-UNM MOU renewal was signed July 13, 2020. After the second historic trails course concluded in December 2019, the third iteration—this one to be taught in the GES—will commence in Spring 2021. This course remains important in not only raising awareness of the NHTs, but also cultivating public history skills—research, accessible writing, and cooperation with public agencies and trail partners—among UNM students.

NTIR remains committed to safety. At each monthly meeting, a different employee gave a safety presentation on their topic of choice. As in previous years, FY20 saw a lack of work-related lost-time injuries.



SECTION TWO



Administration and Staffing

Scotts Bluff National Monument,
located along OREG in NE

NTIR administers nine NHTs and a historic corridor preservation program. In addition, it has been charged with undertaking two trail feasibility studies and one foundation document (which was undergoing final edits at the end of FY20).

ORGANIZATION AND PURPOSE

Staff in Santa Fe, NM, with branch offices in Salt Lake City, UT, and Albuquerque, NM, administer the following NHTs: CALI, ELCA, ELTE, MOPI, OLSP, OREG, POEX, SAFE, and TRTE. In addition, NTIR administers ROSI. ELCA and OLSP are co-administered with the BLM.



BUDGETS

In FY20, NTIR received \$3,617,000 in ONPS funding. In addition, the office received \$717,607.29 for planning, projects, and miscellaneous items. See Table 1 for funding details.

TABLE 1. NTIR Funding for FY20

Funding Source	Trail or Program	Received
ONPS	Santa Fe National Historic Trail	\$711,800
	Trail of Tears National Historic Trail	\$499,000
	Oregon National Historic Trail	\$445,500
	California National Historic Trail	\$350,500
	Route 66 Corridor Preservation Program	\$292,000
	El Camino Real de Tierra Adentro National Historic Trail	\$291,100
	Pony Express National Historic Trail	\$252,400
	Mormon Pioneer National Historic Trail	\$244,500
	Old Spanish National Historic Trail	\$245,500
	El Camino Real de los Tejas National Historic Trail	\$201,000
	Masau Trail	\$33,700
	Pay It Forward PCS \$ from FY19	\$50,000
	Total ONPS	\$3,617,000
Project Funding & Other Fund Sources	Volunteers-In-Parks (VIP) Funding	\$41,731
	Salt Lake City Office Expenses	\$7,200
	ELCA 1-mile interpretive retracement trail at Valle de Oro NWR (CTTP)	\$76,400
	Tuscumbia Landing Development, Phase 1 (CTTP)	\$20,000
	2020 ASC (CTTP)	\$76,400
	Broadening and Diversifying National Trails System Engagement (CTTP)	\$20,800
	SAFE Bicentennial Collaboration Intern (CTTP)	\$49,800
	Replace I-515375 2004 Dodge Caravan	\$26,170
	Replace I-512657 2009 Ford Escape	\$16,586
	Signing and Partnerships Intern (PNTS Grant)	\$20,367
	Bicentennial Intern (PNTS Grant)	\$10,002
	CALTRANS (MOA)	\$276,902.80
	Donations	\$12,248.49
	PCS Funding	\$10,000
	Additional Regional Support	\$53,000
	Total Project Funding & Other Fund Sources	\$717,607.29
	Total Funding From All Sources	\$4,334,607.29

STAFFING CHANGES

Aaron Mahr, superintendent
(on detail to SAAN, June 2020 – October 2020)

Carole Wendler, chief of interpretation
(on detail as deputy superintendent,
June 2020 – October 2020)

Cory Donnelly, landscape architect
(on detail as chief of interpretation,
July 2020 – October 2020)

Meg Frisbie, cultural resource specialist,
joined the staff in July 2020

Guy McClellan, historian, joined the staff in
November 2019

Nick Roll, interpretive specialist,
joined the staff in January 2020

Lillis Urban, chief of planning/feasibility
studies project manager,
joined the staff in July 2020 (term position)

INTERNS/FELLOWS/CONTRACTORS

Ashley Wheeler, ACE Fellow,
began work in May 2020

Emily Troil, SCA signing intern,
left the office in July 2020

David Bishop, photo database contractor,
began work in January 2020

SECTION THREE



Core Operations

Stagecoach stop along SAFE

PARTNERSHIPS AND PROGRAMS

With the exception of MOPI and ELCA, each NHT has a primary partner organization that actively works with NTIR staff to support trail-related research, interpretation, and development, as well as promoting public interest and heritage tourism. NTIR provides financial assistance to most of these organizations from its base ONPS funding. Table 2, below, identifies the financial assistance NTIR provided to trail organizations in FY20.

TABLE 2. NTIR Organizational Support for FY20

Partner Organization	Funding Provided
TOTA; for TRTE	\$149,135
SFTA; for SAFE	\$179,459
OCTA; for OREG and CALI	\$145,400
OSTA; for OLSP	\$89,600
EICaT; for ELTE	\$95,050
NPEA; for POEX	\$54,150
Total	\$712,794

TRAIL STUDIES AND PLANNING

NTIR oversees and coordinates, as assigned, Congressionally-directed NHT feasibility studies. In addition, NTIR collaborates with trail partner organizations to provide planning support and expertise, as needed.

KEY ACHIEVEMENTS:

- Revised Feasibility and Suitability Study for Additional Routes of OREG, MOPI, CALI, and POEX was transmitted to Congress in early 2020.
- A feasibility study for the proposed Pike NHT formally commenced in May 2020. A study team formed at NTIR, the members of which undertook outreach, engagement, and historical research. The study team digitized a draft route of Pike’s expedition and initiated Tribal outreach and collaboration.
- The Emancipation NHT Feasibility Study was assigned to NTIR for completion. NTIR formed a study team to complete the study, which will formally begin at the start of FY21.



“Journey West” sculpture, St. Joseph, MO

SECTION FOUR



Trail Administration

Chimney Rock National Historic Site, located along CALI, OREG, and MOPI in NE

CALIFORNIA NATIONAL HISTORIC TRAIL (CALI)

Congress authorized CALI in 1992. Spurred by James Marshall’s gold discovery in early 1848, the trail witnessed the passage of hundreds of thousands of westering emigrants during the 1840s, 1850s, and 1860s. The trail’s many routes followed a broad corridor (which narrowed as it headed west) from the Missouri River to southwestern Wyoming. Farther west, in Nevada, various routes split and led over various Sierra Nevada passes into California’s Central Valley. Along many portions of CALI – from the Missouri River all the way to California – the route is shared with MOPI, OREG, and POEX. For more information, visit the following website: <https://www.nps.gov/cali>.



Pedestrian signage at City of Rocks installed in 2020, located along CALI in southern ID.

KEY PARTNERS/COOPERATORS:

OCTA (see ‘Projects Affecting Multiple Trails’ for other key partners/collaborators).

KEY ACHIEVEMENTS:

- See ‘Projects Affecting Multiple Trails’ for details on FY20 accomplishments along CALI.

EL CAMINO REAL DE LOS TEJAS NATIONAL HISTORIC TRAIL (ELTE)

During the Spanish Colonial era, ELTE – authorized in 2004 – was a “royal road” that provided an overland route from Mexico and across the Río Grande to various missions, Tribal communities, and land grants across the Spanish province of Texas. It terminated at Los Adaes in what now is western Louisiana. For more information, visit the following website: www.nps.gov/elte.

KEY PARTNERS/COOPERATORS:

ElCaT, TAMU, SWBRPP, INAH, JUBA, and GTI.

KEY ACHIEVEMENTS:

- As part of the feasibility study for the proposed Pike NHT, NTIR received route data from contractor GTI regarding Zebulon Pike’s travels through TX along routes of ELTE.
- NTIR staff expanded digital content to enhance the ELTE website and finished the ‘Places’ section of the website, which provides practical information (directions, access issues, etc.) and historical background on historic sites along ELTE in both TX and LA.
- NTIR staff organized a Trails data-sharing virtual workshop with JUBA, INAH, and BLM, focusing on ways that partners can work towards common goals of sharing trail data across international, federal, state, and local agencies.



NTIR staff explore the Floresville Hike & Bike Trail with executive director of ElCaT, Steven Gonzales.

- In January 2020, NTIR staff traveled ELTE with Steven Gonzales, executive director of ElCaT, as well as contractors from 106Group, to generate familiarity with these specific trail resources.
- Work continued on a CESU project researching the indigenous presence along ELTE, headed by Dr. Armando Alonzo of TAMU. The final narrative will be shared with trail partners in the US and Mexico to support current and future trail initiatives. SWBRPP provided funding for this project.

EL CAMINO REAL DE TIERRA ADENTRO NATIONAL HISTORIC TRAIL (ELCA)

One of the oldest roads in the US, ELCA was authorized as a NHT in 2000. It is a timeless route of trade and cultural exchange among Spaniards and other Europeans, American Indians, Mexicans, Blacks, and Americans. This internationally significant trail is co-administered by BLM and NPS. For more information, visit the following website: www.nps.gov/elca.

KEY PARTNERS/COOPERATORS:

BLM, CHAM, Bernalillo County, City of Albuquerque, UNM, MRWM Landscape Architects, CBD, Valle de Oro NWR, NHD, El Paso County, PaleoWest Archeology, and SWBRPP.

KEY ACHIEVEMENTS:

- Working with the NPS Cultural Resources Office of Interpretation and Education, NTIR staff revised and converted the ELCA Discover our Shared Heritage Travel Itinerary to a new website format. The final Spanish translation will be incorporated into a new NPS Spanish website that will allow users to seamlessly switch between the two sites.
- NTIR staff provided assistance to CHAM on the CTTP ethnographic project, which will provide rich historical detail about the names, places, and events that shaped the



Tomé Hill, Las Lunas, NM. Located along ELCA, this landmark has served travelers for centuries.

southern end of ELCA. Work commenced on acquiring oral histories and published and nonpublished documentation of the American Indian and native Mexican association with the trail.

- NTIR staff provided review of the draft exhibit proposal developed by CHAM's SCA interns. A CTTP project, this permanent exhibit will interpret the diverse, binational history of ELCA in the Paso del Norte region, which includes present-day Ciudad Juárez, Chihuahua, MX; El Paso County, TX; and other small settlements in the vicinity.



Staff, partners, and contractors on a site visit for the ELCA interpretive plan at El Rancho de las Golondrinas, Santa Fe, NM.

- NTIR staff assisted contractor CBD in planning for and participation in workshops and site visits for the binational, interagency interpretive planning project. Staff also provided review of deliverables to ensure historical accuracy and cultural sensitivity.
- NTIR staff revised banner text and main historic essays for the ELCA website to ensure historical accuracy and cultural sensitivity. Staff also produced new social media and web content, including essays on Comanche horsemanship, the Mexican American War, and sheep farming in New Mexico.
- NTIR staff participated in several pre- and post-contract meetings with partners and contractor (MRWM Landscape

Architects) for the DCP, which focuses on the camino in Bernalillo County, NM. Staff also provided review and assistance in dissemination of interim deliverables to trail advocates along the entirety of the trail. In addition to Bernalillo County, key partners include the City of Albuquerque and UNM.

- NTIR entered into an IAA with Valle de Oro NWR to obligate CTPP funds and held a project kick-off meeting to establish project goals, including development of wayside exhibits, a trail-themed silhouette, and trail signage.
- NTIR ACE fellow and staff provided ELCA, OLSP, and SAFE content and resources for students and teachers for NHD 2020-2021. In keeping with the theme of “communication,” NTIR provided project examples, questions, primary sources, and digital archives. Materials can be found [here](#).
- NTIR staff participated in the kick-off meeting with contractor PaleoWest Archeology and El Paso County. The contractor began researching and drafting content for Phase 2 of the Oñate Crossing HSR/CLR. SWBRPP and El Paso County provided funding for this project.

MORMON PIONEER NATIONAL HISTORIC TRAIL (MOPI)

MOPI, which Congress authorized in 1978, commemorates those Church of Jesus Christ of Latter-day Saints who left Nauvoo, IL, in 1846 and continued on to the Great Salt Lake Valley the following year. Along many portions of the trail – from the Missouri River all the way to Utah – the trail is shared with CALI, OREG, and POEX. For more information, visit the following website: www.nps.gov/mopi.

KEY PARTNERS/COOPERATORS:

IMTA, MTSU CHP, and LDS.



Interpretive signage at the Sand Hill Ruts, near Sutherland, NE, along MOPI.

KEY ACHIEVEMENTS:

- NTIR staff initiated a CESU agreement with the MTSU CHP to conduct a historic building inventory along MOPI from IL to central NE.
- NTIR entered into contract for ten low-profile wayside and orientation exhibits to be placed along MOPI in IA.



The historic Florence Mill, built in 1846 near Omaha, NE.

OLD SPANISH NATIONAL HISTORIC TRAIL (OLSP)

BLM and NPS jointly administer this historic trade route, which was active between Santa Fe and Los Angeles during the period from 1829 to 1848. Congress authorized OLSP in 2002. For more information, visit the following website:
www.nps.gov/olsp.

KEY PARTNERS/COOPERATORS:

OSTA, BLM, and NHD.

KEY ACHIEVEMENTS:

- In coordination with OSTA, NTIR staff planned and held a design charette for OLSP in the San Luis Valley, CO. Like other charettes, the trip included a public meeting where NTIR staff assessed interest in developing and interpreting OLSP in the San Luis Valley.
- NTIR staff worked with BLM's Utah State office to certify the Richfield Visitor Center, located in Richfield, UT.
- NTIR worked with trail co-administrator BLM to resolve adverse impacts to OLSP that will result from Gemini Solar Project in NV, and staff participated in a field meeting with the SOI and BLM.



Blanca Peak, San Luis Valley, CO. The North Branch of OLSP passed Blanca Peak (Navajo: Sinaajini), a landmark that remains much like it was during trail travel (1829-1848).



OLSP silhouettes, Richfield, UT

OREGON NATIONAL HISTORIC TRAIL (OREG)

Congress authorized OREG in 1978. This iconic trail, which runs between Missouri and Oregon, witnessed the passage of hundreds of thousands of westering emigrants during the 1840s, 1850s, and 1860s. Much of the route – from the Missouri River all the way to Idaho – is shared with CALI, MOPI, and POEX. For more information, visit the following website: www.nps.gov/oreg.

KEY PARTNERS/COOPERATORS:

OCTA, HRA, and LDS.

KEY ACHIEVEMENTS:

- NTIR completed a contract with HRA to produce a report on the Columbia River’s role in overland emigration along OREG. The final product, “Overlanders in the Columbia River Gorge, 1840 – 1870: A Narrative History,” was received in September 2020. The study can be found [here](#).
- NTIR entered into a contract with HRA for the “First Year in Oregon: 1840-1869” research project. This project will describe how overlanders survived their first year in Oregon and how the first-year experience evolved from 1840 to 1869.



The Columbia River as seen from Rowena Crest Viewpoint (Mosier, OR)

PONY EXPRESS NATIONAL HISTORIC TRAIL (POEX)

Congress authorized POEX in 1992. The route connects St. Joseph, MO, to Sacramento and San Francisco, CA. Along many portions of the trail – from the Missouri River all the way to California – the trail is shared with CALI, MOPI, and OREG. The Pony Express rider and his galloping horse have become one of the mythic icons of the American West. The Pony Express, as an enterprise, lasted just 19 months during 1860 and 1861, but its fame endures. Many Pony Express enthusiasts enjoy re-creating the thrill of this cross-country ride by participating in the annual re-ride along the route. For more information, visit the following website: www.nps.gov/poex.

KEY PARTNERS/COOPERATORS:

NPEA and LDS.

KEY ACHIEVEMENTS:

- NTIR’s GIS specialists presented to the National Trails System GIS Network concerning the Pony Express Re-Ride App including coordinating with our NPEA partner and updates to the web mapping application for future re-rides.



Newly installed highway signs along CALI and POEX as part of the CalTrans signing project.

SANTA FE NATIONAL HISTORIC TRAIL (SAFE)

Between 1821 and 1880, SAFE was primarily a commercial highway linking various Missouri River communities with New Mexico. Today, this trail contains a diverse array of urban and rural landscapes and enjoys the support of an active nonprofit partner. Congress authorized SAFE in 1987. Portions of the trail in eastern Kansas and western Missouri are shared with CALI and OREG, while in Santa Fe, SAFE meets ELCA and OLSF. For more information, visit the following website: www.nps.gov/safe.

KEY PARTNERS/COOPERATORS:

SFTA, DSC, FOLS, NHD, and UNM.

KEY ACHIEVEMENTS:

- NTIR adopted a new, partner-oriented protocol for designating HPSS under NTSA and initiated a pilot program with SFTA to assess its effectiveness and usability. Staff presented the protocol and some research resources during multiple virtual meetings with SFTA. This protocol will be applied to all trails in the future.
- After partnering with NTIR staff on design, SFTA volunteers installed a completed wayside at Ralph's Ruts—a High Potential Segment on SAFE—in August.
- NTIR staff collaborated with DSC in drafting the SAFE Foundation Document. SAFE is the first of NTIR's trails to get its own foundation document.



NTIR in collaboration with SFTA completed design of a wayside for Ralph's Ruts, a High Potential Segment on SAFE. SFTA members, shown here, installed it in August.

- NTIR completed the Spanish translation of the SAFE FOLS Bilingual Storymap in December 2019.
- NTIR staff revised SAFE essays on San Miguel del Vado, La Cueva, and Lanesfield School produced by students of the first two UNM trails classes. The essays were featured on the NTIR website for the SAFE bicentennial.
- NTIR GIS staff completed the internal SAFE Park Atlas. The Park Atlas is an interactive web mapping application allowing staff to view spatial data associated with SAFE, including the designated alignment, high potential sites, high potential segments, recreation locations, cultural resources, points of interest, and other data layers to develop project planning, or learn more about the trail and associated resources.



Aerial view of the ruts and newly constructed trail at Ivan Boyd Prairie, located along SAFE in Douglas County, KS

TRAIL OF TEARS NATIONAL HISTORIC TRAIL (TRTE)

In 1838, the US government forcibly removed more than 16,000 Cherokee Indian people from their homelands in Tennessee, Alabama, North Carolina, and Georgia, and resettled them in Indian Territory (now Oklahoma). TRTE recognizes the removal of the Cherokee and the paths that 17 Cherokee detachments followed westward. Today the trail encompasses over 5,000 miles of land and water routes, and traverses portions of nine states. TRTE was authorized in 1987. For more information, visit the following website: www.nps.gov/trte.

KEY PARTNERS/COOPERATORS:

TOTA, Cherokee Nation, WCU, MTSU CHP, and Algonquin Consultants, Inc.

KEY ACHIEVEMENTS:

- NTIR accepted the final report from WCU for an archival, remote sensing, and archeological investigation of Fort Cass and other TRTE encampments. This was a CESU project.
- NTIR received MTSU’s final report on transportation methods along TRTE, entitled “Rivers, Rails, & Roads Transportation Systems Used During the Cherokee Removal, 1837 – 1839.” This report is one of several deliverables outlined in the ongoing CESU agreement with MTSU.
- NTIR awarded the TRTE Tribal Association Study contract to Algonquin Consultants, Inc. The kickoff meeting was held on August 28.



A keelboat on the Mississippi River, c. 1832. Crafts like these were used to move people and goods along the “water route” of TRTE.

PROJECTS AFFECTING MULTIPLE TRAILS

KEY PARTNERS/COOPERATORS:

Trail associations, NHD, LDS, JUBA, INAH, and BLM.

KEY ACHIEVEMENTS:

- Provided content and resources for students and teachers for NHD 2020-2021. The theme was “communication.” Staff members provided primary sources relating to SAFE, ELCA, and OLSP.
- Finalized one charette document, detailing proposed design and interpretive concepts for St. Joseph, MO, along POEX and CALI.
- Signed a four-northern trails partnership certification agreement with LDS for Martin’s Cove, a Mormon Trail Site in Alcova, WY.
- Published the Revised Feasibility and Suitability Study for Additional Routes of OREG, MOPI, CALI, and POEX to the IRMA portal and ArcGIS Online. This allowed the public to view the spatial data for the routes that were determined eligible for addition to OREG, MOPI, CALI, and POEX.
- Completed sign plans and purchased twelve signs for Scott’s Bluff County, NE, and five signs for Morrill County, NE, to mark the historic route of CALI, MOPI, OREG, and POEX.
- Managed contract for eight low-profile wayside exhibits to be placed along SAFE, OREG, and CALI in KS. Locations include Shawnee Indian Mission State Historic Site, the Rice-Tremonti Home, and Pioneer Park in Westport. Additionally, one panel at Santa Fe Trail Park in Prairie Village and four panels at the Upper Independence Landing in Wayne City will be updated and redesigned as part of the project.
- Finalized task agreement with OCTA for a mapping workshop to be held in 2021. Workshop will cover the methods and applications used to map historic trails according to the Mapping Emigrant Trails manual. Also covered will be new GPS/GIS applications to standardize recording and newer technologies to identify historic trail trace.

- Dos Caminos Initiatives (ELTE and ELCA):
 - » In March 2020, NTIR superintendent and JUBA superintendent met with INAH leadership in Mexico City to discuss several trail initiatives, including the proposed binational historic trails interpretive workshop, tentatively scheduled for fall 2021. Attendees also discussed the next binational trail data sharing virtual meeting scheduled for December 2020.
 - » In preparation for the December meeting, staff participated in several planning meetings. Staff also prepared and sent INAH a document with the public data for the two caminos reales, and researched platform options for sharing both public and internal data for the trails across international, federal, state, and local agencies. The binational virtual meeting was held December 8, 2020.



SECTION FIVE

NHTs Project Summary

TABLE 3. New and Completed ONPS Base-Funded Projects (Contracts and Agreements), FY20

Trail(s)	Partner(s)	Project Description
MOPI	MTSU CHP	Inventory and Assessment of historic buildings related to 1846-47 Mormon emigration (new)
TRTE	WCU	Identify TRTE encampments through archival research, remote sensing, and archeological investigation (completed/closed 1/27/2020)
TRTE	Algonquin Consultants, Inc.	Data gathering for tribal association study (new)
OREG	HRA	"Overlanders in the Columbia River Gorge, 1840 – 1870: A Narrative History" (completed/closed 9/2020)
OREG	HRA	"First Year in Oregon" research project (new)
ELCA, SAFE	Maria Nemelka	Translation Review of ELCA Travel Itinerary and SAFE FOLS storymap (completed)
Proposed Pike NHT	GTI	Provide route information from the Rio Grande to Natchitoches, LA, for the proposed Pike NHT feasibility study (completed)
All Trails	Wellpage	Media filming services to provide video footage with synchronous ambient audio filmed along NHTs (new)
ROSI	Mead & Hunt	Re-survey and update historic Route 66 sites to assess rate of change/loss (new)



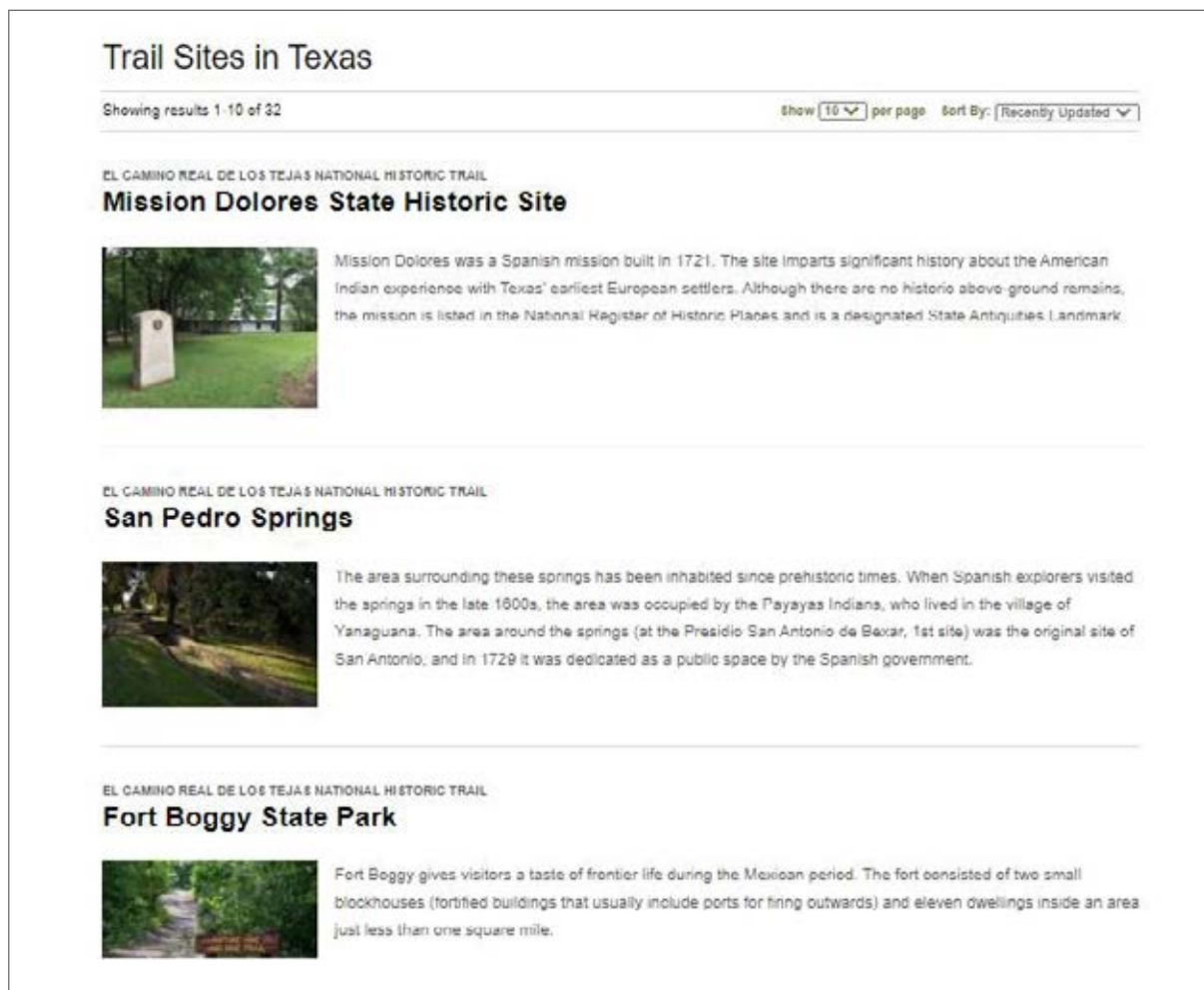
TRAIL WEBSITES AND PUBLIC ENGAGEMENT

Trails personnel currently manage ten websites: one for each of the nine NHTs that the office either administers or co-administers, plus the NTIR website.

KEY ACHIEVEMENTS:

- Posted on Instagram, Twitter and nine Facebook pages
- NTIR's Instagram account grew 104% in FY20 to over 2,850 followers


- NHT Facebook accounts increased by 33% to approximately 20,000 followers
- All NHT websites were updated this year, which included work done to the 'Places' pages, updating and adding sites in the 'Things to Do' page, and creating site assets for all nine trails pages




Trail Sites in Texas

Showing results 1-10 of 32 Show 10 per page Sort By: Recently Updated


EL CAMINO REAL DE LOS TEJAS NATIONAL HISTORIC TRAIL
Mission Dolores State Historic Site

 Mission Dolores was a Spanish mission built in 1721. The site imparts significant history about the American Indian experience with Texas' earliest European settlers. Although there are no historic above-ground remains, the mission is listed in the National Register of Historic Places and is a designated State Antiquities Landmark.

EL CAMINO REAL DE LOS TEJAS NATIONAL HISTORIC TRAIL
San Pedro Springs

 The area surrounding these springs has been inhabited since prehistoric times. When Spanish explorers visited the springs in the late 1600s, the area was occupied by the Payayas Indians, who lived in the village of Yanaguana. The area around the springs (at the Presidio San Antonio de Bexar, 1st site) was the original site of San Antonio, and in 1729 it was dedicated as a public space by the Spanish government.

EL CAMINO REAL DE LOS TEJAS NATIONAL HISTORIC TRAIL
Fort Boggy State Park

 Fort Boggy gives visitors a taste of frontier life during the Mexican period. The fort consisted of two small blockhouses (fortified buildings that usually include ports for firing outwards) and eleven dwellings inside an area just less than one square mile.

The completed 'Places' section of the NTIR's ELTE website.

TABLE 4. NPS – NTIR Website Statistics, FY20

NHT Websites	Page Views	Users (Visitors)	Number of Hours Spent on Website
CALI	111,601	51,594	3,216
ELCA	49,327	22,250	917
ELTE	71,025	26,387	832
MOPI	90,841	35,309	1,513
OLSP	44,332	16,777	467
OREG	236,627	102,450	3,785
POEX	146,601	64,353	2,088
SAFE	131,013	52,672	2,387
TRTE	313,567	144,940	4,785
Travel ROSI	91608	48960	1,809
Travel ELCA	897	234	9
NTIR	22,957	10,708	396
Total <i>(nine trails + ROSI + NTIR)</i>	1,310,396	576,634	22,204

TABLE 5. NTIR Social Media Statistics, as of Sept. 30, 2020

National Historic Trail Facebook Page	Number of Followers	Change in FY 2020	Number of Posts
CALI	338	+78	68
ELTE	768	+146	53
ELCA	938	+327	59
MOPI	1208	+ 567	36
OLSP	3218	+447	54
OREG	2271	+746	66
POEX	2509	+761	45
SAFE	4800	+793	68
TRTE	3510	+1268	72
Total	19,560	5,133	521

NTIR	Number of Followers	Change in FY 2020	Number of Posts	Number of Stories
Instagram	2,850	+1,450	60	60
Twitter	650	+100		

VOLUNTEERS-IN-PARKS (VIP) PROGRAM

Volunteers, most of whom work through NTIR's partnership associations, are the backbone of the NHT effort.

KEY ACHIEVEMENTS:

- During FY20, the various trail associations reported that volunteers devoted 220,204 hours of time on trail-related matters. This is the equivalent of more than 105 years of full-time volunteer work. Given an assumed hourly rate of \$27.20, that level of effort translated to a financial contribution to the trails of \$5,989,549. In addition, volunteers tendered \$489,057 in out-of-pocket (non-reimbursable) expenses on hotels, meals, and incidentals.
- In addition to their work effort and expenses, volunteers drove 571,005 miles on trails-related matters. Given the standard government reimbursement rate of \$0.56 per mile, volunteers spent \$319,763 on trails-related driving.
- The total financial impact of all NTIR volunteer-related activity totaled \$6,798,369. NTIR staff members are deeply thankful to the thousands of trail supporters who, year in and year out, make enormous strides in protecting, interpreting, and developing the NHTs.

YOUTH PROJECTS

- Completed 9 Junior Ranger Activity sheets for the NHTs NTIR administers and posted them to the NHT websites
- Young people across the country continued to earn Junior Ranger badges. See table below for the total number of badges earned during FY20, organized by trail:

TABLE 6. JR RANGER BADGES AWARDED, FY20

CALI	356
ELCA	185
ELTE	211
MOPI	228
OLSP	236
OREG	326
POEX	364
SAFE	147
TRTE	380
Total	2,433

UNIVERSITY-BASED PARTNERSHIPS

- As part of the Fall 2019 trails class at UNM (titled “Landscape and Memory”), students continued working on a SAFE website featuring historic sites on the trail as well as other trail projects.
- NTIR staff participated in several planning meetings with Dr. Maria Lane in preparation for the next iteration of the UNM trails course, offered by GES in spring 2021.
- NTIR staff attended the UNM Trails Advisory Committee meeting in January and presented trail updates, including the upcoming renewal of MOU with UNM, extension of Trails Course Development agreement, and trail initiatives at UNM.
- NTIR staff continued work on the CESU Shared Internship agreement with UNM’s History Department.
- NTIR staff participated in several planning meetings at UNM’s SA&P with members of the Bernalillo County/City of Albuquerque ELCA project to review, interview and select a firm for the DCP. Project partners selected MRWM Landscape Architects, which worked on the project for most of the FY. Work done by Francisco Uviña’s students at UNM SA&P on ELCA historic building surveys (part of previous CESU projects) played a foundational role.
- The NTIR-UNM MOU renewal was signed July 13, 2020.
- NTIR staff provided technical assistance to the students and principal investigator conducting the Digital Junior Ranger research and development project at Western Colorado University. Assistance included: bibliographical research, field trip and site visit coordination and facilitation, review of conceptual ideas and progress, and information about the national trails system (and the NPS junior ranger program in general).
- NTIR staff continued to oversee a multi-year CESU agreement with the University of Utah Department of Geography’s DIGIT Lab.

GEOGRAPHIC INFORMATION SYSTEMS

GIS is an integral part of trails programming, as its products are used routinely by in-house and independent researchers, program managers, cultural resource specialists, planners, interpreters, and the public.

The NTIR GIS program, operated by the staff on the RIM Team, oversees the development and ongoing maintenance of the GIS data for ROSI and nine NHTs. In addition to the in-house hours devoted by full-time NTIR staff, staff continues to work with the DIGIT Lab under a multiyear cooperative agreement established between the NPS and the University of Utah. The DIGIT Lab assists in the development of visitor use experience web maps for the nine NHTs. For this effort, the DIGIT Lab also serves a data mining role for recreational and interpretive locational data along the NHTs.

KEY ACHIEVEMENTS:

- Developed and implemented an application for the inventory of interpretive/directional signage assets for NTIR staff and all trail association partners to use for recording NHT assets. This included development of instructional documentation, videos, and storymaps. The NHT Asset application provided a new and exciting way for association partners to contribute to NTIR's mapping efforts.
- Assisted NPGallery staff in the development of the ROSI digital archive website (<https://npgallery.nps.gov/ROSI>). This involved creating metadata for more than 500 bridge images. This work is ongoing to add more property types to the archive.
- RIM team lead added as a Park GIS Representative to the NPS GIS Council.
- Provided support to the office's feasibility studies, including development of contracting Statements of Work, data management and data creation for draft routes, generation of approximate maps, review of contractor deliverables, and data quality reviews.
- Led a Section 508 Working Group to create and publish a Print Cartography technical guidance on accessibility for the entire NPS GIS community.

RESOURCE ADVOCACY AND PROTECTION

NTIR participated in 130 compliance reviews for external federal undertakings with potential to affect one or more of the nine NHTs administered by NTIR. These efforts entailed coordination across several regions and with WASO, as well as consultation with USFS, USACE, BLM, and others; consultation on the Gemini Solar Project in NV, for example, included a field meeting with the SOI and BLM. NTIR's role is to help the federal lead agency avoid, minimize, or mitigate adverse impacts and effects to the NHTs.

Many of the undertakings were energy development projects led by the BLM and/or FERC. Other external reviews of note include the following:

- NTIR continued to consult with the FHWA and MoDOT regarding a proposal to replace the I-229 double-decker Bridge on the Missouri River near downtown St. Joseph, MO. This undertaking had potential to affect CALI and POEX.
- In July 2020, Nebraska Public Power District was moving toward funding an \$80,000 archeological project on CALI/OREG/POEX at O'Fallon's Bluff, NE, and replacing an interpretive wayside exhibit on MOPI as mitigation for adverse effects that would result from construction of the R-project transmission line through Nebraska's Sand Hills. However, a federal judge revoked the project permit subsequent to a lawsuit filed by OCTA, local ranchers, and the Western

Nebraska Resources Council. The pending programmatic agreement that would lock in the agreed-upon mitigation measures was immediately dropped without signature. NTIR, a concurring party to the agreement, has received no updates on project status since the legal decision was announced.

- The Department of the Army intends to prepare an EIS to analyze the environmental impacts resulting from modernization of training activities and improvement of training facilities at the National Training Center at Fort Irwin, CA. OLSP crosses through the boundaries of Fort Irwin and there is one high potential site, Bitter Springs, within the project boundaries. Consulting party meetings begin in February 2021.
- The USDA Rural Utilities Service plans to construct a high-speed fiber-optic network within the Hanging Dog and Grape Creek communities in western NC. The project area intersects with the designated alignment of TRTE and associated buffer zones. The proposed archaeological work includes survey of the 17.3 miles of vibratory plowing, pad locations for the electronic cabinets, fiber vault locations, and bore entrance and exit pits. A survey strategy has been proposed and an archaeological contractor will be selected in January 2021.
- The FHWA, in cooperation with the North Carolina Department of Transportation, proposes to improve the mobility and reliability of NC 28, NC 143, and US 129 from the existing four-lane section in Stecoah to Robbinsville as part of

the Appalachian Development Highway System in Graham County, NC. The project intersects with the designated alignment of TRTE and updated trail data provided by Brett Riggs. NTIR is on the Cultural Resources Task Force for the project and signatory on the programmatic agreement, to be signed late February 2021.

- Infrastructure associated with the proposed Beclabito Hydroelectric Energy Storage facility in northeastern AZ and northwestern NM intersects with OLSP. Kinetic Power has received their formal notice from FERC for the authorization to proceed with resource evaluation. Once the project managers have more information on the engineering efforts, they will coordinate with NTIR.

TABLE 7. Compliance Reviews by Trail, FY20

Trail	Number of Compliance Reviews
ELCA	2
ELTE	4
CALI	18
CALI – MOPI	1
CALI – OREG	6
CALI – OREG – MOPI	1
CALI – POEX	4
CALI – MOPI – OREG – POEX	18
MOPI	2
OLS	33
OREG	15
POEX	10
SAFE	0
TRTE	16
Total	130

ROUTE 66 CORRIDOR PRESERVATION PROGRAM

Congress created ROSI to preserve and commemorate the special places and stories of the American icon, Route 66. The program works with the eight states through which the route passes to raise awareness about the history and significance of the route; identify preservation needs and strategies; and to facilitate collaboration among the states. The program provides technical and financial assistance to preserve the most significant and representative historic properties dating to the highway's period of historic significance (1926-1985). It also assists with preservation planning, research, and educational initiatives.

KEY COOPERATORS/PARTNERS:

Local, state, federal, and Tribal agencies, Route 66 associations, statewide preservation

organizations, educational institutions, State Historic Preservation Offices, departments of transportation, environmental protection agencies, the Route 66 Road Ahead Initiative, private individuals, and others.

KEY ACHIEVEMENTS:

- Provided support to the national non-profit organization, the Route 66 Road Ahead Partnership, via a cooperative agreement. This included ongoing work with Rutgers University to continue research of the economic impacts of historic preservation, organizational sustainability initiatives, facilitating a partnership with Research Route 66, and participation in board, executive committee, and Working Group meetings.



The historic Monterey Motel in Albuquerque, NM.

- Facilitated ongoing work to support Research Route 66, a coordinated, national program of Route 66 archives. Worked to address strategic plan priorities and update/renew MOU.
- Brought the Hispanic Legacies of Route 66 StoryMap to final review phase.
- Completed HSR for the Ribbon Road in Miami, OK, via a cooperative agreement with Ottawa County.
- Oversaw completion of four cost-share grants; continued monitoring of six additional ongoing grants.
- Oversaw contractor who revised and finalized a Bridgeport Hill-Hydro National Register Addendum to elevate the Bridgeport Bridge's significance from local to national, which was accepted by the Keeper of the National Register.
- Awarded competitive contract to re-survey and update historic ROSI sites to assess rate of change/loss.
- Participated in 15 Section 106 consultation projects.
- Worked with GIS team, State Historic Preservation Offices, and ROSI partners to review, update, and verify data accuracy of road alignments in multiple states.
- Provided ongoing technical assistance and clearinghouse functions to ROSI stakeholders and the general public.
- Participated in ongoing mission-related presentations including the *NPS Connected Conversation: Tribal Tourism and NPS Conservation Webinar*.



The neon lights of the Hilltop Motel in Kingman, AZ.



Happy Trails