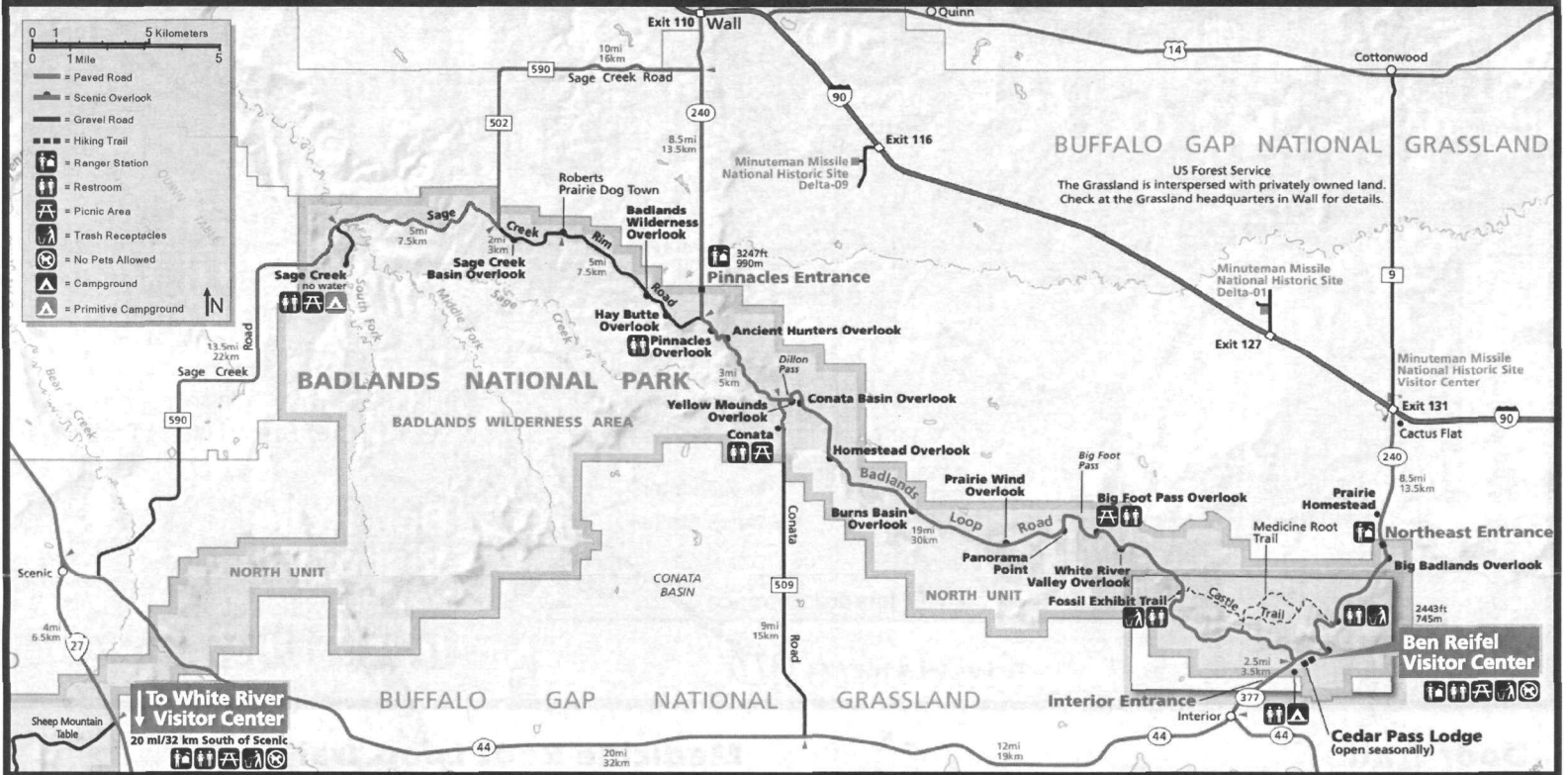


Badlands National Park



VISITOR CENTERS

Ben Reifel Visitor Center

Open year-round - Sunday through Saturday

Located in the Cedar Pass area, 8 miles from I-90 Exit 131 and approximately 20 miles from Exit 110.

Badlands Natural History Association, located inside the Ben Reifel Visitor Center, offers Passport books, postcards, stickers, T-shirts, books, and other Badlands merchandise.

White River Visitor Center

Open Seasonally

Located on the Pine Ridge Reservation off HWY 27 and BIA 2.

ACCESSIBILITY

The Ben Reifel and White River Visitor Centers are wheelchair accessible. Accessible trails include Door, Window, and Fossil Exhibit Trails. Cedar Pass Lodge dining room and giftshop are accessible, along with campground bathrooms. Accessible campsites are available.

PETS

Pets are **NOT** permitted in facilities, on or off trails, in the Wilderness Area, or in any backcountry area. Pets **MUST** be leashed when in designated areas. Be a responsible pet owner and pick up after your pet, do not leave pets unattended in hot vehicles, and be courteous to other visitors.

Service animals are an exception to most pet restrictions but must be leashed. **Emotional Support Animals** DO NOT qualify as service animals under ADA guidelines.

FOOD, LODGING, AND CAMPING

Cedar Pass Lodge and Campground

Open seasonally

Located near Ben Reifel Visitor Center, Cedar Pass Lodge is the only restaurant and lodging inside the park offering cabins, electric hook-up campsites, and non-electric sites. Summer amenities include cold running water, coin operated showers, flush toilets, covered picnic tables, and trash containers. Winter amenities are limited to vault toilets, covered picnic tables, and trash containers. An RV dump station is available with a per use fee. **NO open campfires.**

www.CedarPassLodge.com

605-433-5460

20681 HWY 240

Interior, SD 57750

Sage Creek Campground

Open year-round

Located in the Wilderness Area. Amenities include vault toilets, covered picnic tables, and trash containers. No water available. No camping fees or reservations. First-come, first-served. 14-day limit. No vehicles greater than 18 feet. **NO open campfires.**

Backcountry Camping

No permit required. Campsite must be 0.5 miles from any road or trail and campers must not be visible to other visitors. **Practice Leave No Trace Principles. No open campfires.**

Picnic Areas

Located at Big Foot Pass Overlook, Conata Picnic Area, and both White River and Ben Reifel Visitor Centers.

KNOW THE PARK RULES

Illegal Activity in a National Park is a Federal Offense - Please Report Unusual Activity to Park Staff

DO NOT Approach Wildlife - Stay a Minimum Distance of 100 Feet Away

NO Off-Roading, Drone Use, Hunting, or Collecting, Moving, or Removing Fossils, Rocks, Artifacts, or Plants

