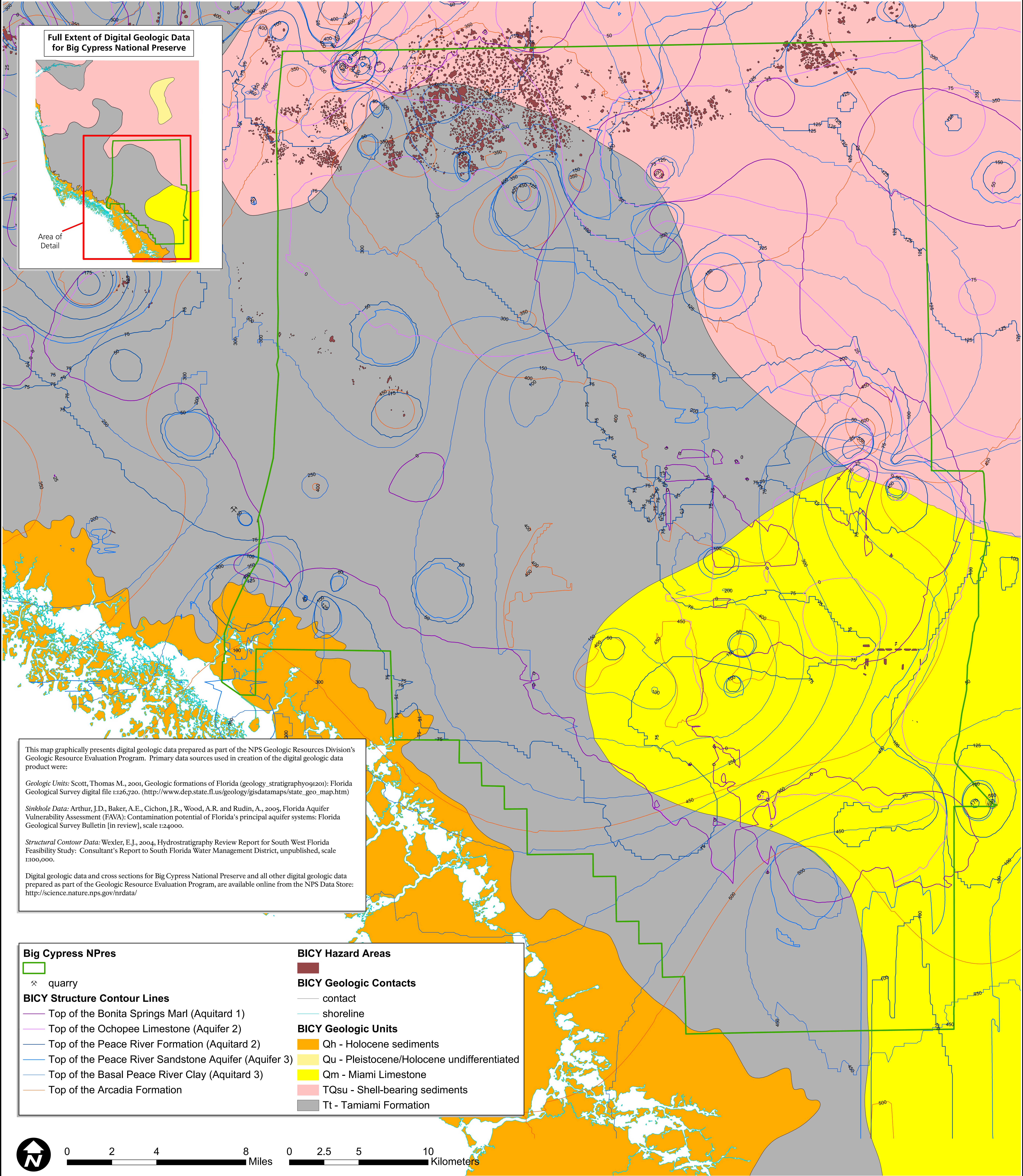
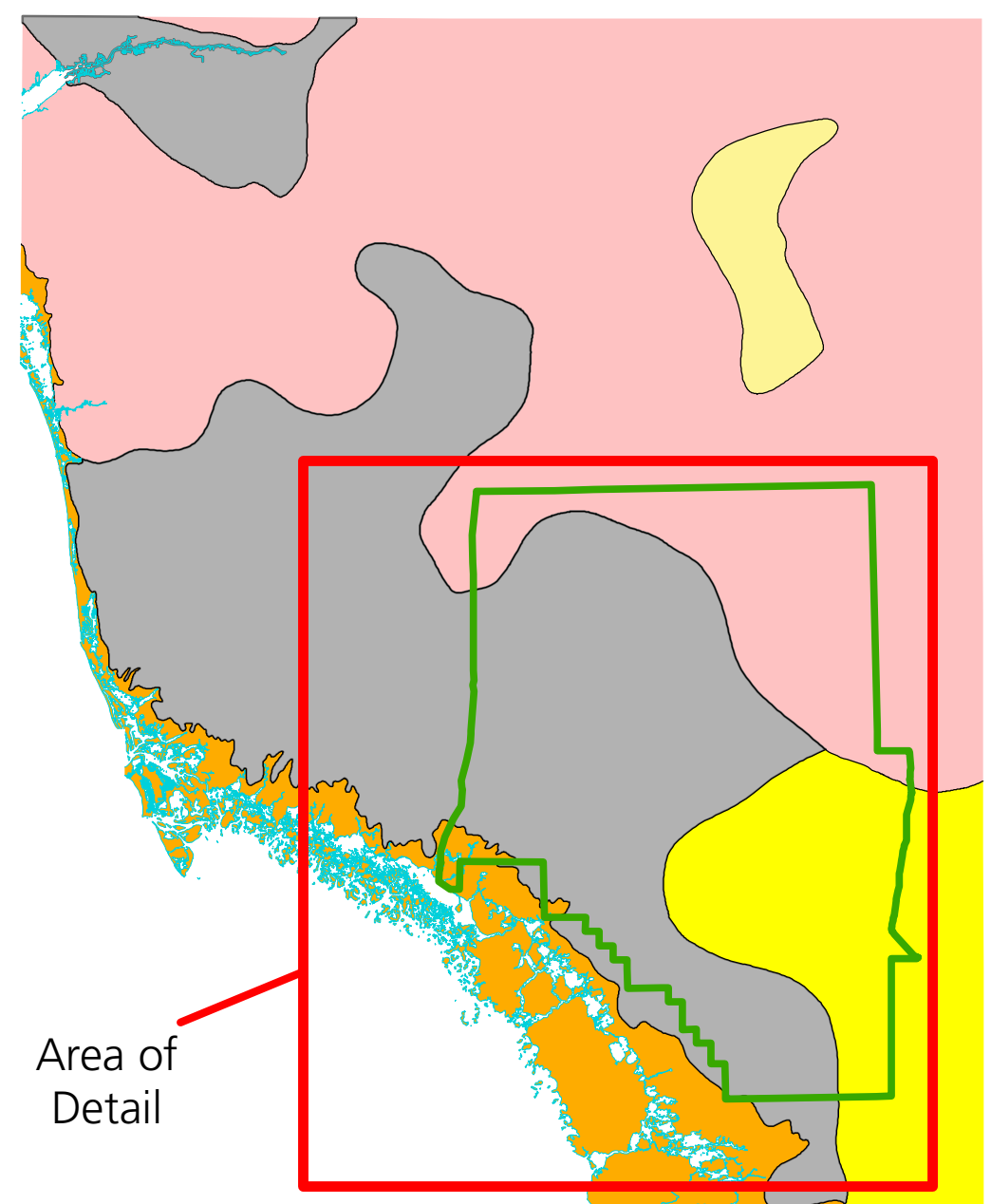




# Geologic Map of Big Cypress N Pres



Full Extent of Digital Geologic Data  
for Big Cypress National Preserve



This map graphically presents digital geologic data prepared as part of the NPS Geologic Resources Division's Geologic Resource Evaluation Program. Primary data sources used in creation of the digital geologic data product were:

*Geologic Units:* Scott, Thomas M., 2001, Geologic formations of Florida (geology\_stratigraphy091201): Florida Geological Survey digital file 1:126,720. ([http://www.dep.state.fl.us/geology/gisdatamaps/state\\_geo\\_map.htm](http://www.dep.state.fl.us/geology/gisdatamaps/state_geo_map.htm))

*Sinkhole Data:* Arthur, J.D., Baker, A.E., Cichon, J.R., Wood, A.R. and Rudin, A., 2005, Florida Aquifer Vulnerability Assessment (FAVA): Contamination potential of Florida's principal aquifer systems: Florida Geological Survey Bulletin [in review], scale 1:24000.

*Structural Contour Data:* Wexler, E.J., 2004, Hydrostratigraphy Review Report for South West Florida Feasibility Study: Consultant's Report to South Florida Water Management District, unpublished, scale 1:100,000.

Digital geologic data and cross sections for Big Cypress National Preserve and all other digital geologic data prepared as part of the Geologic Resource Evaluation Program, are available online from the NPS Data Store: <http://science.nature.nps.gov/nrdata/>

- |  |  |
|--|--|
| <b>Big Cypress NPRES</b>                               | <b>BICY Hazard Areas</b>                   |
| ⊗ quarry   | <b>BICY Geologic Contacts</b>              |
| <b>BICY Structure Contour Lines</b>                    | — contact                                  |
| — Top of the Bonita Springs Marl (Aquitard 1)          | — shoreline                                |
| — Top of the Ochopee Limestone (Aquifer 2)             | <b>BICY Geologic Units</b>                 |
| — Top of the Peace River Formation (Aquitard 2)        | Qh - Holocene sediments                    |
| — Top of the Peace River Sandstone Aquifer (Aquifer 3) | Qu - Pleistocene/Holocene undifferentiated |
| — Top of the Basal Peace River Clay (Aquitard 3)       | Qm - Miami Limestone                       |
| — Top of the Arcadia Formation                         | TQsu - Shell-bearing sediments             |
|  | Tt - Tamiami Formation                     |

