

MOJAVE TRAILS NATIONAL MONUMENT



MARBLE MOUNTAINS TRILOBITE FOSSIL COLLECTION

Casual Collection of common invertebrate fossils is allowed in Mojave Trails National Monument, including the Marble Mountains, as defined under the Paleontological Resources Preservation Act of 2009 (PRPA).

- The term 'Casual Collection' means the collecting of a 'reasonable' amount of common invertebrate or common plant paleontological resources for non-commercial personal use.
- Casual Collection is considered surface collection of fossils exposed at the surface or through the use of non-powered hand tools resulting in only 'negligible' disturbance to the surface of the ground.
- Negligible disturbance allows for a ground disturbance of no greater than 1 sq. yard (1 m square).
- Collections that are made for research or will be cataloged into a museum collection do not fall under the definition of "Casual Collection" and require a Paleontological Resources Use Permit.

KNOW BEFORE YOU GO!

There are private lands located in and near the Marble Mountains. It is your responsibility to know where you are and avoid trespassing on private land. The best way to learn who owns private lands is to contact the county assessor.

GET INVOLVED!

The Marble Mountains are now part of the Mojave Trails National Monument. The BLM is developing a management plan for the national monument and you are encouraged to participate in the planning effort.

HELP US!

Report suspicious activity and resource crimes toll free: 888-233-6518

Call 911 for emergencies!

LEARN MORE:

Visit: www.blm.gov/programs/national-conservation-lands/california/mojave-trails-national-monument

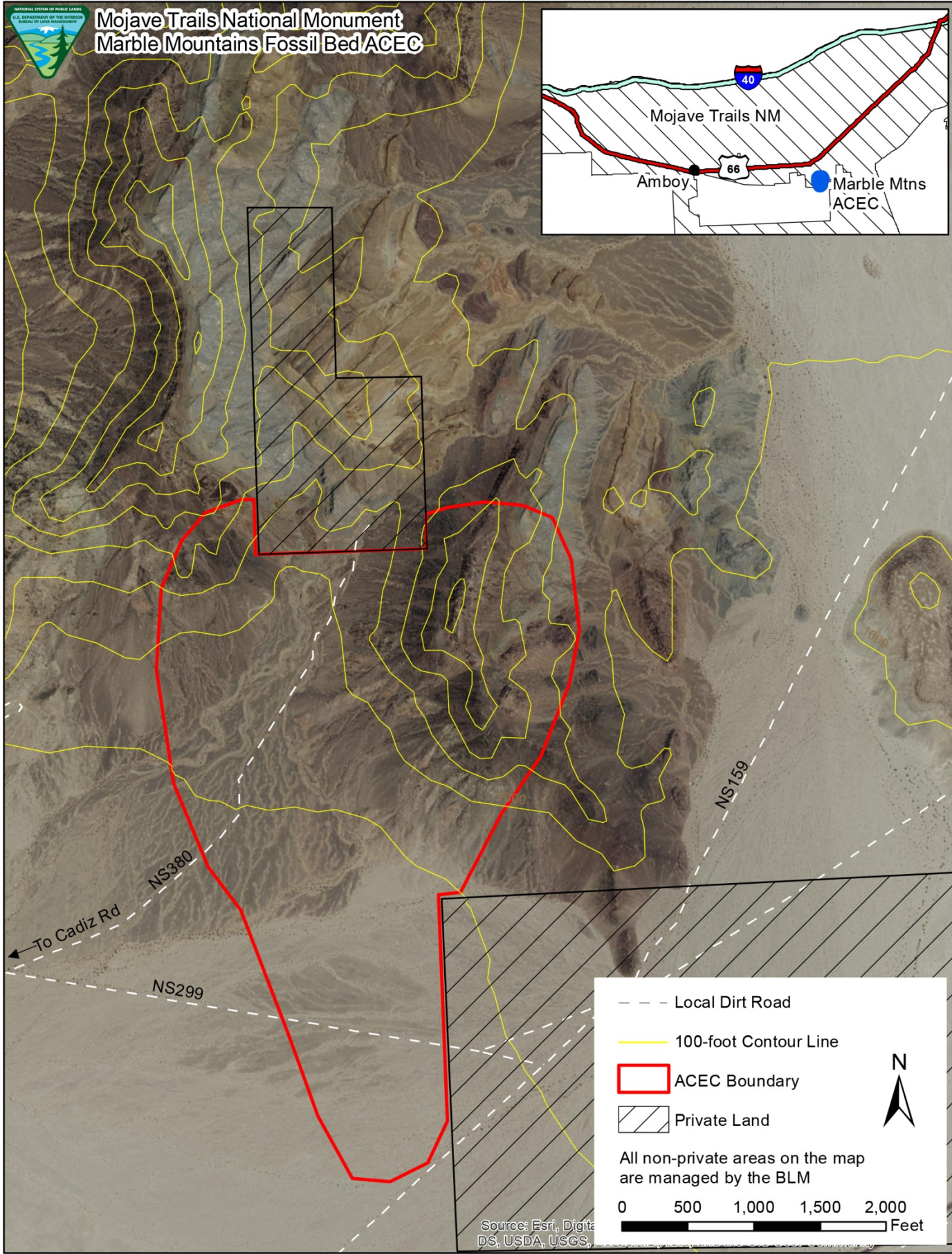
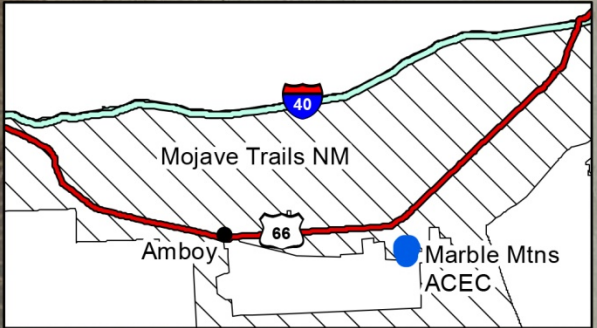
Contact us: Needles Field Office - 1303 S. Highway 95, Needles, CA 92363

Phone: (760) 326-7000

Email: BLM_CA_MojaveTrails@blm.gov



Mojave Trails National Monument Marble Mountains Fossil Bed ACEC



- - - Local Dirt Road
- 100-foot Contour Line
- ACEC Boundary
- Private Land

All non-private areas on the map are managed by the BLM

0 500 1,000 1,500 2,000 Feet

Source: Esri, Digital
Data, USDA, USGS,