

Santa Rosa &
San Jacinto Mountains
National Monument



Visitor
Center

THE SANTA ROSA & SAN JACINTO MOUNTAINS NATIONAL MONUMENT VISITOR CENTER

offers a wealth of information on the natural, cultural and recreational opportunities within the 272,000 acres of the newly designated National Monument.

Located at the gateway to the National Monument, the Visitor Center is a starting point for numerous trails and the scenic Palms to Pines Highway.

The Visitor Center offers information on hiking, camping, horseback riding, scenic overlooks and other outdoor adventures throughout the Santa Rosa & San Jacinto Mountains National Monument and the Colorado Desert.

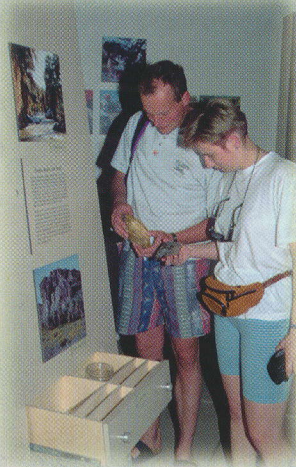


THE BOBCAT BOOKSTORE

sells hiking maps, guides, unique gift items and has an excellent selection of books on recreational opportunities as well as desert and cultural history.

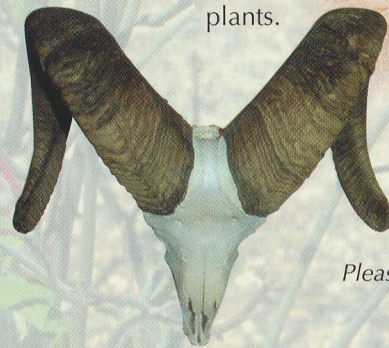
INTERACTIVE EXHIBITS

allow you to discover the rich natural and cultural heritage of the Coachella Valley and Santa Rosa & San Jacinto Mountains.



DESERT GARDEN TRAIL

The Ed Hasteley Desert Garden Interpretive Trail offers an educational walk through a garden of native desert plants.



FREE ADMISSION

Open 9 a.m. to 4 p.m.
7 Days a Week
Closed Federal Holidays
Please call for days of operation during summer months
Group Tours available by request

VOLUNTEERS

You can get involved with the Friends of the Desert Mountains. Lead educational hikes, work in the bookstore, greet visitors, join a habitat restoration team, or adopt an acre! Applications and membership information are available at the Visitor Center or call (760) 568-9918.



SAFETY INFORMATION & RULES

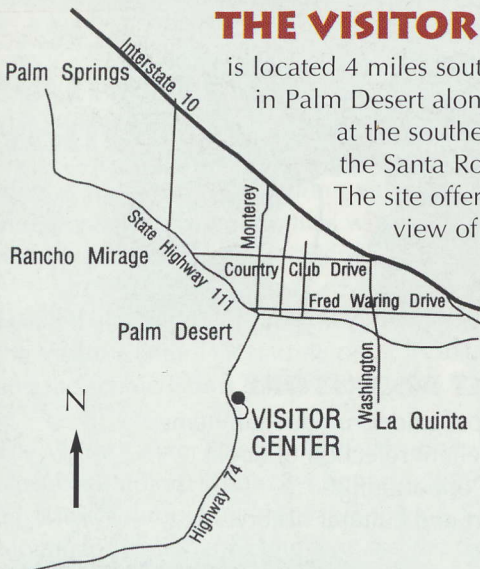
- Please no smoking, eating, drinking or pets inside the Visitor Center.
- Please do not disturb wildlife.
- Beware of cacti.
- Collecting historical or cultural objects on Federal Land is prohibited.
- Always carry plenty of water while hiking.
- Wear a hat and use sunscreen.

THE VISITOR CENTER

is located 4 miles south of Hwy. 111 in Palm Desert along Highway 74 at the southern entrance to the Santa Rosa Mountains.

The site offers a panoramic view of the Coachella

Valley and the rugged Santa Rosa Mountains.



MILEAGE TRAVEL GUIDE

<u>Visitor Center to:</u>	<u>Miles</u>
Palm Desert/Highway 111	4
Palm Springs	17
Vista Point	5
Cahuilla Tewanet scenic overlook ..	10
Highway 371 to Anza	20
Lake Hemet	34
Idyllwild	42
Indio	15

For more information, write or call:

SANTA ROSA & SAN JACINTO MOUNTAINS NATIONAL MONUMENT VISITOR CENTER

51-500 Highway 74, Palm Desert, CA 92260

Manager: 760-862-9984

Bookstore: 760-862-9084

BUREAU OF LAND MANAGEMENT PALM SPRINGS SOUTH COAST FIELD OFFICE

690 W. Garnet Ave., PO Box 1260

N. Palm Springs, CA 92258-1260

760-251-4800

www.ca.blm.gov/palmsprings



**FRIENDS OF THE
DESERT MOUNTAINS**

The printing of this brochure
is proudly sponsored by:



T H E R E S E R V E