



Old Lighthouse.

the water's edge, the light of which could more easily be seen beneath the clouds by ships at sea.

From the tower of this sandstone building, which was rehabilitated in 1935, visitors behold one of the great seascapes of the world: an inspiring scene comprising the ocean, bays, islands, mountains, foothills, valleys, and plains which surround the city of San Diego.

From the light tower can also be pointed out the locations of Ballast Point, where Cabrillo probably landed, and where Sebastian Vizcaino, who applied the name of San Diego to the bay, is generally believed to have held Holy Mass when he visited the bay in November 1602. On this spit of land, extending from Point Loma into San Diego Bay, was also situated Fort Guijarros, which served Spanish and Mexican California as a coastal defense. Today the site is occupied by one of the fortifications of the Fort Rosecrans Military Reservation.

How To Reach the Monument

Cabrillo National Monument is near the southern tip of Point Loma, that arm of land

forming the west side of San Diego Bay. It is 10 miles from downtown San Diego and can be reached by following Pacific Boulevard (U. S. 101) to the highway junction at the U. S. Marine Corps Base, from which a well-marked road leads to the monument.

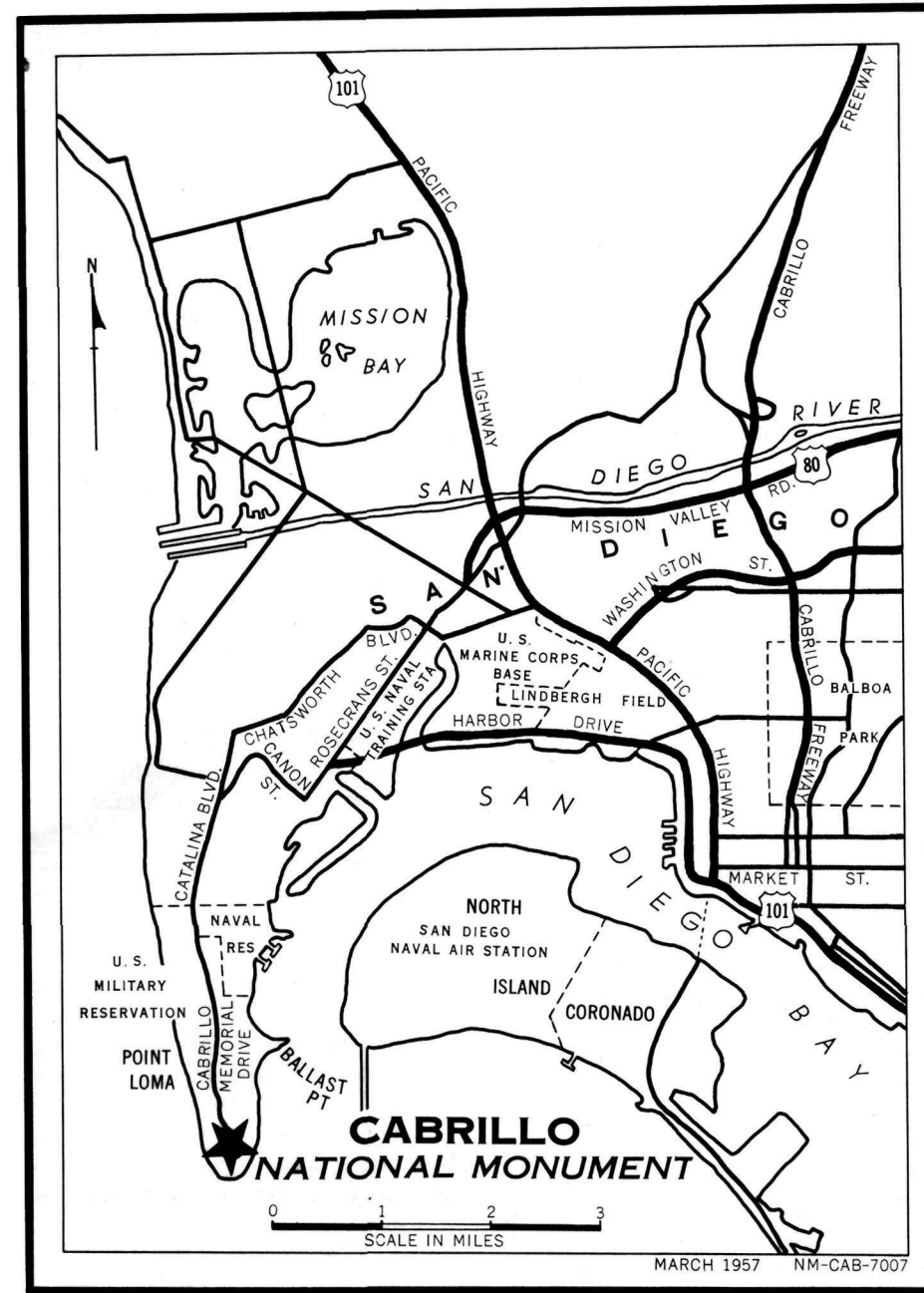
Administration

Cabrillo National Monument is administered by the National Park Service of the United States Department of the Interior.

The area is open from 9 a. m. to 5:30 p. m. Since the monument is within a military reservation, all visitors must be out of the reservation by 6 p. m.

A superintendent whose address is P. O. Box 6175, San Diego 6, Calif., is in immediate charge.

The National Park System of which this area is a unit, is dedicated to conserving the scenic, scientific, and historic heritage of the United States for the benefit and enjoyment of its people.



Reprint 1957

United States Department of the Interior
 FRED A. SEATON, *Secretary*
 NATIONAL PARK SERVICE, CONRAD L. WIRTH, *Director*

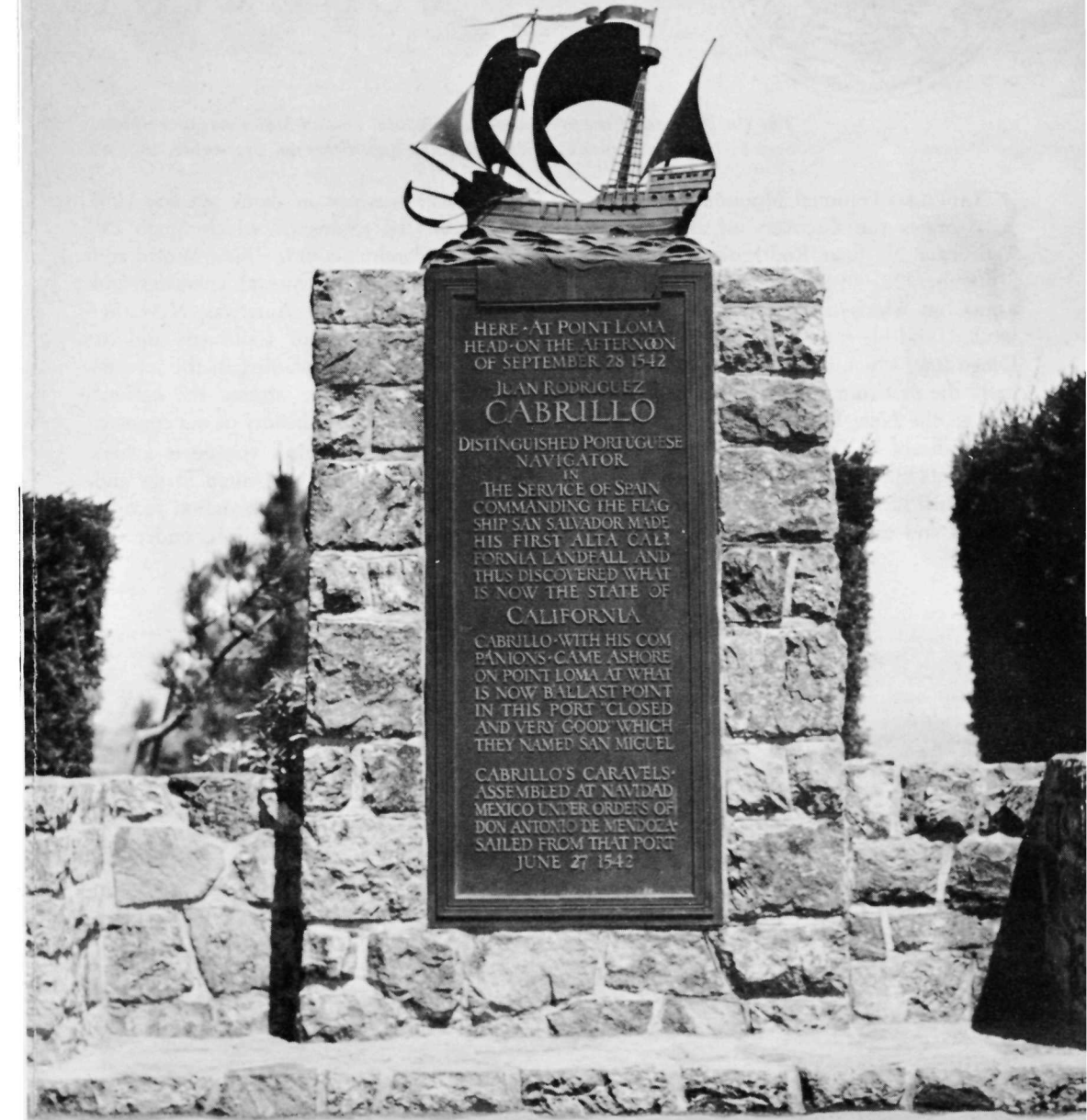
U. S. GOVERNMENT PRINTING OFFICE : 1957—O-443904



(Cover) Cabrillo Memorial Plaque.

CABRILLO

NATIONAL MONUMENT



C A L I F O R N I A

