



FIRE ISLAND LIGHTHOUSE PRESERVATION SOCIETY



Fire Island Lighthouse
First Order Fresnel Lens Return
Proposal





Fire Island Lighthouse Preservation Society



Partners with





Fire Island Lighthouse Preservation Society



Fire Island Lighthouse Preservation Society Mission

Restore and preserve
through education
and capital
improvements the
nautical heritage of
the Fire Island
Lighthouse

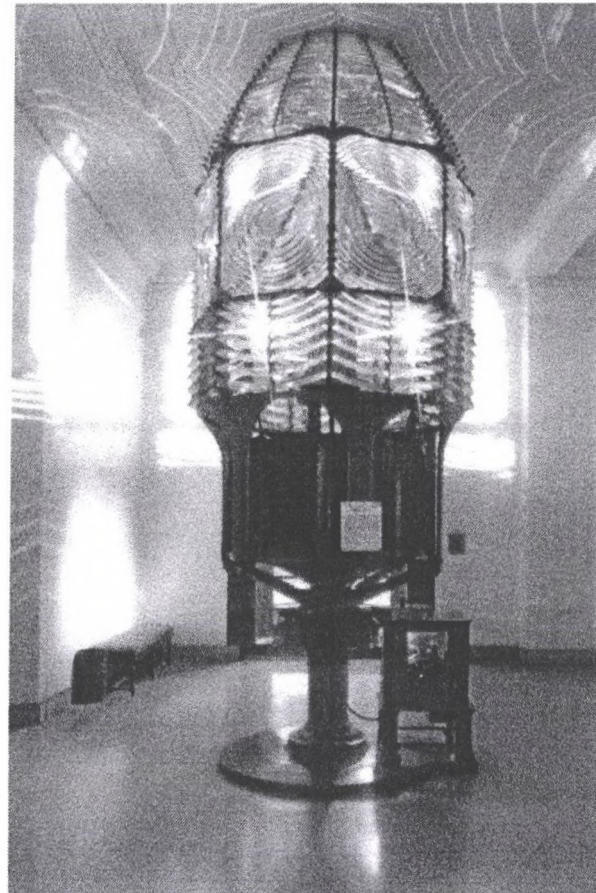
Partners with





Fire Island Lighthouse Preservation Society

In 1858 the First Order Fresnel lens was installed atop the new Lighthouse Tower. In 1933 the lens was removed and placed on display in the Franklin Museum in Philadelphia until 2000. The Preservation Society, in partnership with the National Park Service, would like the original light, the soul of the Fire Island Lighthouse, returned to its home.



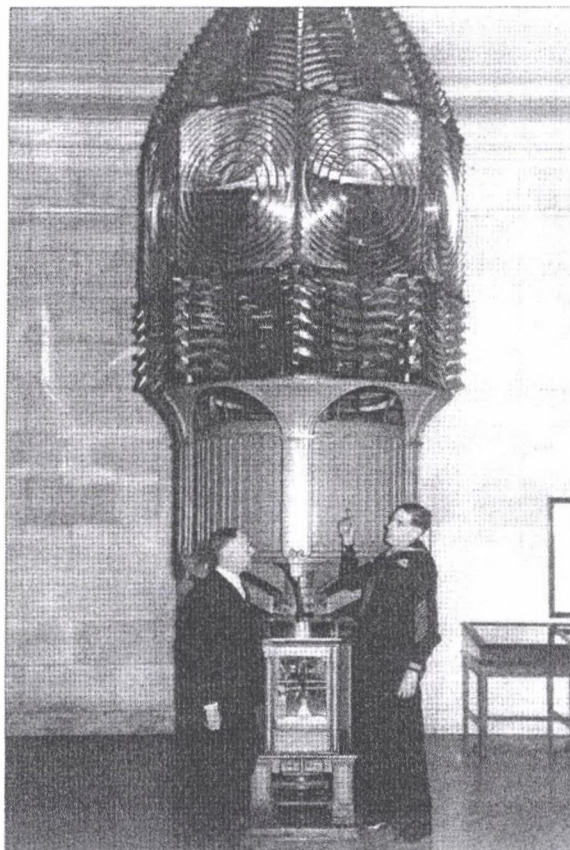
Partners with





Fire Island Lighthouse Preservation Society

The US Coast Guard is prepared to loan the Fire Island First Order Fresnel Lens to the National Park Service. The criteria for the loan is that it must be displayed for the visiting public, be protected from environmental conditions and be secure from vandalism. The Society's plans will meet these criteria.



Partners with

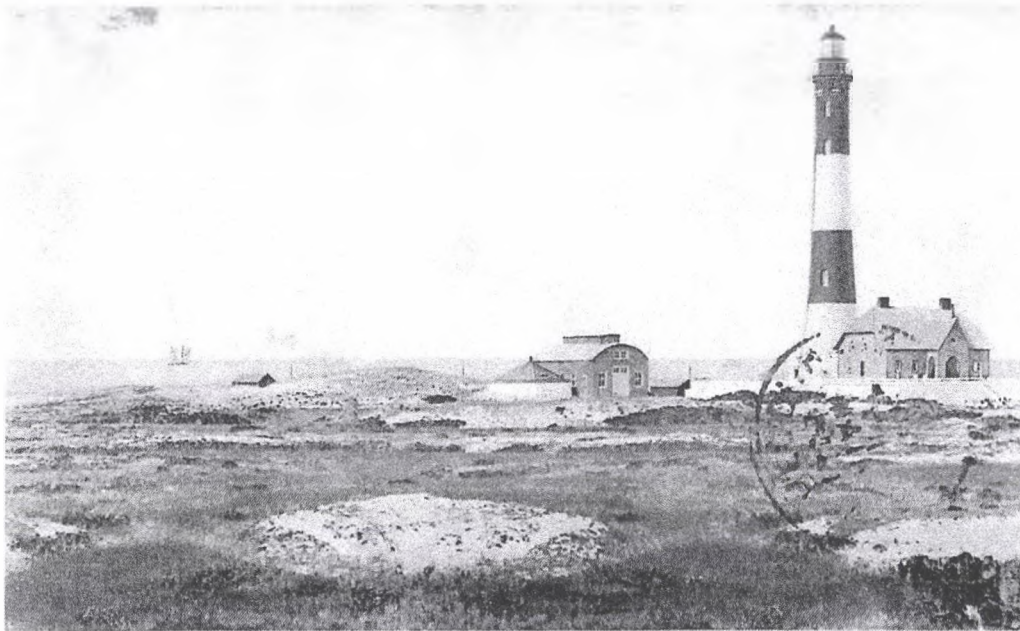


Fire Island
Lighthouse



Preservation
Society

Fire Island Lighthouse Preservation Society



Light House.

Fire Island, L. I. Aug 5, 1904

All is well. Hope you are having a good time

In 1894, an experimental electric station was built adjacent to site of the first Fire Island Lighthouse. The building was built to produce steam generated electricity for the beacon on top of the lighthouse tower.

Partners with



Fire Island
Lighthouse



Preservation
Society

Fire Island Lighthouse Preservation Society



After two years, the generators were removed and shipped to Staten Island leaving the 1,250 square foot building for storage. The building remained until the 1940's, when it was demolished. The boat house located on the bay dock was subsequently moved onto this location where it rests today.

Partners with





Fire Island Lighthouse Preservation Society

During the last year, representatives of the National Park Service and the Preservation Society met to determine alternatives for the return of the first order fresnel lens. The preferred alternative was to reconstruct the historic electric station to the west of the Fire Island Lighthouse and assemble the lens for display inside.



Partners with





Fire Island Lighthouse Preservation Society

Detailed architectural plans have been produced based on historic photos and actual dimensions . The reconstructed building will closely resemble these photos of the exterior.



Fire Island Light, Kismet Beach, Fire Island, N. Y.

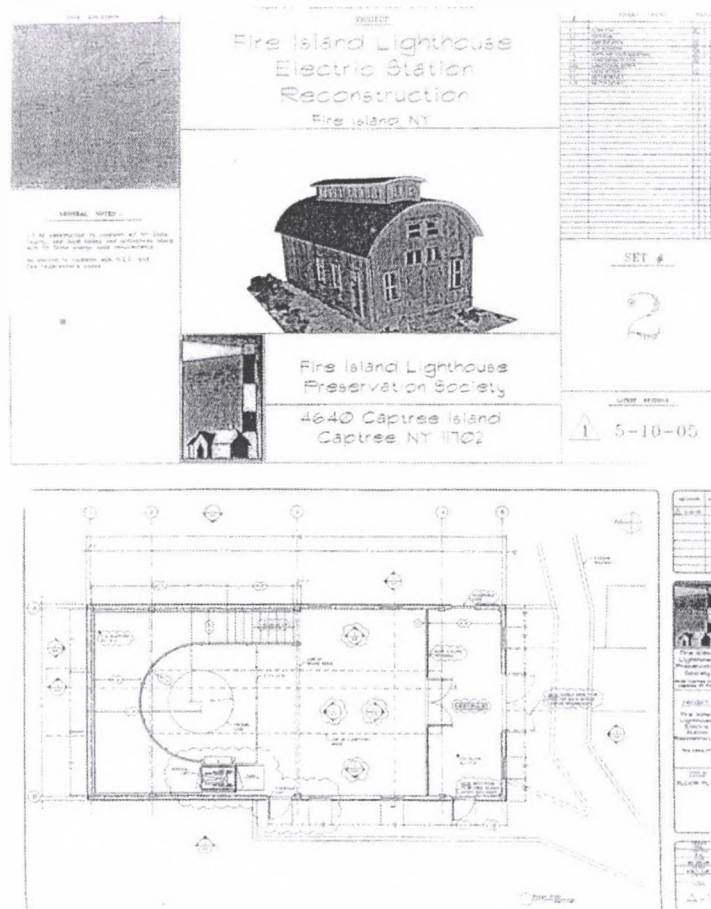
Partners with





Fire Island Lighthouse Preservation Society

The architectural drawings are the first step in preparing for the return of the Fire Island First Order Fresnel Lens. The building will be climate regulated and have current security techniques incorporated in the design.



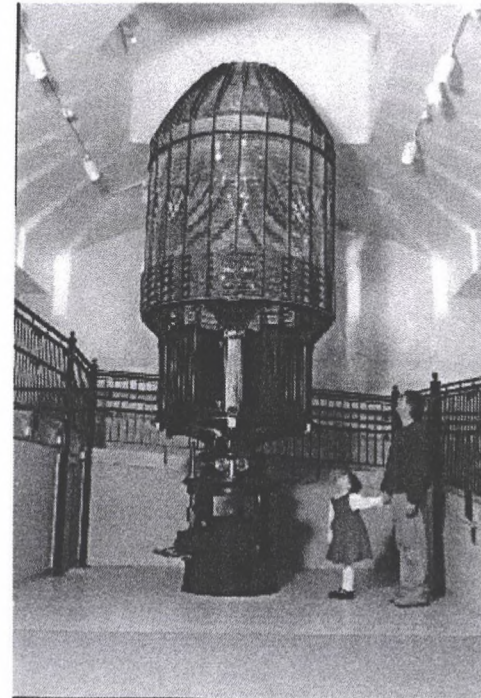
Partners with





Fire Island Lighthouse Preservation Society

The interior of the reconstructed Electric Station will be similar to the interior of the building where the Destruction Island First Order Lens is displayed in the state of Washington.



Partners with





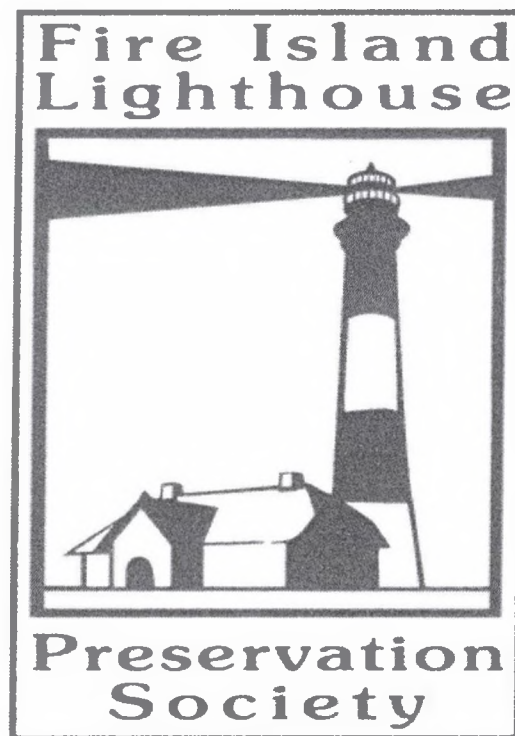
Fire Island Lighthouse Preservation Society

- A fundraising plan was developed to identify the approximate costs and possible donors to accomplish the following goals:
 - Produce an Environmental Assessment for the proposed project
 - Obtain suitable plans to construct a historically accurate building
 - Provide for construction costs to complete the building
 - Provide adequate utilities and interior security for the Fresnel lens
 - Provide for increased interpretative displays
 - Relocate existing boat house to a more historic location
 - Provide for necessary support costs of utilities and personnel
 - Provide for future costs involved with the operation and maintenance of the lighthouse complex

Partners with



Help Bring the Light Home



4640 Captree Island

Captree Island, New York 11702

631.321.7028

www.fireislandlighthouse.com