



---

# Fire Island Lighthouse Power House and Electric Station Floor Plans and Drawings



FIRE ISLAND LIGHTHOUSE  
PRESERVATION SOCIETY  
4640 CAPTREE ISLAND  
CAPTREE ISLAND, NEW YORK 11702



SITE LOCATION



PROJECT:

# Fire Island Lighthouse Electric Station Reconstruction

Fire Island, NY

SHEET #	SHEET INDEX	REVISION
A-1	FLOOR PLAN	
A-2	ROOF PLAN	
A-3	WEST ELEVATION	
A-4	EAST ELEVATION	
A-5	NORTH AND SOUTH ELEVATIONS	
A-6	LONGITUDINAL SECTION	
A-7	CROSS SECTION	
A-9	SECTION DETAILS	
A-10	SECTION DETAILS	

GENERAL NOTES :

- 1.) All construction to conform w/ NY State, County, and local codes and ordinances along with NY State energy code requirements.
- All electric to conform with N.E.C. and Fire Underwriter's codes.

SET #

1

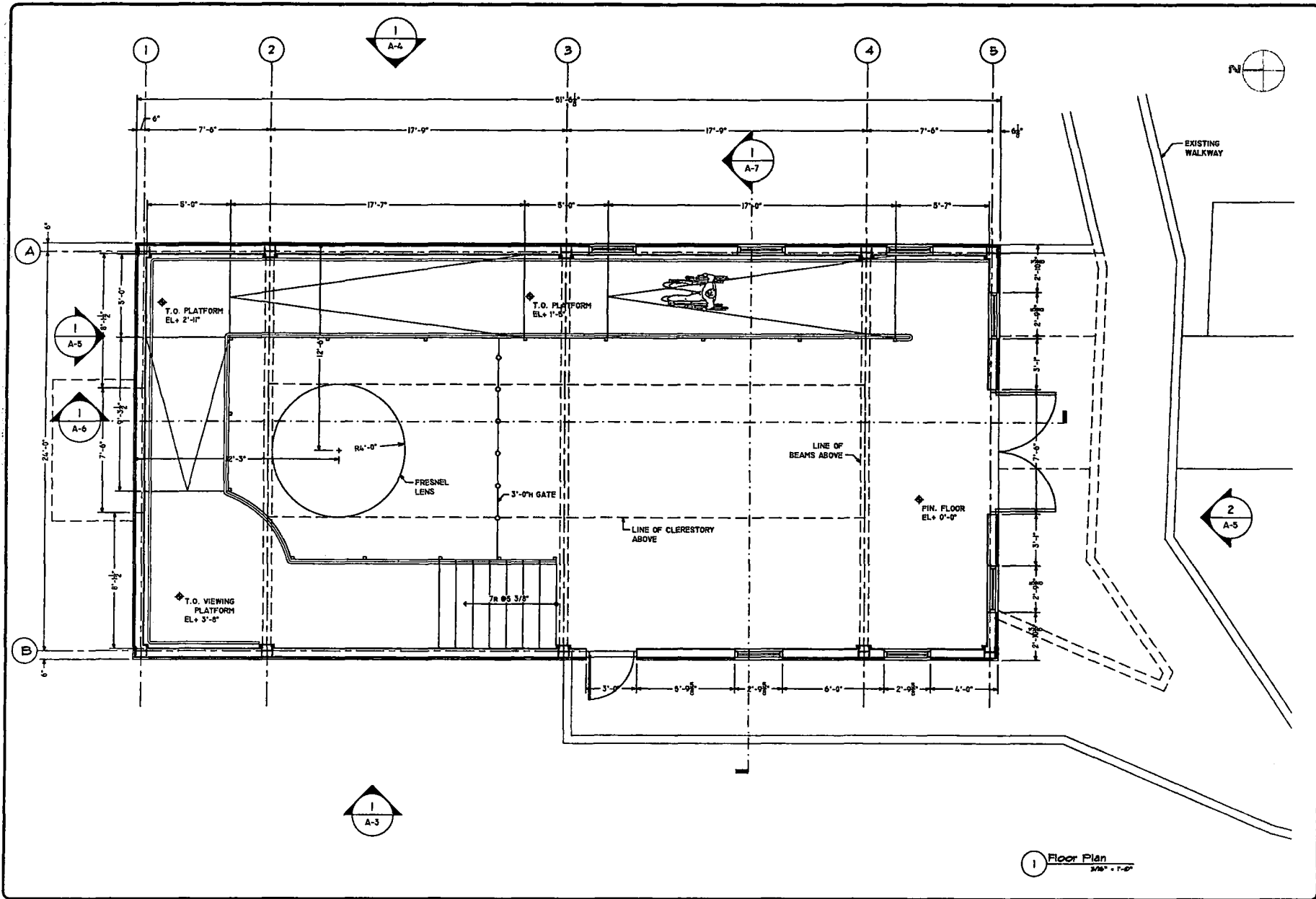
6/5/13/137



Fire Island Lighthouse  
Preservation Society  
4640 Captree Island  
Captree, NY 11702

LATEST REVISION :





REVISIONS	BY



Fire Island  
Lighthouse  
Preservation  
Society  
46-46 Cypress Island  
Cypress, NY 11702

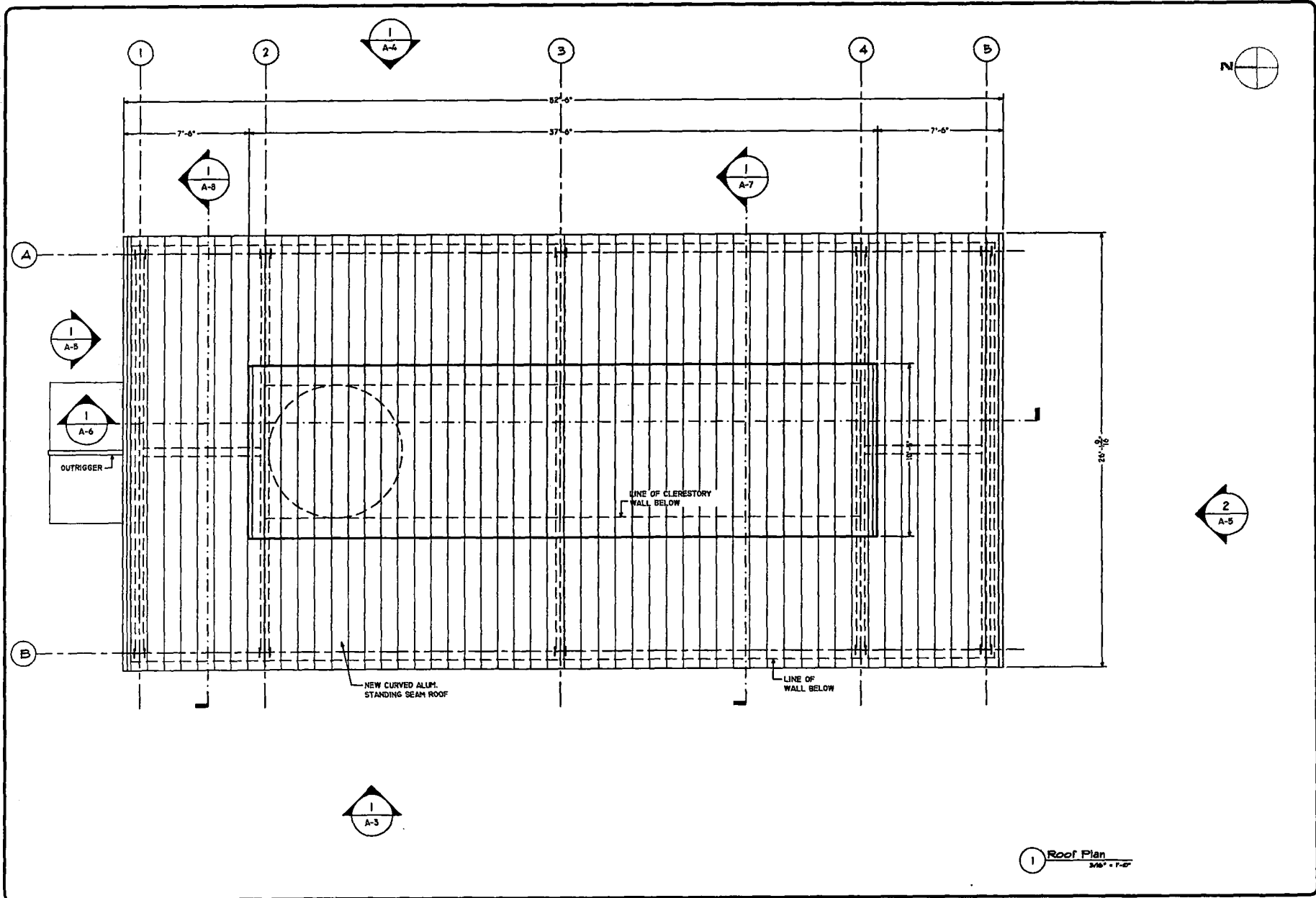
**PROJECT:**  
Fire Island  
Lighthouse  
Electric  
Station  
Reconstruction  
Fire Island, NY

**TITLE:**  
FLOOR PLAN

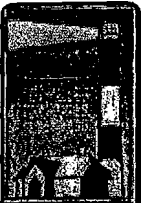
DRAWN  
PIS  
CHECKED  
K.A.  
DATE  
01-22-08  
SCALE  
3/16" = 1'-0"  
JOB NO.

SHEET  
A-1  
OF SHEETS

1 Floor Plan  
3/8" = 1'-0"



REVISIONS	BY



Fire Island  
Lighthouse  
Preservation  
Society  
46-49 Captree Island  
Captree, NY 11722

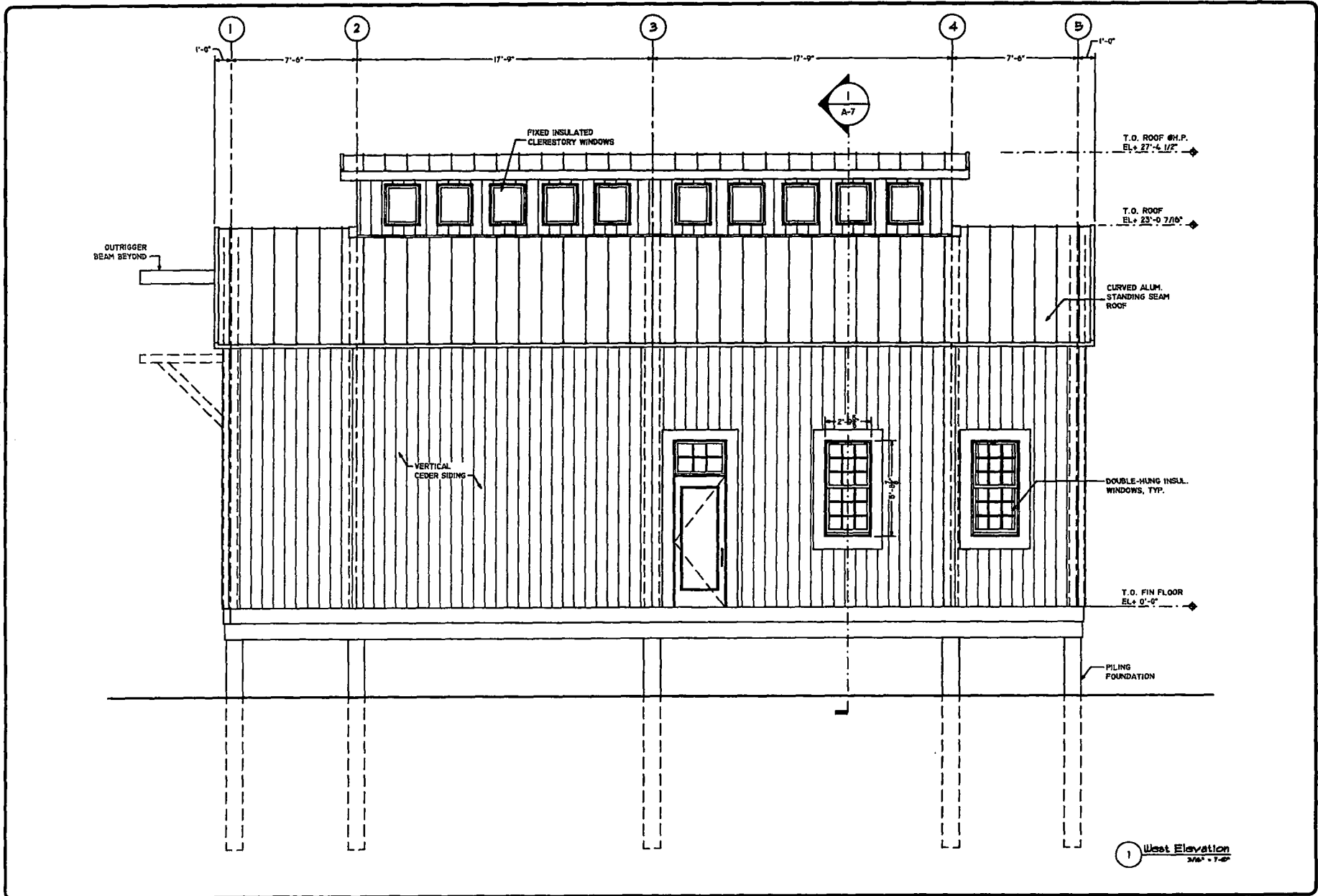
**PROJECT:**  
Fire Island  
Lighthouse  
Electric  
Station  
Reconstruction  
Fire Island, NY

**TITLE:**  
ROOF PLAN

DRAWN  
BY  
CHECKED  
K.A.  
DATE  
02-05-02  
SCALE  
3/16" = 1'-0"  
JOB NO.

SHEET  
A-2  
OF SHEETS

1 Roof Plan  
3/16" = 1'-0"



REVISIONS	BY



Fire Island Lighthouse Preservation Society  
 44-46 Captree Island  
 Captree, NY 11722

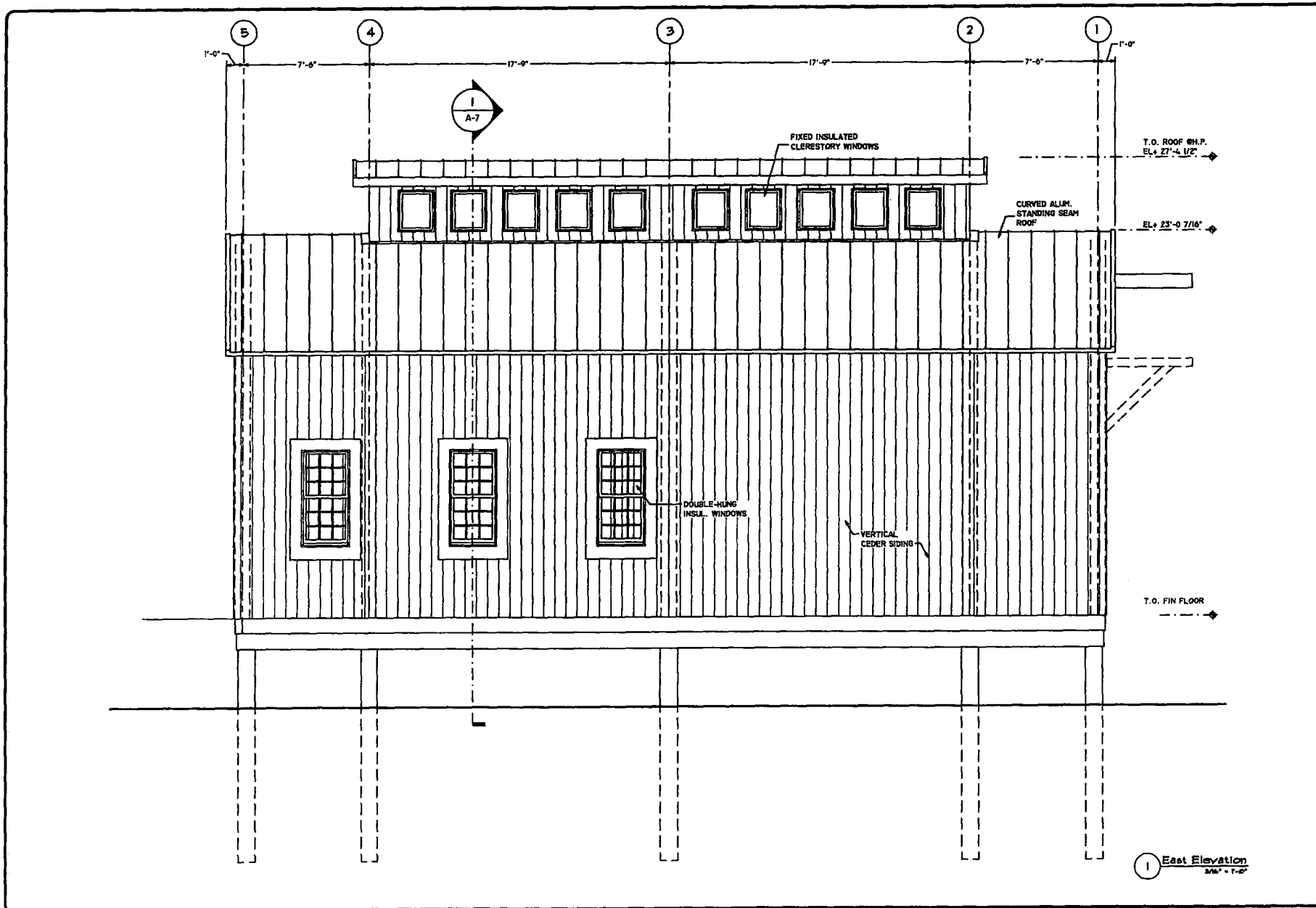
**PROJECT:**  
 Fire Island Lighthouse Electric Station Reconstruction  
 Fire Island, NY

**TITLE:**  
 WEST ELEVATION

DRAWN  
 M.B.  
 CHECKED  
 K.A.  
 DATE  
 07-05-08  
 SCALE  
 3/16" = 1'-0"  
 JOB NO.

SHEET  
 A-3  
 OF SHEETS

1 West Elevation  
 3/16" = 1'-0"



REVISIONS	BY



Fire Island  
Lighthouse  
Preservation  
Society  
46-40 Captree Island  
Captree, NY 11822

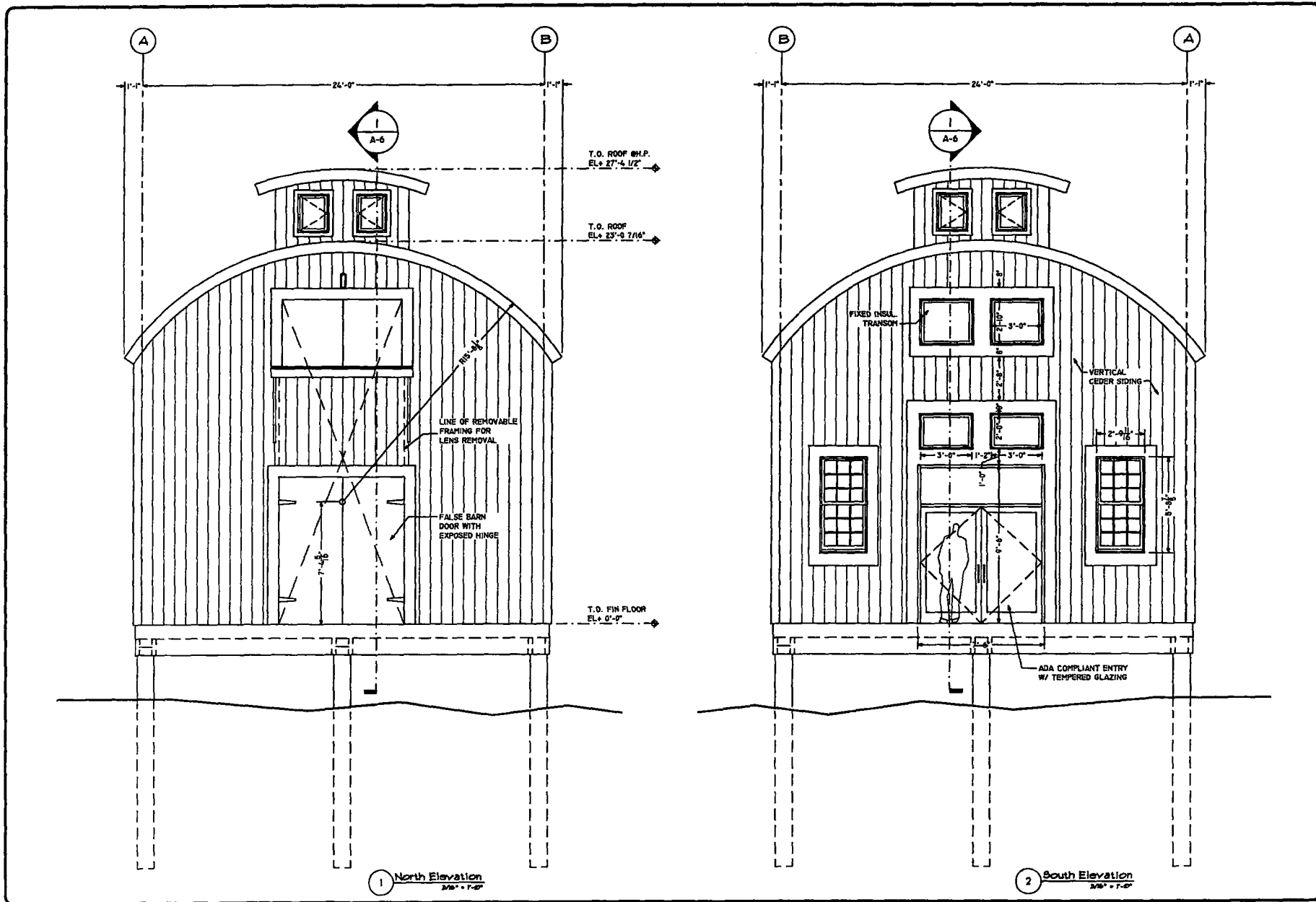
**PROJECT:**  
Fire Island  
Lighthouse  
Electric  
Station  
Reconstruction  
Fire Island, NY

**TITLE:**  
EAST  
ELEVATION

DRAWN  
T.S.  
CHECKED  
K.A.  
DATE  
07-05-05  
SCALE  
3/16" = 1'-0"  
JOB NO.

SHEET  
A-4  
OF SHEETS

1 East Elevation  
3/16" = 1'-0"



REVISIONS	BY

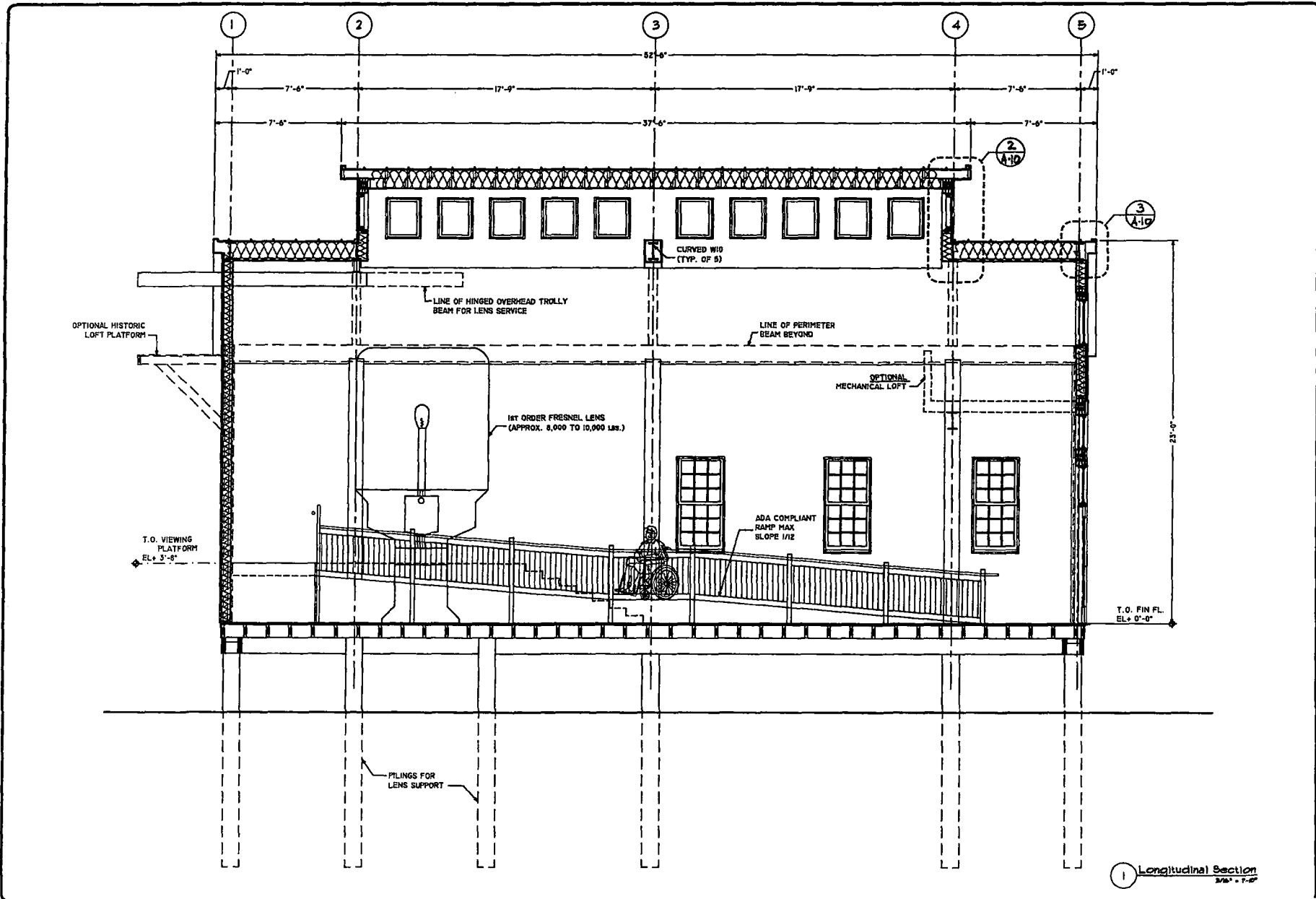


Fire Island Lighthouse Preservation Society  
 44-40 Captree Island  
 Captree, NY 11622

**PROJECT:**  
 Fire Island Lighthouse Electric Station Reconstruction  
 Fire Island, NY

**TITLE:**  
 NORTH & SOUTH ELEVATIONS

DRAWN  
 M.S.  
 CHECKED  
 K.A.  
 DATE  
 02-05-05  
 SCALE  
 3/8" = 1'-0"  
 JOB NO.  
 SHEET  
 A-5  
 OF SHEETS



① Longitudinal Section  
3/16" = 1'-0"

REVISIONS	BY



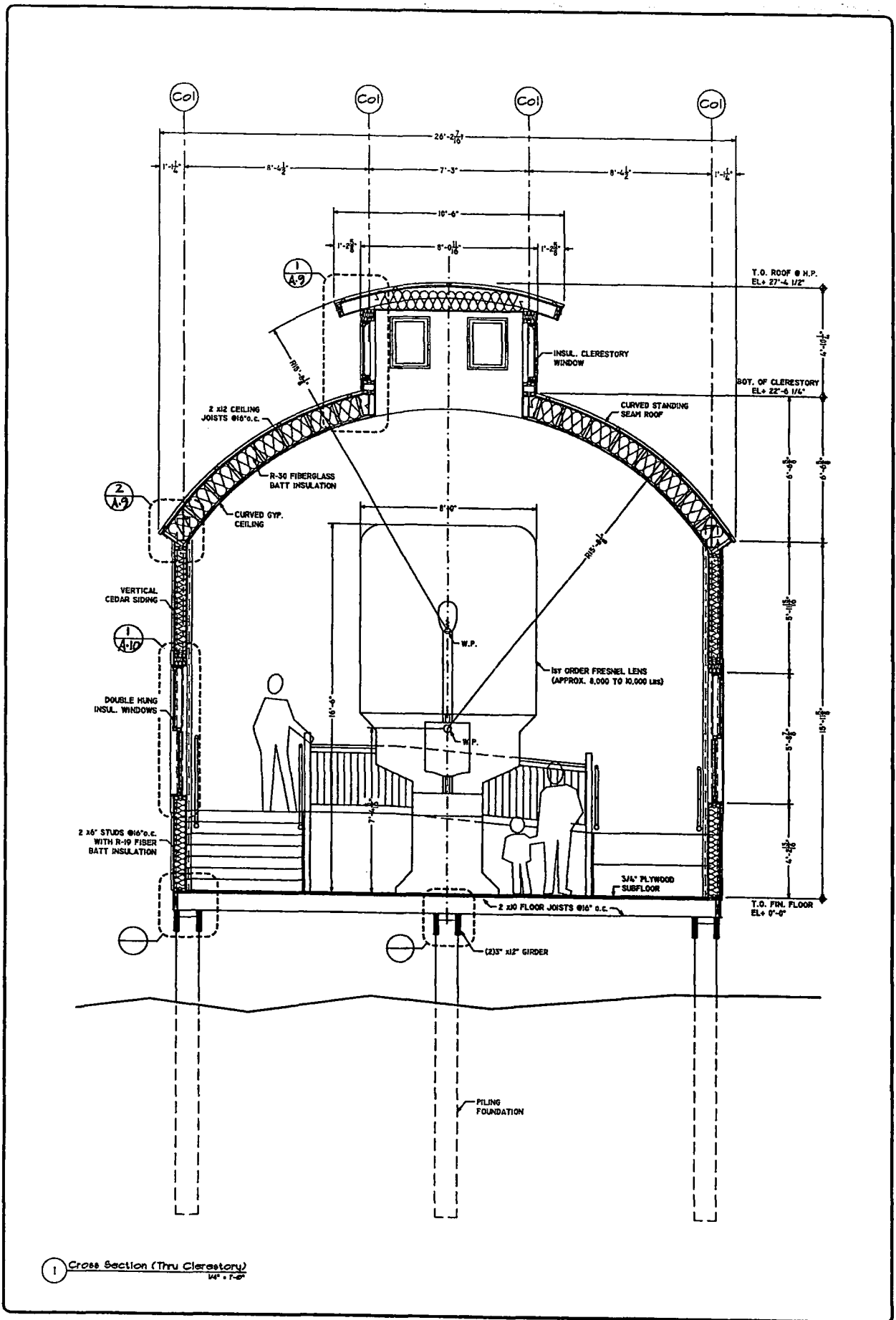
Fire Island  
Lighthouse  
Preservation  
Society  
46-40 Captree Island  
Captree, NY 11702

**PROJECT:**  
Fire Island  
Lighthouse  
Electric  
Station  
Reconstruction  
Fire Island, NY

**TITLE:**  
LONGITUDINAL  
SECTION

DRAWN	M.G.
CHECKED	K.A.
DATE	02-26-09
SCALE	3/16" = 1'-0"
JOB NO.	
SHEET	A-6
OF SHEETS	





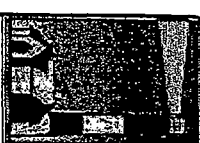
1 Cross Section (Thru Clerestory)  
1/4" = 1'-0"

DRAWN
CHECKED
DATE
SCALE
1/4" = 1'-0"
JOB NO.
SHEET
A-7
OF SHEETS

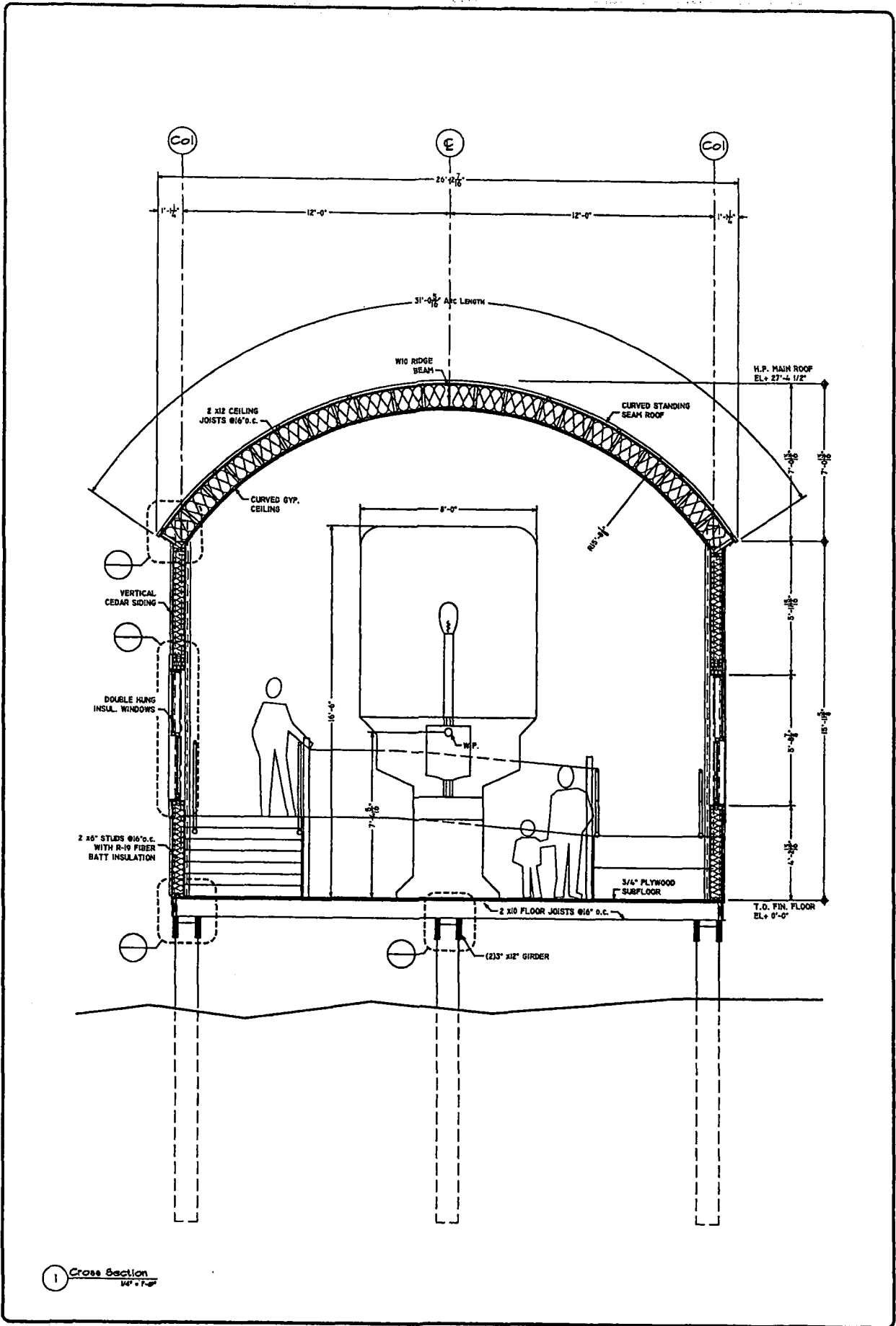
TITLE:
CROSS SECTION

PROJECT:  
Fire Island  
Lighthouse  
Preservation  
Electric  
Station  
Reconstruction  
Fire Island, NY

4445 Capone Island  
Cape Cod, NY 11938



REVISIONS	BY



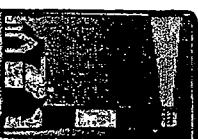
1 Cross Section  
1/4" = 1'-0"

DATE	6/1-03
CHECKED	MA
DRAWN	MA
SCALE	1/4" = 1'-0"
NO. OF SHEETS	3
SHEET	1
A-8	
OF SHEETS	

TITLE:	CROSS SECTION
--------	---------------

PROJECT:  
Fire Island  
Lighthouse  
Electric  
Station  
Reconstruction  
Fire Island, NY

4400 Captives Island  
Capriole, NY 11937



REVISIONS	BY