

EXECUTIVE BRIEFING

NORMAL FIRE YEAR PROGRAMMING

Normal Fire Year Programming, FIREPRO, is a wildland fire management operations analysis and budget justification process. The FIREPRO Annual Operating Program will compliment ONPS funds to meet standards and policy requirements for fire management activities. Regional Directors will be the approving officials for FIREPRO Annual Operating Programs which will be funded under PWE 342, Emergency Fire Operations.

The pilot program test and development phase for FIREPRO was completed in August of 1982. Successful completion of the pilot phase has lead to implementation of the process for Priority I parks.

An instruction package for the analysis will be issued by the WASO Branch of Fire Management to Priority I parks on October 15, 1982. Accompanying this instruction package will be two sets of information for verification. The first is historical fire occurrence data (1972-1981) for the specific park and the second is a master list of firefighting qualifications of park personnel. If the occurrence data or qualification information is incomplete or not accurate, corrections can be submitted along with the other required inputs to the Branch of Fire Management. Nine input forms will be supplied to be filled out. Those forms are: (1) Lands Data, (2) Agreements, (3) Program Manager, (4) Real Property Value Estimates, (5) Weather Station Catalog, (6) Equipment Inventory, (7) Engine Inventory, (8) Prescribed Burn Program, (9) Contracted or Owned Aircraft.

A two month timeframe is provided for submission of the input forms. See Exhibit A which illustrates the string of events and functions to take place for the entire analysis and approval of a FIREPRO Annual Operating Program.

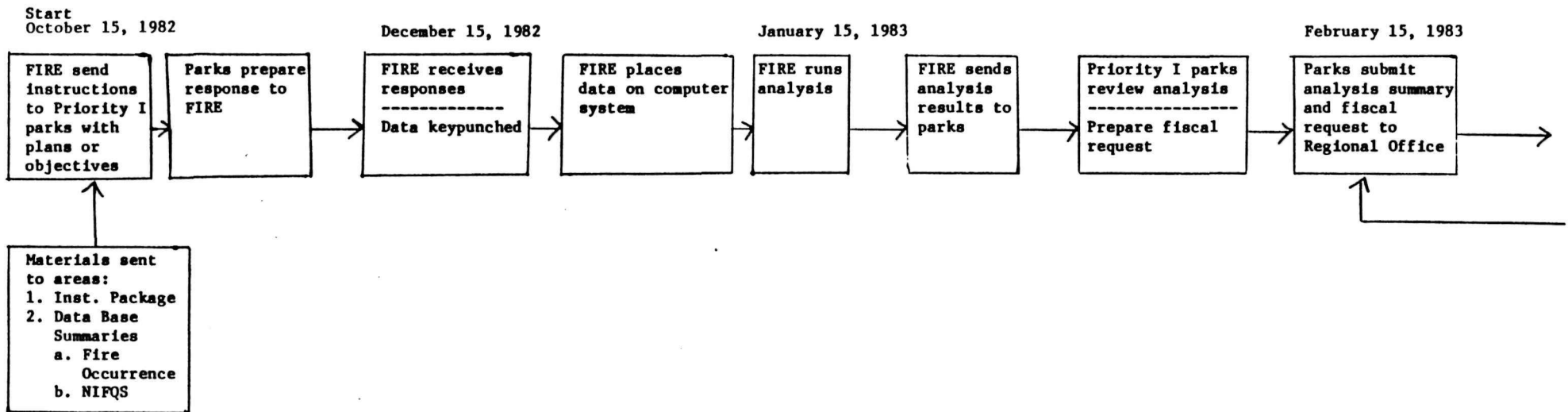
FIREPRO is automated to the extent of providing each park a summary of analysis. From this summary the park prepares a budget request for Regional Director approval.

The heart of the FIREPRO process is the identification of a fire management organizational complexity level for each park. See Exhibit B for details regarding the three organizational complexity levels and Exhibit C for the cost control elements designed into the FIREPRO process. Given an organizational complexity level, the park tailors a program to meet its needs for fire management activities.

After the initial year of analysis and program approval a FIREPRO Annual Operating Program will be submitted for regional approval prior to each fiscal year. Thus each park will have recurring funding to maintain an adequate fire management program.

Any questions regarding FIREPRO can be directed to the appropriate Regional Fire Coordinator.

EXHIBIT A
FIREPRO
FY 83 IMPLEMENTATION



FIREPRO
FY 83 IMPLEMENTATION
(Continued)

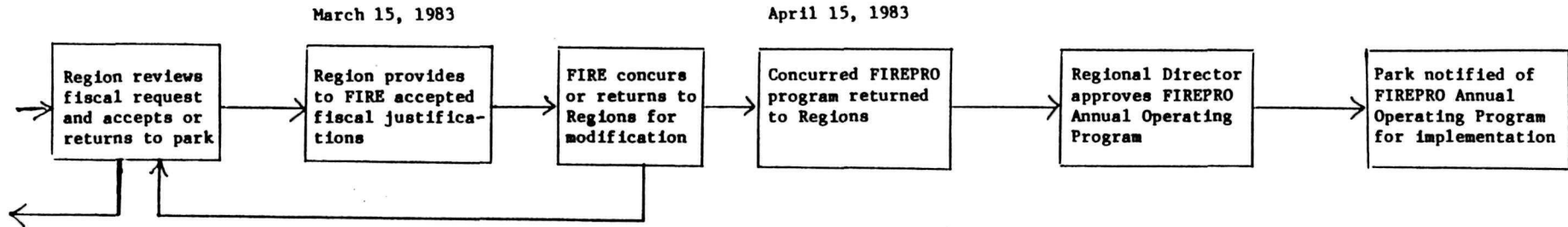


EXHIBIT B
FIREPRO
ORGANIZATIONAL COMPLEXITY CONSTRAINTS

Organizational Complexity	Historical Fire Occurrence	Historical Burning Index	Decision Capability Requirement	Training Limits		Qualification Infrastructure	Reserve Fire Cache		Seasonal Hire
				Min	Max		Min	Max	
Initial Attack Level I	Low	Low	Firefighter	Basic Completion	None	None	1 Squad	1 Crew	None
Initial Attack-Level II	Low	High	Crew Boss	One	Three	Firefighter* No Limit	2 Squad	2 Crew	Yes/Limited
Initial Attack-Level III	High	Low/High	Fire Boss III	One	Three	Crew Boss(3 max) Firefighter*- No Limit	2 Crew	6 Crew	Yes Full Org.

*Limitations will be set on arduous duty physical examinations to be funded, therefore, FIREPRO will have a disincentive for maintaining excessive numbers of firefighters.

EXHIBIT C

FIREPRO
COST CONTROLS

Fire Season	Sets the beginning and ending dates of presuppression activity. Defines budgeted period.
Organizational Complexity	Defines a minimum initial attack capability. Funding request is developed to attain organizational complexity standard. The individual manager tailors to his/her park. See attachment for details.
Seasonal Personnel Level	A formula defines the number of seasonals appropriate for organizational complexity. The formula is a direct function of fire occurrence (work load), fire danger and number of internal management units.
Training	Limits (max/min) for training needs and funding are set by organizational complexity and current deficiencies derived from the National Interagency Fire Qualification System (NIFQS).
Physical Examinations	The number of permanent personnel receiving funding support for arduous duty physicals is restricted by the organizational complexity.
Reserve Equipment Cache	Limits (max/min) set by organizational complexity.
Capitalized Equipment	Restricted to organizational complexity.
Program Accountability	25% of Level I and Level II FIREPRO programs will have on-site program reviews conducted annually; this is a four-year cycle. Level III programs will be reviewed annually. Annually all parks must submit a FIREPRO Annual Operating Program for authorization.