

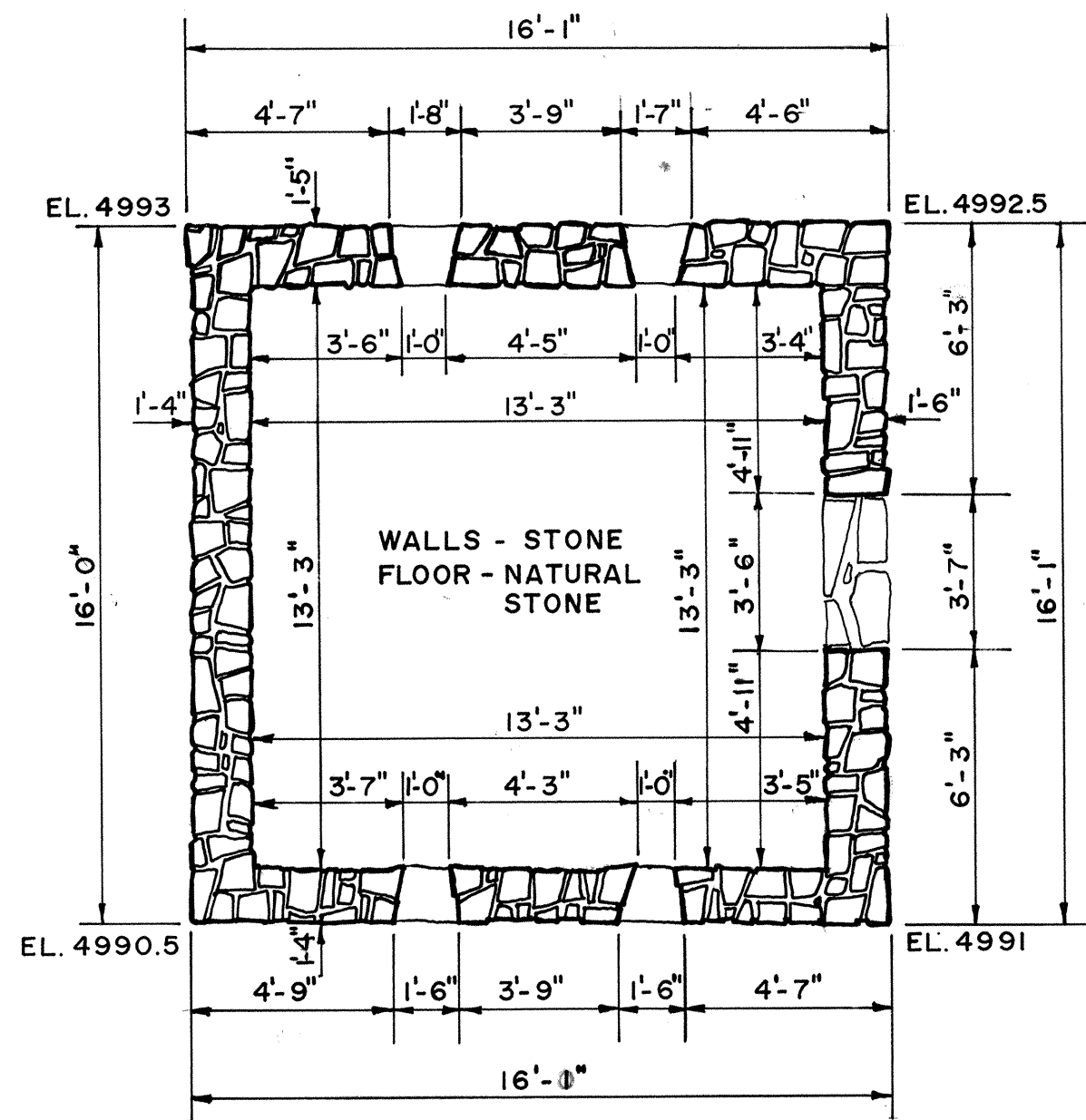
Magazine - Fort Bowie Ruins  
Bowie vicinity  
Cochise County  
Arizona

HABS  
ARIZ,  
2-BOWIE  
11-

ARIZ-63-1

REDUCED COPIES OF MEASURED DRAWINGS

Historic American Buildings Survey

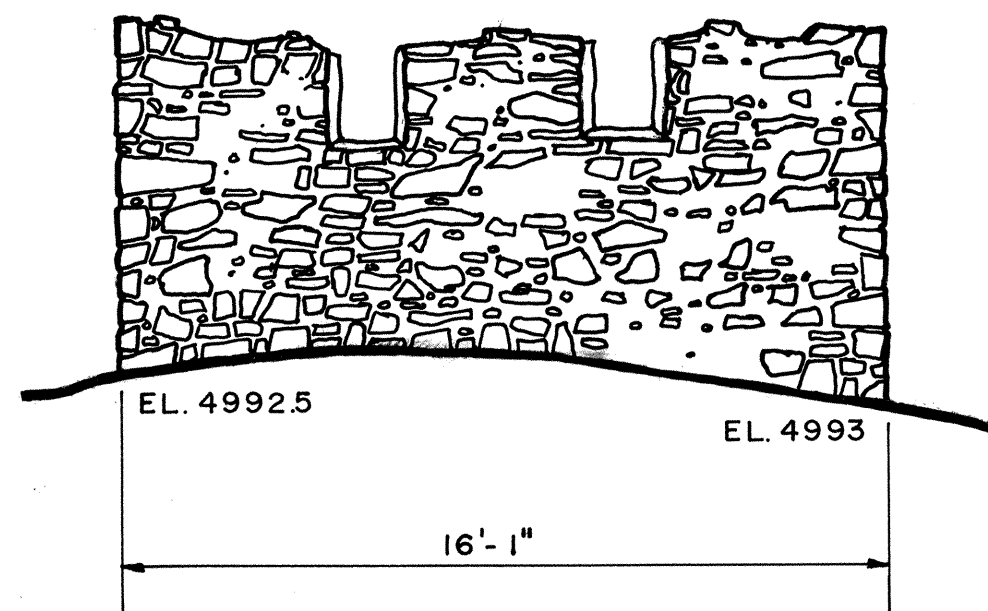


PLAN

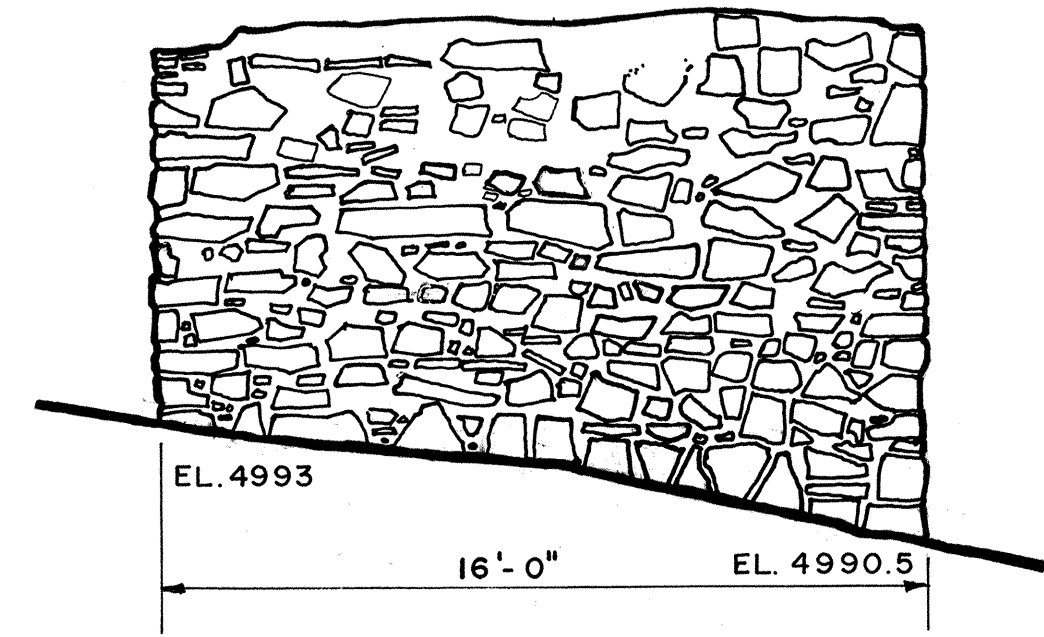


MAGAZINE  
 1/4" = 1'-0"

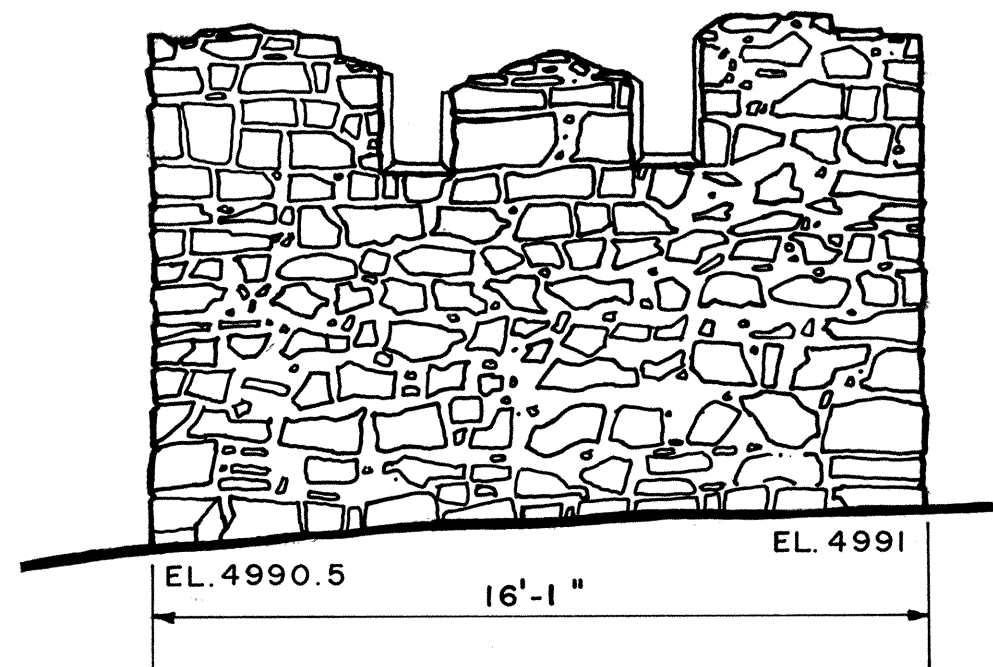
NOTE: GRADE AT CORNERS FROM AERIAL SURVEY NO. NHS-BOW-3002.  
 PLAN AND ELEVATIONS AS EXISTING NOVEMBER, 1967, DURING STABILIZATION EFFORTS.



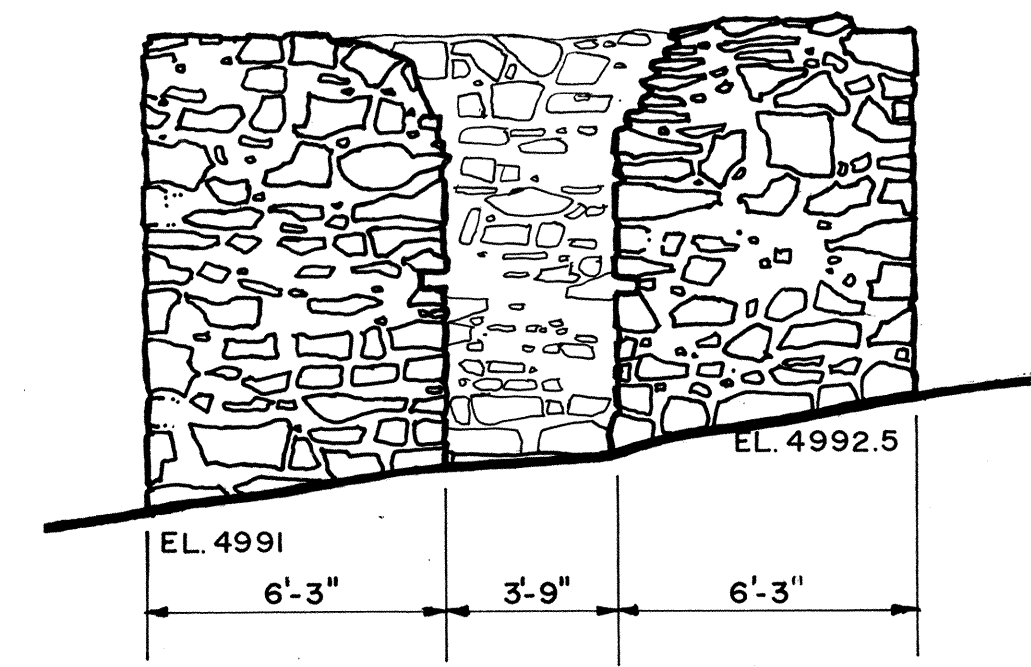
NORTH ELEVATION



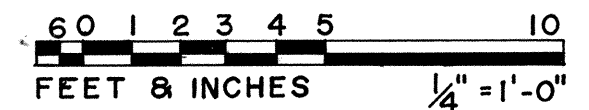
WEST ELEVATION



SOUTH ELEVATION



EAST ELEVATION



DRAWN BY: GORDON HECK, DEL. 1967

DIVISION OF HISTORIC ARCHITECTURE  
 BRANCH OF RESTORATION  
 UNDER DIRECTION OF THE NATIONAL PARK SERVICE,  
 UNITED STATES DEPARTMENT OF THE INTERIOR

COCHISE COUNTY, ARIZONA

NAME AND LOCATION OF STRUCTURE

HB - 36 MAGAZINE - FORT BOWIE RUINS

FORT BOWIE NATIONAL HISTORIC SITE

SURVEY NO.  
 ARIZ  
 63-1

HISTORIC AMERICAN  
 BUILDINGS SURVEY  
 SHEET 1 OF 10 OF 20 SHEETS

LIBRARY OF CONGRESS INDEX NUMBER

ARIZ, 2 BOWIE, 1 L-

HMI

: 15

State ARIZONA

County Cochise (2) Town or Vicinity

Bowie Vicinity

Structure

Fort Bowie, Magazine (Ariz-63-I)

25 miles S. of Bowie. Rubble stone, 16'-1" (one bay front) x 16'-1"; one-room plan. Built between 1865 and 1894. 1 sheet (1967, including plan and elevation recorded during stabilization effort).

card prepared December 1972

INK ON MYLAR, MYLAR PDS.  
PRINT

Form 10-444 (2/62)

HISTORIC AMERICAN BUILDINGS SURVEY