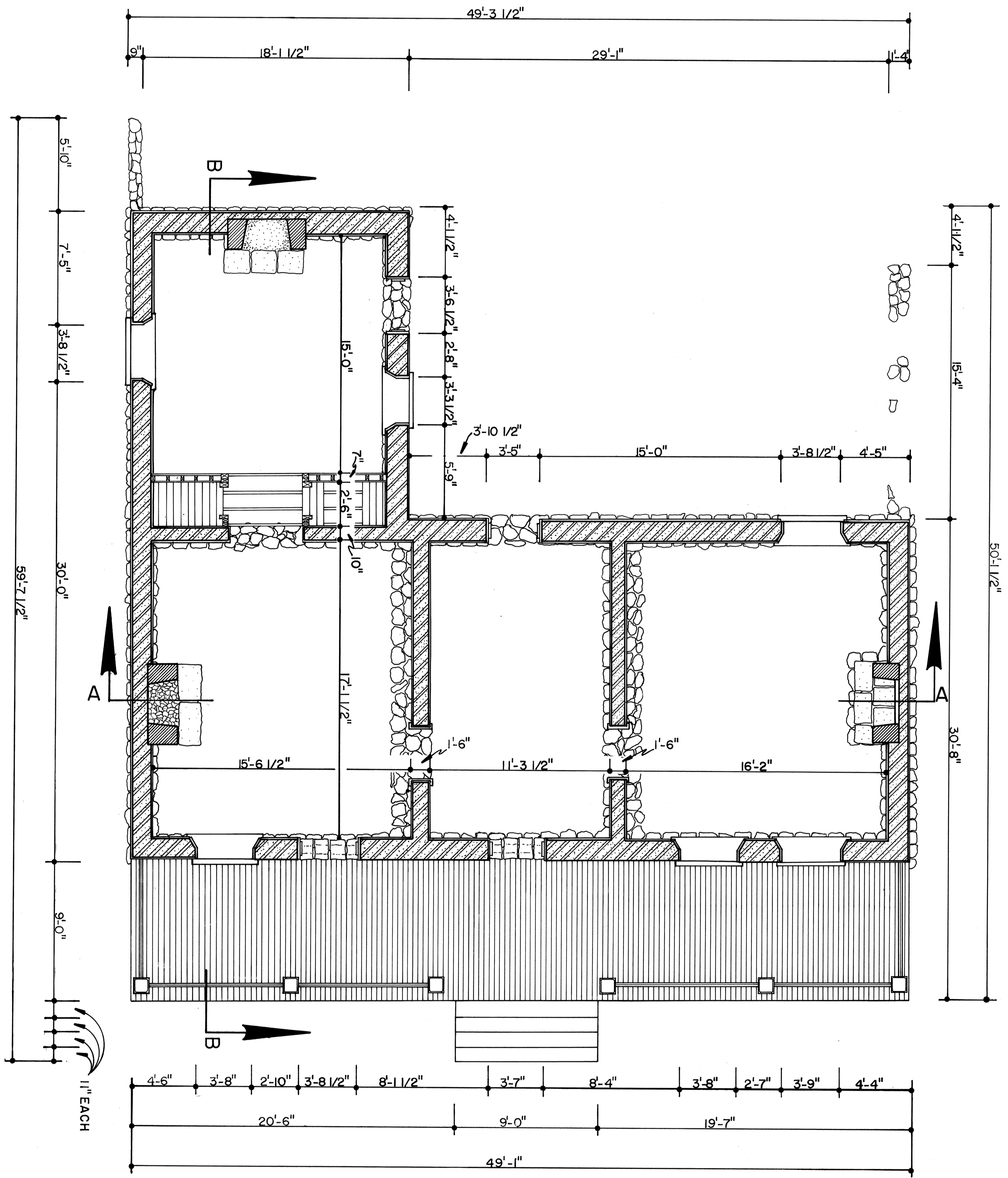


SCALE IN FEET:



FLOOR PLAN

SCALE IN METERS:



DRAWN BY: PAMELA J. BURDICK AND ROBERT R. ARZOLA

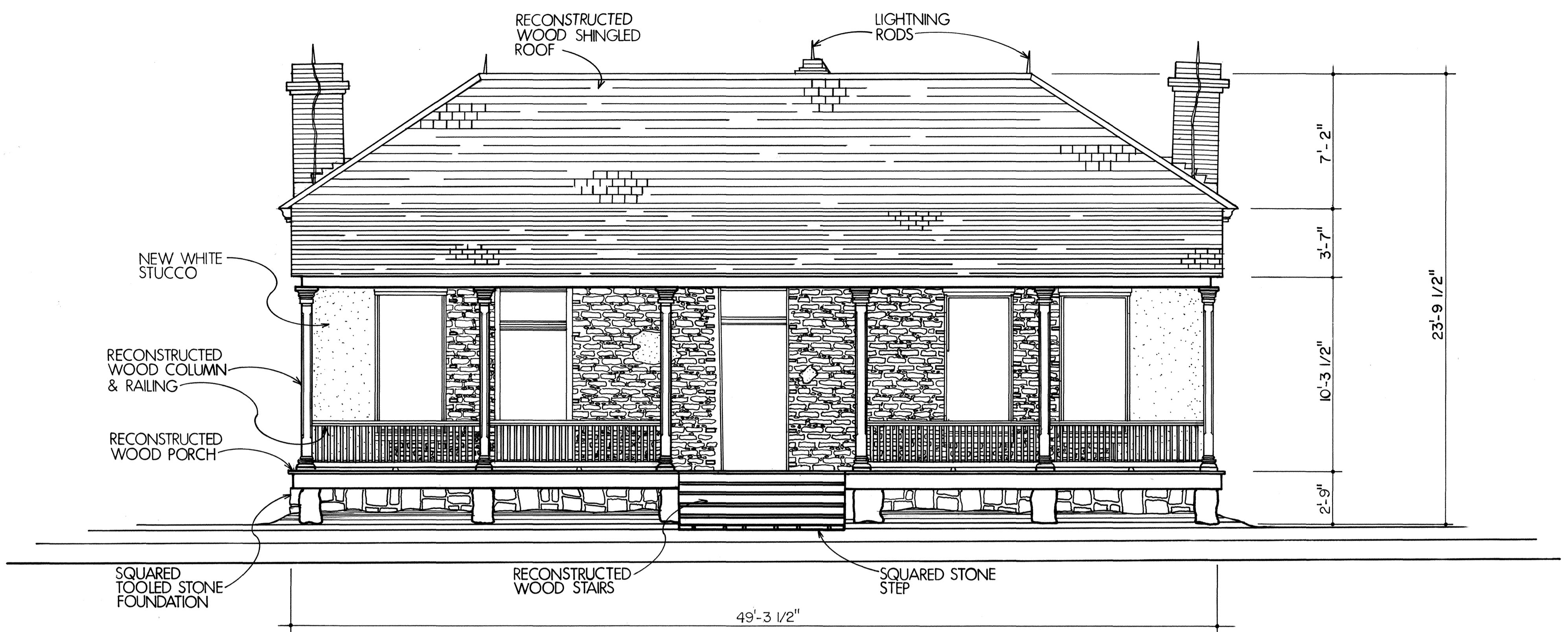
FORT DAVIS RECORDING TEAM  
NATIONAL PARK SERVICE  
UNITED STATES DEPARTMENT OF THE INTERIOR

NAME AND LOCATION OF STRUCTURE  
**FORT DAVIS NATIONAL HISTORIC SITE (HB-12) CAPTAIN'S QUARTERS - 1867-1871**  
ON THE NORTH END OF OFFICERS' ROW  
JEFF DAVIS COUNTY  
TEXAS

SURVEY NO.  
TX-3368

HISTORIC AMERICAN  
BUILDINGS SURVEY  
SHEET 1 OF 3 SHEETS

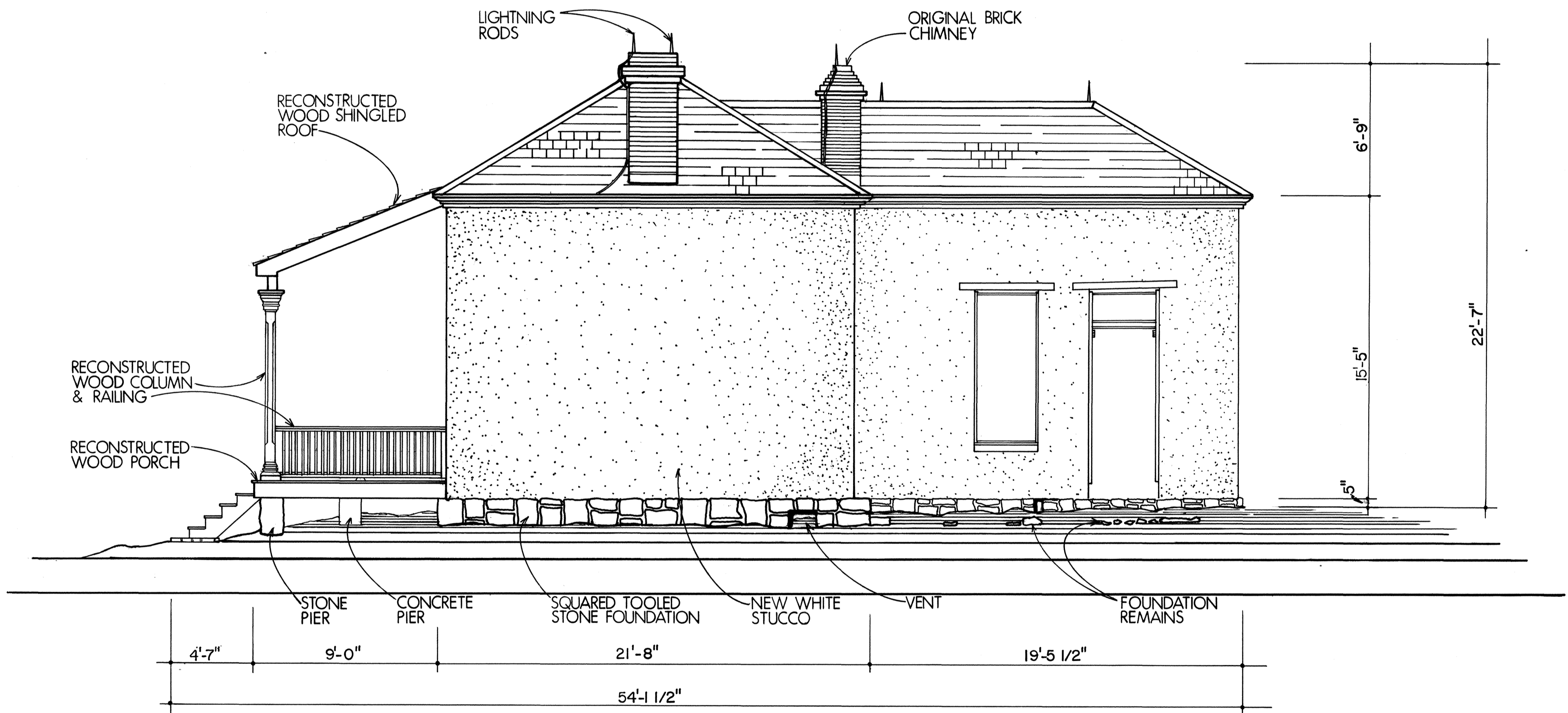
LIBRARY OF CONGRESS  
INDEX NUMBER



SCALE IN FEET: 0 1 5 10

EAST ELEVATION

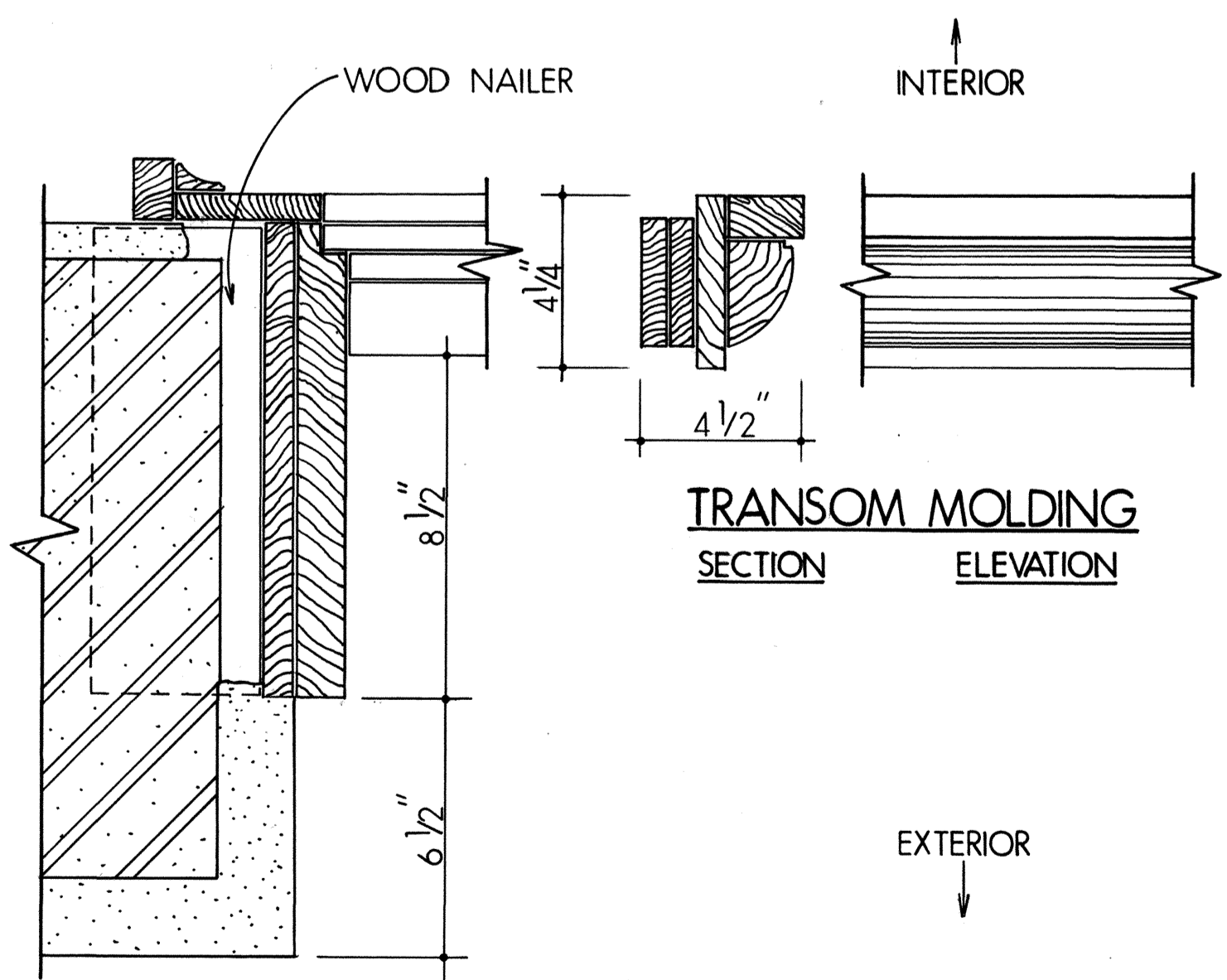
SCALE IN METERS: 0 0.5 1 5



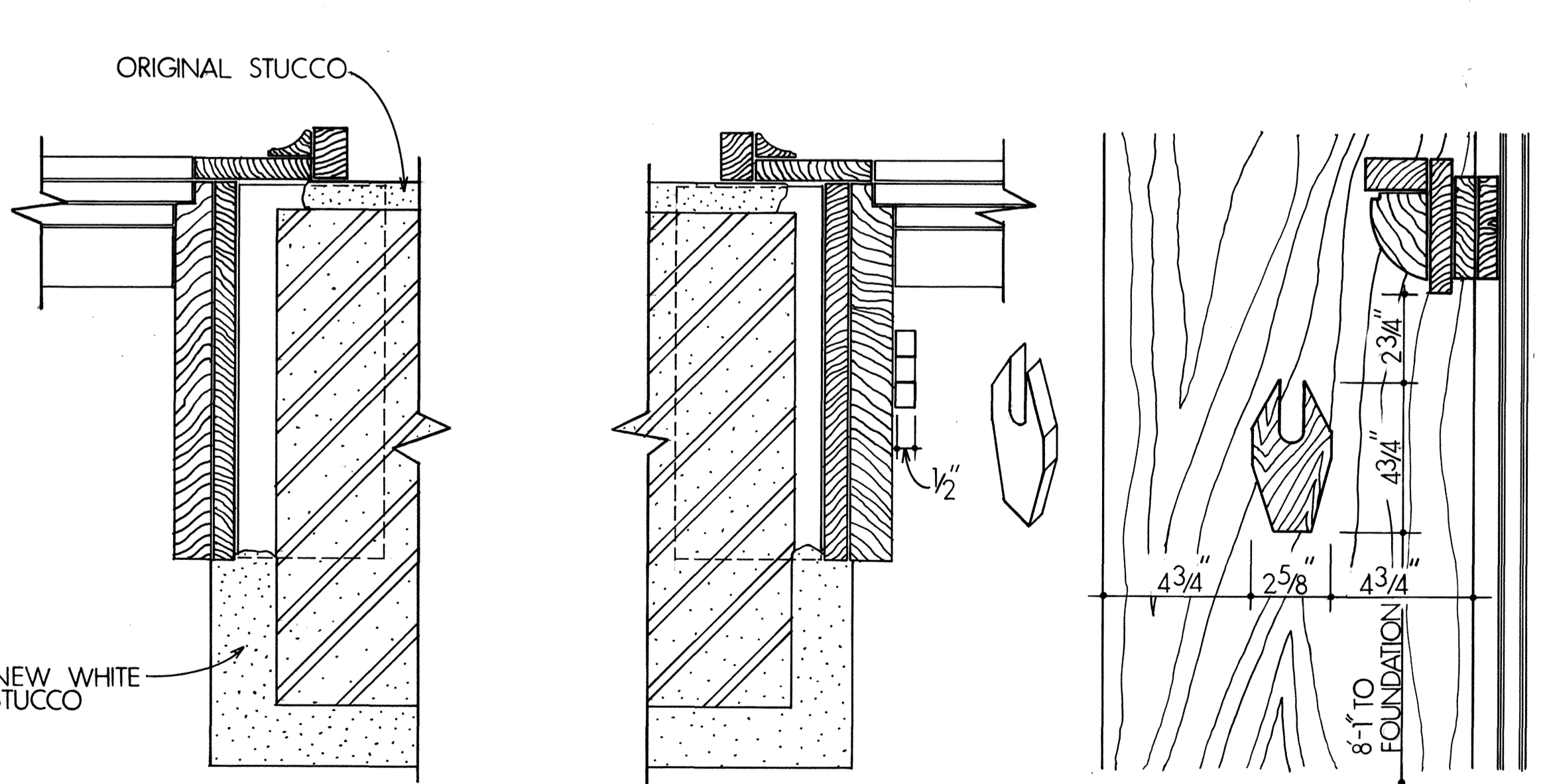
SCALE IN FEET: 0 1 5 10

NORTH ELEVATION

SCALE IN METERS: 0 0.5 1 5



EXTERIOR DOOR FRAME & TRANSOM DETAIL



CURTAIN ROD DETAIL

DRAWN BY WILLIAM J. LINDSTROM

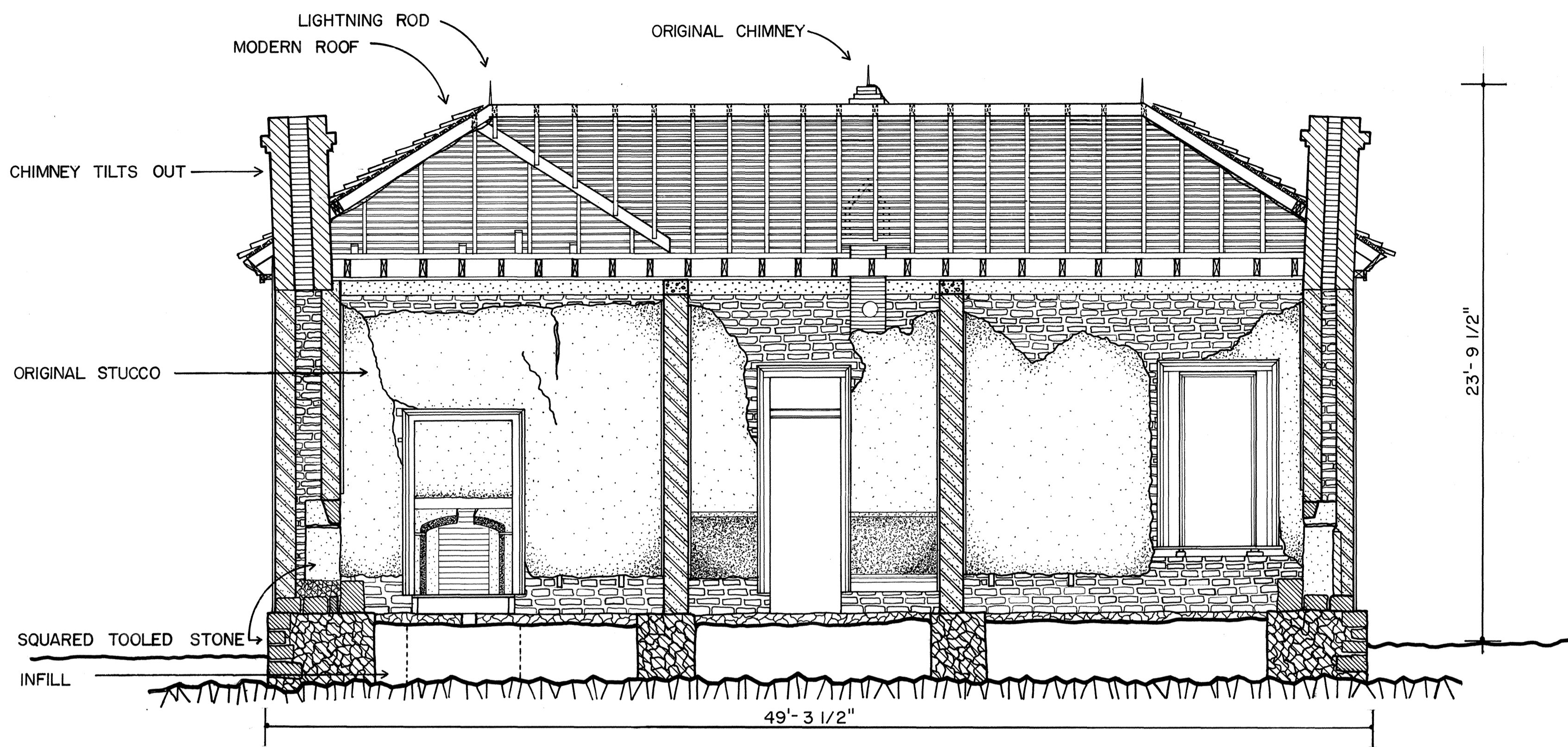
FORT DAVIS RECORDING TEAM - 1989  
NATIONAL PARK SERVICE  
UNITED STATES DEPARTMENT OF THE INTERIOR

NAME AND LOCATION OF STRUCTURE  
**FORT DAVIS NATIONAL HISTORIC SITE (48-12) CAPTAIN'S QUARTERS - 1867-1871**  
ON THE NORTH END OF OFFICERS' ROW  
FORT DAVIS  
JEFF DAVIS COUNTY  
TEXAS

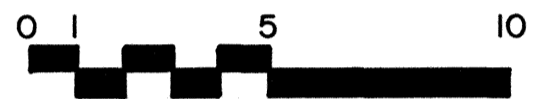
SURVEY NO.  
TX-3368

HISTORIC AMERICAN  
BUILDINGS SURVEY  
SHEET 2 OF 3 SHEETS

LIBRARY OF CONGRESS  
INDEX NUMBER

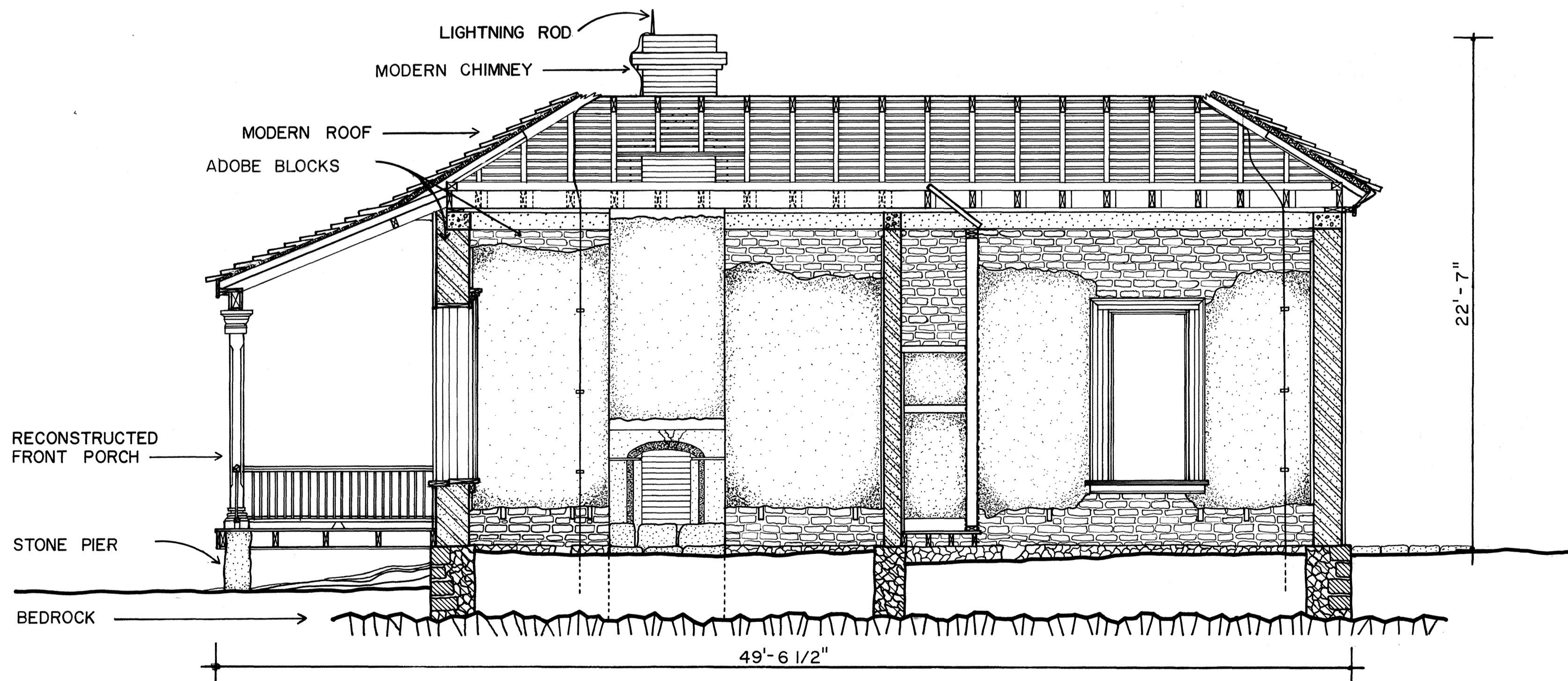


SCALE IN FEET:

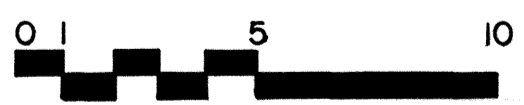


SECTION A-A

SCALE IN METERS:



SCALE IN FEET:



SECTION B-B

SCALE IN METERS:



DRAWN BY ROBERT R. ARZOLA

FORT DAVIS RECORDING TEAM  
NATIONAL PARK SERVICE  
UNITED STATES DEPARTMENT OF THE INTERIOR

NAME AND LOCATION OF STRUCTURE  
**FORT DAVIS NATIONAL HISTORIC SITE (HB-12) CAPTAIN'S QUARTERS - 1867-1871**  
ON THE NORTH END OF OFFICERS' ROW  
JEFF DAVIS COUNTY TEXAS

SURVEY NO.  
TX-3368

HISTORIC AMERICAN  
BUILDINGS SURVEY  
SHEET 3 OF 3 SHEETS

LIBRARY OF CONGRESS  
INDEX NUMBER