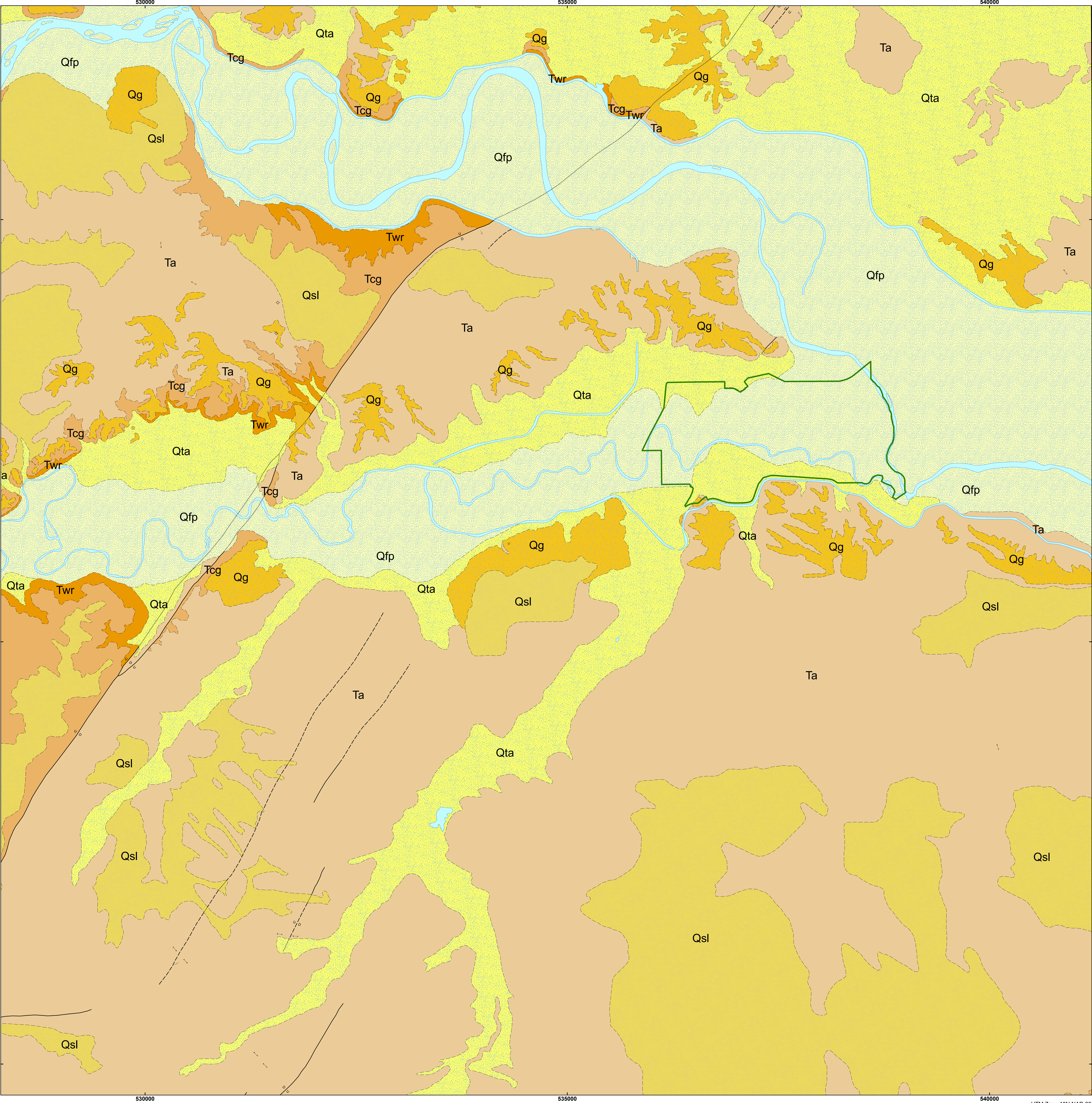




Geologic Map of Fort Laramie National Historic Site



Full Extent of Digital Data, Area of Detail in Red

NPS Boundary

Mine Point Features

- gravel pit
- dry hole
- dry hole with show of oil
- water sample locality

Geologic Attitude and Observation Localities

- strike and dip of beds
- apparent dip of beds
- dip of fault plane
- upthrown side of fault
- downthrown side of fault

Faults

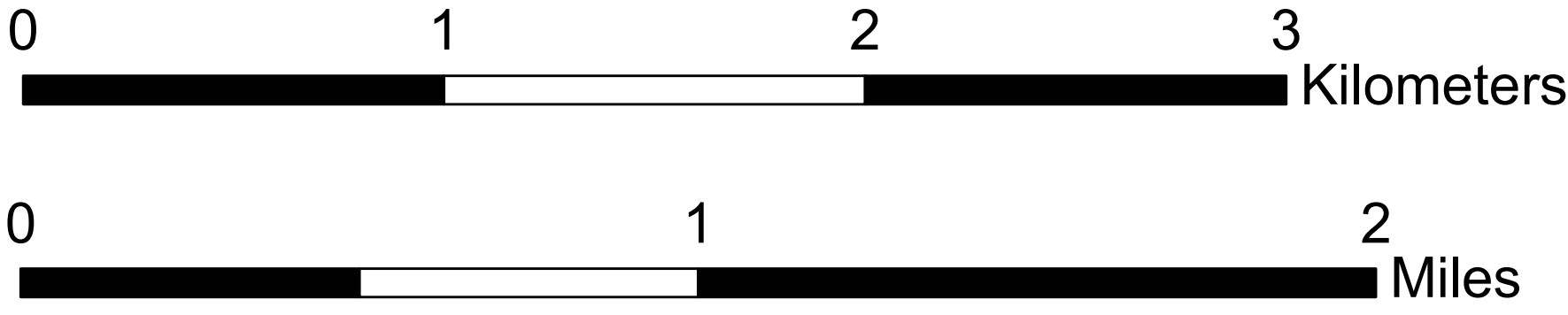
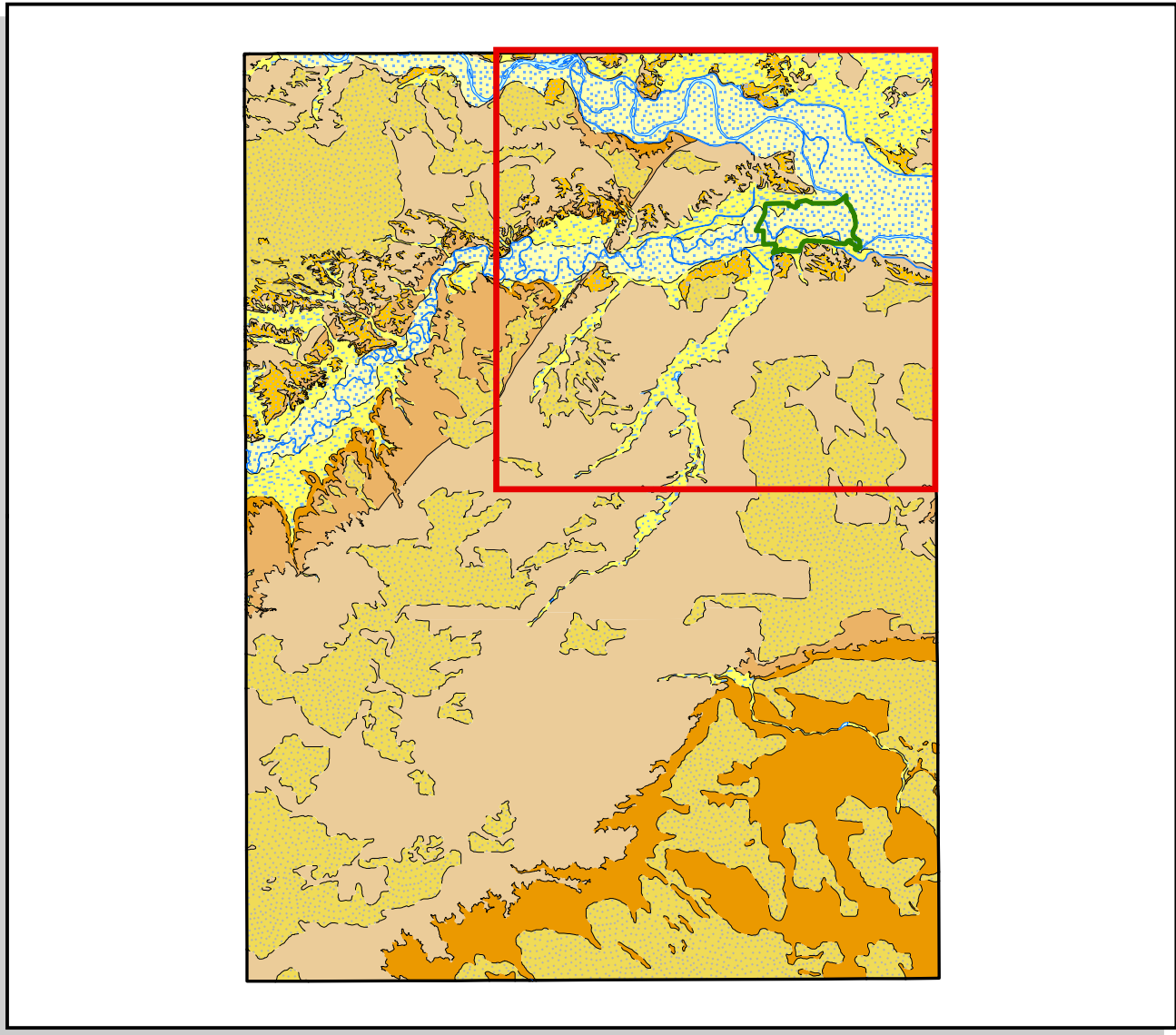
- unknown offset/displacement fault, inferred
- high-angle fault, known or certain
- high-angle fault, approximate
- high-angle fault, concealed

Geologic Contacts

- known or certain
- approximate
- inferred
- map boundary
- water/shoreline

Geologic Units

- water
- Qfp - flood plain deposits
- Qta - tributary valley alluvium
- Qsl - sand and loess
- Qg - gravel
- Ta - Anikaree Formation
- Tcg - unnamed conglomerate
- Twr - White River Formation



This map graphically presents digital geologic data prepared as part of the NPS Geologic Resources Division's Geologic Resources Inventory. The source map used in creation of the digital geologic data product was:
McGrew, Laura W. 1963. *Geology of the Fort Laramie area, Platte and Goshen Counties, Wyoming* Scale 1:31,680, Bulletin 1141-F, U.S. Geological Survey.
Digital geologic data and cross sections for Fort Laramie National Historic Site, and all other digital geologic data prepared as part of the Geologic Resources Inventory, are available online at the NPS Data Store:
<http://science.nature.nps.gov/nrddata/>