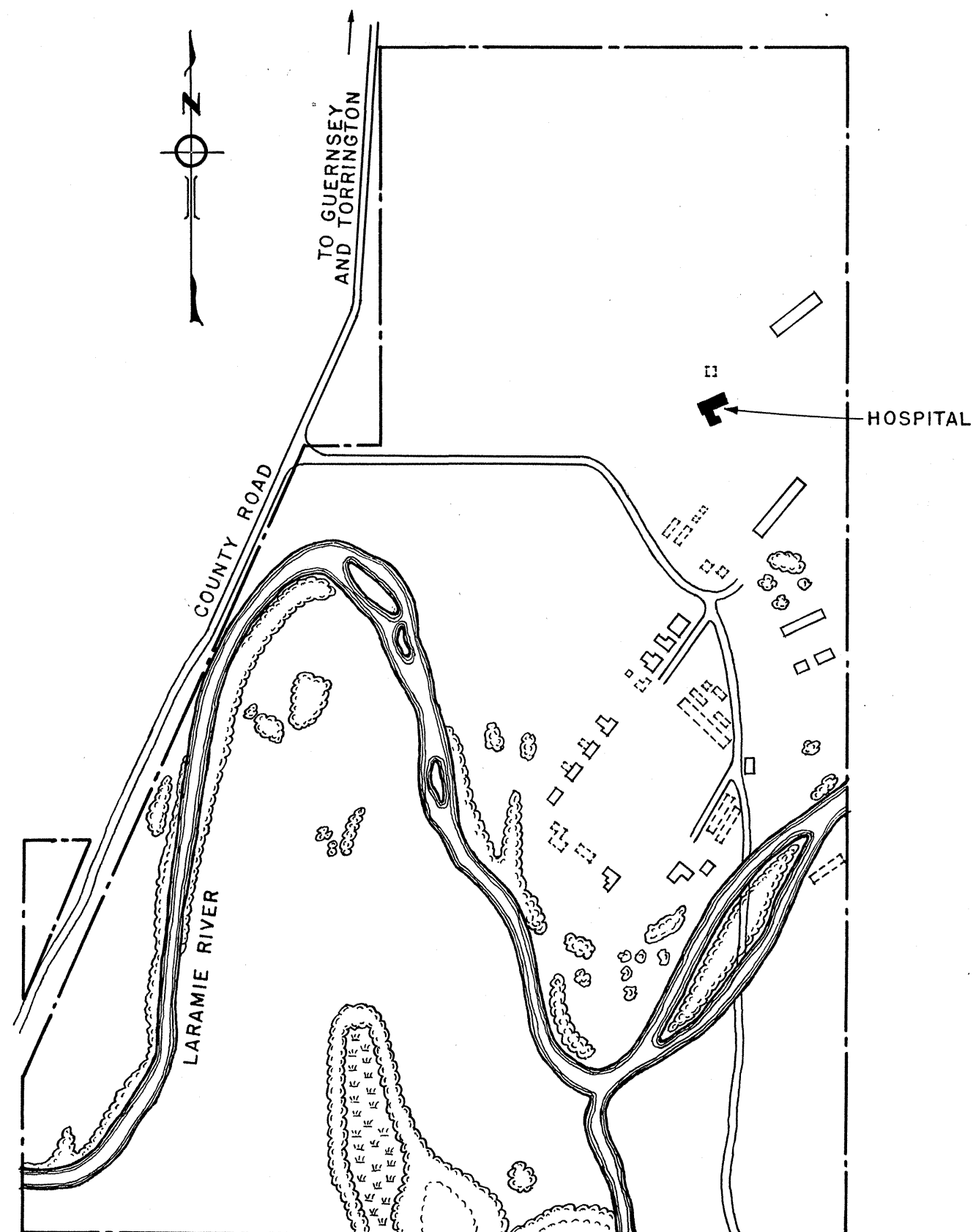


# HOSPITAL

FORT LARAMIE NATIONAL MONUMENT  
WYOMING



MAP OF FORT LARAMIE NATIONAL MONUMENT  
SHOWING LOCATION

ERECTED IN 1873  
DESIGNED & BUILT BY  
U.S. ARMY ENGINEERS

HISTORIC AMERICAN BUILDINGS SURVEY  
U. S. DEPARTMENT OF THE INTERIOR  
NATIONAL PARK SERVICE  
BRANCH OF PLANS AND DESIGN

MEASURED: AUG. 1940, MAY 1942

DRAWN: JULY 1942

MEASUREMENTS CHECKED:

DRAWINGS APPROVED: *John G. Meem*

DRAWINGS APPROVED: *Wm. I. Williams*

ACCEPTED FOR LIBRARY OF CONGRESS:

DISTRICT OFFICER.

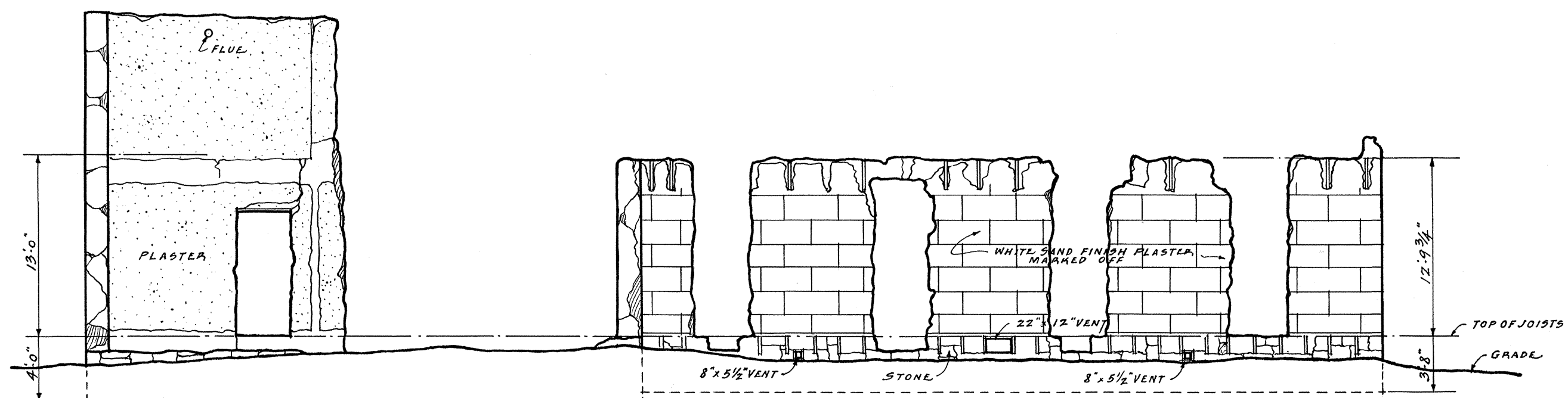
CHIEF ARCHITECT.

COLORADO DIST. WYOMING AREA  
JOHN GAW MEEM - DIST. OFFICER  
SUNMOUNT, SANTA FE, NEW MEXICO  
FIELD PARTY  
WILFRED G. HILL - ASSOC. ARCHT.  
WM. I. WILLIAMS - ASST. ARCHT.

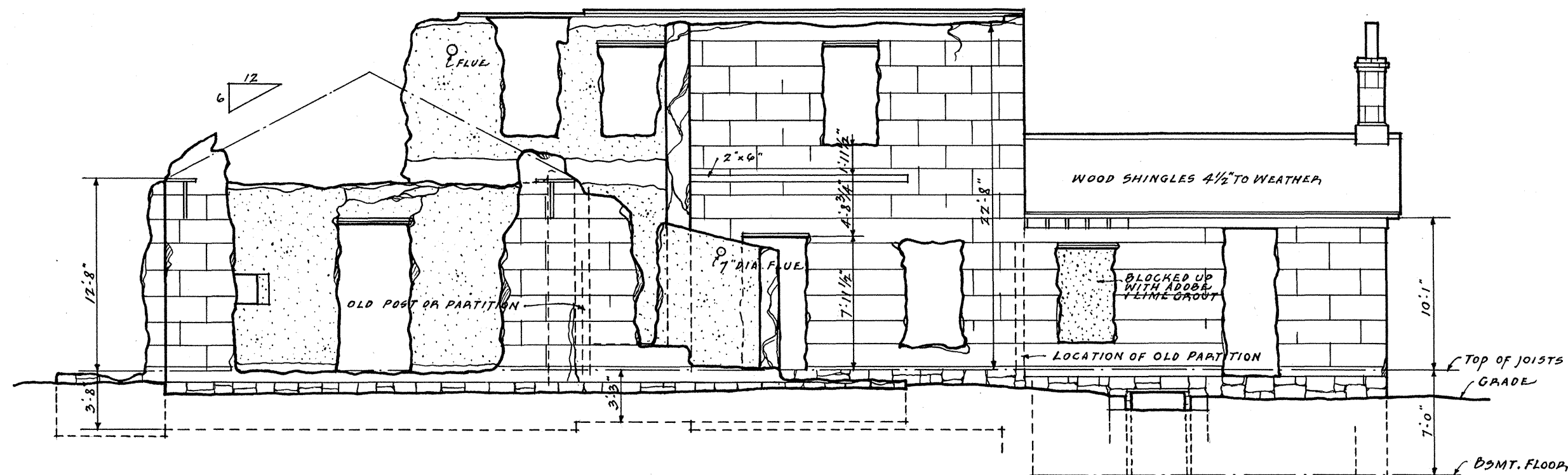
SURVEY NO.  
WYO-13  
SHEETS 1-3

INDEX NO.  
WYO.  
8-13-

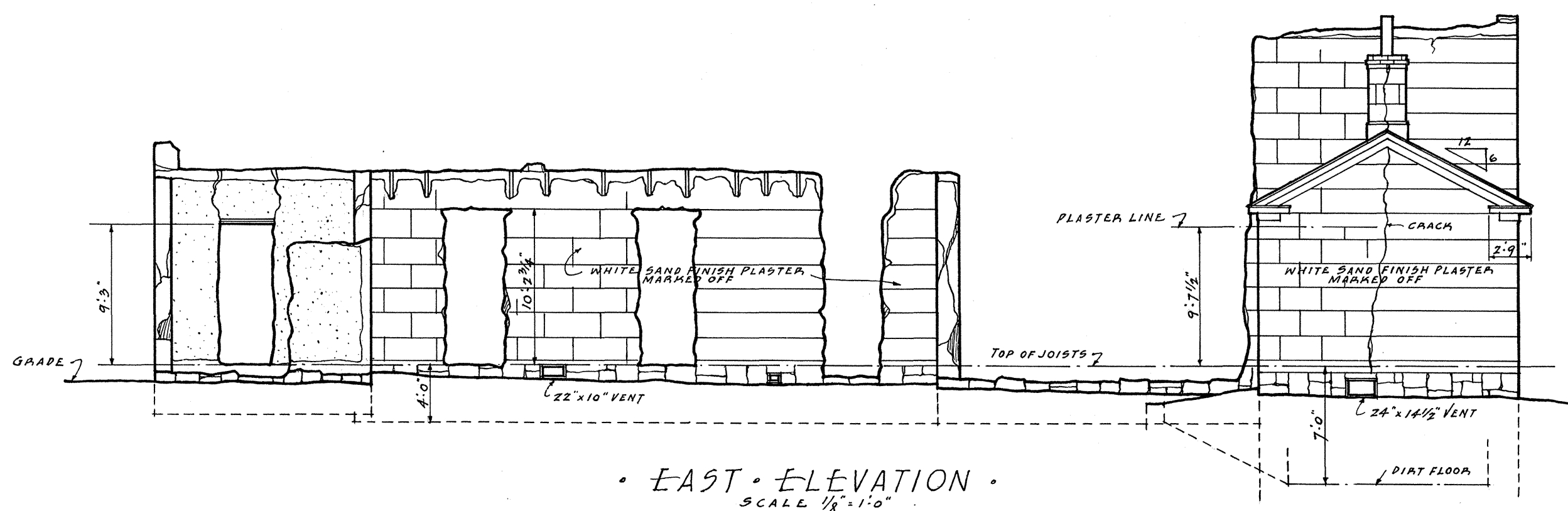




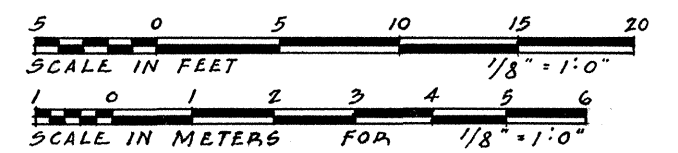
• WEST • ELEVATION •  
SCALE 1/8" = 1'-0"



• SOUTH • ELEVATION •  
SCALE 1/8" = 1'-0"



• EAST • ELEVATION •  
SCALE 1/8" = 1'-0"



WILLIAM I. WILLIAMS • DEL.

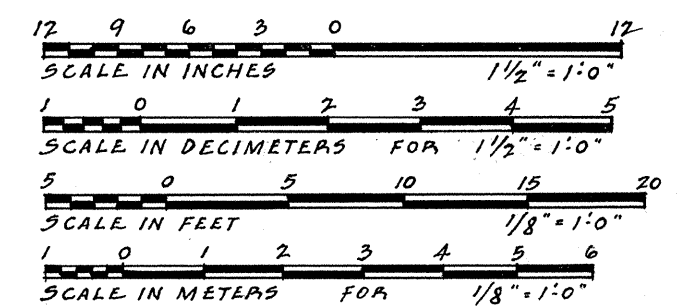
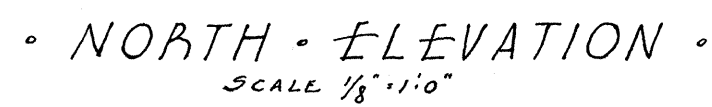
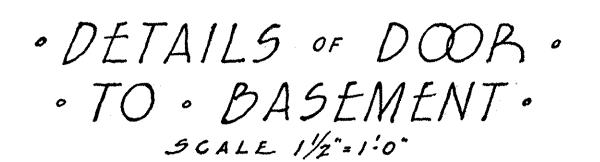
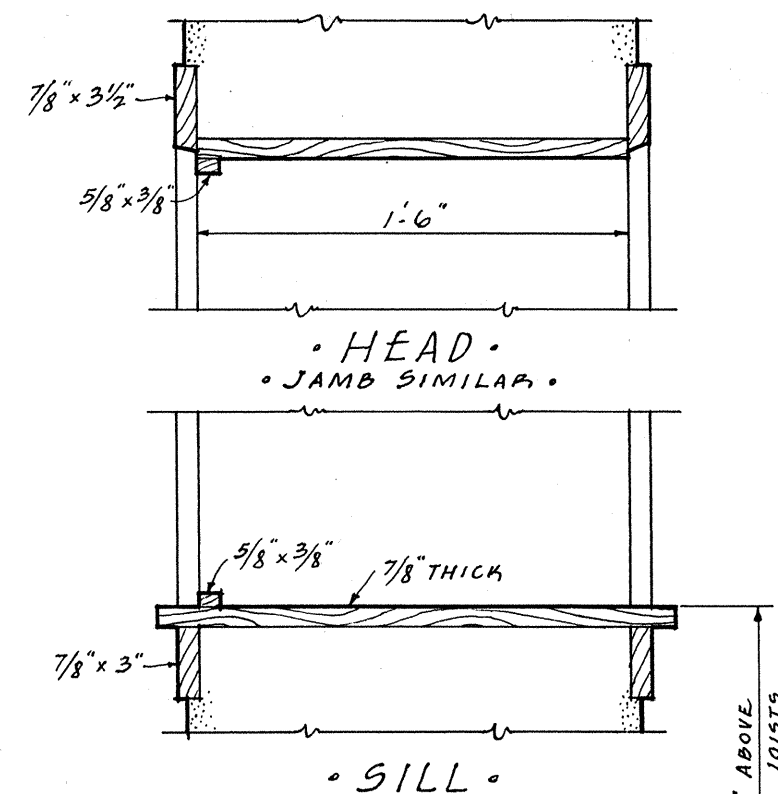
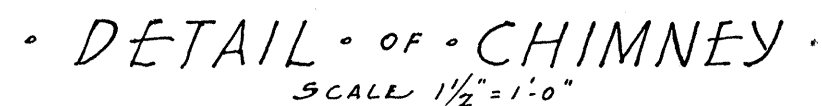
UNDER DIRECTION OF UNITED STATES DEPARTMENT OF THE INTERIOR  
NATIONAL PARK SERVICE, BRANCH OF PLANS AND DESIGN

NAME OF STRUCTURE  
**HOSPITAL**  
FORT LARAMIE NATIONAL MONUMENT

SURVEY NO.  
WYO-13

HISTORIC AMERICAN  
BUILDINGS SURVEY  
SHEET 2 OF 3 SHEETS

LIBRARY OF CONGRESS  
INDEX NUMBER



LIBRARY OF CONGRESS  
INDEX NUMBER



MAJOR-UTAH-NAVY











