

HOSPITAL

BUILDING NO. 57

FORT UNION

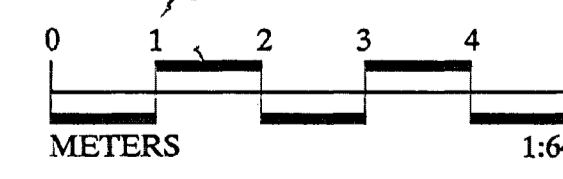
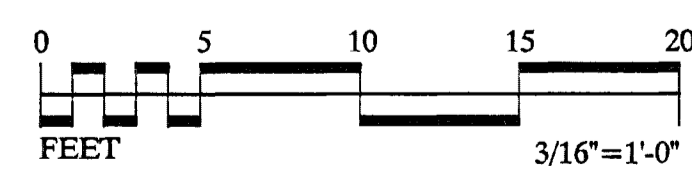
THE FIRST PHASE OF THE FORT UNION HOSPITAL WAS COMPLETED IN 1864, AND WITHIN THREE YEARS THE BUILDING HAD BEEN ENLARGED TO ITS FINAL SIZE. IT WAS DESIGNED AS THREE PARALLEL "HOUSES", SEPARATED BY PASSAGES, WITH A CENTER HALL RUNNING LONGITUDINALLY THROUGH THE BUILDING. THE HOSPITAL'S SIX WARDS HAD A TOTAL CAPACITY OF 36 BEDS. THE BUILDING WAS CONSTRUCTED OF ADOBE WALLS ON SANDSTONE FOUNDATIONS, WITH BRICK USED FOR THE FIREPLACES AND CHIMNEYS. WOOD FRAMING WAS USED TO SUPPORT THE FLOORS AND THE PITCHED, GABLE-END ROOF, WHICH WAS SHINGLED. A WOOD FRAME PORCH RAN ALONG THE ENTIRE SOUTH FACADE OF THE HOSPITAL.

DOCUMENTATION OF FORT UNION WAS UNDERTAKEN BY THE HISTORIC AMERICAN BUILDINGS SURVEY / HISTORIC AMERICAN ENGINEERING RECORD (HABS/HAER) DIVISION OF THE NATIONAL PARK SERVICE (NPS), E. BLAINE CLIVER, CHIEF. THE PROJECT WAS SPONSORED BY FORT UNION NATIONAL MONUMENT (FOWN), NPS, GEORGE HELFRICH, ACTING SUPERINTENDENT. PROJECT PLANNING WAS COORDINATED BY PAUL DOLINSKY, CHIEF, HABS; AND BY BOB HARTZLER, EXHIBIT SPECIALIST, FOWN. THE FIELD WORK WAS UNDERTAKEN AND THE MEASURED DRAWINGS WERE PRODUCED BY PROJECT SUPERVISOR MARK SCHARA, HABS ARCHITECT; BY HABS ARCHITECT RAUL VAZQUEZ; AND BY ARCHITECTS EDWARD L. BYRDY JR. (CATHOLIC UNIVERSITY OF AMERICA) AND JENNIFER L. MOST (MASSACHUSETTS INSTITUTE OF TECHNOLOGY).

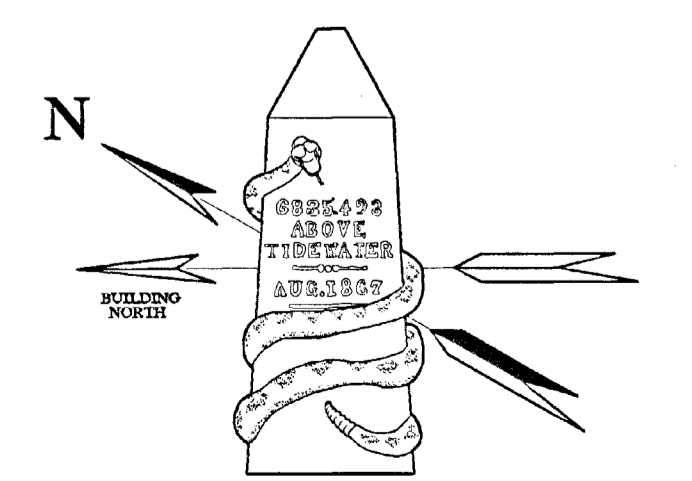


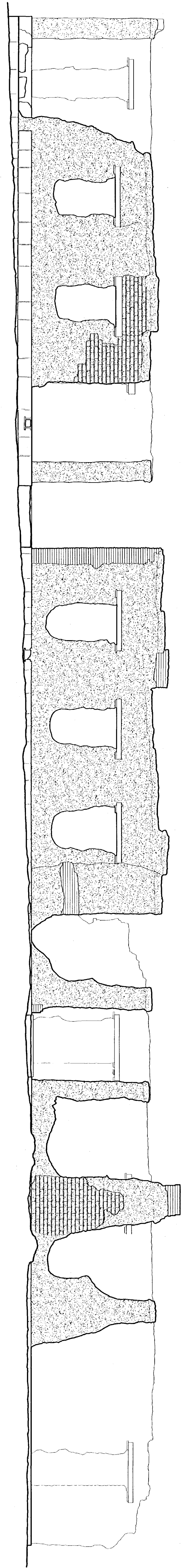
PLAN

3/16" = 1'-0" 1:64

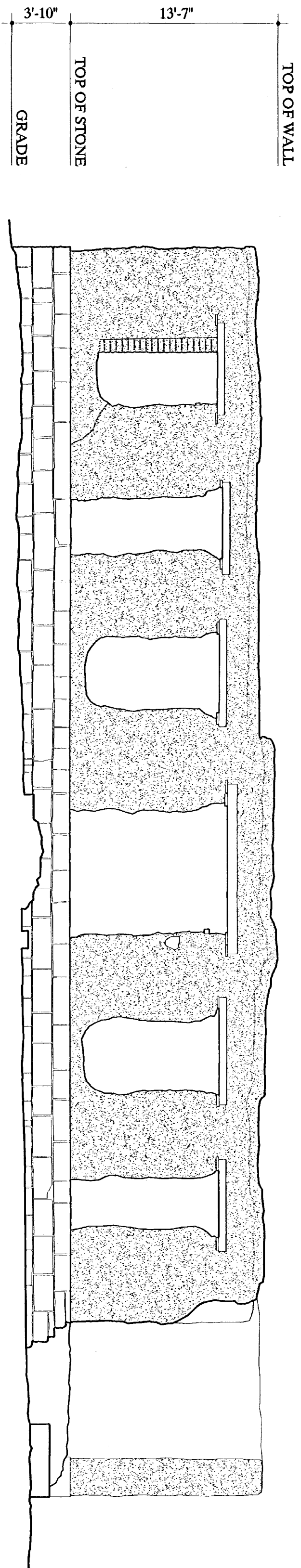


NOTE: ROOM NAMES TAKEN FROM ORIGINAL (1878) CONSTRUCTION DRAWING

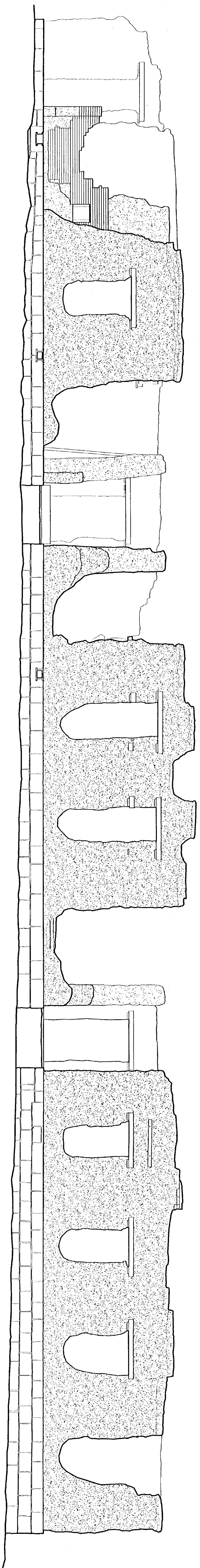




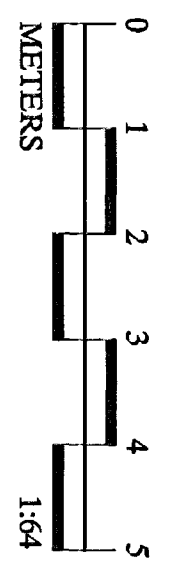
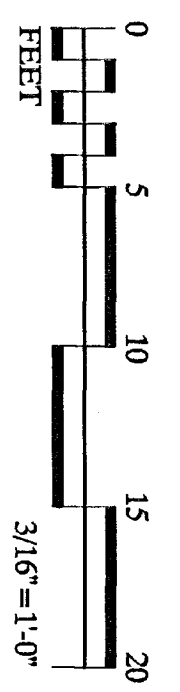
EAST ELEVATION
 3/16" = 1'-0"
 154



SOUTH ELEVATION
 3/16" = 1'-0"
 154



WEST ELEVATION
 3/16" = 1'-0"
 154



DRAWN BY: EDWARD L. BYRDY JR.

FORT UNION PROJECT, 2001
 NATIONAL PARK SERVICE
 UNITED STATES DEPARTMENT OF THE INTERIOR

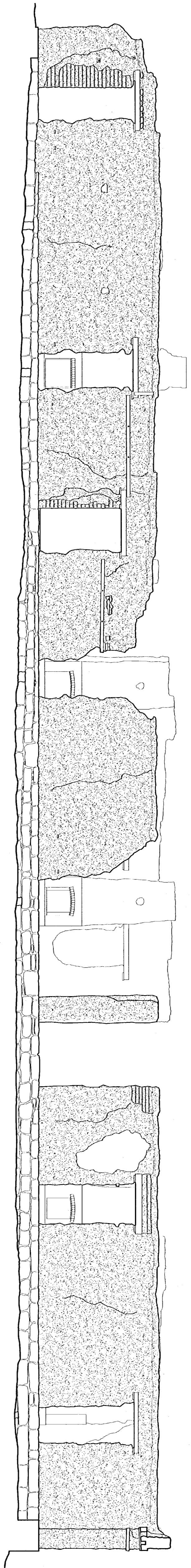
STATE HIGHWAY 161

FORT UNION · HOSPITAL
 WATROUS VICINITY MORA COUNTY
 NEW MEXICO

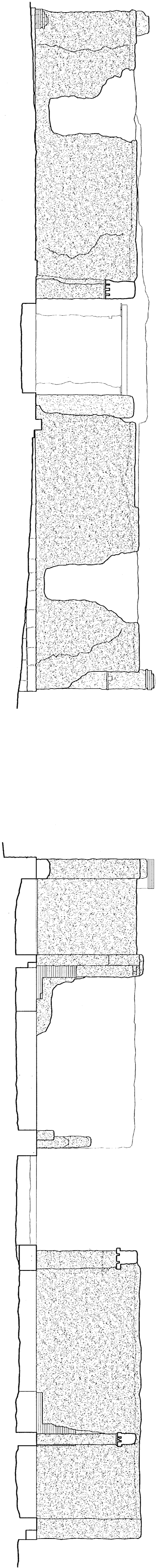
SHEET 2
 OF 3 SHEETS

HISTORIC AMERICAN
 BUILDINGS SURVEY
 NM-164-BB

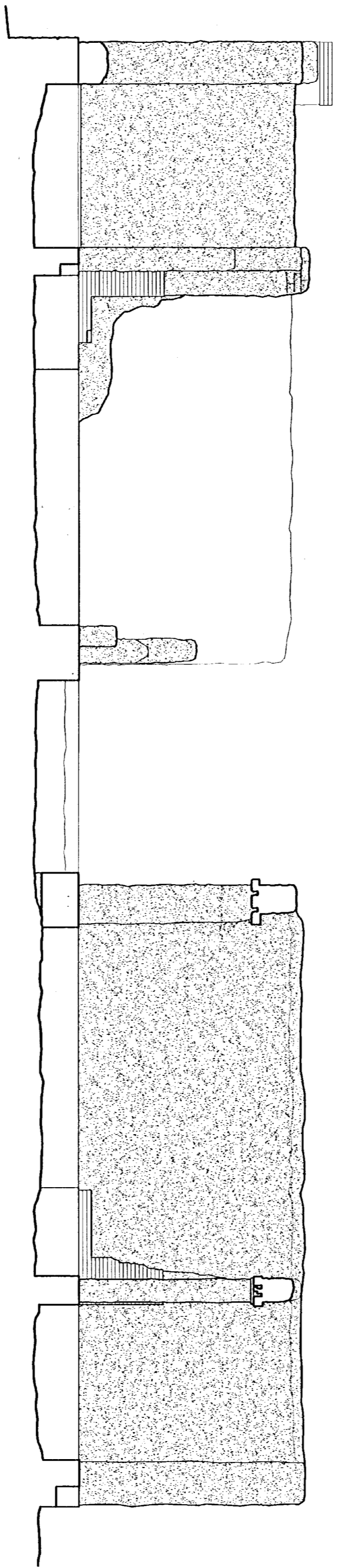
LIBRARY OF
 CONGRESS
 PHOTODUPLICATION
 SERVICE



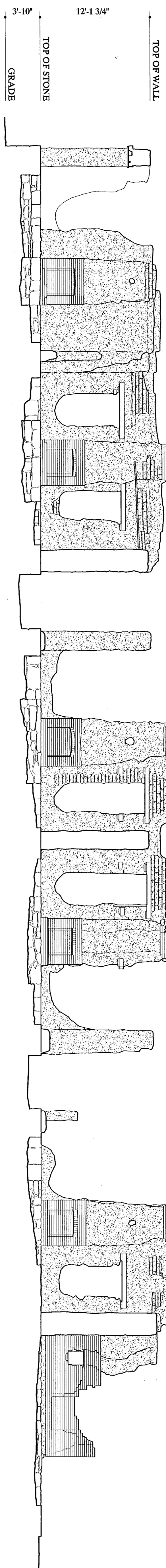
SECTION A-A
3/16" = 1'-0"
154



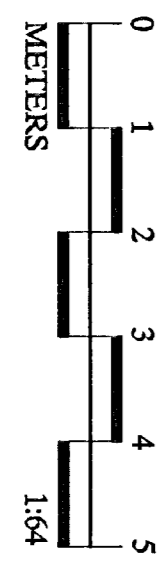
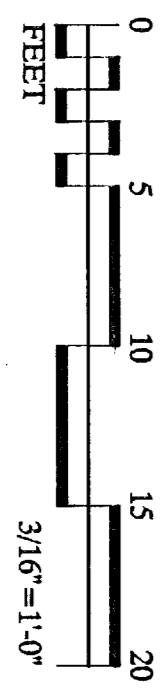
SECTION Y-Y
3/16" = 1'-0"
154



SECTION Z-Z
3/16" = 1'-0"
154



SECTION B-B
3/16" = 1'-0"
154



DRAWN BY: EDWARD L. BYRDY JR.

FORT UNION PROJECT, 2001
NATIONAL PARK SERVICE
UNITED STATES DEPARTMENT OF THE INTERIOR

STATE HIGHWAY 161

FORT UNION · HOSPITAL
WATROUS VICINITY
MORA COUNTY

NEW MEXICO

SHEET 3
OF 3 SHEETS

HISTORIC AMERICAN
BUILDINGS SURVEY
NM-161-BB

LIBRARY OF
CONGRESS
DIGITIZED BY
DICK WATKINS

ROSENTHAL 825
HARRIS





100-3111-57

HABS. NCL. 14 (P.B. 3)

PRESENTATION B 21
MUSEE

