

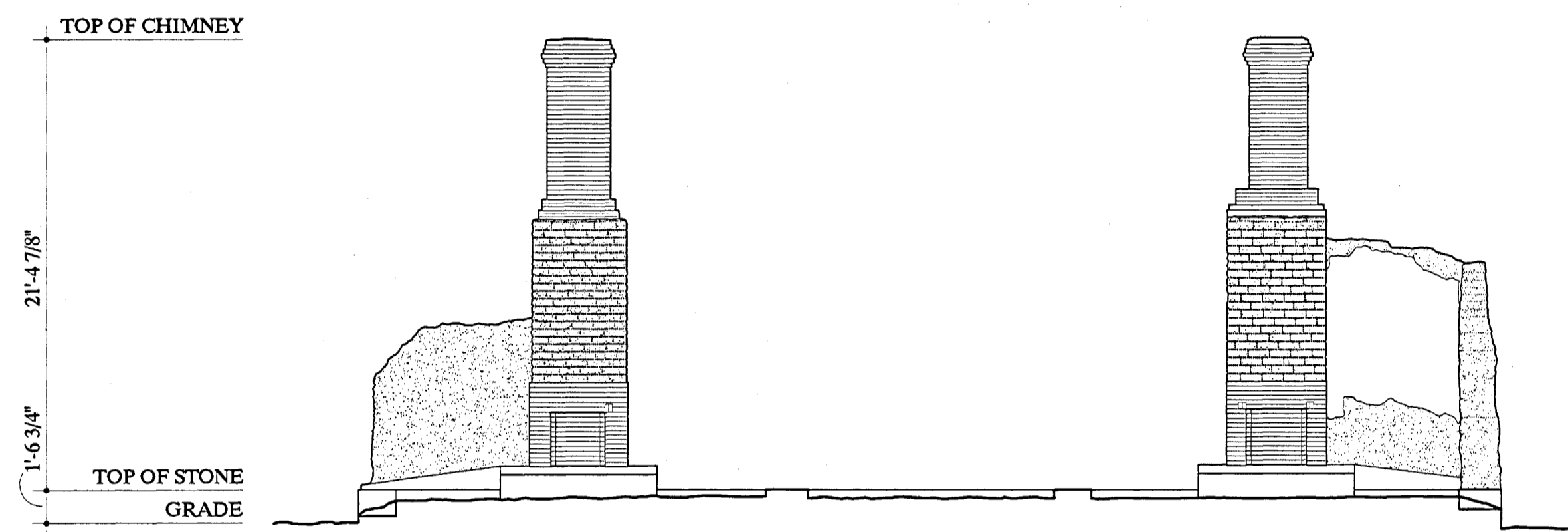
OFFICERS' QUARTERS

BUILDING NO. 9

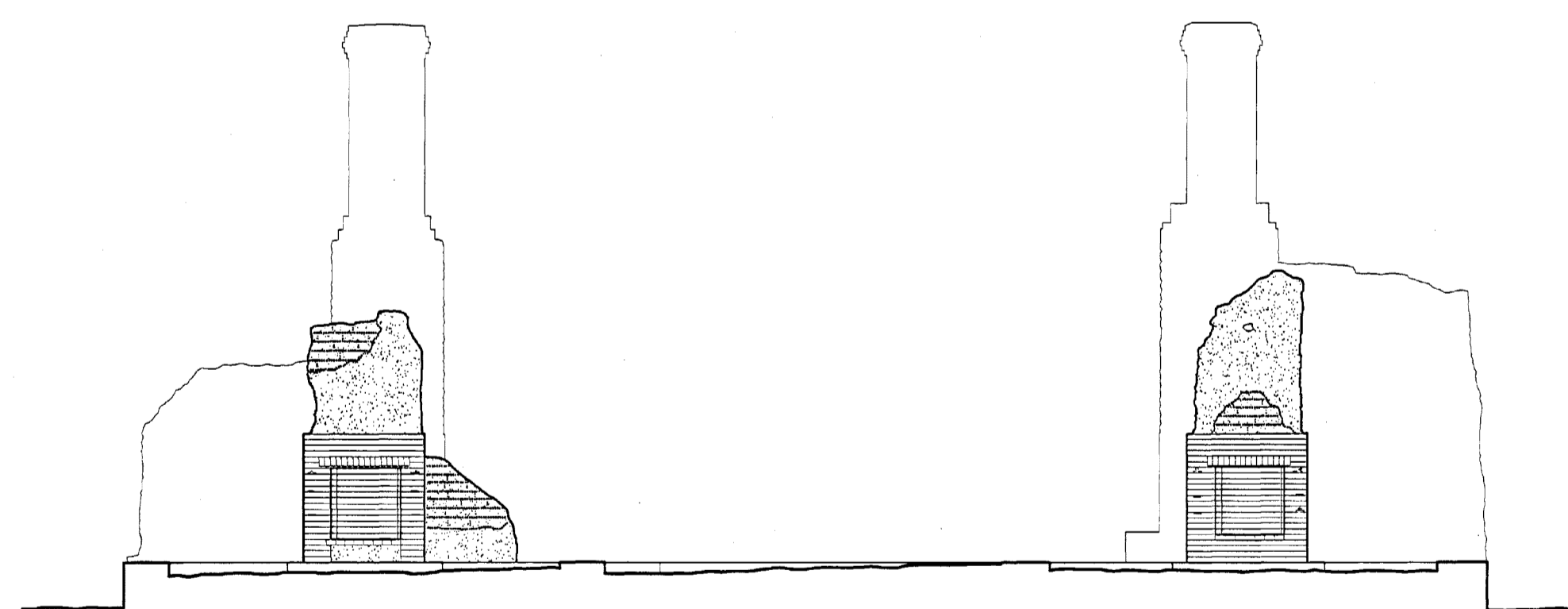
FORT UNION

EIGHT IDENTICAL QUARTERS FOR JUNIOR OFFICERS WERE ERECTED AT FORT UNION 1864-67. BUILT IN THE TERRITORIAL STYLE, THEY WERE CONSTRUCTED OF ADOBE WALLS ON SANDSTONE FOUNDATIONS, TOPPED WITH A BRICK COPING. EACH WAS FRONTED WITH A COVERED PORCH SUPPORTED BY WOOD COLUMNS ON STONE PIERS. FIREPLACES AND CHIMNEYS WERE BUILT OF BRICK. INTERIOR WALLS AND CEILINGS WERE PLASTERED, ALTHOUGH IN THE EARLY 1870s THE PLASTERED CEILINGS WERE REPLACED WITH WOOD. SYMMETRICAL IN PLAN, THE QUARTERS WERE DESIGNED SO THAT TWO OFFICERS COULD SHARE A BUILDING, ALTHOUGH RANKING OFFICERS OFTEN CHOSE TO OCCUPY A SINGLE BUILDING BY THEMSELVES. THE WIDE CENTER HALLS OF THE OFFICERS' QUARTERS WERE THE SCENES OF MANY SOCIAL EVENTS OVER THE COURSE OF THE FORT'S HISTORY.

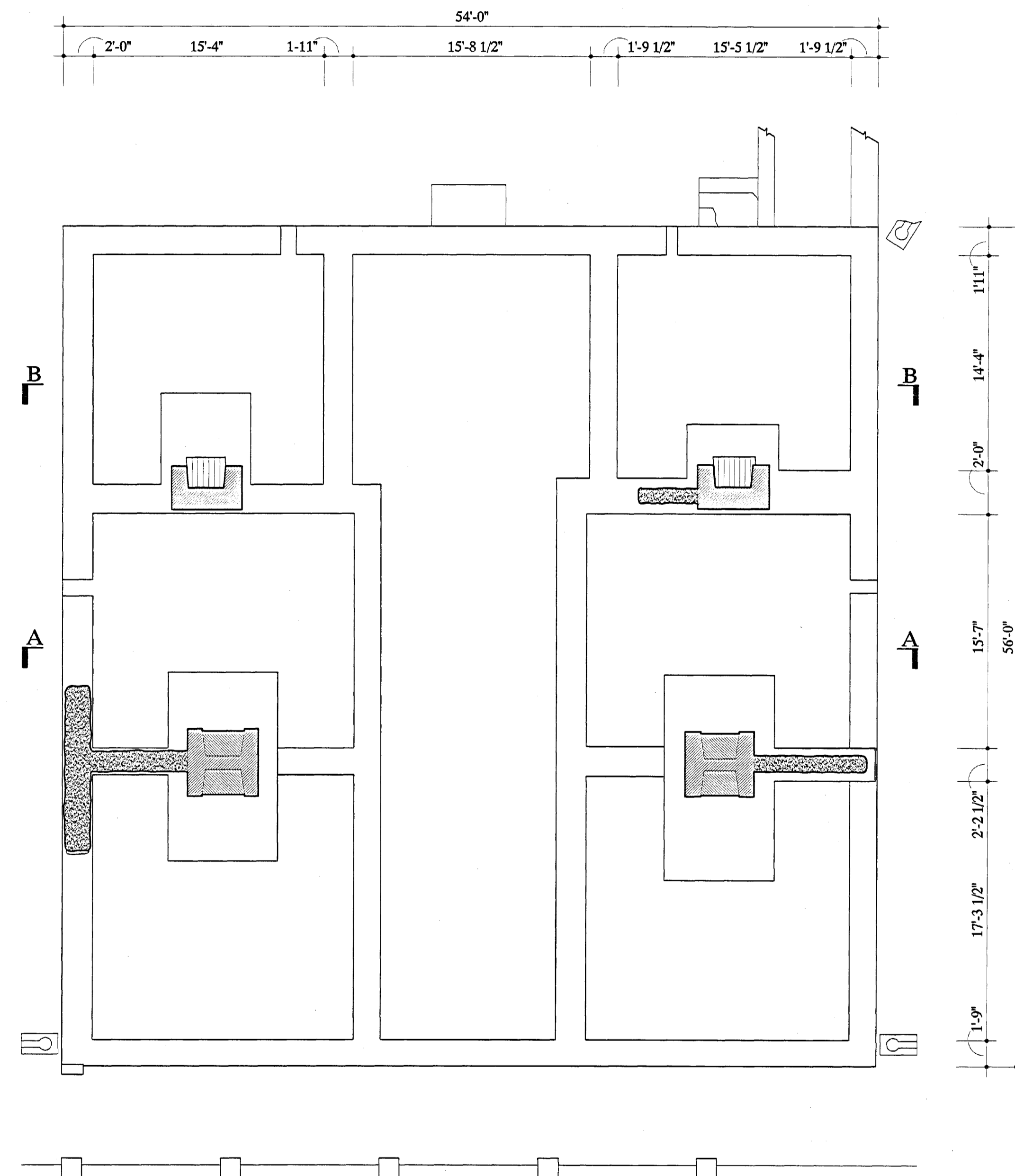
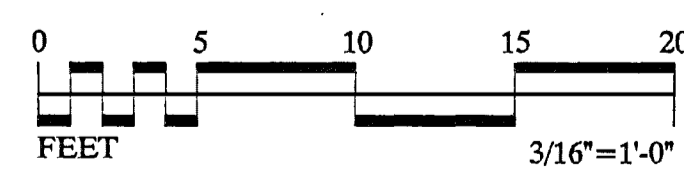
DOCUMENTATION OF FORT UNION WAS UNDERTAKEN BY THE HISTORIC AMERICAN BUILDINGS SURVEY / HISTORIC AMERICAN ENGINEERING RECORD (HABS/HAER) DIVISION OF THE NATIONAL PARK SERVICE (NPS), E. BLAINE CLIVER, CHIEF. THE PROJECT WAS SPONSORED BY FORT UNION NATIONAL MONUMENT (FOWN), NPS, GEORGE HELFRICH, ACTING SUPERINTENDENT. PROJECT PLANNING WAS COORDINATED BY PAUL DOLINSKY, CHIEF, HABS; AND BY BOB HARTZLER, EXHIBIT SPECIALIST, FOWN. THE FIELD WORK WAS UNDERTAKEN AND THE MEASURED DRAWINGS WERE PRODUCED BY PROJECT SUPERVISOR MARK SCHARA, HABS ARCHITECT; BY HABS ARCHITECT RAUL VAZQUEZ, AND BY ARCHITECTS EDWARD L. BYRDY JR. (CATHOLIC UNIVERSITY OF AMERICA) AND JENNIFER L. MOST (MASSACHUSETTS INSTITUTE OF TECHNOLOGY).



SECTION A-A
3/16"=1'-0" 1:64



SECTION B-B
3/16"=1'-0" 1:64



PLAN
3/16"=1'-0" 1:64

