

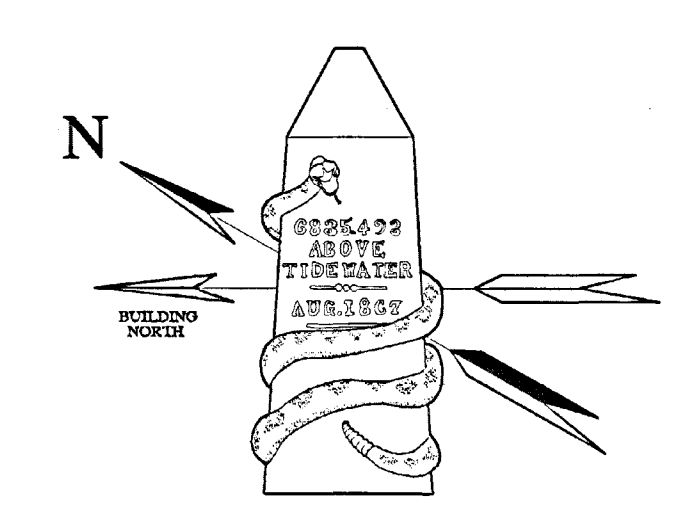
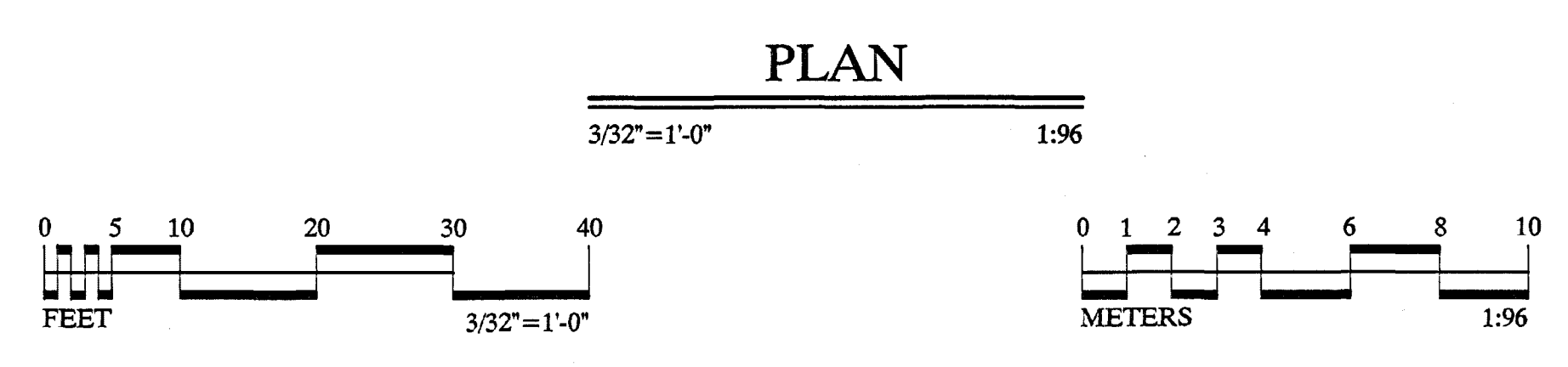
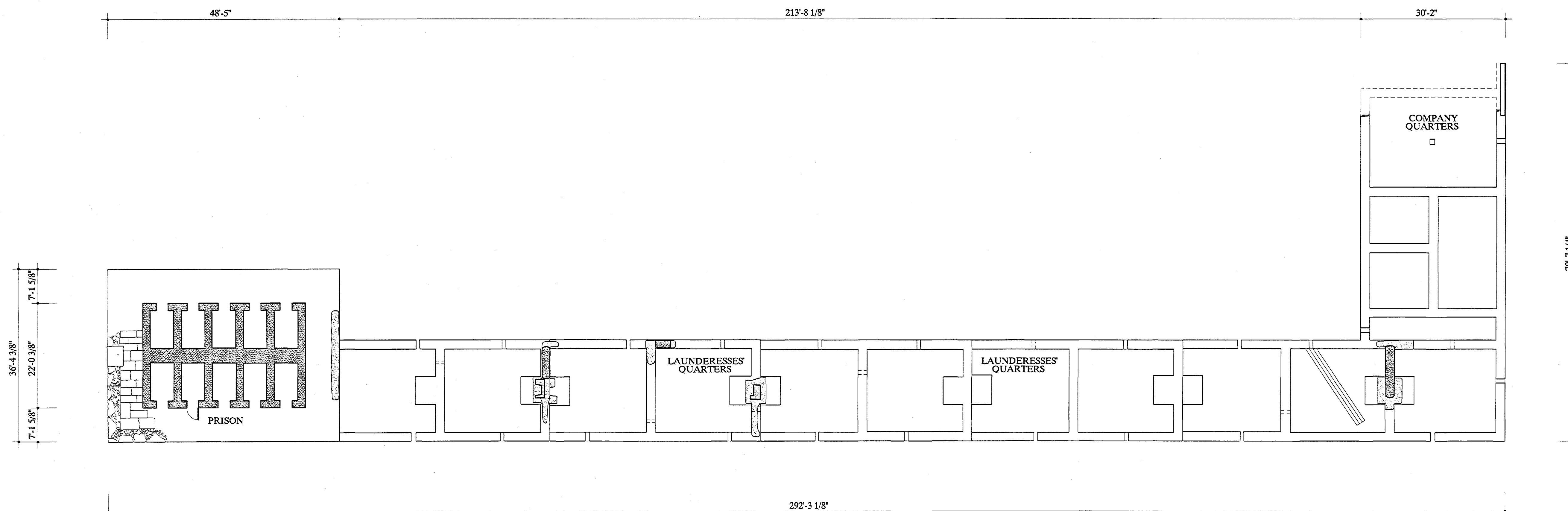
COMPANY QUARTERS, PRISON & LAUNDRESSES' QUARTERS

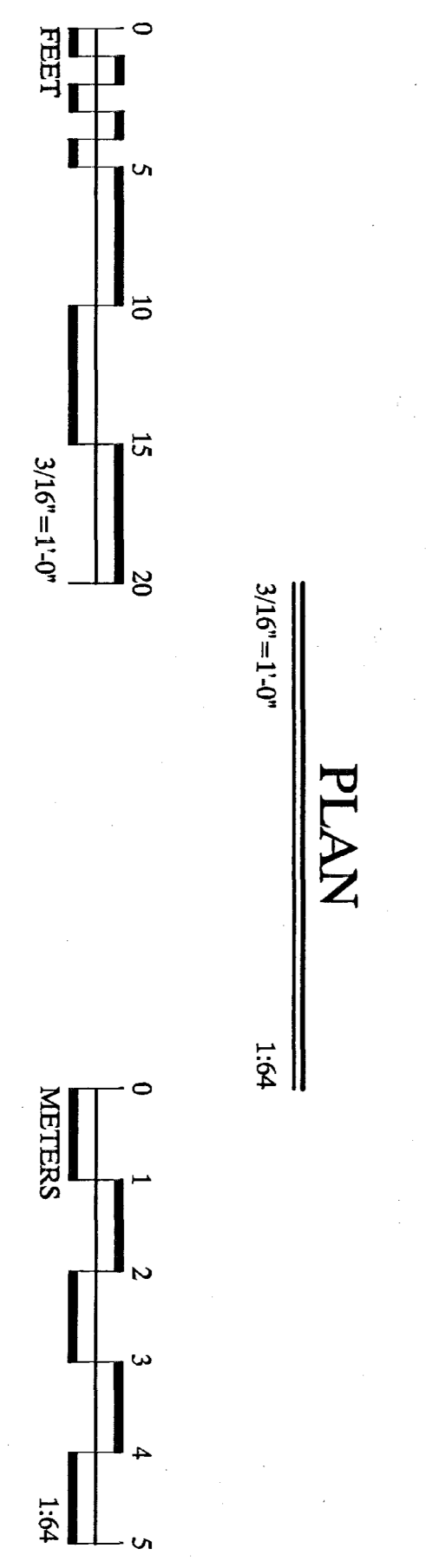
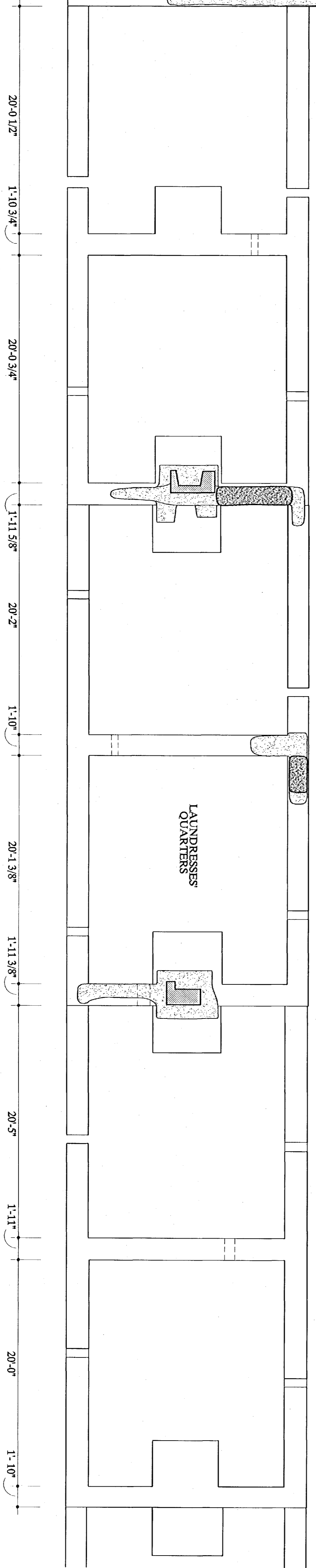
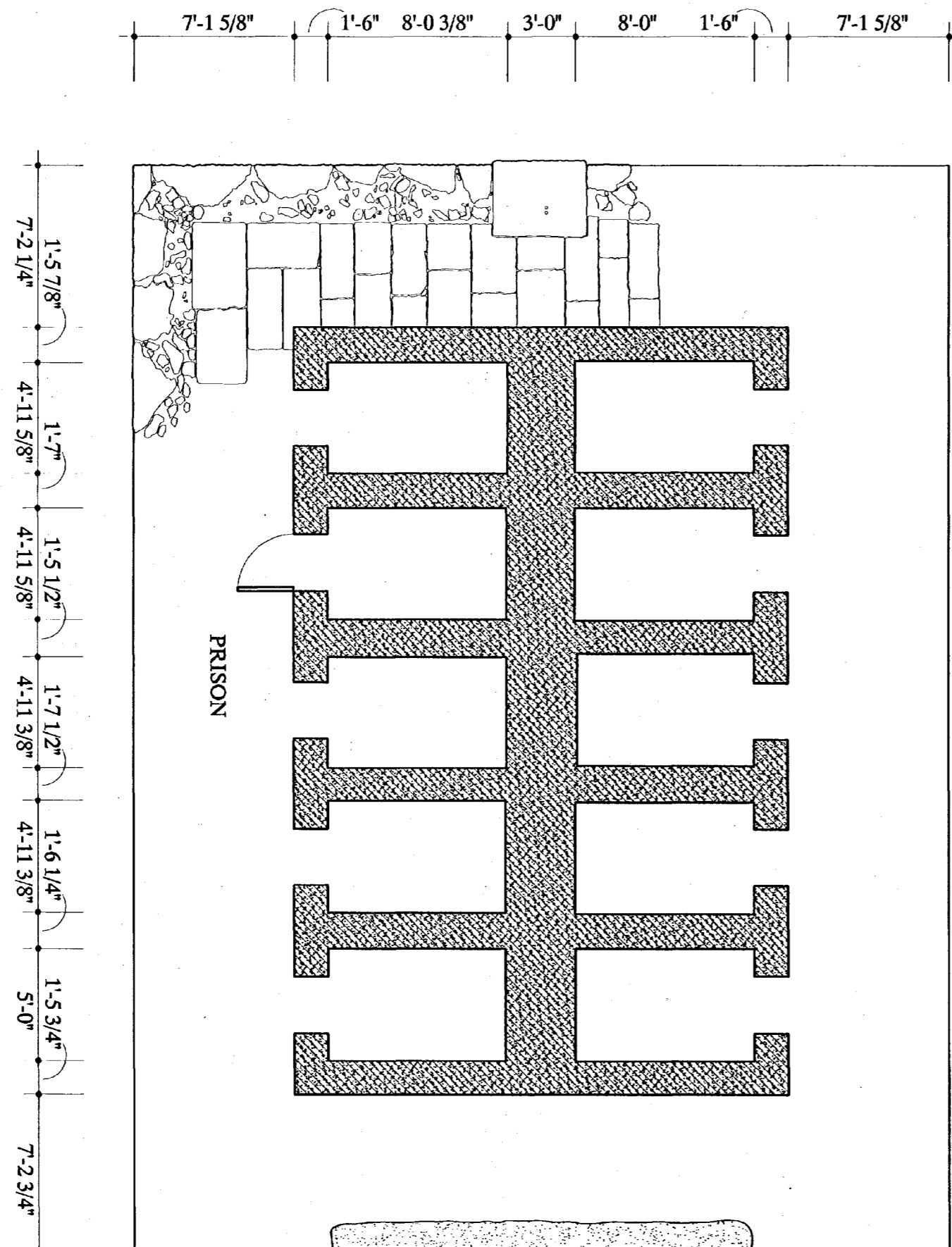
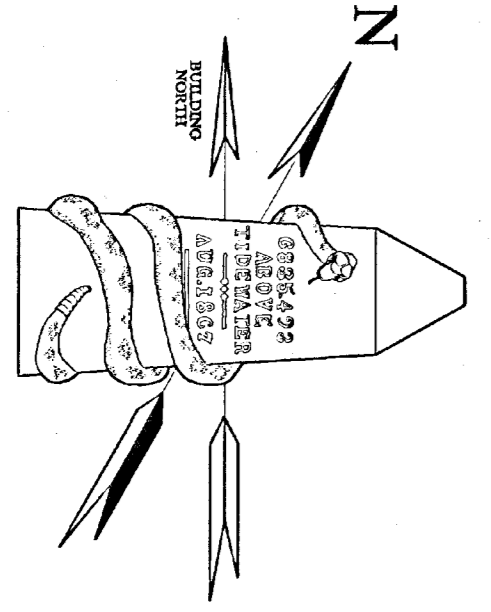
BUILDINGS NO. 15-17

FORT UNION

THIS STRUCTURE, BUILT 1867-68, DEFINED THE WEST SIDE OF THE CAVALRY CORRAL AND HOUSED A VARIETY OF FUNCTIONS. THE SOUTH WING ORIGINALLY CONTAINED A PRIVY, A BLACKSMITH'S SHOP, A GRANARY, A HARNESS ROOM, AND QUARTERS AND OFFICES FOR BOTH THE POST QUARTERMASTER AND COMMISSARY SERGEANTS. THE SOUTH WING WAS TRANSFORMED INTO COMPANY QUARTERS IN 1875-76, WHEN FORT UNION WAS EXPANDED FROM A FOUR- TO A SIX-COMPANY POST. A ROW OF ELEVEN ROOMS ALONG THE WEST SIDE OF THE BUILDING, EACH WITH A FIREPLACE, SERVED AS QUARTERS FOR LAUNDRESSES. THE PRISON, IN THE NORTHWEST CORNER, CONSISTED OF A STONE CELL BLOCK OF TEN CELLS, SURROUNDED BY AN ADOBE WALL.

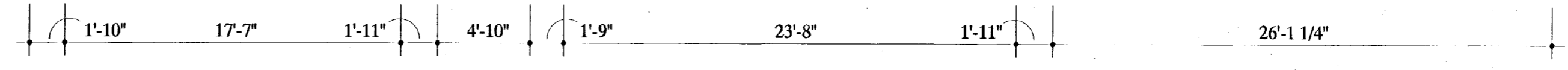
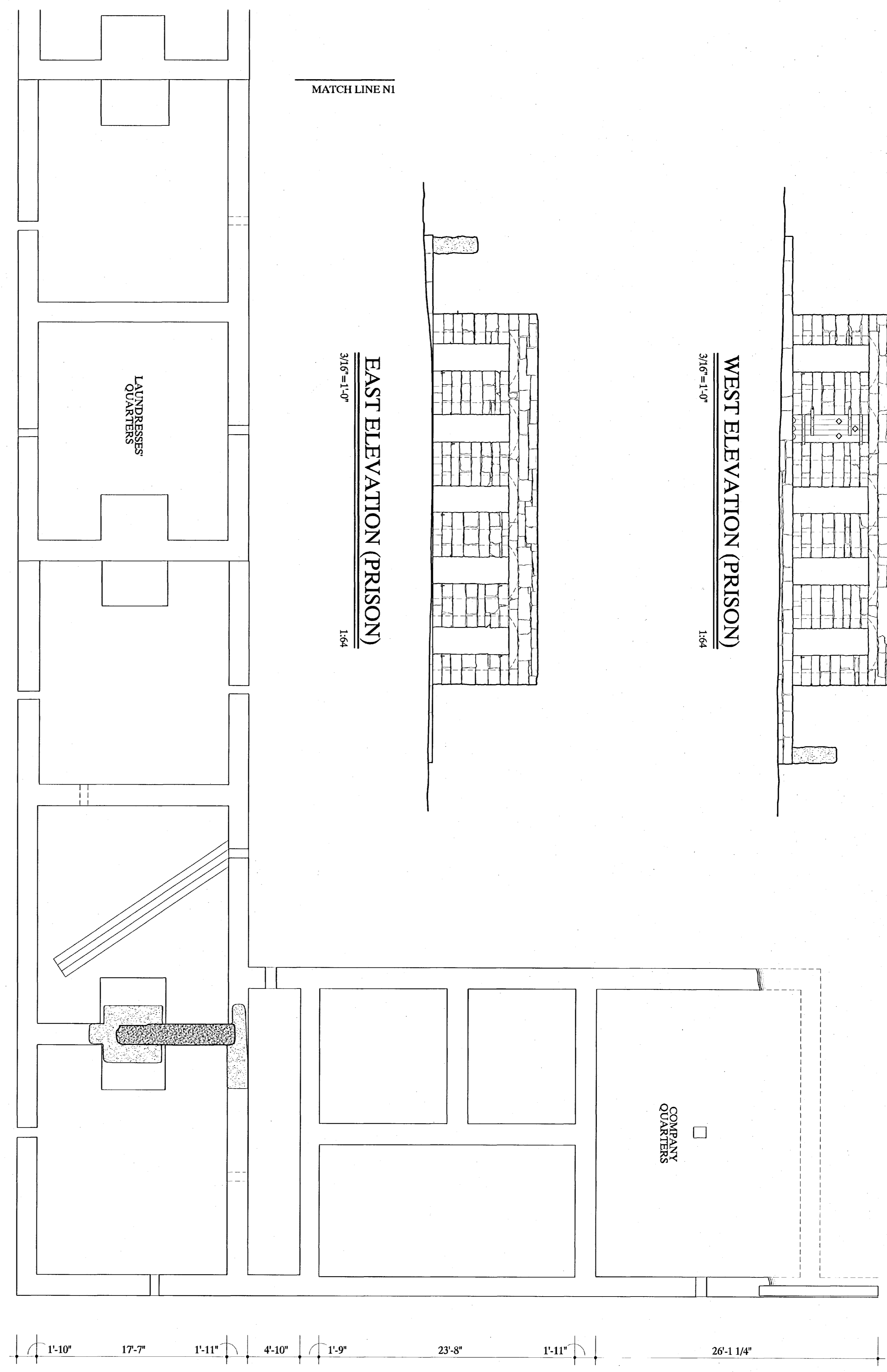
DOCUMENTATION OF FORT UNION WAS UNDERTAKEN BY THE HISTORIC AMERICAN BUILDINGS SURVEY / HISTORIC AMERICAN ENGINEERING RECORD (HABS/HAER) DIVISION OF THE NATIONAL PARK SERVICE (NPS), E. BLAINE CLIVER, CHIEF. THE PROJECT WAS SPONSORED BY FORT UNION NATIONAL MONUMENT (FOUN), NPS, GEORGE HELFRICH, ACTING SUPERINTENDENT (2001); AND DENNIS DITMANSON, SUPERINTENDENT (2002). PROJECT PLANNING WAS COORDINATED BY PAUL DOLINSKY, CHIEF, HABS; BY BOB HARTZLER, EXHIBIT SPECIALIST, FOUN (2001); AND BY ROGER PORTILLO, MAINTENANCE SUPERVISOR, FOUN (2002). THE FIELD RECORDING WAS UNDERTAKEN AND THE MEASURED DRAWINGS WERE PRODUCED BY PROJECT SUPERVISOR MARK SCHARA, HABS ARCHITECT; BY HABS ARCHITECTS RAUL VAZQUEZ (2001) AND EDWARD L. BYRDY JR., AND BY ARCHITECTS JENNIFER L. MOST (MASSACHUSETTS INSTITUTE OF TECHNOLOGY, 2001) AND JONATHAN M. EGGERT (UNIVERSITY OF MICHIGAN, 2002).



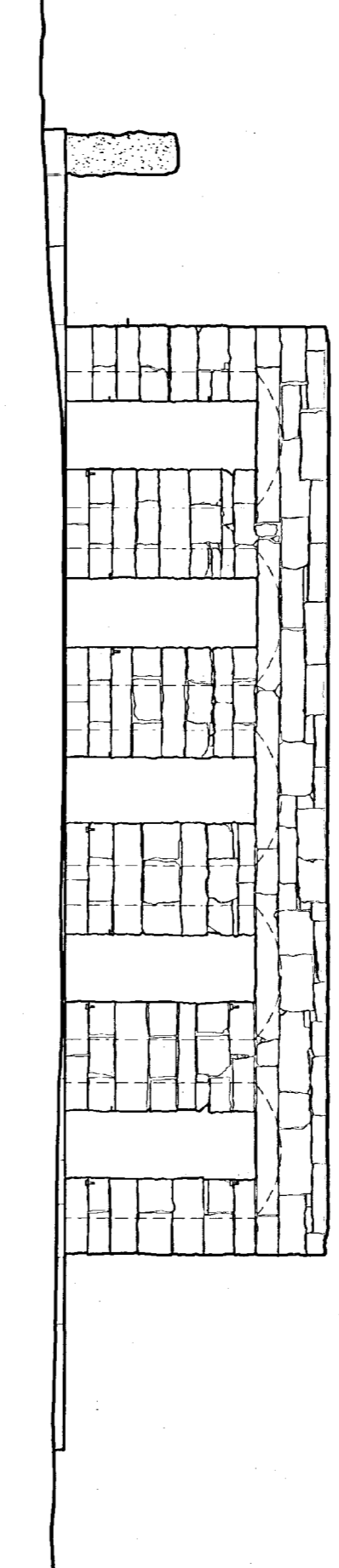
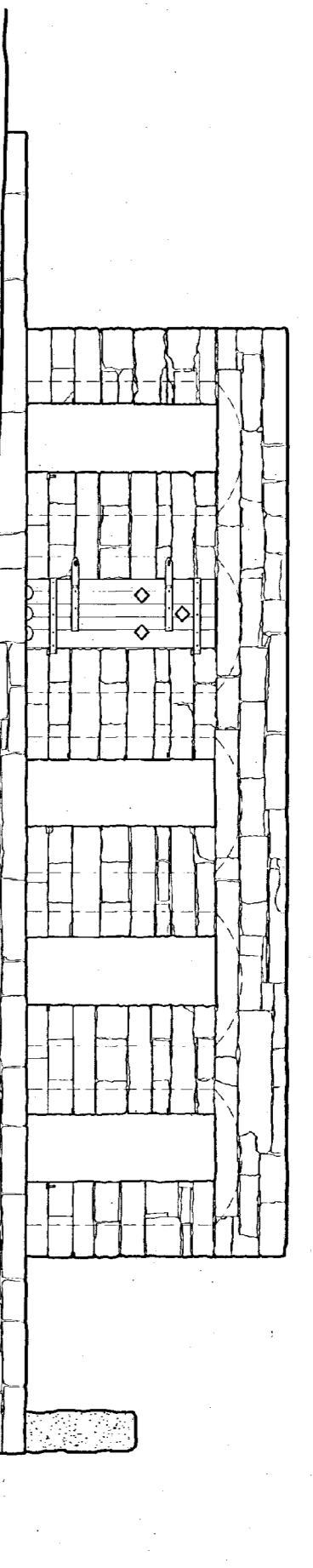
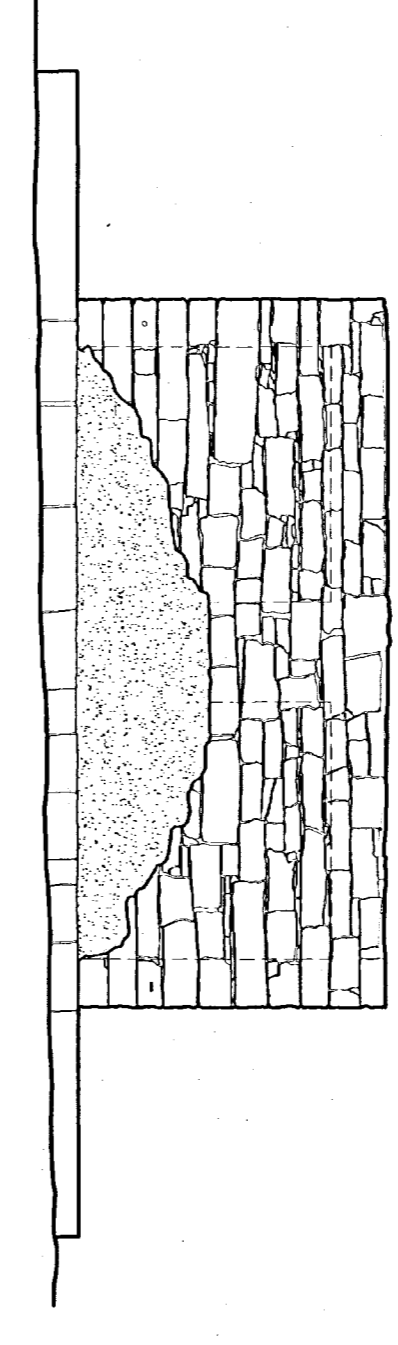
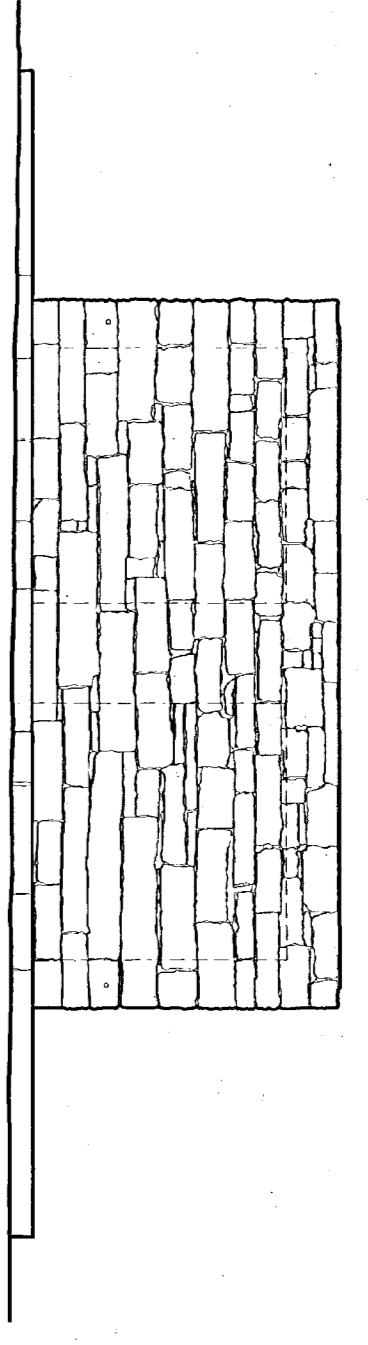


MATCH LINE N1

MATCH LINE N1



TOP OF WALL
9'-7 3/8"
PLATFORM



DRAWN BY: JONATHAN M. EGGERT \ JENNIFER L. MOST

FORT UNION PROJECT, 2001-02
NATIONAL PARK SERVICE
UNITED STATES DEPARTMENT OF THE INTERIOR

STATE HIGHWAY 161

FORT UNION · COMPANY QUARTERS, PRISON & LAUNDRESSES' QUARTERS
WATROUS VICINITY
MORA COUNTY

NEW MEXICO

SHEET 2
OF 2 SHEETS

HISTORIC AMERICAN
BUILDINGS SURVEY
NM-164-N

LIBRARY OF
CONGRESS
PHOTODUPLICATION
SERVICES

IF REPRODUCED, PLEASE CREDIT THE HISTORIC AMERICAN BUILDINGS SURVEY, NATIONAL PARK SERVICE, NAME OF FIELD OFFICE, DATE OF DRAWING





ENTHAL A 70
HARRIS



ENTHAL A 70
HARRIS