

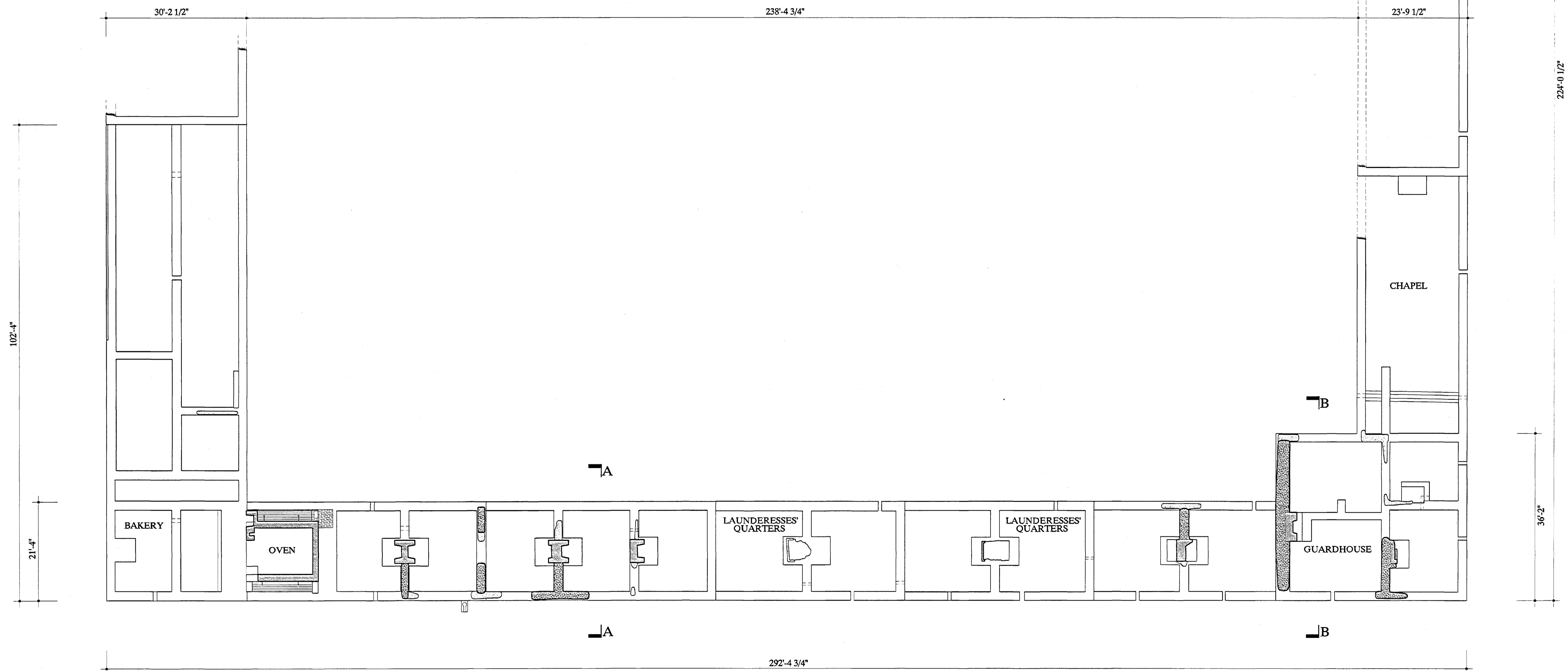
GUARDHOUSE, BAKERY & LAUNDRESSES' QUARTERS

BUILDINGS NO. 21-24

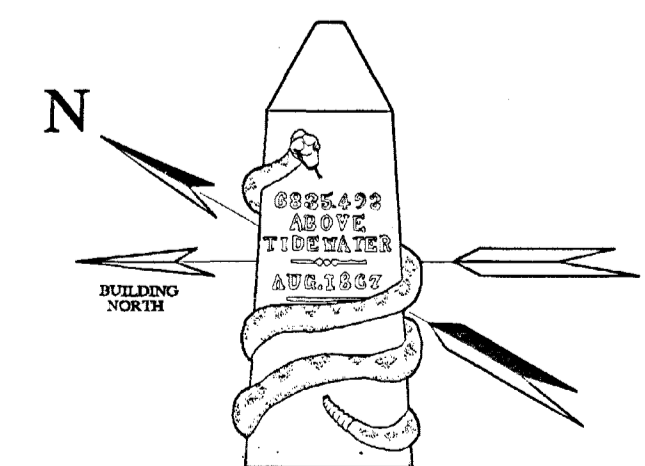
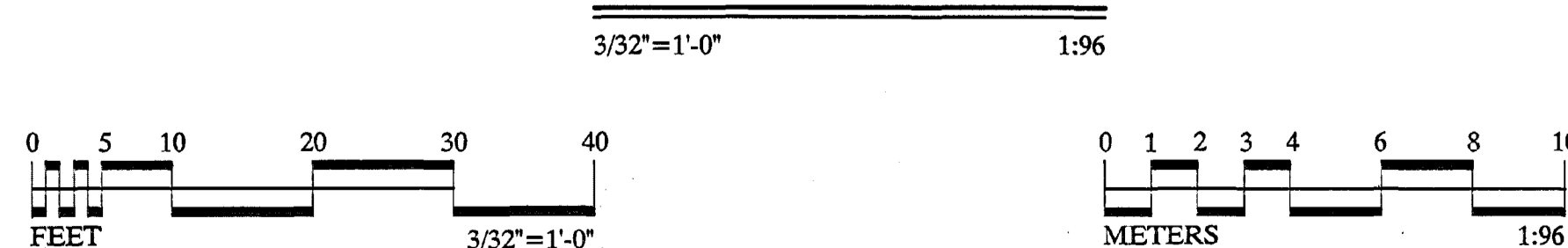
FORT UNION

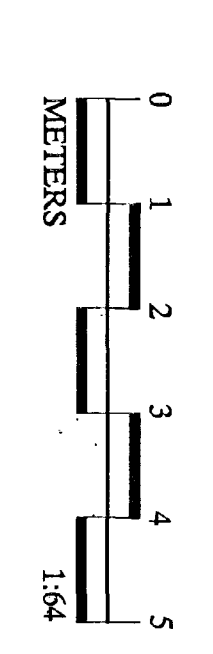
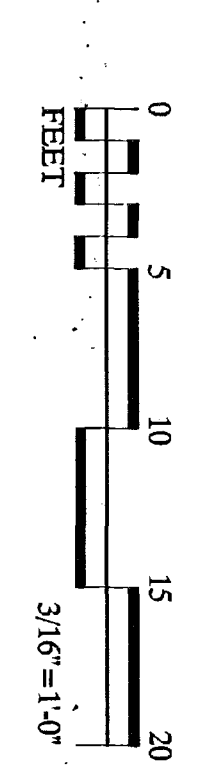
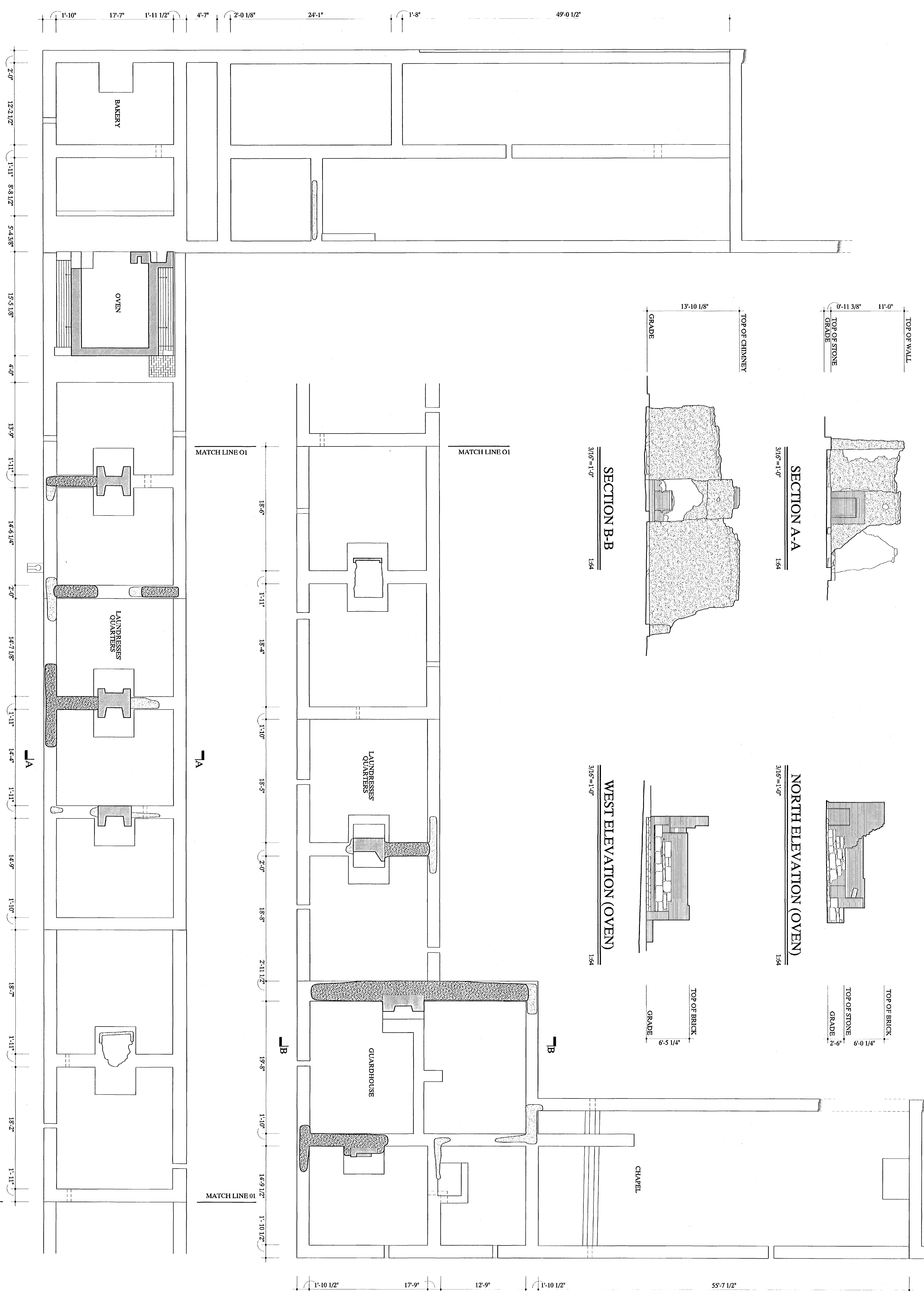
THIS STRUCTURE, WHICH DEFINED THE WEST SIDE OF THE QUARTERMASTER CORRAL, WAS BUILT 1867-68, AND HOUSED A VARIETY OF FUNCTIONS OVER THE YEARS. THE ROOMS AT THE EAST END OF THE SOUTH WING HOUSED WHEELWRIGHT, CARPENTER, AND BLACKSMITH SHOPS, AS WELL AS COAL STORAGE. ADJACENT TO THE SHOPS WAS THE POSTS CHAPEL, WHICH ALSO SERVED VARIOUSLY, AT DIFFERENT TIMES, AS THE SCHOOL AND LIBRARY. THE GUARDHOUSE, AT THE SOUTHWEST CORNER, PROVIDED A CENTRAL STATION FOR THE CORPORAL OF THE GUARD AND FOR THE DETENTION OF PRISONERS ON A OF PRISONERS ON A TEMPORARY BASIS. A SERIES OF ELEVEN ROOMS ALONG THE WEST SIDE OF THE BUILDING, EACH WITH A FIREPLACE, SERVED AS QUARTERS FOR LAUNDRESSES. THE BAKERY, WHICH ORIGINALLY OCCUPIED THE SECOND AND THIRD ROOMS FROM THE NORTHWEST CORNER, WAS RELOCATED IN 1877, WHEN THE LARGE BRICK AND STONE OVEN WAS BUILT, REORIENTED TO THE NORTH.

DOCUMENTATION OF FORT UNION WAS UNDERTAKEN BY THE HISTORIC AMERICAN BUILDINGS SURVEY / HISTORIC AMERICAN ENGINEERING RECORD (HABS/HAER) DIVISION OF THE NATIONAL PARK SERVICE (NPS), E. BLAINE CLIVER, CHIEF. THE PROJECT WAS SPONSORED BY FORT UNION NATIONAL MONUMENT (FOWN), NPS, DENNIS DITAMNSON, SUPERINTENDENT. PROJECT PLANNING WAS COORDINATED BY PAUL DOLINSKY, CHIEF, HABS; AND BY ROGER PORTILLO, MAINTENANCE SUPERVISOR, FOWN. THE FIELD WORK WAS UNDERTAKEN AND THE MEASURED DRAWINGS WERE PRODUCED BY PROJECT SUPERVISOR MARK SCHARA, HABS ARCHITECT; BY HABS ARCHITECT EDWARD L. BYRDY JR.; AND BY ARCHITECT JONATHAN M. EGGERT (UNIVERSITY OF MICHIGAN).

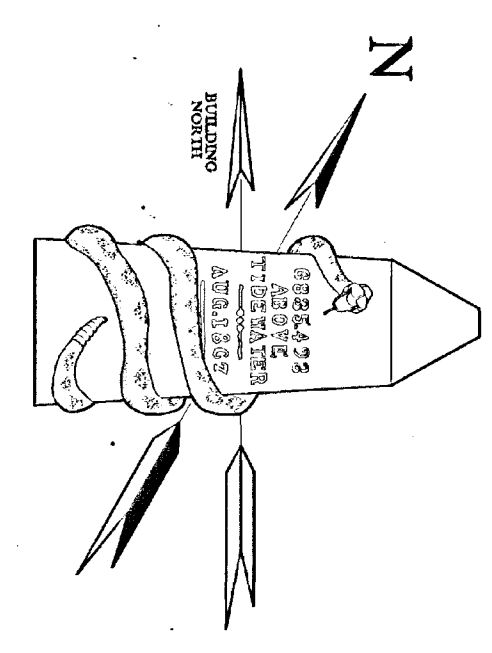


PLAN





PLAN
3/16" = 1'-0"
1/64"



DRAWN BY: JONATHAN M. EGGERT

FORT UNION PROJECT, 2002
NATIONAL PARK SERVICE
UNITED STATES DEPARTMENT OF THE INTERIOR

STATE HIGHWAY 161

FORT UNION · GUARDHOUSE, LAUNDRESSES' QUARTERS & BAKERY
WATROUS VICINITY
MORA COUNTY
NEW MEXICO

SHEET 2
OF 2 SHEETS

HISTORIC AMERICAN
BUILDINGS SURVEY
NM-164-O

LIBRARY OF
CONGRESS
PHOTODUPLICATION
SERVICES

IF REPRODUCED, PLEASE CREDIT THE HISTORIC AMERICAN BUILDINGS SURVEY, NATIONAL PARK SERVICE, NAME OF DRAWING, DATE OF DRAWING





1005A71

