

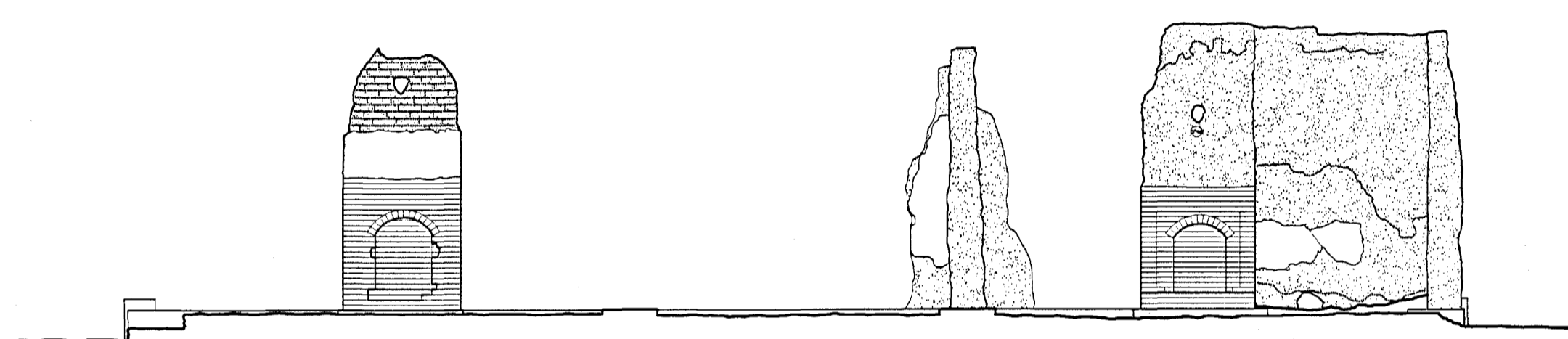
# OFFICERS' QUARTERS

## BUILDING NO. 29

## FORT UNION

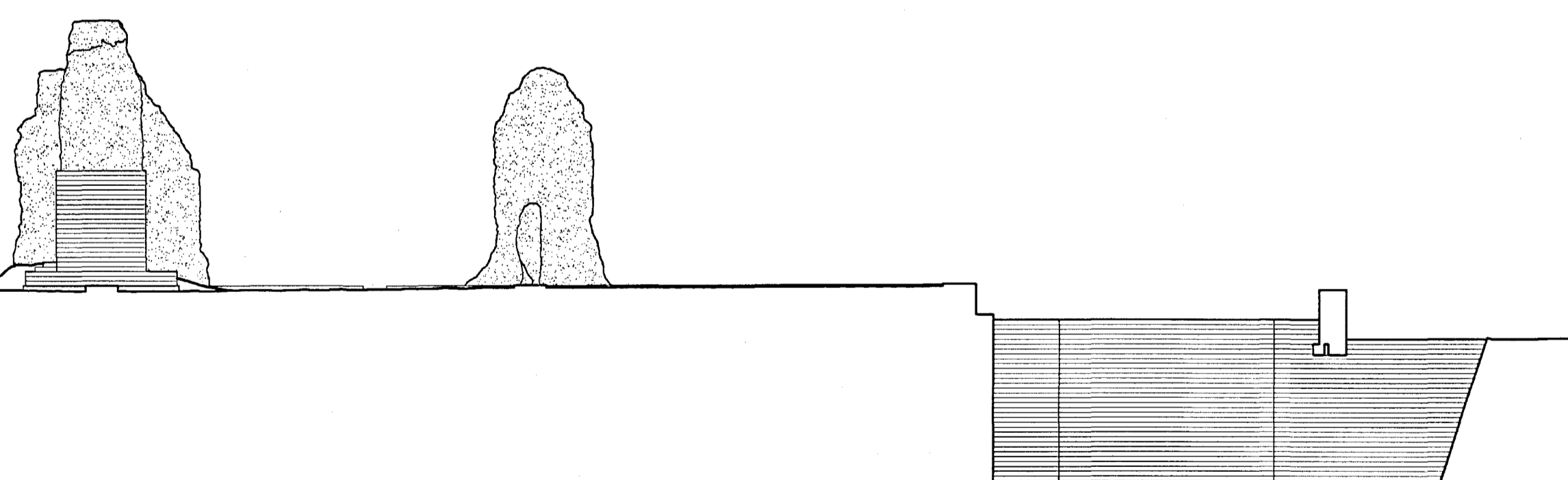
THE DEPOT QUARTERMASTER'S RESIDENCE WAS BUILT 1865-66, AS ONE OF THREE SIMILAR AND ADJACENT DEPOT OFFICERS' QUARTERS. ALL THREE WERE NEARLY IDENTICAL IN SIZE AND LAYOUT TO THE POST COMMANDER'S RESIDENCE, WITH FOUR SPACIOUS ROOMS ON EITHER SIDE OF A WIDE CENTER HALL, AND WITH A WOODEN PORCH ACROSS THE FRONT OF THE BUILDING. SIMILAR TO THE COMMANDING OFFICER'S QUARTERS, THE QUARTERMASTER'S QUARTERS HAD A BRICK-FLOORED AND -WALLED CELLAR AT THE REAR OF THE BUILDING.

DOCUMENTATION OF FORT UNION WAS UNDERTAKEN BY THE HISTORIC AMERICAN BUILDINGS SURVEY / HISTORIC AMERICAN ENGINEERING RECORD (HABS/HAER) DIVISION OF THE NATIONAL PARK SERVICE (NPS), E. BLAINE CLIVER, CHIEF. THE PROJECT WAS SPONSORED BY FORT UNION NATIONAL MONUMENT (FOWN), NPS, GEORGE HELFRICH, ACTING SUPERINTENDENT. PROJECT PLANNING WAS COORDINATED BY PAUL DOLINSKY, CHIEF, HABS; AND BY BOB HARTZLER, EXHIBIT SPECIALIST, FOWN. THE FIELD WORK WAS UNDERTAKEN AND THE MEASURED DRAWINGS WERE PRODUCED BY PROJECT SUPERVISOR MARK SCHARA, HABS ARCHITECT; BY HABS ARCHITECT RAUL VAZQUEZ; AND BY ARCHITECTS EDWARD L. BYRDY JR. (CATHOLIC UNIVERSITY OF AMERICA) AND JENNIFER L. MOST (MASSACHUSETTS INSTITUTE OF TECHNOLOGY).



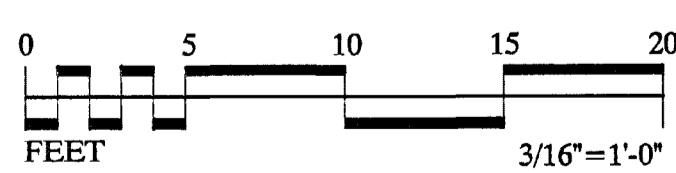
SECTION A-A

3/16" = 1'-0" 1:64

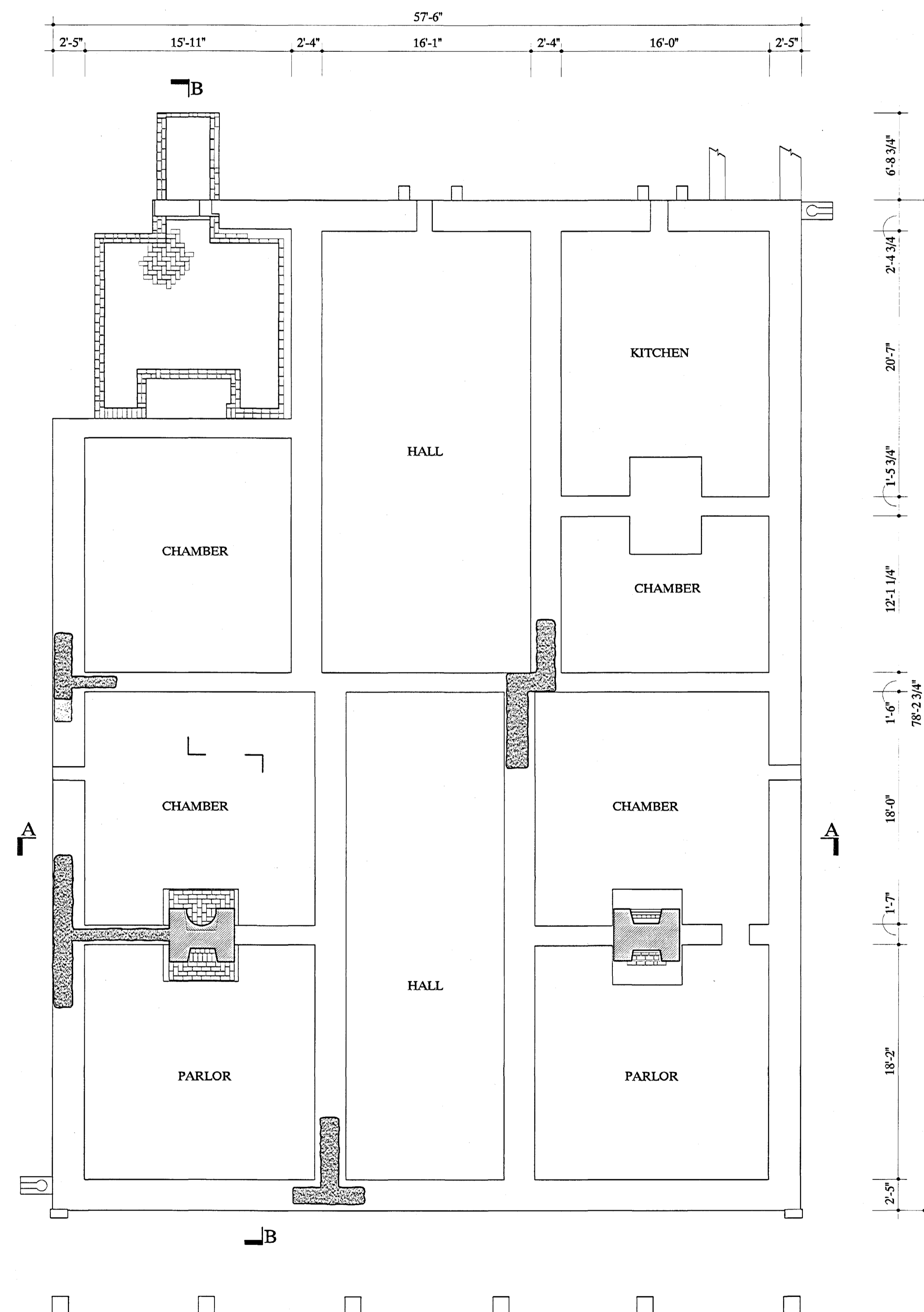


SECTION B-B

3/16" = 1'-0" 1:64

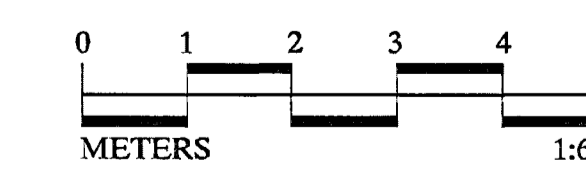


TOP OF STONE  
TOP OF BRICK  
CELLAR FLOOR

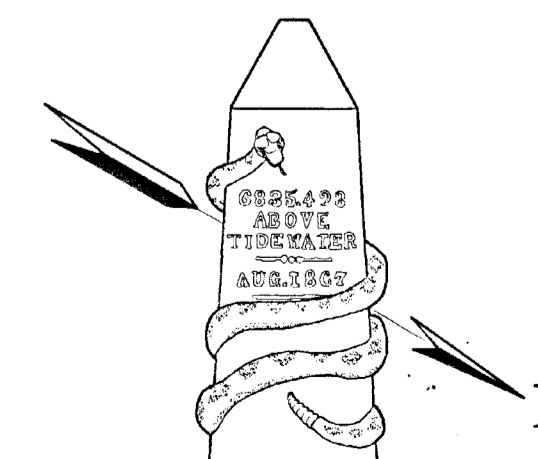


PLAN

3/16" = 1'-0" 1:64



NOTE: ROOM NAMES TAKEN FROM ORIGINAL (1866) CONSTRUCTION DRAWING





EXPOSIM 1961

