

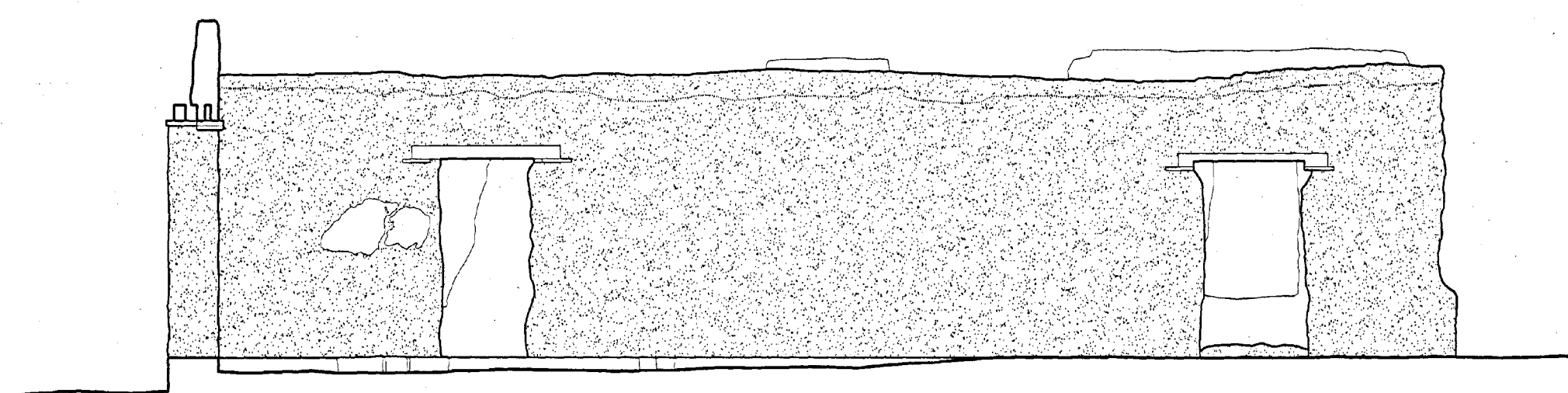
QUARTERMASTER'S OFFICE

BUILDING NO. 30

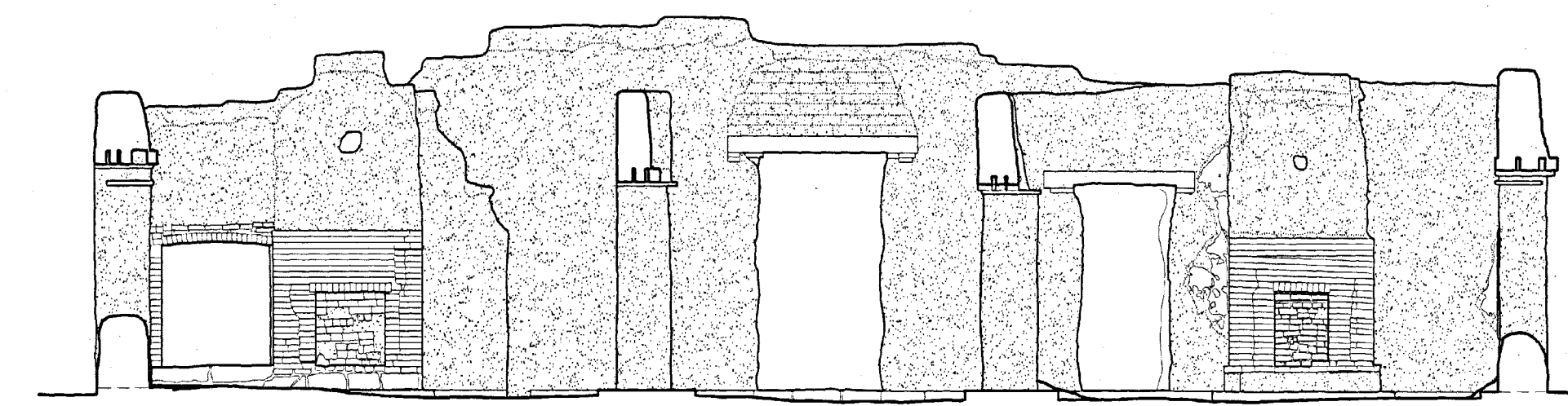
FORT UNION

THE DEPOT QUARTERMASTER'S OFFICE WAS IN USE BY EARLY 1867. IN PLAN THE BUILDING CONSISTED OF FOUR OFFICES OF APPROXIMATELY THE SAME SIZE, TWO ON EITHER SIDE OF THE CENTER HALL. THE BUILDING WAS DAMAGED BY FIRE ON 28 NOVEMBER 1877, BUT WAS REPAIRED DURING APRIL 1879. BY 1885 BOTH THE POST COMMANDER AND THE POST ADJUTANT ALSO OCCUPIED OFFICES IN THE BUILDING.

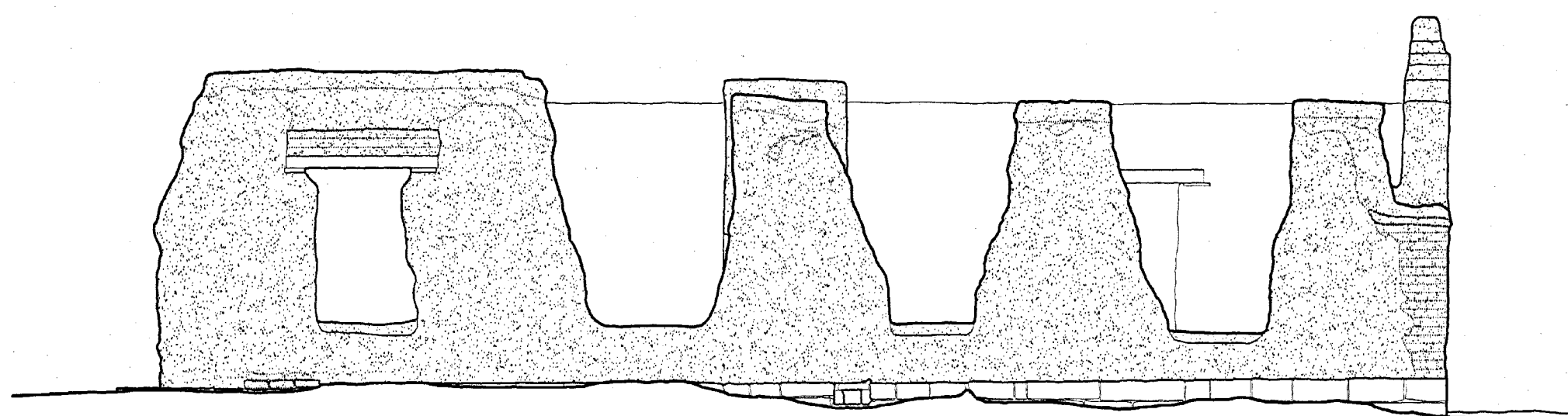
DOCUMENTATION OF FORT UNION WAS UNDERTAKEN BY THE HISTORIC AMERICAN BUILDINGS SURVEY / HISTORIC AMERICAN ENGINEERING RECORD (HABS/HAER) DIVISION OF THE NATIONAL PARK SERVICE (NPS), E. BLAINE CLIVER, CHIEF. THE PROJECT WAS SPONSORED BY FORT UNION NATIONAL MONUMENT (FON), NPS, GEORGE HELFRICH, ACTING SUPERINTENDENT. PROJECT PLANNING WAS COORDINATED BY PAUL DOLINSKY, CHIEF, HABS; AND BY BOB HARTZLER, EXHIBIT SPECIALIST, FON. THE FIELD WORK WAS UNDERTAKEN AND THE MEASURED DRAWINGS WERE PRODUCED BY PROJECT SUPERVISOR MARK SCHARA, HABS ARCHITECT; BY HABS ARCHITECT RAUL VAZQUEZ; AND BY ARCHITECTS EDWARD L. BYRDY JR. (CATHOLIC UNIVERSITY OF AMERICA) AND JENNIFER L. MOST (MASSACHUSETTS INSTITUTE OF TECHNOLOGY).



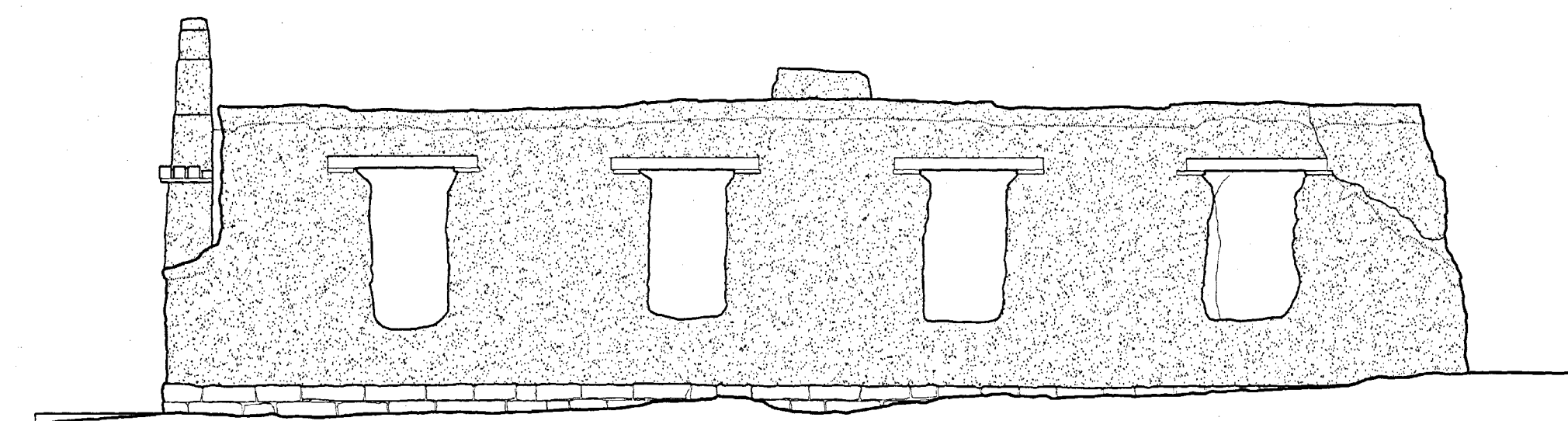
SECTION A-A
3/16"=1'-0" 1:64



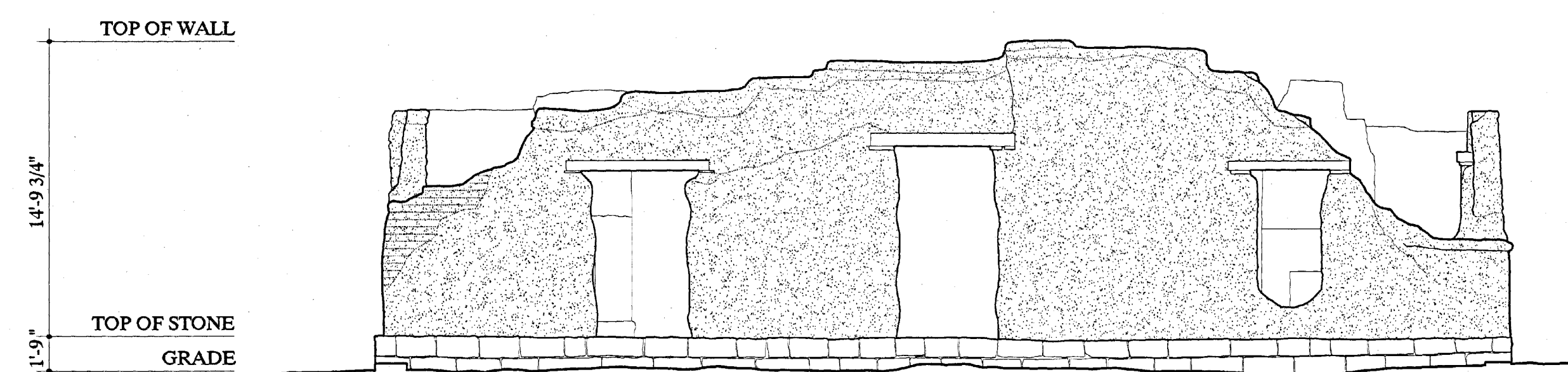
SECTION B-B
3/16"=1'-0" 1:64



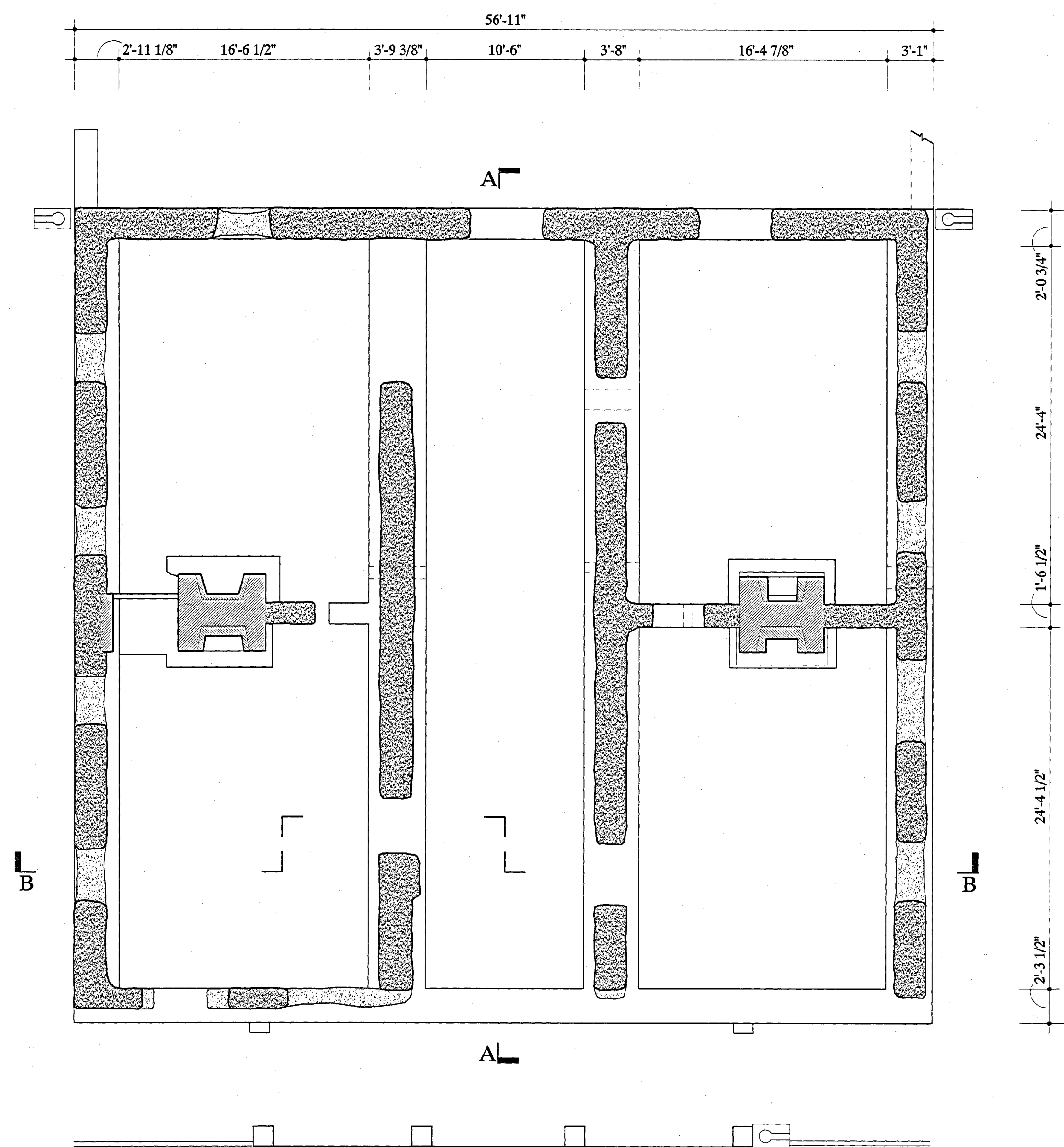
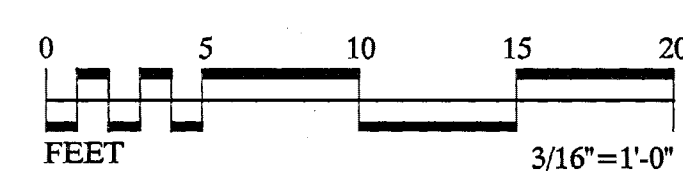
NORTH ELEVATION
3/16"=1'-0" 1:64



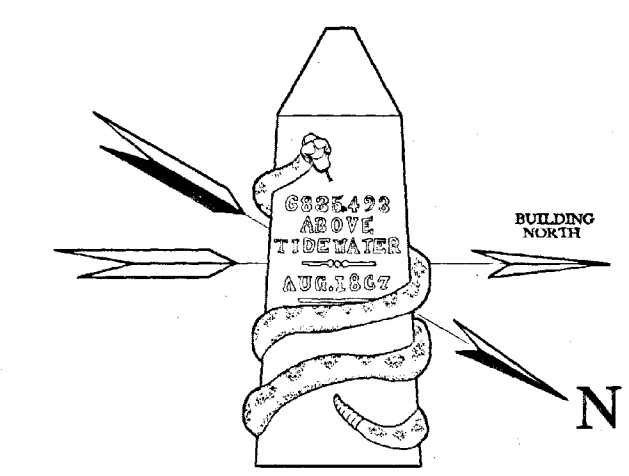
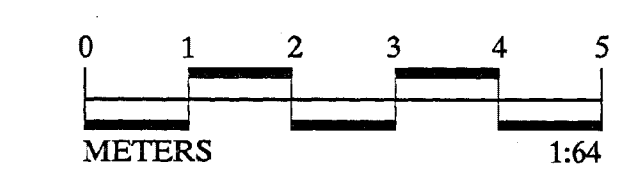
SOUTH ELEVATION
3/16"=1'-0" 1:64



WEST ELEVATION
3/16"=1'-0" 1:64



PLAN
3/16"=1'-0" 1:64





1937
1938
1939
1940
1941
1942
1943
1944
1945
1946
1947
1948
1949
1950
1951
1952
1953
1954
1955
1956
1957
1958
1959
1960
1961
1962
1963
1964
1965
1966
1967
1968
1969
1970
1971
1972
1973
1974
1975
1976
1977
1978
1979
1980
1981
1982
1983
1984
1985
1986
1987
1988
1989
1990
1991
1992
1993
1994
1995
1996
1997
1998
1999
2000
2001
2002
2003
2004
2005
2006
2007
2008
2009
2010
2011
2012
2013
2014
2015
2016
2017
2018
2019
2020
2021
2022
2023
2024
2025

NTHAL A.48



1937
A.48

ROSENTHAL A56
HAB



HABSTH. 1515.4



GENERAL A 39



H. 1008. N. M. 1041. S. C.