

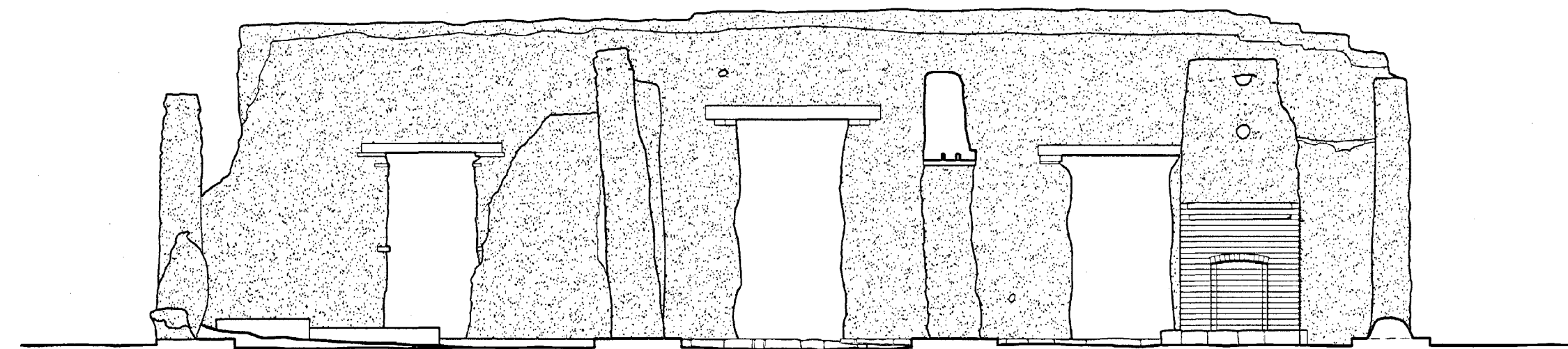
CLERK'S QUARTERS

BUILDING NO. 32

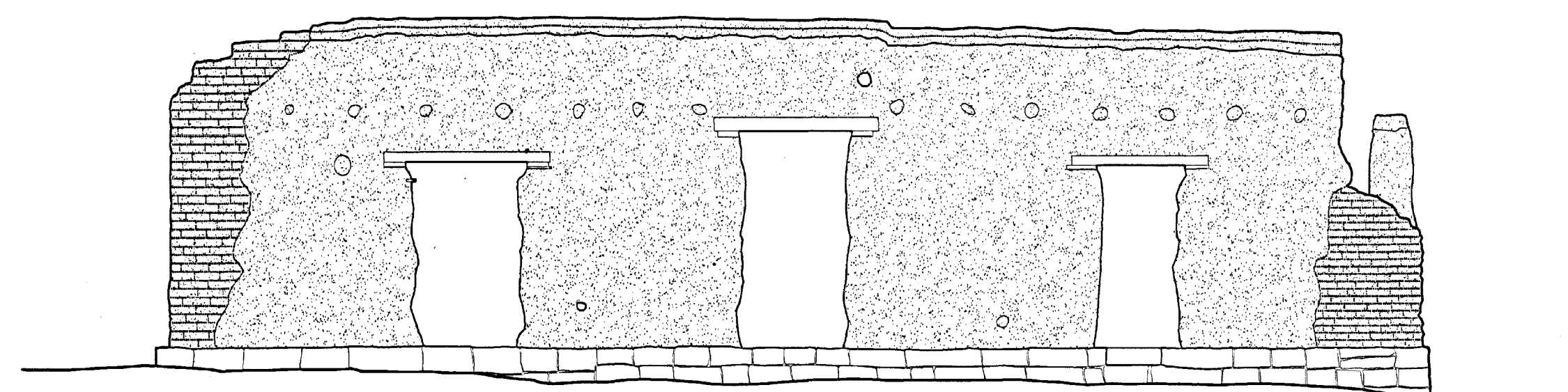
FORT UNION

THE DEPOT CLERK'S QUARTERS WAS COMPLETED IN JUNE 1867. SIMILAR IN SIZE AND LAYOUT TO THE TWO ADJACENT OFFICE BUILDINGS, THE PLAN OF THE CLERK'S QUARTERS ORIGINALLY CONSISTED OF TWO ROOMS ON EITHER SIDE OF A CENTER HALL. DURING 1876-77 THE WALL BETWEEN THE TWO NORTHERN ROOMS WAS REMOVED, AND THE RESULTING SPACE CONVERTED FOR USE AS THE FORT'S POST OFFICE, WHICH OPERATED OUT OF THE BUILDING UNTIL 1885. THE CHIMNEY AT THE REAR OF THE ROOM WAS PROBABLY ERECTED AT THE TIME OF THE ALTERATION. FROM 1886-89 THE BUILDING REVERTED ONCE AGAIN TO QUARTERS FOR THE DEPOT CLERKS.

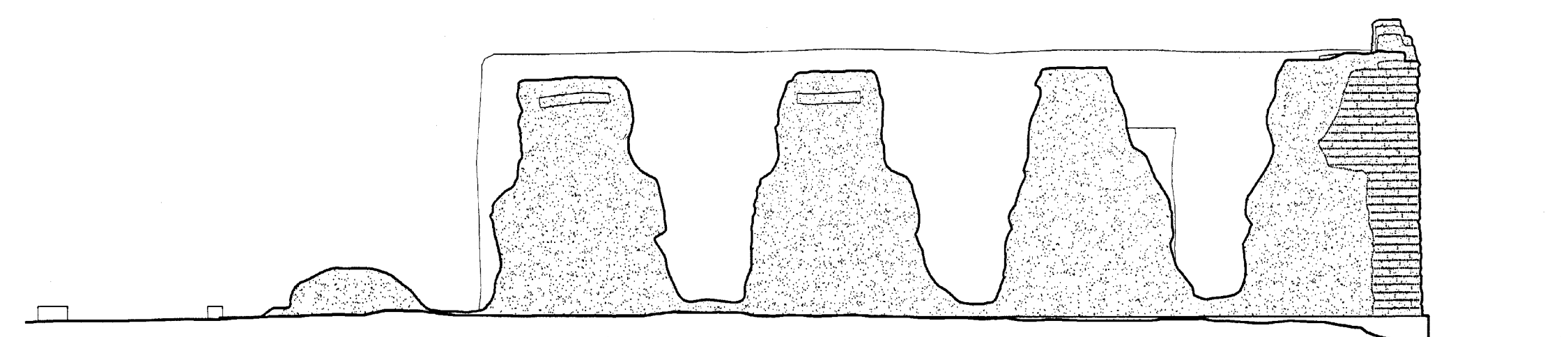
DOCUMENTATION OF FORT UNION WAS UNDERTAKEN BY THE HISTORIC AMERICAN BUILDINGS SURVEY / HISTORIC AMERICAN ENGINEERING RECORD (HABS/HAER) DIVISION OF THE NATIONAL PARK SERVICE (NPS), E. BLAINE CLIVER, CHIEF. THE PROJECT WAS SPONSORED BY FORT UNION NATIONAL MONUMENT (FOWN), NPS, GEORGE HELFRICH, ACTING SUPERINTENDENT. PROJECT PLANNING WAS COORDINATED BY PAUL DOLINSKY, CHIEF, HABS; AND BY BOB HARTZLER, EXHIBIT SPECIALIST, FOWN. THE FIELD WORK WAS UNDERTAKEN AND THE MEASURED DRAWINGS WERE PRODUCED BY PROJECT SUPERVISOR MARK SCHARA, HABS ARCHITECT; BY HABS ARCHITECT RAUL VAZQUEZ; AND BY ARCHITECTS EDWARD L. BYRDY JR. (CATHOLIC UNIVERSITY OF AMERICA) AND JENNIFER L. MOST (MASSACHUSETTS INSTITUTE OF TECHNOLOGY).



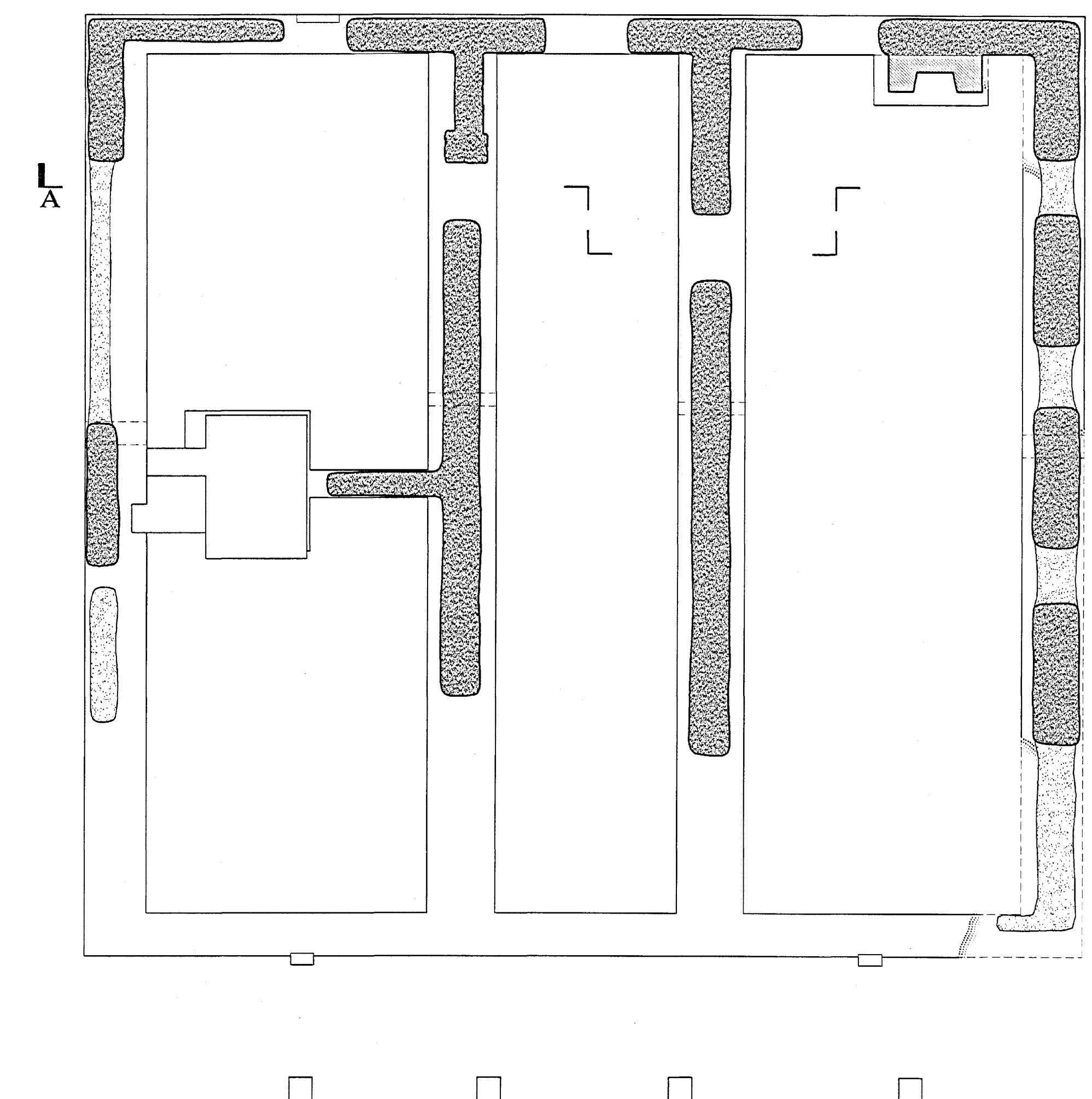
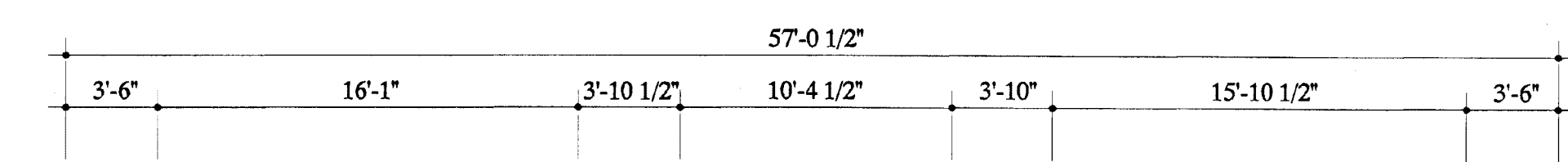
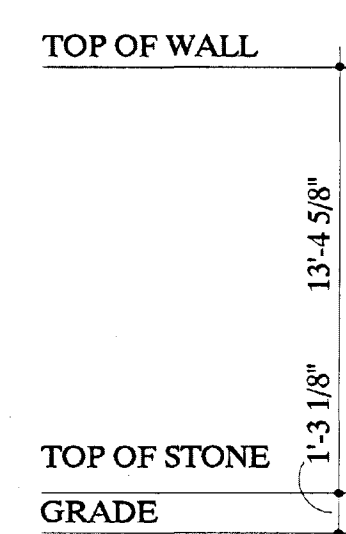
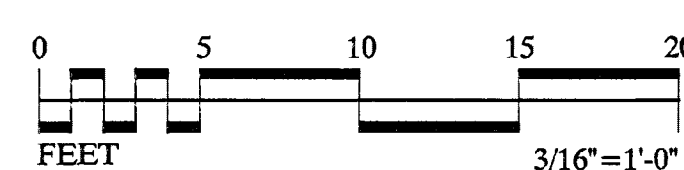
SECTION A-A
3/16" = 1'-0" 1:64



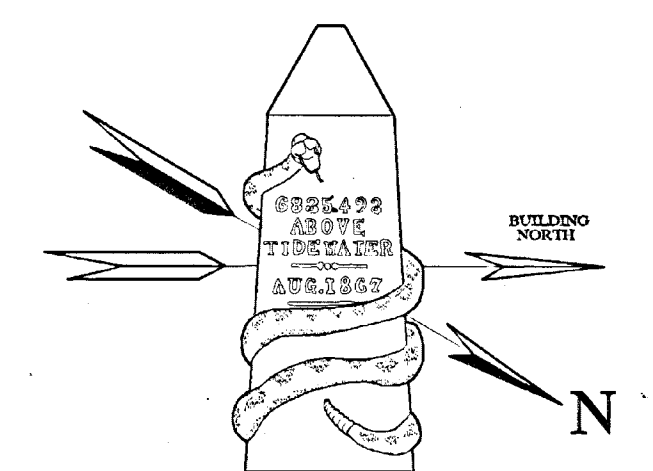
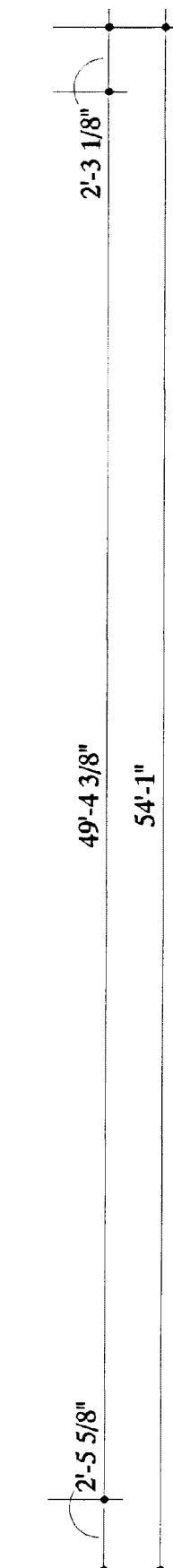
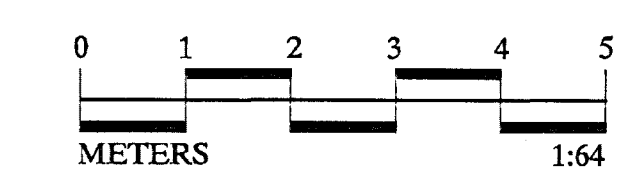
EAST ELEVATION
3/16" = 1'-0" 1:64



NORTH ELEVATION
3/16" = 1'-0" 1:64



PLAN
3/16" = 1'-0" 1:64











HERBERT HARRIS