

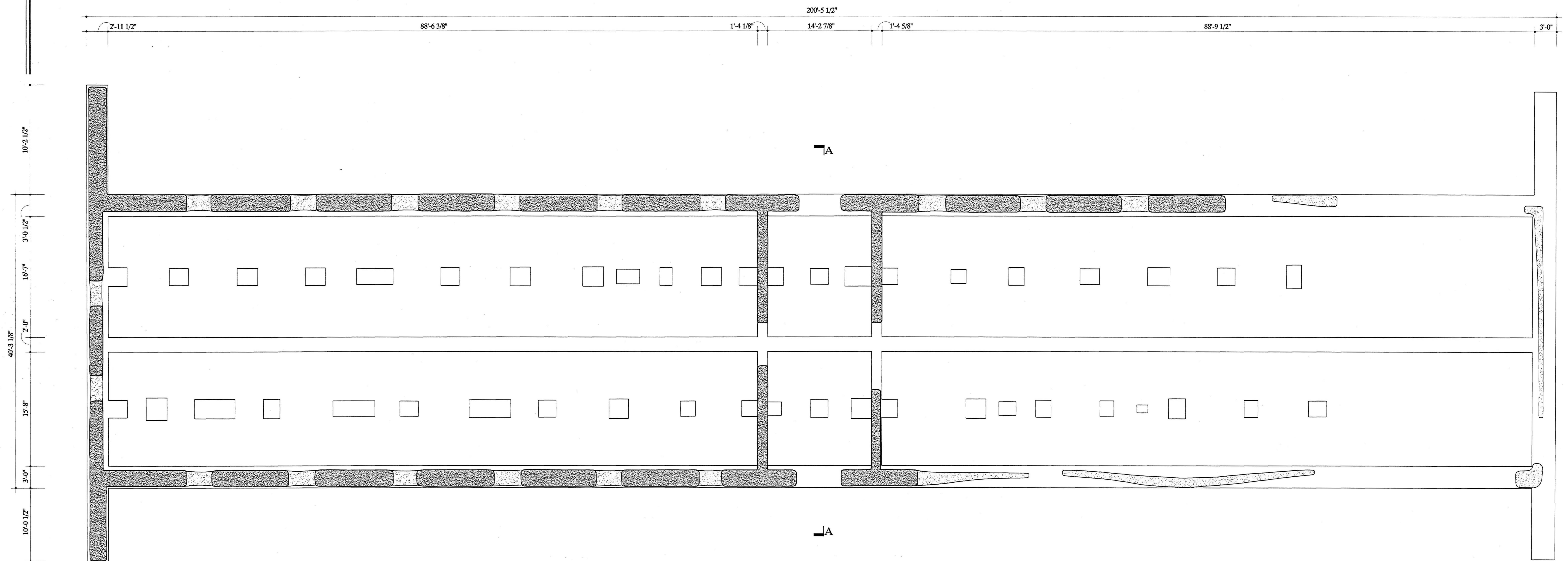
QUARTERMASTER STOREHOUSE

BUILDING NO. 42

FORT UNION

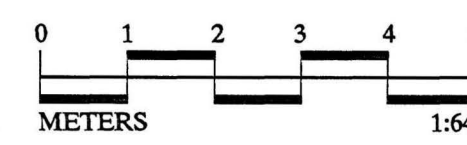
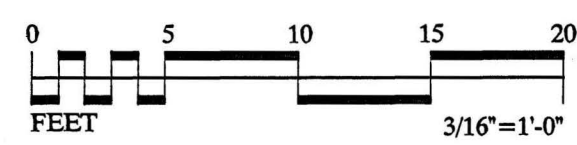
THE QUARTERMASTER STOREHOUSE WAS ONE OF THREE STOREHOUSES OF IDENTICAL SIZE AND LAYOUT, BUILT AT FORT UNION 1866-67. IN PLAN, THE STOREHOUSE CONSISTED OF TWO LONG STORAGE ROOMS SEPARATED BY A CENTER PASSAGE. EXTERIOR LOADING DOCKS ORIGINALLY RAN THE LENGTH OF THE BUILDING ON BOTH SIDES. THE YARDS BETWEEN THE ADJACENT STOREHOUSES WERE ENCLOSED WITH TALL ADOBE WALLS AND WOOD GATES.

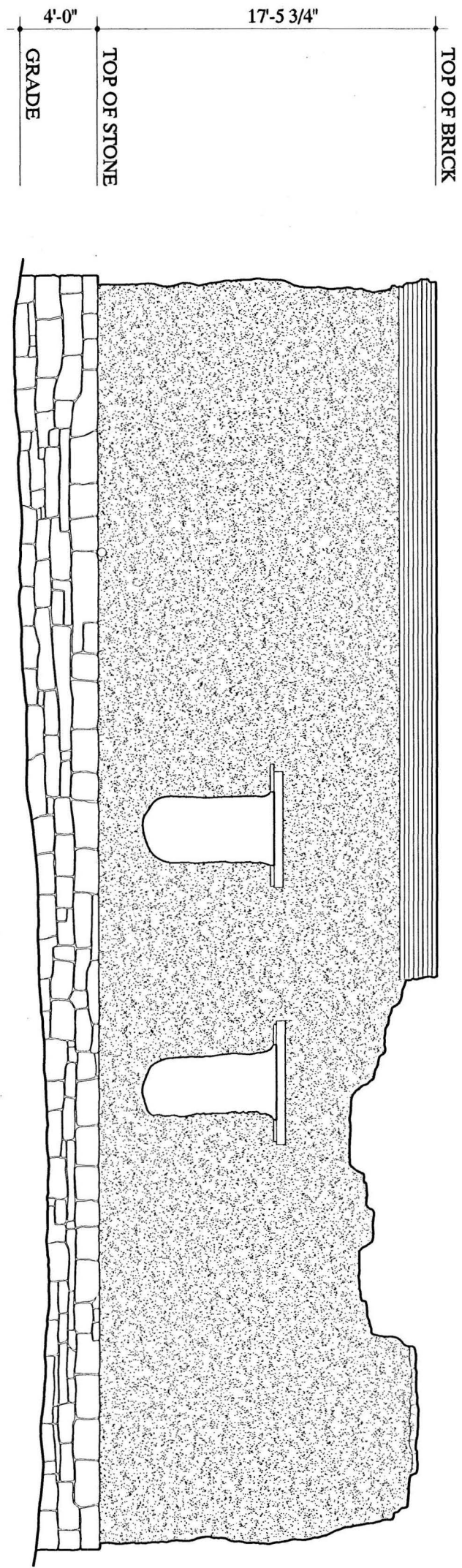
DOCUMENTATION OF FORT UNION WAS UNDERTAKEN BY THE HISTORIC AMERICAN BUILDINGS SURVEY / HISTORIC AMERICAN ENGINEERING RECORD (HABS/HAER) DIVISION OF THE NATIONAL PARK SERVICE (NPS), E. BLAINE CLIVER, CHIEF. THE PROJECT WAS SPONSORED BY FORT UNION NATIONAL MONUMENT (FONM), NPS, DENNIS DITAMNISON, SUPERINTENDENT. PROJECT PLANNING WAS COORDINATED BY PAUL DOLINSKY, CHIEF, HABS; AND BY ROGER PORTILLO, MAINTENANCE SUPERVISOR, FONM. THE FIELD WORK WAS UNDERTAKEN AND THE MEASURED DRAWINGS WERE PRODUCED BY PROJECT SUPERVISOR MARK SCHARA, HABS ARCHITECT; BY HABS ARCHITECT EDWARD L. BYRDY JR.; AND BY ARCHITECT JONATHAN M. EGGERT (UNIVERSITY OF MICHIGAN).



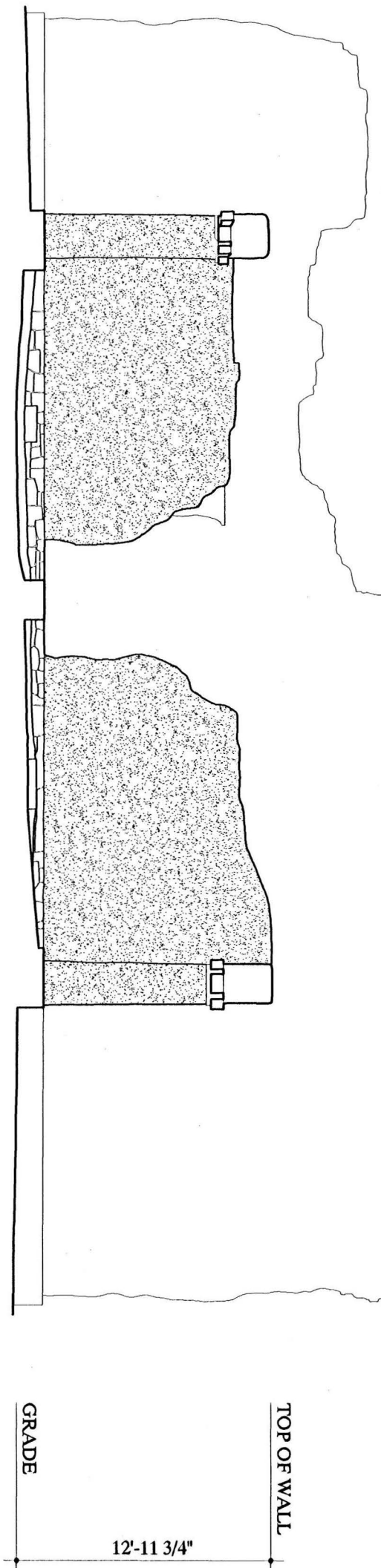
PLAN

3/16"=1'-0" 1:64

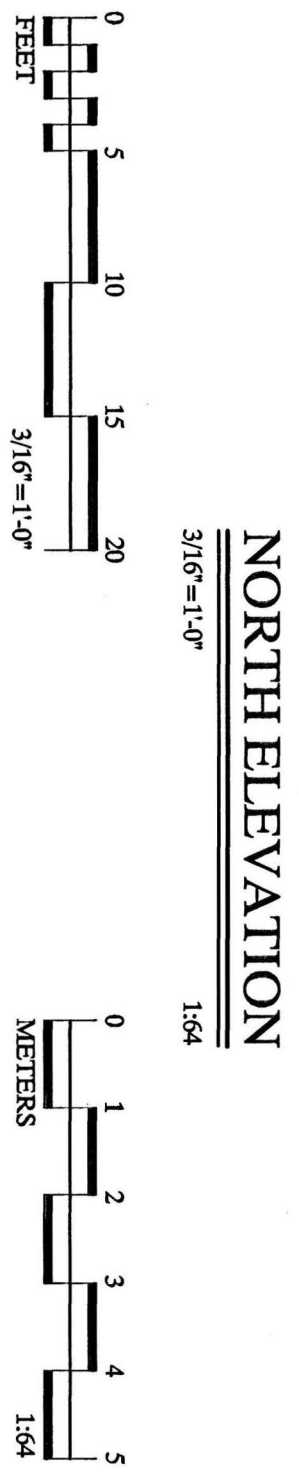
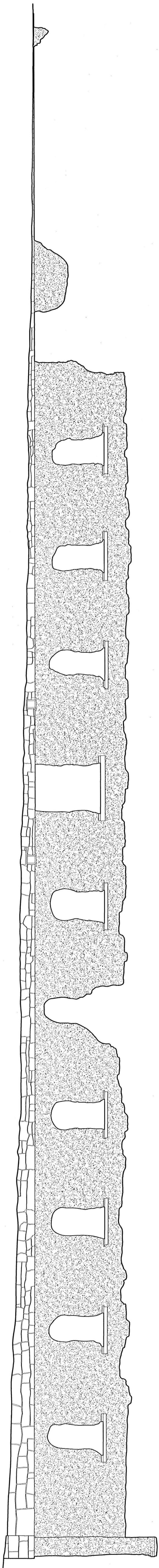




WEST ELEVATION
3/16"=1'-0"
1:64



SECTION A-A
3/16"=1'-0"
1:64



NORTH ELEVATION
3/16"=1'-0"
1:64

DRAWN BY: JONATHAN M. EGGERT

FORT UNION PROJECT, 2002
NATIONAL PARK SERVICE
UNITED STATES DEPARTMENT OF THE INTERIOR

STATE HIGHWAY 161

FORT UNION · COMMISSARY STOREHOUSE
WATROUS VICINITY
MORA COUNTY

NEW MEXICO

SHEET 2
OF 2 SHEETS

HISTORIC AMERICAN
BUILDINGS SURVEY
NM-164-Z

LIBRARY OF
CONGRESS
DIGITAL

UNIVERSITY OF
MICHIGAN 72



HS-05 N.M. 164.2.1