



The President of the United States, in compliance  
with a resolution of the Senate, the following is a list of  
lands in the State of California:

In the Bay of San Francisco, California  
From a point one mile north of Point San  
of the Straits along the northern boundary to the western base

the southern boundary of a tract that has its western base  
formed between Point San and Point Lobos.  
From the southern boundary of San Pedro Bay, a line  
to the channels of the bay, to the Pacific  
Island (San Pedro Island)  
Alcatraz Island  
Angel Island

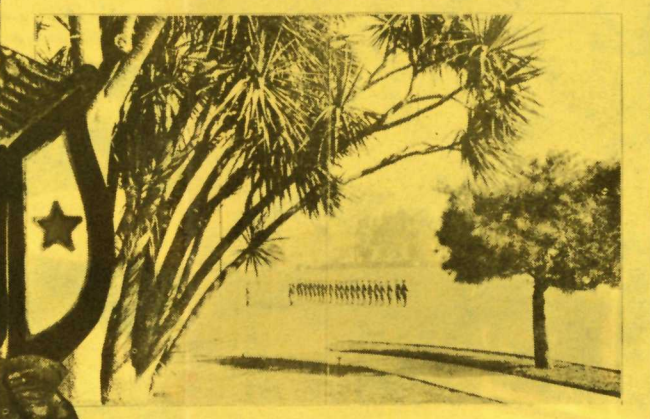
The lands on the eastern side of Marshall Island, to  
the high hills between these streets and the City of  
a tract of 2000 acres from the former angle of the city  
nearly parallel to it, to a point opposite the northern  
of these islands, on the line of the Straits as to the point  
at a point about one mile north of the settlement  
of the eastern side of the Straits.



PRESIDIO  
ARMY MUSEUM



UNDER CALIFORNIA SKIES



Uncle Sam's Soldiers Tread Historic Ground in San Francisco's Presidio, So Intimately Connected with the Fortunes of the Golden State

THE U. S. ARMY BUILDS MEN

PRESIDIO ARMY MUSEUM



Presidio of San Francisco,

California 94129

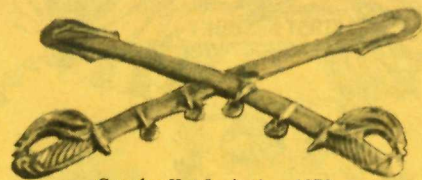


Open Tuesday-Sunday 10:00-4:00



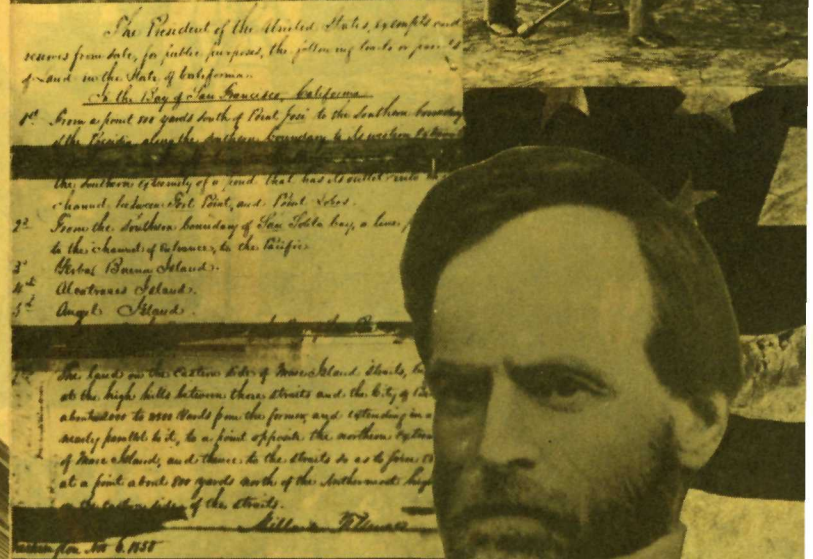
Admission Free

This photomontage of artifacts and memorabilia from the Presidio's past dates from the Spanish Colonial Empire of 1776 through its 19th century Mexican heritage, and later American occupation beginning in 1847 to the present. These are part of the Presidio Army Museum's permanent collection. The Museum is intended to be a center for historical research, with the Museum Library being available to scholars upon application.



Cavalry Hat Insignia 1872

Preservation of the Presidio of San Francisco as a National Landmark is the theme of the United States Army's Bicentennial Project in the West. Old Station Hospital, built in 1857, was chosen to house a military history museum that would tell the story of the Presidio's past. By giving Old Station Hospital a useful function, the stately pre-Civil War structure is being preserved in its own terms as an outstanding piece of period architecture in San Francisco. Through preservation of the building as a museum, the United States Army seeks to maintain an historic perspective and to promote for many people a sense of identity with the Presidio of a century ago.



THE PRESIDIO  
ARMY MUSEUM



Breast Plate Eagle 1855

**COVER**

- Museum Building c. 1867
- Black Artillery c. 1864
- Fillmore Document 1850
- William Tecumseh Sherman c. 1863
- United States Flag c. 1862

**INSIDE**

- Spanish Map 1779
- Symbol from Mexican Empire Flag c. 1830
- Illustration from Poinsett's Manual 1841
- United States Artillery Sword 1833
- Book Jacket 1898
- Alice Townsend, Actress and Red Cross Volunteer 1898
- Officer's Collar Insignia 1898
- President McKinley and General Shafter in Golden Gate Park 1901
- General and Mrs. Stilwell's Wedding Picture 1910
- Army Nurse c. 1918
- Sweetheart Pin c. 1917
- General John J. Pershing c. 1917
- San Francisco Commemorative Award 1919
- Recruitment Poster 1930
- Golden Gate Bridge Construction c. 1936
- General Douglas MacArthur 1951
- Sentry Duty, Oahu Beach, Territory of Hawaii 1945

