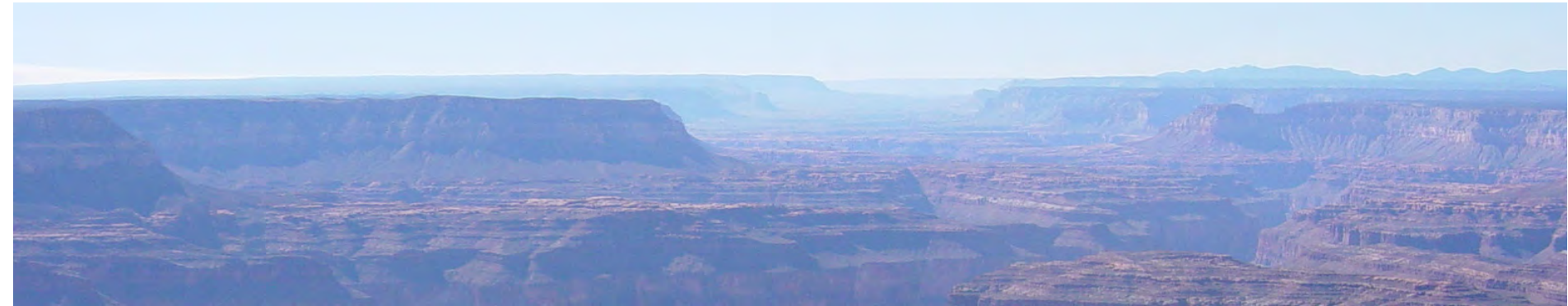


# Grand Canyon Backcountry Information Center



## **2015 Statistics and 2000-2015 Summary**

**-by Steve Sullivan**

# Calendar Years 2000 to 2015 Backcountry Use Statistics

|                         | 2000  | 2001  | 2002  | 2003  | 2004  | 2005  | 2006  | 2007  | 2008  | 2009  | 2010  | 2011  | 2012  | 2013  | 2014  | 2015  |
|-------------------------|-------|-------|-------|-------|-------|-------|-------|-------|-------|-------|-------|-------|-------|-------|-------|-------|
| <b>User-Nights</b>      | 88499 | 91375 | 91657 | 91477 | 89880 | 89049 | 84272 | 86369 | 87551 | 91739 | 90058 | 92033 | 94278 | 88029 | 94057 | 98007 |
| <b>Permits</b>          | 11646 | 11837 | 12015 | 11943 | 11370 | 11067 | 11085 | 11011 | 11480 | 12087 | 11657 | 11775 | 12233 | 11269 | 12469 | 13288 |
| <b>People</b>           | 36675 | 37465 | 37575 | 37537 | 36513 | 35871 | 34817 | 35219 | 36539 | 38301 | 37425 | 37994 | 39075 | 36366 | 39267 | 41268 |
| <b>Group-Nights</b>     | 26544 | 27485 | 27595 | 27771 | 26583 | 26012 | 25613 | 25735 | 26162 | 27773 | 27034 | 27522 | 28138 | 26149 | 28359 | 30053 |
| <b>Stock</b>            | 54    | 52    | 42    | 93    | 63    | 46    | 35    | 7     | 32    | 42    | 65    | 54    | 29    | 25    | 32    | 75    |
| <b>CUA User-Nights</b>  | 2356  | 2275  | 2655  | 2240  | 2478  | 2916  | 3120  | 3850  | 5722  | 6434  | 6658  | 7922  | 8545  | 8640  | 9467  | 9992  |
| <b>CUA Permits</b>      | 162   | 192   | 189   | 185   | 224   | 257   | 249   | 298   | 454   | 480   | 482   | 581   | 614   | 593   | 632   | 650   |
| <b>CUA People</b>       | 874   | 919   | 912   | 845   | 1033  | 1174  | 1233  | 1500  | 2251  | 2376  | 2450  | 2940  | 3104  | 3144  | 3413  | 3533  |
| <b>CUA Group_Nights</b> | 413   | 467   | 520   | 470   | 538   | 622   | 612   | 766   | 1151  | 1256  | 1240  | 1522  | 1632  | 1576  | 1705  | 1824  |

# Backcountry Permittees in 2015

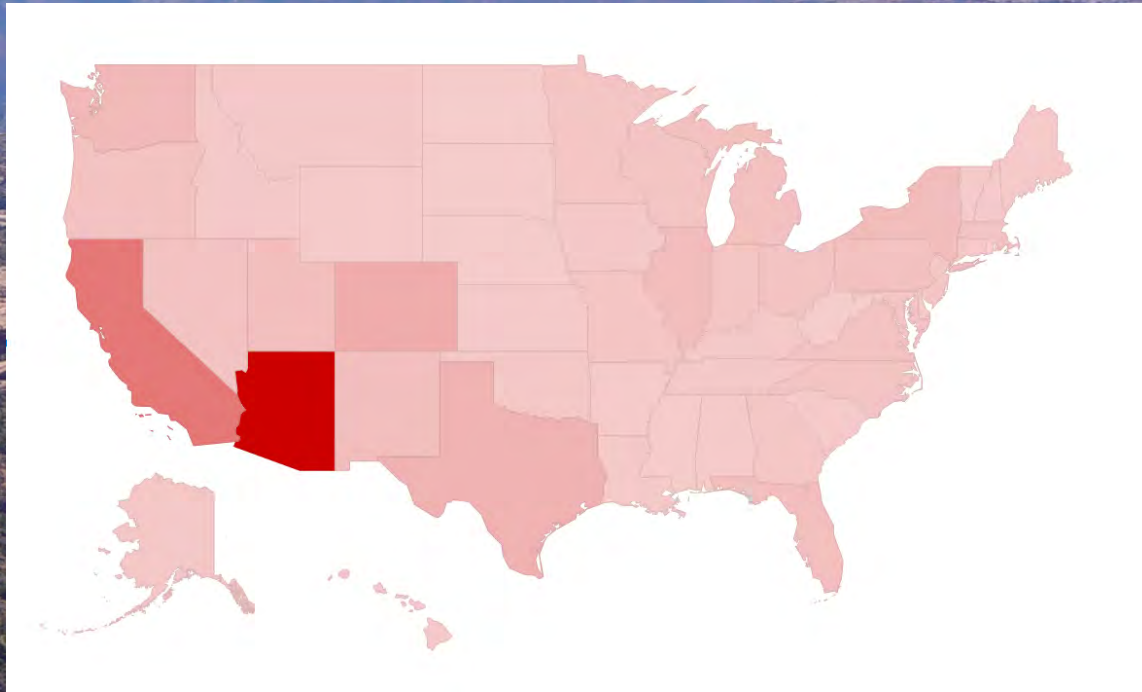
| Country        | Permits | People |
|----------------|---------|--------|
| USA            | 11830   | 37698  |
| CANADA         | 440     | 1107   |
| GERMANY        | 319     | 771    |
| FRANCE         | 161     | 378    |
| UNITED KINGDOM | 117     | 358    |
| AUSTRALIA      | 71      | 152    |
| SWITZERLAND    | 54      | 109    |
| BELGIUM        | 53      | 125    |
| NETHERLANDS    | 46      | 104    |
| SPAIN          | 33      | 77     |
| DENMARK        | 32      | 78     |
| AUSTRIA        | 27      | 62     |
| CZECH REPUBLIC | 24      | 71     |
| ISRAEL         | 21      | 48     |
| BRAZIL         | 20      | 40     |
| POLAND         | 18      | 42     |
| ITALY          | 16      | 39     |
| MEXICO         | 11      | 56     |
| JAPAN          | 9       | 17     |
| NORWAY         | 8       | 15     |
| NEW ZEALAND    | 8       | 13     |
| SWEDEN         | 7       | 14     |
| CHINA          | 6       | 16     |
| SINGAPORE      | 5       | 17     |
| FINLAND        | 4       | 9      |
| RUSSIA         | 4       | 7      |
| ARGENTINA      | 4       | 9      |



| Country          | Permits | People |
|------------------|---------|--------|
| PORTUGAL         | 3       | 6      |
| SOUTH AFRICA     | 3       | 6      |
| KOREA            | 3       | 5      |
| HUNGARY          | 2       | 10     |
| UKRAINE          | 2       | 4      |
| HONG KONG        | 2       | 5      |
| SLOVAKIA         | 2       | 5      |
| MALAYSIA         | 2       | 3      |
| SOUTH KOREA      | 2       | 4      |
| SCOTLAND, UK     | 2       | 4      |
| LATVIA           | 1       | 2      |
| SLOVENIA         | 1       | 2      |
| TURKEY           | 1       | 2      |
| FRENCH POLYNESI  | 1       | 2      |
| ISLE OF MAN      | 1       | 2      |
| REPUBLIC OF MOL  | 1       | 1      |
| HAITI            | 1       | 2      |
| TAIWAN           | 1       | 2      |
| ILALY            | 1       | 3      |
| LUXEMBOURG       | 1       | 9      |
| WEST INDIES      | 1       | 5      |
| PERU             | 1       | 1      |
| TASMANIA         | 1       | 2      |
| BELARUS          | 1       | 1      |
| IRELAND          | 1       | 4      |
| REP OF KOREA     | 1       | 3      |
| UNITED ARAB EMER | 1       | 2      |
| GUATAMALA        | 1       | 1      |

# USA Backcountry Permittees in 2015

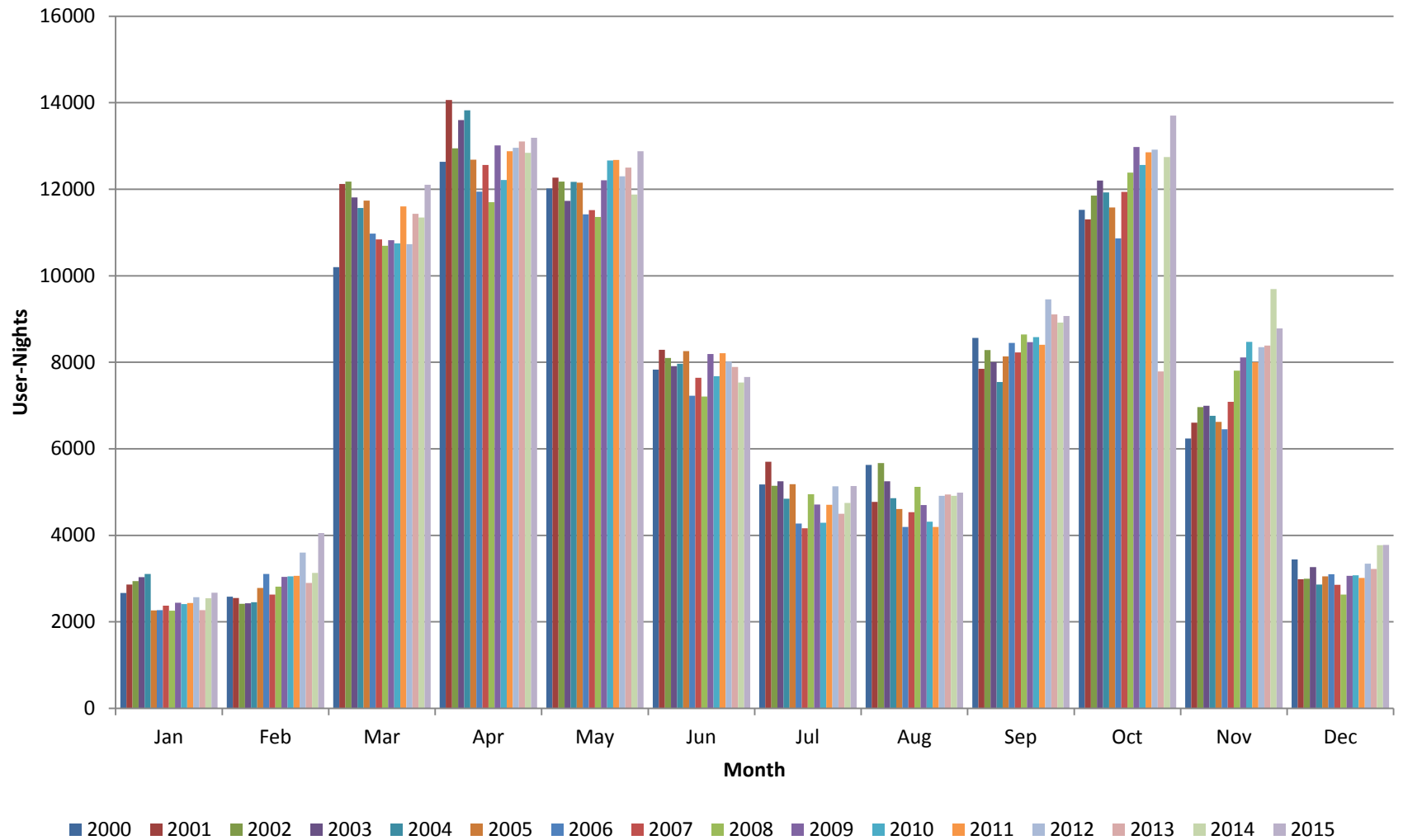
| State | permits | people |
|-------|---------|--------|
| AZ    | 3740    | 13271  |
| CA    | 1662    | 5380   |
| CO    | 600     | 1783   |
| TX    | 512     | 1544   |
| UT    | 330     | 1211   |
| WA    | 322     | 936    |
| NY    | 306     | 790    |
| IL    | 268     | 811    |
| NM    | 252     | 847    |
| OH    | 225     | 683    |
| NV    | 201     | 618    |
| FL    | 199     | 531    |
| PA    | 191     | 545    |
| OR    | 182     | 449    |
| MA    | 170     | 455    |
| MI    | 169     | 482    |
| VA    | 168     | 473    |
| WI    | 165     | 500    |
| NC    | 164     | 455    |
| MN    | 161     | 434    |
| MO    | 153     | 493    |
| GA    | 138     | 395    |
| IN    | 135     | 467    |
| MD    | 132     | 383    |
| NJ    | 117     | 339    |
| TN    | 103     | 304    |



| state | permits | people |
|-------|---------|--------|
| MT    | 87      | 234    |
| ID    | 78      | 249    |
| KS    | 70      | 231    |
| LA    | 70      | 187    |
| AK    | 67      | 168    |
| OK    | 67      | 204    |
| IA    | 60      | 215    |
| CT    | 59      | 185    |
| WY    | 53      | 151    |
| KY    | 47      | 136    |
| SC    | 41      | 125    |
| DC    | 40      | 92     |
| AL    | 40      | 122    |
| AR    | 37      | 115    |
| NE    | 36      | 98     |
| NH    | 34      | 116    |
| ME    | 33      | 65     |
| VT    | 29      | 89     |
| RI    | 28      | 92     |
| MS    | 22      | 75     |
| HI    | 18      | 39     |
| WV    | 15      | 33     |
| SD    | 14      | 33     |
| ND    | 9       | 19     |
| DE    | 5       | 22     |
| PR    | 3       | 18     |
| VI    | 2       | 3      |
| US    | 1       | 3      |

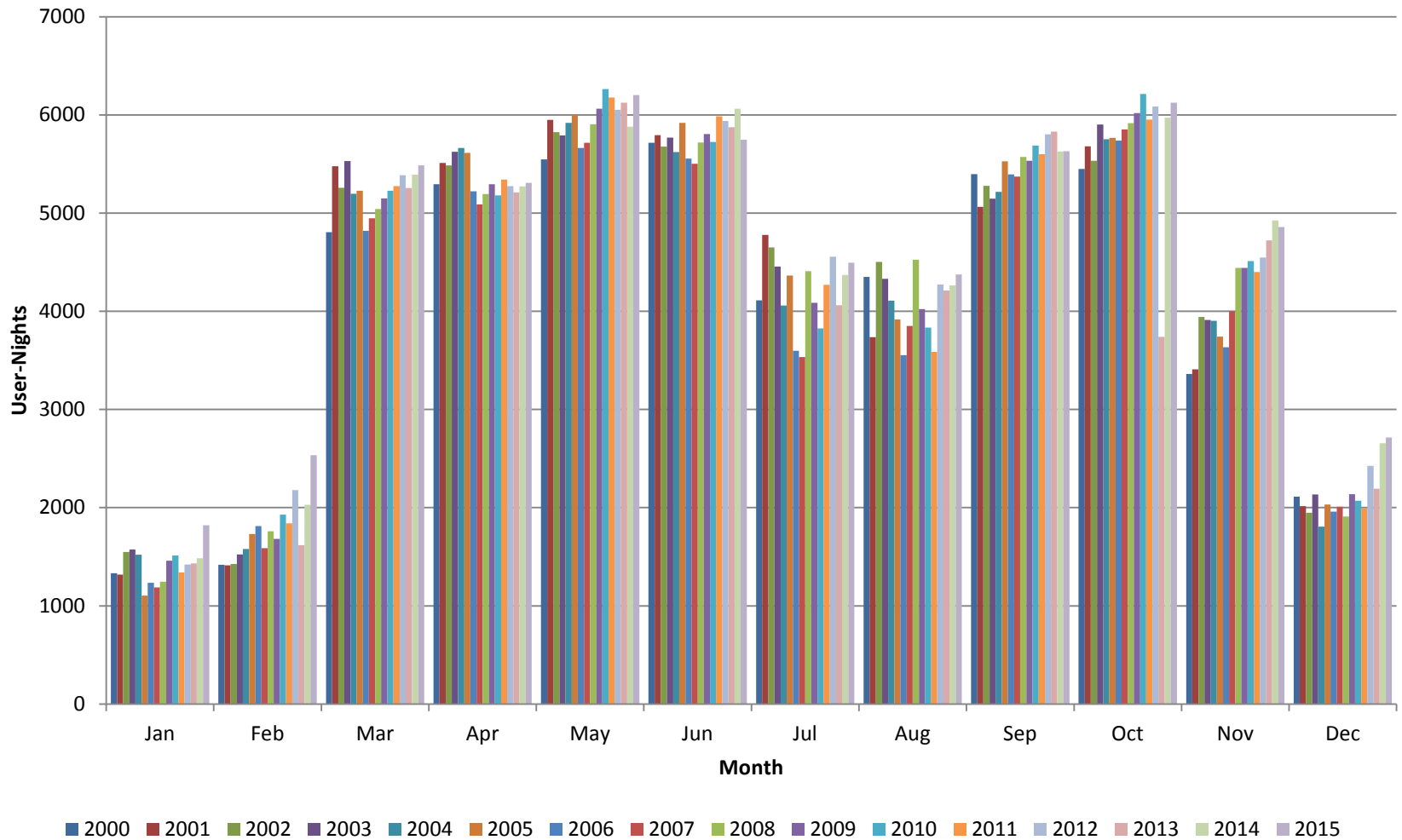
# Backcountry Use Trends, 2000-2015

## Corridor + Non-Corridor



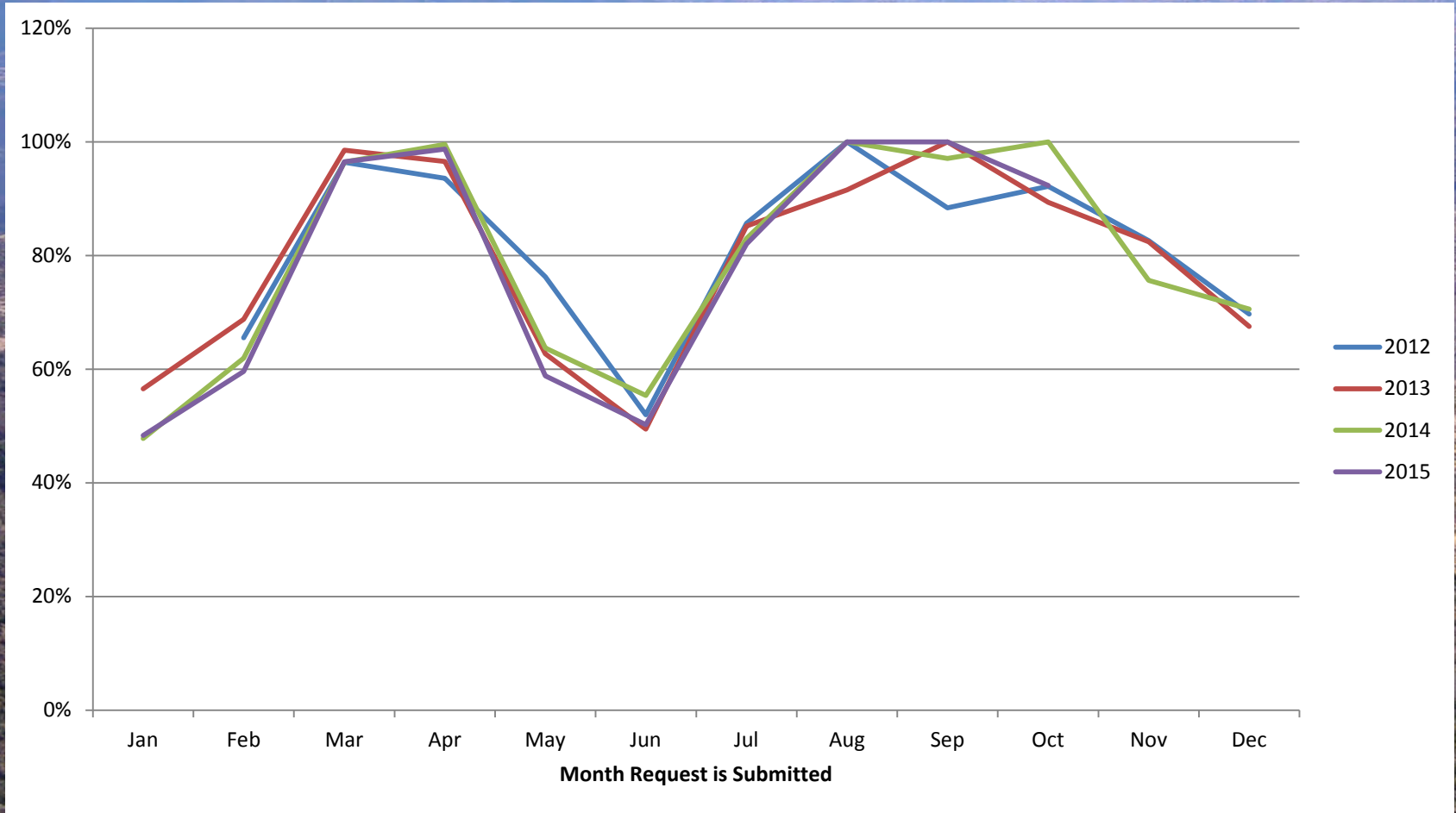
# Backcountry Use Trends, 2000-2015

## Corridor





# Success Rates for Backcountry Requests Submitted On Earliest Allowed Date





# Use Area Details for 2015

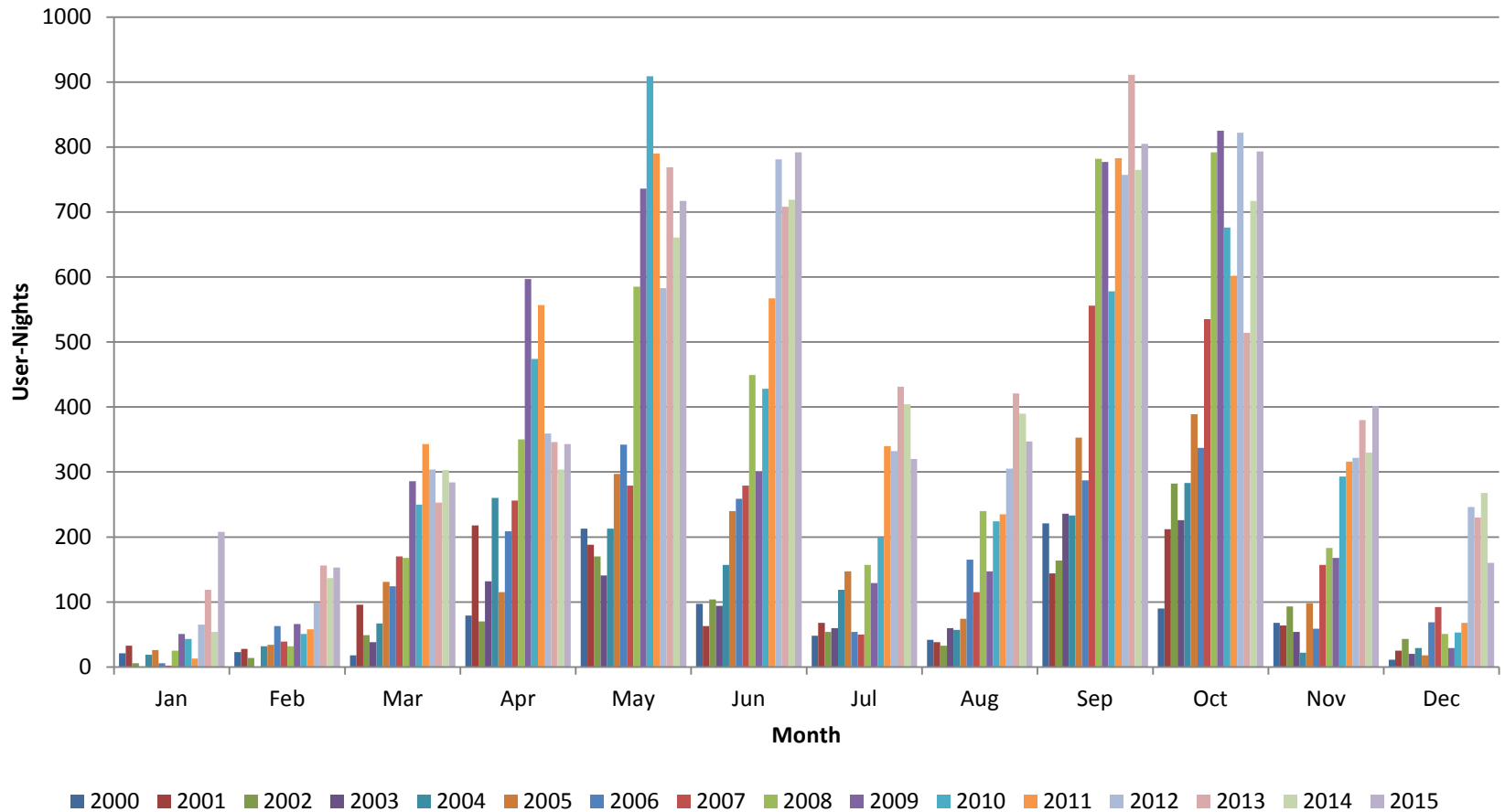
| use_area | user_nights | group_nights | people | permits | first_nights | last_nights | stock | stock_nights |
|----------|-------------|--------------|--------|---------|--------------|-------------|-------|--------------|
| AA9      | 28          | 6            | 28     | 6       | 4            | 5           | 0     | 0            |
| AB0      | 187         | 43           | 89     | 20      | 17           | 17          | 0     | 0            |
| AB9      | 42          | 17           | 35     | 14      | 10           | 8           | 0     | 0            |
| AC9      | 450         | 92           | 163    | 40      | 35           | 35          | 0     | 0            |
| AD9      | 70          | 22           | 32     | 10      | 3            | 3           | 0     | 0            |
| AE9      | 716         | 233          | 234    | 86      | 70           | 58          | 0     | 0            |
| AF9      | 190         | 78           | 95     | 37      | 5            | 4           | 0     | 0            |
| AG9      | 82          | 40           | 47     | 22      | 6            | 4           | 0     | 0            |
| AH9      | 48          | 27           | 28     | 15      | 1            | 5           | 0     | 0            |
| AJ9      | 79          | 34           | 57     | 23      | 8            | 4           | 0     | 0            |
| AK9      | 1411        | 508          | 732    | 276     | 116          | 100         | 0     | 0            |
| AL9      | 11          | 3            | 11     | 3       | 1            | 1           | 0     | 0            |
| AM9      | 539         | 141          | 452    | 115     | 46           | 48          | 0     | 0            |
| AN9      | 20          | 10           | 14     | 7       | 5            | 3           | 0     | 0            |
| AP9      | 286         | 107          | 134    | 54      | 30           | 31          | 0     | 0            |
| AQ9      | 112         | 54           | 48     | 25      | 11           | 10          | 0     | 0            |
| AR9      | 209         | 72           | 57     | 25      | 7            | 17          | 0     | 0            |
| AS9      | 516         | 152          | 165    | 53      | 22           | 24          | 0     | 0            |
| AT9      | 152         | 43           | 73     | 25      | 14           | 18          | 0     | 0            |
| AU9      | 118         | 48           | 47     | 22      | 8            | 4           | 0     | 0            |
| AV9      | 101         | 31           | 61     | 18      | 0            | 2           | 0     | 0            |
| AW7      | 1015        | 279          | 759    | 213     | 103          | 31          | 0     | 0            |
| AW8      | 552         | 136          | 519    | 129     | 18           | 4           | 0     | 0            |
| AX7      | 1041        | 265          | 849    | 220     | 29           | 45          | 0     | 0            |
| AY9      | 1332        | 329          | 947    | 233     | 130          | 194         | 0     | 0            |
| AZ9      | 162         | 43           | 109    | 31      | 4            | 6           | 0     | 0            |
| BA9      | 898         | 325          | 469    | 179     | 73           | 36          | 0     | 0            |
| BB9      | 1845        | 596          | 1255   | 413     | 346          | 189         | 0     | 0            |
| BC9      | 1178        | 380          | 859    | 288     | 52           | 28          | 0     | 0            |
| BD9      | 1564        | 451          | 1298   | 388     | 127          | 144         | 0     | 0            |
| BE9      | 1596        | 446          | 1338   | 381     | 100          | 174         | 0     | 0            |
| BF5      | 1936        | 566          | 1559   | 458     | 289          | 384         | 0     | 0            |
| BG9      | 1570        | 460          | 1246   | 379     | 210          | 165         | 0     | 0            |
| BH9      | 836         | 297          | 699    | 247     | 56           | 18          | 0     | 0            |

| use_area | user_nights | group_nights | people | permits | first_nights | last_nights | stock | stock_nights |
|----------|-------------|--------------|--------|---------|--------------|-------------|-------|--------------|
| BH9      | 836         | 297          | 699    | 247     | 56           | 18          | 0     | 0            |
| BJ9      | 1428        | 457          | 1142   | 384     | 154          | 217         | 0     | 0            |
| BL4      | 796         | 240          | 785    | 233     | 96           | 107         | 0     | 0            |
| BL5      | 380         | 137          | 371    | 133     | 23           | 31          | 0     | 0            |
| BL6      | 140         | 72           | 137    | 70      | 23           | 21          | 0     | 0            |
| BL7      | 2410        | 672          | 1929   | 546     | 253          | 208         | 0     | 0            |
| BL8      | 1125        | 303          | 1025   | 276     | 78           | 61          | 0     | 0            |
| BM7      | 2900        | 821          | 2284   | 649     | 390          | 416         | 0     | 0            |
| BM8      | 1004        | 283          | 917    | 258     | 127          | 98          | 0     | 0            |
| BN9      | 1519        | 507          | 969    | 339     | 194          | 177         | 0     | 0            |
| BO9      | 347         | 122          | 209    | 76      | 7            | 4           | 0     | 0            |
| BP9      | 239         | 88           | 185    | 65      | 13           | 8           | 0     | 0            |
| BQ9      | 769         | 218          | 527    | 147     | 55           | 102         | 0     | 0            |
| BR9      | 1034        | 308          | 337    | 106     | 51           | 36          | 0     | 0            |
| BS9      | 12          | 6            | 2      | 1       | 0            | 0           | 0     | 0            |
| BT9      | 129         | 33           | 46     | 12      | 4            | 4           | 0     | 0            |
| BU9      | 54          | 12           | 25     | 6       | 5            | 4           | 0     | 0            |
| CBG      | 30824       | 9595         | 22936  | 7212    | 5738         | 4358        | 2     | 2            |
| CCG      | 9027        | 2756         | 7323   | 2178    | 1455         | 797         | 0     | 0            |
| CIG      | 14989       | 4413         | 13410  | 3934    | 1339         | 3575        | 0     | 0            |
| LA9      | 783         | 226          | 264    | 80      | 34           | 60          | 0     | 0            |
| LB9      | 393         | 118          | 134    | 43      | 27           | 32          | 0     | 0            |
| LC9      | 368         | 100          | 155    | 43      | 20           | 28          | 0     | 0            |
| LE9      | 76          | 27           | 30     | 9       | 3            | 4           | 0     | 0            |
| LF9      | 29          | 11           | 16     | 6       | 1            | 0           | 0     | 0            |
| LG9      | 21          | 8            | 18     | 6       | 1            | 2           | 0     | 0            |
| LH9      | 40          | 12           | 26     | 7       | 3            | 3           | 0     | 0            |
| LI9      | 27          | 9            | 26     | 8       | 5            | 4           | 0     | 0            |
| LJ9      | 106         | 27           | 31     | 8       | 2            | 4           | 0     | 0            |
| LK9      | 79          | 25           | 47     | 12      | 7            | 6           | 0     | 0            |
| LL9      | 12          | 4            | 12     | 4       | 2            | 1           | 0     | 0            |
| LM9      | 4           | 4            | 1      | 1       | 1            | 1           | 0     | 0            |
| NA0      | 61          | 22           | 34     | 14      | 11           | 9           | 0     | 0            |
| NA1      | 205         | 91           | 187    | 83      | 72           | 73          | 0     | 0            |

| use_area | user_nights | group_nights | people | permits | first_nights | last_nights | stock | stock_unights |
|----------|-------------|--------------|--------|---------|--------------|-------------|-------|---------------|
| NB9      | 20          | 12           | 16     | 10      | 6            | 5           | 0     | 0             |
| NC9      | 61          | 23           | 60     | 22      | 16           | 15          | 0     | 0             |
| NCG      | 195         | 72           | 180    | 66      | 28           | 19          | 0     | 0             |
| ND9      | 35          | 16           | 31     | 14      | 5            | 6           | 0     | 0             |
| NF9      | 195         | 91           | 191    | 88      | 82           | 71          | 0     | 0             |
| NG9      | 30          | 18           | 28     | 17      | 10           | 7           | 0     | 0             |
| NH1      | 572         | 200          | 412    | 150     | 135          | 124         | 0     | 0             |
| NJ0      | 115         | 30           | 58     | 21      | 13           | 10          | 0     | 0             |
| NJ1      | 139         | 39           | 103    | 31      | 19           | 23          | 0     | 0             |
| NJ2      | 171         | 64           | 144    | 53      | 37           | 16          | 0     | 0             |
| NK9      | 110         | 37           | 84     | 27      | 20           | 11          | 0     | 0             |
| NL9      | 48          | 17           | 39     | 13      | 10           | 9           | 0     | 0             |
| NM9      | 15          | 6            | 11     | 5       | 2            | 1           | 0     | 0             |
| NN9      | 27          | 9            | 25     | 8       | 2            | 7           | 0     | 0             |
| NRH      | 261         | 67           | 73     | 18      | 18           | 17          | 73    | 263           |
| SA9      | 75          | 40           | 50     | 26      | 24           | 23          | 0     | 0             |
| SB9      | 27          | 14           | 23     | 11      | 9            | 9           | 0     | 0             |
| SC9      | 61          | 19           | 53     | 15      | 9            | 12          | 0     | 0             |
| SE0      | 29          | 7            | 29     | 7       | 6            | 1           | 0     | 0             |
| SE1      | 82          | 27           | 48     | 19      | 16           | 11          | 0     | 0             |
| SE2      | 145         | 52           | 94     | 36      | 30           | 28          | 0     | 0             |
| SE3      | 192         | 54           | 175    | 51      | 47           | 7           | 0     | 0             |
| SF9      | 66          | 17           | 51     | 11      | 7            | 7           | 0     | 0             |
| SG9      | 54          | 14           | 40     | 9       | 8            | 7           | 0     | 0             |
| SH9      | 24          | 3            | 14     | 2       | 2            | 2           | 0     | 0             |
| SI9      | 28          | 5            | 19     | 3       | 3            | 3           | 0     | 0             |
| TCG      | 2841        | 978          | 1737   | 587     | 566          | 562         | 0     | 0             |
| YUR      | 167         | 61           | 137    | 50      | 8            | 9           | 0     | 0             |

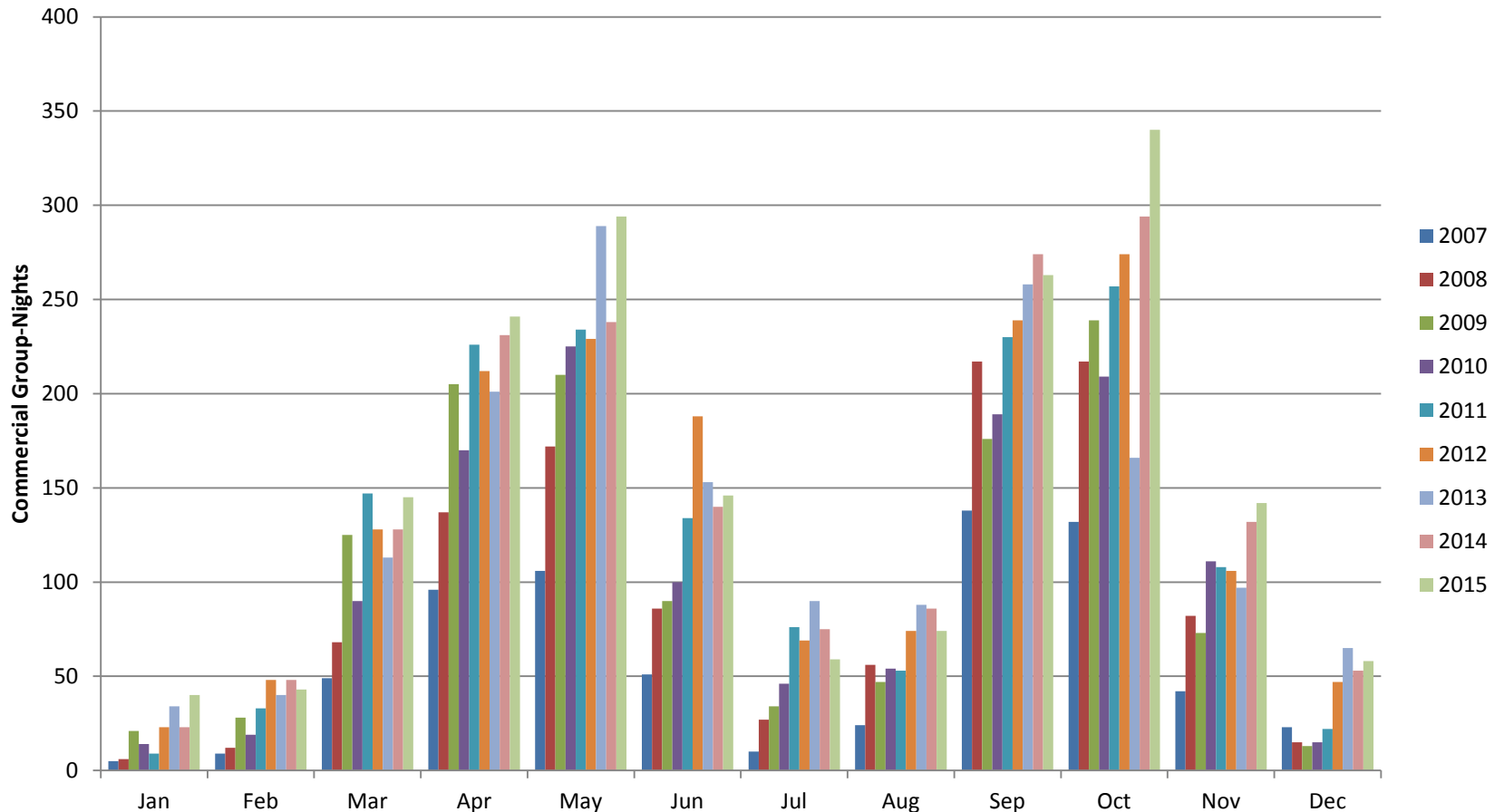


# Backcountry Commercial Use in Corridor, 2000-2015





# Backcountry Commercial Use, 2007-2015 By Group-Night



# Questions?

**Steve Sullivan**  
**Steve\_Sullivan@nps.gov**