



# The Guide: Autumn

## South Rim Maps and Information



Moran Point on Desert View Drive



**Hello, and welcome to Grand Canyon National Park!**

Visiting places like Grand Canyon offers us experiences and exposure to environments completely different from those of our everyday lives. However, having a safe and fulfilling experience when we are out of our element can pose challenges.

At Grand Canyon National Park, this Guide is a great way to get started. In it, you will find information about the services and ranger programs available in the park, as well as a map and information about how to use the free shuttle buses.

The South Rim's visitor centers and contact stations are a terrific next step. They offer opportunities to talk to park rangers and ask questions. Get an overview of what Grand Canyon is about and how best to see it at Grand Canyon Visitor Center and theater; learn about its geologic history at Yavapai Geology Museum; and explore its extensive human history at Verkamp's Visitor Center or Tusayan Museum.

Equally important to a great Grand Canyon experience is understanding how to enjoy the park safely. Fall weather in the park can be extremely variable. Dress in layers and be prepared for hot, cold, sun, rain, and even snow. In addition, keep in mind that fall is mating season for much of the park's wildlife, raising sensitivities to human intrusion. Be sure to use your zoom lens when trying to get a close up photo, and give wildlife their space as they go about the business of being wild.

I have found living and working at Grand Canyon to be an adventure, a challenge, and an unforgettable experience. It is my sincere hope that these tools will help make your Grand Canyon adventure equally unforgettable.

Thank you,

Dave Uberuaga, Superintendent

### Table of Contents

Special Events and Opportunities .....	2
Park Ranger Programs .....	3, 8
Maps and Shuttle Buses .....	4-5
Rim Hiking, Biking, Services .....	6
Canyon Hiking .....	7
Desert View; Safety .....	8

## Top 5 Grand Canyon Activities

### 1. Get Your First Canyon View

From Grand Canyon Visitor Center, walk a short distance north to Mather Point, the classic first view of Grand Canyon. Then, walk the Rim Trail (0.7 mi/1.1 km), ride a shuttle, or drive to Yavapai Point, but be aware that the parking lot may be full. Visit Yavapai Geology Museum and use the binoculars to look for rafts on the river. See map on page 5.

### 2. Visit Scenic Overlooks

Explore nine stunning overlooks along the seven-mile (11 km) Hermit Road by riding the Hermits Rest Route shuttle bus (red route). Stroll between viewpoints and ride the shuttle back when you are tired. See map on pages 4-5. Drive along the 25-mile (37 km) Desert View Drive and enjoy amazing views of the Colorado River as you head east. A visit to the Desert View Watchtower is not to be missed. See map on page 8.

### 3. Go For a Walk or Hike

Wander the Rim Trail, learn about Grand Canyon geology along the Trail of Time, or explore the wonders of the inner canyon. Whatever you decide, taking a walk or hike will give you the opportunity to see some of the park's hidden gems. See map on pages 4-5 and information on page 6 for walks along the rim; see page 7 for advice about hiking into Grand Canyon.

### 4. Attend a Free Park Ranger Program

Learn about Grand Canyon from the park rangers and volunteers who know it inside and out. Hear the dynamic story of how the canyon formed or be inspired by the California condor's return to Grand Canyon. Tour Ancestral Puebloan ruins or learn about local history. Whatever your interests, you will find a program to suit you on page 3 or 8.

### 5. Enjoy the Sun and Stars

Grand Canyon's clean air and expansive vistas offer the opportunity for you to watch the sun rise or set and see crystal clear night skies. Mohave, Hopi, Yavapai, and Yuki points provide grand east and west views; perfect for sunrise and sunset.

DATE	SUNRISE	SUNSET
September 1	6:01 am	6:55 pm
September 15	6:11 am	6:35 pm
October 1	6:24 am	6:11 pm
October 15	6:36 am	5:52 pm
November 1	6:52 am	5:32 pm
November 15	7:06 am	5:20 pm
December 1	7:21 am	5:14 pm

FULL MOON DATE	RISE TIME
September 30	6:22 pm
October 29	5:31 pm
November 28	5:33 pm

## Need Information?

Bring this Guide and your questions to a visitor center. Talk to park rangers, view exhibits, and learn about Grand Canyon. Grand Canyon Association bookstores and a National Park Service passport cancellation stamp are available at these facilities, except for the Backcountry Information Center. The stamp is also available at Indian Garden, Phantom Ranch, and North Rim Visitor Center (closes October 15).

### South Rim Village

**GRAND CANYON VISITOR CENTER**  
Plan your visit, see the park film, and learn about Grand Canyon with the park's newest exhibits. Books & More store, bicycle rental, food service, and Mather Point nearby. 8 am-5 pm

**BACKCOUNTRY INFORMATION CENTER**  
Learn about inner-canyon hiking; obtain backcountry information and permits. 8 am-noon; 1-5 pm

**KOLB STUDIO**  
View exhibits in the restored 1904 Kolb brothers' home and photography studio. 8 am-7 pm

**VERKAMP'S VISITOR CENTER**  
Visit one of the oldest buildings in Grand Canyon Village and explore more than 100 years of community history. 8 am-7 pm

**YAVAPAI GEOLOGY MUSEUM**  
Find answers to your geology questions with 3D maps and exhibits about the geologic story you see through the panoramic windows. 8 am-7 pm

### Desert View

**DESERT VIEW VISITOR CENTER**  
Explore how Grand Canyon inspired artists, writers, musicians, and conservationists. 9 am-5 pm

**TUSAYAN MUSEUM AND RUIN**  
Look into the past and present-day lives of thriving American Indian communities. Museum: 9 am-5 pm

**Elk and deer can be especially aggressive in fall and will defend their territory. Keep a safe distance of 100 feet (30 m).**



National Park Service  
U.S. Department of the Interior

### Grand Canyon National Park

Located entirely in northern Arizona, the park encompasses 277 miles of the Colorado River and adjacent uplands. One of the most spectacular examples of erosion anywhere in the world, Grand Canyon is unmatched in the incomparable vistas it offers to visitors on the rim. Grand Canyon National Park is a World Heritage Site.

#### Superintendent

David V. Uberuaga

PO Box 129  
Grand Canyon, AZ 86023

#### Park Headquarters

928-638-7888

#### Website

[www.nps.gov/grca/](http://www.nps.gov/grca/)



*The Guide* is published by Grand Canyon National Park, supported by your user fees; it is available in French, German, Spanish, Italian, Japanese, Chinese, and Korean. An *Accessibility Guide* is also available.

The National Park Service cares for the special places saved by the American people so that all may experience our heritage.

EXPERIENCE YOUR AMERICA™

# Special Events and Opportunities

## Grand Canyon Music Festival

September 7–8

7:30 pm

### Shrine of the Ages

Mezzo-soprano Cabiria Jacobsen, tenor Kirk Dougherty, and pianist Jon Klibonoff perform “A Night at the Opera,” “The Art of Song,” and songs from *The Great American Songbook*.

Tickets: [www.grandcanyonmusicfest.org](http://www.grandcanyonmusicfest.org), 800-997-8285, El Tovar Hotel concierge, or at the door.

## Hispanic Heritage Days Celebration

September 30 to October 6

Mexican folk art and the art of Grand Canyon native American cultures share deep connections. Folk artists from the state of Oaxaca, Mexico will be showcasing their work at different locations throughout the park. View artists creating sculptures, candles, carvings and other masterpieces. Check at visitor centers and hotels for additional information and special program times.

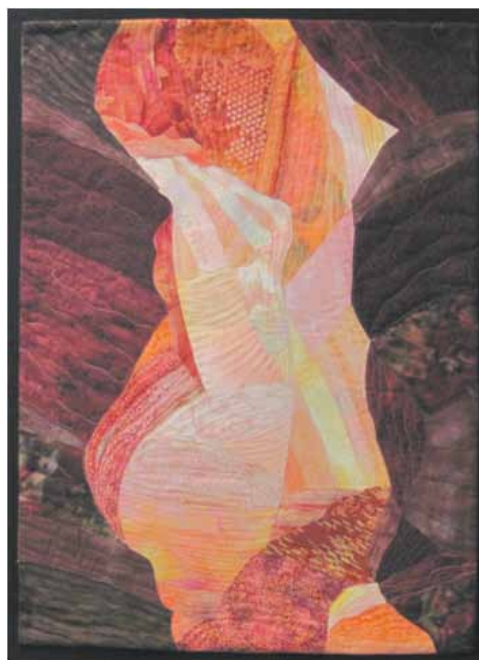
## Earth Science Week

October 14 - 20

### National Fossil Day

October 17

Grand Canyon is an ideal place to celebrate Earth Science Week. A superlative geologic classroom, the park boasts one of the most scenic landscapes on earth. Check at National Park Service visitor centers for special program information or visit <http://www.nps.gov/grca/planyourvisit/earth-sci-week.htm>



*Bodies of Stone: Antelope Canyon* by Bobbie Sullivan. Art quilt in cotton, paint, pencil, and thread, 21" x 25", 2010.

## Enjoy Art

Grand Canyon hosts two Artist-in-Residence programs—a seasonal program on the North Rim and a year-round program on the South Rim. Ask in visitor centers about times and locations for a limited number of free, family-friendly programs with the artists or call 928-638-7616 for recorded information. For additional program information and artist opportunities visit <http://www.nps.gov/grca/supportyourpark/air.htm>.

### September

Quilt/textile artist Bobbie Sullivan, from Scituate, Massachusetts, will offer a hands-on demonstration/workshop and an evening program talk.

### October

Mixed media painter Tay Lee, from La Mirada, California, will conduct informal plein air demonstrations along the rim.

## Relax on the North Rim

The far reaches of the North Rim provide visitors with a tranquil experience. Open mid-May through mid-October, the North Rim is a five-hour, 215-mile (346 km) drive from Grand Canyon Village. Highway 67 from Jacob Lake, Arizona, to the North Rim closes in late autumn for the winter season. For road conditions call 511 in Arizona or 888-411-7623 from outside the state. Lodging and camping is available; reservations strongly recommended.

### Grand Canyon Lodge

877-386-4383 or [www.foreverresorts.com](http://www.foreverresorts.com)

### North Rim Campground

877-444-6777 or [www.recreation.gov](http://www.recreation.gov)



## GRAND CANYON ASSOCIATION

INSPIRE. EDUCATE. PROTECT.

### Be a Part of Something Grand

*You can make a difference at Grand Canyon National Park!*

With your help, the Grand Canyon Association (GCA) supports an impressive variety of projects and programs that help ensure all visitors are able to enjoy the awe-inspiring wonder of Grand Canyon.

As the park's official nonprofit partner, GCA cooperates with the National Park Service to operate bookstores in seven locations in the park. Bookstore purchases help fund new exhibits, scientific research, trail restoration, wildlife monitoring, ecological restoration, support for the arts, Junior Ranger and education programs, and historic building preservation.

#### Discover the Park With the Grand Canyon Field Institute

From hiking and backpacking to yoga and photography, you can participate in educational classes throughout the park. Call 866-471-4435 or visit [www.grandcanyon.org/fieldinstitute](http://www.grandcanyon.org/fieldinstitute)

#### Take Grand Canyon Home With You

Join the Grand Canyon Association today. Members receive exclusive benefits and discounts. For information, visit a GCA bookstore, call toll-free 800-858-2808, or visit [www.grandcanyon.org](http://www.grandcanyon.org).



Artists paint along the rim during the Celebration of Art quick draw competition.

## 4<sup>th</sup> Annual Celebration of Art

September 8–12

4pm

Artist plein air demonstrations along the rim adjacent to El Tovar.

### September 13

Sunrise until 10 am

Artists paint along the South Rim between Mather Point and Kolb Studio.

7pm

Special evening presentation at Shrine of the Ages

### September 14

9–11 am

Quick draw competition with artists painting between Mather Point and Kolb Studio.

### Noon

Auction of quick draw paintings on the north lawn of El Tovar.

7–9 pm

Buyer's preview and awards reception at Kolb Studio.

### September 15 11 am–1 pm

Opening reception and awards ceremony at Kolb Studio.

### September 16–21

New this year, award-winning artist Linda Glover Gooch will teach a Grand Canyon Field Institute/Scottsdale Artists' School plein air painting workshop at the South Rim.

The Fourth Annual Celebration of Art is presented by the Grand Canyon Association and Arizona Public Service on behalf of Grand Canyon National Park. This event offers the unique opportunity to see and purchase works of art from some of the best landscape painters in the country. Proceeds support the goal of funding a permanent art venue at Grand Canyon's South Rim. Information: [www.grandcanyon.org/celebration.asp](http://www.grandcanyon.org/celebration.asp)

# Park Ranger Programs

Discover Grand Canyon with free programs given by park rangers and volunteers; no reservations needed. Programs take place in or near Grand Canyon Village; see page 8 for Desert View programs. Parking is limited; ride the free shuttle buses to program locations.

Programs may be cancelled during inclement weather. Children must be accompanied by an adult at all programs. All program times are mountain standard; Arizona does not recognize daylight-saving time.

Time	Programs	Meeting Location	Duration	Special Notes
9:30 am	<b>Rim Nature Walk</b> Explore what lives and grows along the South Rim during a leisurely walk in one of the most biologically diverse parks in the United States.	Yavapai Geology Museum	60 minutes	
11 am	<b>Mather Point Talk</b> Discover some of the many treasures of Grand Canyon. Topics vary daily.	Mather Point Amphitheater	30 minutes	Great for Junior Rangers! Accessible.
1:30 pm	<b>History Walk</b> Hear stories of people's enduring relationship with Grand Canyon on a walk through the village historic district.	Verkamp's Visitor Center	60 minutes	Perfect for train passengers. Parking is limited; ride the Village Route shuttle bus.
2 pm	<b>Condor Talk</b> Learn about the majestic and endangered California condor and its reintroduction to northern Arizona.	Mather Point Amphitheater	30–45 minutes	Accessible.
3 pm	<b>Geology Walk</b> Discover Grand Canyon's amazing geologic story. Why is it so deep, wide, and grand? Why does it exist only here in the world?	Yavapai Geology Museum	60 minutes	
3:30 pm	<b>Elk-ology</b> Discover the secrets behind elk survival, understand their behavior, and learn about the park's management concerns.	El Tovar Lawn	30 minutes	Parking is limited; ride the Village Route shuttle bus. Accessible.
7 pm	<b>Evening Program</b> Relax in a beautiful auditorium and enjoy a presentation on Grand Canyon's fascinating natural or cultural history. Check visitor centers for topics.	McKee Amphitheater Sept. 4–8; Shrine of the Ages Sept. 9 to Nov. 30	60 minutes	Accessible.

## Inside the Canyon

Going to Phantom Ranch or Indian Garden? Join a park ranger to discover the many wonders of the inner canyon. Programs vary and cover a wide range of natural and cultural history topics. *These programs are offered in Grand Canyon's backcountry and only accessible by a long, strenuous hike or mule ride.*

### Indian Garden, Intermittent

Check the bulletin board for program topics, locations, and times. Accessible only by hiking 4.5 miles (7.2 km) down Bright Angel Trail.

### Phantom Ranch, 4 pm and 7:30 pm, Daily

Check bulletin boards for program locations and topics. Junior Ranger activity book available. Accessible only by hiking or a mule ride to the bottom of Grand Canyon.

## Special Programs

As staffing allows and weather permits, additional programs and walks may be offered. Check visitor centers for times and locations of potential fossil walks, Kolb Studio tours, moon walks, star talks, and graveyard tours.

## Discover the Canyon by Phone

Enjoy two-minute interpretive park ranger talks at 30 locations throughout the park. Wherever you see a cell phone tour sign, dial 928-225-2907 and enter the stop number. There is no additional charge; standard rates apply. Funded by the Grand Canyon Association.

## Learn in an Outdoor Classroom

**Teachers: Class Trips, Workshops, and Distance Learning**  
928-638-7931  
[www.nps.gov/grca/forteachers/](http://www.nps.gov/grca/forteachers/)

### Expeditions for Teens

[www.nps.gov/grca/forforkids/camp.htm](http://www.nps.gov/grca/forforkids/camp.htm)

## Get Your Badge On

Children ages four and older can pick up a free Junior Ranger book from any visitor center. Have fun learning about Grand Canyon, complete activities, attend a park ranger program, and earn a badge and certificate. Unique Junior Ranger programs are also available at Phantom Ranch, North Rim (May to October), and more than 250 national parks, seashores, and monuments nationwide.

This program is generously supported by the Grand Canyon Association.



© KRISTEN CALDON

# Ride, Walk, or Bike Grand Canyon



## Shuttle Bus FAQ

**Are the shuttle buses free?**

Yes, park entrance fees include shuttle bus transportation.

**How do the shuttle buses work?**

Running like a city bus system, three shuttle bus routes stop at shops, visitor centers, and popular viewpoints around the South Rim. Just wait at any bus stop and enjoy the ride. **Note:** During the busy part of the day, you may have to wait for two shuttle buses to board.

**What are the shuttle bus rules?**

1. No eating or open drink containers.
2. No pets, except service animals.
3. All strollers must be collapsed prior to entering the bus. No oversized strollers such as jogging strollers. Baby-back carriers must be removed when seated.
4. Shuttle buses can accommodate two or three bicycles, but not tag-a-longs or baby trailers. Riders must load and unload their bicycles.
5. Shuttle buses only stop at designated bus stops.

**How can I tell the difference between shuttle bus routes?**

All National Park Service shuttle buses are white and green, but the front of the bus will say the route color and name.

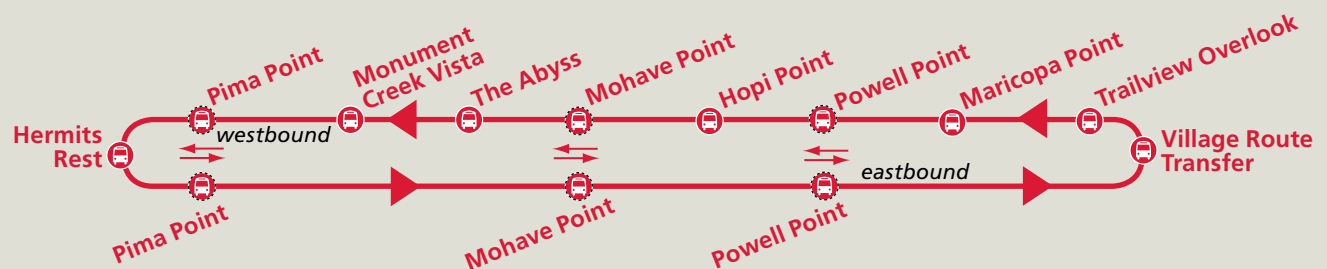
**Will my wheelchair fit on the bus?**

Buses are equipped with ramps to accommodate passengers in wheelchairs smaller than 30 inches wide by 48 inches long (76 by 122 cm). Most motorized scooters will not fit on buses.

The Scenic Drive Accessibility Permit allows visitors with mobility issues entry to some areas closed to public traffic. The permit is available at entrance gates, visitor centers, and hotel lobbies.

## LEGEND

- Drivable park roads
- Village Route and bus stop
- Kaibab/Rim Route and bus stop
- Hermits Rest Route and bus stop
- ▲ Arrows indicate direction of travel
- Shuttle bus gate
- Paved Rim Trail
- Unpaved Rim Trail
- Paved Greenway Trail
- ☒ Drinking water
- ☒ First aid
- ☒ Information
- ☒ Parking
- ☒ Picnic area
- ☒ Restrooms
- ☒ Telephone
- ☒ Theater
- ☒ Trailhead



## Ride the Free Shuttle Buses

Reducing air pollution and taking nearly a half-million vehicles off park roads each year, shuttle buses offer a hassle-free transportation option.

### HERMITS REST ROUTE— RED ON MAP ABOVE

This 7-mile (11 km) route takes 80 minutes round-trip. Shuttles stop at nine overlooks westbound, but only Pima, Mohave, and Powell points going east from Hermits Rest. Restrooms at Hopi Point; water, snack bar, restrooms, and gift shop at Hermits Rest.

Buses run:

5 am, 5:15 am, 5:45 am, 6:15 am, 6:30 am and then every 15 minutes until sunset. Bus makes one final run during the last hour after sunset.

### HIKER'S EXPRESS NOT SHOWN ON MAP ABOVE

Service to South Kaibab Trailhead. Bus begins at Bright Angel Lodge, then stops at Backcountry Information Center, Grand Canyon Visitor Center, and South Kaibab Trailhead.

Bus leaves Bright Angel Lodge at:  
5 am, 6 am, 7 am in September  
6 am, 7 am, 8 am in October  
7 am, 8 am, 9 am in November

### VILLAGE ROUTE— BLUE ON MAP ABOVE

This 50-minute round-trip route provides transportation between Grand Canyon Visitor Center, hotels, restaurants, and campgrounds. Scenic canyon views are a short walk from some stops.

Buses run every:

30 minutes 5 am–6:30 am  
15 minutes 6:30 am–7:30 pm  
30 minutes 7:30 pm–10 pm; visitors dining in Grand Canyon Village need to be at a bus stop no later than 9:30 pm.

### KAIBAB/RIM ROUTE— ORANGE ON MAP ABOVE

This 50-minute round-trip route stops at five viewpoints and Grand Canyon Visitor Center. This route and the morning Hiker's Express shuttle bus offer the only access to South Kaibab Trailhead.

Buses run every:

30 minutes 5–6:30 am  
15 minutes 6:30 am to one hour after sunset



## Explore in Your Car

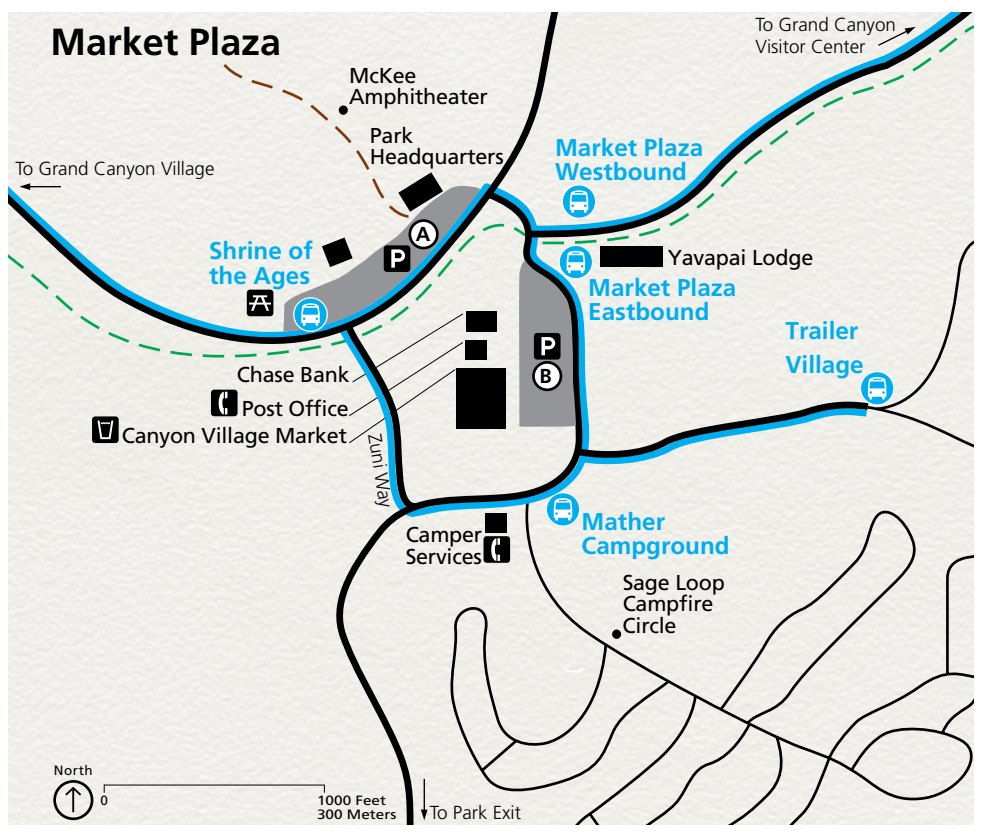
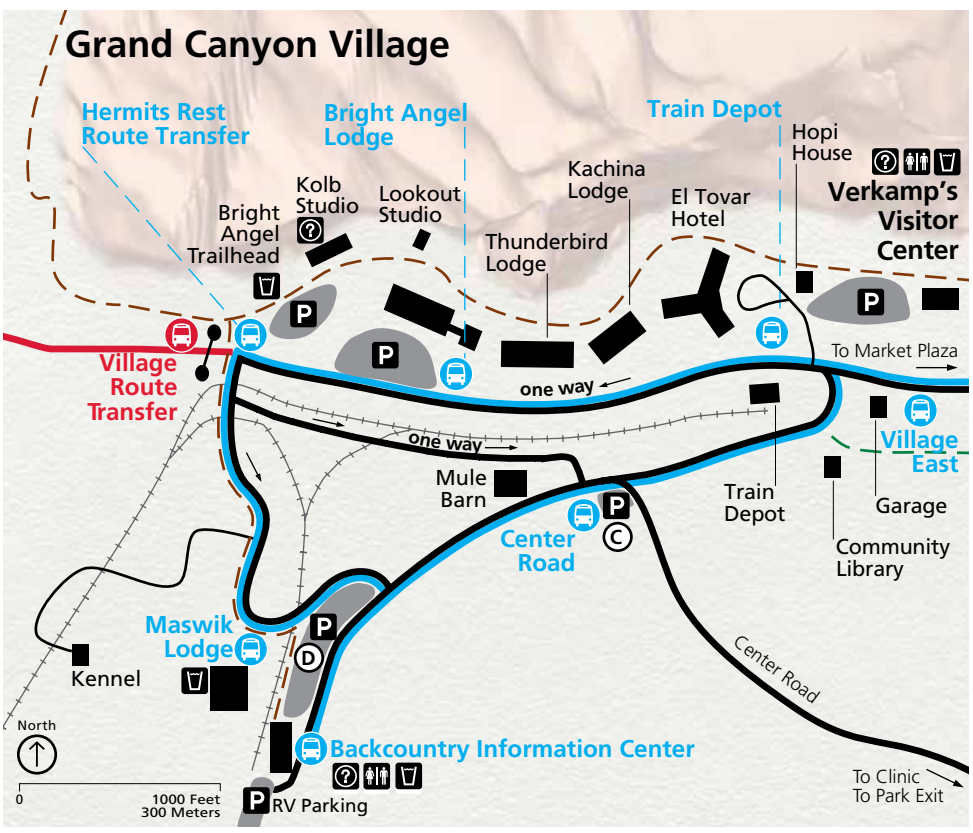
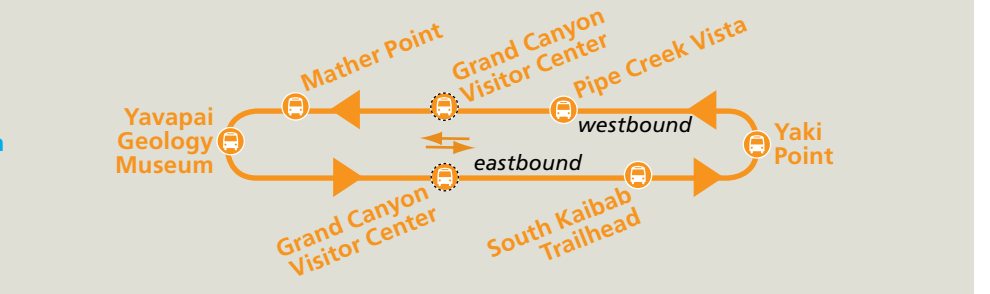
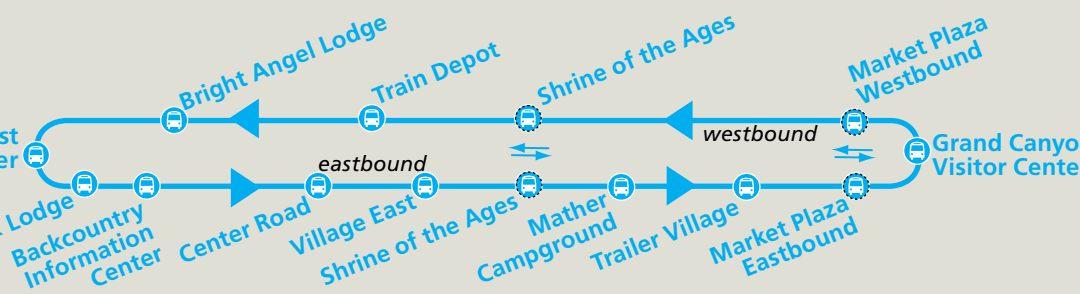
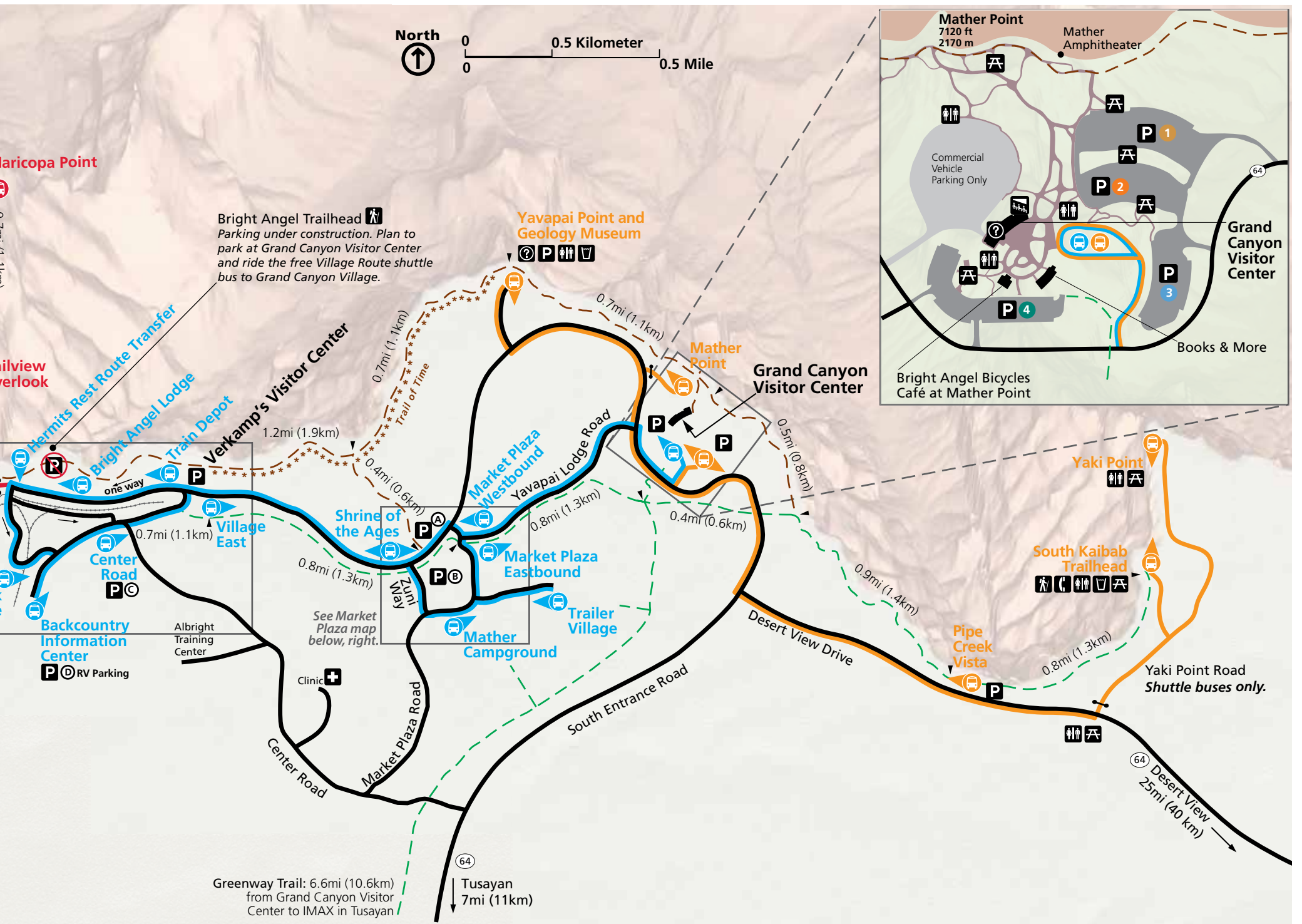
**You can drive anywhere there is a solid black line on the map above.**

You cannot drive the Hermit Road or Yaki Point Road; free shuttle buses operate in these areas. If you would like to explore more of the park by vehicle, consider driving to Desert View (see page 8).

All parking lots in Grand Canyon Village are located near free shuttle bus stops. Parking lots 1–4 are at Grand Canyon Visitor Center. Lot 1 includes auto, RV, and trailer parking.

Parking lots A (Park Headquarters) and B (Market Plaza) are large and may have empty spaces. Parking lot C (near Center Road in Grand Canyon Village) is small; lot D (Backcountry Information Center) offers auto parking in the north end and RV and trailer parking in the south end.

Do not park along the roadside, except where signs or lines on the road indicate it is permissible.



Note: Page 6 lists the specific locations and hours of operation for lodges, restaurants, shops, and services shown on the maps above.

# Rim Hiking and Biking Explorations

## Wander the Rim Trail

The Rim Trail offers a diverse hiking experience along 13 miles (21 km) of the canyon, shown by brown or green dashed lines on the map on pages 4–5. From a short 30-minute sunrise walk to a full afternoon hike, choose your adventure. The Rim Trail is wheelchair accessible from Lookout Studio to South Kaibab Trailhead. Distances and times are one way.

### EASY, POPULAR HIKES

Wide, paved trail; accessible by strollers and wheelchairs with assistance

#### Yavapai Geology Museum to Verkamp's Visitor Center

See and touch canyon rocks along the award-winning Trail of Time  
1.3 miles (2.1 km), 1–2 hours

#### Verkamp's Visitor Center to Kolb Studio

Explore local history in the Village Historic District  
0.6 miles (1 km), 20–30 minutes

#### Yavapai Point to Mather Point

View the Colorado River and Phantom Ranch  
0.7 miles (1.1 km), 30–45 minutes

### EASY, LESS-TRAVELED HIKES

Little elevation gain

#### South Kaibab Trailhead to Mather Point

Great views of an inner-canyon trail; paved  
2.1 miles (3.4 km), 1.5–2 hours

#### Monument Creek Vista to Hermits Rest

Accessible by bicycle or on foot; paved  
2.8 miles (4.5 km), 2–2.5 hours

#### Hopi Point to Powell Point

Dynamic views of the canyon; unpaved  
0.3 miles (0.5 km), 30–45 minutes

### MODERATE HIKES

Some elevation gain and/or rough, narrow trail

#### Mohave Point to Monument Creek Vista

Unpaved trail with great views  
2.0 miles (3.2 km), 1.5–2 hours

#### Hermits Rest Route Transfer to Trailview Overlook

Paved, steep grade, overlooks Grand Canyon Village and Bright Angel Trail  
0.7 miles (1.1 km), 20–30 minutes

## Pedal the Greenway Trail

Explore the Greenway Trail on a bicycle; follow the green dashed lines on the map on pages 4–5.

Travel along the canyon rim and through ponderosa pine forests. Bicycles are only permitted on the Greenway Trail and on all paved and some unpaved roads open to the public.

Bicycles are prohibited on the Rim Trail and inner-canyon trails. Bicyclists must obey all traffic regulations. Ride single file with the flow of traffic and wear bright colors and a helmet. On Hermit Road, bicyclists must pull to the right shoulder and dismount when buses are attempting to pass.

### Bright Angel Bicycles

Bicycle rentals and guided tours; located at Grand Canyon Visitor Center. Through October 31, 8 am–6 pm; November 1–15, 10 am–4 pm, weather permitting. 928-814-8704 or [www.bikegrandcanyon.com](http://www.bikegrandcanyon.com)

# South Rim Services and Facilities

## Food and Beverage

### AT BRIGHT ANGEL BICYCLES

#### Café at Mather Point

Through October 31, 6 am–8 pm; beginning November 1, 7 am–6 pm

### AT BRIGHT ANGEL LODGE

**The Arizona Room** Lunch 11:30 am–3 pm through October 30; no lunch service beginning October 31. Dinner 4:30–10 pm (no reservations); lounge 4:30–10 pm

**Bright Angel Coffee House** 5:30–10 am

**Bright Angel Fountain** Through September 30, 10 am–7 pm; beginning October 1, 11 am–5 pm, weather permitting

#### Bright Angel Restaurant

Through September 30, breakfast 6–10:45 am; beginning October 1, 6:30–10:45 am. Lunch 11:15 am–4 pm; dinner 4:30–10 pm; lounge 11 am–11 pm

### AT CANYON VILLAGE MARKET

**Canyon Village Deli** 8 am–6 pm; Thanksgiving Day 9 am–2 pm

### AT EL TOVAR HOTEL

#### El Tovar Dining Room

Breakfast 6:30–10:45 am; lunch 11:15 am–2 pm. Through September 30, dinner 4:30–10 pm; beginning October 1, dinner 5–10 pm; reservations required 928-638-2631, ext. 6432. Lounge 11 am–11 pm

### AT HERMITS REST

**Hermits Rest Snack Bar** 9 am–5 pm

### AT MASWIK LODGE

**Maswik Cafeteria** 6 am–10 pm

**Maswik Pizza Pub** 11 am–11 pm

### AT YAVAPAI LODGE

**Yavapai Cafeteria** Through September 30, 6 am–9 pm; beginning October 1, 6:30 am–8 pm. Closed November 4–20. Open November 21–24, 6:30 am–8 pm. Closed November 25–30.

## Books and Gifts

**Books & More** 8 am–7 pm

**Bright Angel Lodge** 7 am–10 pm

**El Tovar Hotel** 7 am–10 pm

**Hermits Rest Gift Shop** 9 am–5 pm

**Hopi House** Through October 19, 9 am–6 pm; beginning October 20, 9 am–5 pm

**Kolb Studio** 8 am–7 pm

**Lookout Studio** 9 am–5 pm

**Maswik Lodge** 7 am–10 pm

**Verkamp's Visitor Center** 8 am–7 pm

**Yavapai Geology Museum** 8 am–7 pm

**Yavapai Lodge Curio** Through October 19, 8 am–8 pm; beginning October 20, 9 am–5 pm

## Lodging

**Bright Angel Lodge** \$72–350

**El Tovar Hotel** \$178–440

**Kachina Lodge** \$180–191

**Maswik Lodge** \$92–176

**Thunderbird Lodge** \$180–191

**Yavapai Lodge** \$120–166

Same-day reservations: 928-638-2631

Advance reservations: 888-297-2757

[www.grandcanyonlodges.com](http://www.grandcanyonlodges.com)

## Services

**ATM** Chase Bank and Maswik Lodge

### Canyon Village Market

Through September 30, 8 am–9 pm; beginning October 1, 8 am–7 pm. Thanksgiving Day 9 am–3 pm

### Chase Bank

Monday to Thursday 9 am–5 pm; Friday 9 am–6 pm. 928-638-2437

### Garage

Emergency repairs and tow service. 8 am to noon and 1–5 pm. 928-638-2631

### Kaibab Learning Center

Day care for one to 12 year olds; immunization records required. Monday to Friday, 7:30 am–5:30 pm. 928-638-6333

### Kennel

Dogs and cats need proof of inoculations. 7:30 am–5 pm, 928-638-0534

For retrieval after 5 pm: 928-638-2631

### Laundry and Showers at Camper Services

Through September 14, 6 am–11 pm; last laundry load 9:45 pm. September 15 to October 26, 7 am–9 pm; last laundry load 7:45 pm. Beginning October 27, 8 am–6 pm; last laundry load 4:45 pm.

### Lost and Found

928-638-7798, 928-638-2631

### Post Office

Monday to Friday 9 am–4:30 pm; Saturday 11 am–1 pm; closed Sunday and federal holidays. 928-638-2512

### Religious Services

See schedules at Mather Campground, Shrine of the Ages, post office, Grand Canyon Visitor Center and Park Headquarters.

### Taxi

928-638-2822

### Wifi and Public Computer Access

Park Headquarters: 8 am–5 pm daily. Public computer access 8 am–4:30 pm, Monday to Friday except federal holidays. Community Library: Monday to Saturday, 10:30 am–5 pm.

## Camping

**Mather Campground (NPS)** \$18/night; no hook-ups; dump station available. Maximum

vehicle length 30 feet (9.1 m). Reservations:

877-444-6777 or [www.recreation.gov](http://www.recreation.gov)

### Trailer Village (Xanterra Parks & Resorts)

\$35/night for two people; \$3.50 for each additional person over age 16. Pull-through sites with hook-ups. Same-day reservations: 928-638-2631. Advance reservations: 888-297-2757 or [www.grandcanyonlodges.com](http://www.grandcanyonlodges.com)

## Emergencies

Dial 911

From hotel rooms dial 9-911

### North Country Grand Canyon Clinic

Urgent care available through October 14, daily 8 am–6 pm; beginning October 15, Monday to Friday 8 am–5 pm, (928) 638-2551

# Tusayan, Arizona

Located seven miles (11 km) south of Grand Canyon Village on Highway 64.

## Lodging

**Best Western Grand Canyon Squire Inn**

928-638-2681

**Canyon Plaza Resort** 928-638-2673; pets ok

**Grand Hotel** 928-638-3333; pets ok

**Holiday Inn Express** 928-638-3000

**Red Feather Lodge** 928-638-2414; pets ok

**7 Mile Lodge** 928-638-2291

## Camping

**Camper Village (Private)** Hook-ups, coin-operated showers, laundry, propane, dump station, and store. 928-638-2887 or [www.grandcanyoncampervillage.com](http://www.grandcanyoncampervillage.com)

### Ten-X Campground (Kaibab National Forest)

Closes for season with last camping night September 30; re-opens April 2013. Located two miles (3.2 km) south of Tusayan. \$10 per vehicle per night; no hook-ups or showers. Most individual sites first-come, first-served. Reserve some individual and all group sites: 877-444-6777 or [www.recreation.gov](http://www.recreation.gov)

## Additional Resources

**Arizona Highway Information** Dial 511 or 888-411-ROAD; [www.az511.gov](http://www.az511.gov)

### Grand Canyon Chamber of Commerce

888-472-2696, [www.grandcanyonchamber.com](http://www.grandcanyonchamber.com)

### Kaibab National Forest

Tusayan Ranger District ranger station, Monday to Friday, 8 am–4:30 pm. 928-638-2443

## Paid Activities

**Transportation Desks** Get help with tours and

trips at Bright Angel Lodge: 6 am–8 pm; Maswik Lodge: 6 am–6:30 pm; Yavapai Lodge: 8 am–6 pm. 928-638-2631, ext. 6015

[www.grandcanyonlodges.com](http://www.grandcanyonlodges.com)

**Mule Trips** Two-day trips to Phantom

Ranch depart daily. A 3-hour forest ride to The Abyss departs twice daily.

**Bus Tours** Daily Desert View, Hermits

Rest, sunrise, and sunset tours.

**Phantom Ranch** Dormitory and cabin

space located at the bottom of the canyon. Reservations required: 888-297-2757.

## Paid Activities

Fixed-wing and helicopter tours.

**Grand Canyon Airlines** 800-528-2413

**Grand Canyon Helicopters** 800-541-4537

**Maverick Airlines** 800-218-9932

**Maverick Helicopters** 800-962-3869

**Papillon Grand Canyon Helicopters**

800-528-2418

**Vision Airlines** 800-256-8767

**Westwind Aviation** 888-869-0866

### Grand Canyon Apache Stables

Horseback riding reservations: 928-638-2891

### Grand Canyon Dinner Theatre & Steakhouse

Family-style dining and 75-minute evening performance. 928-638-0333 or [www.grandcanyondinnertheatre.com](http://www.grandcanyondinnertheatre.com)

### IMAX Theater

Movie shown every hour on the half hour. Through October 31, first show 8:30 am, last show 8:30 pm; beginning November 1, first show 10:30 am, last show 6:30 pm. Food and gifts available. 928-638-4629

## River Rafting–In & Out of Park

### SMOOTH-WATER RAFT TRIPS

#### Colorado River Discovery

888-522-6644 or [www.raftthecanyon.com](http://www.raftthecanyon.com)

### WHITewater RAFT TRIPS

See [www.nps.gov/grca/](http://www.nps.gov/grca/) for information about reserving multi-day whitewater raft trips.



# Desert View



## Park Ranger Programs

### Journey Through Time

11 am and 1:30 pm

### Daily at Tusayan Museum

Explore the remains of an Ancestral Puebloan village while learning about what life was like at Grand Canyon 800 years ago. Program includes a walk along a 0.1-mile (0.2 km) flat, paved trail. Program lasts 30–45 minutes. Accessible. See page 3 for programs in Grand Canyon Village.

## Books and Gifts

**Desert View Trading Post** Through October 19, 9 am–6 pm; beginning October 20, 9 am–5 pm

**Desert View Visitor Center** 9 am–5 pm

**Desert View Watchtower** Through October 19, 9 am–6 pm; beginning October 20, 9 am–5 pm

**Desert View Watchtower Stairs** Through October 19, 9 am–5:30 pm; beginning October 20, 9 am–4:30 pm

**Tusayan Museum and Ruin** 9 am–5 pm; located 3 miles (4.8 km) west of Desert View



Desert View Watchtower

## Camping

**Desert View Campground (NPS)** Closes mid-October. \$12/night; no hook-ups; maximum vehicle length 30 feet (9.1 m). First-come, first-served self-registration.

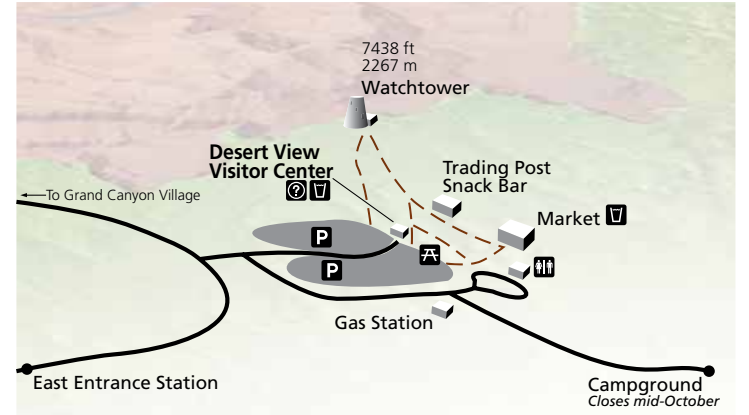
## Food and Beverage

**Desert View Snack Bar** Through October 19, 9 am–6 pm; beginning October 20, 9 am–5 pm; located in Desert View Trading Post

## Services

**Desert View Market** Through September 30, 9 am–6 pm; beginning October 1, 9 am–5 pm; closed Thanksgiving Day

**Gas Station** Open through October 23, 9 am to 5 pm; fuel available 24 hours a day with credit card



# Staying Safe at Grand Canyon



## Where Can I Find Free Water?

In an effort to reduce litter along park trails, plastics in the waste stream, and greenhouse gas emissions, and as part of a reusable water bottle program, *Grand Canyon National Park has eliminated the sale of water packaged in individual disposable containers—including plastic and glass bottles.*

Bring or buy a reusable water bottle and fill it up for free. You can purchase reusable, souvenir water bottles at park retailers and fill them at the following locations:

- Bright Angel Lodge
- Bright Angel Trailhead—under construction
- Canyon Village Market
- Desert View Market
- Desert View Visitor Center
- El Tovar Hotel
- Grand Canyon Visitor Center
- Hermits Rest
- Maswik Lodge
- South Kaibab Trailhead
- Verkamp's Visitor Center
- Yavapai Geology Museum
- Yavapai Lodge Cafeteria

## What Do I Need to Know About Weather and Elevation?

Autumn weather varies greatly and can change suddenly. Be prepared with layered clothing for heat, rain, wind or snow. Please slow down and drive carefully in inclement weather.

At 7,000 feet (2,135 m) elevation, you may feel short of breath, nauseous, or tire easily. Direct sun can cause dehydration and sunburn. Use sunblock and drink plenty of free Grand Canyon spring water.



## How Can I Keep Wildlife Wild?

Never approach or feed any animal; it is illegal to do so.

Deer and elk can be especially aggressive in fall and will defend their territory. Stay at least 100 feet (30 m), or about six car lengths, away from larger animals.

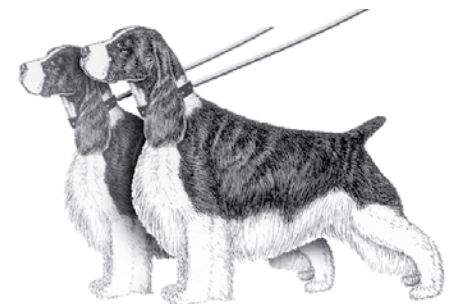
Do not feed the squirrels; they will bite and can carry plague. People can get plague from being bitten by an infected flea or by handling an infected animal.

It is tempting to want to get close to animals, but remember they are not pets. Wild animals need space and respect. Please do your part to keep the park's wildlife wild.



## How Can I View Grand Canyon Safely?

Stay at least 6 feet (2 m) from the edge and hold on to children. Always be aware of your surroundings. Do not back up without first looking where you are going. Never throw anything over the edge.



## Where Can I Take My Pet?

Leashed pets are allowed on rim trails in the South Rim developed area, but not below the rim, in buildings, or on shuttle buses. The only exception is service animals. Persons wishing to take a service animal below the rim must check in first at the Backcountry Information Center. See page 6 for kennel information.