



# The Guide: Autumn

## South Rim Information and Maps



Park visitors take in the canyon's grand view from Mather Point.



## Top Grand Canyon Activities

### Canyon Rim Activities

#### VIEW THE RIVER

The Colorado River, flowing 1,400 miles (2,250 km) from Colorado to the Gulf of California, carved Grand Canyon 5-6 million years ago. Visit Lipan Point on Desert View Drive for an amazing river view. In addition to plants, animals, and rocks, Grand Canyon National Park also protects natural quiet. Travel to Pima Point on Hermit Road to hear the rapids roaring far below you.

#### SEE SUNSET OR STARGAZE

Let changing light in the canyon inspire you as you stroll 0.3 miles (0.5 km) between Powell and Hopi points. Begin an hour before sunset for the best views. Visit Mather Point near Grand Canyon Visitor Center or Grandview Point on Desert View Drive to gaze at the millions of stars above. Grand Canyon National Park protects dark skies to limit the impact of light and air pollution on your view.

#### WALK THE TRAIL OF TIME

Stroll 1.3 miles (2.1 km) between Yavapai Geology Museum and Verkamp's Visitor Center along this award-winning trail. Use signs along the trail to learn geology and locate the rocks in the canyon walls. Touch samples from the different layers and look for fossils as you explore the trail. See page 3 for park ranger programs about geology.

#### LOOK FOR CONDORS

California condors symbolize what national parks embody: preservation of the earth's wonders. Their reintroduction motivates us to protect this important landscape for future generations. Look for condors near Bright Angel Lodge, Pipe Creek Vista, and along the Bright Angel and South Kaibab trails. Please stay 75 feet (23 m) away from these critically endangered birds.

### Inner-Canyon Activities

#### HIKE BRIGHT ANGEL TRAIL

Venture partway into the canyon. As you descend, climate and habitat change from mountain to desert conditions. Look for plants and animals from different life zones as you travel from pine trees to cactus through this outdoor biological museum. Follow the hiking safety information on page 7.

### Indoor Activities

#### EXPLORE HISTORY

Walk through the village historic district and discover the people and events that helped shape the development and protection of Grand Canyon. Be sure to visit the Bright Angel Lodge History Room and Verkamp's Visitor Center.

Travel to Desert View where you can tour Desert View Watchtower, a recreation of ancestral Puebloan towers in other Southwest locations. View paintings as you climb to the top for 360-degree views of Grand Canyon and the Painted Desert.

### Welcome to Grand Canyon National Park!

Most visitors experience Grand Canyon from viewpoints along the rim. From this expansive perspective, it is hard to see anything but a spectacular and ruggedly beautiful landscape.

Far below the rim, hundreds of miles of river corridor and backcountry trails allow the adventurous to experience a world without cell phones, computers, or even electricity. What do you think you might learn about yourself if you were to embark on such an adventure?

Many come to Grand Canyon with the intent of experiencing nature and themselves at their most basic level. They often say that in the slower pace, the aloneness, and the vastness, they find extraordinary beauty, inner peace, and sometimes, a part of themselves they never even knew existed. This, for many, is the value of wildness.

Wild lands and wild experiences are among the resources the National Park Service protects here. The park is in the process of developing a backcountry management plan for Grand Canyon; and your opinions and comments are important to us.

While you are here, consider experiencing some of Grand Canyon's wildness for yourself, but don't forget to seek the advice of the experienced rangers in the Backcountry Information Center before you go.

Once you return home, I hope you will watch for opportunities to participate in Grand Canyon's backcountry management planning process by providing the park with your observations, feedback, and suggestions. With your help, the National Park Service hopes to continue providing incredible backcountry experiences for decades to come.

Thank you,

David V. Ueberuaga

## Need Information?

Bring this Guide and your questions to a visitor center. Talk to park rangers, view exhibits, and learn about the park. Grand Canyon Association Park Stores and a stamp for your Passport To Your National Parks® are available at these facilities, except for the Backcountry Information Center. The stamp is also available at Indian Garden and Phantom Ranch.

### Grand Canyon Village

#### GRAND CANYON VISITOR CENTER

Plan your visit, see the park film *Grand Canyon: A Journey of Wonder*, and learn about Grand Canyon with the park's newest exhibits. Park Store, bicycle rental, food service, and canyon view from Mather Point nearby. 8 am–5 pm

#### BACKCOUNTRY INFORMATION CENTER

Obtain backcountry information and permits for overnight hikes. 8 am–noon; 1–5 pm

#### KOLB STUDIO

View rotating exhibits in the restored 1904 Kolb brothers' home and photography studio. 8 am–7 pm

#### VERKAMP'S VISITOR CENTER

Visit one of the oldest buildings in Grand Canyon Village and explore more than 100 years of community history. 8 am–7 pm

#### YAVAPAI GEOLOGY MUSEUM

Find answers to your geology questions with 3D maps and exhibits about the geologic story you see through the panoramic windows. 8 am–7 pm

### Desert View

#### DESERT VIEW VISITOR CENTER

Discover how Grand Canyon continues to inspire a variety of people. Document a Grand Canyon memory by writing or drawing in the visitor journal. 9 am–5 pm

#### TUSAYAN MUSEUM AND RUIN

See original artifacts, including split twig figurines and ancestral Puebloan pottery. Gain insight into local American Indians. Museum: 9 am–5 pm

**Elk and deer can be especially aggressive in fall and will defend their territory. Keep a safe distance of 100 feet (30 m) and help keep wildlife wild.**

### Table of Contents

Special Events .....	2
Park Ranger Programs .....	3
Maps and Shuttle Buses .....	4–5
Rim Hiking, Biking, Services.....	6
Canyon Day Hiking .....	7
Desert View, Safety .....	8



National Park Service  
U.S. Department of the Interior

### Grand Canyon National Park

Located in northern Arizona, the park encompasses 277 miles (446 km) of the Colorado River and adjacent uplands. One of the most spectacular examples of erosion anywhere in the world, Grand Canyon is unmatched in the incomparable vistas it offers to visitors on the rim. Grand Canyon National Park is a World Heritage Site.

#### Superintendent David V. Uberuaga

Grand Canyon National Park  
PO Box 129  
Grand Canyon, AZ 86023-0129 USA

#### Park Headquarters

928-638-7888

#### Website

[www.nps.gov/grca/](http://www.nps.gov/grca/)



*The Guide* is published by Grand Canyon National Park, supported by your user fees; it is available in French, German, Spanish, Italian, Japanese, Chinese, and Korean. An *Accessibility Guide* is also available.

The National Park Service cares for the special places saved by the American people so that all may experience our heritage.

**EXPERIENCE YOUR AMERICA™**

# Special Events and Opportunities

## Grand Canyon Music Festival

For tickets call 928-638-9215 or visit [www.grandcanyonmusicfest.org](http://www.grandcanyonmusicfest.org).

**September 6–7, 7:30 pm**

### Shrine of the Ages

The 30th Anniversary Season Finale features the string band ETHEL both nights.

**September 8, 4 pm**

### Community Building

Native American Composer Apprentice Project with ETHEL, the Catalyst Quartet, and composer Rave Chacon.

## 5th Annual Celebration of Art

**September 14–20, 2013**

This event provides the unique opportunity to see and purchase works of art from some of the best landscape painters in the country. Proceeds support the goal of funding a permanent art venue at the South Rim of Grand Canyon National Park. For complete artist information and event details, visit [www.grandcanyon.org](http://www.grandcanyon.org)

**September 14–20**

Plein Air at Grand Canyon—six artists will be painting along the rim

**September 20, 9 am to noon**

Quick draw event and auction

**September 21, 11 am–1 pm**

Grand opening reception and sale at Kolb Studio

**September 21, 2013 to January 20, 2014**

Art exhibit and sale at Kolb Studio



Grand Canyon Music Festival's 30th anniversary poster image by Ed Mell.

## National Public Lands Day

**September 28, 8 am–4 pm**

Volunteer with the park's vegetation program to keep Grand Canyon green. Snacks, equipment, campsites, and free entrance provided. Advance registration required: 928-638-7753

## Environmental Film Night

**September 28, 7:30 pm**

### Grand Canyon Visitor Center

Free screening of two environmental films: *Chasing Water* and *Chasing Ice*. These award-winning documentaries show the importance of Grand Canyon National Park's place in the world's changing climate and highlight environmental concerns.

## Grand Canyon After Dark

### THE SUN AND MOON

Date	Sunrise	Sunset
September 1	6:00 am	6:56 pm
September 15	6:11 am	6:35 pm
October 1	6:24 am	6:12 pm
October 15	6:36 am	5:52 pm
November 1	6:51 am	5:32 pm
November 15	7:05 am	5:21 pm
December 1	7:21 am	5:14 pm

### Full moon Date

Full moon Date	Rise time
September 19	6:33 pm
October 18	5:42 pm
November 17	5:39 pm

## Earth Science Week

**October 13–19**

INCLUDING

### National Fossil Day

**October 16**

Grand Canyon is an ideal place to celebrate Earth Science Week. A superlative geologic classroom, the park boasts one of the most scenic landscapes on earth. This year's theme, "Mapping Our World," promotes the exciting uses of maps and mapping technologies in the geosciences.



GRAND  
CANYON  
ASSOCIATION

INSPIRE. EDUCATE. PROTECT.

## Be a Part of Something Grand

*You can make a difference at Grand Canyon National Park!*

With your help, the Grand Canyon Association (GCA) supports an impressive variety of projects and programs that help ensure all visitors are able to enjoy the awe-inspiring wonder of Grand Canyon.

As the park's official nonprofit partner, GCA cooperates with the National Park Service to operate Park Stores in seven locations in the park. GCA Park Store purchases help fund new exhibits, scientific research, trail restoration, wildlife monitoring, ecological restoration, support for the arts, Junior Ranger and education programs, and historic building preservation.

### Discover the Park With the Grand Canyon Field Institute

From hiking and backpacking to yoga and photography, you can participate in education classes throughout the park. Call 866-471-4435 or visit [www.grandcanyon.org/fieldinstitute](http://www.grandcanyon.org/fieldinstitute)

### Take Grand Canyon Home With You

Join the Grand Canyon Association today. Members receive exclusive benefits and discounts. For information, visit a GCA bookstore, call toll-free 800-858-2808, or visit [www.grandcanyon.org](http://www.grandcanyon.org).

## HawkWatch International

**Through November 5, 10 am–4 pm**

### Yaki Point

Join representatives of HawkWatch International as they record the fall hawk migration each day. Learn to identify migratory hawks, falcons, and eagles and help count these raptors as they fly by. Take the Kaibab/Rim Route shuttle bus to Yaki Point and walk a short distance to the left (southwest) along the rim.

## Artist-in-Residence

Few places have inspired as much wonder and creativity as Grand Canyon. Grand Canyon National Park hosts two Artist-in-Residence programs—a seasonal program on the North Rim and a year-round program on the South Rim. Ask in visitor centers about times and locations for a limited number of free, family-friendly programs with the artists or call 928-638-7616 for recorded information. For additional program information and artist opportunities visit [www.nps.gov/grca/supportyourpark/air.htm](http://www.nps.gov/grca/supportyourpark/air.htm)

### SOUTH RIM AUTUMN SCHEDULE

#### September

Stone carvers Susan Zalkind and Paul Hawkins from Camp Verde, Arizona  
[www.alabaster.net](http://www.alabaster.net)

#### October

Photographer Kathleen Brennan from Taos, New Mexico  
[www.brennanstudio.com](http://www.brennanstudio.com)

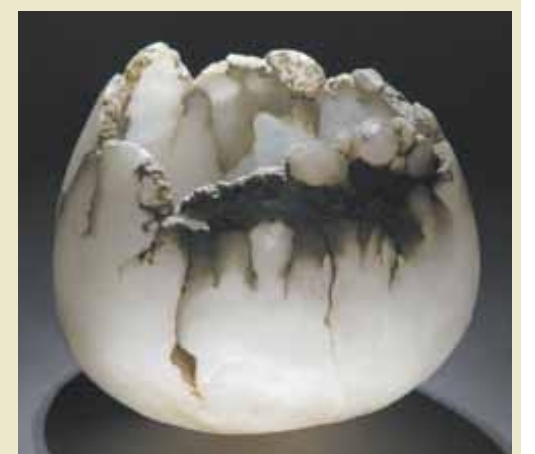
#### November

Writer/poet/performer Elmaz Abinader from Oakland, California  
[www.elmazabinader.com](http://www.elmazabinader.com)

## Virtual Caching

Grand Canyon National Park introduces a Virtual Cache program that allows a new way to explore the park.

The first series of caches will be EarthCaches, which are specifically tailored towards geology, educational experiences, modern technology, and outdoor adventures. Stop by Grand Canyon Visitor Center or visit [www.nps.gov/grca/playourvisit/virtual-caching.htm](http://www.nps.gov/grca/playourvisit/virtual-caching.htm) to get your EarthCache information and start your adventure today. You will need your own GPS-enabled device to participate.



*Medium Alabaster Bowl* by Susan Zalkind and Paul Hawkins; artist quarried and carved American alabaster; 12" x 12" x 10"; 2012.

**Check at visitor centers and hotels for additional information and special programs.**

# Park Ranger Programs

Discover Grand Canyon with free programs given by park rangers and volunteers in or near Grand Canyon Village; see page 8 for Desert View programs. Parking is limited. Park rangers recommend you ride the free shuttle buses to program locations.

Outdoor programs may be cancelled during inclement weather. Children under age 16 must be accompanied by an adult. All program times are Mountain Standard; Arizona does not recognize daylight-saving time.

Time	Programs	Meeting Location	Duration	Notes
10 am	<b>Geo-glimpse</b> Learn how Grand Canyon formed while exploring Yavapai Geology Museum during this short introductory talk. Consider walking the Trail of Time following the program.	Yavapai Geology Museum	30 minutes	Perfect for Junior Rangers. Ride the free Kaibab/Rim Route shuttle bus. Accessible.
10:30 am	<b>Ranger on the Rim: Climate Change and Fire Ecology</b> Stop by anytime between 10:30 am and 12:30 pm to learn about park science and current research.	Pipe Creek Vista	Park ranger present for two hours	Program only offered Sept 3 to Oct 5. Parking is limited; ride the free Kaibab/Rim Route shuttle bus. Accessible.
10:45 am	<b>Raptors in Flight</b> Thousands of raptors migrate over Grand Canyon every fall. Learn about their journeys and enjoy their beauty with representatives from HawkWatch International.	Yaki Point	30 Minutes	Friday, Saturday, Sunday, and Monday only. Last program Nov 4. No access for private vehicles; ride the free Kaibab/Rim Route shuttle bus.
11:00 am	<b>Fossil Walk</b> Explore a 270-million-year-old fossil bed to discover what it can tell us about this part of the continent before the age of the dinosaurs on this 0.5-mile (0.8 km), one-way walk along the rim.	Bright Angel Lodge (rim-side patio)	60 minutes	No program Oct 7–11. Parking is limited; ride the free Village Route shuttle bus.
1:30 pm	<b>History Walk</b> Hear stories of people's enduring relationship with the canyon over thousands of years as you stroll through the village historic district.	Verkamp's Visitor Center	45 minutes	No program Oct 7–11. Perfect for train passengers. Parking is limited; ride the free Village Route shuttle bus. Accessible.
2:30 pm	<b>Raptors in Flight</b> Thousands of raptors migrate over Grand Canyon every fall. Learn about their journeys and enjoy their beauty with representatives from HawkWatch International.	Yaki Point	30 Minutes	Friday, Saturday, Sunday, and Monday only. Last program Nov 4. No access for private vehicles; ride the free Kaibab/Rim Route shuttle bus.
2:30 pm	<b>Geology Walk</b> Discover the amazing story of one of the greatest geologic features on Earth. Why is Grand Canyon so deep, wide, and grand? Why does it exist only here and nowhere else in the world?	Yavapai Geology Museum	60 minutes	No program Oct 7–11. Ride the free Kaibab/Rim Route shuttle bus. Accessible.
3 pm	<b>Condor Talk</b> Learn about the majestic and endangered California condor and its reintroduction to northern Arizona.	Hopi Point (parking lot)	45 minutes	No program Oct 7–11. No access for private vehicles; ride the free Hermits Rest Route shuttle bus. Accessible.
3:45 pm	<b>Ranger on the Rim: California Condor</b> Stop by anytime between 3:45 pm and 5 pm to learn about park science and current research.	Hopi Point	Park ranger present for 75 minutes	No program Oct 7–11. No access for private vehicles; ride the free Hermits Rest Route shuttle bus. Accessible.
5 pm Sept 3–Oct 5 4:30 pm Oct 6–Nov 2	<b>Elk Talk</b> Discover the secrets behind elk survival, understand their behavior, and learn about the park's management concerns.	El Tovar Hotel (rim-side lawn)	30 minutes	Parking is limited; ride the free Village Route shuttle bus. Accessible.
7:30 pm	<b>Evening Program</b> Relax in a beautiful auditorium and enjoy a presentation about Grand Canyon's fascinating natural or cultural history. Check visitor centers for topics.	McKee Amphitheater Sept 3–7 Shrine of the Ages Sept 8 to Nov 30	60 minutes	No program Oct 8–10. Ride the free Village Route shuttle bus. Trails to the amphitheater are paved; short sections exceed 5% grade. Shrine of the Ages is accessible.

## Special Programs

As staffing allows and weather permits, park rangers may offer additional programs and walks. Check visitor centers for times and locations of potential full/new moon walks, star talks, and graveyard tours.

## Inside the Canyon

Going to Phantom Ranch or Indian Garden? Join a park ranger to discover the many wonders of the inner canyon. Programs vary and cover a wide range of natural and cultural history topics. *Offered down inside Grand Canyon, these programs are only accessible by a long strenuous hike or mule ride. A backcountry permit or Phantom Ranch reservation is required to spend the night inside Grand Canyon.*

### Indian Garden

Times vary

Friday to Monday

Check bulletin boards for program topics, locations, and times. Wilderness Explorer Junior Ranger booklet available. Accessible only by hiking 4.5 miles (7.2 km) down Bright Angel Trail.

### Phantom Ranch

4 pm and 7:30 pm

Daily

Check bulletin boards for program locations and topics. Phantom Ranch Junior Ranger activity booklet available. Accessible only by hiking or a mule ride to the bottom of Grand Canyon.

## Discover the Canyon by Phone

Enjoy two-minute interpretive park ranger talks at 30 locations throughout the park. Wherever you see a cell phone tour sign, dial 928-225-2907 and enter the stop number. There is no additional charge; standard calling rates apply. Funded by the Grand Canyon Association.



## Fun for Kids: Junior Rangers

Children ages four and older can pick up a free Junior Ranger booklet from any visitor center. Have fun learning about Grand canyon by completing at least four activities and attending a park ranger program. Turn in the completed booklet at any visitor center and earn a badge and certificate. Special patches are also available for purchase at Grand Canyon Association Park Stores.



Unique Junior Ranger programs are also available on the North Rim (May to October) and at more than 250 national parks, seashores, and monuments nationwide. The Junior Ranger program is generously supported by the Grand Canyon Association.

## For Your Next Visit

LEARN IN AN OUTDOOR CLASSROOM

Teachers: **Field Trips, Workshops, and Distance Learning** 928-638-7931 or [www.nps.gov/grca/forteachers/](http://www.nps.gov/grca/forteachers/)

Expeditions for Teens

[www.nps.gov/grca/forkids/camp.htm](http://www.nps.gov/grca/forkids/camp.htm)

RELAX ON THE NORTH RIM

The far reaches of the North Rim provide visitors with a tranquil experience. Open mid-May through the end of October, the North Rim is a five-hour, 215-mile (346 km) drive from Grand Canyon Village. Accommodations fill in advance; reservations strongly recommended.

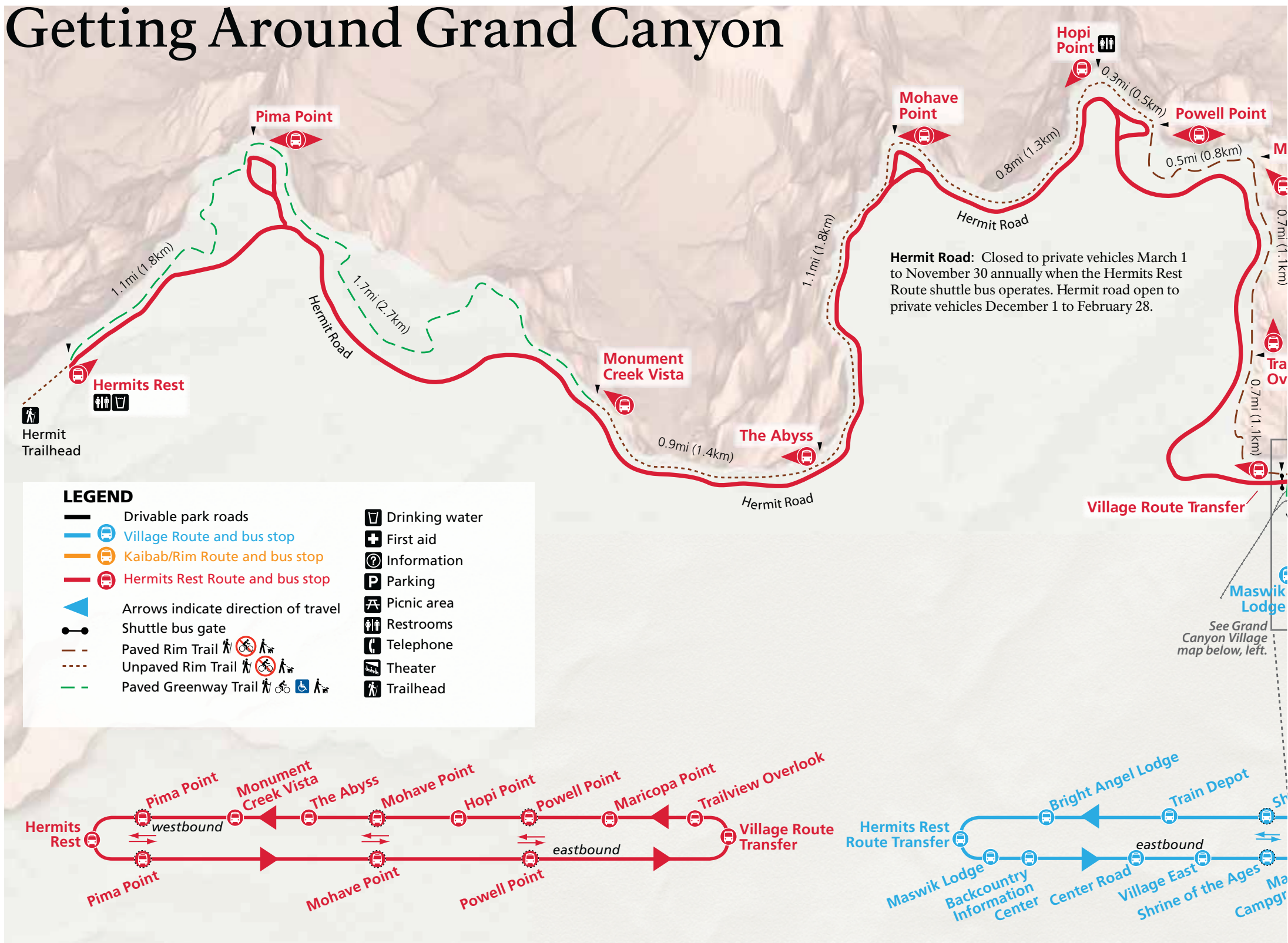
Grand Canyon Lodge

877-386-4383 or [www.foreverresorts.com](http://www.foreverresorts.com)

North Rim Campground

877-444-6777 or [www.recreation.gov](http://www.recreation.gov)

# Getting Around Grand Canyon



## Ride the Free Shuttle Buses

Reducing air pollution and taking nearly a half-million vehicles off park roads each year, shuttle buses offer a hassle-free transportation option.

### HERMITS REST ROUTE— RED ON MAP ABOVE

- 80 minutes round-trip
- Nine overlooks
- Toilets at Hopi Point
- Water, snack bar, toilets, and gift shop at Hermits Rest
- Buses run:
  - 5 am, 5:15 am, 5:45 am, 6:15 am, 6:30 am
  - Every 15 minutes 6:30 am to sunset
  - Visitors should be at a bus stop no later than 30 minutes after sunset.

### VILLAGE ROUTE— BLUE ON MAP ABOVE

- 50 minutes round-trip
- Grand Canyon Visitor Center, hotels, restaurants, campgrounds
- Scenic canyon views are a short walk from some stops
- Buses run every:
  - 30 minutes 5–6:30 am
  - 15 minutes 6:30 am–7:30 pm
  - 30 minutes 7:30–10 pm; visitors should be at a bus stop by 9:30 pm

### KAIBAB/RIM ROUTE— ORANGE ON MAP ABOVE

- 50 minutes round-trip
- Five viewpoints
- Grand Canyon Visitor Center and Yavapai Geology Museum
- Access to South Kaibab Trailhead
- Buses run every:
  - 30 minutes 5–6:30 am
  - 15 minutes 6:30 am to one hour after sunset
  - Visitors should be at a bus stop no later than 30 minutes after sunset.

### HIKERS' EXPRESS NOT SHOWN ON MAP ABOVE

- Service to South Kaibab Trailhead
- Bus travels from Bright Angel Lodge to Backcountry Information Center, Grand Canyon Visitor Center, and South Kaibab Trailhead.
- Allow 5–10 minutes between stops.

Bus leaves Bright Angel Lodge:

- 5 am, 6 am, 7 am in September
- 6 am, 7 am, 8 am in October
- 7 am, 8 am, 9 am in November

**Note:** September 3–6, shuttle buses will begin one hour earlier. The Village Route shuttle bus will run until 11 pm; visitors should be at a bus stop by 10:30 pm.

## Shuttle Bus FAQ

**Are the shuttle buses free?**

Yes, park entrance fees include shuttle bus transportation.

**How do the shuttle buses work?**

Running like a city bus system, three shuttle bus routes stop at shops, visitor centers, and popular viewpoints around the South Rim. Just wait at any bus stop and enjoy the ride. *Note: During the busy part of the day, buses fill quickly, and you may have to wait for one or two shuttle buses to board.*

**Will my wheelchair fit on the bus?**

Buses are equipped with ramps to accommodate passengers in wheelchairs smaller than 30 inches wide by 48 inches long (76 by 122 cm). Most motorized scooters will not fit on buses.

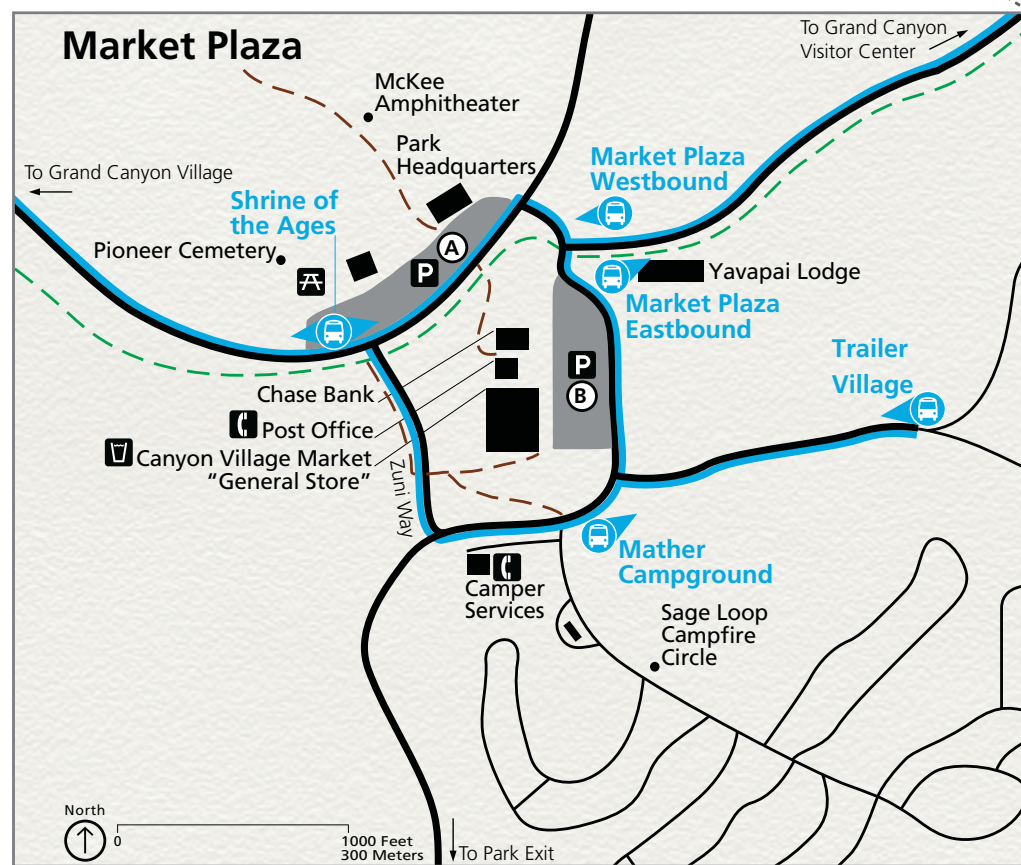
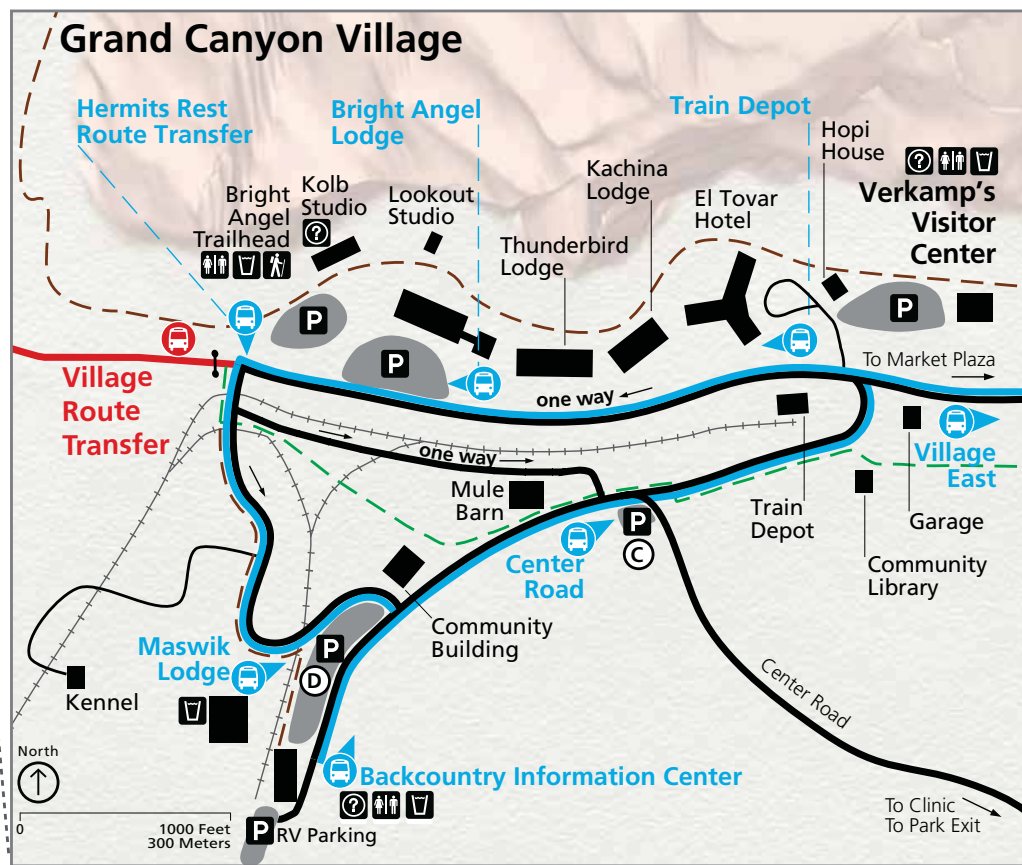
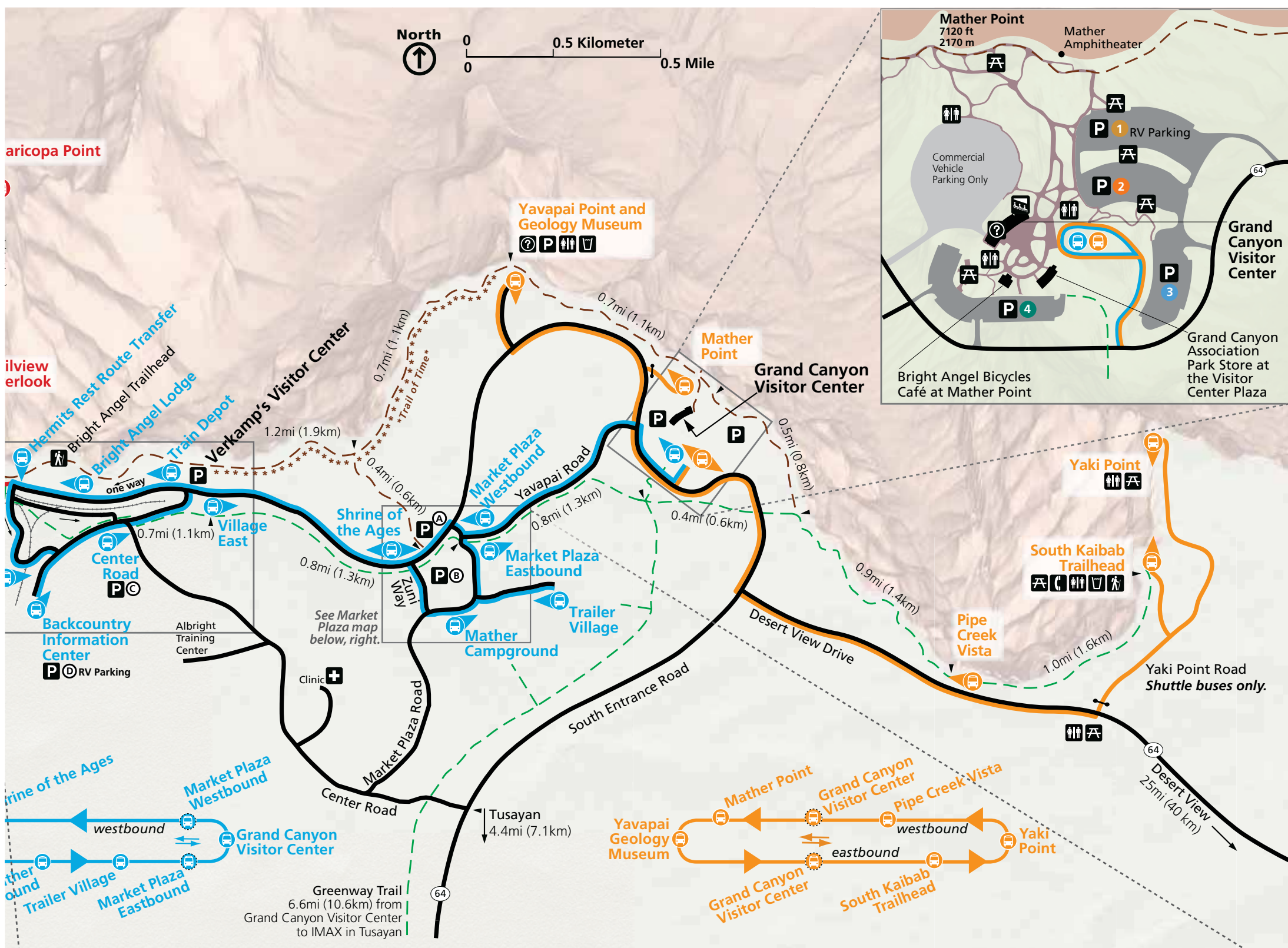
**How can I tell the difference between shuttle bus routes?**

All National Park Service shuttle buses are white and green, but the front of the bus will say the route color and name.

**What are the shuttle bus rules?**

- No eating or open drink containers.
- No pets. Service animals permitted.
- Collapse strollers before entering the bus. No oversized or jogging strollers. Remove baby-back carriers when seated.
- Shuttle buses can accommodate two or three bicycles, but not tag alongs, baby trailers, or children's bicycles with wheels less than 16 inches (41 cm). Riders must load and unload their bicycles.
- Shuttle buses only stop at designated bus stops.





### Driving and Parking FAQ

#### Where can I drive my car?

You can drive anywhere there is a solid black line on the maps in this Guide. Hermit Road and Yaki Point Road are closed to private vehicles; ride the free shuttle bus to access.

#### Where is the best place to see views of the canyon using my car?

Consider driving Desert View Drive, a 25-mile (40 km) road with many viewpoints. Don't forget to stop at Desert View Watchtower; see page 8 for information.

#### Where can I park?

All parking lots in Grand Canyon Village are located near free shuttle bus stops.

- **Parking lots 1–4** Grand Canyon Visitor Center. Lot 1 includes auto, RV, and trailer parking.
- **Parking Lot A** Park Headquarters
- **Parking Lot B** Market Plaza
- **Parking Lot C** near Center Road in Grand Canyon Village
- **Parking Lot D** Backcountry Information Center. Lot D includes auto parking in the north end and RV and trailer parking in the south end.

#### What else do I need to know about driving?

Do not stop or park along the roadside, except where signs or lines on the road indicate it is permissible. Use pull-outs and overlooks to take pictures and view wildlife. Please do not block other people's enjoyment of the park by stopping in the road or blocking traffic.

The Scenic Drive Accessibility Permit allows visitors with mobility issues entry to some areas closed to public traffic. This permit is available at entrance gates, visitor centers, and hotel lobbies.



# Rim Hiking

## Stroll the Rim Trail

The Rim Trail offers a diverse hiking experience along 13 miles (21 km) of the canyon, shown by brown and green dashed lines on the map on pages 4–5. From a short 30-minute sunrise walk to a full afternoon hike, choose your adventure. The Rim Trail is wheelchair accessible from Lookout Studio to South Kaibab Trailhead. Distances are one way.

Difficulty	Start	Finish	Distance	Attraction
<b>Easy, popular</b> Wide, paved trail; accessible by strollers and wheelchairs with assistance	Mather Point	Yavapai Point	0.7 miles (1.1 km)	View the Colorado River and Phantom Ranch
	Yavapai Geology Museum	Verkamp's Visitor Center	1.3 miles (2.1 km)	See and touch canyon rocks along the award-winning Trail of Time
	Verkamp's Visitor Center	Kolb Studio	0.6 miles (1 km)	Explore local history in the village historic district
<b>Easy, Less Traveled</b> Little elevation gain	South Kaibab Trailhead	Mather Point	2.1 miles (3.4 km)	Great views of an inner-canyon trail; paved
	Monument Creek Vista	Hermits Rest	2.8 mile (4.5 km)	Quiet and uncrowded with forest and canyon views; paved
	Hopi Point	Powell Point	0.3 miles (0.5 km)	Expansive east and west views of the canyon; unpaved
<b>Moderate</b> Some elevation gain and/or rough terrain	Mohave Point	Monument Creek	2.0 miles (3.2 km)	Unpaved trail with great views
	Hermits Rest Route Transfer	Trailview Overlook	0.7 miles (1.1 km)	Overlooks Grand Canyon Village and Bright Angel Trail; paved, steep grade

# Biking Explorations

## Pedal the Greenway Trail

Bicycle along the canyon rim and through peaceful forest scenery by following the green dashed lines on the map on pages 4–5. Bicycles are only permitted on the Greenway Trail, paved roads, and dirt roads open to the public. Bicycles are prohibited on the Rim Trail and trails down in to Grand Canyon.

On Hermit and Yaki Point roads, bicyclists must pull to the right shoulder and dismount when buses pass. Obey all traffic regulations, ride single file with the flow of traffic, and wear bright colors and a helmet.



# South Rim Services and Facilities

Locations shown on the maps on pages 4–5.

## Food and Beverage

**BRIGHT ANGEL BICYCLES NEAR GRAND CANYON VISITOR CENTER**

**Café at Mather Point** Sept 3 to Oct 31, 6 am–8 pm; Nov 1–30, 7 am–6 pm

## BRIGHT ANGEL LODGE

**The Arizona Room** Lunch Sept 3 to Oct 30, 11:30 am–3 pm; Oct 31 to Nov 30 no lunch service; dinner 4:30–10 pm, reservations not accepted; lounge 4:30–10 pm

**Bright Angel Coffee House** 6–10 am

**Bright Angel Fountain** Sept 3–30, 10 am–7 pm; Oct 1 to Nov 30, 11 am–5 pm, weather permitting

**Bright Angel Restaurant** Breakfast Sept 3–30, 6–10:45 am and Oct 1 to Nov 30, 6:30 am–10:45 am; lunch 11:15 am–4 pm; dinner 4:30–10 pm; lounge 11 am–11 pm

## CANYON VILLAGE MARKET

**Canyon Village Deli** Sept 3 to Oct 27, 8 am–7 pm; Oct 28 to Nov 30, 8 am–6 pm

## EL TOVAR HOTEL

**El Tovar Dining Room** Breakfast 6:30 am–10:45 am; lunch 11:15 am–2 pm; dinner Sept 3–30, 4:30–10 pm and Oct 1 to Nov 30, 5 pm–10 pm; dinner reservations required 928-638-2631, ext. 6432; lounge 11 am–11 pm

## HERMITS REST

**Hermits Rest Snack Bar** 9 am to 5 pm

## MASWIK LODGE

**Maswik Cafeteria** 6 am–10 pm  
**Maswik Pizza Pub** 11 am–11 pm

## YAVAPAI LODGE

**Yavapai Cafeteria** Sept 3–30, 6 am–9 pm; Oct 1 to Nov 2, 6:30 am–8 pm; Nov 3–19 closed; Nov 20–30, 6:30 am–8 pm

## Books and Gifts

**Bright Angel Lodge** 7 am–10 pm

**El Tovar Hotel** 7 am–10 pm

**Grand Canyon Association Park Stores**

at **Kolb Studio** 8 am–7 pm

at **Verkamp's Visitor Center** 8 am–7 pm

at **Visitor Center Plaza** 8 am–7 pm

at **Yavapai Geology Museum** 8 am–7 pm

**Hermits Rest Gift Shop** 9 am–5 pm

**Hopi House** Sept 3 to Oct 16, 9 am–6 pm;

Oct 17 to Nov 30, 9 am–5 pm

**Lookout Studio** 9 am–5 pm

**Maswik Lodge** 7 am–10 pm

**Yavapai Lodge Curio** Sept 3 to Oct 16,

8 am–8 pm; Oct 17 to Nov 30, 9 am–5 pm

## Lodging

**Bright Angel Lodge** \$94–362

**El Tovar Hotel** \$183–440

**Kachina Lodge** \$180–191

**Maswik Lodge** \$92–176

**Thunderbird Lodge** \$180–191

**Yavapai Lodge** \$125–166

Same-day reservations: 928-638-2631

Advance reservations: 888-297-2757

www.grandcanyonlodges.com

**Phantom Ranch** Dormitory and cabin space located at the bottom of the canyon. Reservations required: 888-297-2757

## Services

**ATM** Chase Bank and Maswik Lodge

**Canyon Village Market** "General Store" Groceries, hiking supplies, and gifts. Sept 3–29, 8 am–9 pm; Sept 30 to Oct 27, 8 am–8 pm; Oct 28 to Nov 30, 8 am–7 pm

**Chase Bank** Monday to Thursday 9 am–5 pm; Friday 9 am–6 pm. 928-638-2437

**Garage** Emergency repairs and tow service. 8 am to noon and 1–5 pm. 928-638-2631

**Kaibab Learning Center** Day care for one to 12 year olds; immunization records required. Monday to Friday, 7:30 am–5:30 pm. 928-638-6333

**Kennel** Dogs and cats need proof of inoculations. 7:30 am–5 pm, 928-638-0534 For retrieval after 5 pm: 928-638-2631

**Lost and Found** 928-638-7798, 928-638-2631

**Post Office** Monday to Friday 9 am–4:30 pm; Saturday 11 am–1 pm; closed Sunday and federal holidays. 928-638-2512

**Religious Services** See schedules at Mather Campground, Shrine of the Ages, Grand Canyon Post Office, Grand Canyon Visitor Center, and Park Headquarters

**Taxi** 928-638-2822

## WiFi and Public Computer Access

**Park Headquarters:** Free WiFi available 8 am–5 pm, every day. Computers with internet access available 8 am–4:30 pm, Monday to Friday, except federal holidays.

**Community Library:** Free WiFi and computers available, 10:30 am–5 pm, Monday to Saturday.

**Hotel Lobbies:** WiFi available 24 hours a day; fees may be charged.

## Camping

**Mather Campground (NPS)** \$18 per night family site; \$50 per night group site; \$25 per night horse site. No hook-ups; dump station nearby. Maximum vehicle length 30 feet (9.1 m). Reservations: 877-444-6777 or www.recreation.gov

## Trailer Village (Xanterra Parks & Resorts)

\$35 per night for two people; \$3.50 for each additional person over age 16. Pull-through sites with hook-ups; dump station nearby. Same-day reservations: 928-638-2631. Advance reservations: 888-297-2757 or www.grandcanyonlodges.com

## Laundry and Showers at Camper Services

Sept 3–12, 6 am–11 pm, last laundry load 9:45 pm; Sept 13 to Oct 24, 7 am–9 pm, last laundry load 7:45 pm; Oct 25 to Nov 30, 8 am–6 pm, last laundry load 4:45 pm

# Tusayan, Arizona

Located seven miles (11 km) south of Grand Canyon Visitor Center on Highway 64.

## Lodging

**Best Western Premier Grand Canyon**

**Squire Inn** 928-638-2681

**Canyon Plaza Resort** 928-638-2673; pets ok

**Grand Hotel** 928-638-3333

**Holiday Inn Express** 928-638-3000

**Red Feather Lodge** 928-638-2414; pets ok

**7 Mile Lodge** 928-638-2291

## Camping

**Camper Village (Private)** Hook-ups, coin-operated showers, laundry, propane, dump station, and store. 928-638-2887 or www.grandcanyoncampervillage.com

## Ten-X Campground (Kaibab National Forest)

Last night of camping September 30; closes Oct 1 at noon. \$10 per vehicle per night; no hookups or showers. Most sites first-come, first-served. Reserve some individual and all group sites: 877-444-6777 or www.recreation.gov

## Additional Resources

**Arizona Highway Information** Dial 511 or 888-411-ROAD; www.az511.gov

## Grand Canyon Chamber of Commerce

888-472-2696, www.grandcanyonchamber.com

**Kaibab National Forest** Tusayan Ranger District ranger station, 8 am–4:30 pm, Monday to Friday. 928-638-2443

## Tours and Trips

**Bright Angel Bicycles** Bicycle rentals and guided tours; located near parking lot 4 at Grand Canyon Visitor Center. Sept 3 to Oct 14, 8 am–6 pm; Oct 15 to Nov 30, 10 am–4 pm. 928-638-3055 or www.bikegrandcanyon.com

**Xanterra Tours: Bus Tours** Departs daily to Desert View Watchtower and Hermits Rest for sunrise and sunset. Reserve at El Tovar Hotel concierge desk; transportation desk in Bright Angel, Maswik or Yavapai lodges; 928-638-2631 or www.grandcanyonlodges.com

**Xanterra Tours: Mule Trips** Overnight trips to Phantom Ranch depart daily. A three-hour mule ride through the forest to the canyon rim departs twice daily through Oct 31 and once daily beginning Nov 1. Inquire at Bright Angel Lodge transportation desk or call 928-638-2631.

## Paid Activities

Fixed-wing and helicopter tours.

**Grand Canyon Airlines** 800-528-2413

**Grand Canyon Helicopters** 800-541-4537

**Maverick Airlines** 800-218-9932

**Maverick Helicopters** 800-962-3869

**Papillon Grand Canyon Helicopters**

800-528-2418

**Vision Airlines** 800-256-8767

**Westwind Aviation** 888-869-0866

## Grand Canyon Apache Stables

Horseback riding reservations: 928-638-2891

**IMAX Theater** Open 8 am–10 pm. Movie shown every hour on the half hour. First show 8:30 am, last show 8:30 pm. Food and gifts available. 928-638-4629

## River Rafting

### SMOOTH-WATER RAFT TRIPS

#### OUTSIDE PARK

#### Colorado River Discovery

888-522-6644 or www.raftthecanyon.com

### WHITEWATER RAFT TRIPS

#### IN PARK

See www.nps.gov/grca/playyourvisit/whitewater-rafting.htm for information about reserving multi-day whitewater raft trips.

# Day Hiking Below the Rim

Day hiking into the canyon affords an unparalleled experience. For an enjoyable hike you must prepare for extreme conditions. Gauge your fitness level, be honest about your health, and don't compare yourself to five or 10 years ago. Know your limits and average walking distance and time—Grand Canyon is an extreme environment!

Consider purchasing a trail guide at Park Stores before venturing down the trail. Park rangers like to say "going down is optional, but coming up is mandatory." Remember it takes twice as long to hike up as it does to hike down. For additional information about day and overnight hiking, visit: [www.nps.gov/grca/planyourvisit/backcountry.htm](http://www.nps.gov/grca/planyourvisit/backcountry.htm).

## Backcountry Camping Permits

If you wish to camp anywhere in the park, other than in a developed campground on the South Rim, North Rim, or Tuweep, you must obtain a permit from the Backcountry Information Center. A limited number of last minute walk-up permits available.

## Hike Smart

Knowledge, being prepared, and a good plan are all keys to success. Grand Canyon is not the place for spontaneity. *Stay together, follow your plan, and know where and how to seek help.*

Trail	Difficulty	Destination	Distance Round-Trip	Elevation Change One Way	Time Round-Trip	Facilities
<b>Bright Angel Trail:</b> Follow the Bright Angel Fault down Garden Creek Canyon on a well-maintained trail. Plan to park at Grand Canyon Visitor Center and ride the Village Route shuttle bus to the Hermits Rest Route Transfer stop or park at the Backcountry Information Center and walk to the trailhead. Water available at trailhead; water occasionally not available at Indian Garden and seasonal locations due to pipeline breaks—check before descending. Seasonal water is usually turned off in October. Always bring a method to treat water.	easy	1st Tunnel	0.4 miles (0.6 km)	60 feet (20 m)	20 minutes	none
	moderate	2nd Tunnel	1.7 miles (2.8 km)	590 feet (180 m)	1–2 hours	none
	moderate	1½-Mile Resthouse	3 miles (4.8 km)	1,120 feet (340 m)	2–4 hours	toilets, seasonal water, emergency phone
	difficult	3-Mile Resthouse	6 miles (9.6 km)	2,120 feet (645 m)	4–6 hours	toilets, seasonal water, emergency phone
	very difficult	Indian Garden	9 miles (14.4 km)	3,040 feet (925 m)	6–9 hours	water, toilets, ranger station, camping, emergency phone
<b>South Kaibab Trail:</b> Follow an exposed ridge line on a well-maintained trail for the best views for a relatively short hike. Ride the Kaibab/Rim Route or Hikers' Express shuttle bus to the South Kaibab Trailhead. Water, toilets, and pay phone located at trailhead.	moderate	Ooh Aah Point	1.8 miles (2.9 km)	760 feet (230 m)	1–2 hours	none
	difficult	Cedar Ridge	3 miles (4.8 km)	1,120 feet (340 m)	2–4 hours	toilets
	very difficult	Skeleton Point	6 miles (9.6 km)	2,040 feet (620 m)	4–6 hours	none
	<b>Hermit Trail and Dripping Spring Trail:</b> Gives intimate views of a long side canyon; rough and unmaintained—for experienced hikers. Begins west of Hermits Rest; water and toilets available at Hermits Rest.	difficult	Hermit Basin	2.8 mi (4.5 km)	1,240 feet (380 m)	2–4 hours
very difficult		Santa Maria Spring	5 miles (8 km)	1,680 feet (510 m)	4–6 hours	treat water
very difficult		Dripping Spring	7 miles (11.3 km)	1,040 feet (315 m)	5–7 hours	treat water

## Prepare a Day Pack With:

**Water** One quart/liter for every two hours, or drink to thirst. Know your water sources.



**Food** Bring salty snacks and a full meal. Eat often, even if you are not hungry. Snack every time you drink water or energy drinks.

**First Aid Kit and Survival Tools** Also include medications, blister care, and duct tape.

**Map** Many trails are well marked, but some are not. Know your route.

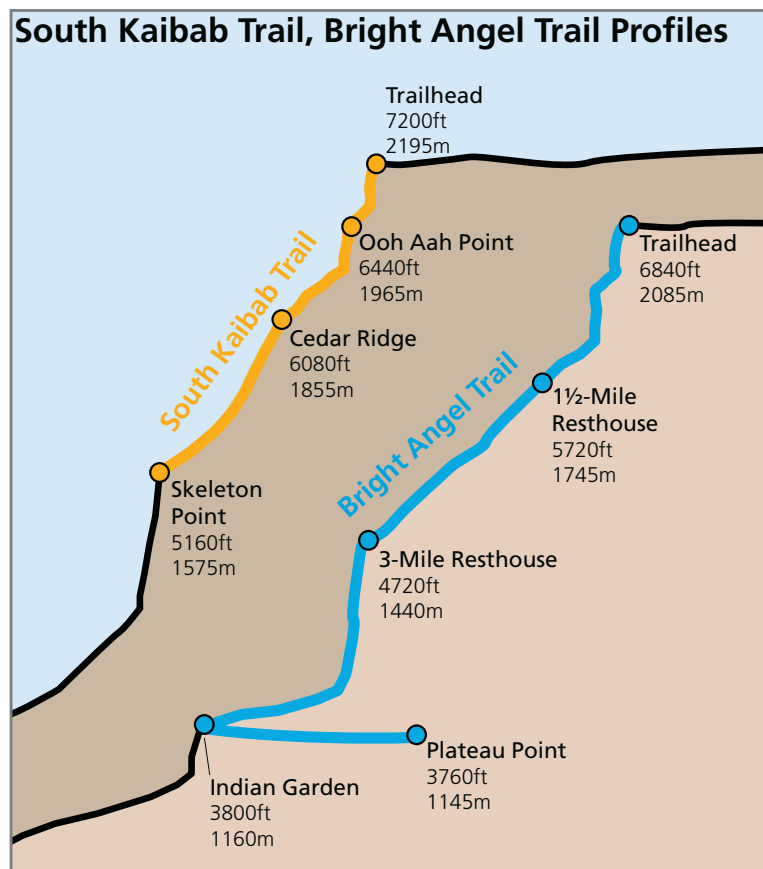
**Flashlight or Headlamp** You may end up hiking in the dark unexpectedly; cell phones do not provide adequate light.

**Sun Protection** Sunscreen, hat, sunglasses, and a sun umbrella.

**Communication** Whistle or signal mirror; while cell phones are not reliable, they may be helpful.

**Simple Shelters** Emergency tarp with reflective side.

**Weather-appropriate Clothing and Footwear** Layer for the weather and wear hiking boots with good soles, a hat, and sunglasses. Remember that the weather can change suddenly during autumn.



## Health Risks

**Common Challenges** Grand Canyon's climate and elevation can intensify all health issues, including minor colds, making hiking more difficult.

**Hyponatremia** Results from low sodium in the blood from drinking too much water, not eating enough salty food, and losing salt through sweating. Symptoms include nausea, vomiting, altered mental status, and frequent urination. Have the patient rest in the shade and eat salty foods. If the person's mental alertness decreases seek immediate help.

**Over Exertion** People often have overly ambitious plans and fail to pace themselves. Sit down, prop your legs up, and take a 5- to 10-minute break at least once every hour. If you are not feeling well, rest for at least 30 minutes.

**Heat Illness** Heat exhaustion can rapidly progress into heat stroke which may result in death. Avoid heat illnesses by taking preventative measures: drink water and sports drinks, eat plenty of salty foods, rest often, seek shade, and keep clothing wet. If a person becomes mentally altered, seek immediate help and cool the patient.

## Danger!

**Do Not Day Hike to the Colorado River** *Hiking to the river and back in one day is not recommended* due to long distances, extreme temperature changes, and a near 5,000-foot (1,500 m) elevation change each way.

**Do Not Swim in the Colorado River** Diving and swimming in the Colorado River have caused numerous deaths. River currents are fast and the water is a dangerously cold 46°F (8°C).

# Desert View



## Park Ranger Program

**Tusayan Ruin Tour**  
1:30 pm daily  
**Tusayan Museum**  
Located 3 miles (4.8 km) west of Desert View.

Discover how ancestral Puebloans found food and water and created homes in this environment.

Allow 30 minutes. Accessible.

See page 3 for park ranger programs in Grand Canyon Village.

## Books and Gifts

**Desert View Trading Post**  
Sept 3 to Oct 16, 9 am–6 pm; Oct 17 to Nov 30, 9 am–5 pm

**Desert View Watchtower**  
Sept 3 to Oct 16, 9 am–6 pm; Oct 17 to Nov 30, 9 am–5 pm

**Desert View Watchtower Stairs**  
Sept 3 to Oct 16, 9 am–5:30 pm; Oct 17 to Nov 30, 9 am–4:30 pm

**Grand Canyon Association Park Stores**  
at **Desert View Visitor Center** 9 am–5 pm  
at **Tusayan Museum and Ruin** 9 am–5 pm

## Food and Beverage

**Desert View Snack Bar**  
Sept 3 to Oct 16, 9 am–6 pm; Oct 17 to Nov 30, 9 am–5 pm; located in Desert View Trading Post



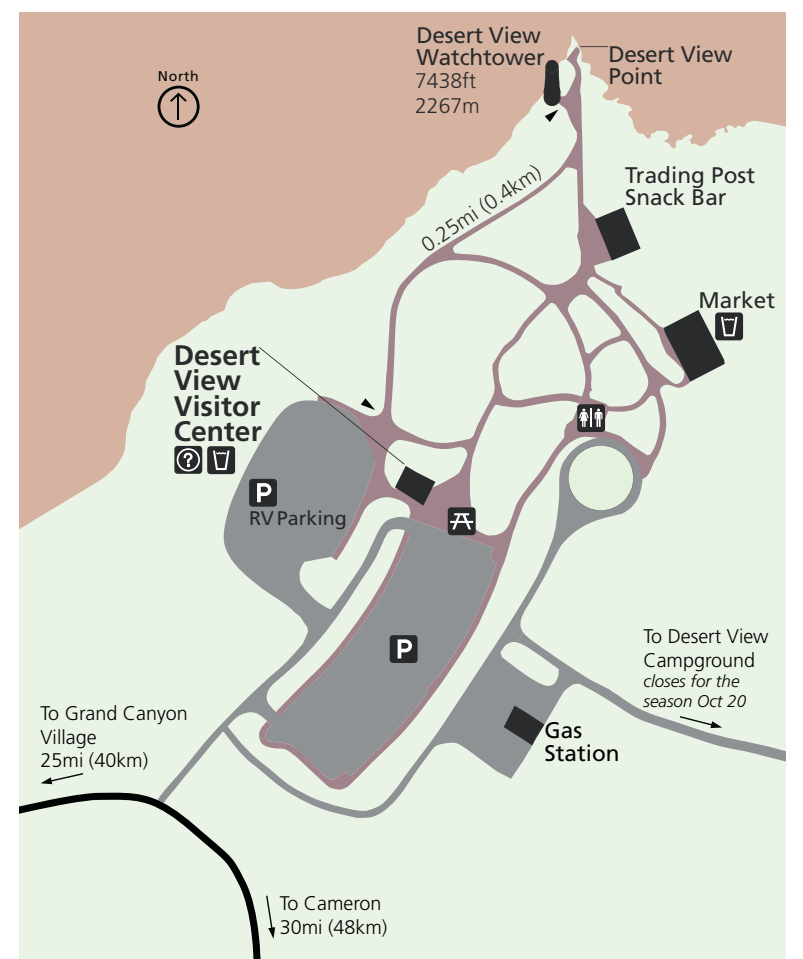
## Services

**Desert View Market**  
Sept 3–29, 9 am–6 pm; Sept 30 to Nov 30, 9 am–5 pm

**Gas Station**  
Convenience store open Sept 3 to Oct 23, 9 am–5 pm and closed starting Oct 24. Fuel, including diesel, available 24 hours a day with credit card.

## Camping

**Desert View Campground (NPS)**  
\$12 per night; no hookups; maximum vehicle length 30 feet (9.1 m). First-come, first-served self-registration. Last night of camping Oct 19; campground closes Oct 20 and reopens in May 2014.



# Staying Safe at Grand Canyon



## What Do I Need to Know About Elevation and Weather?

At 7,000 feet (2,135 m) elevation, you may feel short of breath, nauseous, or tire easily. Direct sun can cause dehydration and sunburn. Use sunblock and drink plenty of water.

Autumn weather varies greatly and can change suddenly. Be prepared with layered clothing for heat, rain, wind, and even snow.

Please slow down and drive carefully during inclement weather.

## Emergencies

Dial 911 or from hotel rooms dial 9-911

### North Country Grand Canyon Clinic

Urgent care available. Sept 3 to Oct 14, 8 am–6 pm, daily; Oct 15 to Nov 30, 8 am–5 pm, Monday to Friday. 928-638-2551



## Where Can I Find Free Drinking Water?

In an effort to reduce litter along hiking trails, plastics in the waste stream, and greenhouse gas emissions, Grand Canyon National Park eliminated the sale of water packaged in individual disposable containers—including plastic and glass bottles.

**Water bottle filling stations are available:** Bring or buy a reusable water bottle and fill it up for free at park visitor centers, lodges, markets, and major trailheads. Reusable souvenir water bottles are available at Park Stores and gift shops.

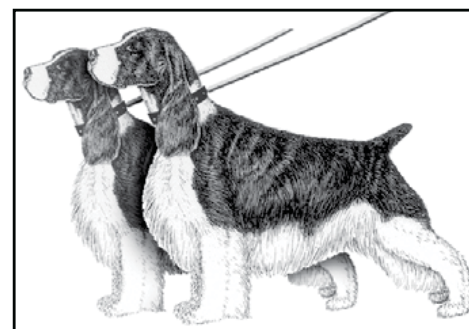
## Never Throw Anything Over the Edge

Never throw rocks, coins, trash, or anything else over the edge. Objects tossed over the edge or dislodged by taking shortcuts can injure hikers and wildlife below.



## How Can I View Grand Canyon Safely?

Stay at least 6 feet (2 m) from the edge and hold on to children. Always be aware of your surroundings. Do not back up without first looking where you are going.



## Where Can I Take My Pet?

Leashed pets are allowed on rim trails, but not below the rim, in buildings, or on shuttle buses. These limits do not apply to service animals. Anyone wishing to take a service animal below the rim must check in at the Backcountry Information Center. For kennel information see page 6.



## How Can I Watch Wildlife Safely?

Never approach or feed any animal. It is dangerous—both to you and the animal—and illegal to do so.

*Deer and elk can be aggressive, especially during the fall rut (September and October) and spring calving season (May and June).*

Stay at least 100 feet (30 m), or about six car lengths, away from larger animals.

Do not feed the squirrels; they will bite and can carry fleas with the plague.

Keep the California condor flying free. Never approach a condor and stay at least 75 feet (23 m) away from these critically endangered birds.

It is tempting to want to get close to animals, but remember they are not pets. Wild animals need space and respect.