



# Elkmont Historic District

## General Management Plan Amendment (GMPA) and Environmental Assessment (EA)

### Invitation to Public Meeting

For several years we have been working with many interested stakeholders about how to best manage the Elkmont Historic District in Great Smoky Mountains National Park. The planning process is now taking a significant step forward, and we hope you will join us along the journey.

Public scoping meetings are set for May 1 and 2 to solicit public comments on how Elkmont should be managed. The purpose of the meetings is to identify issues and concerns the public has regarding management of the natural, cultural, and recreational resources at Elkmont and to present information regarding the planning process, goals and objectives, and the public's role.

The first meeting will be on **Wednesday, May 1, 2002, at the Park Vista Hotel, 705 Cherokee Orchard, Gatlinburg, TN;** and the second meeting on **Thursday, May 2, 2002, at the Biosystem Engineering and Environmental Science Building, 2500 E.J. Chapman Drive on the School of Agriculture Campus of the University of Tennessee, Knoxville.**

Starting at 7:00 p.m., we will provide informational materials, and Park and technical experts will be available to answer questions.

For many of us, the Elkmont Historic District holds a special place in our lives. We look forward to working with you to help plan the future of Elkmont.

Sincerely,

Michael Tollefson, Superintendent  
Great Smoky Mountains National Park

### Background and Purpose

The Elkmont enclave began in the early 1900s when several individuals bought land from the Little River Lumber Company and built vacation cottages. In the 1930s the States of North Carolina and Tennessee began acquiring land for the Great Smoky Mountains National Park. Most Elkmont structures were occupied until 1992.

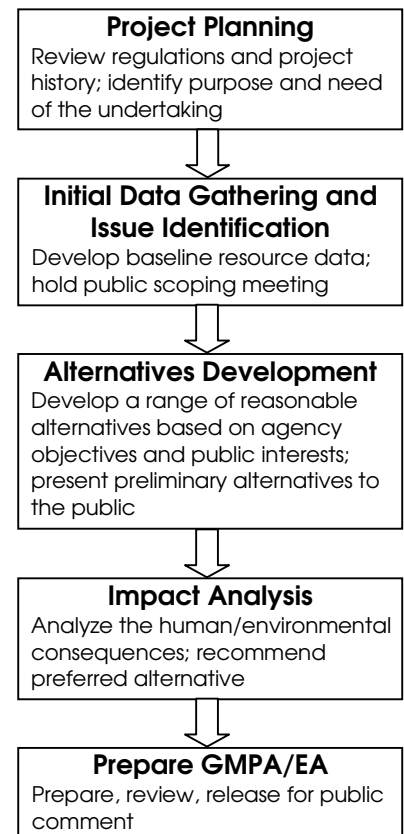
The management strategy for Elkmont was laid out in the *General Management Plan—Great Smoky Mountains National Park*. The Park planned to remove all structures once the leases expired.

In late 1993, however, 67 of the 86 structures were placed on the National Register of Historic Places; consequently, any actions affecting them require review by the Tennessee State Historic Preservation Officer (SHPO). The SHPO, National Park Service, and special interest groups have had several discussions since 1992, but a managerial strategy that strikes a balance between the cultural, natural, and recreational experiences at Elkmont has not been determined.

In October 2000 a decision was made to begin a new planning process in which several alternatives will be developed and analyzed. The end product will be a GMPA/EA in compliance with the National

Environmental Policy Act (NEPA) and Sections 106 and 110 of the National Historic Preservation Act (NHPA). Public participation is vital to the planning process to identify and assess alternatives and to develop an appropriate management plan.

### Planning Process



The NEPA process gives interested members of the public several opportunities to participate in decision-making.



National Park Service  
U.S. Department of the Interior

If you would like to participate in a facilitated workshop, or receive a questionnaire to provide input on the management of the Elkmont Historic District, or receive email updates, contact us at:

**Superintendent**  
Great Smoky Mountains National Park  
107 Park Headquarters Road  
Gatlinburg, TN 37738

**E-mail**  
ElkmontComments@tnainc.com

**Website**  
www.elkmont-gmpa-ea.com  
(online beginning May 6, 2002)

The National Park Service cares for the special places saved by the American people so that all may experience our heritage.

## Public Involvement in Elkmont's Future

The overall objective of the GMPA/EA is to keep all citizens who have a stake in the outcome of the project informed and involved throughout the scoping and planning process.

Project-specific objectives are to:

- Accurately describe interests and values the public holds in relation to natural and cultural resources and visitor experience.
- Create a plan that can be successfully implemented in accordance with National Park Service policies and legal mandates, and that considers the values and

interests of the public.

To this end, the National Park Service plans to hold public meetings and facilitated workshops to keep interested members of the public informed about the planning process and to solicit input on how the Elkmont Historic District should be managed. We will issue periodic newsletters and provide updates on a regular basis.

If you are interested in additional information or would like to be added to our mailing list, please contact us at the addresses in the left-hand column.

---

## 2 Elkmont Historic District GMPA/EA



National Park Service  
U.S. Department of the Interior

Great Smoky Mountains National Park  
107 Park Headquarters Road  
Gatlinburg, TN 37738

*Announcing  
Elkmont  
Planning Meetings*