

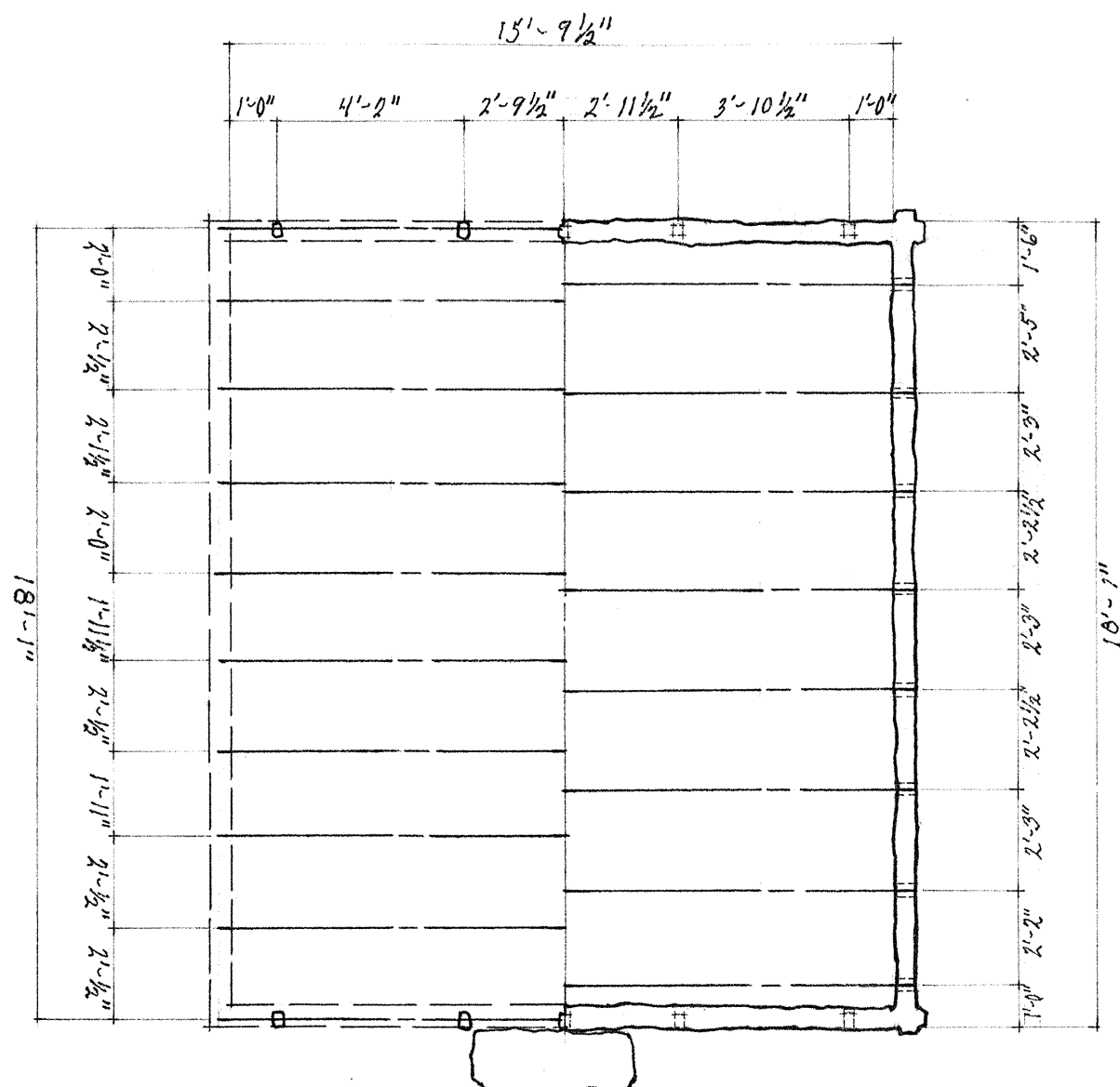
Chandler Jenkins Cabin
Indian Camp Road
Great Smoky Mountains National Park
Cocke County, Cosby Vicinity
Tennessee

HABS No. TN-120

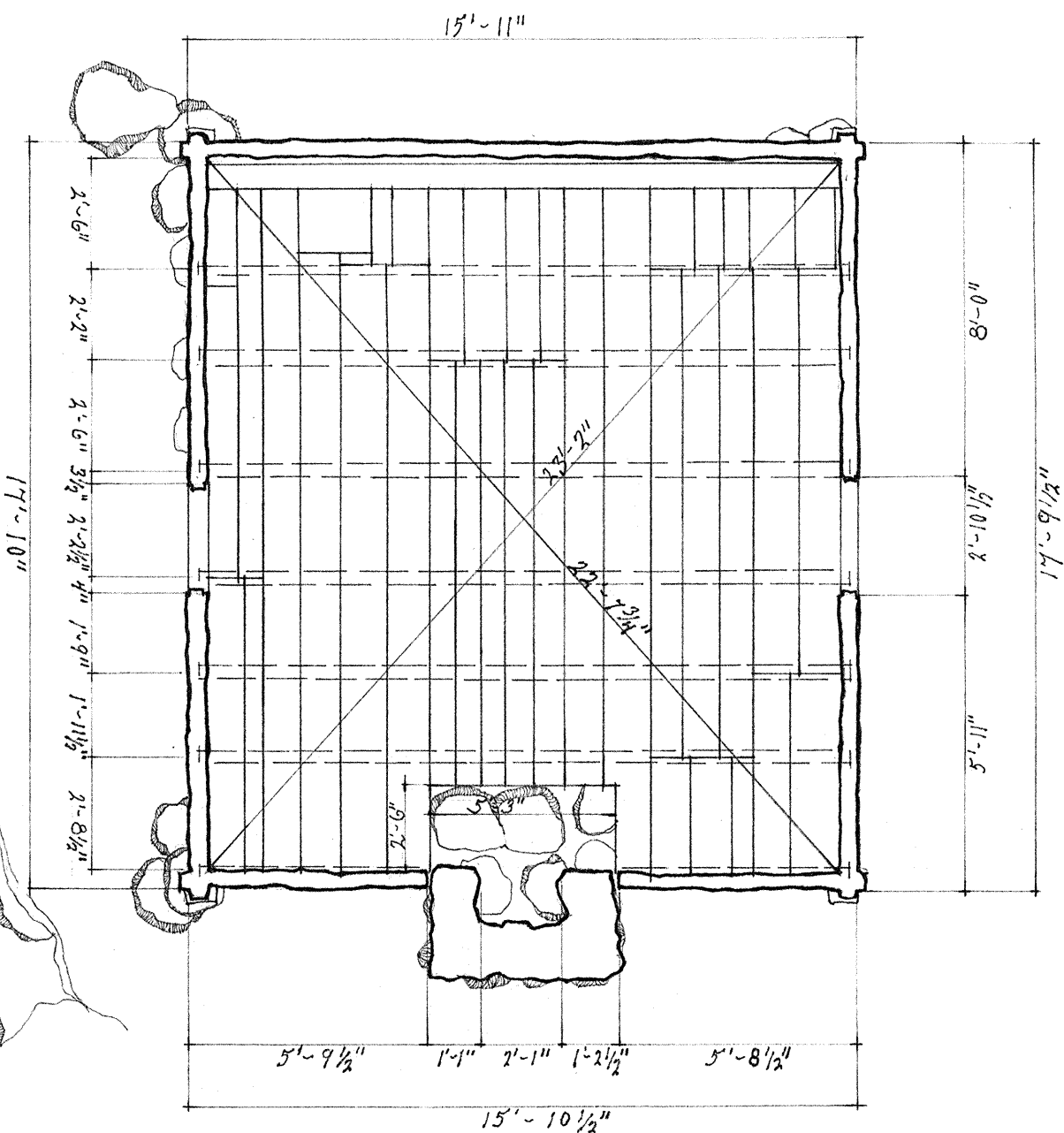
HABS
-TENN
15 - COSBY, V
1-

REDUCED COPIES OF MEASURED DRAWINGS

Historic American Buildings Survey
National Park Service
Department of the Interior
Washington, D.C.



ROOF RAFTER PLAN • LOFT JOIST PLAN

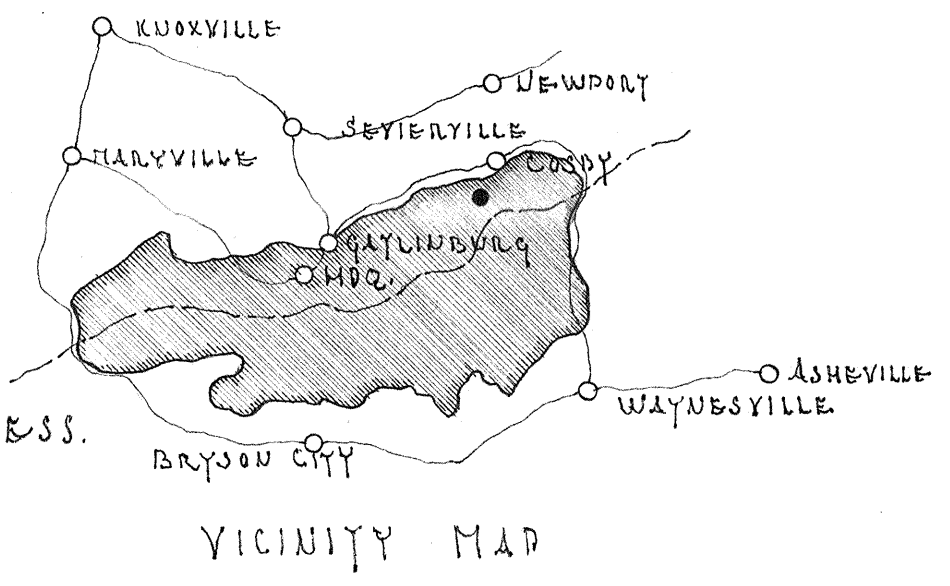


FLOOR PLAN
SCALE: 1/4" = 1'-0"

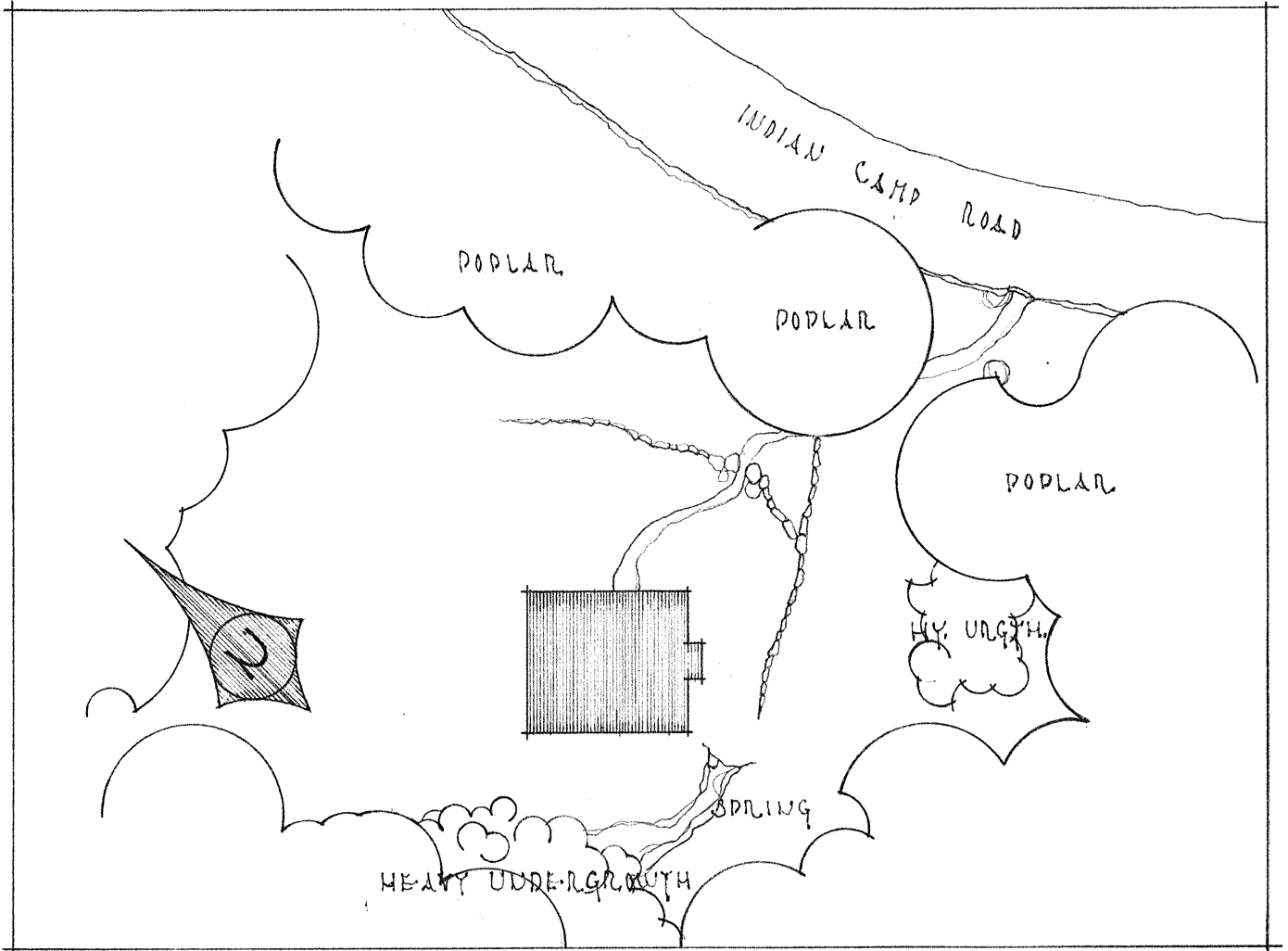
• GENERAL INFORMATION •

OBSERVATIONS & MEASUREMENTS MADE AT THE SITE IN JUNE, 1963 BY C.S. GROSSMAN & D.M. DONAHUE

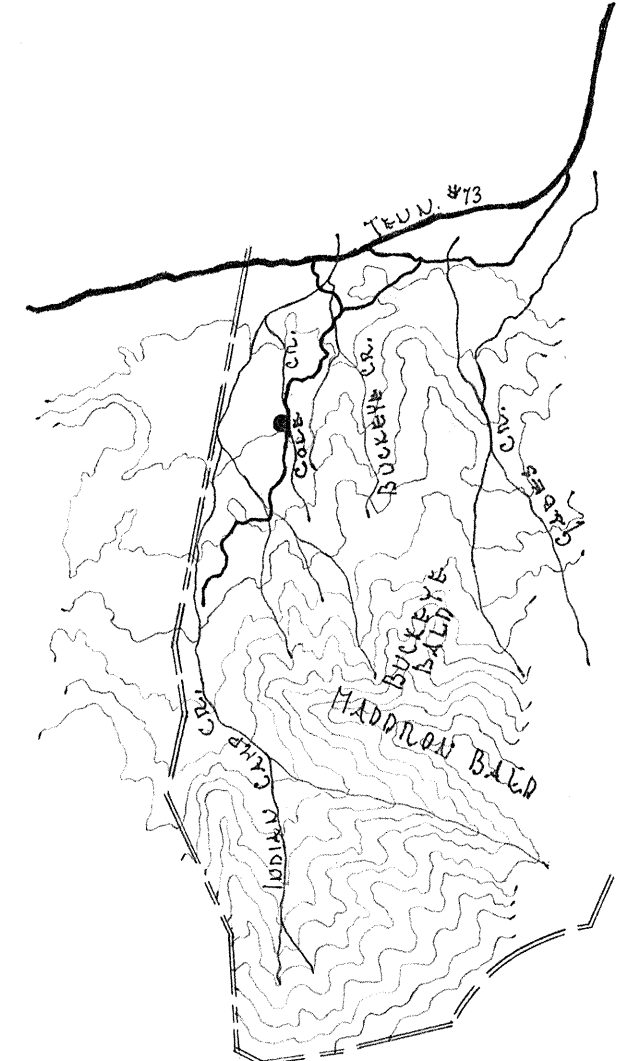
- WALLS ARE CONSTRUCTED OF HEWN CHESTNUT LOGS; RECTANGULAR IN CROSS SECTION, WIDTH RANGE 4"-6"
- SADDLE-NOTCH JOINTS ARE USED AT ALL FOUR CORNERS; PERPENDICULAR BUTTS USED AT DOOR JAMBS, WOOD DOWELS UTILIZED AS JOINT LINKS.
- FLOOR CONSISTS OF CIRCULARLY SAWN PINE BOARDS, PLACED AS INDICATED ON DRAWING, RANGING IN SIZE FROM 3'-15" IN WIDTH, 1" THICKNESS.
- FLOOR JOISTS ARE TWO SIDED HEWN CHESTNUT LOGS 4'-4 1/2" x 4'-3"
- LOFT JOISTS ARE HEWN CHESTNUT LOGS 4'-4 1/2" x 3 1/2"



VICINITY MAP

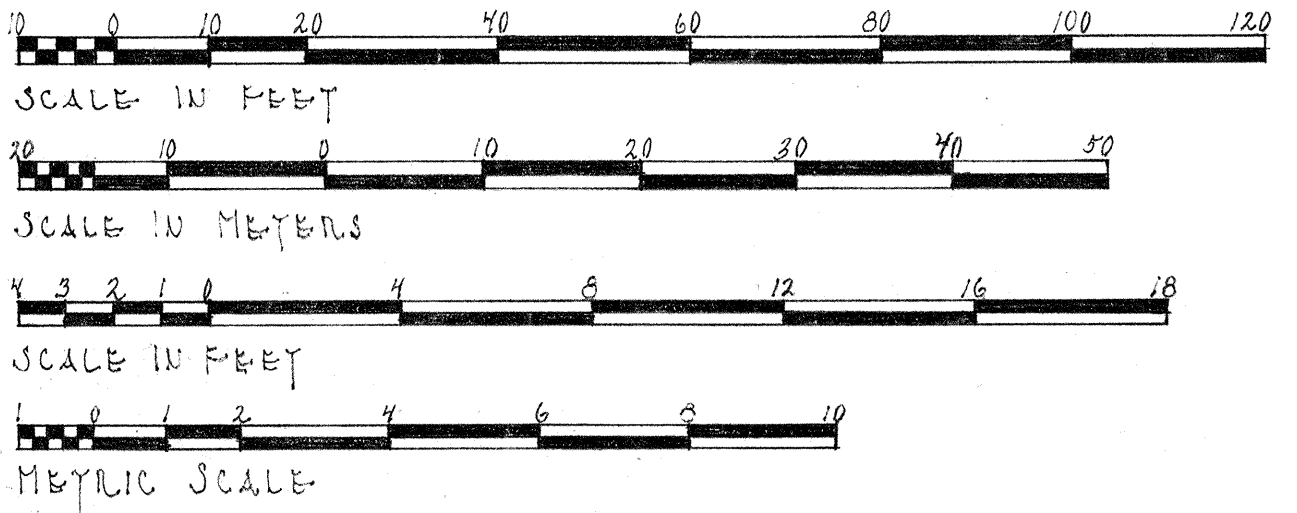


PLOT PLAN
SCALE: 1" = 20'-0"



CABIN LOCATION
SCALE: 1" = 1 MILE

- SPLIT CHESTNUT RAFTERS, 3'-3 1/2" x 3 1/2" x 4 1/2"
- ORIGINAL ROOF CONSISTING OF RIVED SHINGLES ON SPLIT SHINGLE LATH, EXPOSURE APPROXIMATELY 12"
- CHIMNEY OF LAID FIELD STONE & MUD MORTAR.
- FOUNDATION PIERS CONSISTING OF DRY ROCK PILES.
- HAND DRESSED YELLOW POPLAR MEMBERS MAKE UP THE DOORS, 4 TO EACH DOOR, 1" THICK, APPROXIMATELY 8" IN WIDTH.



D.M. DONAHUE, DEL.

UNDER DIRECTION OF UNITED STATES DEPARTMENT OF THE INTERIOR
NATIONAL PARK SERVICE, BRANCH OF PLANS AND DESIGN

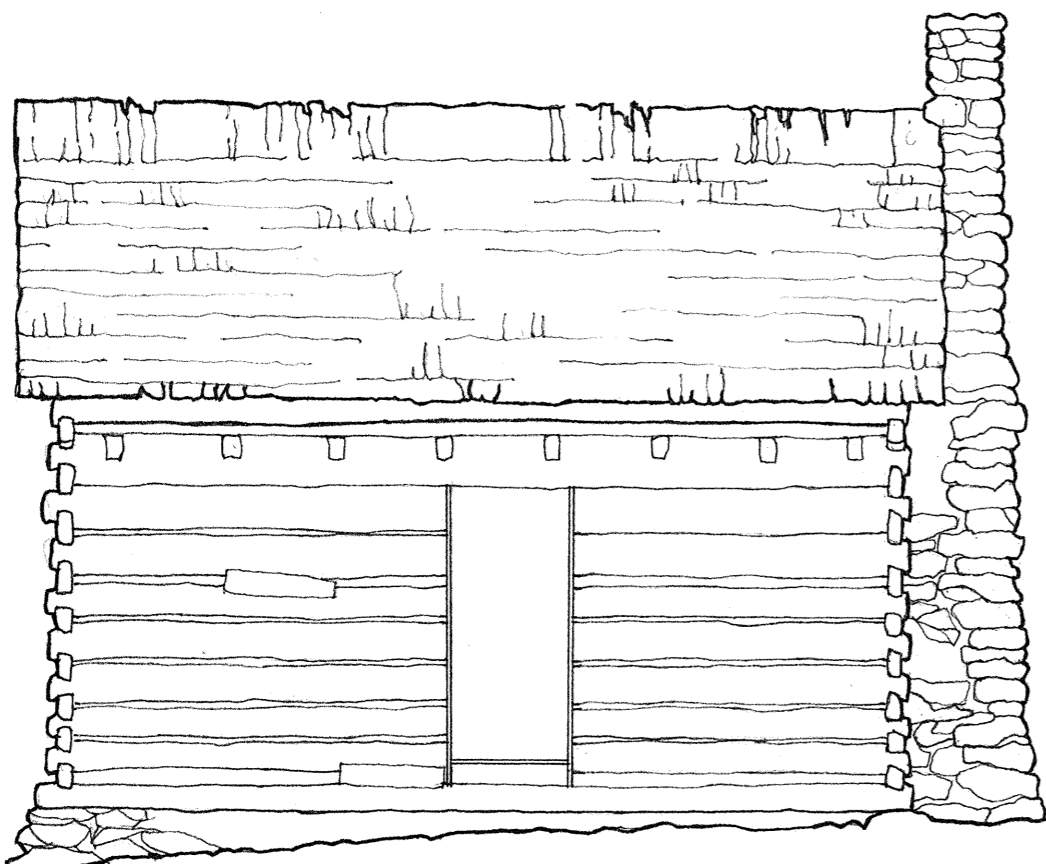
INDIAN CAMP ROAD • G.S.M.N.P. • COCKE COUNTY • TENNESSEE

NAME OF STRUCTURE
CHANDLER JENKINS CABIN

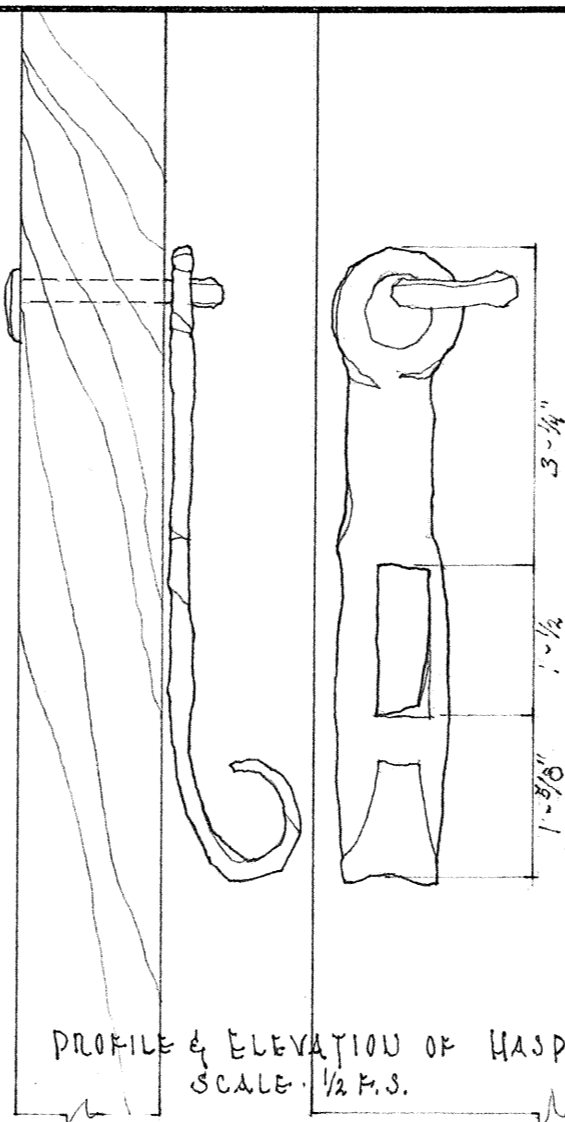
SURVEY NO.
TENN
120

HISTORIC AMERICAN
BUILDINGS SURVEY
SHEET 1 OF 2 SHEETS

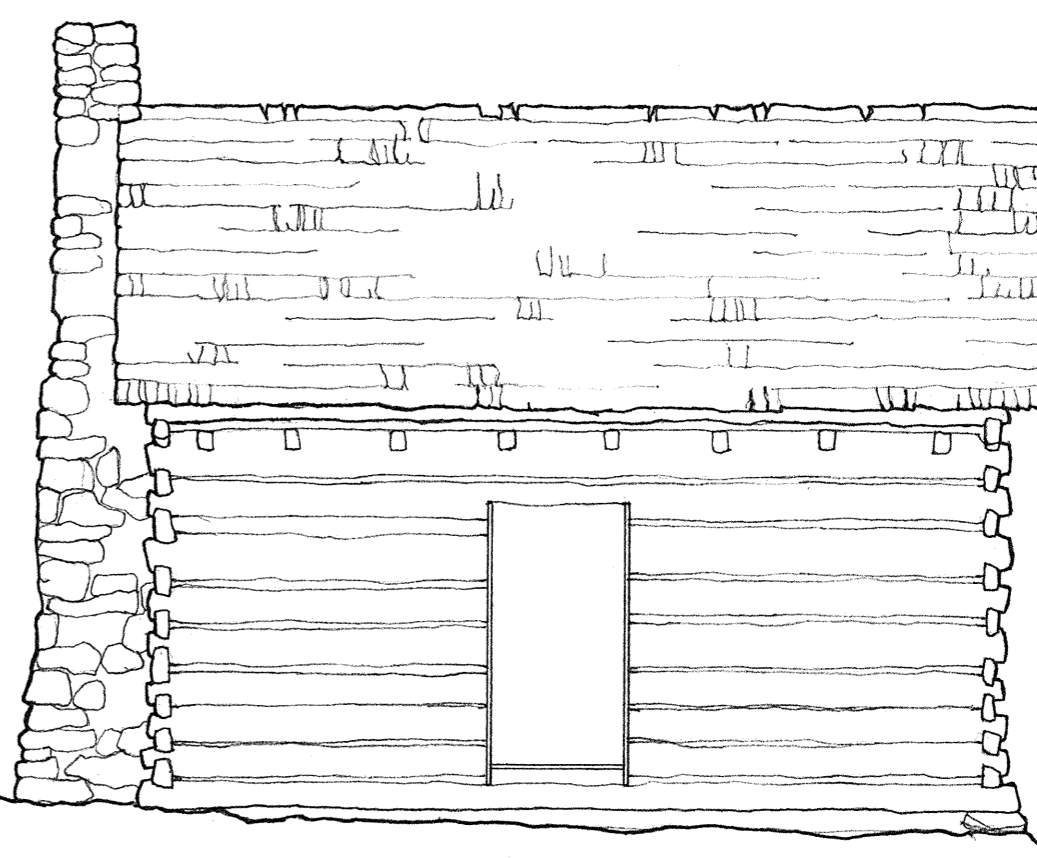
LIBRARY OF CONGRESS
INDEX NUMBER



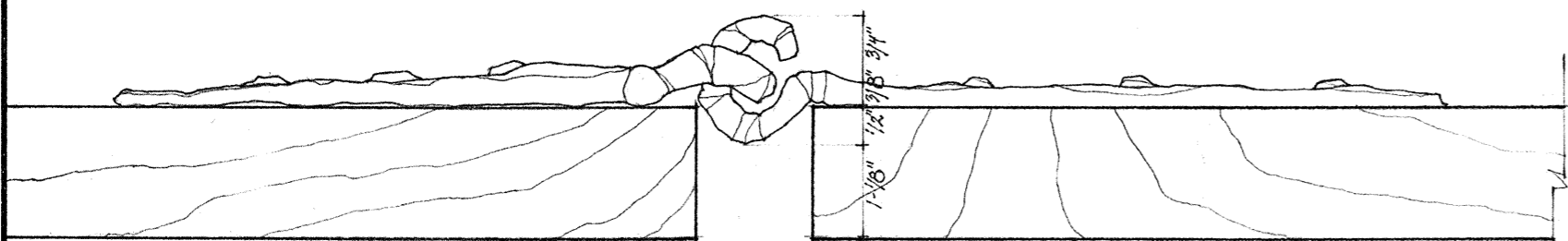
WEST ELEVATION
SCALE: 1/4" = 1'-0"



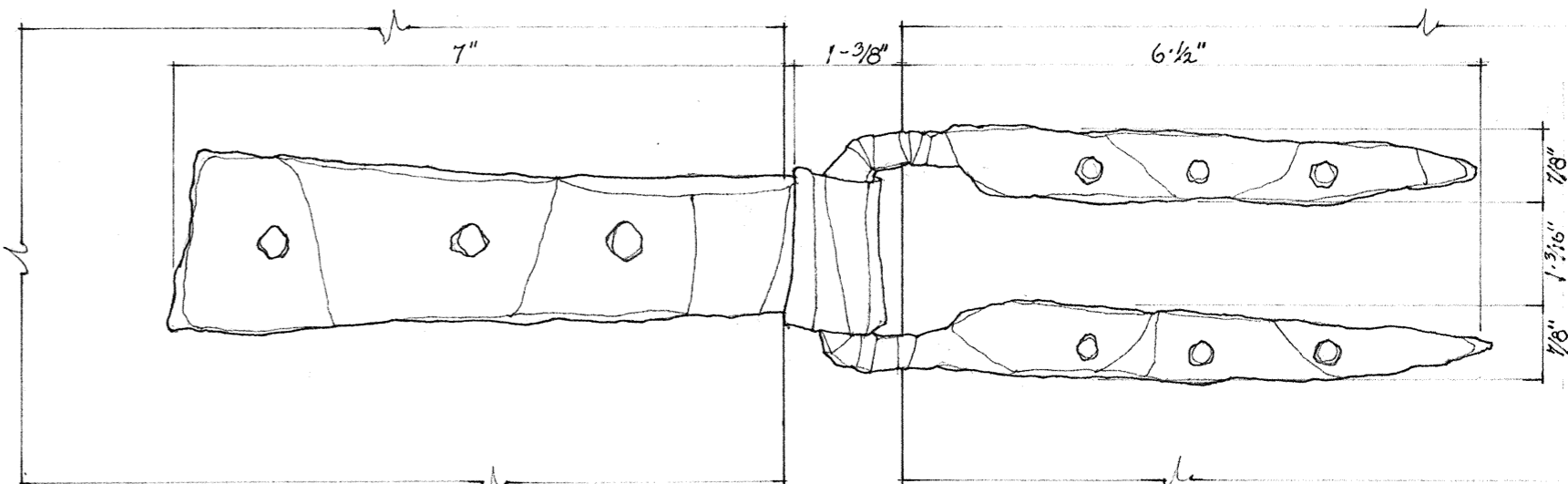
PROFILE & ELEVATION OF HASP
SCALE: 1/2 F.S.



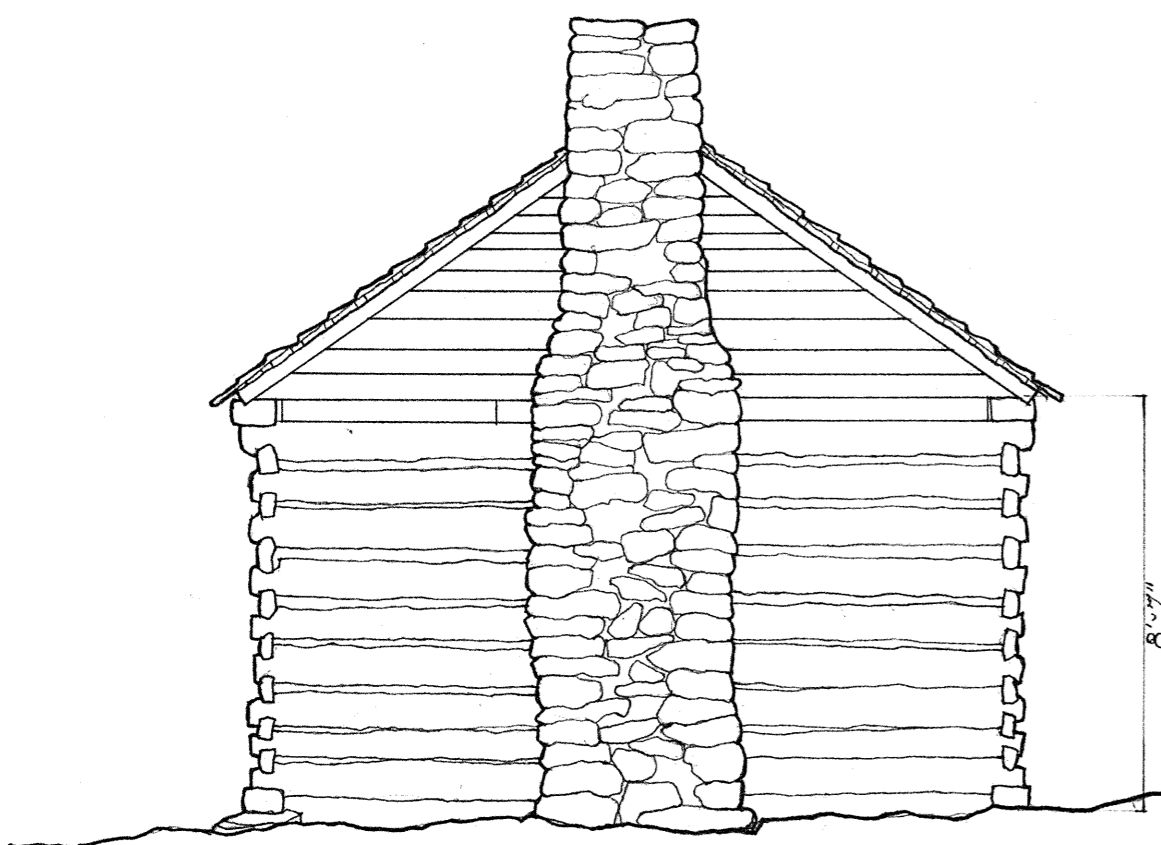
EAST ELEVATION
SCALE: 1/4" = 1'-0"



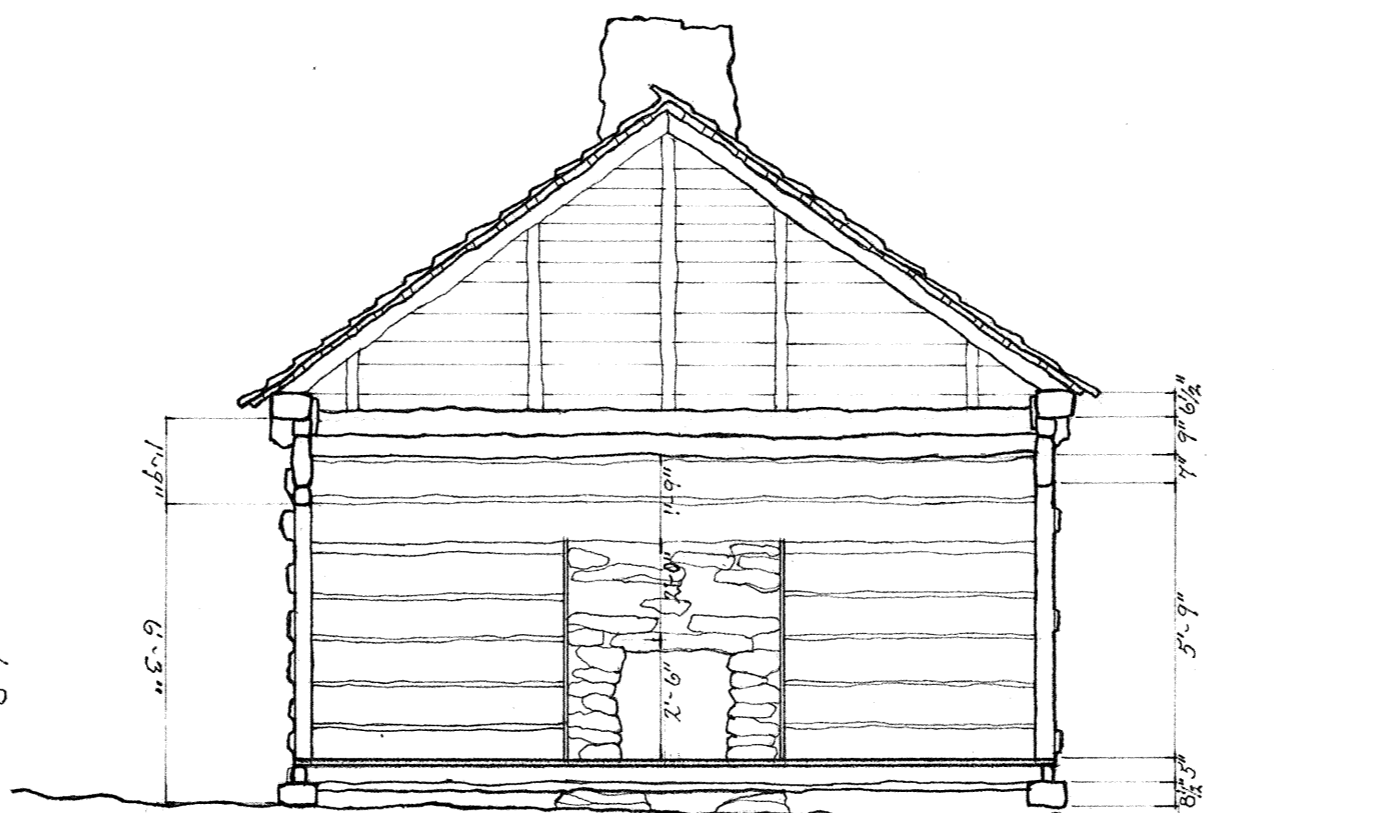
HORIZONTAL SECTION OF DOOR; HINGE IN PROFILE
SCALE: 1/2 F.S.



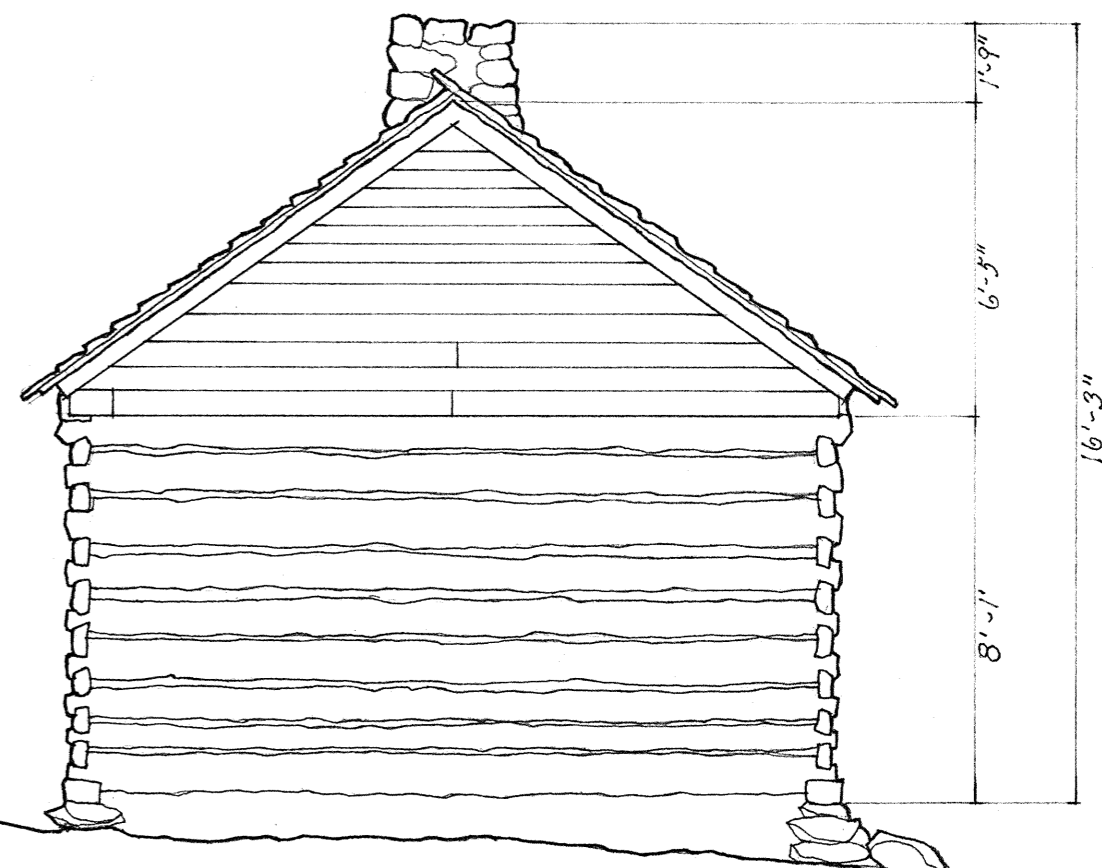
ELEVATION OF HINGE
SCALE: 1/2 F.S.



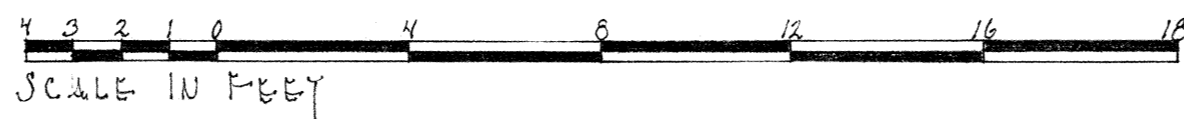
SOUTH ELEVATION
SCALE: 1/4" = 1'-0"



SECTION THROUGH DOORS
SCALE: 1/4" = 1'-0"



NORTH ELEVATION
SCALE: 1/4" = 1'-0"



SCALE IN FEET

D.M. DOUANE, DEL.

UNDER DIRECTION OF UNITED STATES DEPARTMENT OF THE INTERIOR
NATIONAL PARK SERVICE, BRANCH OF PLANS AND DESIGN

NAME OF STRUCTURE

CHANDLER JENKINS CABIN
INDIAN CAMP ROAD • G.S.M.N.P. • COCKE COUNTY • TENNESSEE

SURVEY NO.
TENN
120

HISTORIC AMERICAN
BUILDINGS SURVEY
SHEET 2 OF 2 SHEETS

LIBRARY OF CONGRESS
INDEX NUMBER