

Junglebrook Tub Mill  
Great Smoky Mountains National Park  
Gatlinburg Vicinity  
Sevier County  
Tennessee

<sup>1/33</sup>  
HABS No. TN-165

HABS  
TENN  
78-GAT.V<sub>2</sub>  
2-

REDUCED COPIES OF MEASURED DRAWINGS

JUNGLEROOK TUB MILL  
GREAT SMOKY MOUNTAIN NATIONAL PARK  
GATLINBURG VICINITY, SEVIER COUNTY, TENNESSEE

HISTORIC AMERICAN BUILDINGS SURVEY  
U. S. DEPARTMENT OF THE INTERIOR  
NATIONAL PARK SERVICE  
BRANCH OF PLANS AND DESIGN

MEASURED:

DRAWN: 1958

MEASUREMENTS CHECKED:

DRAWINGS APPROVED:

DRAWINGS APPROVED:

ACCEPTED FOR LIBRARY OF CONGRESS:

*John B. Cabot*

, DISTRICT OFFICER.

, CHIEF ARCHITECT.

SURVEY NO.

TENN  
163

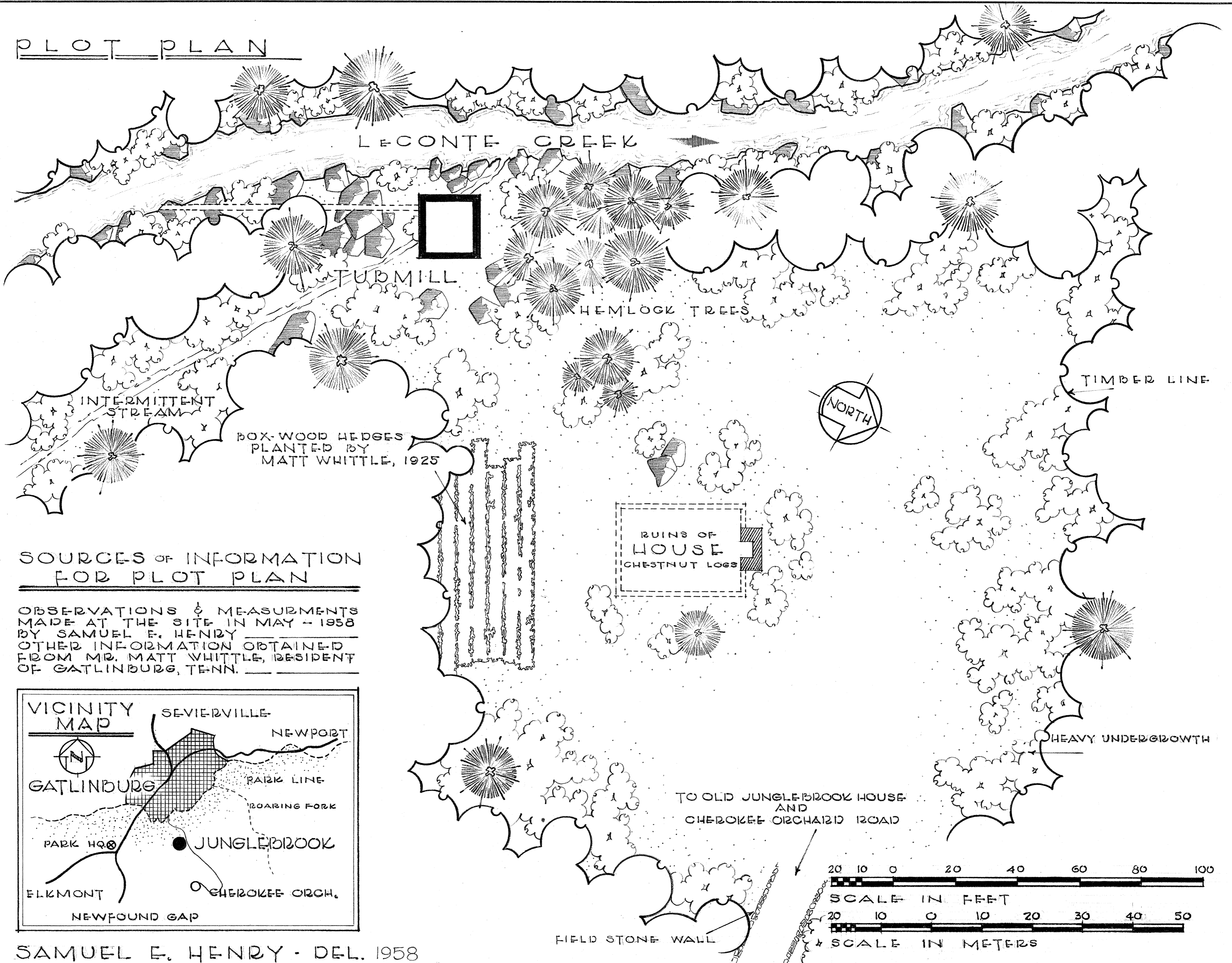
6 SHEETS

INDEX NO.

TENN.  
78-GAT.V

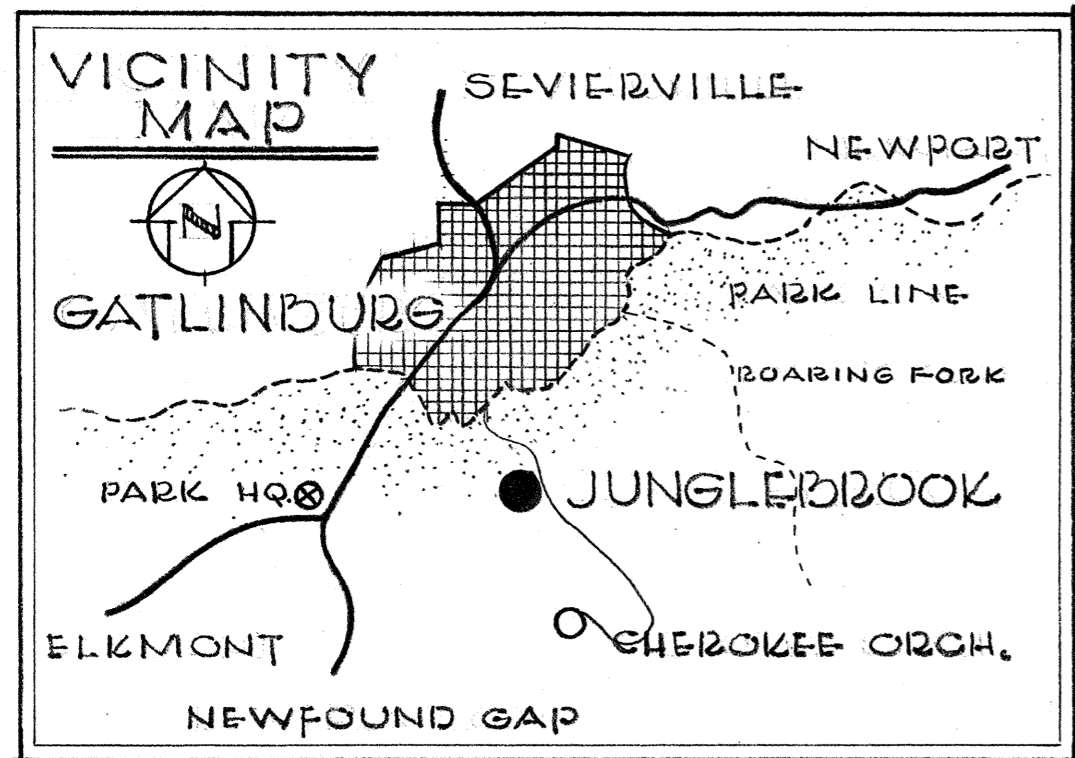
2-

# PLOT PLAN



## SOURCES OF INFORMATION FOR PLOT PLAN

OBSERVATIONS & MEASUREMENTS MADE AT THE SITE IN MAY - 1958 BY SAMUEL E. HENDY  
 OTHER INFORMATION OBTAINED FROM MR. MATT WHITTLE, RESIDENT OF GATLINBURG, TENN.



SAMUEL E. HENDY - DEL. 1958

EASTERN OFFICE, DIVISION OF DESIGN & CONSTRUCTION  
 PHILADELPHIA  
 UNDER DIRECTION OF UNITED STATES DEPARTMENT OF THE INTERIOR  
 NATIONAL PARK SERVICE, BRANCH OF PLANS AND DESIGN

NAME OF STRUCTURE  
**JUNGLEBROOK TUB MILL**  
 GATLINBURG VICINITY - GREAT SMOKY MOUNTAINS NATIONAL PARK - SEVIER COUNTY - TENNESSEE.

SURVEY NO.  
 TENN  
 163

HISTORIC AMERICAN BUILDINGS SURVEY  
 SHEET 1 OF 6 SHEETS

LIBRARY OF CONGRESS INDEX NUMBER

# PLAN & DETAILS

THE WALLS OF THE TUB-MILL ARE CONSTRUCTED OF HAND SPLIT CHESTNUT LOGS. THEY ARE SIMILAR TO THE RAILS USED IN SPLIT RAIL FENCES, A LITTLE LARGER. THE LOGS ARE GENERALLY TRIANGULAR IN SHAPE. ALL THE TIMBER USED IN THE MILL WALLS ARE CHESTNUT WITH THE EXCEPTION OF THOSE MEMBERS WHICH HAD TO BE REPLACED BY THE N.P.S. THESE MEMBERS WILL BE NOTED ON THE PROPER ELEVATIONS.....

THE FOLLOWING INFORMATION WAS TAKEN FROM BUILDING FOLDER FILE NO. 132, PARK HEADQUARTERS, GSMNP AS COMPILED BY M.O. HENDERSON, PARK CARPENTER, IN 1948.....

### ROOF INFORMATION

"OAK SHAKES, APPROX. 30" LONG AND 5" WIDE, WITH 14" EXPOSURE TO THE WEATHER, 3 COURSES OF SHINGLES ON EACH SIDE OF ROOF"

### REPLACEMENTS

"NEW RIP POLE AND 2"x4" RAFTERS, SHEATHED WITH SALVAGED MATERIALS. NEW ROOF WITH 65# ASPHALT ROLLED ROOFING, TWO NEW LOGS IN GABLES, (ONE FRONT, ONE BACK), 3 NEW POST UNDER SIDE OF MILL NEXT TO THE CREEK AND BRACED. REPLACED FIRST RIGHT RIP AND LEFT SECOND LOG. REPAIRED THE FOUNDATION, AND ALL CORNERS WERE BRACED....."

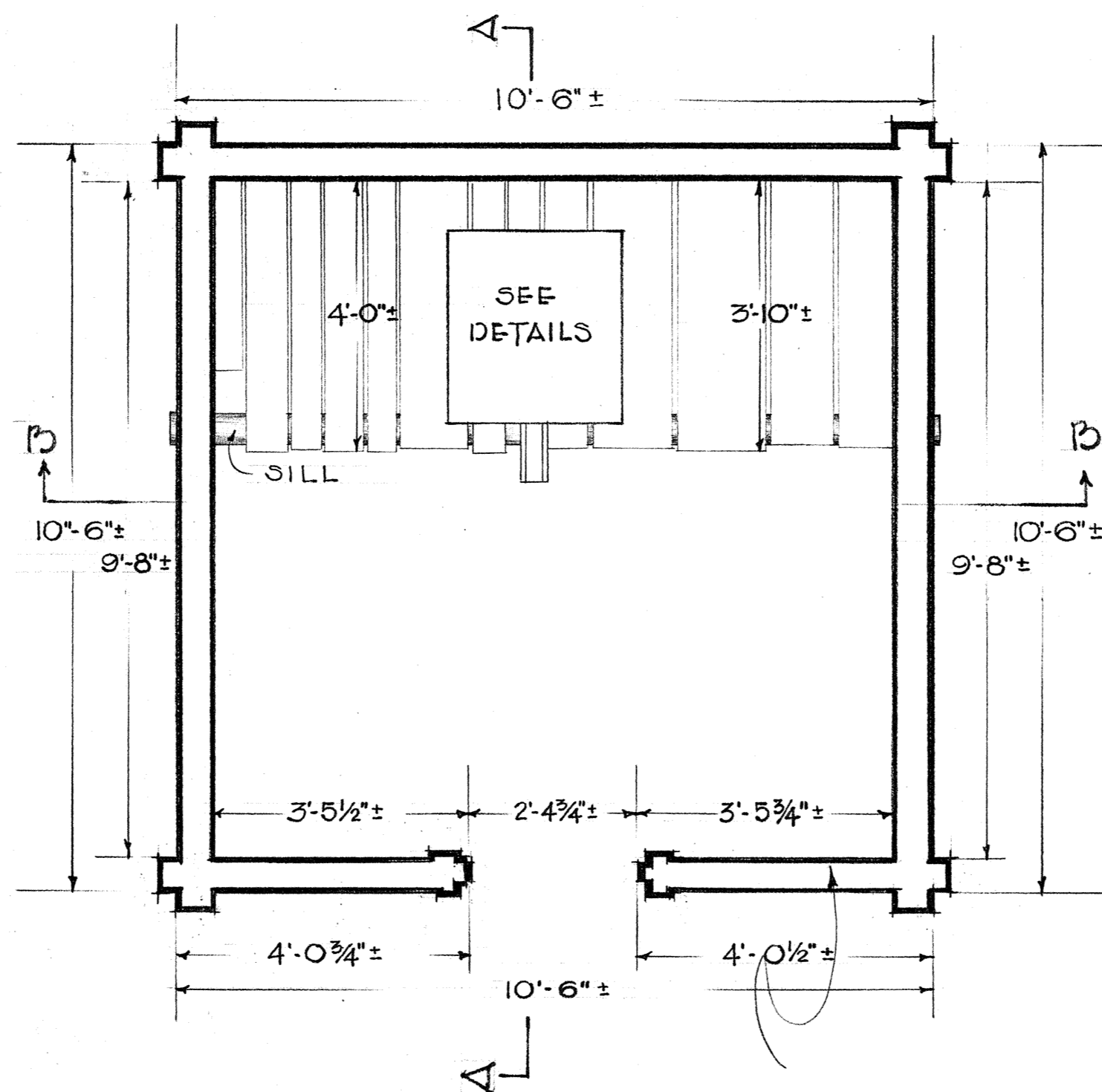
THIS IS SAID TO HAVE BEEN THE SMALLEST MILL IN THE PARK. (R.A. WILHELM, PARK LANDSCAPE ARCHITECT.).

THE CORNERS OF THE TUB-MILL ARE HELD BY THE SADDLE-NOTCH JOINTS.....

DOOR OF THE MILL IS MISSING. HALF OF A HANDMADE WOODEN HINGE IS STILL NAILED TO THE DOOR TRIM INSIDE. (SEE DETAIL).

SAMUEL E. HENRY - DEC. 1958

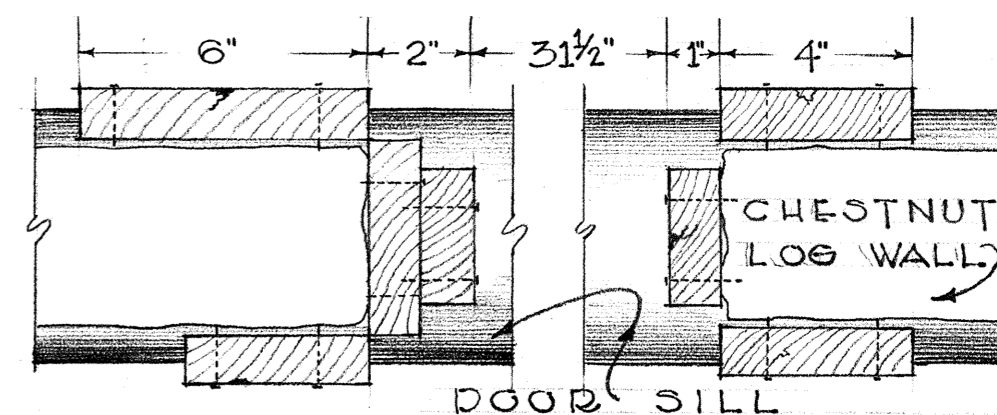
FEW OF THE MECHANICAL PARTS OF THE TUB-MILL WERE SALVAGED. THE MILL STONES (SEE DETAILS) ARE INSIDE OF THE MILL. STORED IN THE "BED BARN", BUILDING NO. 202, CADES COVE, ARE TWO (2) SECTIONS OF THE FLUME, THE TUB-WHEEL (TURBINE), AND THE STONE BAND. (SEE DETAILS). THESE PARTS WERE REMOVED FROM THE MILL SITE BY THE N.P.S. WHEN REPAIRS WERE BEING MADE ON THE MILL IN 1948. STORED UNDER TAG NO.5.



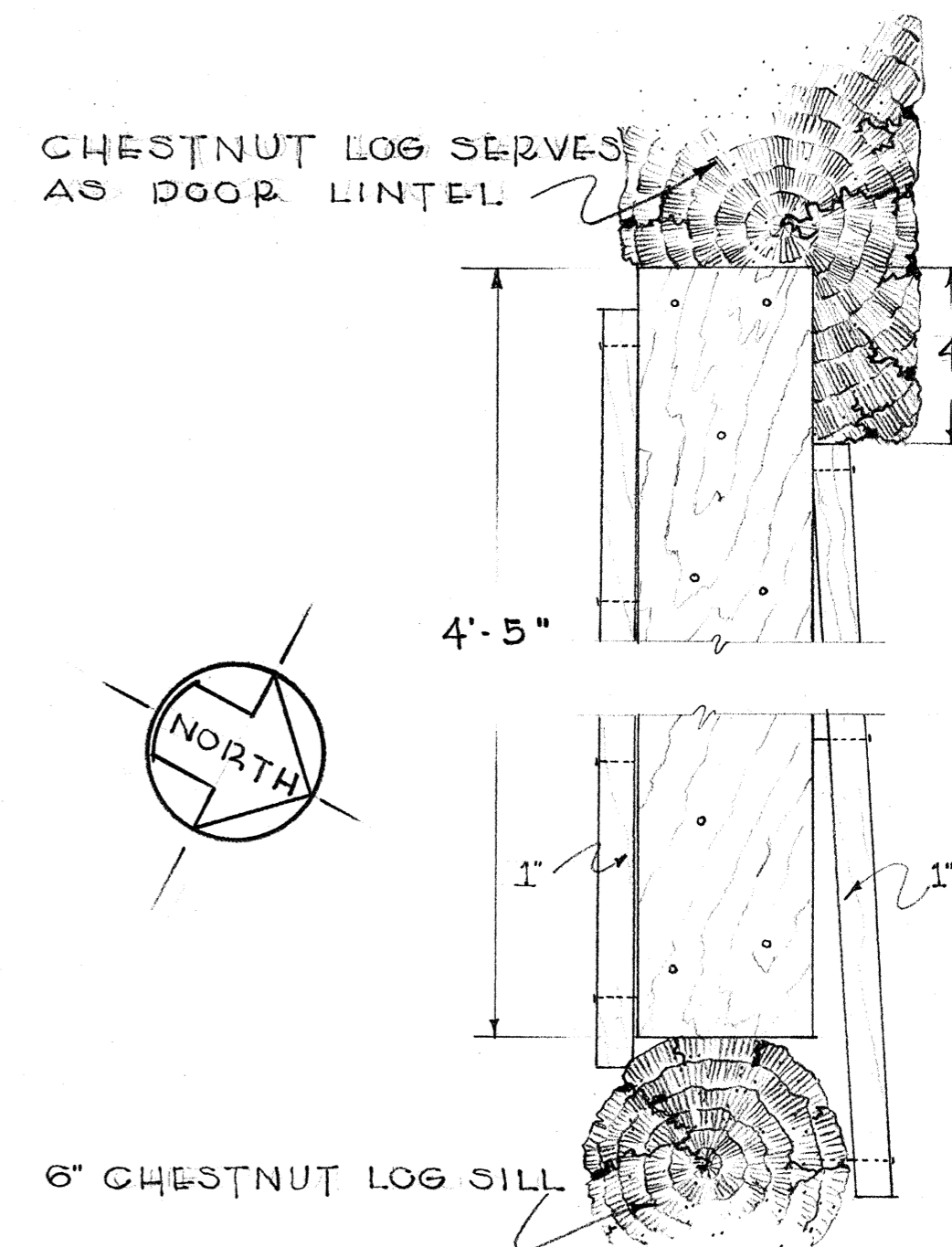
PLAN  
SCALE: 1/2" = 1'-0"

WALLS VARY FROM 5" TO 9" THICK

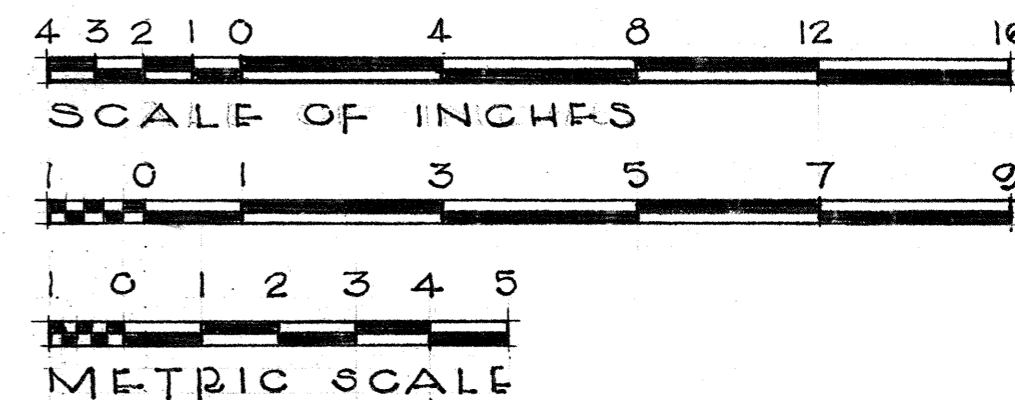
THE ORIGINAL FLOORING OF THE TUB-MILL HAS PRACTICALLY ROTTED AWAY. THERE ARE SEVERAL BOARDS WEDGED BETWEEN THE SILL LOG AND THE FIRST WALL LOG WHICH INDICATES THE FLOORING WAS OF CIRCULAR-SAWN OAK BOARDS RANGING FROM 4" TO 15" WIDE AND APPROXIMATELY 1" THICK.....



HORIZONTAL SECT. OF DOOR  
SCALE: 3" = 1'-0"



VERTICAL SECTION OF DOOR  
SCALE: 3" = 1'-0"



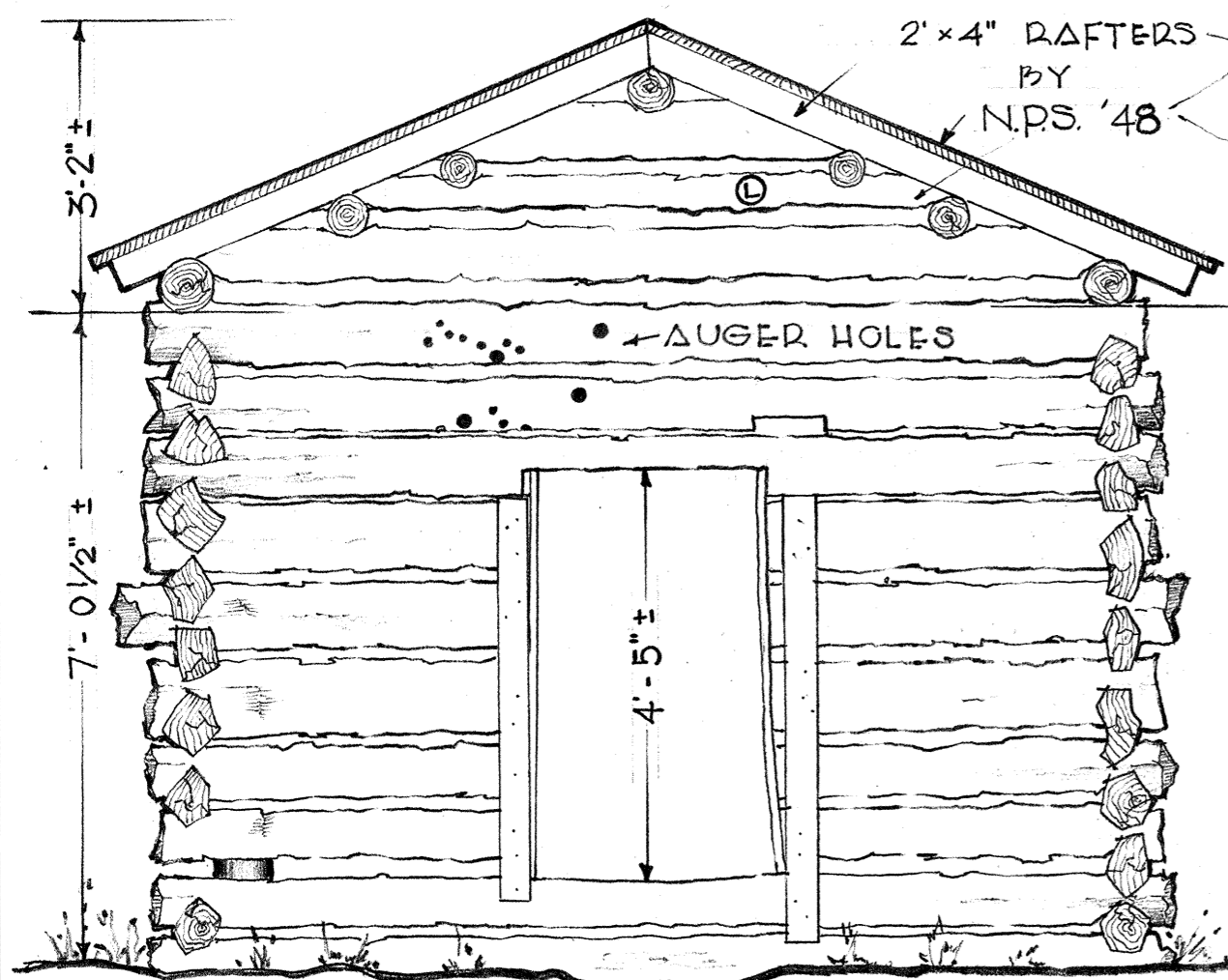
EASTERN OFFICE, DIVISION OF DESIGN AND CONSTRUCTION  
PHILADELPHIA  
UNDER DIRECTION OF UNITED STATES DEPARTMENT OF THE INTERIOR  
NATIONAL PARK SERVICE, BRANCH OF PLANS AND DESIGN

NAME OF STRUCTURE  
**JUNGLE BROOK TUB-MILL**  
GATLINBURG VICINITY • GREAT SMOKY MOUNTAINS NATIONAL PARK • SEVIER COUNTY • TENNESSEE

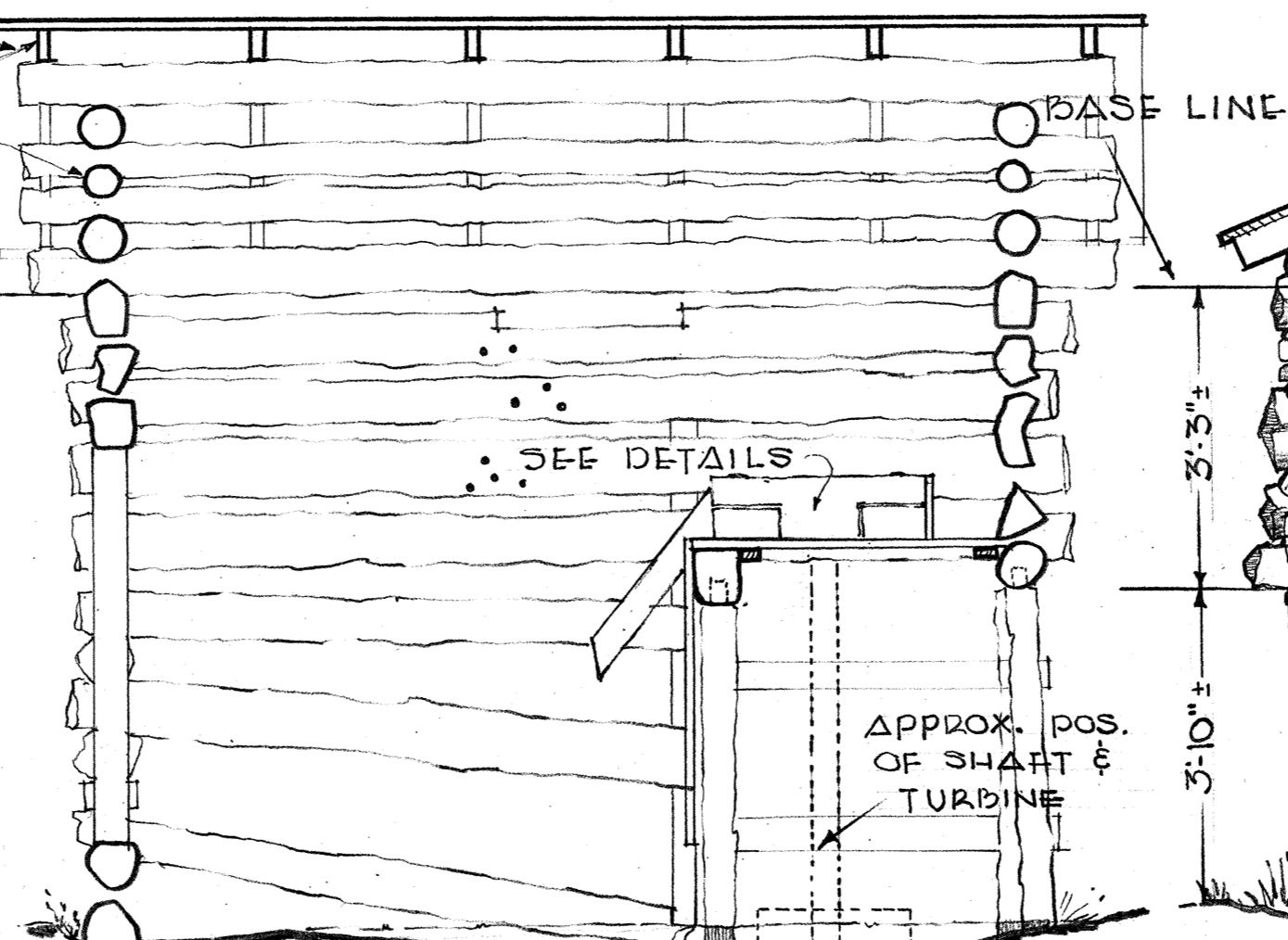
SURVEY NO.  
TENN  
163

HISTORIC AMERICAN  
BUILDINGS SURVEY  
SHEET 2 OF 6 SHEETS

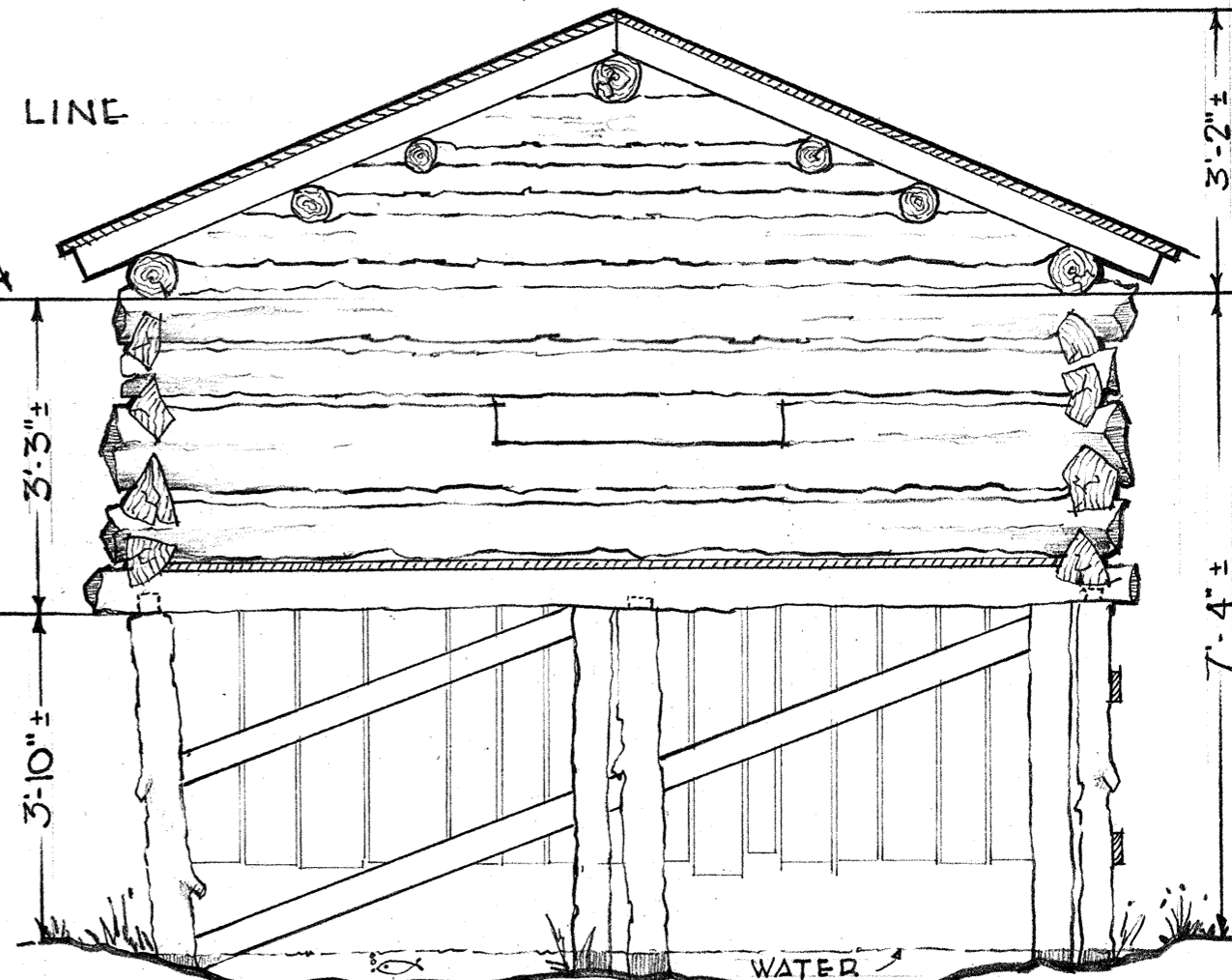
LIBRARY OF CONGRESS  
INDEX NUMBER



NORTH ELEVATION

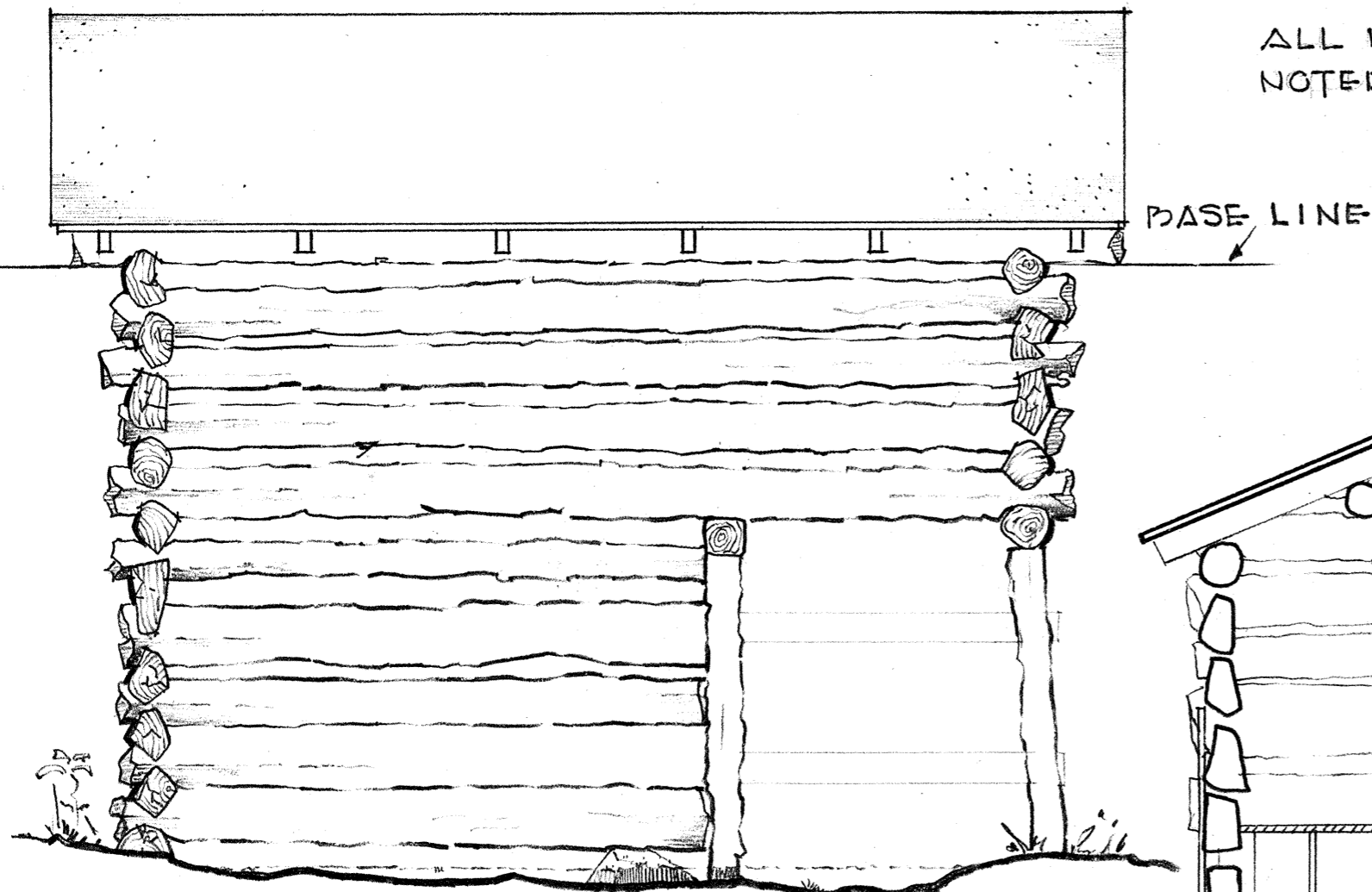


SECTION "A"

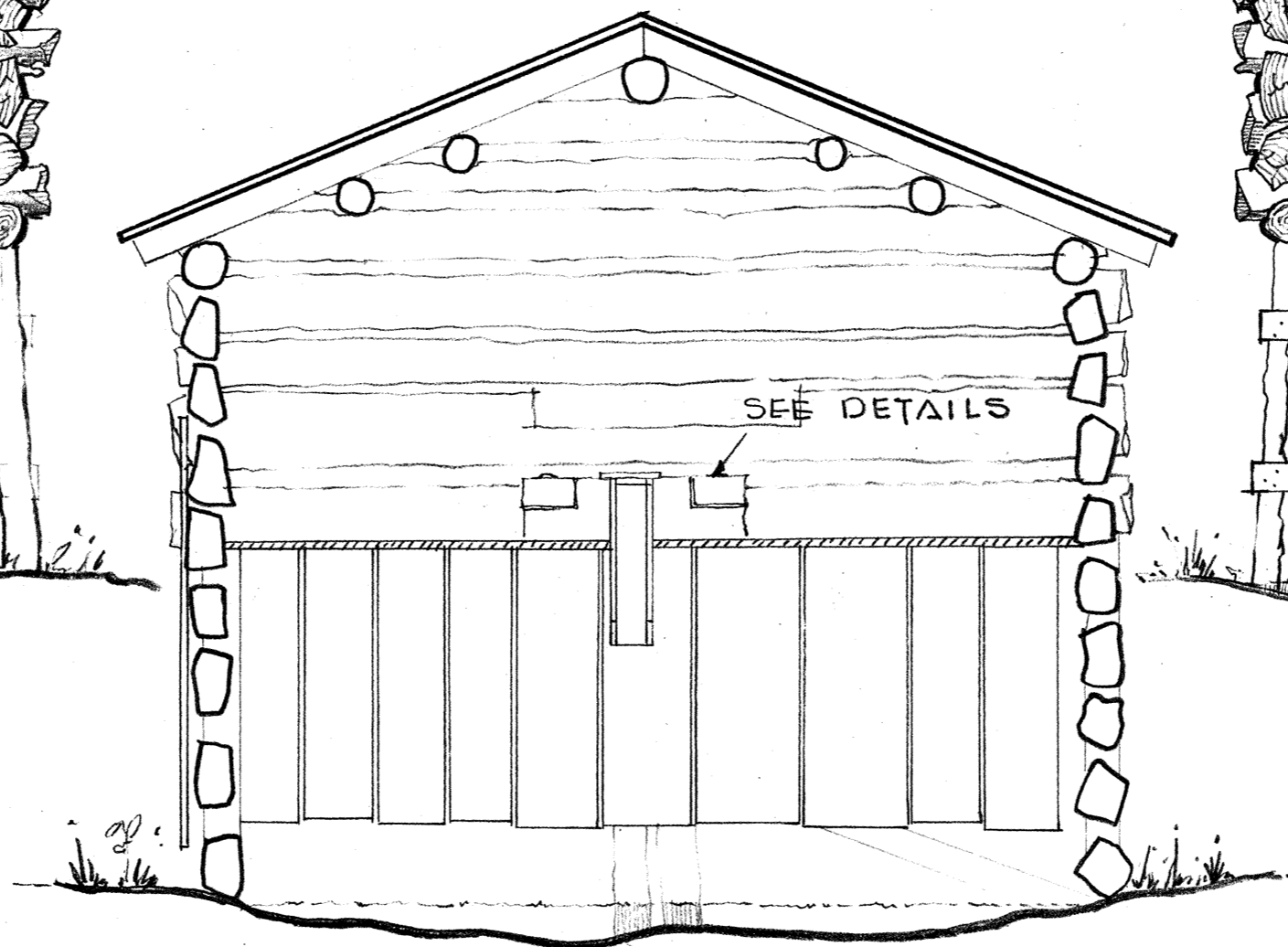


SOUTH ELEVATION

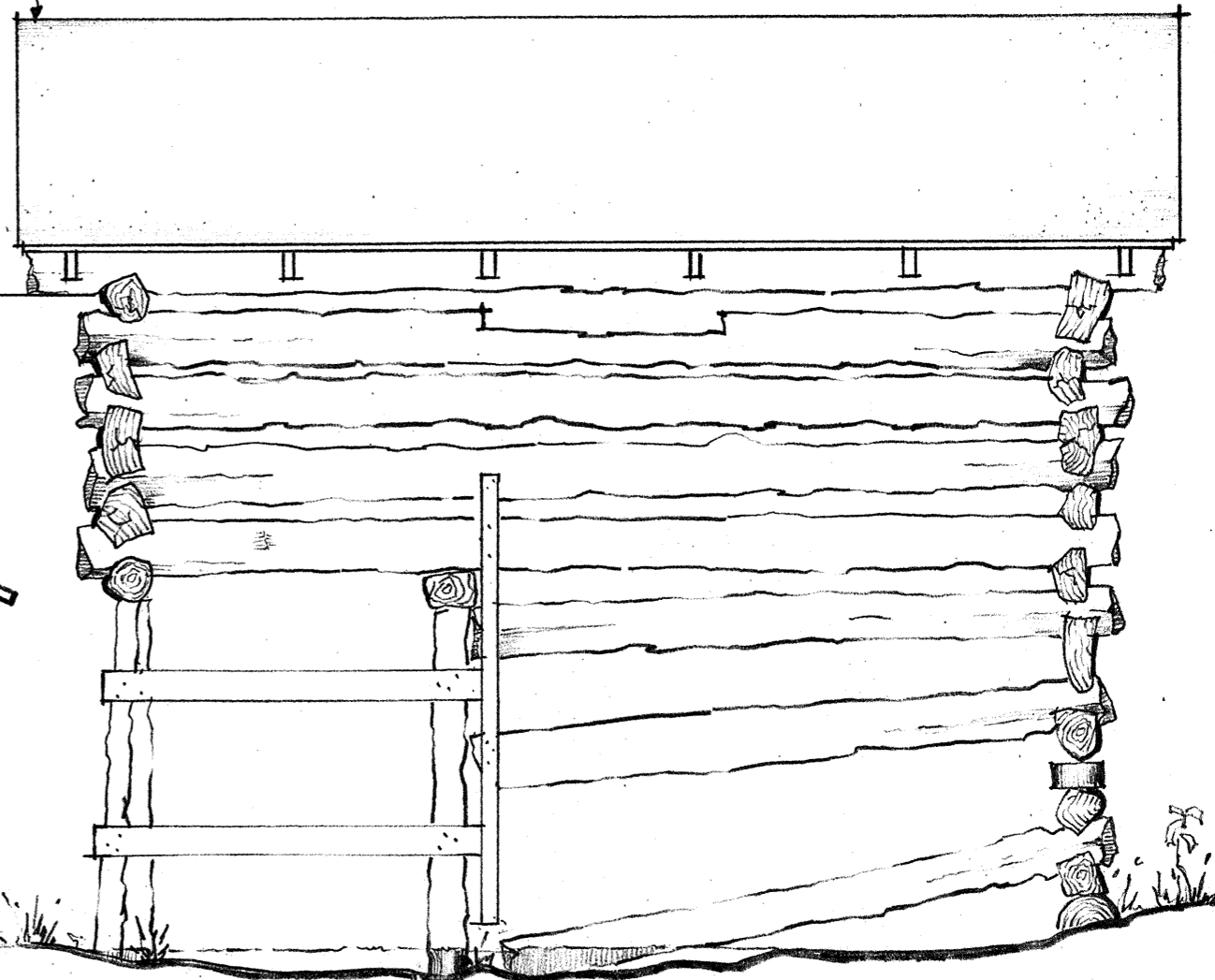
65# ASPHALT ROLLED ROOFING  
 PUT ON MILL BY N.P.S. IN 1948.  
 ALL LOGS CHESTNUT EXCEPT THOSE  
 NOTED WITH..... ©



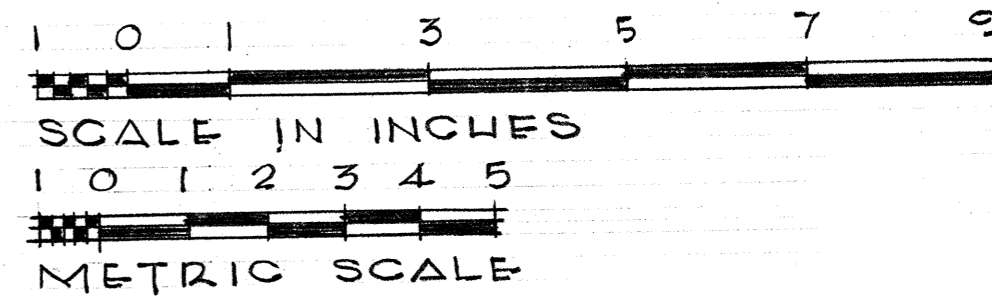
WEST ELEVATION



SECTION "B"  
SCALE: 1/2" = 1'-0"



EAST ELEVATION



SAMUEL E. HENRY - DEL. 1958

EASTERN OFFICE, DIVISION OF DESIGN & CONSTRUCTION  
 PHILADELPHIA  
 UNDER DIRECTION OF UNITED STATES DEPARTMENT OF THE INTERIOR  
 NATIONAL PARK SERVICE, BRANCH OF PLANS AND DESIGN

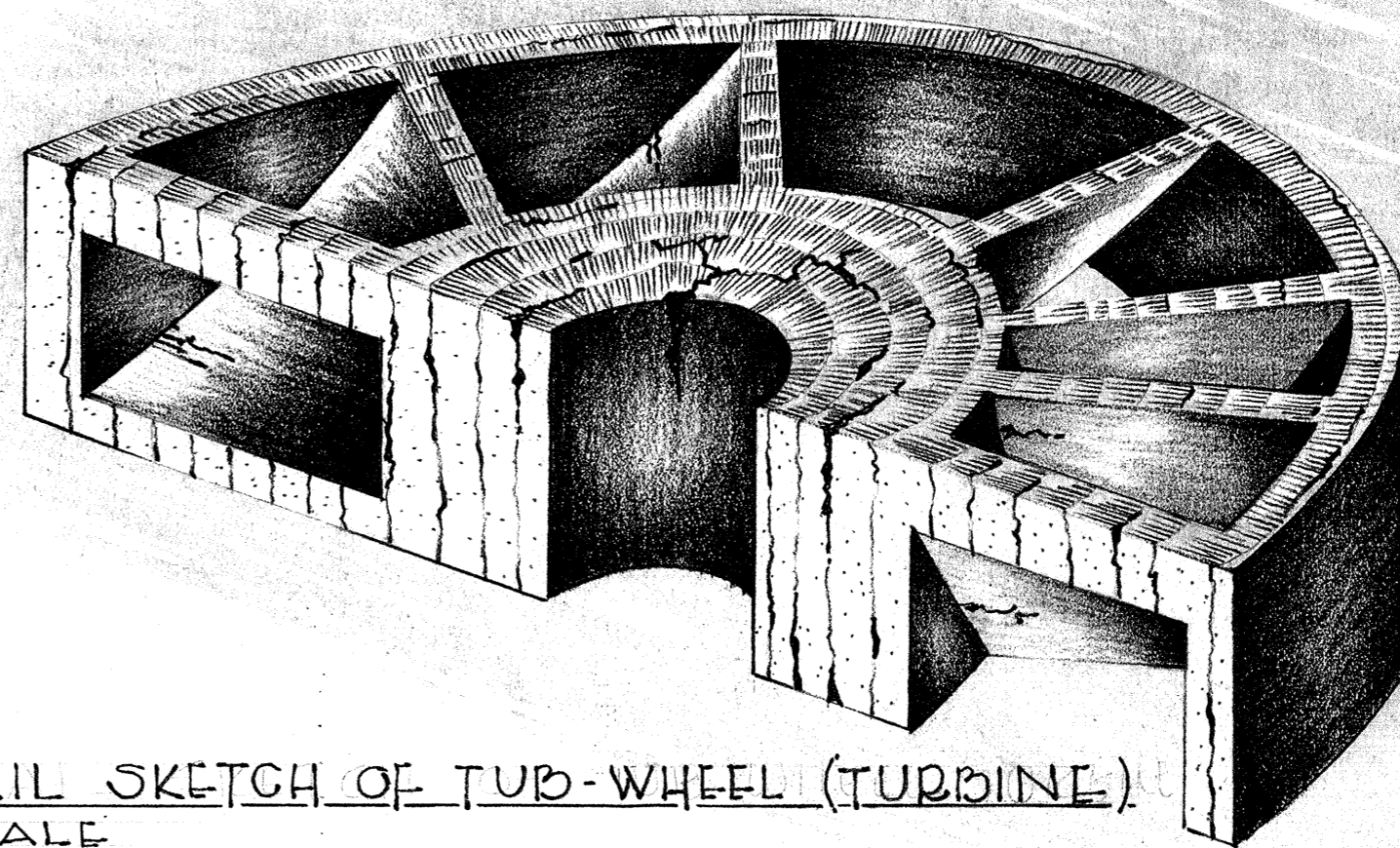
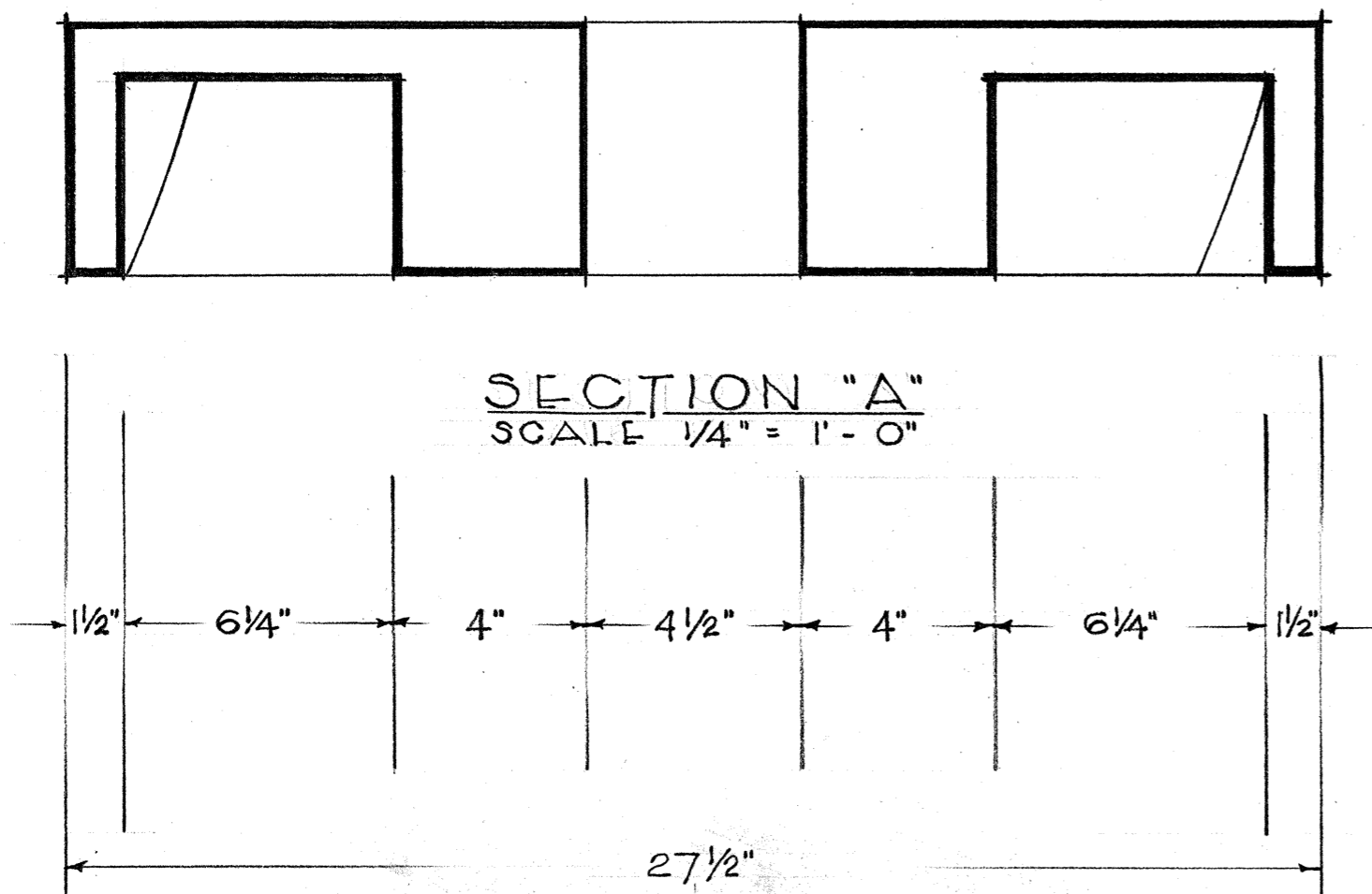
NAME OF STRUCTURE  
**JUNGLEBROOK TUB - MILL**  
 GATLINBURG VICINITY, GREAT SMOKY MOUNTAINS NATIONAL PARK, SEVIER COUNTY, TENNESSEE

SURVEY NO.  
 TENN  
 163

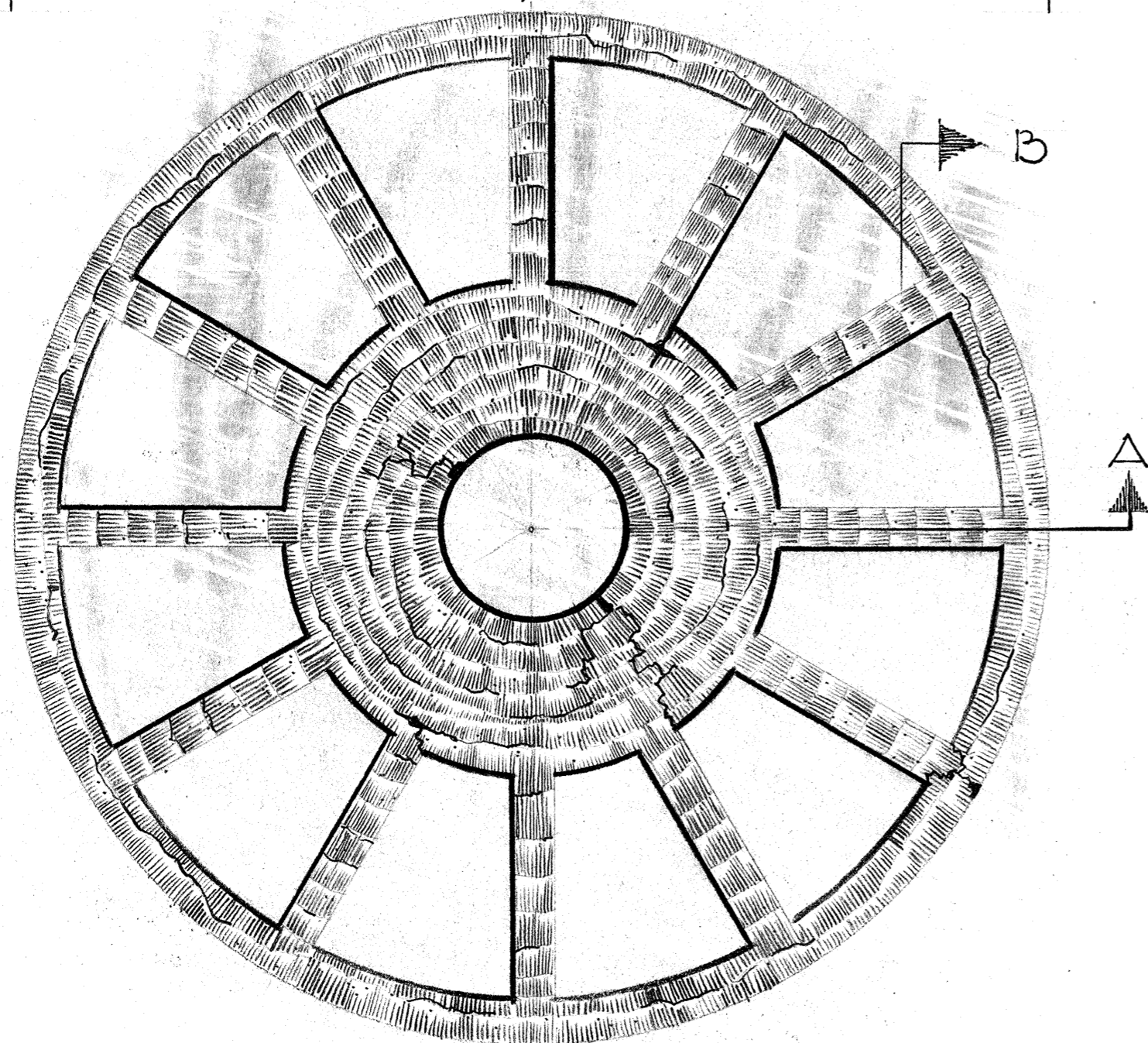
HISTORIC AMERICAN  
 BUILDINGS SURVEY  
 SHEET 3 OF 6 SHEETS

LIBRARY OF CONGRESS  
 INDEX NUMBER

# TUB-WHEEL (TURBINE) DETAILS

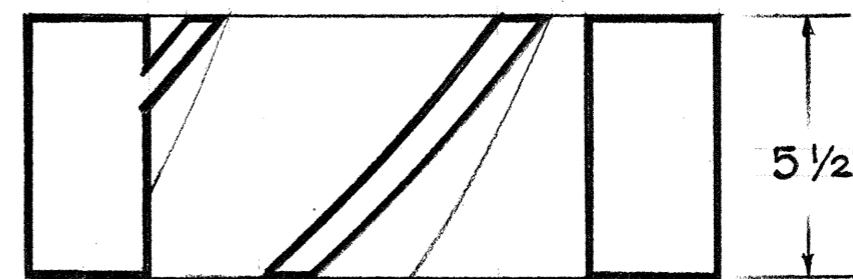


DETAIL SKETCH OF TUB-WHEEL (TURBINE)  
NO SCALE

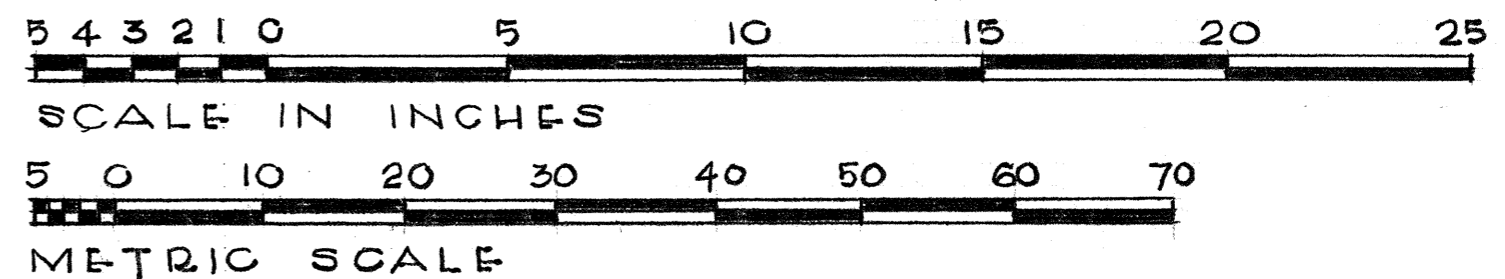


PLAN  
SCALE: 1/4" = 1'-0"

THE TUB WHEEL (TURBINE WHEEL) WAS REMOVED FROM THE SITE OF THE JUNGLEBROOK TUB-MILL IN 1948 WHEN REPAIRS WERE BEING MADE ON THE MILL, AND IS NOW CRATED AND STORED IN BUILDING NO. 202 IN CADES COVE, G. S. M. N. P. THIS PARTICULAR TURBINE OR TUB-WHEEL WAS HAND HEWN FROM A POPLAR LOG...



SECTION "B"  
SCALE: 1/4" = 1'-0"



SAMUEL E. HENRY - DEL. 1958

EASTERN OFFICE, DIVISION OF DESIGN & CONSTRUCTION  
PHILADELPHIA  
UNDER DIRECTION OF UNITED STATES DEPARTMENT OF THE INTERIOR  
NATIONAL PARK SERVICE, BRANCH OF PLANS AND DESIGN

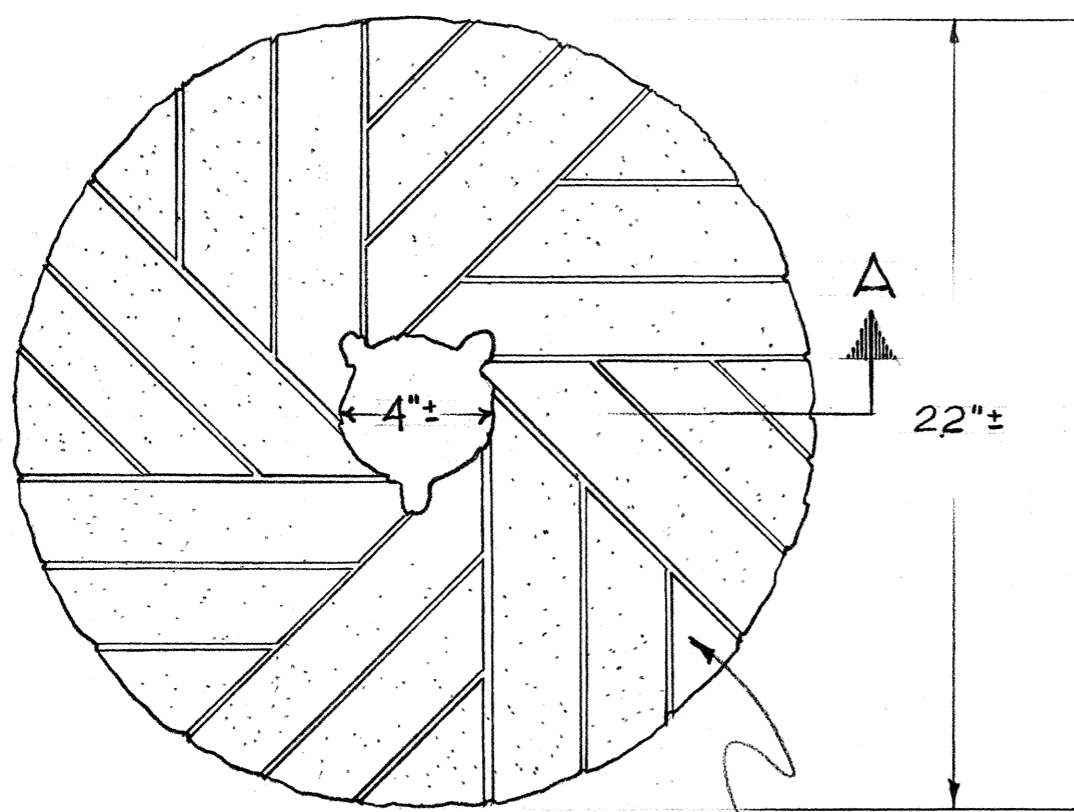
NAME OF STRUCTURE  
**JUNGLEBROOK TUB-MILL**  
GATLINBURG VICINITY • SMOKY MOUNTAINS NATIONAL PARK • SEVIER COUNTY • TENNESSEE

SURVEY NO.  
TENN  
163

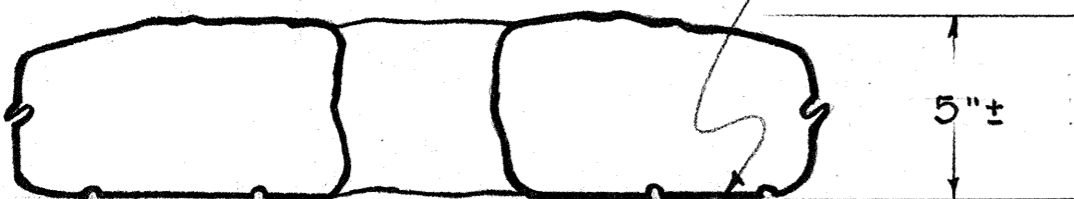
HISTORIC AMERICAN  
BUILDINGS SURVEY  
SHEET 4 OF 6 SHEETS

LIBRARY OF CONGRESS  
INDEX NUMBER

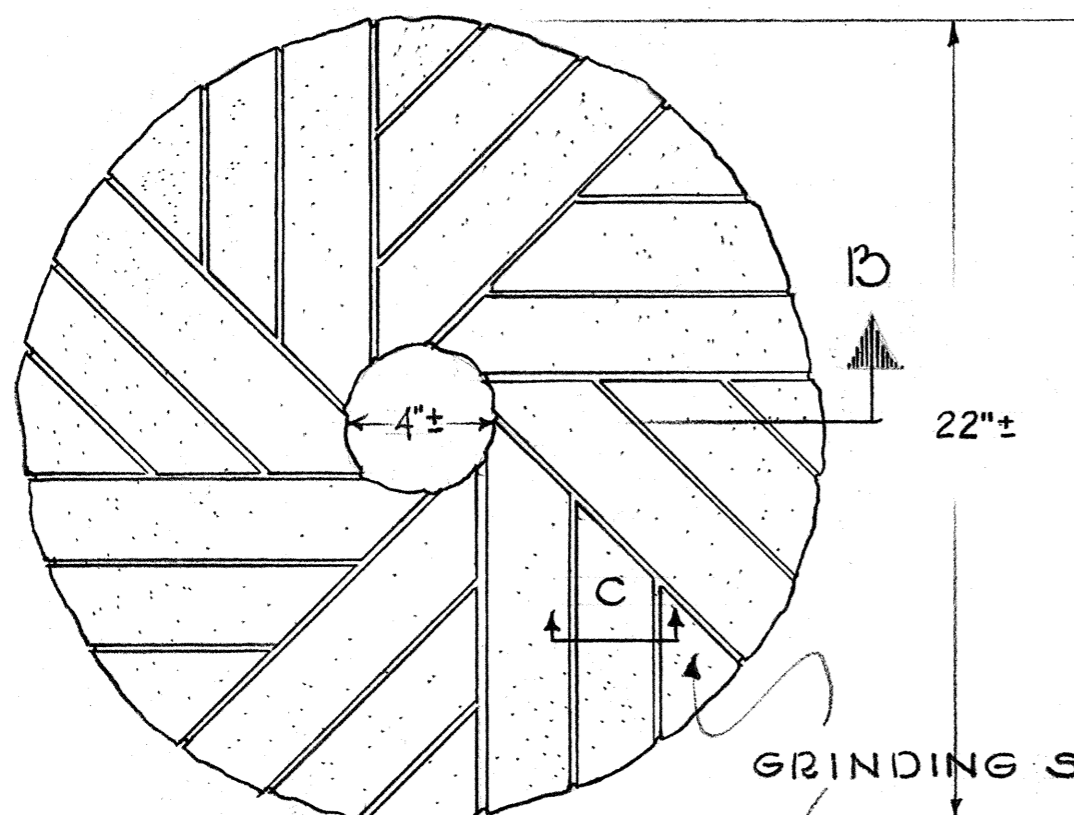
DETAILS



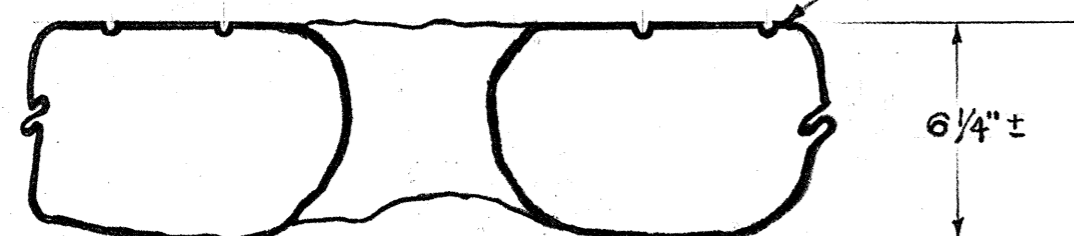
TURNING STONE GRINDING SURFACE  
SCALE: 3/16" = 0'-1"



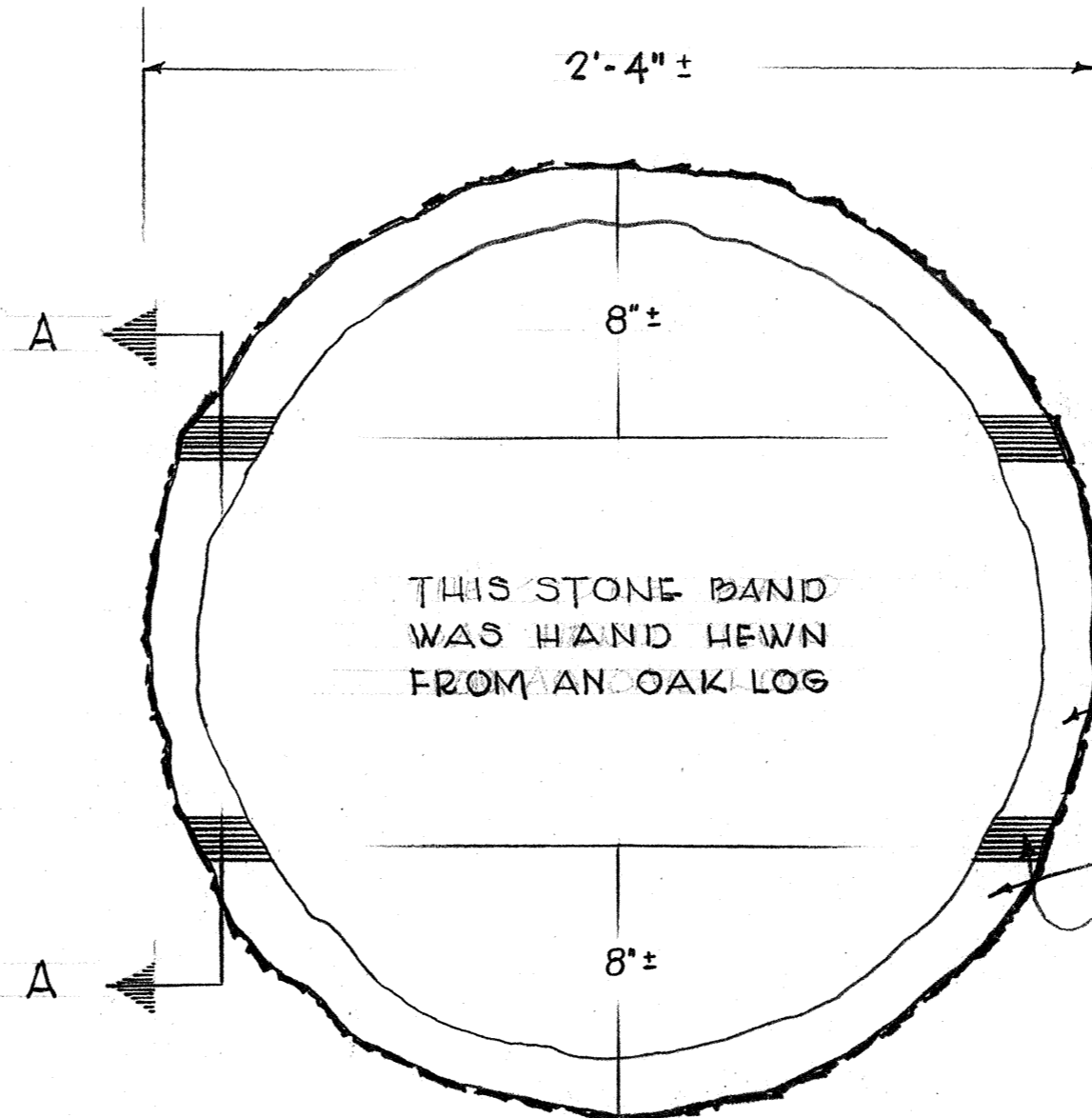
SECTION "A"  
SCALE: 3/16" = 0'-1"



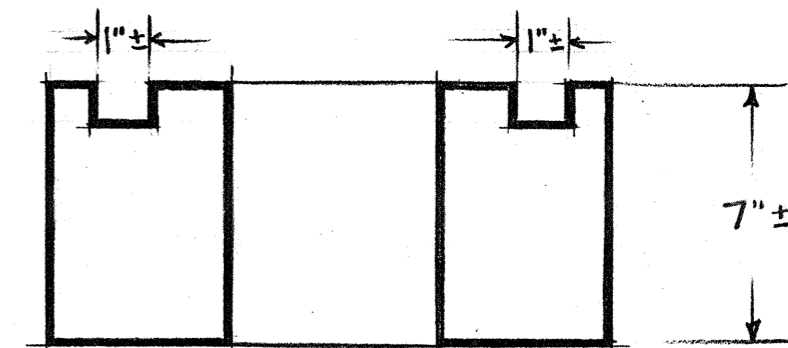
STATIONARY STONE  
SCALE: 3/16" = 0'-1"



SECTION "B"  
SCALE: 3/16" = 0'-1"



STONE BAND  
SCALE: 3/16" = 0'-1"



SECTION "AA"  
SCALE: 3/16" = 0'-1"

THICKNESS OF BAND VARIES FROM 1 1/4" TO 2 3/4"

THE BARK WAS NEVER REMOVED FROM BAND.

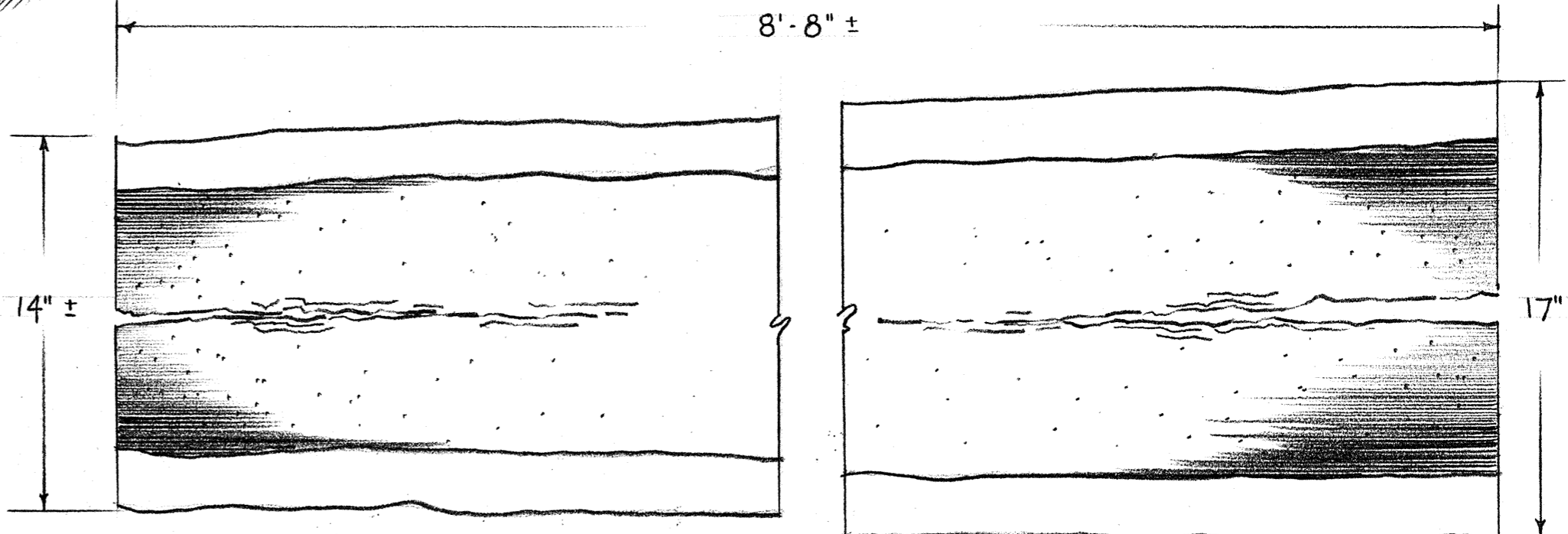
THE NOTCHES (SEE SECTION "AA") CUT IN THE BAND WERE WHERE THE CRADLE SAT IN POSITION. NOTE: CRADLE AND HOPPER WERE MISSING FROM MILL.

THE STONE BAND AND TWO SECTIONS OF THE FLUME ARE STORED IN BLDG. NO. 202, CADES COVE, G.S.M.N.P.

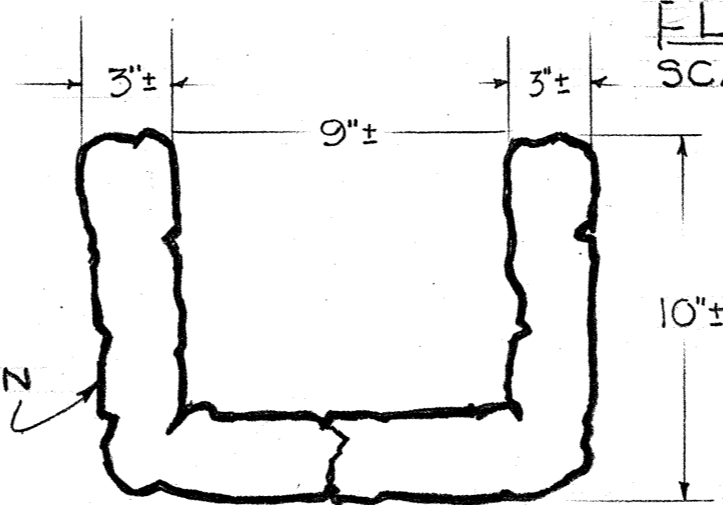


SECTION "C"  
FULL SCALE

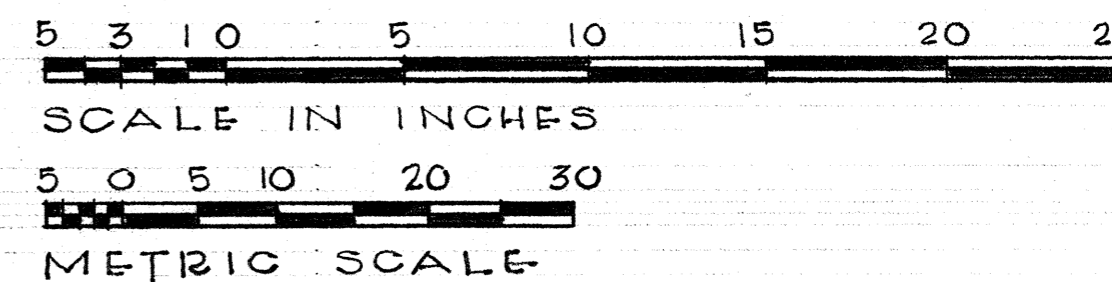
GRINDING SURFACES OF THE MILL STONES WERE HAND TOOLED.



FLUME LOG (ONE SECTION)  
SCALE: 3/16" = 0'-1"

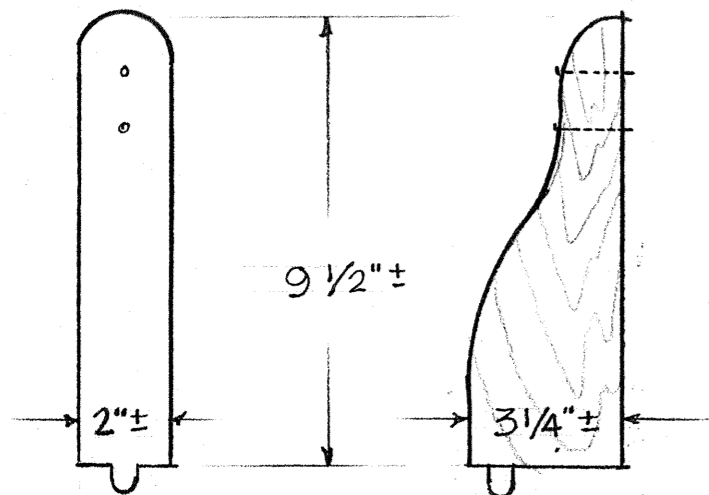


TYPICAL SECTION  
SCALE: 3/16" = 0'-1"

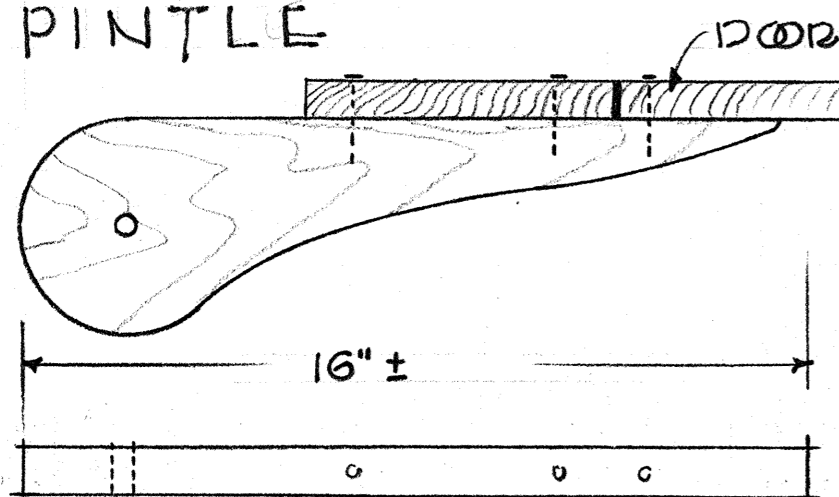


DETAILS

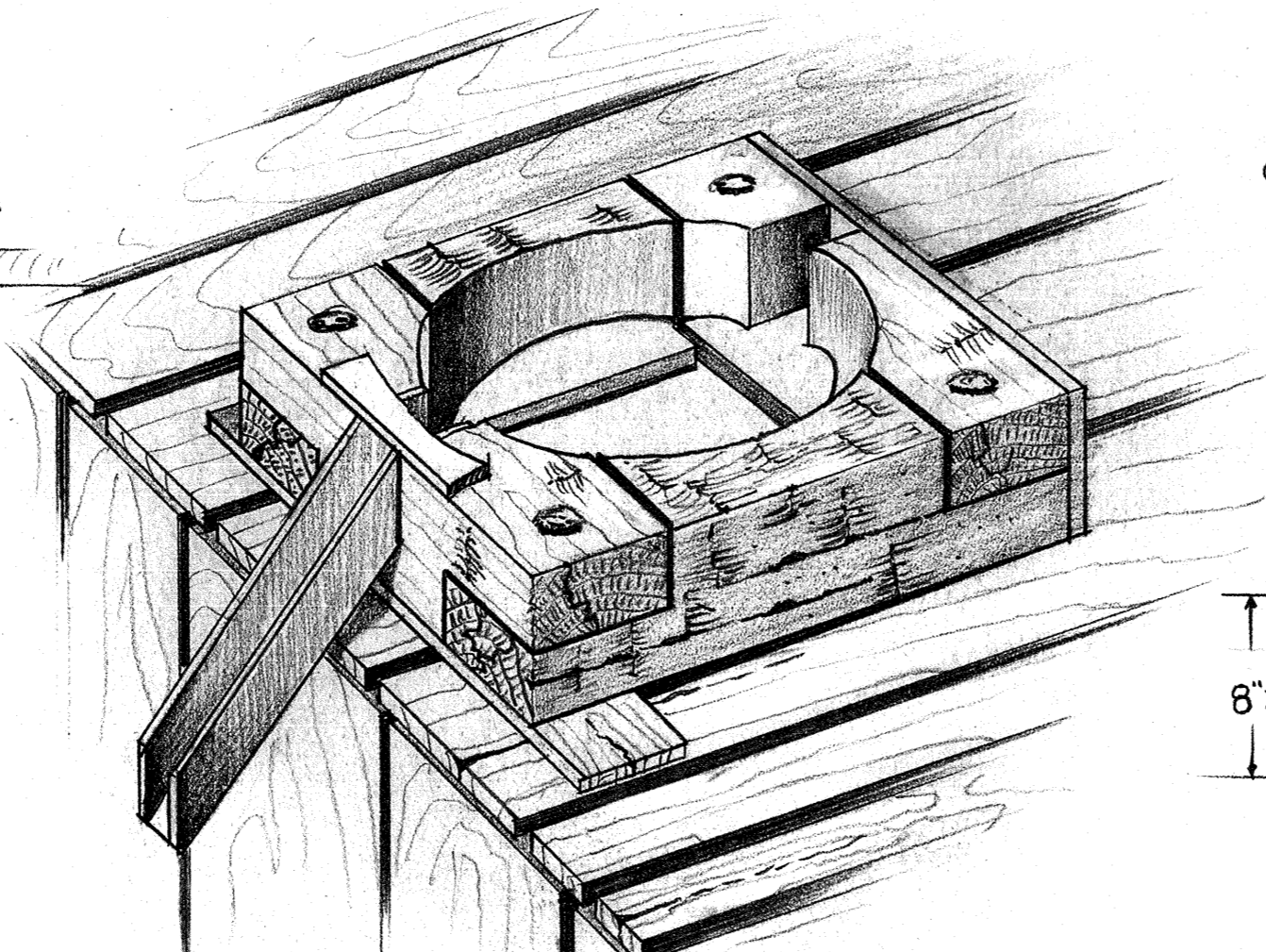
THE PINTLE WHICH IS ATTACHED TO THE INSIDE OF THE DOOR FACING IS ALL THAT REMAINS OF THE HINGE. THE PART WHICH WOULD BE ATTACHED TO THE DOOR IS MISSING, AND THE ONE ILLUSTRATED IN THESE DRAWINGS IS REPRODUCED FROM SIMILARLY CONSTRUCTED HINGES ON BUILDINGS AT THE PIONEER EXHIBIT IN CADES COVE, G. S. M. N. P.



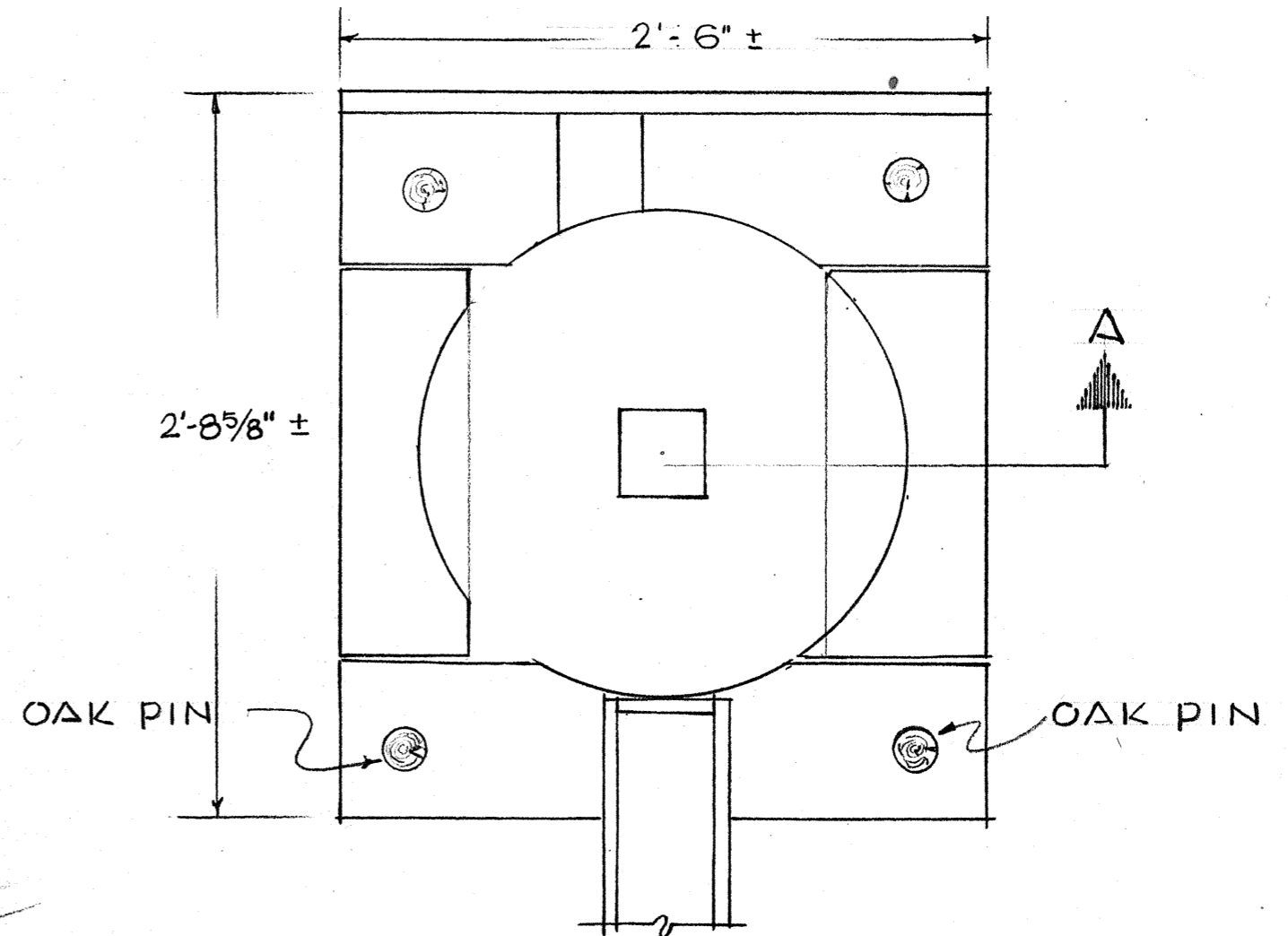
PINTLE



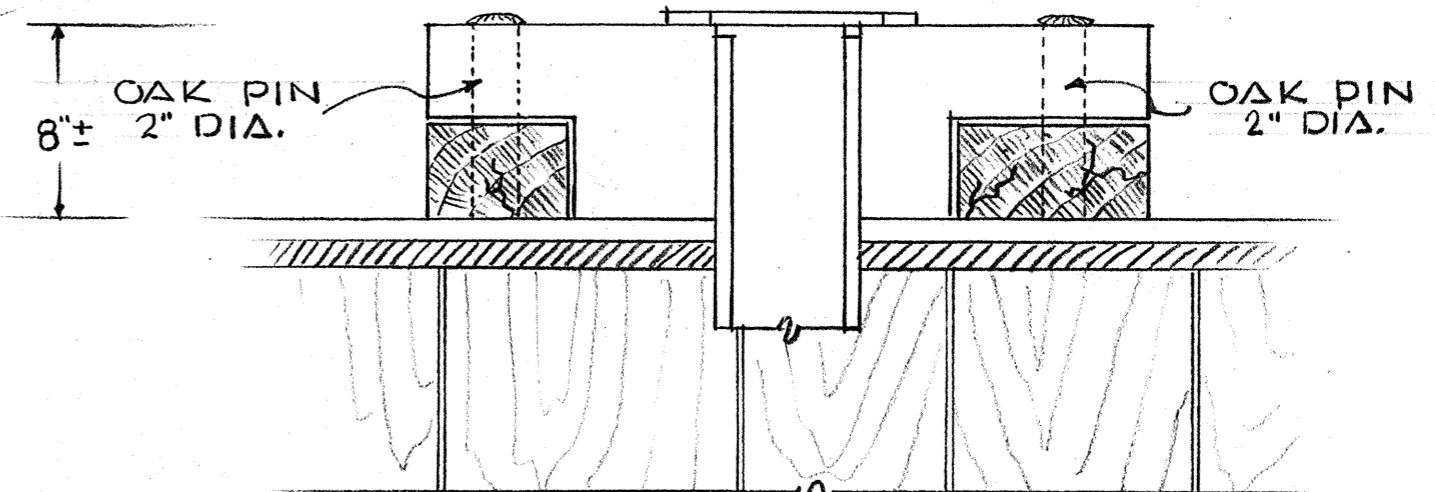
HINGE



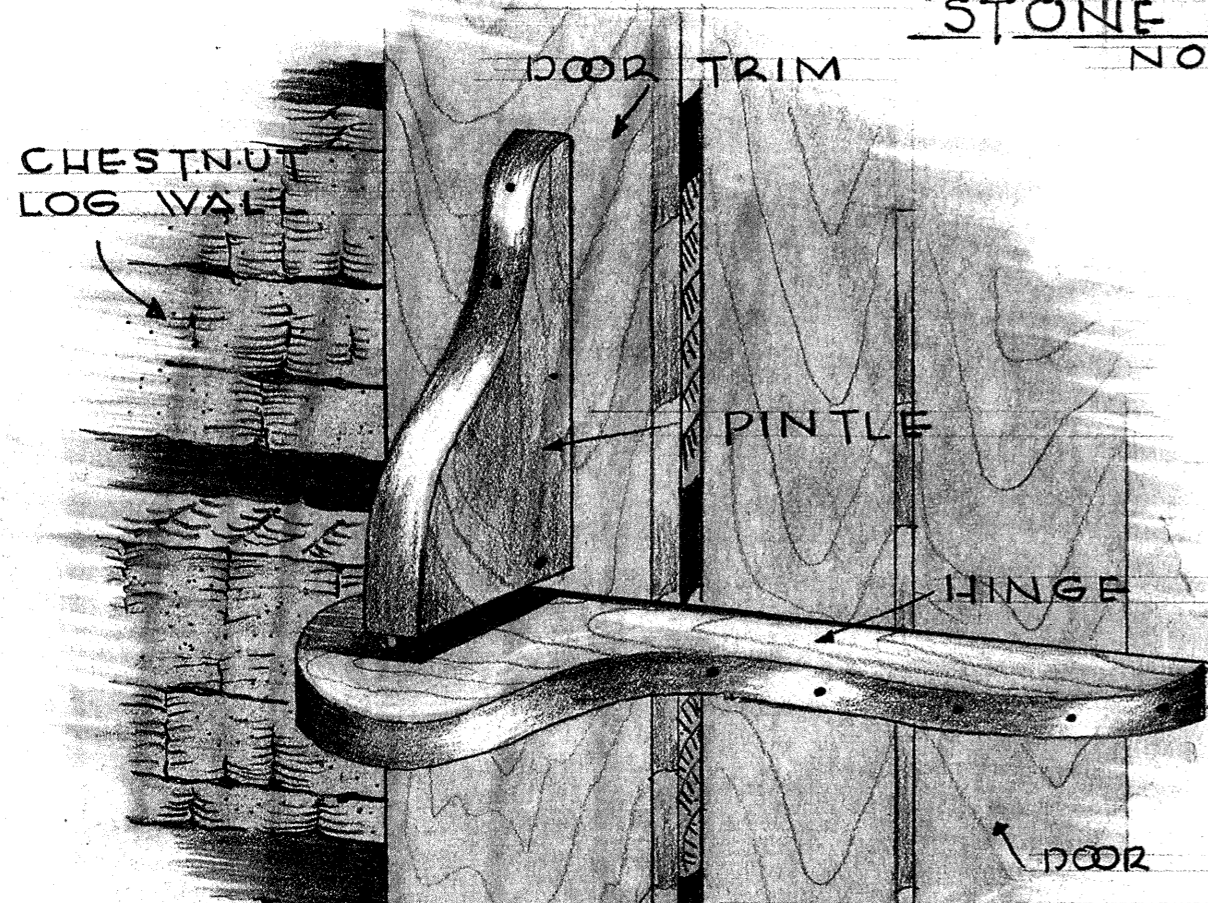
STONE SEAT ASSEMBLY  
NO SCALE



PLAN  
SCALE: 1 1/2" = 1'-0"

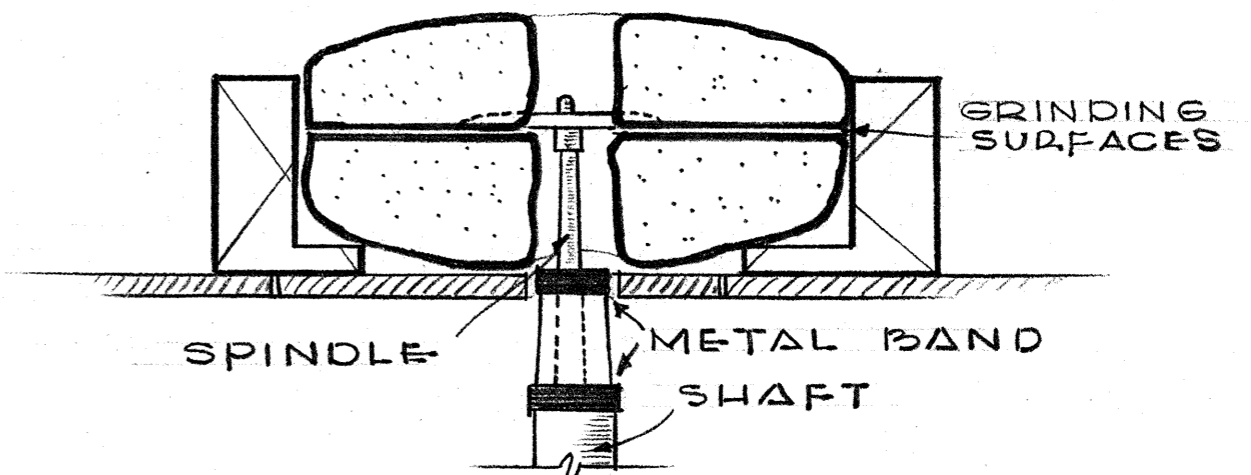


FRONT ELEVATION  
SCALE: 1 1/2" = 1'-0"

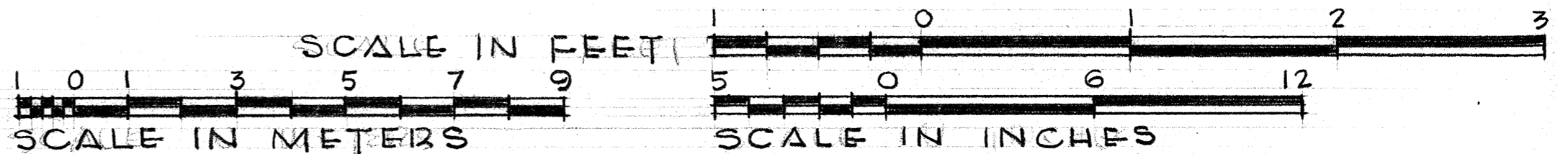


SKETCH OF A DOOR HINGE WHICH MIGHT HAVE BEEN USED.  
NO SCALE

THE STONE SEAT IS CONSTRUCTED OF FOUR (4) SHORT HAND HEWN SECTIONS OF OAK TIMBER APPROXIMATELY FOUR INCHES (4") BY EIGHT INCHES (8") & FROM THIRTY INCHES (30") TO THIRTY-THREE INCHES (33") IN LENGTH, HELD AT THE CORNERS BY THE SQUARE NOTCH JOINT WITH A TWO INCH (2") OAK PIN TO KEEP THEM IN PLACE.....



SECTION "A"  
SCALE: 1 1/2" = 1'-0"



SAMUEL E. HENRY - DEL. 1958

EASTERN OFFICE - DIVISION OF DESIGN & CONSTRUCTION  
PHILADELPHIA  
UNDER DIRECTION OF UNITED STATES DEPARTMENT OF THE INTERIOR  
NATIONAL PARK SERVICE, BRANCH OF PLANS AND DESIGN

NAME OF STRUCTURE  
**JUNGLE BROOK TUB MILL**  
GATLINBURG VICINITY • SMOKY MOUNTAINS NATIONAL PARK • SEVIER COUNTY • TENNESSEE

SURVEY NO.  
TENN  
163

HISTORIC AMERICAN  
BUILDINGS SURVEY  
SHEET 6 OF 6 SHEETS

LIBRARY OF CONGRESS  
INDEX NUMBER

STATE <b>✓ TENNESSEE</b>	COUNTY <b>Sevier</b>	TOWN OR VICINITY <b>GATLINBURG VICINITY</b> 65
INDEX NUMBER <b>TENN, 78. GAT. V, 2-</b>	MONUMENT <b>Junglebrook Tub Mill</b>	
REPRESENTED IN NEGATIVE FILE	H.A.B.S. SURVEY NO. <b>TENN-163</b>	Cherokee Orchard Rd., Great Smoky Mountains National Park. One story; log, with shingled, gable roof; log tub-wheel; grinding stones. 6 sheets (1958) including plans, elevations, sections, and details of tub wheel and grinding machinery.
PUBLISHED PHOTOGRAPHS		
PUBLISHED DRAWINGS		
PENCIL DR. CRONAR POS & NEG (NOT FILM) FN-13		
Form 10-444 (2/59)		HISTORIC AMERICAN BUILDINGS SURVEY 50739